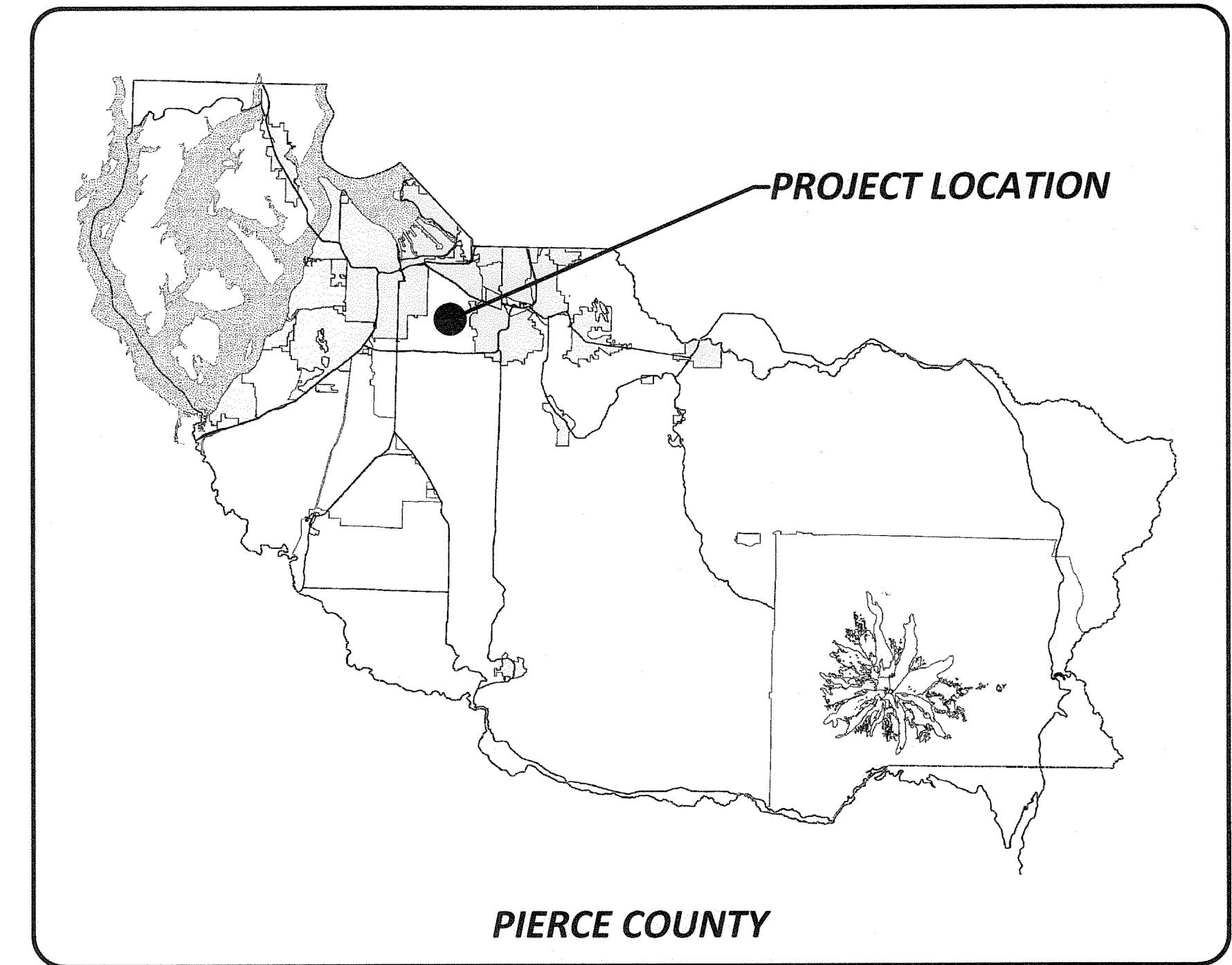


| | | | | |
|------------|-------|-------------------------|-----------|--------------|
| REGION NO. | STATE | FEDERAL AID PROJECT NO. | SHEET NO. | TOTAL SHEETS |
| 10 | WASH. | ---- | 1 | 2 |



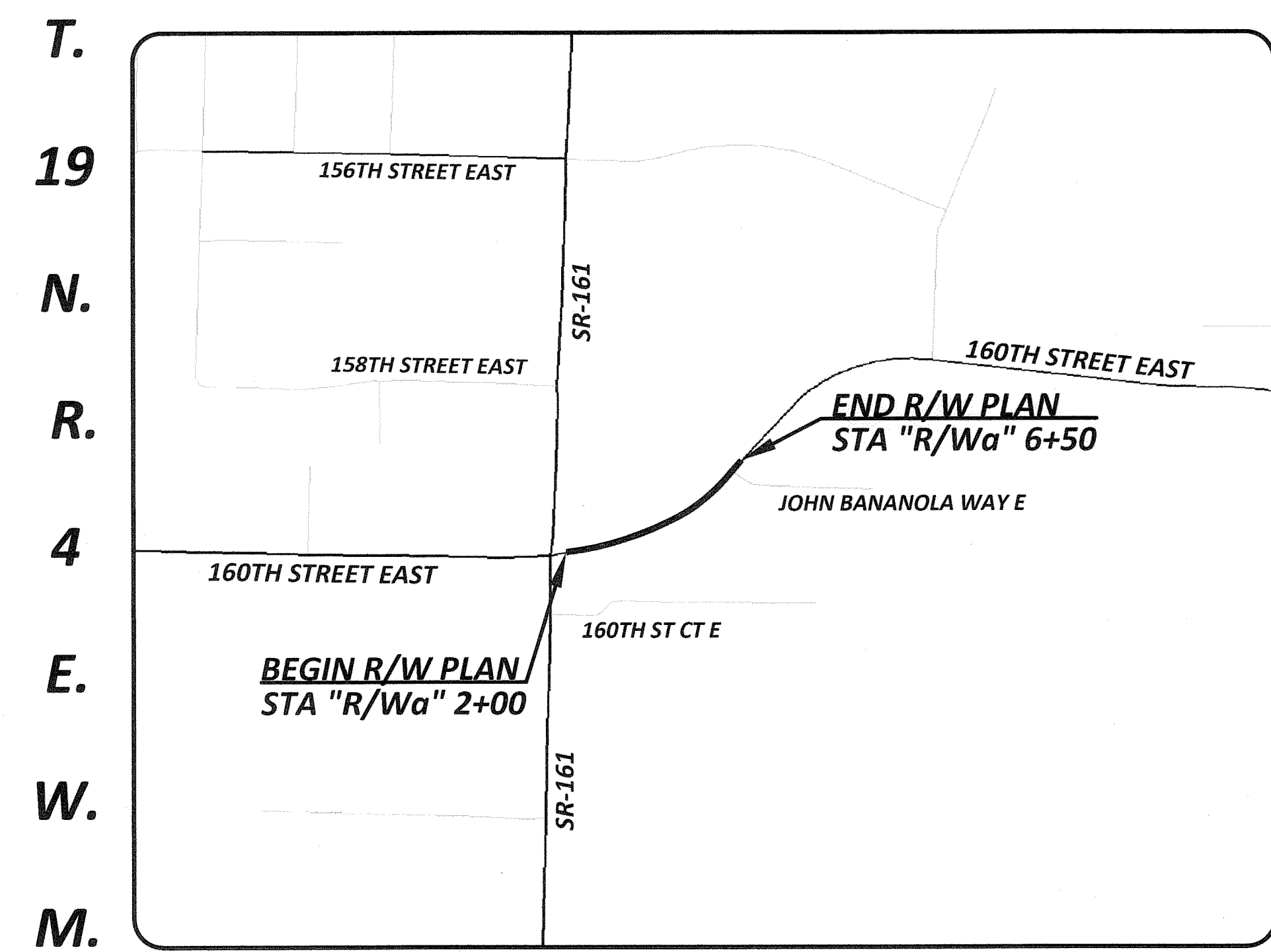
160TH STREET EAST
330' E/O SR-161 TO JOHN BANANOLA WAY EAST
CRP 5767
TIB NO.P-P-027(P06)-1
RIGHT-OF-WAY PLANS



LOCATION MAP

| | |
|-------------------------|---|
| COVER SHEET | 1 |
| RIGHT-OF-WAY PLAN | 2 |

INDEX



VICINITY MAP

Drawing: P:\1767-160STESTEWALKLINKAGES\DESIGN\DRAWINGS\RIGHTOFWAY\PLANSHEETS\1767_ROWCOVERSHEET.DWG Layout Tab: COVERSHEET
 Xrefs:
 Date: 07/08/2016 Time: 10:20:50 AM Plotted by: CLAKOSE

| | |
|--|--|
| DRAWN BY: G. NOVLAN | BOOK NO.: RPF 5028 |
| DESIGNED BY: L. SANFORD | SURVEYED BY: S. COOK |
| CHECKED BY: D. CAVANAGH, P.E. | DATE SURVEYED: DECEMBER 2015 |
| REVIEWED BY: P. BAUGHMAN, P.E. | DATE PLOTTED: July 8, 2016 |

| NO. | DATE | REVISION | BY | APPROVED |
|-----|------|----------|----|----------|
| | | | | |
| | | | | |
| | | | | |
| | | | | |
| | | | | |
| | | | | |
| | | | | |
| | | | | |
| | | | | |
| | | | | |

Pierce County
 Public Works
 Office of the County Engineer
 Tacoma Mall Office Building
 4301 South Pine Street, Suite 628
 Tacoma, Washington 98409
 An APWA Accredited Agency

Office of the County Engineer
 APPROVED BY:

 BRIAN D. STACY, P.E. DATE 7-13-16
 LETICIA M. NEAL, P.E.
 TRANSPORTATION IMPROVEMENT SECTION MANAGER

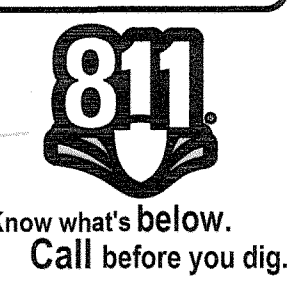
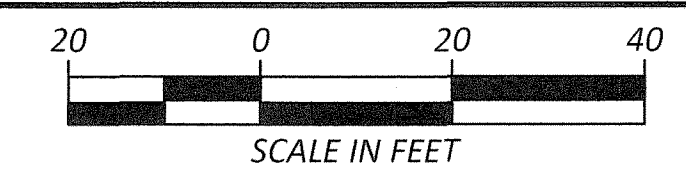
160TH STREET EAST
330' E/O SR-161 TO JOHN BANANOLA WAY EAST

COVER SHEET

CRP 5767

T.19 N., R. 4 E., W. M.

SW 1/4 SW 1/4
SEC. 22



LEGEND (EXISTING)

- MONUMENT
- WATER METER
- WATER VAULT
- SPRINKLER HEAD
- FIRE HYDRANT
- GATE/VALVE
- IRRIGATION DISTRIBUTION BOX
- ELECTRICAL BOX
- POWER VAULT
- POWER TRANSFORMER
- LUMINARIE
- TELEPHONE VAULT
- TRAFFIC SIGN
- GENERAL SIGN
- DOUBLE POST GENERAL SIGN
- MAIL BOX(S)
- TREE (CONIFER)
- TREE (DECIDUOUS)
- SHRUB
- FLAG
- STORM DRAIN CATCH BASIN
- STORM DRAIN CATCH BASIN TYPE 2
- SANITARY SEWER MANHOLE
- GAS VALVE
- GATE
- FENCE
- CENTERLINE
- HEDGE
- DITCH
- RIGHT-OF-WAY
- FLOW LINE
- EASEMENT LINE
- PROPERTY LINE
- EDGE OF ASPHALT
- BUILDING LINE
- EDGE OF GRAVEL OR SHOULDER
- STORM DRAINAGE PIPE
- EXISTING EASEMENT AS NOTED
- PARCEL #**
TAX PARCEL #
LAST NAME
FIRST NAME
SITE ADDRESS
- PARCEL OWNER INFORMATION

LEGEND (PROPOSED)

- RIGHT-OF-WAY LINE
- RIGHT-OF-WAY ACQUISITION
- DRIVEWAY RECONSTRUCTION PERMIT
- CONSTRUCTION PERMIT

DATUM:
HORIZONTAL: PIERCE COUNTY RTN CORS: NAD 83 (2011)2010 & WSPC SOUTH ZONE.
VERTICAL: NAVD 88 (NAD83 2011) GEOID 12A

PROJECT BASIS OF BEARING OF N 64° 50' 53" E WAS HELD BETWEEN A 3" I.P. WITH CONC & PIN IN A WSDOT CASE AT THE INTERSECTION OF SR-161 & 160TH ST E; AND A 3" BRASS MONUMENT AT THE INTERSECTION OF 160TH ST E & JOHN BANANOLA WAY E.

PROJECT T.B.M.: ETCHED "SQUARE" IN BASE OF LUMINARIE POLE ON THE N.W. SIDE OF 160th St E APPROX 90' N & 65' E OF THE ENTRANCE TO TARGET LOADING DOCK AND 70' N 40° E FROM A FIRE HYDRANT.
ELEV.: 525.25' (NAVD 88)

PROJECT COORDINATE FRAMEWORK:
COMBINED SCALE FACTOR: 0.99993527948, AND AN ADDITIVE TRANSLATION OF +328,083.333USF (100,000M) TO THE X AND Y WAS APPLIED TO W.S.P.C. GRID VALUES. ALL PROJECT DISTANCES ARE SHOWN AS GROUND.

9161A
0419223064
MERIDIAN SOUTH CENTER LLC
15941 MERIDIAN EAST

9161B
0419223063
MERIDIAN SOUTH CENTER LLC
15941 MERIDIAN EAST

| CURVE | PI STATION | RADIUS | LENGTH | TANGENT | DELTA |
|-------|------------|---------|---------|---------|-------------|
| 1 | 3+76.32 | 720.00' | 439.33' | 226.74' | 34° 57' 38" |

| PARCEL NO. | NAME | TOTAL AREA | R/W ACQUISITION | REMAINDER | CONSTRUCTION PERMIT |
|------------|---------------|------------|-----------------|------------|---------------------|
| 9162 | PIERCE COUNTY | 142,005 SF | | 142,005 SF | 67 SF |
| 9166 | PIERCE COUNTY | 22,844 SF | 348 SF | 22,496 SF | |

NOTE:
PROPERTY LINES OF THE ADJACENT PARCELS SHOWN ON THESE PLANS ARE LOCATED BY INTERPRETATION OF DEEDS AND OTHER INFORMATION FOUND IN THE PUBLIC RECORD AND SHOULD NOT BE CONSTRUED AS AN ACTUAL SURVEY.

Drawing: P:\1767-160STESTDEWALKLINKAGES\DESIGN\DRAWINGS\RIGHTOFWAY\PLANS\1767_ROWPLANS.DWG Layout Tab: PPO2
Xrefs: 1767 DESIGN INDEX.DWG / 1767 DESIGN TOPO INDEX.DWG / 1767 SURVINK.DWG
Date: 07/13/2016 Time: 09:04:36 AM Plotted by: CLAKOBE

| | |
|-----------------------------------|---------------------------------|
| DRAWN BY: G. NOVLAN | BOOK NO.: RPF 5028 |
| DESIGNED BY: L. SANFORD | SURVEYED BY: S. COOK |
| CHECKED BY: D. CAVANAGH, P.E. | DATE SURVEYED: DECEMBER 2015 |
| REVIEWED BY: P. BAUGHMAN, P.E. | DATE PLOTTED: July 8, 2016 |

| NO. | DATE | REVISION | BY | APPROVED |
|-----|------|----------|----|----------|
| | | | | |
| | | | | |
| | | | | |

Pierce County
Public Works
Office of the County Engineer
Tacoma Mall Office Building
4301 South Pine Street, Suite 628
Tacoma, Washington 98409
An APWA Accredited Agency

Office of the County Engineer
APPROVED BY:

BRIAN D. STACY, P.E. DATE: 7-13-16
LETICIA M. NEAL, P.E.
TRANSPORTATION IMPROVEMENT SECTION MANAGER

160TH STREET EAST
330' E/O SR-161 TO JOHN BANANOLA WAY EAST
RIGHT OF WAY PLAN
CRP 5767