

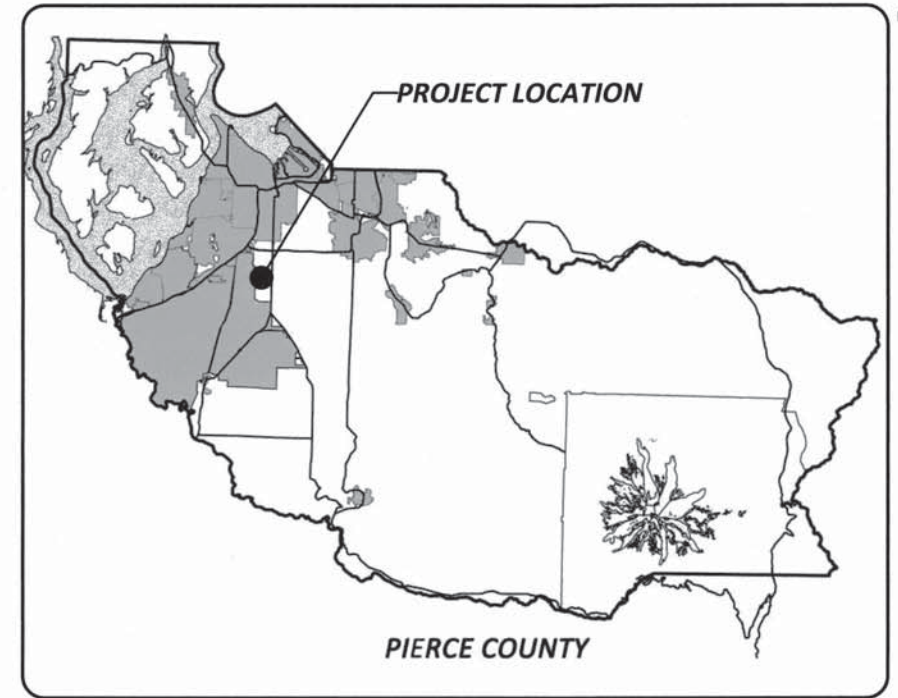


BRESEMANN BLVD S / MILITARY RD S INTERSECTION CRP 5834

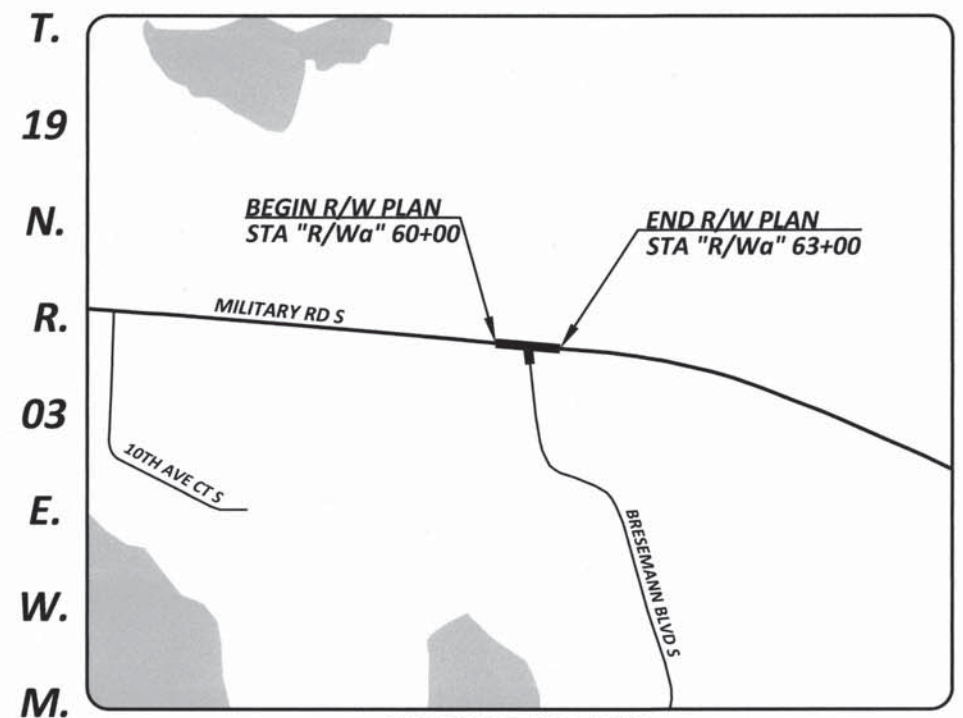
FEDERAL AID NO. HSIP-2890(005)
RIGHT-OF-WAY PLANS

COVER SHEET	1
RIGHT-OF-WAY PLAN	2

INDEX



LOCATION MAP



VICINITY MAP

Drawing: P:\5834-BRESEMANN\B\MILITARYRDS\DESIGN\DRAWINGS\RIGHTOFWAY\PLANSHEETS\5834RWCOVER.DWG Layout Tab: COVER_SHEET01
Xrefs: Date: 01/11/2017 Time: 10:00:49 AM Plotted by: RMC/MICH

DRAWN BY: R. MCMICHAEL	BOOK NO.: ---
DESIGNED BY: F. MARTIN, P.L.S.	SURVEYED BY: G.O. / S.M.
CHECKED BY: L. ROSS, P.E.	DATE SURVEYED: JULY 2016
REVIEWED BY: G. HESS, P.E.	DATE PLOTTED: January 11, 2017

NO.	DATE	REVISION	BY	APPROVED

Pierce County
Public Works
Office of the County Engineer
Tacoma Mall Office Building
4301 South Pine Street, Suite 628
Tacoma, Washington 98409
An APWA Accredited Agency

Office of the County Engineer

APPROVED BY:

BRIAN D. STACY, P.E. DATE 1-24-17

LETICIA M. NEAL, P.E.
TRANSPORTATION IMPROVEMENT MANAGER

1/24/2017

**BRESEMANN BLVD S / MILITARY RD S
INTERSECTION**

COVER SHEET

CRP 5834

T. 19 N., R. 3 E., W. M.

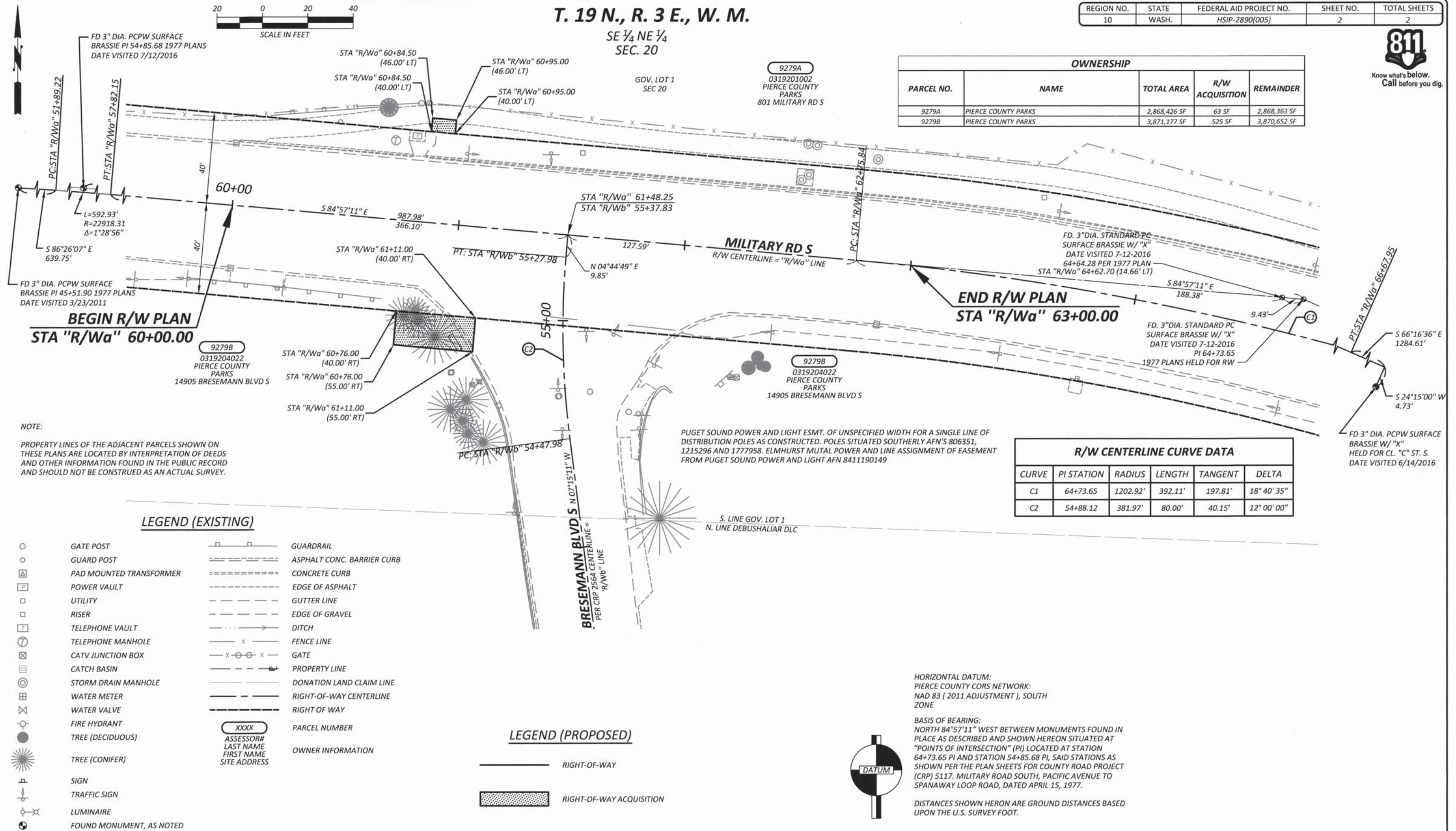
SE 1/4 NE 1/4
SEC. 20

REGION NO.	STATE	FEDERAL AID PROJECT NO.	SHEET NO.	TOTAL SHEETS
10	WASH.	HSIP-2890(005)	2	2



Know what's below.
Call before you dig.

OWNERSHIP				
PARCEL NO.	NAME	TOTAL AREA	R/W ACQUISITION	REMAINDER
9279A	PIERCE COUNTY PARKS	2,868,426 SF	63 SF	2,868,363 SF
9279B	PIERCE COUNTY PARKS	3,871,177 SF	525 SF	3,870,652 SF



DRAWN BY: R. MCMICHAEL	BOOK NO.:
DESIGNED BY: F. MARTIN, P.L.S.	SURVEYED BY: G.O. / S.M.
CHECKED BY: L. ROSS, P.E.	DATE SURVEYED: JULY 2016
REVIEWED BY: G. HESS, P.E.	DATE PLOTTED: January 11, 2017

NO.	DATE	REVISION	BY	APPROVED

Pierce County
Public Works
Office of the County Engineer
Tacoma Mall Office Building
4301 South Pine Street, Suite 628
Tacoma, Washington 98409
An APWA Accredited Agency

Office of the County Engineer
APPROVED BY:
Brian D. Stacy 1-24-17
BRIAN D. STACY, P.E. DATE
LETTICIA M. NEAL, P.E.
TRANSPORTATION IMPROVEMENT MANAGER

BRESEMANN BLVD S / MILITARY RD S INTERSECTION
RIGHT-OF-WAY PLAN
CRP 5834

Drawing: P:\5834-BRESEMANNBLVD S\MILITARY RD S\DRAWINGS\RIGHT OF WAY\PLANS\PLANS\5834-RIGHT OF WAY\PLAN01.DWG Layout Tab: RWPLAN01
 Xrefs: 5834-DESIGN\INDEX.DWG / SURVINDEX-5834-BRESEMANNBLVD S\MILITARY RD S\5834-PROPOSED\RIGHT OF WAY\INDEX.DWG
 Date: 01/11/2017 Time: 10:02:05 AM Plotted by: RCMCMICH