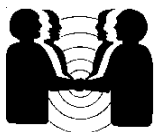
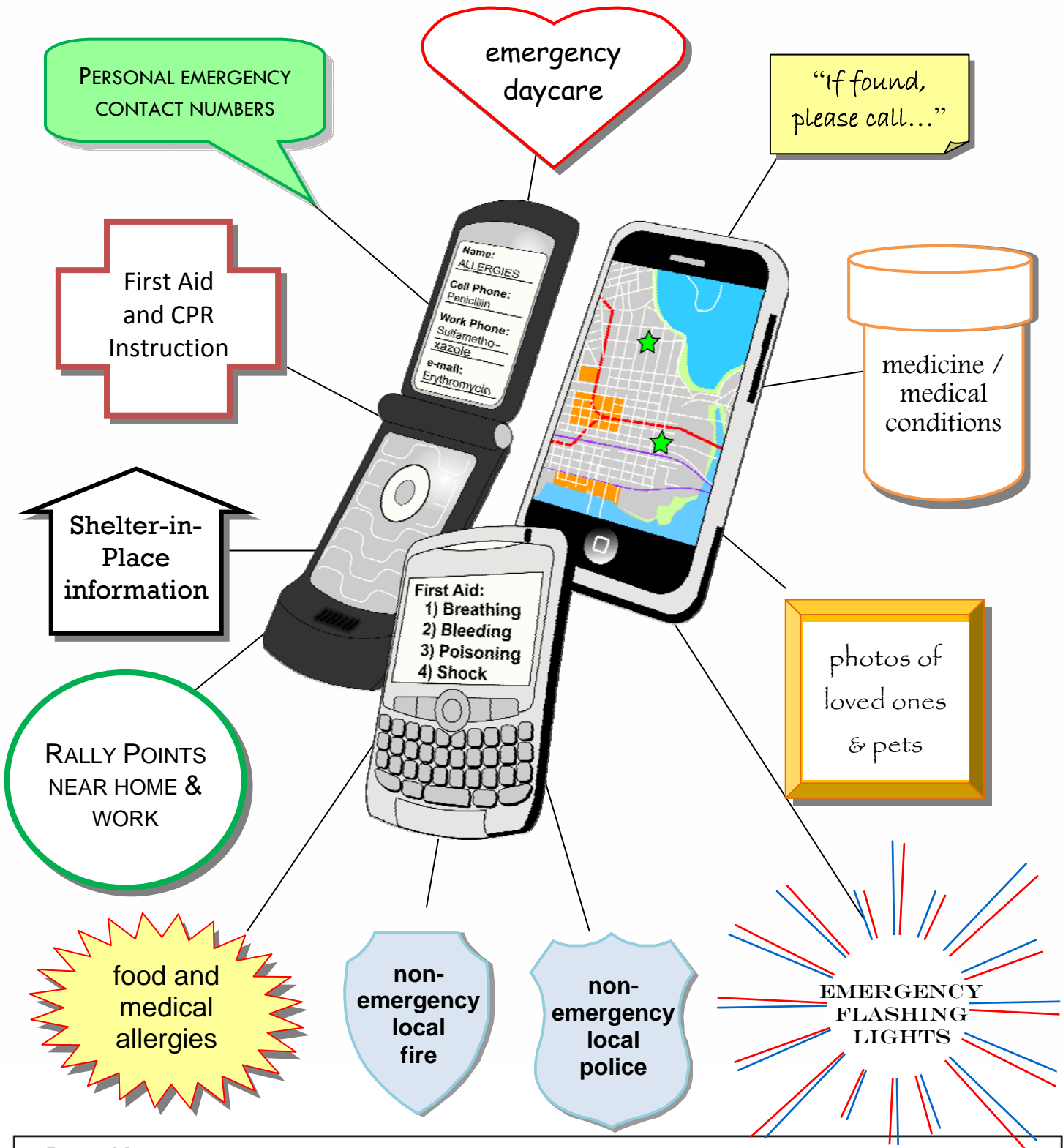


PLEASE READ THIS IMPORTANT INFORMATION!

PROGRAM YOUR PHONE TO BE YOUR GREATEST SAFETY TOOL!
Program "ICE" – your "In Case of Emergency" contact – into your cell phone.



CARD – Collaborating Agencies Responding to Disasters
(510) 451-3140 || www.CARDCanHelp.org
helping nonprofits prepare to prosper!

PLEASE READ THIS IMPORTANT INFORMATION!

TURNING OFF YOUR GAS: HOW. WHEN. WHY.

Find your gas shutoff valve, and learn how it works.
Keep an appropriate wrench at the shutoff valve for emergencies.
After an earthquake or accident, shut off your gas IF you:

HEAR IT



hissing
leak

OR

SEE IT



spinning dials

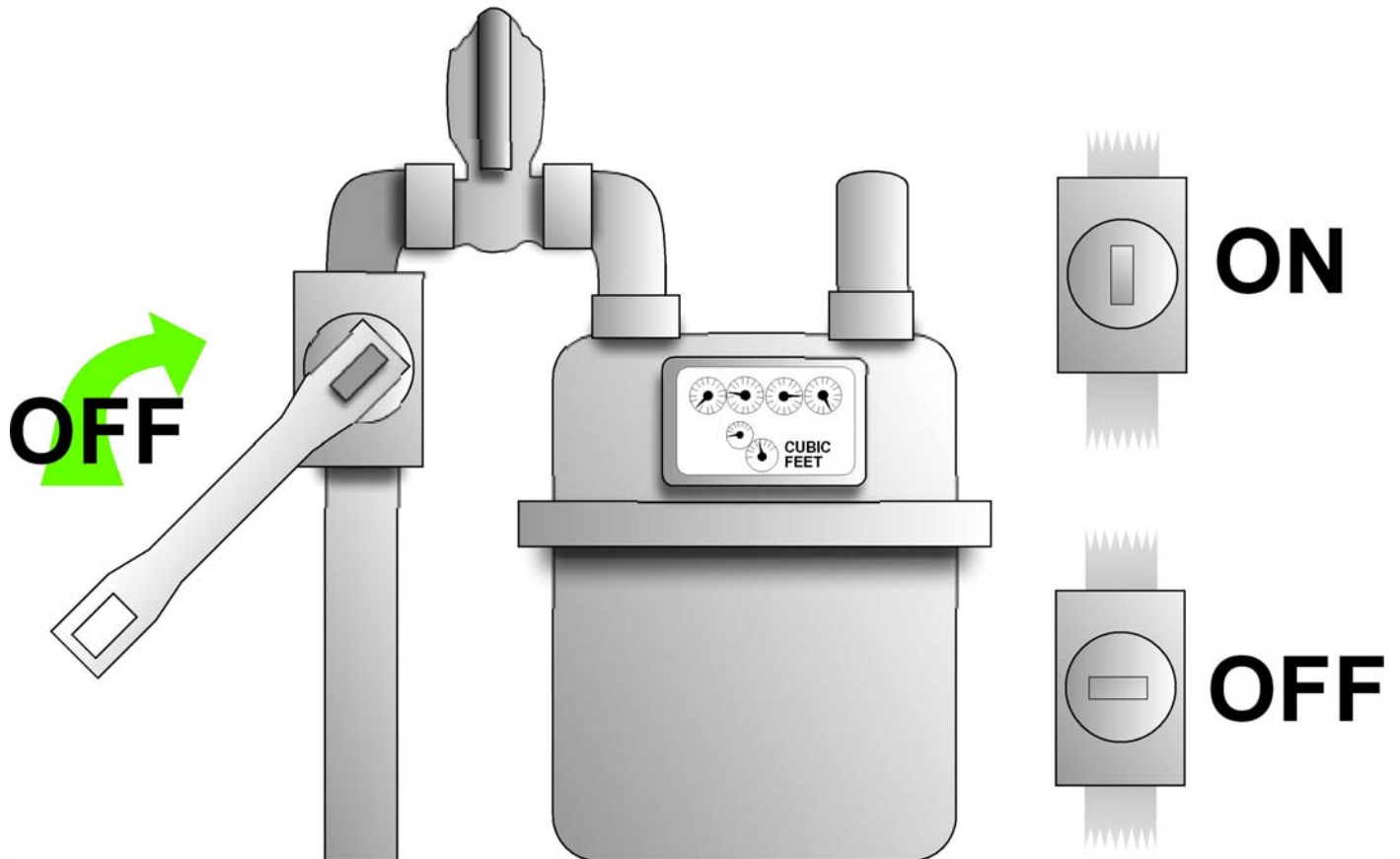
OR

SMELL IT



odor
of gas

REMEMBER: DO NOT TURN YOUR GAS BACK ON!
Only your gas company can do so safely.



CARD – Collaborating Agencies Responding to Disasters
(510) 451-3140 || www.CARDCanHelp.org
CARD is a 501(c)3 nonprofit organization