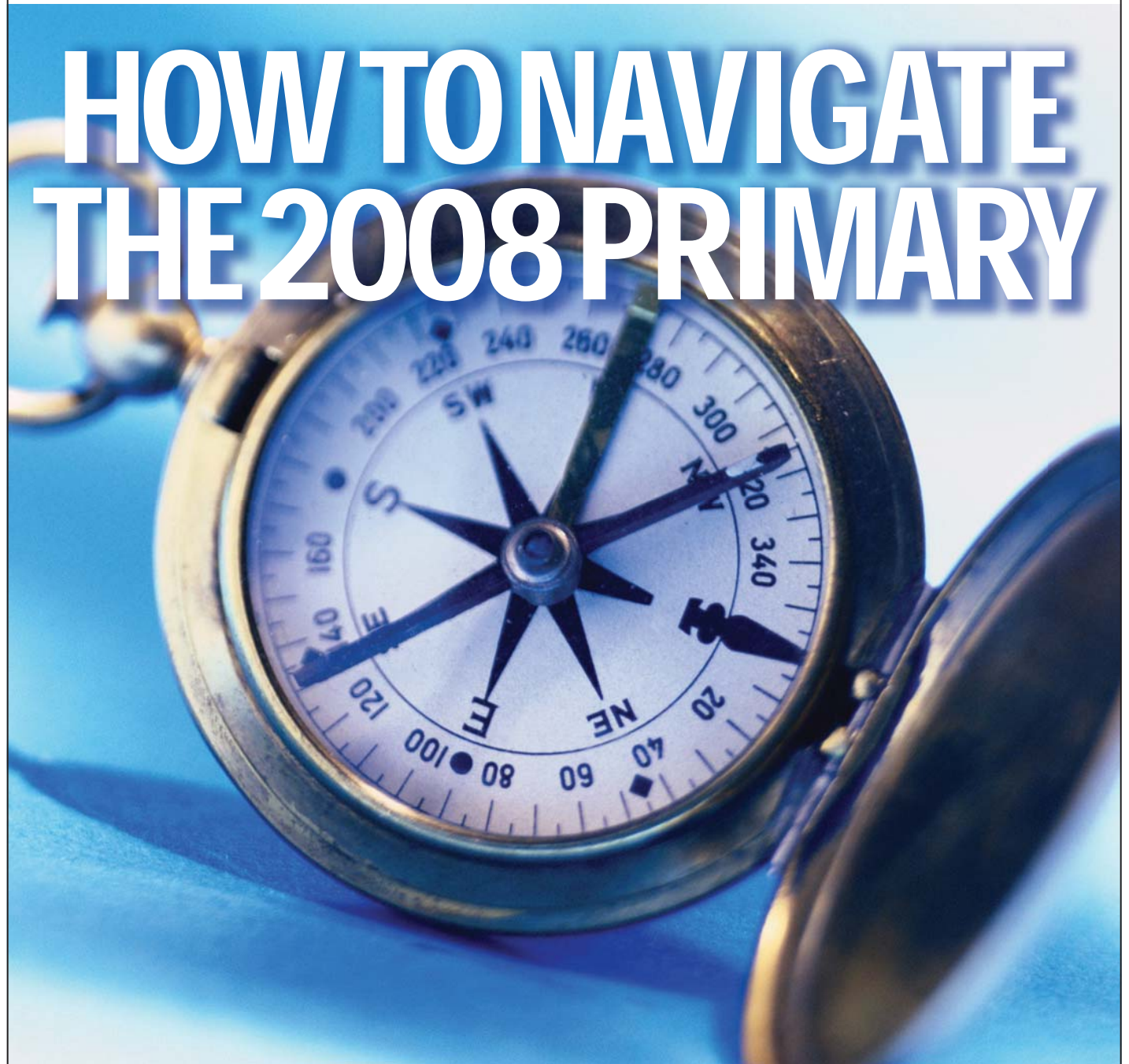


# PIERCE COUNTY'S OFFICIAL LOCAL VOTERS' PAMPHLET

Published by Pierce County Elections • Voter Hotline 253-798-VOTE

## HOW TO NAVIGATE THE 2008 PRIMARY



Pat McCarthy, Pierce County Auditor • 2501 S. 35th Street, Suite C • Tacoma, WA 98409 • (253) 798-VOTE • 1-800-446-4979



# Primary Election - August 19, 2008

Dear Pierce County Voter:

Welcome to the 2008 Primary Voters' Pamphlet. This will be an exciting year with many changes in elections. Our goal in providing this pamphlet is to give you valuable information to [navigate the 2008 Primary Election](#). A sample ballot and a description of what to expect in November is inside. This pamphlet is also filled with information about local issues, from fire districts to cities and towns.

For this Primary, you will not be required to select a party to vote the partisan races on your ballot. Due to a U.S. Supreme Court decision, the Washington State "Pick-a-Party" Primary is gone. Ballots will have candidates listed with their party preference and you will vote for the candidate of your choice. You can only vote for one candidate in each race. The reason this is called a "Top Two" Primary is because the top two vote getters, regardless of party preference, will advance to the General Election in November. See pages 6 and 7 of this pamphlet for more information.

You may be wondering why candidate information is not in this pamphlet. Well, the Secretary of State received legislative authorization and funding to provide a primary voters' pamphlet for statewide offices (state, legislative and judicial), so look for your State Voters' Pamphlet for candidate information.

I am pleased to announce that my office along with the Tacoma Area Coalition for Individuals with Disabilities (TACID) and the Center for Independence (CFI) have joined together in a collaborative effort to increase accessibility for voters with disabilities beginning this Primary Election. New polling locations will be set up at both TACID and CFI offices with accessible touch screen voting machines. See page 4 and 5 for more information. We have worked very hard to continue to provide a range of options for voting. These options include vote-by-mail, express booth ballot drop off sites, polls and e-ballots for our military and overseas voters.

You will not see County level candidates on the Primary ballot (Executive, Assessor-Treasurer, Sheriff, Council) because they will be voted on in a winner take all contest in November, on a Ranked Choice Voting ballot. See page 30 for more information.

Democracy depends on your participation. We are here to provide the best possible service to assist you to exercise your valuable right to vote. If you vote by mail, expect to receive your ballot by August 8, 2008. If you have any questions, call my office at 253-798-VOTE or visit our website at [www.piercecountywa.org/auditor](http://www.piercecountywa.org/auditor).

Sincerely,



Pat McCarthy  
Pierce County Auditor

# Table of Contents

## What's New

Accessible Voting .....	4
Pierce County Elections Center.....	5
Washington has a new Primary.....	6-7
<i>You will find information on all candidates running in the Primary Election in the State of Washington Voters' Pamphlet. If you do not receive a State Pamphlet, please call 1-800-448-4881.</i>	

<b>Express Booth Locations</b> .....	8
--------------------------------------	---

<b>Pierce County District Maps</b> .....	9
--	---

## Sample Ballot

<i>Your ballot will contain only the races and issues on which you are eligible to vote. To determine the Districts you reside in refer to your voter ID card or consult our Info by Address Lookup at: <a href="http://piercecountywa.org/auditor">piercecountywa.org/auditor</a>.</i>	
.....	10-14

## Local Issues

Town of Eatonville.....	15
City of Edgewood .....	16
City of Fircrest .....	17
Town of Ruston.....	18
Fire Protection District No. 2.....	19
Fire Protection District No. 13.....	20
Fire Protection District No. 15.....	21
Fire Protection District No. 21.....	22
Fire Protection District No. 23.....	23

## Are You Ready?

New Voters .....	24
Address Changes.....	25
Military.....	26
Absentee Ballot Request .....	27

<b>Polling Places</b> .....	28-29
-----------------------------	-------

## Coming Soon

Ranked Choice Voting.....	30
Voting is Cool.....	31
Passport and Licensing Fair .....	31

# Accessible Voting



The Pierce County Auditor, Tacoma Area Coalition for Individuals with Disabilities (TACID) and the Center for Independence (CFI) are excited to announce a joint effort to increase accessibility for all voters. The Auditor's Office has joined with these two agencies to provide accessible voting. This effort is possible, in part, as a result of federal grant funding from the Help America Vote Act.

Accessible voting is available on Election Day, August 19, 2008, at the locations listed below from 7:00 a.m. - 8:00 p.m.



6315 S 19th St  
Tacoma, WA 98466

(253) 565-9000 (voice)  
(253) 565-3468 (TTY)



10828 Gravelly Lake Drive SW, Suite 112  
Lakewood, WA 98499

(253) 582-1253 (voice)  
(800) 724-8172 (toll free)

You must be registered in Pierce County to vote at the above locations. Election staff will be on-hand to answer questions and provide assistance upon request. Be sure to bring your identification. If you currently vote by absentee ballot and want to vote using the accessible voting equipment, do not return your absentee ballot.

# Accessible Voting, continued

Accessible voting is also available at the Pierce County Election Center beginning Wednesday, July 30, 2008.



Monday - Friday 8:30 a.m. - 4:30 p.m.  
Tuesday, August 19, 2008 7:00 a.m.- 8:00 p.m.

Contact the Pierce County Elections Division if you have questions.  
(253) 798-7430 (voice)  
(253) 800-833-6388 (TTY)

## Pierce County Elections Center

The Pierce County Elections Center is located in a new facility just to the west of the Pierce County Annex. Staff is available to assist with all of your voting needs, including voter registration and voting.

Our new Elections Center has state of the art security, updated technology and a public viewing corridor that provides a transparent view of our processes. It serves as a central facility for the processing of absentee ballots and the tabulation of election results.

### Pierce County Elections Center

2501 South 35th Street, Suite C  
Tacoma, WA 98409  
(253) 798-VOTE

Customer Service hours:  
8:30 a.m. - 4:30 p.m. Monday - Friday

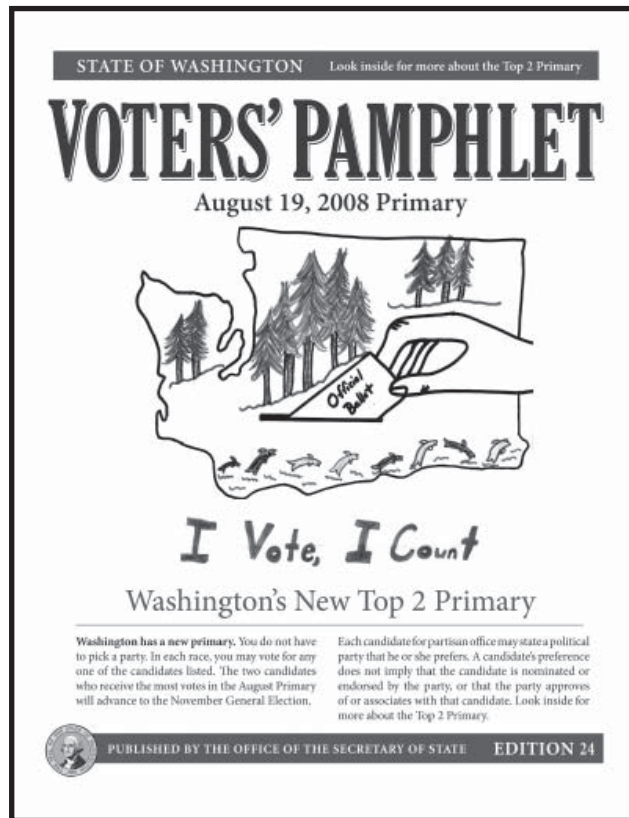
### Directions: From I-5 North/South

1. Take S 38th Street exit - Exit 132
2. From North, immediately take S 38th Street West exit
3. Turn a slight right onto S 38th Street
4. Turn right on S Steele Street
5. Turn right at S 35th Street
6. Take an immediate left into Annex West parking lot.



# Washington has a new Primary

You will find information on all candidates on your Primary Election ballot in the State of Washington Voters' Pamphlet. If you do not receive a State Voters' Pamphlet, please call the Secretary of State's Voter Hotline 1-800-448-4881.



## How did we end up with this Top Two Primary?

Voters passed I-872 in 2004, which created the Top Two Primary. A lawsuit challenging the constitutionality of I-872, stopped the state from conducting an election under this system. In March, 2008 the United States Supreme Court ruled that the state may conduct a Top Two Primary as passed by voters.

## What is a Top Two Primary?

A Top Two Primary is a Primary Election in which the top-two vote getters advance to the General Election, regardless of party affiliation. It changes our way of thinking about the Primary. Instead of the Primary Election being an election where each party chooses its nominee, the Primary Election is now simply a means of qualifying candidates to appear on the General Election ballot. You may vote for one candidate in each race. The two candidates who receive the greatest number of votes will qualify to appear on the general election ballot. Because of this important change, voters will **not** have to select a party ballot, and will be free to vote for whomever they choose, regardless of party affiliation.

## How does this change the General Election?

There are two important changes to the General Election ballot.

- Independent and minor party candidates will appear on the Primary Election ballot.
- Since we are not nominating one candidate from each party to advance, it is possible voters may see two candidates who have listed the same party preference on the General Election ballot.

## What does a candidate's Party Preference really mean?

Candidates are allowed to list their party preference on the ballot, as a way of informing voters which party they personally prefer. This designation does not indicate that the party has selected, nominated, endorsed or otherwise agrees with the views of the candidate. The political parties held nominating conventions and selected their designated candidates, but that designation will not appear on the ballot itself. Voters need to know that the party preference information on the ballot is self-reported by the candidate. Contact your political parties for additional information.

## What offices are affected?

The Top 2 Primary applies to elections for partisan office. This includes the U.S. Senate and House of Representatives, the State Legislature, and partisan statewide offices such as Governor.

## The Top 2 Primary does not apply to elections for:

- President and Vice President;
- Nonpartisan offices, such as judicial office, municipal office, or a fire or school district election;
- Precinct Committee Officer;
- Pierce County will use a different system for choosing some county offices.

## Can a voter still write-in a candidate?

Yes. Each race on the ballot will still have a write-in line for a voter to write in the name of a candidate.

## For More Information Contact:

Pierce County Elections Division  
 2501 S 35th St, Suite C  
 Tacoma, WA 98409  
 (253) 798-VOTE (voice)  
 (800) 446-4979 (toll free)  
 (800) 833-6388 (TTY)  
[www.piercecountywa.org/elections](http://www.piercecountywa.org/elections)



# Express Booth Locations

Drop your ballot off postage free at a drive-up Vote By Mail Express Booth.

Or just add a stamp and return your ballot through the U.S. Mail.  
The choice is yours.

Open 7:00 a.m. - 8:00 p.m.  
August 15 - August 19, 2008



## Browns Point

Town Center at Browns Point  
1000 Town Center

## Bonney Lake

Fred Meyer  
20901 Hwy 410

## Edgewood/Milton

Surprise Lake Shopping Center  
900 Meridian E

## Gig Harbor

Purdy Fire Station  
5210 144th Street NW

## Safeway/Big 5

4811 Point Fosdick Square

## Lakewood

Lakewood Towne Center  
6000 Main Street SW

## South Hill

Thun Field  
16715 Meridian E

## Sumner

Sumner Fred Meyer  
1201 Valley Avenue

## Puyallup

Fred Meyer  
1100 N Meridian/River Rd

## Parkland/Spanaway

Bethel Station Rite Aid  
22311 Mountain Hwy E

## Sprinker Recreation Center

14824 South C Street

## University Place

Green Firs Shopping Center  
40th & Bridgeport Way

## Tacoma

Pierce County Annex  
2401 South 35th Street

## Rite Aid

1912 North Pearl Street

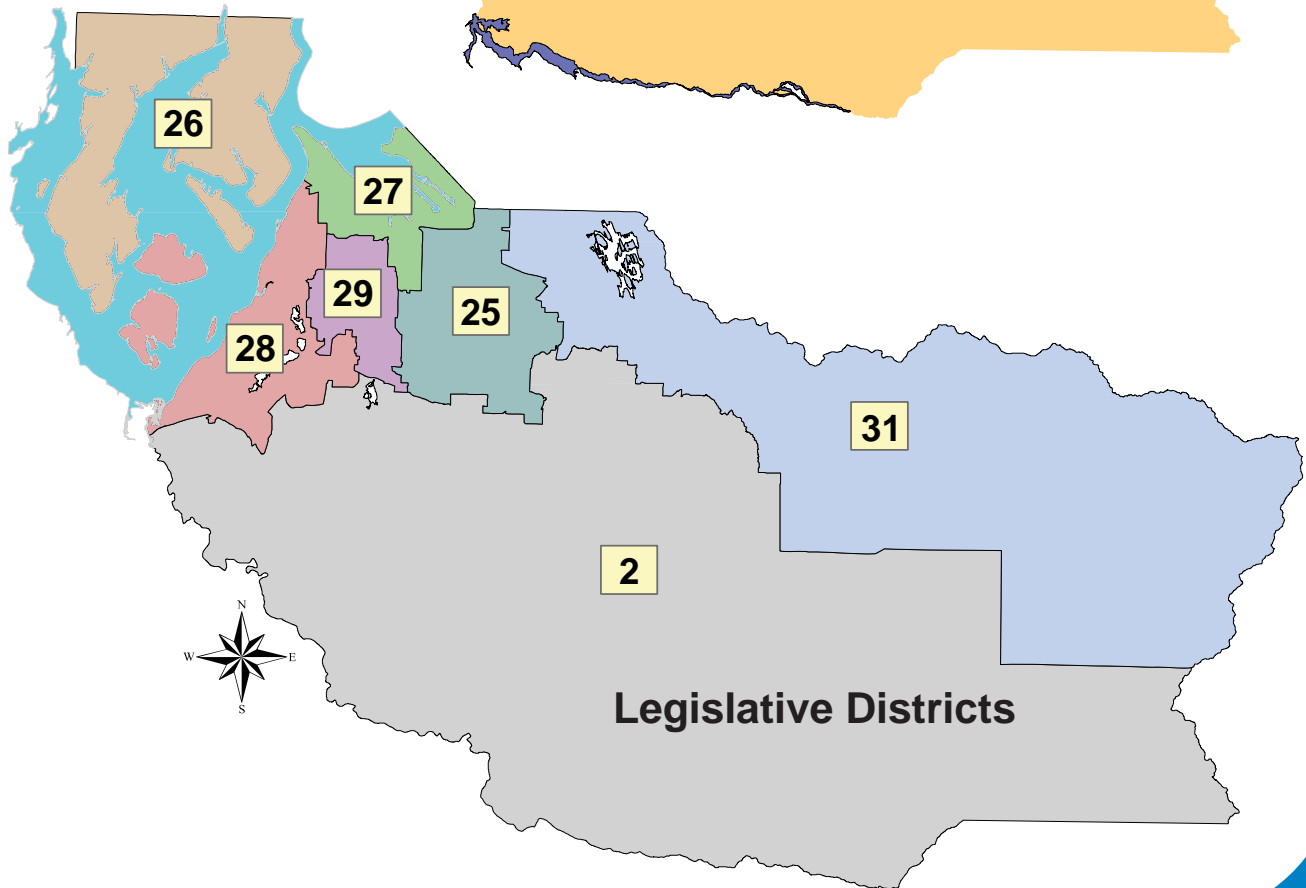
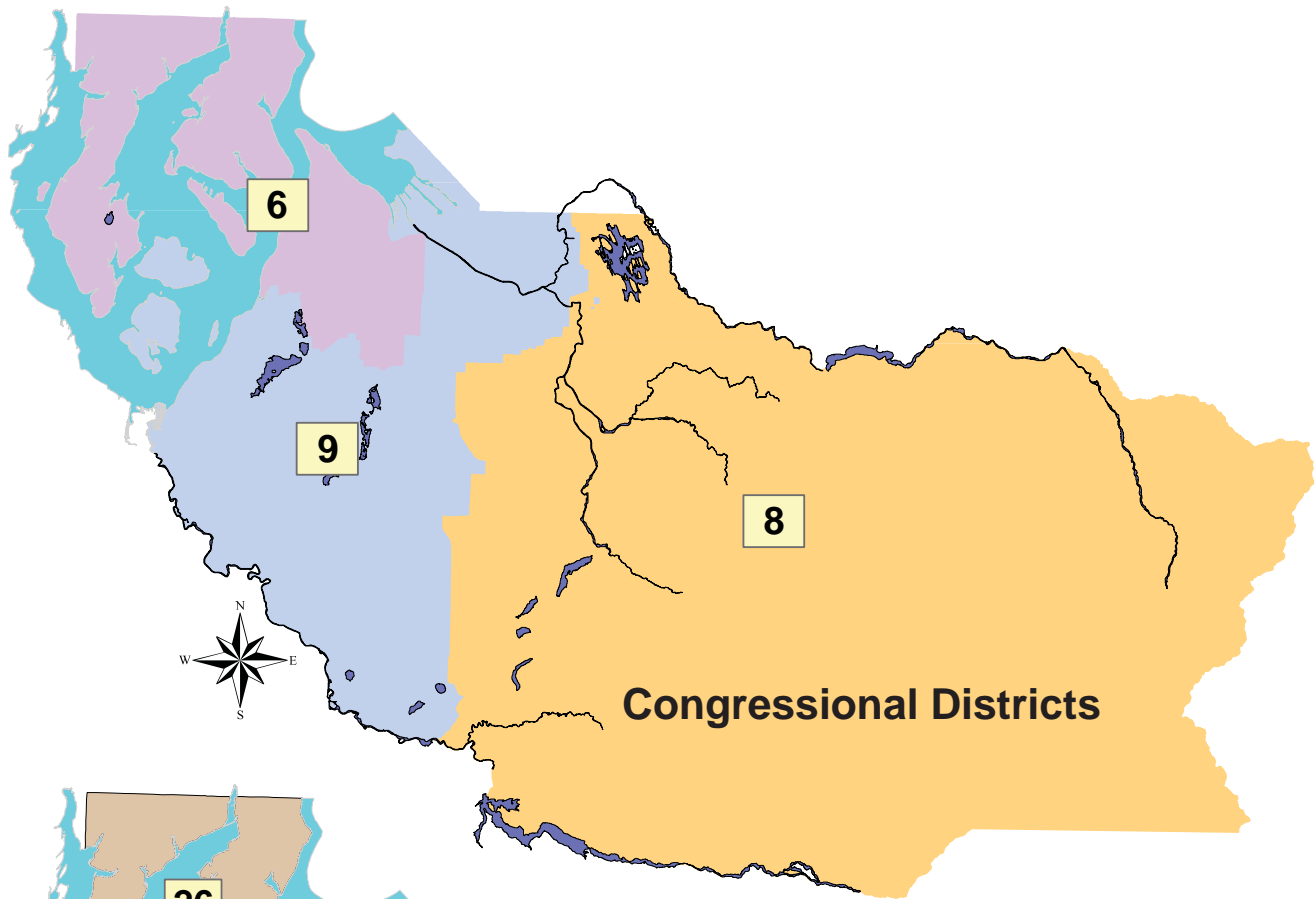
## Oasis of Hope

1937 South G Street

## County-City Building (no drive up)

930 Tacoma Avenue South  
2nd Floor Lobby (drop box)  
Open 8 a.m. to 4:30 p.m.

# Pierce County District Maps



**PARTISAN OFFICES**  
**READ:** Each candidate for partisan office may state a political party that he or she prefers. A candidate's preference does not imply that the candidate is nominated or endorsed by the party, or that the party approves of or associates with that candidate.  
**Vote for only one candidate in each race.**

**Federal Partisan Office**

**U.S. Representative 6th Congressional District**  
 (Vote for One)

**Doug Cloud**  
 (Prefers Republican Party)

**Norm Dicks**  
 (Prefers Democratic Party)

**Paul Richmond**  
 (Prefers Democratic Party)

**Gary Murrell**  
 (Prefers Green Party)

(Write-In)

**U.S. Representative 8th Congressional District**  
 (Vote for One)

**Boleslaw (John) Orlinski**  
 (States No Party Preference)

**Richard Todd**  
 (States No Party Preference)

**James E. Vaughn**  
 (Prefers Democratic Party)

**Dave Reichert**  
 (Prefers Republican Party)

**Keith Arnold**  
 (Prefers Democratic Party)

**Darcy Burner**  
 (Prefers Democratic Party)

(Write-In)

**U.S. Representative 9th Congressional District**  
 (Vote for One)

**Adam Smith**  
 (Prefers Democratic Party)

**James Postma**  
 (Prefers Republican Party)

(Write-In)

**State of Washington Partisan Offices**

**Governor**  
 (Vote for One)

**Dino Rossi**  
 (Prefers G.O.P. Party)

**Will Baker**  
 (Prefers Reform Party)

**Christine Gregoire**  
 (Prefers Democratic Party)

**Duff Badgley**  
 (Prefers Green Party)

**John W. Aiken, Jr.**  
 (Prefers Republican Party)

**Christian Pierre Joubert**  
 (Prefers Democratic Party)

**Christopher A. Tudor**  
 (States No Party Preference)

**Javier O. Lopez**  
 (Prefers Republican Party)

**Mohammad Hasan Said**  
 (States No Party Preference)

**James White**  
 (Prefers Independent Party)

(Write-In)

**Lieutenant Governor**  
 (Vote for One)

**Brad Owen**  
 (Prefers Democratic Party)

**Marcia McCraw**  
 (Prefers Republican Party)

**Arlene A. Peck**  
 (Prefers Constitution Party)

**Jim Wiest**  
 (Prefers G.O.P. Party)

**Randel Bell**  
 (Prefers Democratic Party)

(Write-In)

**Secretary of State**  
 (Vote for One)

**Sam Reed**  
 (Prefers Republican Party)

**Mark Greene**  
 (Prefers Party Of Commons Party)

**Jason Osgood**  
 (Prefers Democratic Party)

**Marilyn Montgomery**  
 (Prefers Constitution Party)

(Write-In)

**State of Washington Partisan Offices**

**State Treasurer**  
 (Vote for One)

**Allan Martin**  
 (Prefers Republican Party)

**Jim McIntire**  
 (Prefers Democratic Party)

**ChangMook Sohn**  
 (Prefers Democratic Party)

(Write-In)

**State Auditor**  
 (Vote for One)

**Brian Sonntag**  
 (Prefers Democratic Party)

**Glenn Freeman**  
 (Prefers Constitution Party)

**J. Richard (Dick) McEntee**  
 (Prefers Republican Party)

(Write-In)

**Attorney General**  
 (Vote for One)

**John Ladenburg**  
 (Prefers Democratic Party)

**Rob McKenna**  
 (Prefers Republican Party)

(Write-In)

**Commissioner of Public Lands**  
 (Vote for One)

**Peter J. Goldmark**  
 (Prefers Democratic Party)

**Doug Sutherland**  
 (Prefers Republican Party)

(Write-In)

**See State Voter Pamphlet for candidate information and statements.**

STATE OF WASHINGTON Look inside for more about the Top 2 Primary

**VOTERS' PAMPHLET**

August 19, 2008 Primary

**I Vote, I Count**

Washington's New Top 2 Primary

Washington has a new primary. You do not have to pick a party in each race, and you vote for one of the candidates listed. The two candidates who receive the most votes in the August Primary will advance to the November General Election.

Each candidate for partisan office may state their political party that he or she prefers. A candidate's preference does not imply that the candidate is nominated or endorsed by the party, or that the party approves of or associates with that candidate. Look inside for more about the Top 2 Primary.

PUBLISHED BY THE OFFICE OF THE SECRETARY OF STATE EDITION 34

**State of Washington Nonpartisan Office**

Superintendent of Public Instruction  
Nonpartisan Office  
(Vote for One)

**John Patterson Blair** ←

**Don Hansler** ←

**Randy Dorn** ←

**David Blomstrom** ←

**Enid Duncan** ←

**Teresa (Terry) Bergeson** ←

(Write-In) ←

**State of Washington Partisan Office**

Insurance Commissioner  
(Vote for One)

**Mike Kreidler** ←  
(Prefers Democratic Party)

**John R. Adams** ←  
(Prefers Republican Party)

**Curtis Fackler** ←  
(States No Party Preference)

(Write-In) ←

**2nd Legislative District Partisan Offices**

State Senator - 2nd Legislative District  
(Vote for One)

**Randi Becker** ←  
(Prefers Republican Party)

**Marilyn Rasmussen** ←  
(Prefers Democratic Party)

**Kelly Mainard** ←  
(Prefers Republican Party)

(Write-In) ←

**2nd Legislative District Partisan Offices**

State Representative  
2nd Legislative District - Position No. 1  
(Vote for One)

**Jim McCune** ←  
(Prefers G.O.P. Party)

**Chuck Collins** ←  
(Prefers Democratic Party)

**JeanMarie Christenson** ←  
(Prefers Democratic Party)

**Ray Harper** ←  
(Prefers Democratic Party)

(Write-In) ←

State Representative  
2nd Legislative District - Position No. 2  
(Vote for One)

**Tom Campbell** ←  
(Prefers Republican Party)

**Michael C. Powell** ←  
(Prefers Democratic Party)

**Rick Payne** ←  
(Prefers Democratic Party)

(Write-In) ←

**25th Legislative District Partisan Offices**

State Senator - 25th Legislative District  
(Vote for One)

**Michele Smith** ←  
(Prefers Republican Party)

**Jim Kastama** ←  
(Prefers Democratic Party)

(Write-In) ←

State Representative  
25th Legislative District - Position No. 1  
(Vote for One)

**Laurence M. Pratt** ←  
(Prefers Progressive Party)

**Bruce Dammeier** ←  
(Prefers Republican Party)

**Rob Cerqui** ←  
(Prefers Democratic Party)

(Write-In) ←

**25th Legislative District Partisan Offices**

State Representative  
25th Legislative District - Position No. 2  
(Vote for One)

**Dawn Morrell** ←  
(Prefers Democratic Party)

**Ron Morehouse** ←  
(Prefers Republican Party)

**Caleb Heimlich** ←  
(Prefers Republican Party)

(Write-In) ←

**26th Legislative District Partisan Offices**

State Representative  
26th Legislative District - Position No. 1  
(Vote for One)

**Jan Angel** ←  
(Prefers G.O.P. Party)

**Kim Abel** ←  
(Prefers Democratic Party)

(Write-In) ←

State Representative  
26th Legislative District - Position No. 2  
(Vote for One)

**Marlyn Jensen** ←  
(Prefers Republican Party)

**Larry Seaquist** ←  
(Prefers Democratic Party)

(Write-In) ←

**27th Legislative District Partisan Offices**

State Senator - 27th Legislative District  
(Vote for One)

**Debbie Regala** ←  
(Prefers Democratic Party)

**Larry Faulk** ←  
(Prefers Republican Party)

(Write-In) ←

**27th Legislative District Partisan Offices**

State Representative  
27th Legislative District -  
Position No. 1  
(Vote for One)

**Brent Wiley**  
(Prefers Republican Party)

**Dale Woodard**  
(Prefers Republican Party)

**Jessica Smeall**  
(Prefers Democratic Party)

**Dennis Flannigan**  
(Prefers Democratic Party)

(Write-In)

State Representative  
27th Legislative District -  
Position No. 2  
(Vote for One)

**Jeannie Darneille**  
(Prefers Democratic Party)

**William Edward Chovil**  
(Prefers Republican Party)

(Write-In)

**28th Legislative District Partisan Offices**

State Senator - 28th Legislative  
District  
(Vote for One)

**Debi Srail**  
(Prefers Democratic Party)

**Mike Carrell**  
(Prefers Republican Party)

(Write-In)

State Representative  
28th Legislative District -  
Position No. 1  
(Vote for One)

**Troy Kelley**  
(Prefers Democratic Party)

**Dave Dooley**  
(Prefers G.O.P. Party)

(Write-In)

State Representative  
28th Legislative District -  
Position No. 2  
(Vote for One)

**Tami Green**  
(Prefers Democratic Party)

(Write-In)

**29th Legislative District Partisan Offices**

State Representative  
29th Legislative District -  
Position No. 1  
(Vote for One)

**Steven T. Cook**  
(Prefers Republican Party)

**Steve Conway**  
(Prefers Democratic Party)

(Write-In)

State Representative  
29th Legislative District -  
Position No. 2  
(Vote for One)

**Steve Kirby**  
(Prefers Democratic Party)

**Terry Harder**  
(Prefers Republican Party)

(Write-In)

**31st Legislative District Partisan Offices**

State Representative  
31st Legislative District -  
Position No. 1  
(Vote for One)

**Ron Weigelt**  
(Prefers Democratic Party)

**Dan Roach**  
(Prefers Republican Party)

(Write-In)

State Representative  
31st Legislative District -  
Position No. 2  
(Vote for One)

**Christopher Hurst**  
(Prefers Democratic Party)

**Josh Hulburt**  
(Prefers Republican Party)

**Sharon Hanek**  
(Prefers Republican Party)

(Write-In)

**State Supreme Court**

State Supreme Court Justice  
Position No. 3  
(Vote for One)

**Mary Fairhurst**

**Michael J. Bond**

(Write-In)

**State Supreme Court**

State Supreme Court Justice  
Position No. 4  
(Vote for One)

**Charles W. Johnson**

**C. F. (Frank) Vulliet**

**James M. Beecher**

(Write-In)

State Supreme Court Justice  
Position No. 7  
Short Term - Six Year Term (Vote for One)

**Debra L. Stephens**

(Write-In)

**Court of Appeals**

Court of Appeals,  
Division No. 2  
District No. 1 - Position No. 2  
(Vote for One)

**Elaine Houghton**

(Write-In)

**Pierce County Superior Court**

Superior Court - Department  
No. 9  
(Vote for One)

**Michael Hecht**

**Sergio Armijo**

(Write-In)

**Town of Eatonville**

Special Election – Proposition No. 1  
Submitted by the Town of Eatonville

**LEVY LID LIFT FOR FIRE AND EMERGENCY MEDICAL SERVICES**

The Town Council adopted Ordinance 2008-10 concerning funding for fire and emergency services. If approved, this proposition would fund fire and emergency medical services, including the transition from an all-volunteer to a part-time volunteer and part full-time fire department. This proposition authorizes a 2009 regular property tax rate increase of \$1.02/\$1,000, for a total estimated levy rate of \$2.71/\$1,000 assessed value. The 2009 levy amount shall be used to calculate subsequent levy limits. Should Proposition No. 1 be:

APPROVED

REJECTED

---

**City of Edgewood**

Special Election – Proposition No. 1  
Submitted by the City of Edgewood

**GENERAL OBLIGATION COMMUNITY PARK AND RECREATION FACILITIES BONDS - \$8,000,000**

The City Council of the City of Edgewood adopted Ordinance No. 08-0302 concerning a community park bond proposition. If approved, this proposition authorizes the City to develop the Northeast corner of Meridian Avenue East and 36<sup>th</sup> Street East into a multi-use active community park, including athletic recreation facilities, play areas, splash court, picnic shelters and trails; to issue its general obligation bonds in the aggregate principal amount not to exceed \$8,000,000, maturing within a maximum of 20 years; and to levy property taxes annually in excess of regular property tax levies to repay such bonds. Should Proposition No. 1 be:

APPROVED

REJECTED

**City of Fircrest**

Special Election – Proposition No. 1  
Submitted by the City of Fircrest

**EMERGENCY MEDICAL CARE AND SERVICES**

Shall the City of Fircrest's authority to impose regular property tax levies of up to fifty cents or less per thousand dollars of assessed valuation for emergency medical care and services be renewed for six consecutive years?

YES

NO

---

**Town of Ruston**

Special Election – Proposition No. 1  
Submitted by the Town of Ruston

**ADOPTING A COUNCIL-MANAGER FORM OF GOVERNMENT**

The Ruston Town Council adopted Resolution 414 concerning changing the form of government from a Mayor-Council form of government to a Council-Manager form of government. Shall the Town of Ruston adopt the Council-Manager plan of municipal government?

For organization as a Council-Manager town

Against organization as a Council-Manager town

**Lakewood Fire Department**

Special Election – Proposition No. 1  
Submitted by Pierce County Fire Protection District No. 2  
(Lakewood Fire Department)

**AUTHORIZING RENEWAL OF PROPERTY TAX LEVY FOR MAINTENANCE AND OPERATION EXPENSES**

The Board of Fire Commissioners of Pierce County Fire Protection District No. 2 (Lakewood Fire Department) adopted Resolution No. 051208-011 concerning a proposition to finance maintenance and operation expenses. If passed, Proposition No. 1 would permit the District to levy, without regard to the dollar rate and percentage limitations imposed by Ch. 84.52 RCW, a tax on all taxable property within the District of approximately:

Levy Year	Collection Year	Approximate Levy Rate per \$1,000 of Assessed Value	Levy Amount
2008	2009	\$0.87	\$5,412,000
2009	2010	\$0.87	\$5,863,000

and used for maintenance and operation expenses to maintain the current level of fire services and emergency medical services as provided in Resolution No. 051208-011. Should this proposition be approved?

YES

NO

**Fire Protection District No. 13**

Special Election – Proposition No. 1  
Submitted by Pierce County Fire Protection District No. 13

**RE-AUTHORIZING PREVIOUSLY EXISTING PROPERTY TAX LEVY RATE**

The Board of Fire Commissioners of Pierce County Fire Protection District No. 13 passed Resolution No. 08-253 proposing to re-authorize the previously existing regular property tax levy rate. If passed, Proposition No. 1 would permit the District to levy for collection beginning in 2009 the regular property tax at the rate of \$1.00 per \$1,000 of assessed valuation, which is the rate authorized previously by the voters, thereby lifting the revenue limitation in Chapter 84.55 RCW. Should Proposition No. 1 be:

\_\_\_\_\_  
APPROVED ←

\_\_\_\_\_  
REJECTED ←

**South Pierce Fire and Rescue**

Special Election – Proposition No. 1  
Submitted by Pierce County Fire Protection District No. 15  
(South Pierce Fire and Rescue)

**MERGER OF PIERCE COUNTY FIRE PROTECTION DISTRICTS**

The Board of Fire Commissioners of Pierce County Fire Protection District No. 15 ("District 15") adopted Resolution No. 08-012 concerning a merger with Pierce County Fire Protection District No. 17 ("District 17"). If approved, Proposition No. 1 would result in a merger of District 15 into District 17, thereby creating one fire protection district under the name of Pierce County Fire Protection District 17. Should Proposition No. 1 be:

\_\_\_\_\_  
APPROVED ←

\_\_\_\_\_  
REJECTED ←

**Graham Fire and Rescue**

Special Election – Proposition No. 1  
Submitted by Pierce County Fire Protection District No. 21  
(Graham Fire & Rescue)

**GENERAL OBLIGATION BONDS - \$12,000,000**

The Board of Fire Commissioners of Pierce County Fire Protection District No. 21 (Graham Fire & Rescue) adopted Resolution 696 concerning financing fire station and fire fighting and lifesaving equipment. This proposition authorizes the District to acquire, construct and equip two new fire stations; make related capital improvements; and retire an outstanding debt issued for prior fire station costs. The District would issue no more than \$12,000,000 of general obligation bonds maturing within a maximum term of 12 years to finance such improvements, and to levy property taxes annually in excess of regular property tax levies to pay and retire such bonds, as provided in Resolution 696. Should Proposition No. 1 be:

\_\_\_\_\_  
APPROVED ←

\_\_\_\_\_  
REJECTED ←

**Fire Protection District No. 23**

Special Election – Proposition No. 1  
Submitted by Pierce County Fire Protection District No. 23

**AUTHORIZING EMERGENCY MEDICAL SERVICES PROPERTY TAX LEVY**

The Board of Fire Commissioners of Pierce County Fire Protection District No. 23 passed Resolution No. 08-002 proposing to authorize the imposition of an Emergency Medical Services property tax levy. If passed, Proposition No. 1 would permit the District to levy for collection commencing in 2009 the regular property tax at the rate of \$.50 per \$1,000 of assessed valuation for each of six (6) consecutive years for emergency medical services. Shall Proposition No. 1 be approved:

\_\_\_\_\_  
YES ←

\_\_\_\_\_  
NO ←

**Precinct Committee Officer**

The office of Precinct Committee Officer positions will appear at the end of your ballot. For this office only, if you consider yourself a Democrat or a Republican, you may vote for a candidate of that party. Vote for only one candidate.

## Town of Eatonville

### Levy Lid Lift for Fire and Emergency Medical Services

#### Ballot Title:

The Town Council adopted Ordinance 2008-10 concerning funding for fire and emergency services. If approved, this proposition would fund fire and emergency medical services, including the transition from an all-volunteer to a part-time volunteer and part full-time fire department. This proposition authorizes a 2009 regular property tax rate increase of \$1.02/\$1,000, for a total estimated levy rate of \$2.71/\$1,000 assessed value. The 2009 levy amount shall be used to calculate subsequent levy limits. Should Proposition No. 1 be approved or rejected?

#### Explanatory Statement:

The fire department in Eatonville has been a volunteer department for nearly 100 years. Proposition 1 would authorize the Town of Eatonville to levy regular property taxes starting in 2009 to enhance Fire and Emergency Medical Services. The Town would use this money exclusively for the purpose of employing paid firefighter paramedics and firefighter emergency medical technicians, emergency equipment and to lower response times.

The "levy lid" limits annual property taxes to 101% of the Town's previous highest levy amount, plus certain adjustments (e.g., new construction), unless voters approve a proposition for a greater increase. If approved by voters, this ballot measure would authorize the Town to increase regular real property taxes by \$1.02 per \$1,000 of assessed valuation over the 2008 levy rate.

The levy would commence in 2009. The levy would raise approximately \$225,000 annually to be used exclusively to fund the Town's fire and emergency medical services. This will be a permanent funding source to ensure continued fire and emergency medical services to the citizens of Eatonville.

#### For Statement:

On April 1, 2008, the Town lost its paramedic support from the surrounding fire departments. The main reason was our lack of financial support for the fire department. Critical advanced life support (ALS) must now come from Puyallup when it is available.

This levy money will allow the Town to hire full time firefighters and paramedics. For the first time in almost 100 years of existence we will have firefighters and paramedics on duty 24 hours per day, seven days a week.

The Fire Department will expand its ambulance transport program and citizens of Eatonville will pay nothing out of pocket for transport to the hospital by Eatonville Fire next year.

This support will make the Eatonville Fire Department ALS-capable and will likely reinstate mutual aid with our neighboring Fire Departments. This mutual aid will mean four other ALS Fire Departments will come to our aid whenever needed.

**Committee Members:** Bud Lucas: (360) 832-6256, Bobbi Allison and Bruce Rath

#### Against Statement:

No statement was submitted against this issue.

## City of Edgewood

### General Obligation Community Park and Recreation Facilities Bonds - \$8,000,000

#### Ballot Title:

The City Council of the City of Edgewood adopted Ordinance No. 08-0302 concerning a community park bond proposition. If approved, this proposition authorizes the City to develop the Northeast corner of Meridian Avenue East and 36<sup>th</sup> Street East into a multi-use active community park, including athletic recreation facilities, play areas, splash court, picnic shelters and trails; to issue its general obligation bonds in the aggregate principal amount not to exceed \$8,000,000, maturing within a maximum of 20 years; and to levy property taxes annually in excess of regular property tax levies to repay such bonds. Should Proposition No. 1 be approved or rejected?

#### Explanatory Statement:

The City Council of the City of Edgewood adopted an Ordinance requesting the placement of a community park bond proposition on the August 19, 2008 ballot. This proposition authorizes the City to issue its general obligation bonds in the aggregate principal amount not to exceed \$8,000,000, maturing within a maximum of 20 years; and to levy property taxes annually in excess of regular property tax levies to repay such bonds. These funds would be used to develop the northeast corner of Meridian Avenue East (SR 161) and 36<sup>th</sup> Street East into a multi-use active community park. The park's planned recreation facilities include a synthetic soccer field, a baseball field, basketball court, playground areas, splash court and tennis courts. Other amenities include a small amphitheater, picnic shelters, restrooms, lighting, parking, trails and open space areas.

Because this is the first time the City of Edgewood has proposed a bond measure, the City has no other voted bond obligations outstanding. Approval of this proposition will allow phased construction to begin in 2009. Rejection of this proposition will delay construction to a time indefinite.

#### For Statement:

Edgewood is a vital community of more than 9,560 people. It is not meeting the huge demand for active recreation facilities. This 18 acre multi-use community park is designed to do that. It will provide a place to watch your favorite sports or to take a stroll with your pet, a jog on the trail; a clean environment for picnicking or playing with your children; a place that offers something for virtually everyone.

The location will serve as a gateway entrance to the City, and a symbol of civic pride that invites people to stop and enjoy Edgewood. This park is an investment that will facilitate and promote active healthy lifestyles for generations. **Yes**, constructing this park comes with a price tag. **Yes**, costs will likely continue to escalate. So, **yes**, the best time to build is now. Support your community; invest in Edgewood's future; vote **yes** Edgewood Community Park.

**Committee Members:** Diane Kerlin: (253) 863-3724, drkerlin@comcast.net, Johnny Johnson and Nita Huber

#### Against Statement:

No statement was submitted against this issue.

# City of Fircrest

## Emergency Medical Care and Services

### Ballot Title:

Shall the City of Fircrest's authority to impose regular property tax levies of up to fifty cents or less per thousand dollars of assessed valuation for emergency medical care and services be renewed for six consecutive years?

### Explanatory Statement:

In 1991, 1996 and again in 2002, City of Fircrest voters approved a six-year levy for emergency medical services (EMS). The money from this Levy helps to offset the costs of emergency medical services provided by the Fire Department.

All monies collected from the EMS Levy are used to pay for Advanced Life Support Services (ALS) and Basic Life Support Services (BLS) in the City of Fircrest. The Levy pays for a full-time paramedic in the fire station, emergency medical technicians, heart monitor, miscellaneous ALS and BLS equipment, and covers all direct advanced life support transportation costs provided by the Fire Department for Fircrest residents – except for exclusions disallowed by the U.S. Government.

If approved for the next six years, the current rate of 50 cents per \$1,000 of assessed value would continue. As a homeowner in Fircrest, if you own a home valued at \$100,000, you would pay \$50 per year for this service.

Passage of this new levy would continue the current level of service provided by the Fire Department at the same rate as the current levy.

### For Statement:

The Emergency Medical Services Levy is renewed every six years, and its approval provides City of Fircrest residents with twenty-four hour paramedic and transportation services to area hospitals. These services are contracted through the Tacoma Fire Department's Station 17, located in Fircrest, with further EMS support from surrounding stations within Tacoma's EMS system if needed. Since the last levy passed in 2002, the number of dispatched calls has increased 7.1% per year, (302 versus 434) and 83% involved an emergency situation in which service was provided to Fircrest residents.

One possible explanation for this increased demand on the EMS system, is an aging Fircrest population, with baby boomers starting to demonstrate their impact on the medical health care system. It is becoming increasingly clear that our community should continue to provide this valuable service to the citizens of Fircrest. Vote yes for the EMS levy renewal in August election.

**Committee Members:** Barry Fiske, Blake Surina and Joseph Quinn, Fircrest Pro-EMS Committee, (253) 564-6050

### Against Statement:

No statement was submitted against this issue.

# Town of Ruston

## Adopting a Council-Manager Form of Government

**Ballot Title:**

The Ruston Town Council adopted Resolution 414 concerning changing the form of government from a Mayor-Council form of government to a Council-Manager form of government. Shall the Town of Ruston adopt the Council-Manager plan of municipal government?

**Explanatory Statement:**

If approved by the voters, the Town of Ruston would change from a Mayor-Council to a Council-Manager form of government (Chapter 35.18 RCW). The Council shall appoint an officer whose title shall be "Town Manager" who shall be the chief executive officer and head of the administrative branch of Town government. The Town Manager shall be responsible to the Council for the proper administration of all affairs of the Town. The Town Manager shall be a paid executive chosen on the basis of his or her executive and administrative qualifications and experience. All Town staff and department heads shall report to the Town Manager.

If approved, the traditional office of the "Mayor" would no longer exist. Under the Council-Manager form of government, the Council members shall be the only elected officials. The Council would choose a Councilmember to act as "mayor." The council member acting as mayor shall preside at meetings of the Council, and be recognized as the head of the Town for all ceremonial purposes and by the governor for purposes of military law.

**For Statement:**

Ruston needs a qualified Town Manager to direct staff, budgeting, growth and to provide leadership needed to address the following issues:

**Development** - A strong, non-elected, professional manager is the best solution for Ruston's growth and development of the ASARCO site. A Town-Manager would transcend the political process and provide stable oversight for this complex project, re-development of Pearl Street, development at the end of Orchard Street and continued development, redevelopment and preservation in the rest of Ruston.

**Finances** - Ruston is running-out of money. Our survival is directly linked to future development. The way our finances are managed will decide whether we remain independent or not. Competent, fiscal management is mandatory.

**Public Services** - Ruston's crumbling infrastructure and the increased stress that is being placed on our public services due to increased development require us to make tough decisions soon. A qualified municipal professional is needed for immediate analysis and leadership.

*Committee Members: Sherri Forch and Jane Hunt*

**Rebuttal of Against Statement:**

**This change will save Ruston hundreds of thousands of dollars by reducing the reliance on expensive consultants.**

**Major improvement:** A professional manager eliminates an additional level of bureaucracy by replacing the mayor. Ruston needs a full time, Manager to address our growth and development issues and work with the Town Council.

**Balance of Power:** An apolitical Manager will preserve the balance of power, protect and supervise Town staff, and keep politics out of Town Hall.

*Committee Members: Sherri Forch and Jane Hunt*

**Against Statement:**

**This change would cost more money, not improve services and remove an important balance of power.** Like 81% of Washington cities, having a mayor has served Ruston well for over a 100 years.

**Cost:** The council acknowledges a good manager's annual salary is about \$100,000. We are a very small town with grave financial challenges right now. This only adds a new layer of bureaucracy with no added services.

**No Improvement:** A mayor can hire professional help as well as a manager. Ruston's major development is already set. This does not improve those important projects.

**Balance of Power:** Balance and varied input is vital in a small town. A mayor gives protection for town employees from political whims and critical administrative stability for Ruston's citizens.

*This change does nothing to address Ruston's current challenges. There are **no compelling reasons** to eliminate this important balance of power.*

*Committee Member: Karen Pickett*

**Rebuttal of For Statement:**

This decision changes Ruston's direction **forever**. It must be based on long-term, not short-term issues. The council is responsible for sound fiscal and land use policy. A temporary manager can be hired if needed for our major development, most of which will be decided before this measure takes effect. Even fully developed, *Ruston will be a small community that is best served by an accessible mayor who answers to the voters, not an expensive bureaucrat.*

*Committee Member: Karen Pickett*

# Pierce County Fire Protection District No. 2 (Lakewood Fire Department)

## Authorizing Renewal of Property Tax Levy For Maintenance and Operation Expenses

### Ballot Title:

The Board of Fire Commissioners of Pierce County Fire Protection District No. 2 (Lakewood Fire Department) adopted Resolution No. 051208-011 concerning a proposition to finance maintenance and operation expenses. If passed, Proposition No. 1 would permit the District to levy, without regard to the dollar rate and percentage limitations imposed by Ch. 84.52 RCW, a tax on all taxable property within the District of approximately:

<u>Levy Year</u>	<u>Collection Year</u>	<u>Approximate Levy Rate per \$1,000 of Assessed Value</u>	<u>Levy Amount</u>
2008	2009	\$0.87	\$5,412,000
2009	2010	\$0.87	\$5,863,000

and used for maintenance and operation expenses to maintain the current level of fire services and emergency medical services as provided in Resolution No. 051208-011. Should this proposition be approved?

### Explanatory Statement:

Lakewood Fire Department is requesting renewal of the maintenance and operation levy, at a reduced tax rate, for two years. The department and the voters have found it necessary to supplement the regular levy since 1974. In 1939, the legislature established fire districts to serve rural areas, rather than urban areas like Lakewood. The regular levy is inadequate to provide fire, emergency medical and rescue services to a city of more than 67,000 people, a hospital, two colleges, a major state mental institution, and a regional shopping mall.

This levy funds about 25% of the department's budget. It will cost approximately \$0.870 per thousand dollars of assessed value in 2009 and 2010. (The 2008 rate was \$0.976 per thousand.) The law prohibits any further tax levies for maintenance and operational support of the district for this two-year period, if the voters approve this special levy.

Lakewood Fire Department is a fully paid department providing advanced fire suppression, fire prevention and code enforcement, emergency medical and rescue services throughout Lakewood.

### For Statement:

Lakewood Fire District 2 needs your support. We are asking you to **Vote Yes** for our two-year maintenance and operations levy. This is not a new tax, but rather a continuation of supplemental funding that has been supported by Lakewood citizens for the past 30 years.

You might ask - what does this levy mean to me? Approximately 25% of operational funding depends on this levy. Failure of this vital levy will increase response times, slow service delivery, and ultimately create poorer outcomes when citizens need assistance. Continuing to support this levy allows us to maintain the current level of exceptional service citizens of Lakewood have come to expect.

The fire district does not receive funding through the City of Lakewood, Pierce County, or the State of Washington.

**Vote Yes and Keep Help Coming!**

**Committee Members:** Layne Bladow - (253) 584-1488, Bart Dalton and Koree Baker, Citizens for Lakewood Fire Protection

### Against Statement:

No statement was submitted against this issue.

## Pierce County Fire Protection District No. 13 Re-authorizing Previously Existing Property Tax Levy Rate

**Ballot Title:**

The Board of Fire Commissioners of Pierce County Fire Protection District No. 13 passed Resolution No. 08-253 proposing to re-authorize the previously existing regular property tax levy rate. If passed, Proposition No. 1 would permit the District to levy for collection beginning in 2009 the regular property tax at the rate of \$1.00 per \$1,000 of assessed valuation, which is the rate authorized previously by the voters, thereby lifting the revenue limitation in Chapter 84.55 RCW. Should Proposition No. 1 be approved or rejected?

**Explanatory Statement:**

Pierce County Fire District 13 is placing a lid lift proposition on the August ballot. This proposition would restore the property tax levy rate to \$1.00 per \$1,000 of assessed valuation for 2009. The proposition is presented to allow voters to override the limitation imposed by Initiative 747, which would otherwise limit total property tax revenue to 101% of the previous year's revenue, regardless of the authorized dollar rate limitation of \$1.00, which voters previously approved.

This proposition may be referred to as a "permanent" lid lift, which means that the 2009 levy dollar amount will be used for computing the limitations for subsequent levies.

This proposition meets the requirement of Initiative 747, that any revenue increase greater than 1%, over the previous year, be approved by the voters.

Approval of this proposition would allow maintaining the current level of services. Rejection of this proposition would lead to the loss of nearly \$224,532 annually in projected tax revenues seriously impacting the infrastructure of Pierce County Fire District 13.

**For Statement:**

**Vote Yes to maintain Pierce County Fire District 13**

This proposition restores the property tax levy rate to the previously authorized rate of \$1 per \$1,000 of assessed valuation. The Browns Point/Dash Point fire department currently receives \$0.52 per \$1,000 of the amount it is entitled. At that rate, there will not be enough money at the present tax base to repair and replace critical items over the next few years. That means no available funds to replace vital, life-saving equipment, or money to maintain fire stations and repair fire engines.

Pierce County Fire District 13, serving the Browns Point and Dash Point is committed to providing quality fire protection and emergency medical services. However, it can only provide the level of service you support. This is a lid lift, not a new tax. Your **Yes** vote will allow the same quick, reliable, and effective level of service you count on to continue.

*Committee Members: Kerri O'Farrell and Bob Pavolka*

**Rebuttal of Against Statement:**

Fire Department Chiefs and Commissioners are eager to answer your questions. They want to explain the needs. Your 'no' vote in effect means you do not support purchasing or upgrading necessary equipment to save lives and homes in our community.

The only *agenda* for our Fire Department is: Quick response and high quality care in an emergency for the residents of Browns Point/Dash Point.

**To continue to do that... Vote Yes on Proposition One.**

*Committee Members: Kerri O'Farrell and Bob Pavolka*

**Against Statement:**

**The most destructive force in the universe is gossip.**

Is your judgment influenced by gossip or do you intellectually seek the truth?

Don't rely on oral verbiage from the fire district and those neighbors who are promoting the passage of this lid lift. They have their own agenda. Ask hard questions and **demand** written answers before you vote.

**Demand accountability!!!!**

How will they spend these additional funds? **Can you afford to write them a blank check?**

This lid lift will create a new and higher dollar amount to tax us on. It's a **permanent** lid lift against the **assessed valuation** of your property. How much has your assessment increased in the last eight years?

If the fire district won't give us a **satisfactory** written and detailed list on how they will spend this on-going yearly increase, then, without further consideration,

**Vote No on Proposition One.**

*Committee Members: Chris Johnson and Connie O'Neill*

**Rebuttal of For Statement:**

**Do they think we're stupid?**

Of course, it's a new tax **and** a horrendous increase. Not only is it a higher tax rate, but it will be against our higher assessed property valuation. Furthermore, the tax burden will increase every year.

Why is Administration over 50% of the District's budget? How do they spend **our** money? Where's the accountability?

We will post documents on the public bulletin boards at the Town Center. Watch for them.

*Committee Members: Chris Johnson and Connie O'Neill*

# Pierce County Fire Protection District No. 15 (South Pierce Fire and Rescue) Merger of Pierce County Fire Protection Districts

## Ballot Title:

The Board of Fire Commissioners of Pierce County Fire Protection District No. 15 (“District 15”) adopted Resolution No. 08-012 concerning a merger with Pierce County Fire Protection District No. 17 (“District 17”). If approved, Proposition No. 1 would result in a merger of District 15 into District 17, thereby creating one fire protection district under the name of Pierce County Fire Protection District 17. Should Proposition No. 1 be approved or rejected?

## Explanatory Statement:

The Board of Fire Commissioners of Fire Protection District No.15 has passed a resolution petitioning to merge that fire district into Pierce County Fire Protection District No. 17. For approximately 13 months, fire protection and emergency medical services have been provided to the residents of District No. 15 under a contract providing for consolidation with Pierce County Fire Protection District No. 17, and both districts have shared a common Fire Chief.

The regionalization of fire protection and emergency medical services can improve operations through more efficient delivery of service. It can eliminate duplication of services or redundancy. The consolidation has been successful. Therefore the Board of Fire Commissioners of District No. 17 has accepted the petition to merge and both Boards have requested this election. If a majority of the registered voters of District No. 15 vote for merger, then the merger will be effective upon certification of the election results. Approval of merger will not change the delivery of services, which have been unified already under the consolidation agreement. If merger is approved, District No. 15 will be dissolved and its assets transferred to District No. 17.

## For Statement:

Firefighters, EMTs and local leaders urge you to Vote Yes to merge Fire District #15 into Pierce County Fire District #17.

District #15 and PCFD #17 already work together to provide emergency services for our community. The merger completes the process begun a year ago, and will ensure that you continue to receive the highest quality emergency services, rapid response times and 24/7 staffing by highly trained firefighters and EMTs more efficiently and cost effectively over the long term.

*The merger will not increase your tax rate and you will continue to receive the same high quality emergency services you have now.*

911 calls have increased, and modern firefighting requires more lifesaving equipment, supplies and training. Working together, we can provide the best fire and emergency services, faster response times, better trained firefighters available 24/7 more efficiently and cost effectively.

Please Vote Yes on Prop 1.

**Committee Members:** Gerry Garrison, Doreen Little and Tim Verzal

## Against Statement:

No statement was submitted against this issue.

# Pierce County Fire Protection District No. 21 (Graham Fire & Rescue) General Obligation Bonds - \$12,000,000

## Ballot Title:

The Board of Fire Commissioners of Pierce County Fire Protection District No. 21 (Graham Fire & Rescue) adopted Resolution 696 concerning financing fire station and fire fighting and lifesaving equipment. This proposition authorizes the District to acquire, construct and equip two new fire stations; make related capital improvements; and retire an outstanding debt issued for prior fire station costs. The District would issue no more than \$12,000,000 of general obligation bonds maturing within a maximum term of 12 years to finance such improvements, and to levy property taxes annually in excess of regular property tax levies to pay and retire such bonds, as provided in Resolution 696. Should Proposition No. 1 be approved or rejected?

## Explanatory Statement:

The Fire Commissioners of Fire Protection District No. 21 have adopted Resolution No. 696 authorizing the issuance of general obligation bonds to acquire land, construct and equip two new fire stations, remodel an existing fire station, and retire a \$2.8 million debt for the construction of the new headquarters fire station built in 2006. The Board of Fire Commissioners requests the District's registered voters authorize issuing no more than \$12 million of general obligation bonds, maturing within 12 years, to pay for such improvements, and levy annual excess property taxes to pay and retire the bonds. The levy rate is estimated to be 20 cents per thousand of assessed valuation, costing the typical homeowner (\$250,000 home) \$50.00 per year or \$4.17 per month.

Exemptions may apply for homeowners age 61 years or older, the disabled, and those who meet income requirements set by state law.

## For Statement:

### Area Growth Continues – More 911 Calls for Help

Graham Fire & Rescue protects more than 70,000 citizens; North-160<sup>th</sup> St., South-330<sup>th</sup> St., West-Mountain Highway and East-Orting Ridge, over a 90 Sq. Mi. area. Many times our Fire District is left with no ambulances, due to simultaneous calls. In the past your leaders in the Fire District have attempted to build fire stations out of the annual operating budget. Unprecedented building growth in the area makes that approach no longer feasible. New families are moving into the area and the increased 911 calls for help demand more response locations (fire stations) now. Just because you live close to a fire station does not mean anyone is in the station to respond. They may be responding to areas of the Fire District that lack fire stations. **Vote yes to place fire fighters and paramedics closer to your home, and make a difference when a medical emergency or fire occurs.**

**Committee Members:** Larry Hawkins, Carol Wright and Tom Faubion

## Against Statement:

No statement was submitted against this issue.

## Pierce County Fire Protection District No. 23 Authorizing Emergency Medical Services Property Tax Levy

### Ballot Title:

The Board of Fire Commissioners of Pierce County Fire Protection District No. 23 passed Resolution No. 08-002 proposing to authorize the imposition of an Emergency Medical Services property tax levy. If passed, Proposition No. 1 would permit the District to levy for collection commencing in 2009 the regular property tax at the rate of \$.50 per \$1,000 of assessed valuation for each of six (6) consecutive years for emergency medical services. Shall Proposition No. 1 be approved?

### Explanatory Statement:

The Board of Fire Commissioners of Fire Protection District No. 23 has passed a resolution requesting an election to authorize a levy of a property tax in an amount not to exceed fifty cents per \$1,000.00 of assessed valuation, each year for six (6) consecutive years. This particular property tax levy would only be for the provision of emergency medical services. The funds raised would be used for personnel, training, equipment, supplies, vehicles and other facilities needed for emergency medical services. The funds would also be used to obtain medical supplies and appliances to equip such vehicles and facilities. This EMS levy would be in addition to the regular levy for maintenance and operation costs, and the funds raised by such levy can only be used for the provision of emergency medical care and emergency medical services.

### For Statement:

The Commissioners for Pierce County Fire District #23 are introducing on the primary election ballot an Emergency Medical Services (EMS) Levy. If approved, the six-year property tax levy of \$0.50 per \$1,000 assessed valuation will augment the cost of emergency medical care and services. The funds raised by this levy shall be used by the District #23 Fire Department for the provision of emergency medical services, including related personnel costs, training for such personnel and related equipment, along with supplies needed for such services.

EMS Levies are valid for only 6 years – and must be re-approved by the voters **or the funding is eliminated**. Our last EMS levy expired in 2003, and had not been reinstated.

The citizens of Fire District #23 have a very important decision to make regarding the future of the emergency medical system that serves you.

Please help us to help you!

**Committee Member:** *Trish Stanfield*

### Against Statement:

No statement was submitted against this issue.

# Registering to Vote

## Registration Qualifications

To register to vote in Pierce County, you must be:

- A citizen of the United States;
- At least 18 years of age by the date of the next election;
- A resident of Pierce County;
- Not presently denied your civil rights as a result of a felony conviction.



## Registration Locations

You may register to vote online at [vote.wa.gov](http://vote.wa.gov) or obtain registration forms at:

- Pierce County Auditor's Office;
- City and town clerks' offices;
- Public schools;
- State offices;
- Public libraries;
- City of Tacoma fire stations;
- Staffed fire stations in unincorporated Pierce County.

If you are not currently registered, in order for you to vote, your mail-in registration form must be postmarked 30 days before an upcoming election.

However, if you are a new registrant in Washington State, you may register to vote in person at the Auditor's Office no less than 15 days prior to the election. You will be required to vote by absentee ballot for that election only.

## Motor Voter Registration

At the time you acquire or renew your Washington State driver's license, you will have the opportunity to register to vote.

## After You Have Registered

About three weeks after registering, you will be mailed a voter registration card which shows your polling place, congressional and legislative districts. Your districts will be assigned based on the geographical location of your residential address. You will only be allowed to vote for candidates and measures that apply to your districts.

## I've Moved

### Q. I've moved from one address in Pierce County to another address in Pierce County. How do I update my voter registration?

A. You can either fill out a new voter registration form, which will update all of your information including signature, or you can call us at 253-798-VOTE to update your address over the phone. This must be done at least 30 days before an election to be able to vote at your new address.

### Q. I've moved to Pierce County from a different county within Washington State. How do I update my voter registration?

A. You need to fill out a new voter registration form to become registered in Pierce County. When you fill out the new form, be sure to complete the "previously registered" box listing your former address and county. You need to do this at least 30 days before the election in order to vote in Pierce County. Otherwise, you'll need to call your previous county Elections Division and request a ballot be sent to you.

## I'm a College Student

### Q. What address should I use to register to vote?

A. You can use either your hometown address, or your college address where you are living now. The choice is up to you and depends on where you choose to claim residency.

### Q. How do I decide which address to use?

A. The address you choose depends on where you consider yourself a resident. Many students choose to establish residency in their college town to help lower the cost of tuition. Others choose to keep their residency in their hometown where they intend to return after graduation.

### Q. If I keep my registration in my hometown, how do I vote while I'm away at college?

A. Call the office which handles voter registration and elections in your hometown and tell them you want an absentee ballot. Ask if they can send you a ballot for all future elections so that you never miss an opportunity to have your voice heard.

### Q. I've heard of something called a Provisional Ballot, or Special Ballot; is it possible to vote one of those?

A. You can. To do that, come to the Auditor's Office on Election Day. Please be aware that the laws regarding Provisional ballots vary from state to state. We cannot guarantee your provisional ballot will be counted in your hometown.

### Q. Can I vote by Email?

A. Not in Washington, however, some elections offices do provide for an e-ballot option. Again, ask your hometown elections office and find out what their rules are.

# I'm in the Military

## Q. Who is included in the term "Military"?

A. Any active duty, or activated reserve military personnel and their families. The information on this page applies to the military member and his or her family members.

## Q. What address should military families use to register to vote?

A. You should register to vote in whatever state you consider as your home state of record.

## Q. We just moved to Washington and want to vote here, but the election is tomorrow. What can we do?

A. Because you are in the military, you have the benefit of being able to register to vote any time up to, and including, Election Day. Come to our office and we will register you and issue you a ballot.

## Q. I'm registered in Pierce County, but am deployed and may not receive my regular ballot on time. What can I do?

A. Email our office, or have someone call on your behalf. If you have access to a computer while on deployment we can email you a ballot in time for you to print it, vote it, sign the oath, and mail it back in time for it to count. As long as the ballot is received by the day before we certify (up to 21 days **after** the election in some cases) your ballot **will** be counted.

## Q. I want my ballot to count, but because I'm deployed, the postmark on my ballot may be after Election Day. What can I do?

A. Don't worry. With military ballots, your ballot will be counted provided you sign and date on or before Election Day.

## Q. I don't know if I will have access to a computer in the field.

A. In addition to an email ballot, we will send you a regular ballot. Ballots to APO and FPO addresses go out long before our regular ballots to allow for longer mailing times. Go ahead and vote and return both your email ballot and your paper ballot. Only one ballot will be counted.



[www.fvap.com](http://www.fvap.com)

If you are deployed you can receive a Federal Post Card Application Form from your Unit Leader or Voting Officer. This form is a valid voter registration form for any state in the country. Additionally, you can receive a Federal Ballot from your Unit Leader.

Federal ballots only include Federal races, but you may write in votes for other offices. Federal Ballots will be counted as a regular ballot for the election, provided it is signed by Election Day and received by certification.

# Absentee Ballot

## Absentee ballots can be requested:

- **By Phone** - (253) 798-VOTE or 1-800-446-4979;
- **In Person** - Pierce County Elections Center at: 2501 S. 35th Street, Suite C, in Tacoma
- **Online** - piercecountywa.org/elections
- **By Mail** - Complete and return the form below

Registered absentee voters will receive their ballots in the mail approximately 15 days before an election. Once the ballot is voted, it may be returned (postmarked no later than Election Day) in any of the following ways:

- Mailing it to the Pierce County Elections Center;
- Taking it to a Vote By Mail Express Booth;
- Taking it to the Pierce County Elections Center;
- Taking it to a Pierce County polling place.

**If you are already a permanent (ongoing) absentee voter, you do not need to fill out a new request form.** If you currently vote at the polls and would like to vote by absentee ballot for this election only, you may fill out the form below or contact the Pierce County Auditor's Office as early as 45 days prior to the election. An absentee ballots can't be issued on Election Day (except to hospitalized voters).

PIERCE COUNTY ABSENTEE BALLOT REQUEST FORM		
<input type="checkbox"/> ONGOING	<input type="checkbox"/> PRIMARY ONLY <input type="checkbox"/> GENERAL ONLY	Send to: Pierce County Auditor 2501 S 35th St, Suite C Tacoma, WA 98409
PRINT NAME AS REGISTERED		
PRINT ADDRESS WHERE YOU LIVE		CITY OR TOWN      ZIP CODE
DATE OF BIRTH	CONTACT PHONE NUMBER	
YEAR ROUND MAILING ADDRESS		
PRINT MAILING ADDRESS		
CITY OR TOWN	STATE	ZIP
<div style="font-size: 2em; font-weight: bold; margin-left: 10px;">X</div>		DATE
SIGNATURE OF APPLICANT		

2 1	Roy Fire Station No. 1	301 State Route 507, Roy	25 141	Waller Road Grange	2708 64th St E, Tacoma
2 2	River's Edge Assembly of God	101 Corrin Ave SW, Orting	25 142		Vote by Mail
2 3	River's Edge Assembly of God	101 Corrin Ave SW, Orting	25 143	By His Word Christian Center	10110 Aqueduct Dr E, Tacoma
2 4		Vote by Mail	25 144	By His Word Christian Center	10110 Aqueduct Dr E, Tacoma
2 5		Vote by Mail	25 145	Summit Library	5107 112th St E, Tacoma
2 6	Eatonville Multi-Purpose Center	305 Center St W, Eatonville	25 146	Summit Library	5107 112th St E, Tacoma
2 11	Thompson Elementary	303 159th St E, Tacoma	25 147	Shepherd of the Hill Church	8401 112th St E, Puyallup
2 12	Thompson Elementary	303 159th St E, Tacoma	25 148	Shepherd of the Hill Church	8401 112th St E, Puyallup
2 13	Thompson Elementary	303 159th St E, Tacoma	25 149		Vote by Mail
2 14	Thompson Elementary	303 159th St E, Tacoma	25 150	Summit Library	5107 112th St E, Tacoma
2 15	Thompson Elementary	303 159th St E, Tacoma	25 151	Summit Library	5107 112th St E, Tacoma
2 16	Faith Community Church	1014 152nd St E, Tacoma	25 152	Shepherd of the Hill Church	8401 112th St E, Puyallup
2 17	Shining Mountain Elementary	21615 38th Ave E, Spanaway	25 153	Shepherd of the Hill Church	8401 112th St E, Puyallup
2 18	Shining Mountain Elementary	21615 38th Ave E, Spanaway	25 154		Vote by Mail
2 19	Shining Mountain Elementary	21615 38th Ave E, Spanaway	25 155	Summit Library	5107 112th St E, Tacoma
2 20	Shining Mountain Elementary	21615 38th Ave E, Spanaway	25 156	Faith Community Church	1014 152nd St E, Tacoma
2 21		Vote by Mail	25 157	Faith Community Church	1014 152nd St E, Tacoma
2 22	South Hill Library	15420 Meridian E, Puyallup	25 158	Faith Community Church	1014 152nd St E, Tacoma
2 23	Holy Disciples Parish	10423 187th St E, Puyallup	25 159	Faith Community Church	1014 152nd St E, Tacoma
2 24	Graham Fire & Rescue No. 4	23014 70th Ave E, Graham	25 160	Summit Library	5107 112th St E, Tacoma
2 25	Holy Disciples Parish	10423 187th St E, Puyallup	25 161	South Hill Library	15420 Meridian E, Puyallup
2 26	Holy Disciples Parish	10423 187th St E, Puyallup	25 162	South Hill Library	15420 Meridian E, Puyallup
2 27	Shining Mountain Elementary	21615 38th Ave E, Spanaway	25 163	South Hill Library	15420 Meridian E, Puyallup
2 28	Shining Mountain Elementary	21615 38th Ave E, Spanaway	25 164	South Hill Library	15420 Meridian E, Puyallup
2 29		Vote by Mail	25 165		Vote by Mail
2 30	Rocky Ridge Elementary	6514 260th St E, Graham	25 166	Holy Disciples Parish	10423 187th St E, Puyallup
2 31	Shining Mountain Elementary	21615 38th Ave E, Spanaway	25 167	South Hill Fire Station No. 69	17210 110th Ave E, Puyallup
2 32	Graham Fire & Rescue No. 4	23014 70th Ave E, Graham	25 168	South Hill Fire Station No. 69	17210 110th Ave E, Puyallup
2 33	Graham Fire & Rescue No. 4	23014 70th Ave E, Graham	25 169	South Hill Fire Station No. 69	17210 110th Ave E, Puyallup
2 34	Rocky Ridge Elementary	6514 260th St E, Graham	25 170	South Hill Fire Station No. 69	17210 110th Ave E, Puyallup
2 35	Graham Fire & Rescue No. 4	23014 70th Ave E, Graham	25 171	South Hill Fire Station No. 69	17210 110th Ave E, Puyallup
2 36	Roy Fire Station No. 1	301 State Route 507, Roy	25 172	Sunrise Baptist Church	12115 Shaw Rd E, Puyallup
2 37	Lacamas Community Club	32113 8th Ave S, Roy	25 173	Sunrise Baptist Church	12115 Shaw Rd E, Puyallup
2 38	Rocky Ridge Elementary	6514 260th St E, Graham	25 174	Sunrise Baptist Church	12115 Shaw Rd E, Puyallup
2 39	Rocky Ridge Elementary	6514 260th St E, Graham	25 175		Vote by Mail
2 40	Roy Fire Station No. 1	301 State Route 507, Roy	25 176		Vote by Mail
2 41	Lacamas Community Club	32113 8th Ave S, Roy	25 177		Vote by Mail
2 42	Lacamas Community Club	32113 8th Ave S, Roy	25 178		Vote by Mail
2 43	Eatonville Multi-Purpose Center	305 Center St W, Eatonville	25 179		Vote by Mail
2 44	Holy Disciples Parish	10423 187th St E, Puyallup	25 180	Puyallup Library	324 Meridian St S, Puyallup
2 45	Holy Disciples Parish	10423 187th St E, Puyallup	25 181		Vote by Mail
2 46	River's Edge Assembly of God	101 Corrin Ave SW, Orting	26 201	Agnus Dei Lutheran Church	10511 Peacock Hill Ave NW, Gig Harbor
2 47	River's Edge Assembly of God	101 Corrin Ave SW, Orting	26 202	Harbor Heights Assembly of God	4417 56th St NW, Gig Harbor
2 48	Graham Fire & Rescue No. 4	23014 70th Ave E, Graham	26 211	Key Center Fire Station	8911 Key Peninsula Hwy KPN, Lakebay
2 49	River's Edge Assembly of God	101 Corrin Ave SW, Orting	26 212	Key Center Fire Station	8911 Key Peninsula Hwy KPN, Lakebay
2 50	Graham Fire & Rescue No. 4	23014 70th Ave E, Graham	26 213	Key Center Fire Station	8911 Key Peninsula Hwy KPN, Lakebay
2 51		Vote by Mail	26 214	Evergreen Elementary	1820 Key Peninsula Hwy KPS, Lakebay
2 52	Rocky Ridge Elementary	6514 260th St E, Graham	26 215		Vote by Mail
2 53	Eatonville Multi-Purpose Center	305 Center St W, Eatonville	26 216	Agnus Dei Lutheran Church	10511 Peacock Hill Ave NW, Gig Harbor
2 54	Eatonville Multi-Purpose Center	305 Center St W, Eatonville	26 217	Agnus Dei Lutheran Church	10511 Peacock Hill Ave NW, Gig Harbor
2 55		Vote by Mail	26 218	Agnus Dei Lutheran Church	10511 Peacock Hill Ave NW, Gig Harbor
2 56		Vote by Mail	26 219	Agnus Dei Lutheran Church	10511 Peacock Hill Ave NW, Gig Harbor
2 57		Vote by Mail	26 220	Agnus Dei Lutheran Church	10511 Peacock Hill Ave NW, Gig Harbor
2 58		Vote by Mail	26 221	Agnus Dei Lutheran Church	10511 Peacock Hill Ave NW, Gig Harbor
2 59	South Hill Fire Station No. 69	17210 110th Ave E, Puyallup	26 222	Harbor Heights Assembly of God	4417 56th St NW, Gig Harbor
2 60	Sunrise Baptist Church	12115 Shaw Rd E, Puyallup	26 223	Harbor Heights Assembly of God	4417 56th St NW, Gig Harbor
2 61		Vote by Mail	26 224	Harbor Heights Assembly of God	4417 56th St NW, Gig Harbor
2 62	River's Edge Assembly of God	101 Corrin Ave SW, Orting	26 225	Harbor Heights Assembly of God	4417 56th St NW, Gig Harbor
2 63	South Prairie Community Center	354 State Route 162, South Prairie	26 226	Harbor Heights Assembly of God	4417 56th St NW, Gig Harbor
2 64	South Prairie Community Center	354 State Route 162, South Prairie	26 227	Fox Island United Church of Christ	726 6th Ave, Fox Island
2 65		Vote by Mail	26 228	Harbor Heights Assembly of God	4417 56th St NW, Gig Harbor
25 101	Puyallup Library	324 Meridian St S, Puyallup	26 229	Harbor Heights Assembly of God	4417 56th St NW, Gig Harbor
25 102	United Methodist Church	1919 W Pioneer Ave, Puyallup	26 230	Harbor Heights Assembly of God	4417 56th St NW, Gig Harbor
25 103	United Methodist Church	1919 W Pioneer Ave, Puyallup	27 301	Point Defiance Village	6414 N Park Way, Tacoma
25 104	Puyallup Library	324 Meridian St S, Puyallup	27 302	Skyline Presbyterian Church	6301 Westgate Blvd, Tacoma
25 105	Puyallup Library	324 Meridian St S, Puyallup	27 303	Point Defiance Village	6414 N Park Way, Tacoma
25 106	United Methodist Church	1919 W Pioneer Ave, Puyallup	27 304	First Christian Church	602 N Orchard St, Tacoma
25 107	Puyallup Library	324 Meridian St S, Puyallup	27 305	Mason United Methodist Church	2710 N Madison St, Tacoma
25 108	Puyallup Library	324 Meridian St S, Puyallup	27 306	Mason United Methodist Church	2710 N Madison St, Tacoma
25 109	Shepherd of the Hill Church	8401 112th St E, Puyallup	27 307	Mason United Methodist Church	2710 N Madison St, Tacoma
25 110	Sunrise Baptist Church	12115 Shaw Rd E, Puyallup	27 308	Mason United Methodist Church	2710 N Madison St, Tacoma
25 111	Sunrise Baptist Church	12115 Shaw Rd E, Puyallup	27 309	Immanuel Presbyterian Church	901 N J St, Tacoma
25 112	Sunrise Baptist Church	12115 Shaw Rd E, Puyallup	27 310	Immanuel Presbyterian Church	901 N J St, Tacoma
25 113		Vote by Mail	27 311	Zion Lutheran Church	3410 6th Ave, Tacoma
25 114		Vote by Mail	27 312	Zion Lutheran Church	3410 6th Ave, Tacoma
25 116	Fife Community Center	2111 54th Ave E, Fife	27 313	Immanuel Presbyterian Church	901 N J St, Tacoma
25 117	Fife Community Center	2111 54th Ave E, Fife	27 314	Immanuel Presbyterian Church	901 N J St, Tacoma
25 118	Fife Community Center	2111 54th Ave E, Fife	27 315	Immanuel Presbyterian Church	901 N J St, Tacoma
25 119		Vote by Mail	27 316	Immanuel Presbyterian Church	901 N J St, Tacoma
25 121	Milton City Hall	1000 Laurel St, Milton	27 317	First Christian Church	602 N Orchard St, Tacoma
25 122	Milton City Hall	1000 Laurel St, Milton	27 318	First Christian Church	602 N Orchard St, Tacoma
25 123	Milton City Hall	1000 Laurel St, Milton	27 319	Zion Lutheran Church	3410 6th Ave, Tacoma
25 124		Vote by Mail	27 320	Zion Lutheran Church	3410 6th Ave, Tacoma
25 127		Vote by Mail	27 321	Gloria Dei Lutheran Church	3315 S 19th St, Tacoma
25 128		Vote by Mail	27 322	Gloria Dei Lutheran Church	3315 S 19th St, Tacoma
25 129		Vote by Mail	27 323	Gloria Dei Lutheran Church	3315 S 19th St, Tacoma
25 130		Vote by Mail	27 324	Gloria Dei Lutheran Church	3315 S 19th St, Tacoma
25 131	Edgewood Fire Station	10105 24th St E, Edgewood	27 325	Gloria Dei Lutheran Church	3315 S 19th St, Tacoma
25 132	Edgewood Fire Station	10105 24th St E, Edgewood	27 326		Vote by Mail
25 135		Vote by Mail	27 327	Immanuel Presbyterian Church	901 N J St, Tacoma
25 136		Vote by Mail	27 328		Vote by Mail
25 137	United Methodist Church	1919 W Pioneer Ave, Puyallup	27 329	Centre at Norpoint	4818 Nassau Ave NE, Tacoma
25 138	Waller Road Grange	2708 64th St E, Tacoma	27 330		Vote by Mail
25 139	Waller Road Grange	2708 64th St E, Tacoma	27 331		Vote by Mail
25 140	Summit Library	5107 112th St E, Tacoma	27 332	Centre at Norpoint	4818 Nassau Ave NE, Tacoma

27 333	Centre at Norpoint	4818 Nassau Ave NE, Tacoma	29 530	Praise Covenant Church	3501 S Orchard St, Tacoma
27 334	Centre at Norpoint	4818 Nassau Ave NE, Tacoma	29 531		Vote by Mail
27 335	Centre at Norpoint	4818 Nassau Ave NE, Tacoma	29 532	Dower Elementary	7817 John Dower Rd W, Lakewood
27 336	Centre at Norpoint	4818 Nassau Ave NE, Tacoma	29 533	Hope Lutheran Church	7209 S Puget Sound Ave, Tacoma
27 337	Bethlehem Lutheran Church	101 E 38th St, Tacoma	29 534	Dower Elementary	7817 John Dower Rd W, Lakewood
27 338	Bethlehem Lutheran Church	101 E 38th St, Tacoma	29 535	Dower Elementary	7817 John Dower Rd W, Lakewood
27 339	Bethlehem Lutheran Church	101 E 38th St, Tacoma	29 536	Dower Elementary	7817 John Dower Rd W, Lakewood
27 340	Bethlehem Lutheran Church	101 E 38th St, Tacoma	29 537	Tillicum/Amer. Lk Gardens	14916 Washington Ave SW, Lakewood
27 341	Bethlehem Lutheran Church	101 E 38th St, Tacoma	29 538		Vote by Mail
27 342	Waller Road Grange	2708 64th St E, Tacoma	29 545		Vote by Mail
27 343		Vote by Mail	29 546		Vote by Mail
27 344	Waller Road Grange	2708 64th St E, Tacoma	29 547		Vote by Mail
27 345	Waller Road Grange	2708 64th St E, Tacoma	29 548		Vote by Mail
27 346		Vote by Mail	29 549	Lakeview Church Of Christ	1709 112th St S, Tacoma
27 351	Point Defiance Village	6414 N Park Way, Tacoma	29 550	By His Word Christian Center	10110 Aqueduct Dr E, Tacoma
27 352		Vote by Mail	29 551		Vote by Mail
27 353		Vote by Mail	29 552		Vote by Mail
27 354		Vote by Mail	29 553	By His Word Christian Center	10110 Aqueduct Dr E, Tacoma
27 356	Centre at Norpoint	4818 Nassau Ave NE, Tacoma	29 554	Lakeview Church Of Christ	1709 112th St S, Tacoma
27 357	Milton City Hall	1000 Laurel St, Milton	29 555	Lakeview Church Of Christ	1709 112th St S, Tacoma
27 358		Vote by Mail	29 556	Lakeview Church Of Christ	1709 112th St S, Tacoma
27 359		Vote by Mail	29 557		Vote by Mail
27 360		Vote by Mail	29 558	Lakeview Church Of Christ	1709 112th St S, Tacoma
28 401	Skyline Presbyterian Church	6301 Westgate Blvd, Tacoma	29 559	Lakeview Church Of Christ	1709 112th St S, Tacoma
28 402	Skyline Presbyterian Church	6301 Westgate Blvd, Tacoma	29 560	Lakeview Church Of Christ	1709 112th St S, Tacoma
28 403	Skyline Presbyterian Church	6301 Westgate Blvd, Tacoma	29 561		Vote by Mail
28 404	First Christian Church	602 N Orchard St, Tacoma	29 562		Vote by Mail
28 405	United Church in University Place	3912 Grandview Dr W, University Place	29 563	Thompson Elementary	303 159th St E, Tacoma
28 411	Praise Covenant Church	3501 S Orchard St, Tacoma	29 564	Thompson Elementary	303 159th St E, Tacoma
28 412	Praise Covenant Church	3501 S Orchard St, Tacoma	29 565	Thompson Elementary	303 159th St E, Tacoma
28 413	Praise Covenant Church	3501 S Orchard St, Tacoma	29 566		Vote by Mail
28 416	United Church in University Place	3912 Grandview Dr W, University Place	31 601	Milton City Hall	1000 Laurel St, Milton
28 417	United Church in University Place	3912 Grandview Dr W, University Place	31 602	Edgewood Fire Station	10105 24th St E, Edgewood
28 418	United Church in University Place	3912 Grandview Dr W, University Place	31 603	Edgewood Fire Station	10105 24th St E, Edgewood
28 419	United Church in University Place	3912 Grandview Dr W, University Place	31 604	Edgewood Fire Station	10105 24th St E, Edgewood
28 420	United Church in University Place	3912 Grandview Dr W, University Place	31 608		Vote by Mail
28 421	Olympic View Baptist Church	4707 Elwood Dr W, University Place	31 611		Vote by Mail
28 422	Olympic View Baptist Church	4707 Elwood Dr W, University Place	31 612		Vote by Mail
28 423	Olympic View Baptist Church	4707 Elwood Dr W, University Place	31 613		Vote by Mail
28 424	Olympic View Baptist Church	4707 Elwood Dr W, University Place	31 614	Sumner Presbyterian Church	1915 Washington St, Sumner
28 425		Vote by Mail	31 615	Sumner Presbyterian Church	1915 Washington St, Sumner
28 426		Vote by Mail	31 616	Sumner Presbyterian Church	1915 Washington St, Sumner
28 430	Hudtloff Middle School	7702 Phillips Rd SW, Lakewood	31 617		Vote by Mail
28 431	Dower Elementary	7817 John Dower Rd W, Lakewood	31 618		Vote by Mail
28 432	Hudtloff Middle School	7702 Phillips Rd SW, Lakewood	31 619	Dieringer School District Office	1320 178th Ave E, Lake Tapps
28 433	Hudtloff Middle School	7702 Phillips Rd SW, Lakewood	31 621	Lakeridge Middle School	5909 Myers Rd E, Lake Tapps
28 434	Lakewood Presbyterian Church	8601 104th St SW, Lakewood	31 622	Bonney Lake Elementary	18715 80th St E, Bonney Lake
28 435	Lakewood Presbyterian Church	8601 104th St SW, Lakewood	31 623	Bonney Lake Elementary	18715 80th St E, Bonney Lake
28 436	Lakewood Presbyterian Church	8601 104th St SW, Lakewood	31 624	Bonney Lake Elementary	18715 80th St E, Bonney Lake
28 437	Dower Elementary	7817 John Dower Rd W, Lakewood	31 625	Lakeridge Middle School	5909 Myers Rd E, Lake Tapps
28 438	Lake City Community Church	8810 Lawndale Ave SW, Lakewood	31 627	Buckley Community Hall	127 N River Ave, Buckley
28 439	Lake City Community Church	8810 Lawndale Ave SW, Lakewood	31 628	Buckley Community Hall	127 N River Ave, Buckley
28 440		Vote by Mail	31 629	South Prairie Community Center	354 State Route 162, South Prairie
28 441		Vote by Mail	31 630		Vote by Mail
28 442		Vote by Mail	31 631		Vote by Mail
28 443	Lake City Community Church	8810 Lawndale Ave SW, Lakewood	31 636		Vote by Mail
28 444	Tillicum/Amer. Lk Gardens	14916 Washington Ave SW, Lakewood	31 638	Dieringer School District Office	1320 178th Ave E, Lake Tapps
28 451	Stellacoom Public Safety Bldg	601 Main St, Stellacoom	31 639	Dieringer School District Office	1320 178th Ave E, Lake Tapps
28 452	Stellacoom Public Safety Bldg	601 Main St, Stellacoom	31 640	Lakeridge Middle School	5909 Myers Rd E, Lake Tapps
28 453	Stellacoom Public Safety Bldg	601 Main St, Stellacoom	31 641	Lakeridge Middle School	5909 Myers Rd E, Lake Tapps
28 457		Vote by Mail	31 642	Lakeridge Middle School	5909 Myers Rd E, Lake Tapps
28 458	Chloe Clark Elementary	1700 Palisade Blvd, DuPont	31 643		Vote by Mail
28 460		Vote by Mail	31 644	Sumner Presbyterian Church	1915 Washington St, Sumner
28 461		Vote by Mail	31 645	Sumner Presbyterian Church	1915 Washington St, Sumner
28 462		Vote by Mail	31 646	Sumner Presbyterian Church	1915 Washington St, Sumner
28 463		Vote by Mail	31 647		Vote by Mail
28 464	Stellacoom Public Safety Bldg	601 Main St, Stellacoom	31 648		Vote by Mail
28 465	Chloe Clark Elementary	1700 Palisade Blvd, DuPont	31 649		Vote by Mail
28 467	Tillicum/Amer. Lk Gardens	14916 Washington Ave SW, Lakewood	31 650	Dieringer School District Office	1320 178th Ave E, Lake Tapps
28 469	Tillicum/Amer. Lk Gardens	14916 Washington Ave SW, Lakewood	31 651	Dieringer School District Office	1320 178th Ave E, Lake Tapps
28 470		Vote by Mail	31 652	Dieringer School District Office	1320 178th Ave E, Lake Tapps
29 500		Vote by Mail	31 653	Bonney Lake Elementary	18715 80th St E, Bonney Lake
29 501	Praise Covenant Church	3501 S Orchard St, Tacoma	31 654		Vote by Mail
29 502	Hope Lutheran Church	7209 S Puget Sound Ave, Tacoma	31 655	Buckley Community Hall	127 N River Ave, Buckley
29 503	Jennie Reed Elementary	1802 S 36th St, Tacoma	31 656	Bonney Lake Elementary	18715 80th St E, Bonney Lake
29 504	Jennie Reed Elementary	1802 S 36th St, Tacoma	31 657	Buckley Community Hall	127 N River Ave, Buckley
29 505	Bethlehem Lutheran Church	101 E 38th St, Tacoma	31 658	South Prairie Community Center	354 State Route 162, South Prairie
29 506	Jennie Reed Elementary	1802 S 36th St, Tacoma	31 659	South Prairie Community Center	354 State Route 162, South Prairie
29 507	Calvary Baptist Church	6511 S C St, Tacoma	31 660	South Prairie Community Center	354 State Route 162, South Prairie
29 508		Vote by Mail	31 661	Buckley Community Hall	127 N River Ave, Buckley
29 509	Praise Covenant Church	3501 S Orchard St, Tacoma	31 662	South Prairie Community Center	354 State Route 162, South Prairie
29 510	Hope Lutheran Church	7209 S Puget Sound Ave, Tacoma	31 663	South Prairie Community Center	354 State Route 162, South Prairie
29 511	Calvary Baptist Church	6511 S C St, Tacoma	31 664	South Prairie Community Center	354 State Route 162, South Prairie
29 512	Calvary Baptist Church	6511 S C St, Tacoma	31 665	Buckley Community Hall	127 N River Ave, Buckley
29 513	Calvary Baptist Church	6511 S C St, Tacoma	31 666	South Prairie Community Center	354 State Route 162, South Prairie
29 514		Vote by Mail	31 667	Buckley Community Hall	127 N River Ave, Buckley
29 515	Hope Lutheran Church	7209 S Puget Sound Ave, Tacoma	31 668		Vote by Mail
29 516	Hope Lutheran Church	7209 S Puget Sound Ave, Tacoma	31 669		Vote by Mail
29 517	Baker Middle School	8320 S I St, Tacoma	31 670		Vote by Mail
29 518	Calvary Baptist Church	6511 S C St, Tacoma	31 671		Vote by Mail
29 519	Baker Middle School	8320 S I St, Tacoma	31 672		Vote by Mail
29 520	Baker Middle School	8320 S I St, Tacoma	31 673		Vote by Mail
29 521	Baker Middle School	8320 S I St, Tacoma			
29 522	By His Word Christian Center	10110 Aqueduct Dr E, Tacoma			
29 523		Vote by Mail			

# Ranked Choice Voting

## What is Ranked Choice Voting?

In November of 2006, the voters of Pierce County approved Charter Amendment No. 3 which provides that the election of all county officials, except judges and the Prosecuting Attorney be conducted using Instant Runoff Voting now referred to as Ranked Choice Voting.

All qualifying candidates will appear directly on the general election ballot. Ranked choice voting allows Pierce County voters to rank a first, second and third choice candidate for each office. For the Ranked Choice Voting races no primary will be held. (Pierce County Charter 4.15)

## Who is elected in 2008 using Ranked Choice Voting?

Pierce County will use Ranked Choice Voting to elect the following Pierce County officials in the General Election: Executive, Assessor-Treasurer, Sheriff and Council Districts (Positions 2, 3, 4, and 6)

## Who will run under a party label using Ranked Choice Voting in 2008?

For partisan Ranked Choice Voting offices, the County Central Committee of each major and minor political party determined which candidates were approved to use their party label.

## When is the first Ranked Choice Voting Election in Pierce County?

The first Ranked Choice Voting election is November 4, 2008 in conjunction with the General Election.

For more information, visit our website: [www.piercecountywa.org/rcv](http://www.piercecountywa.org/rcv)



# Voting is Cool



The Pierce County Auditor's Office is pleased to announce our bi-annual Voting is Cool Education Program. This program emphasizes the importance of voting in our society while giving students in kindergarten through sixth grade the opportunity to learn about and experience the voting process.

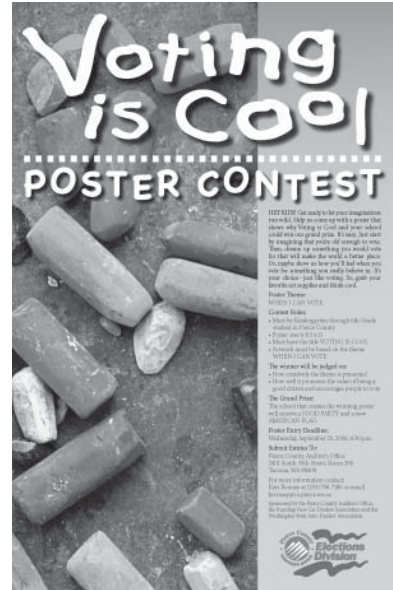
In conjunction with the Voting is Cool Education Program we will have our bi-annual Voting is Cool Poster Contest. This contest

is provided through a public-private partnership with sponsorship by the New Puyallup Car Dealer's Association. The goal of the poster contest is to give students the opportunity to use their imaginations to illustrate what voting means to them.

Are you an elementary or middle school teacher? Do you want your students to participate in these fun voting programs? Go to our website at [www.piercecountywa.org/elections](http://www.piercecountywa.org/elections) to get an order form. Orders must be submitted no later than August 30, 2008. Supplies will be delivered to schools in mid-October 2008.

The week of October 27 through October 31, 2008 is to be proclaimed by the County Council as Youth Voting Awareness Week. Over the past 8 years 90,000 students across Pierce County have participated in the Educational Program or the Poster Contest or both.

Join the Voting is Cool Program today by contacting Chief Deputy Auditor Keri Rooney at 253-798-7186 or [krooney@co.pierce.wa.us](mailto:krooney@co.pierce.wa.us) for more information.



# Passport and Licensing Fair

***Need a passport? Marriage License? Pet License?***  
*Don't have time to get one on week days?*

Coming Saturday, September 20, 2008  
 8:00 a.m. – 3:00 p.m.

2401 So. 35th Street, Room 200, Tacoma  
 For more information, call 253-798-7445  
[www.piercecountywa.org/auditor](http://www.piercecountywa.org/auditor)





**August 19, 2008**  
**Primary Election**

**Residential Customer**

# PIERCE COUNTY'S OFFICIAL LOCAL VOTERS' PAMPHLET

Published by Pierce County Elections • Voter Hotline 253-798-VOTE

## HOW TO NAVIGATE THE 2008 PRIMARY



**Absentee Voters — You should receive your ballot in the mail by August 8, 2008. If you do not receive your ballot, call (253) 798-VOTE or 1-800-446-4979.**