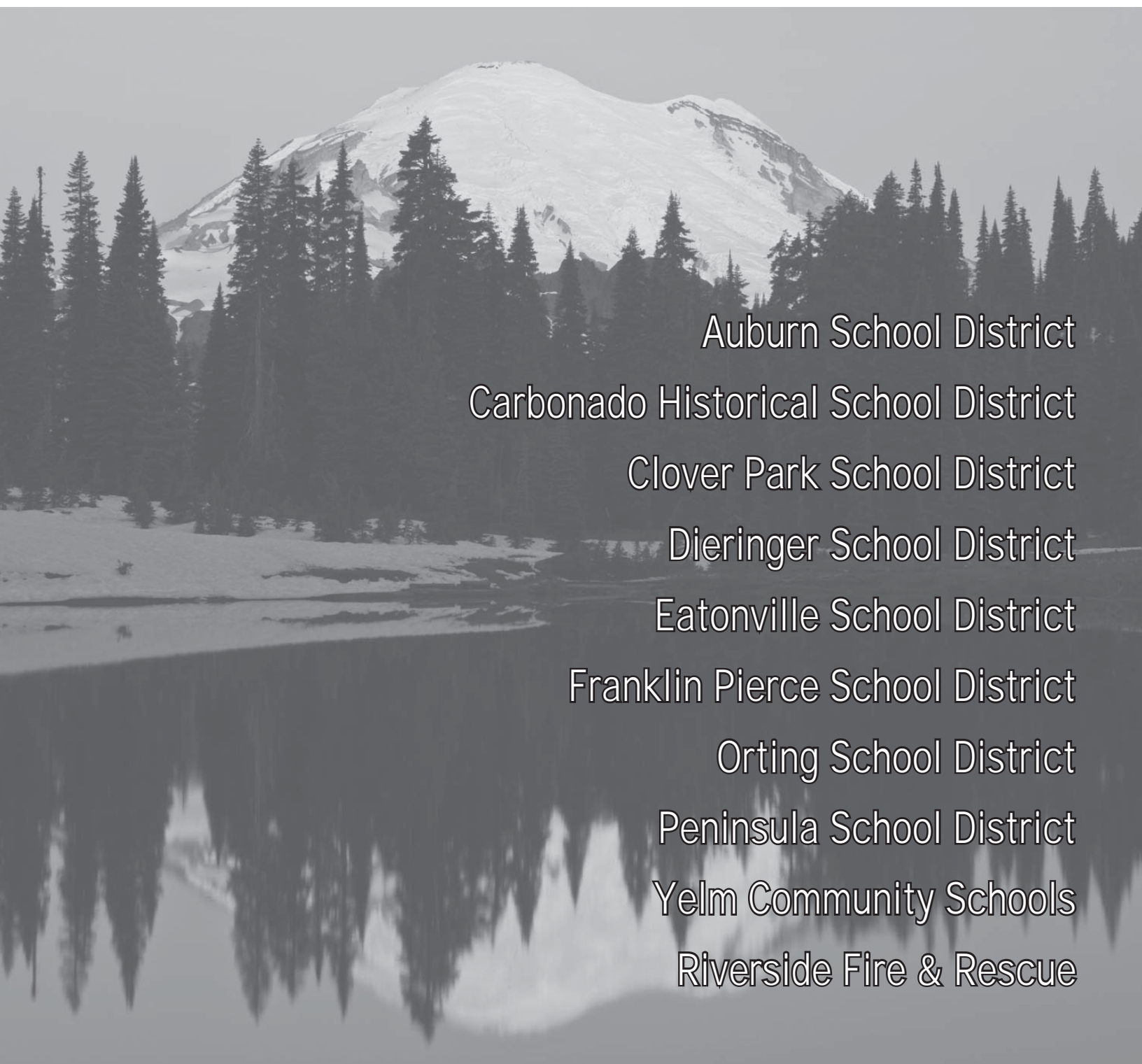


Pierce County Official Local  
**Voters' Pamphlet**  
February 14, 2012 Special Election



Auburn School District  
Carbonado Historical School District  
Clover Park School District  
Dieringer School District  
Eatonville School District  
Franklin Pierce School District  
Orting School District  
Peninsula School District  
Yelm Community Schools  
Riverside Fire & Rescue

# Message from the Auditor

Dear Voter,

I wish you a wonderful new year filled with abundance, joy, and treasured moments. May 2012 be your best year yet!

## Redistricting

By the time you receive this Voters' Pamphlet, the State Redistricting Commission will have completed their work and the State Legislature will be poised to amend and approve the new boundaries for Congressional and Legislative districts. And, we now know that Washington's new 10th Congressional District is part of Pierce County.

Further, these Pierce County jurisdictions have also altered their district boundaries:

- Pierce County Council
- City of Tacoma
- City of Puyallup

All this may lead you to wonder what candidates you will be able to vote for in 2012. And, how you will know?

We will notify every voter of their new voting districts by April 30, 2012. You'll receive a new voter registration card in the mail. And, we will automatically mail you the correct ballot, with every district that you are eligible to vote on.

All of the new district boundaries will be in place for the 2012 Primary election (August 7, 2012).

Redistricting only happens every 10 years. It's an exciting time for our community, and a challenging time for the Auditor's Office.

## Inspire Citizens

The Auditor's Office has its first-ever Strategic Plan. Our vision:

*"The Auditor's Office will reaffirm a citizen's faith in the efficiency and integrity of local government. Our workplace will be renowned for its culture of continuous improvement, camaraderie, and focus on outstanding customer service."*

The plan lays out 10 goals for the next two years. I want to hear your thoughts about one particular goal:

*"Inspire citizens to be engaged in their community and to make a personal investment in solving civic problems."*

How do YOU think the Auditor's Office can meet this challenge? Call me at 798-3188. Or, drop me a line at [Julie.Anderson@co.pierce.wa.us](mailto:Julie.Anderson@co.pierce.wa.us)



Julie Anderson  
Pierce County Auditor

# Table of Contents

This pamphlet contains school district propositions and one fire district proposition for Pierce County. Your ballot will contain only the issue that you are eligible to vote on. See page 22 for more information.

Voting Centers..... 4

Ballot Deposit Sites ..... 5

I Voted Stickers..... 5

Not registered to vote?..... 6

Sample ballot..... 7 - 9

Yelm Community Schools District No. 2..... 11

Carbonado Historical School District No. 19 ..... 12

Dieringer School District No. 343 ..... 13

Orting School District No. 344 ..... 14

Clover Park School District No. 400..... 15

Peninsula School District No. 401..... 16

Franklin Pierce School District No. 402 ..... 17

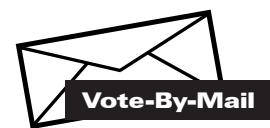
Eatonville School District No. 404 ..... 18 - 19

Auburn School District No. 408 ..... 20 - 21

What can you vote on?..... 22

Fire Protection District No. 14 (Riverside Fire & Rescue) ..... 23

## Don't wait to mail your ballot!



**Ballots will be mailed January 27, 2012.** You should receive your ballot by February 3, 2012. If you don't receive your ballot, call 253-798-VOTE (8683) or 1-800-446-4979.

Your ballot must be postmarked by February 14, 2012 to be counted. If you mail your ballot on Election Day, check the mail pick-up time to ensure it will be postmarked on time.

You can drop off your ballot or mail your ballot anytime after you have voted it.

## Published by the Pierce County Auditor's Office



[piercecountywa.org/elections](http://piercecountywa.org/elections)  
[pcelections@co.pierce.wa.us](mailto:pcelections@co.pierce.wa.us)  
 253-798-VOTE (8683) or 800-446-4979

# Voting Centers

**Open February 13th and 14th**  
**7:00 a.m. - 8:00 p.m.**

Voting Centers are an extension of our main office.  
Services include:

- Voter registration.
- Accessible voting using touch screen equipment.
- Ballot deposit site.
- Provisional ballots.
- Voting assistance from Election staff.



## The following Voting Centers are open this election:

**Clover Park Technical College**  
Rotunda - Bldg 3  
(Enter from Lakeview Ave SW)  
4500 Steilacoom Blvd SW  
Lakewood, WA 98499

**Gig Harbor Civic Center**  
3510 Grandview St  
Gig Harbor, WA 98335

**Puyallup Library**  
324 South Meridian  
Puyallup, WA 98371

**Pierce County Election Center**  
2501 S 35th St, Suite C  
Tacoma, WA 98409

- **Bring your photo identification.**
- **If you want to vote on the accessible voting equipment, don't return your ballot.**

For more information on accessible voting in Pierce County, call us or visit our website:  
[piercecountywa.org/elections](http://piercecountywa.org/elections)

## Additional assistance for voters:

**CFI** CENTER FOR INDEPENDENCE

Center for Independence  
253-582-1253 (voice)  
800-724-8172

**hscd**

Hearing, Speech &  
Deafness Center  
253-474-1748 (TTY)  
253-292-2209 (videophone)  
253-475-0782 (voice)

**TACID**  
Promoting the independence  
of individuals with disabilities

Tacoma Area Coalition of  
Individuals with Disabilities  
253-565-9000 (voice)  
253-565-3486 (TTY)

# Save a stamp

## Ballot Deposit Sites

Open January 13, 2012 through February 14, 2012.



### Parkland/Spanaway

Parkland/Spanaway Library  
13718 Pacific Ave S  
Tacoma, WA 98444

Roy Y Park and Ride  
SR 507 and Pacific Ave S  
Spanaway, WA 98387

### Puyallup

Puyallup Library  
324 South Meridian  
Puyallup, WA 98371

South Hill Library  
15420 Meridian E  
Puyallup, WA 98375

### Bonney Lake

Bonney Lake South  
Park and Ride  
184th Ave E  
Bonney Lake, WA 98391

### Gig Harbor

Gig Harbor Fire Station  
6711 Kimball Dr  
Gig Harbor, WA 98335

**NEW!**

Key Center Fire Station  
8911 Key Peninsula Hwy, KPN  
Lakebay, WA 98349

### DuPont

DuPont Ross Plaza  
1500 Wilmington Dr  
DuPont, WA 98327

Purdy Fire Station  
5210 144th St NW  
Gig Harbor, WA 98332

### Eatonville

Barney's Corner  
40512 Meridian E  
Eatonville, WA 98328

### Lakewood

Lakewood City Hall  
6000 Main St SW  
Lakewood, WA 98499

### Edgewood

Edgewood City Hall  
2224 104th Ave E  
Edgewood, WA 98372

Lakewood (SR512)  
Park and Ride  
10417 South Tacoma Way  
Lakewood, WA 98499

### Sumner

Sumner Library  
1116 Fryer Ave  
Sumner, WA 98390

### Tacoma

72nd Street Transit Center  
1319 E 72nd St  
Tacoma, WA 98404

### County-City Building

930 Tacoma Ave S  
Tacoma, WA 98402  
(Outside 2nd Floor Entrance)

### Pierce County Annex

2401 S 35th St  
Tacoma, WA 98409

**All sites close at 8:00 p.m. on February 14, 2012.**

Maps, directions, and photos are available online: [piercecountywa.org/elections](http://piercecountywa.org/elections)

# Not registered to vote?

## To register to vote in Washington, you must be:

- A citizen of the United States.
- A legal resident of Washington.
- At least 18 years old by Election Day.
- Not under the authority of the Department of Corrections.



## How to register:

- Online - [piercecountywa.org/elections](http://piercecountywa.org/elections)
- In person -  
Pierce County Elections Division  
2501 S 35th St, Suite C  
Tacoma, WA 98409
- By mail -  
Call the Elections Division at 253-798-VOTE (8683) and we will mail you a form.

## Registration Deadline:

It's not too late to register in person for the February Election.

In person deadline is **February 6, 2012**. New Washington voters only.

# Sample Ballot

## Yelm Community Schools

### Special Election - Proposition No. 1

#### Maintenance and Operations Levy

The Board of Directors of Yelm Community Schools adopted Resolution No. 03-11-12, concerning a proposition to levy property taxes. This proposition would authorize the District to meet the educational needs of its students by levying the following excess taxes, in place of an expiring levy, on all taxable property within the District, for the support of the District's educational programs, maintenance and operations expenses:

Collection Year	Approximate Levy Rate per \$1,000 of Assessed Value	Levy Amount
2013	\$3.71	\$9,300,000
2014	\$3.79	\$9,700,000
2015	\$3.83	\$10,100,000
2016	\$3.92	\$10,700,000

Should this proposition be approved:

Levy Yes ←

Levy No ←

## Carbonado Historical School District No. 19

### Special Election - Proposition No. 1

#### Educational Programs and Operations Levy

The Board of Directors of Carbonado Historical School District No. 19 adopted Resolution No. 02-11 concerning education funding. If approved, Proposition No. 1 would authorize the District to levy the following excess taxes, in place of an expiring levy, on all taxable property within the District, to support the District's educational programs and operations:

Levy Year	Collection Year	Approximate Levy Rate Per \$1,000 of Assessed Value	Levy Amount
2012	2013	\$5.51	\$522,000
2013	2014	\$5.52	\$538,000
2014	2015	\$5.52	\$554,000
2015	2016	\$5.53	\$571,000

all as provided in Resolution No. 02-11. Should Proposition No. 1 be approved?

Yes ←

No ←

## Dieringer School District No. 343

### Special Election - Proposition No. 1

#### Educational Programs and Operations Levy

The Board of Directors of Dieringer School District No. 343 adopted Resolution No. 03-11-12 concerning a proposition to finance educational programs, maintenance and operations. If approved, Proposition No. 1 would authorize the District to meet the educational needs of its students by levying the following excess taxes, in place of an expiring levy, on all taxable property within the District, for support of the District's General Fund educational programs, maintenance and operations expenses:

Levy Year	Collection Year	Approximate Levy Rate Per \$1,000 of Assessed Value	Levy Amount
2012	2013	\$4.34	\$5,450,000
2013	2014	\$4.82	\$5,750,000

all as provided in Resolution No. 03-11-12. Should Proposition No. 1 be approved?

Yes ←

No ←

## Orting School District No. 344

### Special Election - Proposition No. 1

#### Educational Programs and Operations Levy

The Board of Directors of Orting School District No. 344 adopted Resolution No. 2.11-12 concerning education funding. If approved, Proposition No. 1 would authorize the District to levy the following excess taxes, to replace an expiring levy, on all taxable property within the District, to support the District's educational maintenance and daily operations, including teachers, staff, classroom materials and textbooks:

Levy Year	Collection Year	Approximate Levy Rate Per \$1,000 of Assessed Value	Levy Amount
2012	2013	\$3.99	\$3,819,000
2013	2014	\$3.99	\$3,819,000

all as provided in Resolution No. 2.11-12. Should Proposition No. 1 be approved?

Yes ←

No ←

# Sample Ballot

## Clover Park School District No. 400

### Special Election - Proposition No. 1

#### Educational Programs and Operations Levy

The Board of Directors of Clover Park School District No. 400 adopted Resolution No. 12-016 concerning a proposition to finance educational programs and operations expenses. If approved, Proposition No. 1 would authorize the District to levy the following excess taxes, on all taxable property within the District, for support of the District's General Fund educational programs and operations expenses:

Levy Year	Collection Year	Approximate Levy Rate Per \$1,000 of Assessed Value	Levy Amount
2012	2013	\$3.95	\$20,181,000
2013	2014	\$3.80	\$20,762,000
2014	2015	\$3.87	\$21,104,000
2015	2016	\$3.86	\$21,196,000

all as provided in Resolution No. 12-016. Should Proposition No. 1 be approved?

Yes ←

No ←

## Peninsula School District No. 401

### Special Election - Proposition No. 1

#### Educational Programs and Operations Levy

The Board of Directors of Peninsula School District No. 401 adopted Resolution No. 11-08 concerning education funding. If approved, Proposition No. 1 would authorize the District to levy the following excess taxes, on all taxable property within the District, to support the District's educational programs and operations:

Levy Year	Collection Year	Approximate Levy Rate Per \$1,000 of Assessed Value	Levy Amount
2012	2013	\$2.14	\$19,959,160
2013	2014	\$2.27	\$21,140,463
2014	2015	\$2.38	\$22,569,083
2015	2016	\$2.34	\$23,321,982

all as provided in Resolution No. 11-08. Should Proposition No. 1 be approved?

Yes ←

No ←

## Franklin Pierce School District No. 402

### Special Election - Proposition No. 1

#### Capital Levy for School Improvements

The Board of Directors of Franklin Pierce School District No. 402 adopted Resolution No. 11-R-10 concerning a proposition to finance school improvements. If approved, Proposition No. 1 would authorize the District to levy the following excess taxes upon all taxable property within the District to make mechanical, safety/security, technological infrastructure, educational and other capital improvements to school facilities:

Levy Year	Collection Year	Approximate Levy Rate Per \$1,000 of Assessed Value	Levy Amount
2012	2013	\$1.77	\$5,500,000
2013	2014	\$1.75	\$5,500,000
2014	2015	\$1.72	\$5,500,000
2015	2016	\$1.68	\$5,500,000
2016	2017	\$1.65	\$5,500,000

all as provided in Resolution No. 11-R-10. Should Proposition No. 1 be approved?

Yes ←

No ←

## Eatonville School District No. 404

### Special Election - Proposition No. 1

#### Educational Programs and Operations Levy

The Board of Directors of Eatonville School District No. 404 adopted Resolution No. 590 concerning a proposition to partially fund the District's educational programs. If approved, Proposition No. 1 would authorize the District to levy the following excess taxes, in place of an expiring levy, on all taxable property within the District, to pay a portion of the District's educational program and operations expenses:

Levy Year	Collection Year	Approximate Levy Rate Per \$1,000 of Assessed Value	Levy Amount
2012	2013	\$4.29	\$4,902,487
2013	2014	\$4.29	\$5,147,612
2014	2015	\$4.29	\$5,404,992
2015	2016	\$4.29	\$5,675,242

all as provided in Resolution No. 590. Should Proposition No. 1 be approved?

Yes ←

No ←

# Sample Ballot

## Eatonville School District No. 404

### Special Election - Proposition No. 2

#### Dissolution of Director Districts and Reapportionment of District

The Board of Directors of Eatonville School District No. 404 adopted Resolution No. 595 concerning dissolution of existing director districts and reapportionment of the District. If approved, Proposition No. 2 would authorize the District to dissolve the five existing director districts and reapportion the District into no fewer than three director districts and no more than two directors at large, all as provided in Resolution No. 595. Should Proposition No. 2 be approved?

Yes ←

No ←

## Auburn School District No. 408

### Special Election - Proposition No. 1

#### Educational Program and Operations Replacement Levy

The Board of Directors of Auburn School District No. 408 adopted Resolution No. 1145 concerning educational funding. This proposition authorizes the District to levy the following excess taxes, to replace an expiring levy, on all taxable property within the District, to support the District's educational program and operations:

Collection Years	Approximate Levy	
	Rate/\$1,000 Assessed Value	Levy Amount
2013	\$4.05	\$33,600,000
2014	\$4.16	\$35,600,000
2015	\$4.31	\$37,600,000
2016	\$4.45	\$39,600,000

Should this proposition be approved?

Yes ←

No ←

### Special Election - Proposition No. 2

#### General Obligation Bonds - \$110,000,000

The Board of Directors of Auburn School District No. 408 approved a proposition for bonds. This proposition authorizes the District to modernize and reconstruct Auburn High School, including its Performing Arts Center and Automotive Technology building and other existing buildings, modernize and make improvements to the site, issue \$110,000,000 of general obligation bonds maturing within a maximum term of 20 years, and levy excess property taxes annually to repay the bonds, as described in Resolution No. 1146. Should this proposition be:

Approved ←

Rejected ←

## Riverside Fire & Rescue

### Special Election - Proposition No. 1

#### Property Tax Levy for Maintenance and Operation Expenses

The Board of Fire Commissioners of Pierce County Fire Protection District No. 14 (Riverside Fire & Rescue) adopted Resolution No. 2011-248 concerning a proposition to finance maintenance and operation expenses. If passed, Proposition No. 1 would allow the District to levy the following excess taxes, on all taxable property within the District, to be used for maintenance and operations to maintain the current level of fire and emergency medical services:

Levy Year	Collection Year	Approximate Levy	
		Rate Per \$1,000 of Assessed Value	Levy Amount
2012	2013	\$0.68	\$100,117
2013	2014	\$0.68	\$110,328
2014	2015	\$0.68	\$120,397
2015	2016	\$0.68	\$130,558

all as provided in Resolution No. 2011-248. Should Proposition No. 1 be approved?

Yes ←

No ←

# Return your ballot early!

## Why?

- Your vote will be included in the first tabulation of results.
- Why take the chance that your ballot will be received too late and not counted.
- We'll have more time to connect with you if we have any difficulty verifying your signature.



You can return your ballot through the mail or at a ballot deposit site as early as the day you receive it!

# Yelm Community Schools District No. 2

## Proposition No. 1

### Maintenance and Operations Levy

#### Ballot Title

The Board of Directors of Yelm Community Schools adopted Resolution No. 03-11-12, concerning a proposition to levy property taxes. This proposition would authorize the District to meet the educational needs of its students by levying the following excess taxes, in place of an expiring levy, on all taxable property within the District, for the support of the District's educational programs, maintenance and operations expenses:

<u>Collection Year</u>	<u>Approximate Levy Rate per \$1,000 of Assessed Value</u>	<u>Levy Amount</u>
2013	\$3.71	\$ 9,300,000
2014	\$3.79	\$ 9,700,000
2015	\$3.83	\$10,100,000
2016	\$3.92	\$10,700,000

Should this proposition be approved?

#### Explanatory Statement:

Yelm Community Schools provides educational services to children of the community in grades K-12. Passage of this proposition would help fund educational programs, maintenance and operations, including, but not limited to, staffing, school supplies and materials, transportation services, extracurricular programs, special education, staff in-service training, facility maintenance and operations, and other educational programs and operations expenses. The proposed levy will replace the District's current levy approved by the voters in 2008 that expires in the year 2012.

Taxes collected by the proposed levy will provide approximately 20% of the District's General Fund budget, including mandated programs not funded by the state.

Passage of this proposition would authorize the collection of taxes to provide \$9,300,000 in 2013; \$9,700,000 in 2014; \$10,100,000 in 2015; and \$10,700,000 in 2016. If authorized, these property taxes would be collected at an estimated tax levy rate of \$3.71 per \$1,000 of assessed value in 2013, increasing to an estimated \$3.92 per \$1,000 of assessed value in 2016.

Exemptions from taxes may be available to homeowners who are 61 or older, or disabled, and who meet certain income requirements. To determine if you qualify, call the Pierce County Assessor at 253.798.2169.

#### Statement For:

Yelm Community Schools needs and deserves your support for the Educational Programs, Maintenance and Operations Replacement Levy. *It is not a new tax*, but replaces the current levy. Passage of this levy is vital to maintain current educational programs for our kids. It makes up 18% of the total budget and supports virtually every aspect of school.

We have a lot to be proud of in Yelm. Student achievement is improving despite shrinking resources from the state. Our district has proven to be a good steward of public funds, having made \$1.1 million in cuts already and keeping this levy proposal *well below* the maximum allowed by the state.

Quality education is crucial for a strong community. We can be proud to be part of a community with a long history of supporting its kids. Our children need our support now more than ever. Please vote "yes" for Yelm Schools!

**Committee Members:** Jeff Dehan and Larry Schorno,  
[citizens4yelmsschools@gmail.com](mailto:citizens4yelmsschools@gmail.com)  
<https://sites.google.com/site/yelmreplacementlevy/>  
Citizens for Support of Yelm Schools

#### Statement Against:

No statement was submitted against this issue.

# Carbonado Historical School District No. 19

## Proposition No. 1

### Educational Programs and Operations Levy

#### Ballot Title

The Board of Directors of Carbonado Historical School District No. 19 adopted Resolution No. 02-11 concerning education funding. If approved, Proposition No. 1 would authorize the District to levy the following excess taxes, in place of an expiring levy, on all taxable property within the District, to support the District's educational programs and operations:

<u>Levy Year</u>	<u>Collection Year</u>	<u>Approximate Levy Rate Per \$1,000 of Assessed Value</u>	<u>Levy Amount</u>
2012	2013	\$5.51	\$522,000
2013	2014	\$5.52	\$538,000
2014	2015	\$5.52	\$554,000
2015	2016	\$5.53	\$571,000

all as provided in Resolution No. 02-11. Should Proposition No. 1 be approved?

#### Explanatory Statement:

Passage of Proposition No. 1 would allow the levy of \$522,000 in property taxes within Carbonado Historical School District for collection in 2013, the levy of \$538,000 in taxes for collection in 2014, the levy of \$554,000 in property taxes for collection in 2015, and the levy of \$571,000 in property taxes for collection in 2016. In accordance with Resolution No. 02-11 approving this proposition, these taxes would be deposited into the District's General Fund and used to pay for the educational programs and daily operations of the District. If authorized by the voters, such property taxes would be collected at a rate estimated to be \$5.51 per \$1,000 of assessed valuation in 2012, \$5.52 per \$1,000 of assessed valuation in 2013, \$5.52 per \$1,000 of assessed valuation in 2014, and \$5.53 per \$1,000 of assessed valuation in 2015.

#### Statement For:

The quality of a school district is one of the most important measures of a communities' overall health. Although the State of Washington funds basic education, the maintenance and operation levy picks up costs that are under funded by the State. The levy allows our district to fund additional teachers and classified employees to keep our class sizes low.

The levy also supports student learning materials, supplies, books, instructional technology materials, computer equipment, music programs, sports, transportation, maintenance and upkeep.

This *is not a new tax* but replaces the existing maintenance and operations levy that expires in December 2012. This levy is for four years. It is a renewal of what you supported four years ago.

The citizens of Carbonado have a long history of supporting their school and have never defeated a maintenance and operation levy. Supporting this levy will keep our investment working for us.

**Committee Members:** Sandi Carlson, sandi9carlson@yahoo.com, Kristin Visnaw, and Janet Porter

#### Statement Against:

No statement was submitted against this issue.

# Dieringer School District No. 343

## Proposition No. 1

### Educational Programs and Operations Levy

#### Ballot Title

The Board of Directors of Dieringer School District No. 343 adopted Resolution No. 03-11-12 concerning a proposition to finance educational programs, maintenance and operations. If approved, Proposition No. 1 would authorize the District to meet the educational needs of its students by levying the following excess taxes, in place of an expiring levy, on all taxable property within the District, for support of the District's General Fund educational programs, maintenance and operations expenses:

<u>Levy Year</u>	<u>Collection Year</u>	<u>Approximate Levy Rate Per \$1,000 of Assessed Value</u>	<u>Levy Amount</u>
2012	2013	\$4.34	\$5,450,000
2013	2014	\$4.82	\$5,750,000

all as provided in Resolution No. 03-11-12. Should Proposition No. 1 be approved?

#### Explanatory Statement:

Passage of Proposition 1 would allow the Dieringer School District to replace an existing educational programs, maintenance and operations levy that will expire at the end of calendar year 2012. The proposed two-year replacement educational programs, maintenance and operations levy would authorize collection of taxes to provide \$5,450,000 in 2013 and \$5,750,000 in 2014. The tax levy rate required to produce these levy amounts is estimated to be \$4.34 per \$1,000 of assessed value in 2013 and \$4.82 per \$1,000 of assessed value in 2014.

The taxes collected by this levy will be deposited in the District's General Fund and used to meet the educational needs of students, operate educational programs and pay general expenses of maintenance and operations that are not fully funded by the State. These expenses include, but are not limited to, maintaining reasonably low class sizes, staffing, supplies and materials, transportation services, extracurricular programs, special education, utilities, payments to high school districts, and facility maintenance and operation.

Exemptions from taxes for levies may be available to homeowners who are 61 or older, or disabled, and who meet certain income requirements. To determine if you qualify, call the Pierce County Assessor at 253.798.2169.

#### Statement For:

##### *Local money is needed for our schools*

The state pays about 70% of our schools' education budget; the rest comes from a local, voter-approved levy. The current levy expires next year. We are asking voters to approve the replacement Educational Levy on Feb. 14.

##### *Without it, our schools would suffer*

Levy monies are crucial for educational programs and fixed expenses. They pay for teacher salaries, academic programs, building maintenance, supplies, after-school activities and sports, transportation and more. Without the funds, we would see classroom sizes rise, buses become more crowded, buildings fall into disrepair, and our children's education suffer.

##### *The levy replaces the expiring one*

The current levy expires next year and this one takes its place. It is similar to past levies, so residents will see their property taxes stay about the same or even recede, as the economy improves and new homes broaden the tax base.

##### *State budget cuts take a bite*

Our schools will bear the brunt of state budget cuts. Local voters must vote yes to maintain the quality of Dieringer schools.

**Committee Members:** Kelly Baker, 253-863-1572, Robert Corliss, and James Premo, Dieringer Citizens for Schools

#### Statement Against:

No statement was submitted against this issue.

# Orting School District No. 344

## Proposition No. 1

### Educational Programs and Operations Levy

#### Ballot Title

The Board of Directors of Orting School District No. 344 adopted Resolution No. 2.11-12 concerning education funding. If approved, Proposition No. 1 would authorize the District to levy the following excess taxes, to replace an expiring levy, on all taxable property within the District, to support the District's educational maintenance and daily operations, including teachers, staff, classroom materials and textbooks:

<u>Levy Year</u>	<u>Collection Year</u>	<u>Approximate Levy Rate Per \$1,000 of Assessed Value</u>	<u>Levy Amount</u>
2012	2013	\$3.99	\$3,819,000
2013	2014	\$3.99	\$3,819,000

all as provided in Resolution No. 2.11-12. Should Proposition No. 1 be approved?

#### Explanatory Statement:

Passage of Proposition No.1 would allow the levy of \$3,819,000 in property taxes within Orting School District for collection in 2013 and the levy of \$3,819,000 in taxes for collection in 2014. In accordance with Resolution No. 2.11-12 approving this proposition, these taxes would be deposited into the District's General Fund and used to pay for educational programs and services, including teachers, instructional aides, nurses, librarians and other staff, technology support, athletics, arts, music and safety programs, textbooks and other classroom materials, and maintaining playgrounds, playfields and other facilities. If authorized by the voters, property taxes would be collected at a rate estimated to be \$3.99 per \$1,000 of assessed valuation in 2012 and \$3.99 per \$1,000 of assessed valuation in 2013.

#### Statement For:

The Orting School District Maintenance and Operations Levy replaces our current levy that ends in 2012. *The state does not adequately fund basic education.* Levy funds account for approximately 20% of the basic operating budget, providing critical and otherwise unfunded support for textbooks, lower class sizes, and unfunded expenses for student transportation, safety staff for playgrounds and highway monitors, technology, grounds and facilities maintenance. Levy funds also support all sports and activity programs.

With this proposition, tax rates are expected to remain stable over the next two years at a rate of \$3.99 per \$1,000 of valuation. In addition, the District is eligible for an estimated \$500,000 in state levy equalization funding with the approval of this proposition.

Support for this maintenance and operation levy will ensure the districts continuing capacity to provide the quality educational programs our children deserve.

**Committee Members:** *Laura Oriolt, loriolt@gmail.com, Laura Fischer, and Kacy Nesby  
Citizens for Orting Schools*

#### Statement Against:

No statement was submitted against this issue.

# Clover Park School District No. 400

## Proposition No. 1

### Educational Programs and Operations Levy

#### Ballot Title

The Board of Directors of Clover Park School District No. 400 adopted Resolution No. 12-016 concerning a proposition to finance educational programs and operations expenses. If approved, Proposition No. 1 would authorize the District to levy the following excess taxes, on all taxable property within the District, for support of the District's General Fund educational programs and operations expenses:

<u>Levy Year</u>	<u>Collection Year</u>	<u>Approximate Levy Rate Per \$1,000 of Assessed Value</u>	<u>Levy Amount</u>
2012	2013	\$3.95	\$20,181,000
2013	2014	\$3.80	\$20,762,000
2014	2015	\$3.87	\$21,104,000
2015	2016	\$3.86	\$21,196,000

all as provided in Resolution No. 12-016. Should Proposition No. 1 be approved?

#### Explanatory Statement:

Clover Park School District is requesting voters to approve Proposition 1 to replace the existing educational levy that will expire at the end of this calendar year. Proposition 1 authorizes a series of four one-year levies to pay for approximately 15% of the overall costs of operations of the school district. The taxes collected by this levy will be used to meet the educational needs of students and pay general expenses of school programs and daily operations that are not fully funded by the State (such as supplies, textbooks, support staff and transportation). These are costs deemed essential by the School Board to meet the educational needs of its students, including the expenses of educational programs, students services and operational support. Passage of Proposition 1 would authorize collection of taxes to provide an additional \$20,181,000 in 2013, \$20,762,000 in 2014, \$21,104,000 in 2015, and \$21,196,000 in 2016. The tax levy rate required to produce these levy amounts is estimated to be \$3.95 in 2013, \$3.80 in 2014, \$3.87 in 2015, and \$3.86 in 2016 (approximate levy rate per \$1,000 of assessed value).

#### Statement For:

Clover Park schools depend on an educational and operations levy to provide for the educational needs of children. Your yes vote is urgently needed.

This is not a new tax; the current levy expires in December 2012. This levy replaces it and allows schools to continue current educational programs and services for children.

Levy dollars are used to hire teachers to maintain low class sizes, pay for nurses, health clerks, counselors and staff to ensure our schools are safe. Levy dollars buy classroom computers, textbooks, instructional supplies and materials. They provide for the maintenance and safety of our 25 schools.

Our tax rate is one of the lowest tax rates in Pierce County. Your yes vote maintains our low rates and helps to provide a quality education for our children.

Kids are the point, please vote yes!

**Committee Members:** *Claudia Thomas, Joe Vlaming, and Deidre Porterfield*  
*cloverparkcitizensforschools.org*  
*Clover Park Citizens Committee for Schools*

#### Statement Against:

No statement was submitted against this issue.

# Peninsula School District No. 401

## Proposition No. 1

### Educational Programs and Operations Levy

#### Ballot Title

The Board of Directors of Peninsula School District No. 401 adopted Resolution No. 11-08 concerning education funding. If approved, Proposition No. 1 would authorize the District to levy the following excess taxes, on all taxable property within the District, to support the District's educational programs and operations:

<u>Levy Year</u>	<u>Collection Year</u>	<u>Approximate Levy Rate Per \$1,000 of Assessed Value</u>	<u>Levy Amount</u>
2012	2013	\$2.14	\$19,959,160
2013	2014	\$2.27	\$21,140,463
2014	2015	\$2.38	\$22,569,083
2015	2016	\$2.34	\$23,321,982

all as provided in Resolution No. 11-08. Should Proposition No. 1 be approved?

#### Explanatory Statement:

Passage of Proposition No. 1 would allow the levy of \$19,959,160 in property taxes within Peninsula School District for collection in 2013, the levy of \$21,140,463 for collection in 2014, the levy of \$22,569,083 for collection in 2015, and the levy of \$23,321,982 for collection in 2016. In accordance with Resolution No. 11-08 approving this proposition, these taxes would be deposited in the Peninsula School District's General Fund to pay part of the general expenses of operating the District. General expenses of the District include employee costs (such as salaries), instructional materials, special programs, activities and sports, technology systems operation, transportation costs, maintenance of facilities and other non-capital expenses of operating the District schools. If authorized by the voters, such property taxes would be collected at a rate estimated to be \$2.14 per \$1,000 of assessed valuation in 2012, \$2.27 per \$1,000 of assessed valuation in 2013, \$2.38 per \$1,000 of assessed valuation in 2014 and \$2.34 per \$1,000 of assessed valuation in 2015.

#### Statement For:

Your "Yes" vote on Replacement Educational Programs and Operations Levy is vital to our community.

#### *To Maintain Quality Schools*

Our Gig Harbor Peninsula area has one of the best school districts in the state; the passing of this levy is *imperative to maintain quality schools in our district which not only benefits our children, but businesses, property values and our community as a whole.*

#### *This is Not a New Levy*

*This Replacement Levy renews an expiring levy approved by voters in 2009 whereby it is a continuation of our District's budget that is already in place.*

#### *Lowest Levy Tax Rates in the County*

*Peninsula School District currently has the lowest levy tax rates in Pierce County.*

#### *Day-to-Day Operations of our Schools at Risk*

*The state does not adequately fund education. This Replacement Levy will provide over 20% of Peninsula School District's funding for day-to-day operations.*

*An Audit Committee is in place to ensure your tax dollars are properly spent towards the schools in our District.*

Thank you for supporting our Peninsula School District.

**Committee Members:** Sandy Jones, 253-226-6058,  
Richard Bowe, and Jim Falcocchio,  
[www.supportgreatschools.com](http://www.supportgreatschools.com)  
Citizen's for Peninsula Schools

#### Statement Against:

No statement was submitted against this issue.

# Franklin Pierce School District No. 402

## Proposition No. 1

### Capital Levy for School Improvements

#### Ballot Title

The Board of Directors of Franklin Pierce School District No. 402 adopted Resolution No. 11-R-10 concerning a proposition to finance school improvements. If approved, Proposition No. 1 would authorize the District to levy the following excess taxes upon all taxable property within the District to make mechanical, safety/security, technological infrastructure, educational and other capital improvements to school facilities:

<u>Levy Year</u>	<u>Collection Year</u>	<u>Approximate Levy Rate Per \$1,000 of Assessed Value</u>	<u>Levy Amount</u>
2012	2013	\$1.77	\$5,500,000
2013	2014	\$1.75	\$5,500,000
2014	2015	\$1.72	\$5,500,000
2015	2016	\$1.68	\$5,500,000
2016	2017	\$1.65	\$5,500,000

all as provided in Resolution No. 11-R-10. Should Proposition No. 1 be approved?

#### Explanatory Statement:

Passage of Proposition 1 would authorize the Franklin Pierce School District to levy annually for five years excess property taxes to pay costs for certain school improvements. The taxes collected by this levy will only be used to pay costs to: make mechanical, safety/security, technological infrastructure, educational and other capital improvements to school facilities, all as deemed necessary and advisable by the Board. These projects were recommended to the Board by a committee of citizens in Spring 2011.

The proposed five-year capital levy would authorize the collection of taxes to provide \$5,500,000 each year from 2013 through 2017. If authorized, these property taxes would be collected in the first year of collection at an estimated tax levy rate of \$1.77 per \$1,000 of assessed value in 2013. Thereafter, rates will decrease each year to an estimated \$1.65 per \$1,000 of assessed value in the final year of collection in 2017.

Exemptions from taxes for levies may be available to homeowners who are 61 or older, or disabled, and who meet certain income requirements. To determine if you qualify, call the Pierce County Assessor at 253.798.2169.

#### Statement For:

Please vote *Yes!* This levy will provide facility improvements to our neighborhood schools! Our schools are 52 years old on average. This levy pays for *basic improvements* to classrooms in all schools. These improvements were proposed to the School Board by a group of community members that met last year to review facility needs at all schools.

*Classrooms will be modernized to improve spaces for teaching and learning*

Every classroom throughout the district will be upgraded. These improvements will increase access to technology and enable teachers to make classrooms more effective for teaching and learning.

*Old, obsolete, and failing mechanical systems will be replaced*

Every school throughout the district will be modernized. Improvements will include heating, cooling, electrical, plumbing, and other mechanical systems so that the buildings can continue being safe, healthy, and vibrant places for our kids to learn.

*Overcrowding at middle school cafeterias will be fixed*

The cafeterias at Ford and Keithley Middle Schools are currently overcrowded. Expanding these cafeterias will give students time to eat, and create adequate space for assemblies, school performances, and events.

**Committee Members:** Lee Warnaca, 253-536-4494, Charity Becker, and Tom Utterback, [fpelections@gmail.com](mailto:fpelections@gmail.com)  
Franklin Pierce Citizens for Schools

#### Statement Against:

No statement was submitted against this issue.

# Eatonville School District No. 404

## Proposition No. 1

### Educational Programs and Operations Levy

#### Ballot Title

The Board of Directors of Eatonville School District No. 404 adopted Resolution No. 590 concerning a proposition to partially fund the District's educational programs. If approved, Proposition No. 1 would authorize the District to levy the following excess taxes, in place of an expiring levy, on all taxable property within the District, to pay a portion of the District's educational program and operations expenses:

<u>Levy Year</u>	<u>Collection Year</u>	<u>Approximate Levy Rate Per \$1,000 of Assessed Value</u>	<u>Levy Amount</u>
2012	2013	\$4.29	\$4,902,487
2013	2014	\$4.29	\$5,147,612
2014	2015	\$4.29	\$5,404,992
2015	2016	\$4.29	\$5,675,242

all as provided in Resolution No. 590. Should Proposition No. 1 be approved?

#### Explanatory Statement:

Eatonville School District is requesting voters to approve Proposition 1, a series of four one-year educational programs and operations levies for the District's general fund to replace the existing levy that will expire at the end of this calendar year. This proposition authorizes the collection of taxes to pay for existing programs that are not fully funded by the state and are deemed to be essential by the school board. Specifically, about 68% of the levy dollars would pay a portion of the funds needed for the District's instructional program including teachers' salaries, textbooks, field trips and other instructional materials as well as the purchase of classroom equipment and technology.

Approximately 13% of levy funds would be spent for the maintenance of schools and other facilities including roof and safety/security improvements. Finally, 16% of levy funds would be devoted to student activities and athletics and 3% would be spent to continue enhanced student school-to-home transportation. The fixed dollar amounts to be collected in each of the four calendar years beginning in 2012 will be obtained by an annual tax levy rate of approximately \$4.29 per \$1,000 of assessed property value.

#### Statement For:

Eatonville Schools deserve your support for the educational and operations replacement levy. This is not a new tax, but replaces the current levy and is vital to support educational programs for our students. The levy comprises about 21 percent of our revenues and is used to support teachers, aides, materials, basic operations and student activities and sports.

Our district has beautiful facilities that will be maintained. Our graduation rate has increased and is above the state average. Test scores are beginning to rise and many of our students are pursuing their education beyond high school. Great instruction and improved achievement continue to be a major priority as we provide a safe and healthy environment for our kids.

We are proud to be part of a community that cares about kids. Keep our schools strong by voting "yes" for Eatonville Schools

**Committee Members:** *Kathy Hugh, Kathyh@mashell.com, Ronda Litzenberger, Rowronda@AOL.com, and Nick Lamothe, Citizens for Education*

#### Statement Against:

No statement was submitted against this issue.

# Eatonville School District No. 404

## Proposition No. 2

### Dissolution of Director Districts and Reapportionment of District

---

#### Ballot Title

The Board of Directors of Eatonville School District No. 404 adopted Resolution No. 595 concerning dissolution of existing director districts and reapportion of the District. If approved, Proposition No. 2 would authorize the District to dissolve the five existing director districts and reapportion the District into no fewer than three director districts and no more than two directors at large, all as provided in Resolution No. 595. Should Proposition No. 2 be approved?

---

#### Explanatory Statement:

Every ten years the federal government conducts a census. Soon after the census is finished local municipalities are required to review district boundaries along with population distribution to verify equity of representation. The Eatonville School District presently has five director districts that represent the school district equally based on a study conducted by Sammamish Data Systems. The Eatonville School Board desires to redistrict to three designated director districts and two at large positions.

---

#### Statement For:

The Eatonville District is a large geographic district with the main portion of the population centered around the town of Eatonville. At the last census all municipalities are required to review their districts so that even representation is maintained. The Eatonville School District currently has five director districts that represent the district equally. It is imperative that qualified candidates be available to serve the community as a school board member. At times it is difficult to get representation from certain portions of the district and the Eatonville School Board would like support for changing to three designated director districts and two at large districts so that more potential candidates are available to serve as board vacancies appear. A vote "yes" will allow the Eatonville School District to reconfigure to three equal districts and two at large positions.

**Committee Members:** *Robert Homan, 253-370-0253, nithdalefarm@msn.com, Paulette Gilliard, and Roger Andrascik  
Board of Directors*

---

#### Statement Against:

No statement was submitted against this issue.

# Auburn School District No. 408

## Proposition No. 1

### Educational Program and Operations Replacement Levy

#### Ballot Title

The Board of Directors of Auburn School District No. 408 adopted Resolution No. 1145 concerning educational funding. This proposition authorizes the District to levy the following excess taxes, to replace an expiring levy, on all taxable property within the District, to support the District's educational program and operations:

<u>Collection Years</u>	<u>Approximate Levy Rate/ \$1,000 Assessed Value</u>	<u>Levy Amount</u>
2013	\$4.05	\$33,600,000
2014	\$4.16	\$35,600,000
2015	\$4.31	\$37,600,000
2016	\$4.45	\$39,600,000

Should this proposition be approved?

#### Explanatory Statement:

Passage of Proposition No. 1 would allow the levy of \$33,600,000 in property taxes within Auburn School District for collection in 2013, the levy of \$35,600,000 in taxes for collection in 2014, the levy of \$37,600,000 in taxes for collection in 2015 and the levy of \$39,600,000 in taxes for collection in 2016. In accordance with Resolution No. 1145 approving this proposition, these taxes would be deposited in the Auburn School District's General Fund to pay part of the general expenses of operating the District. General expenses of the District include employee costs (such as salaries), instructional materials, special programs, activities and sports, technology systems operation, transportation costs, maintenance of facilities and other non-capital expenses of operating the District schools. If authorized by the voters, such property taxes would be collected at a rate estimated to be \$4.05 per \$1,000 of assessed valuation in 2012, \$4.16 per \$1,000 of assessed valuation in 2013, \$4.31 per \$1,000 of assessed valuation in 2014, \$4.45 per \$1,000 of assessed valuation in 2015.

#### Statement For:

The Auburn Citizens for Schools Committee encourages voters to support Auburn School District's Educational Program and Operations *replacement* levy for 2013, 2014, 2015 and 2016 by voting "Yes" for Proposition 1. This levy will *replace* the expiring levy previously approved by local voters. It will fund 22% of the district's operating budget that is essential to continuing the quality education provided to our students.

*Important Education Programs Depend on Levy*  
Currently, the state does not fully fund basic education and has made continued funding cuts to our schools. These *replacement* levy dollars will support lower class sizes, special and gifted education programs; safe student transportation; and maintenance and custodial services, which ensure school building longevity and student safety. Levy dollars fund *all* athletics and activities such as band, orchestra, drama and debate.

This levy will provide the resources for the educational programs and services for our children. *Vote "Yes" - "Their education is our future."*

**Committee Members:** Ryan Anderson, Clarissa Ruston, Kelly McDonald  
<http://auburncitizens4schools.weebly.com/>  
Auburn Citizens For Schools

#### Statement Against:

No statement was submitted against this issue.

# Auburn School District No. 408

## Proposition No. 2

### General Obligation Bonds - \$110,000,000

#### Ballot Title

The Board of Directors of Auburn School District No. 408 approved a proposition for bonds. This proposition authorizes the District to modernize and reconstruct Auburn High School, including its Performing Arts Center and Automotive Technology building and other existing buildings, modernize and make improvements to the site, issue \$110,000,000 of general obligation bonds maturing within a maximum term of 20 years, and levy excess property taxes annually to repay the bonds, as described in Resolution No. 1146. Should this proposition be approved or rejected?

#### Explanatory Statement:

Passage of proposition No. 2 would authorize Auburn School District to borrow \$110,000,000 by issuing general obligation bonds. In accordance with Resolution No. 1146 approving this proposition, the bonds will provide funding for modernizing and reconstructing Auburn High School, including replacement of approximately 240,000 square feet of existing buildings, modernization of the Performing Arts Center and Automotive Technology building, as well as modernization and improvements to the site, and making other capital improvements to District facilities. The bonds would be repaid out of annual property tax levies over a period of 20 years. The exact amount of such annual levies for these bonds would depend on the amount of principal paid each year and on the interest rates available at the time the bonds are sold, but levies are expected to increase an average of approximately \$0.79 per \$1,000 of assessed value for the term of the bonds.

#### Statement For:

##### *Auburn High School Needs Our Attention*

This bond issue will allow the rich traditions and legacy of Auburn High School to continue in a new facility located back on Main Street. The Auburn School District will continue its long-term commitment to providing quality schools to support quality education for our all kids.

##### *Citizen's Ad Hoc Committee Recommends*

The bond issue will provide the resources to reconstruct and modernize Auburn High School on the existing site. Replacing approximately 240,000 square feet of existing buildings, modernizing the Performing Arts Center and Automotive Technology building, modernizing and improving the site, including improved parking and access to facilities used by our community.

##### *New Educational Standards*

The strong legacy of Auburn High School will continue and the new building will provide modern learning environments, technology, improved health, safety, security, and access for persons with disabilities while maintaining a level school tax. Vote "Yes" to assure quality education and facilities for all kids now and into their future.

**Committee Members:** Ryan Anderson, Clarissa Ruston, Kelly McDonald  
<http://auburncitizens4schools.weebly.com/>  
Auburn Citizens For Schools

#### Statement Against:

No statement was submitted against this issue.

# What can you vote on?

## 1. Check your Voter ID card - This card lists the districts you live in.

CERTIFICATE OF REGISTRATION PIERCE COUNTY, WASHINGTON

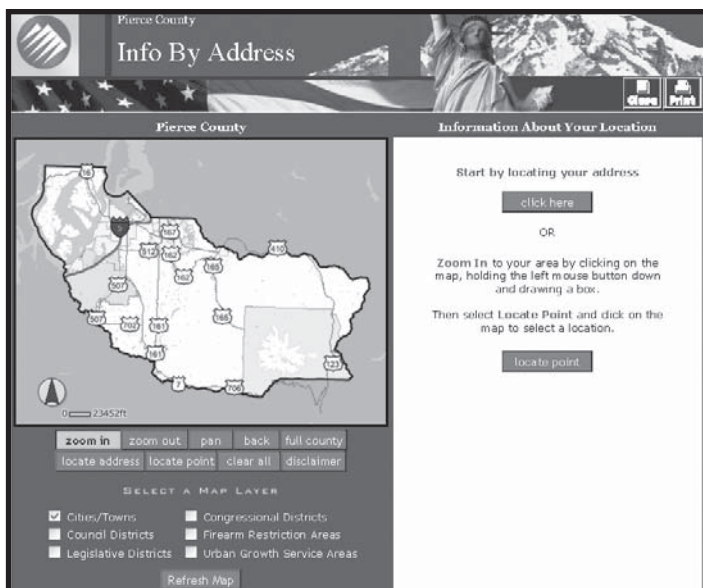
REG DATE: 9/10/1992                      COUNTY ID: 244111  
PRECINCT NAME: 25-132                      STATE ID: WA0005555

A ballot will be mailed to you each election.

<b>CONG</b> CG 9	<b>LEG</b> LEG 25	<b>CO. COUNCIL</b> CC1	<b>CITY</b> EDG	<b>PORT</b> TACOMA
<b>SCHOOL</b> SD 3	<b>FIRE</b> FIRE 8	<b>WATER</b> NONE	<b>SEWER</b> NONE	<b>PARK</b> NONE

CINDY LYMUS  
1500 S MADISON ST  
EDGEWOOD, WA 98371

## 2. Use Info By Address



- Visit [piercecountywa.org/elections](http://piercecountywa.org/elections)
- Under Voter Services, click **Info By Address**
- Enter your address to find your district information, elected officials, maps, and more.

## 3. Sign up and use My Vote - Personalized Voting Information

# myvote

Visit [piercecountywa.org/elections](http://piercecountywa.org/elections)

Log in to check your voter registration status, view a sample ballot, or see if we've received your ballot.

- ## 4. Contact Us -
- 253-798-VOTE (8683) or 800-446-4979  
[pcelections@co.pierce.wa.us](mailto:pcelections@co.pierce.wa.us)  
[piercecountywa.org/elections](http://piercecountywa.org/elections)



# Fire District No. 14 (Riverside Fire & Rescue)

## Proposition No. 1

### Property Tax Levy for Maintenance and Operation Expenses

#### Ballot Title

The Board of Fire Commissioners of Pierce County Fire Protection District No. 14 (Riverside Fire & Rescue) adopted Resolution No. 2011-248 concerning a proposition to finance maintenance and operation expenses. If passed, Proposition No. 1 would allow the District to levy the following excess taxes, on all taxable property within the District, to be used for maintenance and operations to maintain the current level of fire and emergency medical services:

<u>Levy Year</u>	<u>Collection Year</u>	<u>Approximate Levy Rate Per \$1,000 of Assessed Value</u>	<u>Levy Amount</u>
2012	2013	\$0.68	\$100,117
2013	2014	\$0.68	\$110,328
2014	2015	\$0.68	\$120,397
2015	2016	\$0.68	\$130,558

all as provided in Resolution No. 2011-248. Should Proposition No. 1 be approved?

#### Explanatory Statement:

The Board of Fire Commissioners of Fire Protection District No. 14 (Riverside) has passed a resolution requesting an election to re-authorize for four years a maintenance and operations property tax levy approved in 2008. The State's voters and the State Legislature, respectively, amended the Constitution and the Revised Code of Washington in 2002 to allow maintenance and operation levies for fire districts for up to four years.

In 1939, the legislature established fire districts to serve rural areas, rather than urban areas like Riverside. The regular levy is inadequate to provide fire, emergency medical and rescue services to a district with more than 3,500 residents. The department and the voters have found it necessary to supplement the regular levy since 2000.

This levy funds about 25% of the department's budget. By spreading costs over four years, the district is able to limit the levy to sixty-eight (68) cents per thousand dollars of assessed valuation, to be collected annually from 2013 to 2016. The law prohibits any additional tax levies for maintenance and operational support of the district for this four-year period, if the voters approve this levy.

#### Statement For:

Riverside is a small community located between the cities of Tacoma and Puyallup. Through funds raised from our community's taxes and previous M/O levies, Riverside Fire and Rescue is able to provide dependable quality emergency services. While growth and development have maintained the same, the need for emergency services continues to increase. The M/O levy is approximately 25% of Riverside's revenue that funds the budget and is imperative to meeting our community's increasing needs for emergency services.

Your support is necessary to maintain the current level of services provided by Riverside Fire and Rescue. The renewal of the M/O levy will allow us to continue our current level of staffing as well as provide a continuation of training, guaranteeing the quality and dependability of care our community deserves.

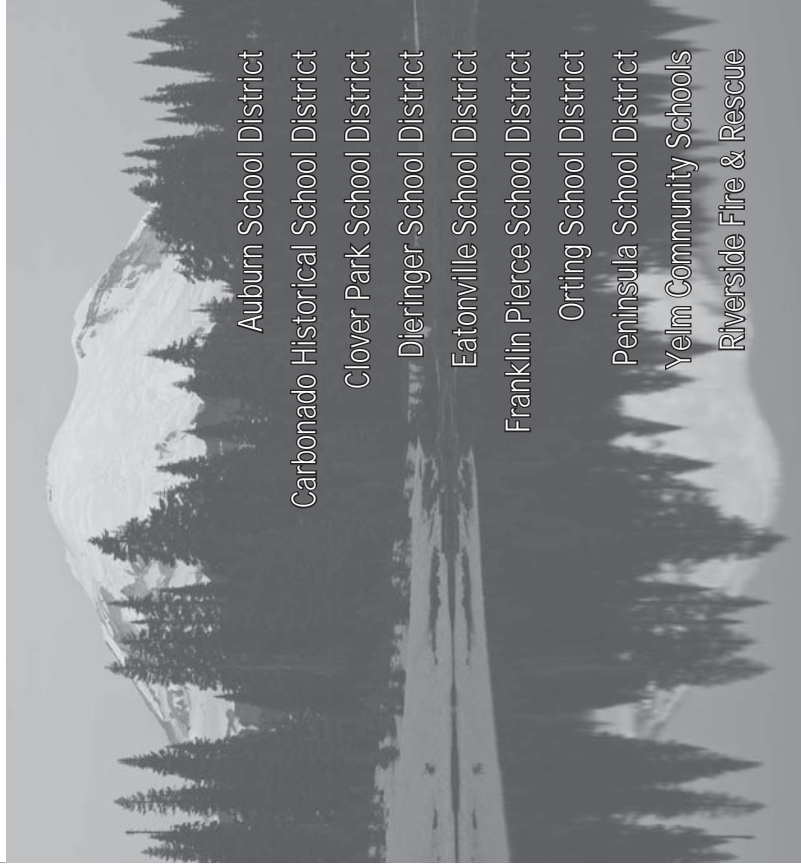
You're Yes vote will ensure the continuation of quality emergency services for the community.

**Committee Members:** Tony Cooper,  
tony.cooper14@yahoo.com, John Campbell, and  
Larry D. Cross  
*Citizens for a safe community*

#### Statement Against:

No statement was submitted  
against this issue.

Pierce County Official Local  
**Voters' Pamphlet**  
February 14, 2012 Special Election



Auburn School District  
Carbonado Historical School District  
Clover Park School District  
Dieringer School District  
Eatonville School District  
Franklin Pierce School District  
Orting School District  
Peninsula School District  
Yelm Community Schools  
Riverside Fire & Rescue



If you do not receive your ballot by  
February 3, 2012, contact us to request  
a replacement ballot:

253-798-VOTE (8683) or 800-446-4979  
pcelections@co.pierce.wa.us  
piercecountywa.org/elections



Pierce County Auditor's Office  
2501 S 35th St, Suite C  
Tacoma, WA 98409  
253-798-VOTE (8683)

**February 14, 2012  
Special Election**



NON-PROFIT ORG  
U.S. POSTAGE  
PAID  
TACOMA, WA  
PERMIT NO. 19