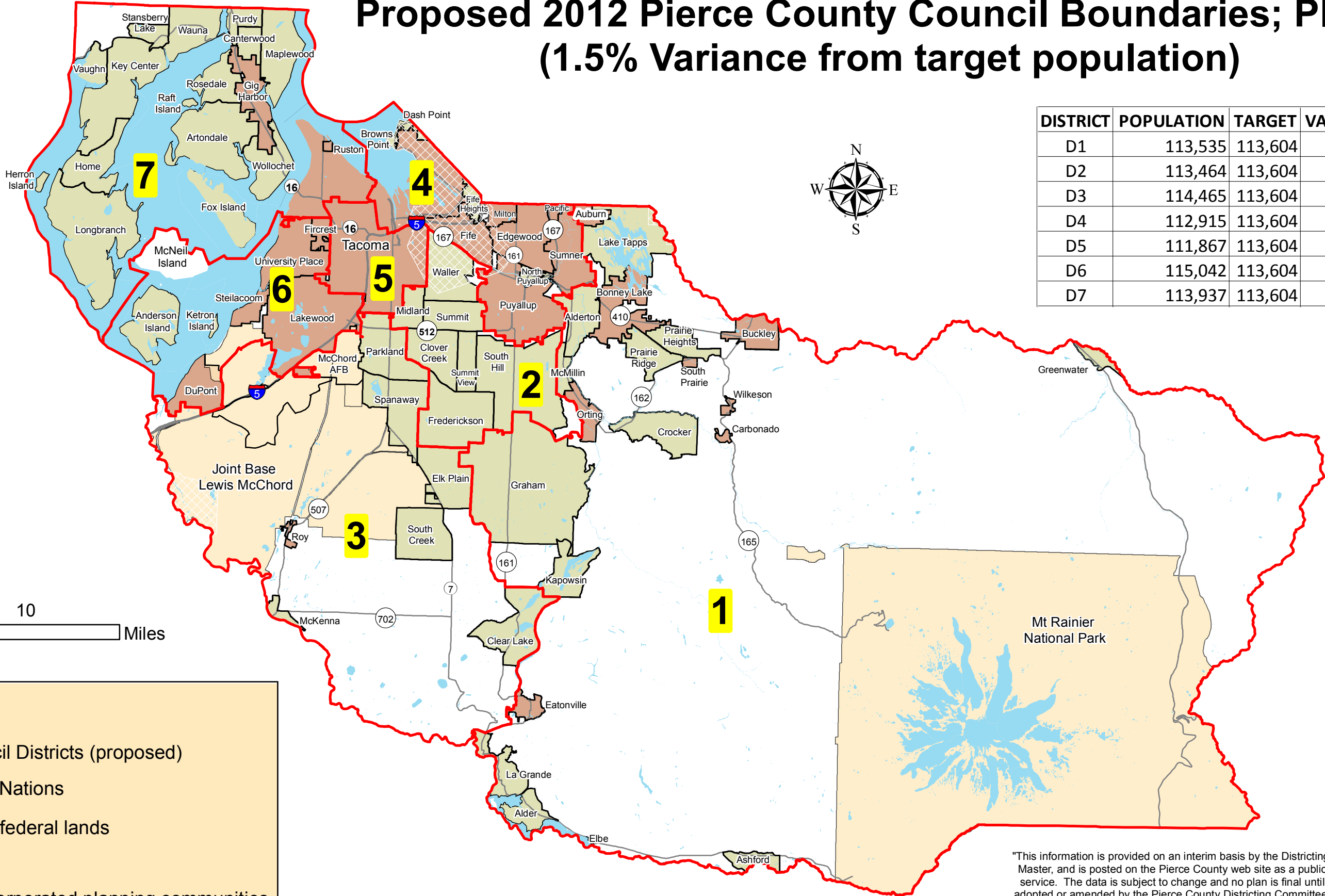


# Proposed 2012 Pierce County Council Boundaries; Plan B (1.5% Variance from target population)

DISTRICT	POPULATION	TARGET	VARIANCE
D1	113,535	113,604	99.9%
D2	113,464	113,604	99.9%
D3	114,465	113,604	100.8%
D4	112,915	113,604	99.4%
D5	111,867	113,604	98.5%
D6	115,042	113,604	101.3%
D7	113,937	113,604	100.3%



**Legend**

- Council Districts (proposed)
- Tribal Nations
- Major federal lands
- Cities
- Unincorporated planning communities

Version date: June 2, 2011

"This information is provided on an interim basis by the Districting Master, and is posted on the Pierce County web site as a public service. The data is subject to change and no plan is final until adopted or amended by the Pierce County Districting Committee as provided by Charter 4.60."