

SECTION 2

REGION 5 HAZARD MITIGATION PLAN TOWN OF EATONVILLE PROFILE SECTION

Table of Contents

TABLE OF CONTENTS	1
VISION STATEMENT	2
SERVICES SUMMARY	2
GEO-POLITICAL SUMMARY	3
POPULATION SUMMARY	5
DEMOGRAPHICS	5
SPECIAL POPULATIONS	5
INFRASTRUCTURE SUMMARY	5
GENERAL	5
JURISDICTION INFRASTRUCTURE	6
ECONOMIC SUMMARY	8
RESOURCE DIRECTORY	9
REGIONAL	9
NATIONAL	9
ENDNOTES	10

Vision Statement

The Vision of the Town of Eatonville is as follows:

Eatonville, heart and hub of South Pierce County, our community honors its heritage, working together to create a living legacy of rich and diverse economic, educational and recreational opportunities in a healthy environment, meeting the needs of residents and visitors on the Pathway to Paradise.

Services Summary

The Town of Eatonville was incorporated in the year 1909.

The Town provides the following services through their own capabilities:

Table 2-1 Town Services¹

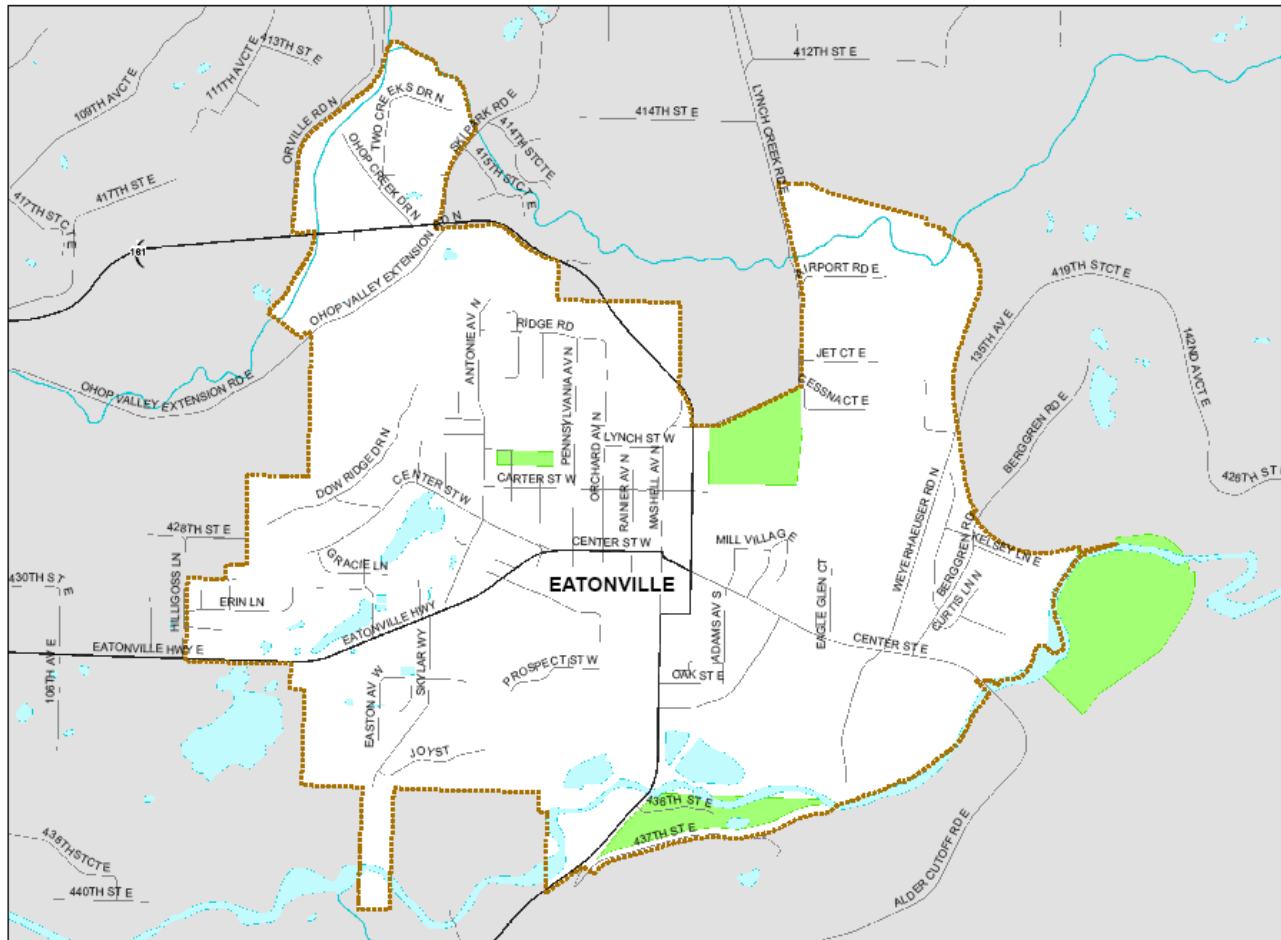
TOWN SERVICES			
Service	Yes	Service	Yes
Town Mayor	Yes	Municipal Airport	Yes
Town Attorney	Yes	Municipal Court	Yes
Town Clerk	Yes	Public Works/Improvements	Yes
Town Treasurer	Yes	Comprehensive Planning	Yes
Sheriff or Police Chief	Yes	Purchase of Electric Power and Energy	Yes
Parks Commissioners	No	Construction and Operation of Boat Harbors, Marinas, Docks, etc.	No
Town Council	Yes	Issue Bonds and Levies of General Tax	Yes
License and Tax Fees	Yes	Fire Department/EMS	Yes
Non-Polluting Power Generation	No	Parking, Off-street Facilities	No
Hydroelectric Resources	No	Sanitary Landfill/Refuse Service	Yes
Radio Communications	Yes	Sidewalks	Yes
Streets	Yes	Storm Drains	Yes
Waste Water Treatment	Yes	Streets/Alleys	Yes
Water System	Yes	Parks and Parkways	Yes
Public Transportation Systems	No	Water Pollution Abatement	Yes
Residential Care Facilities	No	Local Improvement Districts	No
Child Care Facilities	No	Parking Meters Revenue	No
Emergency Management	Yes		

Geo-Political Summary

Table 2-2 Geo-Political Summary²

Jurisdiction	Area (sq mi)	Elevation Range (ft.)	Major Water Features	Regional Partners	
				Shared Borders	Land Use Authorities
Town of Eatonville	1.51	600-900	<ul style="list-style-type: none"> • Nisqually Tribe • 14-Ohop Creek Basin • 20-Mashel River Basin 	<ul style="list-style-type: none"> • Unincorporated Pierce County 	<ul style="list-style-type: none"> • Unincorporated Pierce County

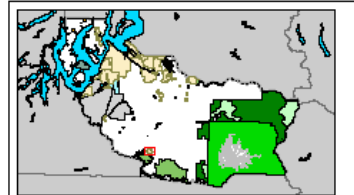
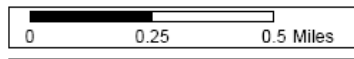
TOWN OF EATONVILLE - BASEMAP



LEGEND

- EATONVILLE
- PARKS/OPEN SPACE
- OTHER CITIES
- WATER BODY
- RIVERS/STREAMS
- PIERCE COUNTY BOUNDARY
- LIMITED ACCESS HIGHWAY
- MAJOR ROAD
- ROADS

The map features are appropriate and are intended only to provide an indication of said feature. Additional areas that have not been mapped may be present. This is not a survey. The County assumes no liability for variations ascertained by actual survey. ALL DATA IS EXPRESSLY PROVIDED AS IS AND WITH ALL FAULTS. The County makes no warranty of fitness for a particular purpose.



Oct 11, 2008

Pierce County
Emergency Management

Population Summary

Demographics

Table 2-1 Population^{3, 4, 5, 6}

Jurisdiction	Population	Population Density (people/sq mi)	Population Served	Projected Year 2017 Population Change (%)	Projected Population Density	Projected 2017 Population Served
Town of Eatonville	2,012	1,335	2,012	1.6%	1,878	3,230
Region 5	700,820	418	700,820	1.04%	435	729,471

Special Populations

Table 2-2 Special Populations⁷

Jurisdiction	Population	Population 65 Plus	% of Total	Population Under 18	% of Total
Town of Eatonville	2,012	249	12%	632	31%
Region 5	700,820	71,620	10.2%	190,569	27.2%
WA State	5,894,121	662,148	11.2%	1,513,843	25.7%

Infrastructure Summary

General

Table 2-5 Parcel Summary⁸

Jurisdiction	# Parcels	Land Value	Average Land Value	Improved Value	Average Improved Value
Town of Eatonville	1,242	\$102,841,200	\$82,803	\$145,786,900	\$117,381
Region 5	292,666	\$39,054,414,761	\$133,444	\$47,992,756,413	\$163,984.73

Jurisdiction	Total Assessed Value	Average Assessed Value
Town of Eatonville	\$248,628,100	\$200,184
Region 5	\$87,047,171,174	\$297,428

Table 2-6 Housing Summary⁹

Jurisdiction	# Houses	Housing Density	Avg Year Built	Avg Year Built (%)
Town of Eatonville	805	469	<ul style="list-style-type: none"> • >1939: 131 • 1940-1979: 276 • 1980-2000: 417 	<ul style="list-style-type: none"> • >1939: 15.9% • 1940-1979: 33.5% • 1980-2000: 50.7%
Region 5	277,060	165	<ul style="list-style-type: none"> • >1939: 34,857 • 1940-1979: 133,531 • 1980-2000: 108,672 	<ul style="list-style-type: none"> • >1939: 12.6% • 1940-1979: 48.2% • 1980-2000: 39.2%

Jurisdiction Infrastructure

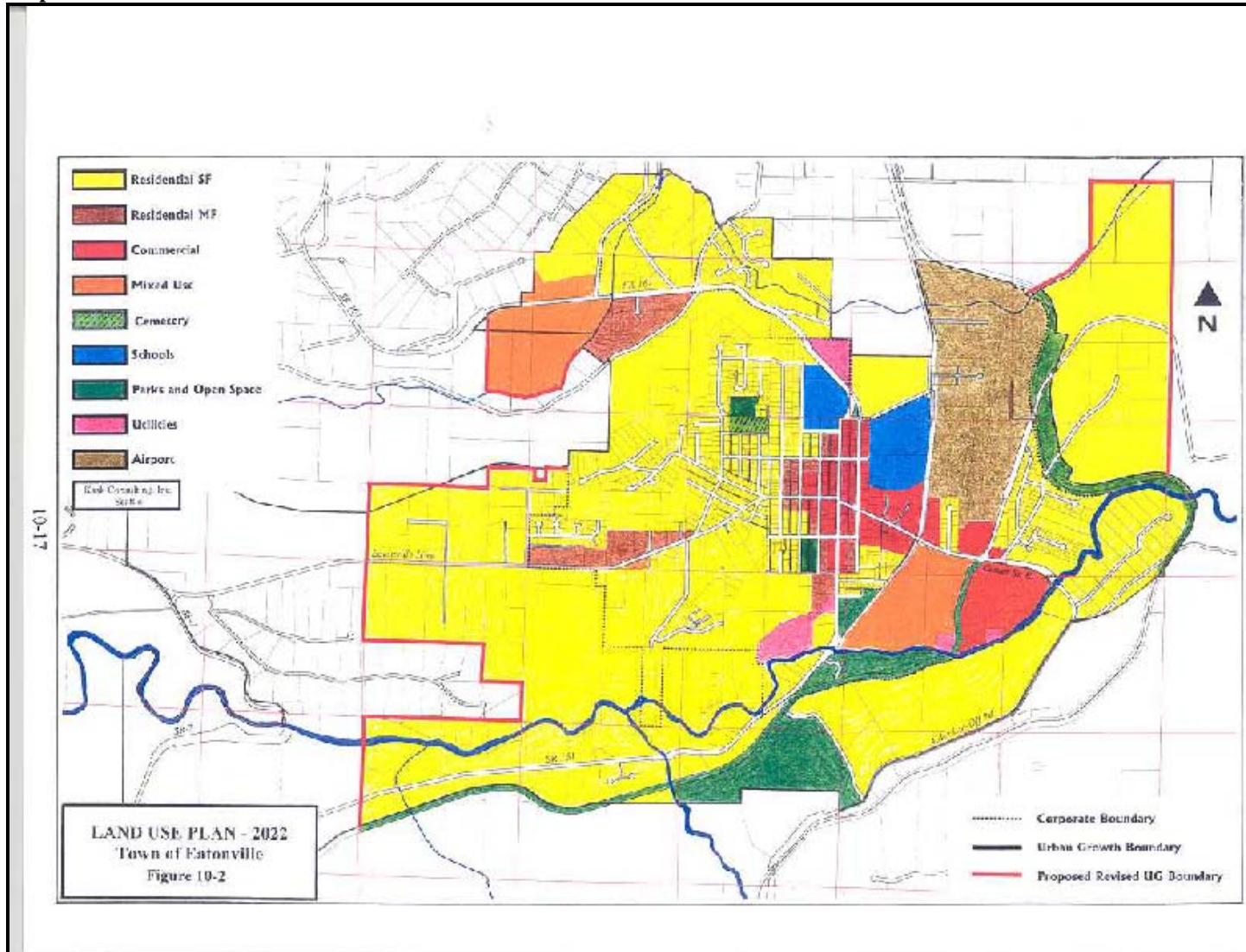
The following table shows the overview of infrastructure owned by the Town of Eatonville. The infrastructure is categorized according to the infrastructure sectors as designated by the Department of Homeland Security. This table is intended as a summary only.

For further details on Department of Homeland Security infrastructure sectors, please see the Process Section 1.

Table 2-7 Owned Infrastructure¹⁰

Total Infrastructure	Emerg. Services	Tele-comm	Transportation	Water	Energy	Government	Commercial	Total Value (\$)
39	2	0	3	13	0	21	0	\$44,002,730

Map 2- 2



Economic Summary

Table 2-8 Fiscal Summary¹¹

Jurisdiction	Operating Costs (per month)	Operating Budgeted Revenues ¹²	Operating Budgeted Expenditures ¹³	Fund Balance as % of Operating Cost	Avg Fund Balance (5 yrs)
Town of Eatonville	Not Available	Not Available	Not Available	Not Available	Not Available

Table 2-9 Employment Profile¹⁴

Employment Category (SIC)	Town of Eatonville	Pierce County
Agriculture, Forestry, Fishing, Mining and Hunting	42	3,126
Construction	71	24,340
FIRES (Finance, Insurance, Real Estate, and Services)	16	18,212
Wholesale Trade	31	13,919
Transportation and Warehousing and Utilities	60	21,555
Manufacturing	85	39,511
Retail	137	39,408
Education, Health and Social Services	202	65,256
Professional, Scientific, Management, Administrative, Waste Management	54	23,095
Public Administration	57	18,363

Table 2-10 Unemployment Rate¹⁵

Jurisdiction	Unemployment Rate
Town of Eatonville	5.4%
Region 5	6.5%
WA State	6.2%

Resource Directory

Regional

- **Town of Eatonville**
<http://www.eatonville-wa.gov/>
- **Pierce County Government**
<http://www.piercecountywa.org/PC/>
- **Pierce County DEM**
<http://www.piercecountywa.org/pc/abtus/ourorg/dem/abtusdem.htm>
- **Pierce County PALS**
<http://www.piercecountywa.org/pc/services/home/property/pals/palsmain.htm>
- **Municipal Research & Services Center of Washington (MRSC)**
<http://www.mrsc.org>

National

- **US Census**
www.census.gov/

Endnotes

¹ Information from a survey completed by the Town.

² Information from Pierce County GIS application, CountyView Pro (7/06).

³ “Population” from Census 2000, Office of Financial Management. It should be noted that current (as of July 2007) population of Town of Eatonville is reported by the Office of Financial Management as 2,380.

⁴ “Projected Population Change (%)” from Pierce County Buildable Lands Report, Sept 2002.

⁵ “Projected Population Density” is based on an assumption of the jurisdiction maintaining the same geographic area and boundaries. It does not consider changes in annexation, district mergers, etc.

⁶ “Projected 2017 Population” from Pierce County Buildable Lands Report, Sept 2002.

⁷ Information from Pierce County GIS application, CountyView Pro projected for 2007.

⁸ Information from Pierce County GIS application, CountyView Pro projected for 2007.

⁹ Information from Census 2000, Office of Financial Management.

¹⁰ Information obtained from Jurisdiction from Infrastructure Matrix.

¹¹ Information not available at the time of publication.

¹² Non-Capital

¹³ Non-Capital

¹⁴ Information from Census 2000, Office of Financial Management.

¹⁵ Information from Census 2000, Office of Financial Management.