

SECTION 2

REGION 5 HAZARD MITIGATION PLAN CITY OF EDGEWOOD PROFILE SECTION

Table of Contents

TABLE OF CONTENTS	1
MISSION STATEMENT	2
SERVICES SUMMARY	3
GEO-POLITICAL SUMMARY	4
POPULATION SUMMARY	6
DEMOGRAPHICS	6
SPECIAL POPULATIONS	6
INFRASTRUCTURE SUMMARY	7
GENERAL	7
JURISDICTION INFRASTRUCTURE	7
ECONOMIC SUMMARY	9
RESOURCE DIRECTORY	10
REGIONAL	10
NATIONAL	10
ENDNOTES	11

Mission Statement

The mission of the City of Edgewood is as follows:

- **Promote a sense of place by requiring quality building and development that is not just compatible with the surrounding environment, but enhances the community spirit.**
- **Promote quality building and development that is compatible with the surrounding environment.**
- **Support a variety of housing opportunities for Edgewood’s diversifying population that are affordable, enhance a safe and livable community, and prepare and protect our families for life in the 21st Century.**
- **Pursue a strong and diverse economy and assure economic development that creates a “Heart” for Edgewood and balances regional objectives, while complementing the unique neighborhood character.**
- **Protect the natural environment and preserve environmentally sensitive areas.**
- **Promote improvements to human services as the community changes and diversifies.**
- **Assure effective and efficient public investment for quality public services, facilities, and utilities.**
- **Balance the transportation needs of the community with regional objectives through improvement of both street and multimodal transportation systems for Edgewood’s present and future population.**
- **Provide for inclusive and meaningful citizen involvement in community planning decisions.**

Services Summary

The City of Edgewood was incorporated in the year 1996.

The jurisdiction provides the following services through their own capabilities:

Table 2-1 City Services¹

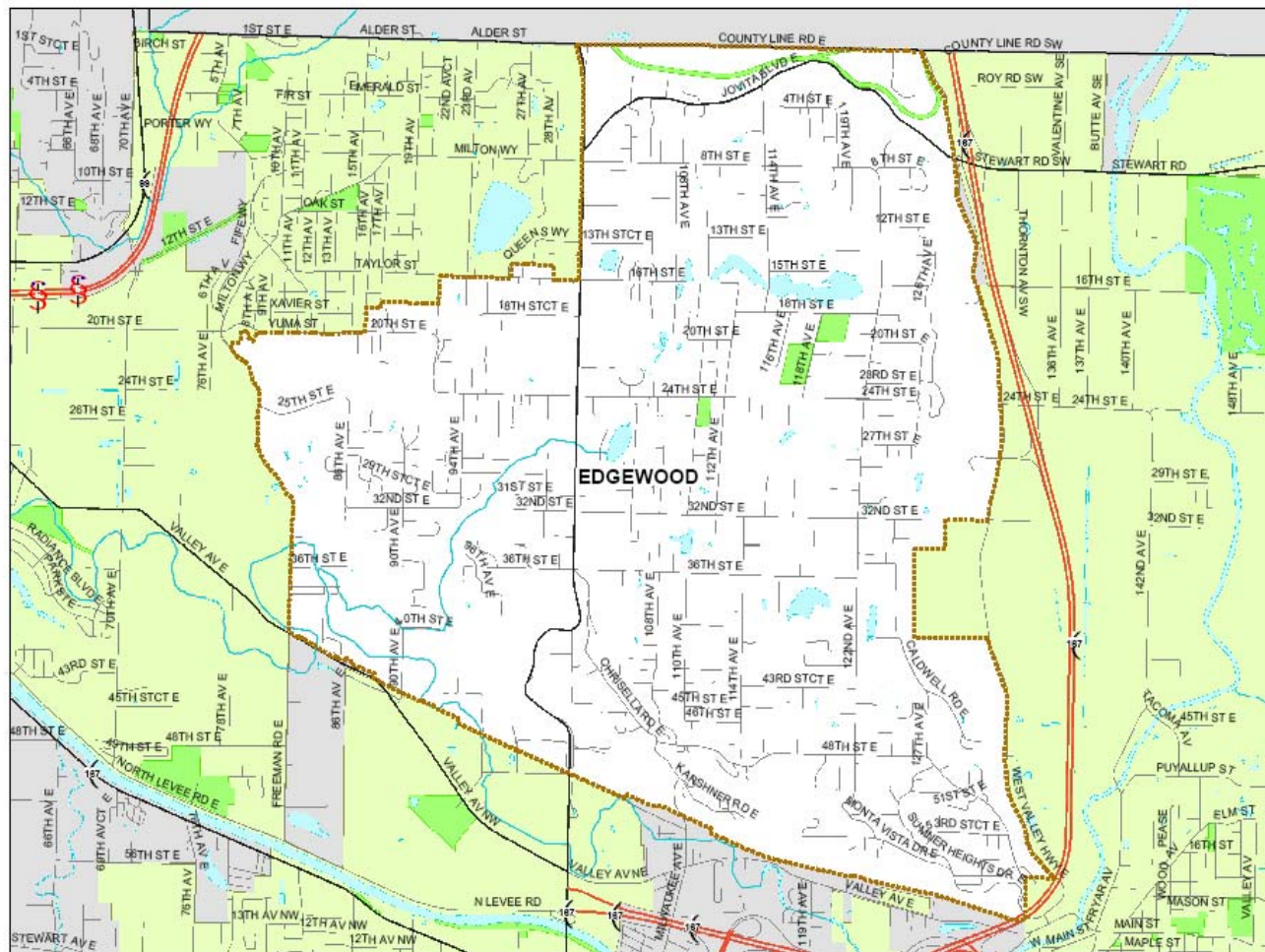
CITY SERVICES			
Service	Yes	Service	Yes
Mayor/City Manager	Yes	Municipal Airport	No
City Attorney	Yes	Municipal Court	No
City Clerk	Yes	Public Works/Improvements	Yes
City Treasurer	Yes	Comprehensive Planning	Yes
Sheriff or Police	Yes	Parking Meter Revenue	No
Parks Commissioners	Yes	Construction and Operation of Boat Harbors, Marinas, Docks, etc.	No
City Council	Yes	Issue Bonds and Levies of General Tax	Yes
License and Tax Fees	Yes	Fire Department/EMS	No
Non-Polluting Power Generation	No	Parking, Off-street Facilities	Yes
Hydroelectric Resources	No	Sanitary Landfill/Refuse Service	No
Radio Communications	No	Sidewalks	Yes
Streets	Yes	Storm Drains	Yes
Waste Water Treatment	No	Streets/Alleys	Yes
Water Utility	No	Parks and Parkways	Yes
Public Transportation Systems	No	Water Pollution Abatement	No
Residential Care Facilities	No	Local Improvement Districts	Yes
Child Care Facilities	No		

Geo-Political Summary

Table 2-2 Geo-Political Summary²

Jurisdiction	Area (sq mi)	Elevation Range (ft)	Major Water Features	Regional Partners	
				Shared Borders	Land Use Authorities
City of Edgewood	7.76	40-480	<ul style="list-style-type: none"> • Puyallup Watershed • 4-Hylebos Basin • 15-Lower White River Basin 	<ul style="list-style-type: none"> • Fife • Milton • Pacific • Sumner • Puyallup • Unincorporated Pierce County • Unincorporated King County • Puyallup Tribe 	<ul style="list-style-type: none"> • Edgewood • Fife • Milton • Pacific • Sumner • Puyallup • Unincorporated Pierce County • Unincorporated King County • Puyallup Tribe

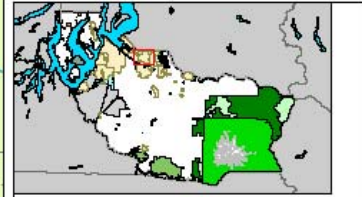
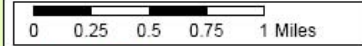
CITY OF EDGEWOOD - BASEMAP



LEGEND

- EDGEWOOD
- PARKS/OPEN SPACE
- OTHER CITIES
- WATER BODY
- RIVERS/STREAMS
- PIERCE COUNTY BOUNDARY
- LIMITED ACCESS HIGHWAY
- MAJOR ROAD
- ROADS

The map features are approximate and are intended only to provide an indication of said feature. Additional areas that have not been depicted may be present. This is not a survey. The County assumes no liability for variations ascertained by actual survey. ALL DATA IS EXPRESSLY PROVIDED AS IS AND WITH ALL FAULTS. The County makes no warranty of fitness for a particular purpose.



Oct 11, 2009



Population Summary

Demographics

Table 2-1 Population^{3, 4, 5, 6}

Jurisdiction	Population	Population Density (people/sq mi)	Population Served	Projected 2017 Population Change (%)	Projected Population Density	Projected Population Served
City of Edgewood	9,061	1,167	9,061	1.85%	2,015	16,847
Region 5	700,820	418	700,820	1.04%	435	729,471

Special Populations

Table 2-2 Special Populations⁷

Jurisdiction	Population	Population 65 Plus	% of Total	Population Under 18	% of Total
City of Edgewood	9,061	933	10%	2,238	25%
Region 5	700,820	71,620	10.2%	190,569	27.2%
WA State	5,894,121	662,148	11.2%	1,513,843	25.7%

Infrastructure Summary

General

Table 2-5 Parcel Summary⁸

Jurisdiction	# Parcels	Land Value	Average Land Value	Improved Value	Average Improved Value
City of Edgewood	4,202	\$772,317,188	\$183,798	\$647,398,600	\$154,069
Region 5	292,666	\$39,054,414,761	\$133,444	\$47,992,756,413	\$163,985

Jurisdiction	Total Assessed Value	Average Assessed Value
City of Edgewood	\$1,419,715,788	\$337,867
Region 5	\$87,047,171,174	\$297,428

Table 2-6 Housing Summary⁹

Jurisdiction	# Houses	Housing Density	Avg Year Built	Avg Year Built (%)
City of Edgewood	3,562	426	<ul style="list-style-type: none"> • >1939:412 • 1940-1979: 2,222 • 1980-2000: 917 	<ul style="list-style-type: none"> • >1939: 11.6% • 1940-1979: 62.6% • 1980-2000: 25.8%
Region 5	277,060	165	<ul style="list-style-type: none"> • >1939: 34,857 • 1940-1979: 133,531 • 1980-2000: 108,672 	<ul style="list-style-type: none"> • >1939: 12.6% • 1940-1979: 48.2% • 1980-2000: 39.2%

Jurisdiction Infrastructure

The following table shows the overview of infrastructure owned by the City of Edgewood. The infrastructure is categorized according to the infrastructure sectors as designated by the Department of Homeland Security. This chart is intended as a summary only.

For further details on Department of Homeland Security infrastructure sectors, please see the Process Section 1.

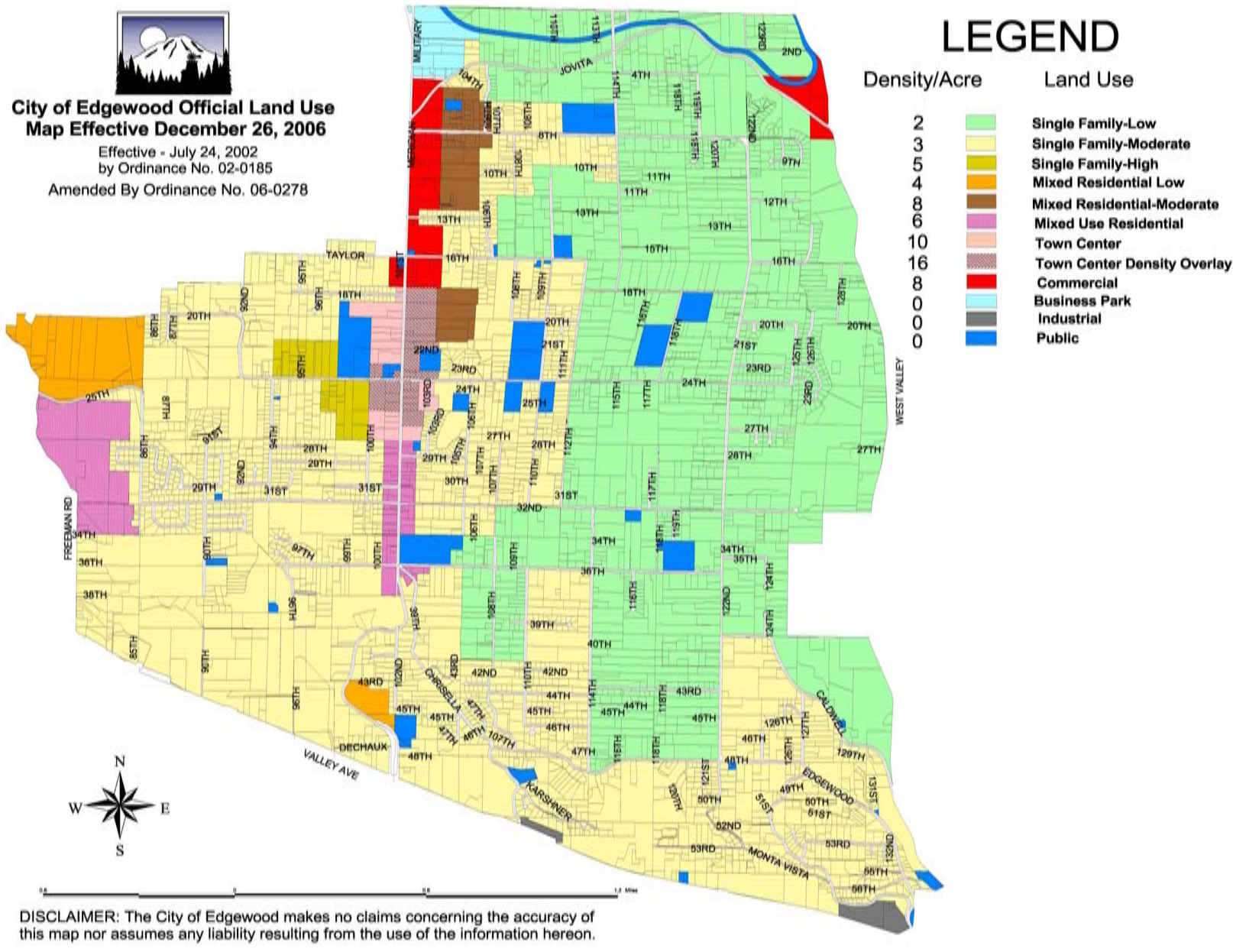
Table 2-7 Owned Infrastructure¹⁰

Total Infrastructure	Emerg. Services	Tele-comm	Transportation	Water	Energy	Government	Commercial	Total Value (\$)
13	0	0	0	0	0	13	0	\$657,900



City of Edgewood Official Land Use Map Effective December 26, 2006

Effective - July 24, 2002
 by Ordinance No. 02-0185
 Amended By Ordinance No. 06-0278



Economic Summary

Table 2-8 Fiscal Summary¹¹

Jurisdiction	Operating Costs (per month)	Operating Budgeted Revenues ¹²	Operating Budgeted Expenditures ¹³	Fund Balance as % of Operating Cost	Avg Fund Balance (5 yrs)
City of Edgewood	\$261,728	\$3,128,835	\$3,140,730	85%	\$3,897,071

Table 2-9 Employment Profile¹⁴

Employment Category (SIC)	City of Edgewood	Pierce County
Agriculture, Forestry, Fishing, Mining and Hunting	72	3,126
Construction	304	24,340
FIRES (Finance, Insurance, Real Estate, and Services)	170	18,212
Wholesale Trade	222	13,919
Transportation and Warehousing and Utilities	363	21,555
Manufacturing	738	39,511
Retail	560	39,408
Education, Health and Social Services	763	65,256
Professional, Scientific, Management, Administrative, Waste Management	344	23,095
Public Administration	273	18,363

Table 2-10 Unemployment Rate¹⁵

Jurisdiction	Unemployment Rate
City of Edgewood	3.9%
Region 5	6.5%
WA State	6.2%

Resource Directory

Regional

- **City of Edgewood**
<http://www.cityofedgewood.org>
- **Pierce County Government**
<http://www.piercecountywa.org/PC/>
- **Pierce County DEM**
<http://www.piercecountywa.org/pc/abtus/ourorg/dem/abtusdem.htm>
- **Pierce County PALS**
<http://www.piercecountywa.org/pc/services/home/property/pals/palsmain.htm>
- **Municipal Research & Services Center of Washington (MRSC)**
<http://www.mrsc.org>

National

- **US Census**
www.census.gov/

Endnotes

¹ Information from a survey compiled by the City.

² Information from Pierce County GIS application, CountyView Pro (7/06).

³ “Population” from Census 2000, Office of Financial Management. It should be noted that current (as of July 2007) population of City of Edgewood is reported by the Office of Financial Management as 9,560.

⁴ “Projected Population Change (%)” from Pierce County Buildable Lands Report, Sept 2002.

⁵ “Projected Population Density” is based on an assumption of the jurisdiction maintaining the same geographic area and boundaries. It does not consider changes in annexation, district mergers, etc.

⁶ “Projected 2017 Population” from Pierce County Buildable Lands Report, Sept 2002.

⁷ Information from Pierce County GIS application, CountyView Pro projected for 2007.

⁸ Information from Pierce County GIS application, CountyView Pro projected for 2007.

⁹ Information from Census 2000, Office of Financial Management.

¹⁰ Information obtained from Jurisdiction from Infrastructure Matrix.

¹¹ Information obtained from the Budget of the jurisdiction.

¹² Non-Capital

¹³ Non-Capital

¹⁴ Information from Census 2000, Office of Financial Management.

¹⁵ Information from Census 2000, Office of Financial Management.