

SECTION 2

REGION 5 HAZARD MITIGATION PLAN CITY OF FIFE PROFILE SECTION

Table of Contents

TABLE OF CONTENTS	1
MISSION STATEMENT	2
SERVICES SUMMARY	2
GEO-POLITICAL SUMMARY	3
POPULATION SUMMARY	5
DEMOGRAPHICS	5
SPECIAL POPULATIONS	5
INFRASTRUCTURE SUMMARY	6
GENERAL	6
JURISDICTION INFRASTRUCTURE	7
ECONOMIC SUMMARY	9
RESOURCE DIRECTORY	10
REGIONAL	10
NATIONAL	10
ENDNOTES	11

Mission Statement

The mission of the City of Fife is as follows:

Fife will be a city where there is balance between residential, commercial, and industrial growth and a city with a wholesome, restful, neighborhood-like atmosphere.

Services Summary

The City of Fife was incorporated in the year 1957.

The jurisdiction provides the following services through their own capabilities:

Table 2-1 City Services¹

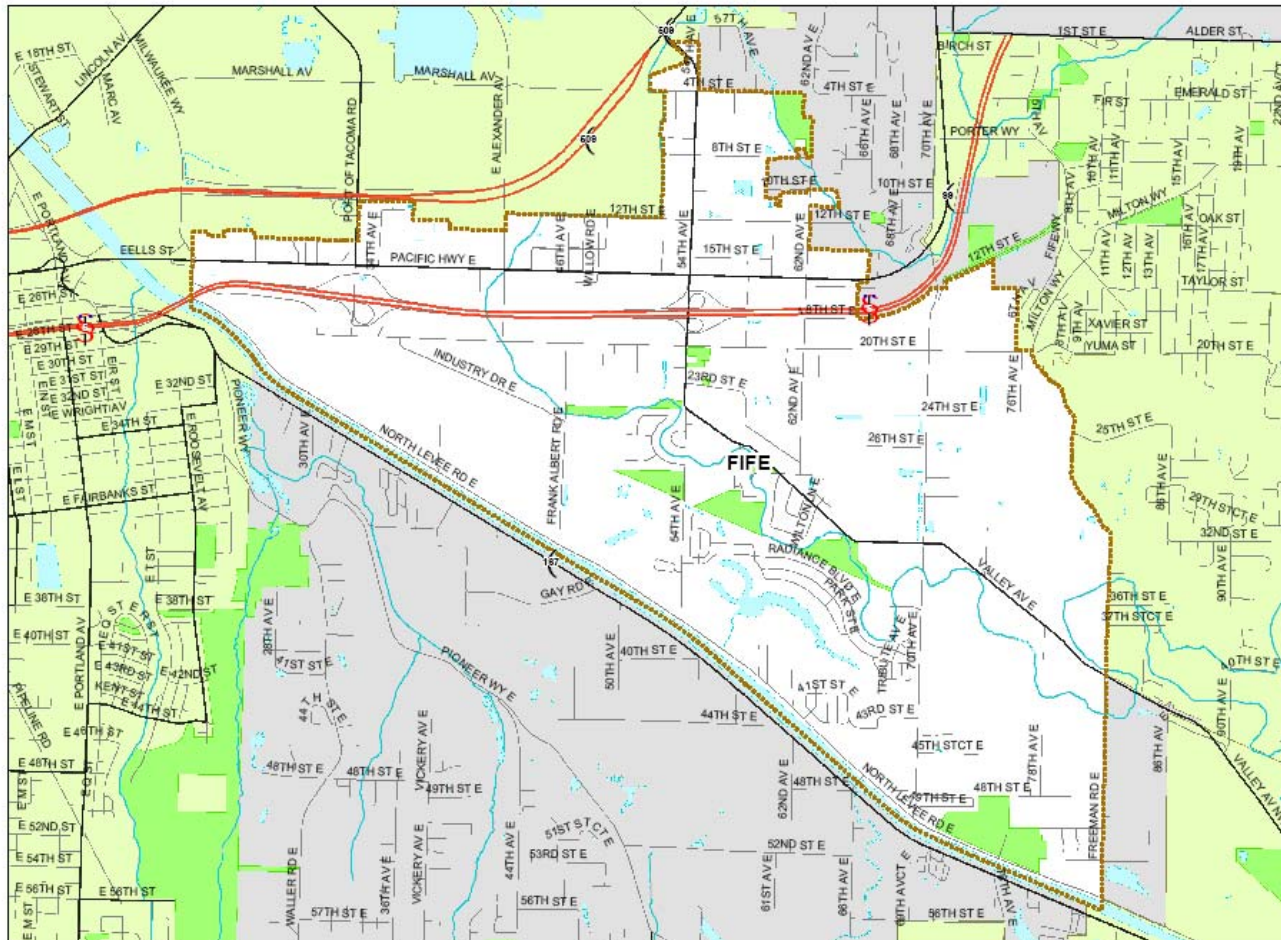
CITY SERVICES			
Service	Yes	Service	Yes
Mayor/City Manager	Yes	Municipal Airport	No
City Attorney	Yes	Municipal Court	Yes
City Clerk	Yes	Public Works/Improvements	Yes
City Treasurer	Yes	Comprehensive Planning	Yes
Sheriff or Police	Yes	Parking Meter Revenue	No
Parks Commissioners	Yes	Construction and Operation of Boat Harbors, Marinas, Docks, etc.	No
City Council	Yes	Issue Bonds and Levies of General Tax	Yes
License and Tax Fees	Yes	Fire Department/EMS	No
Non-Polluting Power Generation	No	Parking, Off-street Facilities	Yes
Hydroelectric Resources	No	Sanitary Landfill/Refuse Service	No
Radio Communications	No	Sidewalks	Yes
Streets	Yes	Storm Drains	Yes
Waste Water Treatment	No	Streets/Alleys	Yes
Water Utility	Yes	Parks and Parkways	No
Public Transportation Systems	No	Water Pollution Abatement	No
Residential Care Facilities	No	Local Improvement Districts	Yes
Child Care Facilities	No		

Geo-Political Summary

Table 2-2 Geo-Political Summary²

Jurisdiction	Area (sq mi)	Elevation Range (ft)	Major Water Features	Regional Partners	
				Shared Borders	Land Use Authorities
City of Fife	4.66	20-220	<ul style="list-style-type: none"> • Puyallup Watershed • 3-Clear/Clarks Creek Basin • 4-Hylebos Basin • 23-Mid Puyallup River Basin 	<ul style="list-style-type: none"> • Tacoma • Edgewood • Milton • Puyallup • Unincorporated Pierce County • Puyallup Tribe 	<ul style="list-style-type: none"> • Fife • Tacoma • Edgewood • Milton • Puyallup • Unincorporated Pierce County • Puyallup Tribe • WA DOT

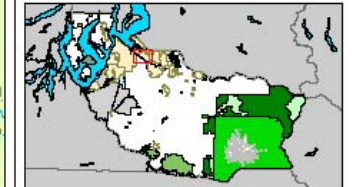
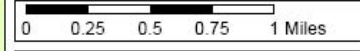
CITY OF FIFE - BASEMAP



LEGEND

- FIFE
- PARKS/OPEN SPACE
- OTHER CITIES
- WATER BODY
- RIVERS/STREAMS
- PIERCE COUNTY BOUNDARY
- LIMITED ACCESS HIGHWAY
- MAJOR ROAD
- ROADS

The map features are approximate and are intended only to provide an indication of said feature. Additional areas that have not been mapped may be present. This is not a survey. The County assumes no liability for variations ascertained by actual survey. ALL DATA IS EXPRESSLY PROVIDED AS IS AND WITH ALL FAULTS. The County makes no warranty of fitness for a particular purpose.



Pierce County
Emergency Management

Population Summary

Demographics

Table 2-1 Population^{3, 4, 5, 6}

Jurisdiction	Population	Population Density (people/sq mi)	Population Served	Projected Year 2017 Population Change (%)	Projected Population Density	Projected 2017 Population Served
City of Fife	4,839	1,039	4,839	1.27%	1,366	7,802
Region 5	700,820	418	700,820	1.04%	435	729,471

Special Populations

Table 2-2 Special Populations⁷

Jurisdiction	Population	Population 65 Plus	% of Total	Population Under 18	% of Total
City of Fife	4,839	373	8%	1,245	25.7%
Region 5	700,820	71,620	10.2%	190,569	27.2%
WA State	5,894,121	662,148	11.2%	1,513,843	25.7%

Infrastructure Summary

General

Table 2-3 Developed Land (Cities, Towns)⁸

Jurisdiction	Area (sq mi)	Developed Area (sq mi)	% Area Developed	Area Buildable (sq mi)	% Area 'Buildable'	% of Buildable Land Developed
City of Fife	5.66	1.78	31.8	2.47	43.7	

Table 2-4 Undeveloped Land (Cities, Towns)⁸

Jurisdiction	UGA available (sq mi)	Buildable Area in UGA (sq mi)	Total Avail Land—UGA Buildable + buildable (sq mi)	Proportion of Land undeveloped total (% sq mi)
City of Fife	5.66	2.47	2.47	43.7

Table 2-5 Parcel Summary⁹

Jurisdiction	# Parcels	Land Value	Average Land Value	Improvement Value Total (\$)	Avg Improvement Value (\$/parcel)
City of Fife	2,877	\$1,010,665,619	\$351,291	\$1,048,342,000	\$364,387
Region 5	292,666	\$39,054,414,761	\$133,444	\$47,992,756,413	\$163,985

Jurisdiction	Total Assessed Value	Average Assessed Value
City of Fife	\$2,059,007,619	\$715,679
Region 5	\$87,047,171,174	\$297,428

Table 2-6 Housing Summary¹⁰

Jurisdiction	# Houses	Housing Density	Avg Year Built	Avg Year Built (%)
City of Fife	2,244	401.1	<ul style="list-style-type: none"> • >1939: 158 • 1940-1979: 994 • 1980-2000: 1,092 	<ul style="list-style-type: none"> • >1939: 7.0% • 1940-1979: 44.3% • 1980-2000: 48.7%
Region 5	277,060	165	<ul style="list-style-type: none"> • >1939: 34,857 • 1940-1979: 133,531 • 1980-2000: 108,672 	<ul style="list-style-type: none"> • >1939: 12.6% • 1940-1979: 48.2% • 1980-2000: 39.2%

Jurisdiction Infrastructure

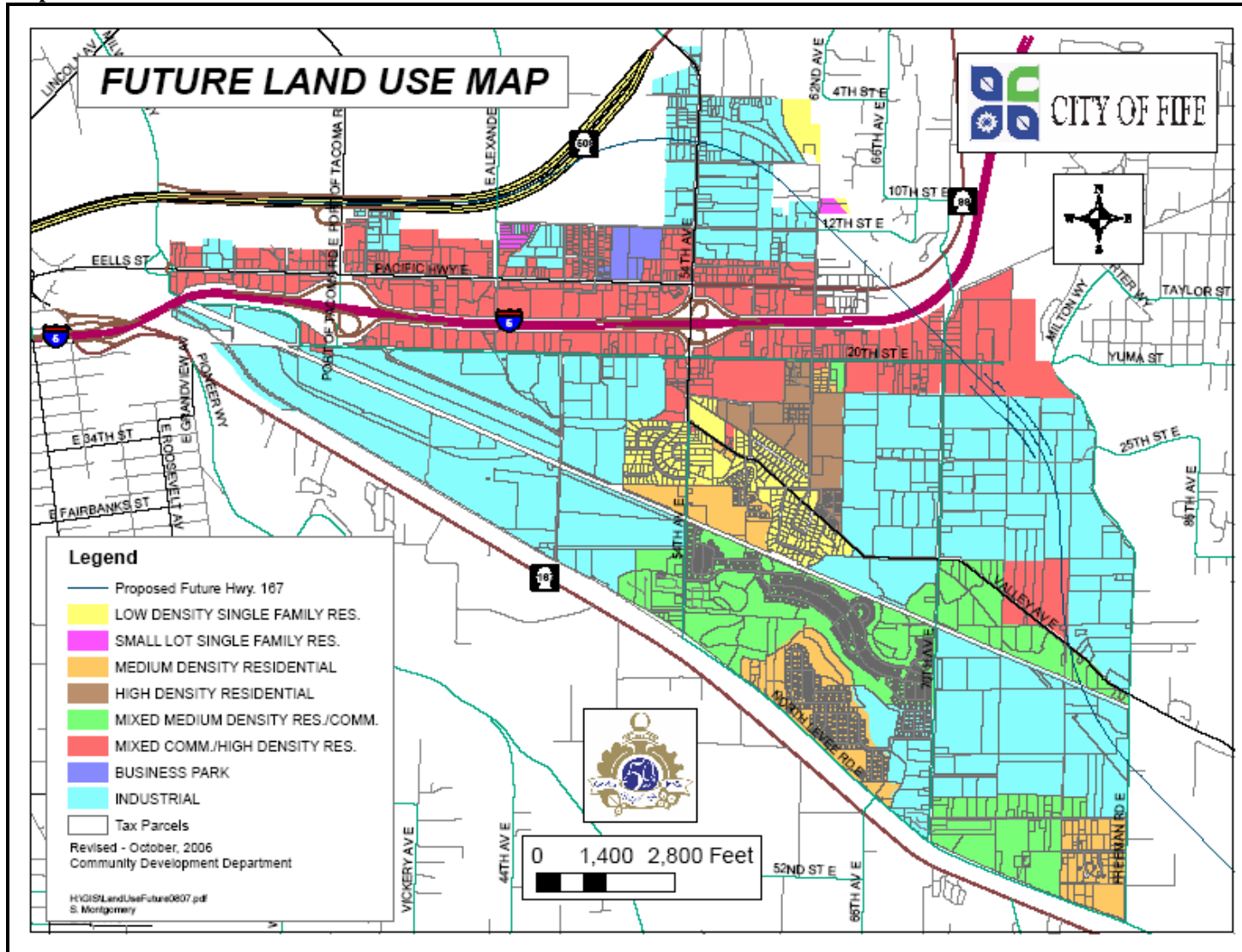
The following table shows the overview of infrastructure owned by the City of Fife. The infrastructure is categorized according to the infrastructure sectors as designated by the Department of Homeland Security. This chart is intended as a summary only.

For further details on Department of Homeland Security infrastructure sectors, please see the Process Section 1.

Table 2-9 Owned Infrastructure¹¹

Total Infrastructure	Emerg. Services	Tele-comm	Transportation	Water	Energy	Government	Commercial	Total Value (\$)
47	0	0	6	21	0	20	0	\$9,427,887

Map 2- 2



Economic Summary

Table 2-10 Fiscal Summary¹²

Jurisdiction	Operating Costs (per month)	Operating Budgeted Revenues ¹³	Operating Budgeted Expenditures ¹⁴	Fund Balance as % of Operating Cost	Avg Fund Balance (5 yrs)
City of Fife	Ave-\$1,080,000 (General Fund)	\$16,900,000 (Annual-General Fund)	\$13,000,000 (Annual-General Fund)	17%	\$1,200,000

Table 2-11 Employment Profile¹⁵

Employment Category (SIC)	City of Fife	Pierce County
Agriculture, Forestry, Fishing, Mining and Hunting	43	3,126
Construction	186	24,340
FIRES (Finance, Insurance, Real Estate, and Services)	152	18,212
Wholesale Trade	184	13,919
Transportation and Warehousing and Utilities	164	21,555
Manufacturing	406	39,511
Retail	313	39,408
Education, Health and Social Services	260	65,256
Professional, Scientific, Management, Administrative, Waste Management	162	23,095
Public Administration	79	18,363

Table 2-12 Unemployment Rate

Jurisdiction	Unemployment Rate
City of Fife	6.0%
Region 5	6.5%
WA State	6.2%

Resource Directory

Regional

- **City of Fife**
<http://www.cityoffife.org>
- **Pierce County Government**
<http://www.piercecountywa.org/PC/>
- **Pierce County DEM**
<http://www.piercecountywa.org/pc/abtus/ourorg/dem/abtusdem.htm>
- **Pierce County PALS**
<http://www.piercecountywa.org/pc/services/home/property/pals/palsmain.htm>
- **Municipal Research & Services Center of Washington (MRSC)**
<http://www.mrsc.org>

National

- **US Census**
www.census.gov/

Endnotes

¹ Information from a survey compiled by the City.

² Information from Pierce County GIS application, CountyView Pro (7/06).

³ “Population” information from 2006 City of Fife Comprehensive Plan, OFM 2006 Population Local Review Worksheet. It should be noted that current (as of July 2007) population for the City of Fife is reported by the Office of Financial Management as 7,180.

⁴ “Projected Population Change (%)” from Pierce County Buildable Lands Report, Sept 2002.

⁵ “Projected Population Density” is based on an assumption of the jurisdiction maintaining the same geographic area and boundaries. It does not consider changes in annexation, district mergers, etc.

⁶ “Projected 2017 Population” from Pierce County Buildable Lands Report, Sept 2002.

⁷ OFM 2006 Population Local Review Worksheet.

⁸ 2006 City of Fife Comprehensive Plan.

⁹ Pierce County Assessor-Treasurer, Analytical Survey Inc. July 22,2006.

¹⁰ 2006 City of Fife Comprehensive Plan.

¹¹ Information obtained from Jurisdiction from Infrastructure Matrix.

¹² Information provided by Finance Director, Treasurer, City of Fife.

¹³ Non-Capital

¹⁴ Non-Capital

¹⁵ Information from Census 2000, Office of Financial Management.