

SECTION 2

REGION 5 HAZARD MITIGATION PLAN CITY OF TACOMA PROFILE SECTION

Table of Contents

TABLE OF CONTENTS	1
MISSION STATEMENT	2
SERVICES SUMMARY	2
GEO-POLITICAL SUMMARY	3
POPULATION SUMMARY	5
DEMOGRAPHICS	5
SPECIAL POPULATIONS	5
INFRASTRUCTURE SUMMARY	6
GENERAL	6
JURISDICTION INFRASTRUCTURE	6
ECONOMIC SUMMARY	8
RESOURCE DIRECTORY	9
REGIONAL	9
NATIONAL	9
ENDNOTES	10

Mission Statement

The Mission of the City of Tacoma is as follows:

We provide high-quality, innovative and cost-effective municipal services that enhance the lives of our citizens and the vitality of our neighborhoods and businesses through teamwork, integrity and continuous improvement in partnership with our community.

The Vision of the City of Tacoma is as follows:

The City of Tacoma is recognized as a livable and progressive international city, regarded for the richness of its multi-cultural population and its natural setting.

Services Summary

The City of Tacoma was incorporated in 1884.

The City provides the following services through their own capabilities:

Table 2-1 City Services¹

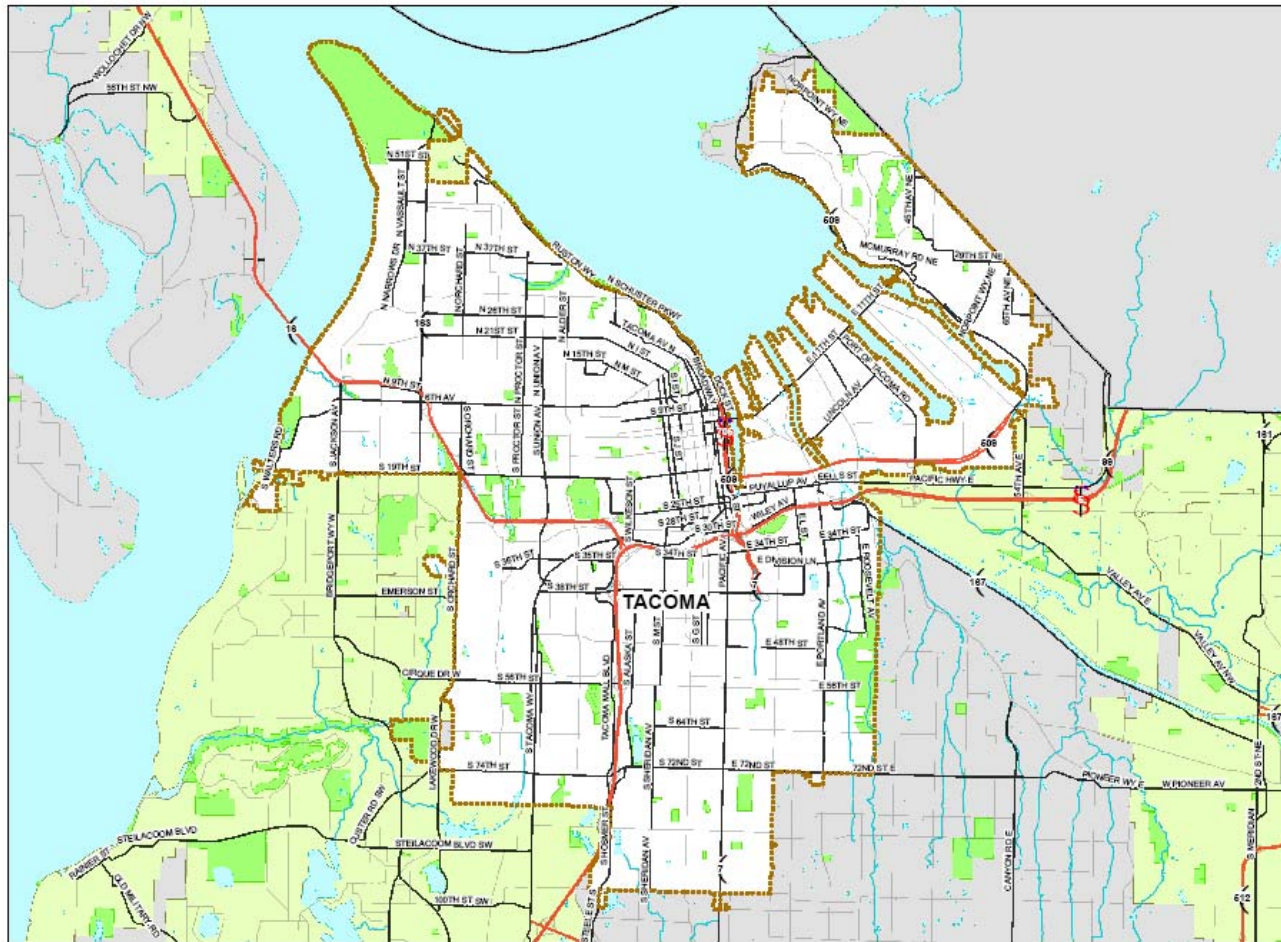
CITY SERVICES			
Service	Yes	Service	Yes
Mayor/City Manager	Yes	Municipal Airport	Yes
City Attorney	Yes	Municipal Court	Yes
City Clerk	Yes	Public Works/Improvements	Yes
City Treasurer	Yes	Comprehensive Planning	Yes
Sheriff or Police	Yes	Parking Meter Revenue	Yes
Parks Commissioners	No	Construction and Operation of Boat Harbors, Marinas, Docks, etc.	No
City Council	Yes	Issue Bonds and Levies of General Tax	Yes
License and Tax Fees	Yes	Fire Department/EMS	Yes
Non-Polluting Power Generation	Yes	Parking, Off-street Facilities	Yes
Hydroelectric Resources	Yes	Sanitary Landfill/Refuse Service	Yes
Radio Communications	Yes	Sidewalks	Yes
Streets	Yes	Storm Drains	Yes
Waste Water Treatment	Yes	Streets/Alleys	Yes
Water Utility	Yes	Parks and Parkways	No
Public Transportation Systems	No	Water Pollution Abatement	Yes
Residential Care Facilities	No	Local Improvement Districts	Yes
Child Care Facilities	No		

Geo-Political Summary

Table 2-1 Geo-Political Summary²

Jurisdiction	Area (sq mi)	Elevation Range (ft.)	Major Water Features	Regional Partners	
				Shared Borders	Land Use Authorities
City of Tacoma	36.91	0-500	<ul style="list-style-type: none"> • Puyallup Watershed • 1-Browns Dash Point Basin • 3-Clear/Clarks Creek Basin • 4-Hylebos Basin • Chambers Clover Watershed • 2-Chambers Bay Basin • 6-Clover Creek/Steilacoom Basin • 18-Tacoma West Basin 	<ul style="list-style-type: none"> • University Place • Fircrest • Lakewood • Ruston • Fife • Unincorporated Pierce County • Federal Way (KC) • Unincorporated King County • Puyallup Tribe 	<ul style="list-style-type: none"> • Tacoma • University Place • Fircrest • Lakewood • Ruston • Fife • Unincorporated Pierce County • Federal Way (KC) • Unincorporated King County • Puyallup Tribe

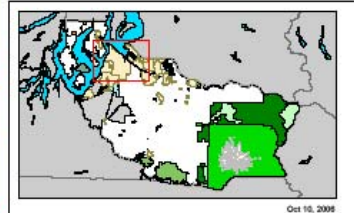
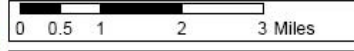
CITY OF TACOMA - BASEMAP



LEGEND

- TACOMA
- PARKS/OPEN SPACE
- OTHER CITIES
- WATER BODY
- RIVERS/STREAMS
- PIERCE COUNTY BOUNDARY
- LIMITED ACCESS HIGHWAY
- MAJOR ROAD
- ROADS

The map features are approximate and are intended only to provide an indication of said feature. Additional areas that have not been mapped may be present. This is not a survey. The County assumes no liability for variations ascertained by actual survey. ALL DATA IS EXPRESSLY PROVIDED AS IS AND WITH ALL FAULTS. The County makes no warranty of these for a particular purpose.



Population Summary

Demographics

Table 2-2 Population^{3, 4, 5, 6}

Jurisdiction	Population	Population Density (people/sq mi)	Population Served	Projected Year 2017 Population Change (%)	Projected Population Density	Projected 2017 Population Served
City of Tacoma	193,570	5,244	193,570	1.28%	5,014	247,700
Region 5	700,820	418	700,820	1.04%	435	729,471

Special Populations

Table 2-3 Special Populations⁷

Jurisdiction	Population	Population 65 Plus	% of Total	Population Under 18	% of Total
City of Tacoma	193,570	22,993	12%	49,899	25.7%
Region 5	700,820	71,620	10.2%	190,569	27.2%
WA State	5,894,121	662,148	11.2%	1,513,843	25.7%

Infrastructure Summary

General

Table 2-5 Parcel Summary⁸

Jurisdiction	# Parcels	Land Value	Average Land Value	Improved Value	Average Improved Value
City of Tacoma	70,358	\$10,697,414,265	\$152,043	\$13,959,047,355	\$198,400
Region 5	292,666	\$39,054,414,761	\$133,444	\$47,992,756,413	\$163,985

Jurisdiction	Total Assessed Value	Average Assessed Value
City of Tacoma	\$24,656,461,620	\$350,443
Region 5	\$87,047,171,174	\$297,428

Table 2-6 Housing Summary⁹

Jurisdiction	# Houses	Housing Density	Avg Year Built	Avg Year Built (%)
City of Tacoma	81,102	1,642	<ul style="list-style-type: none"> • >1939: 22,836 • 1940-1979: 39,805 • 1980-2000: 18,396 	<ul style="list-style-type: none"> • >1939: 28.2% • 1940-1979: 49.2% • 1980-2000: 22.7%
Region 5	277,060	165	<ul style="list-style-type: none"> • >1939: 34,857 • 1940-1979: 133,531 • 1980-2000: 108,672 	<ul style="list-style-type: none"> • >1939: 12.6% • 1940-1979: 48.2% • 1980-2000: 39.2%

Jurisdiction Infrastructure

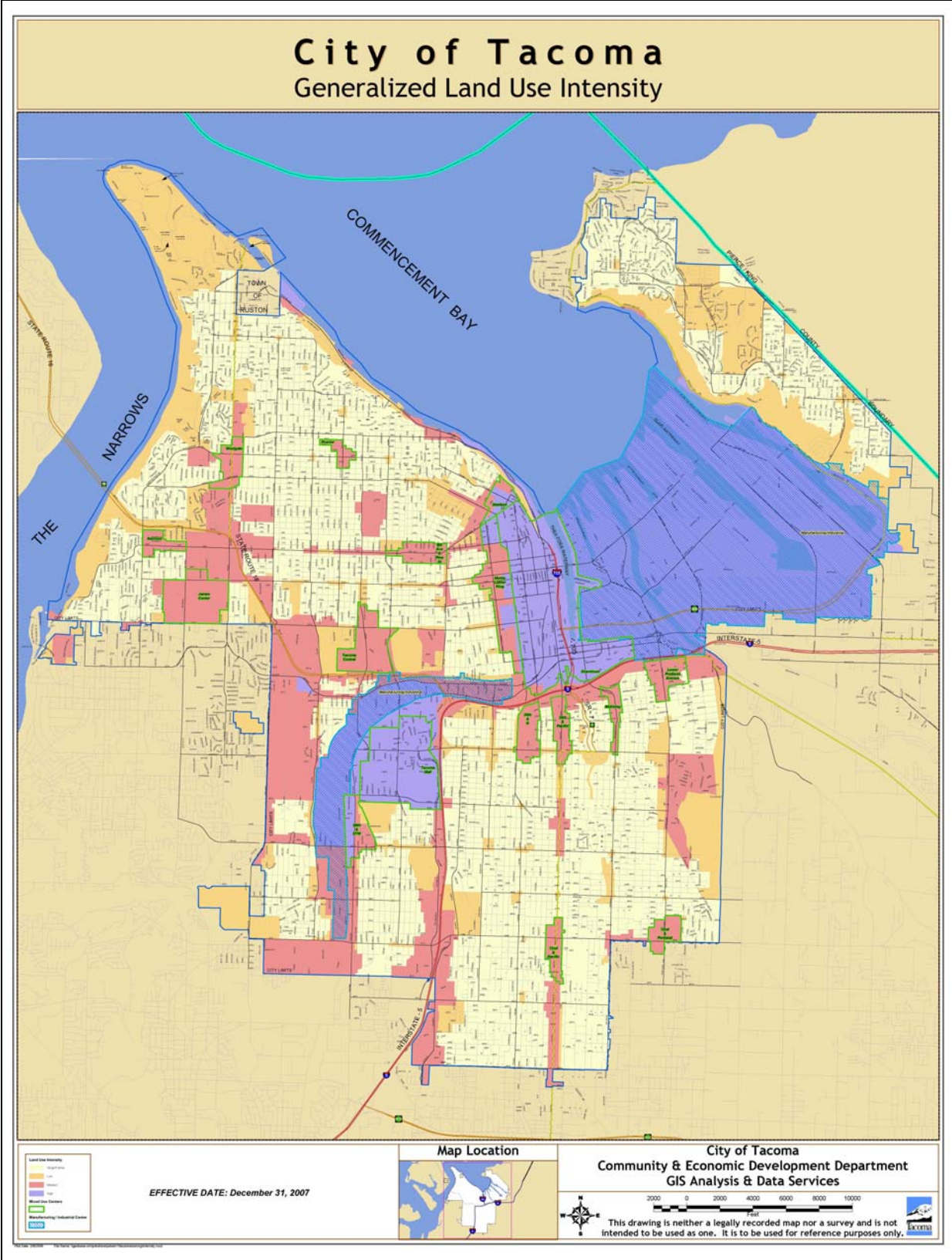
The following table shows the overview of infrastructure owned by the City of Tacoma. The infrastructure is categorized according to the infrastructure sectors as designated by the Department of Homeland Security. This table is intended as a summary only.

For further details on Department of Homeland Security infrastructure sectors, please see the Process Section 1.

Table 2-7 Owned Infrastructure¹⁰

Total Infrastructure	Emerg. Services	Tele-comm	Transportation	Water	Energy	Government	Commercial	Total Value (\$)
366	32	11	51	170	78	24	0	\$704,693,330

Map 2-2



Economic Summary

Table 2-8 Fiscal Summary¹¹

Jurisdiction	Operating Costs (per month)	Operating Budgeted Revenues ¹²	Operating Budgeted Expenditures ¹³	Fund Balance as % of Operating Cost	Avg Fund Balance (5 yrs)
City of Tacoma	Not Available	Not Available	Not Available	Not Available	Not Available

Table 2-9 Employment Profile¹⁴

Employment Category (SIC)	City of Tacoma	Pierce County
Agriculture, Forestry, Fishing, Mining and Hunting	804	3,126
Construction	5,476	24,340
FIRES (Finance, Insurance, Real Estate, and Services)	4,992	18,212
Wholesale Trade	3,550	13,919
Transportation and Warehousing and Utilities	5,587	21,555
Manufacturing	10,830	39,511
Retail	10,289	39,408
Education, Health and Social Services	18,465	65,256
Professional, Scientific, Management, Administrative, Waste Management	7,062	23,095
Public Administration	4,905	18,363

Table 2-10 Unemployment Rate¹⁵

Jurisdiction	Unemployment Rate
City of Tacoma	7.8%
Region 5	6.5%
WA State	6.2%

Resource Directory

Regional

- **City of Tacoma**
<http://www.cityoftacoma.org>
- **Pierce County Government**
<http://www.piercecountywa.org/PC/>
- **Pierce County DEM**
<http://www.piercecountywa.org/pc/abtus/ourorg/dem/abtusdem.htm>
- **Pierce County PALS**
<http://www.piercecountywa.org/pc/services/home/property/pals/palsmain.htm>
- **Municipal Research & Services Center of Washington (MRSC)**
<http://www.mrsc.org>

National

- **US Census**
www.census.gov/

Endnotes

¹ Information from survey completed by the City.

² Information from Pierce County GIS application, CountyView Pro (7/06).

³ “Population” from Census 2000, Office of Financial Management. It should be noted that current (as of July 2007) population of City of Tacoma is reported by the Office of Financial Management as 201,700.

⁴ “Projected Population Change (%)” from Pierce County Buildable Lands Report, Sept 2002.

⁵ “Projected Population Density” is based on an assumption of the jurisdiction maintaining the same geographic area and boundaries. It does not consider changes in annexation, district mergers, etc.

⁶ “Projected 2017 Population” from Pierce County Buildable Lands Report, Sept 2002.

⁷ Information from Pierce County GIS application, CountyView Pro projected for 2007.

⁸ Information from Pierce County GIS application, CountyView Pro projected for 2007.

⁹ Information from Census 2000, Office of Financial Management.

¹⁰ Information obtained from Jurisdiction from Infrastructure Matrix.

¹¹ Information not available at the time of publication.

¹² Non-Capital

¹³ Non-Capital

¹⁴ Information from Census 2000, Office of Financial Management.

¹⁵ Information from Census 2000, Office of Financial Management.