

## SECTION 2

# REGION 5 HAZARD MITIGATION PLAN SOUTH PIERCE FIRE & RESCUE PROFILE SECTION

## Table of Contents

TABLE OF CONTENTS .....	1
MISSION STATEMENT .....	2
SERVICES SUMMARY .....	2
GEO-POLITICAL SUMMARY .....	3
POPULATION SUMMARY .....	5
DEMOGRAPHICS .....	5
SPECIAL POPULATIONS .....	5
INFRASTRUCTURE SUMMARY .....	6
GENERAL .....	6
JURISDICTION INFRASTRUCTURE .....	6
ECONOMIC SUMMARY .....	7
RESOURCE DIRECTORY .....	8
REGIONAL .....	8
NATIONAL .....	8
ENDNOTES .....	9

# Mission Statement

The mission of the South Pierce Fire & Rescue is as follows:

**South Pierce Fire & Rescue is dedicated to providing a consistent and timely customer based emergency service delivery system, while maintaining responsible control of department financial resources.**

**Our emphasis will be on quality fire protection, compassionate emergency medical services and public education. We will safely accomplish this with our team of well-trained personnel.**

# Services Summary

The South Pierce Fire & Rescue was incorporated in the year 1952.

The District provides the following services through their own capabilities:

**Table 2-1 Fire Services<sup>1</sup>**

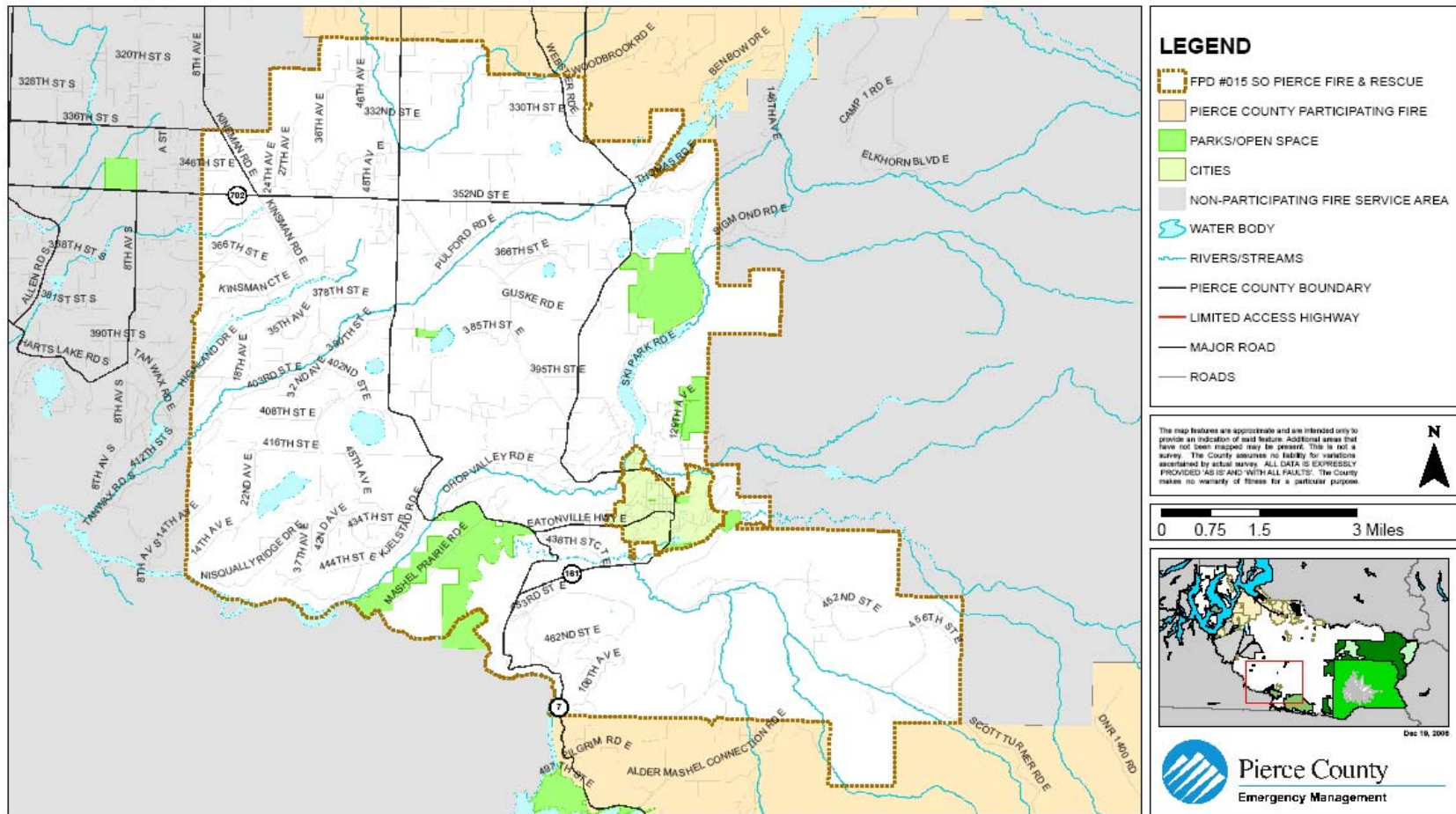
<b>FIRE SERVICES – SOUTH PIERCE FIRE &amp; RESCUE</b>			
<b>Fire Service</b>	<b>Yes</b>	<b>Fire Service</b>	<b>Yes</b>
Fire Suppression (the basic)	Yes	HAZMAT	No
Engine/Structure	Yes	High Angle	No
Ladder Truck(s)	No	Confined Space/Trench Rescue	No
Water Tender(s)	Yes	Technical Rescue	No
Command	Yes	High/Low Rope Rescue	No
Special Operations Team	No	Swift Water/Below Water	No
Wildland Engine(s)	No	Personal Water Crafts	No
Wildland Firefighting	Yes	Boat with Fire Suppression Capability	No
Fire Prevention/Inspectors	No	State Mobilization	No
Emergency Medical Services	Yes	Red Card	Yes
First Responder (basic first aid)	No	Personal Protective Equipment	Yes
Basic Life Support Response (EMT-B)	Yes	Department Natural Resources	No
Basic Life Support Transport	Yes	All Risk	No
Advanced Life Support Response (Paramedics)	Yes	Marine/Ship Availability	No
Advanced Life Support Transport	Yes	Public Education/Fire & Injury Prevention	Yes

# Geo-Political Summary

Table 2-2 Geo-Political Summary<sup>2</sup>

Jurisdiction	Area (sq mi)	Elevation Range (ft.)	Major Water Features	Regional Partners	
				Shared Borders	Land Use Authorities
South Pierce Fire & Rescue	79.51	440-2600	<ul style="list-style-type: none"> <li>• Nisqually Watershed</li> <li>• 11-Mid Nisqually River Basin</li> <li>• 12-Muck Creek Basin</li> <li>• 14-Ohop Creek Basin</li> <li>• 19-Upper Nisqually River Basin</li> <li>• 20-Mashel River Basin</li> </ul>	<ul style="list-style-type: none"> <li>• Eatonville Fire</li> <li>• PCFD #017</li> <li>• Graham Fire (#021)</li> <li>• Ashford Fire (#023)</li> <li>• Unprotected</li> </ul>	<ul style="list-style-type: none"> <li>• Eatonville</li> <li>• Unincorporated Pierce County</li> <li>• Unincorporated Thurston County</li> <li>• WA F&amp;W</li> <li>• WA Forest</li> <li>• WA DNR</li> <li>• WA DOT</li> </ul>

# FPD #015 SO PIERCE FIRE & RESCUE - BASE MAP



# Population Summary

## Demographics

**Table 2-1 Population<sup>3</sup>**

Jurisdiction	Population	Population Density (people/sq mi)	Population Served
South Pierce Fire & Rescue	5,890	74.08	5,890
Region 5	700,820	418	700,820

## Special Populations

**Table 2-2 Special Populations<sup>4</sup>**

Jurisdiction	Population	Population 65 Plus	% of Total	Population Under 18	% of Total
South Pierce Fire & Rescue	5,890	502	9%	1,698	29%
Region 5	700,820	71,620	10.2%	190,569	27.2%
WA State	5,894,121	662,148	11.2%	1,513,843	25.7%

# Infrastructure Summary

## General

**Table 2-5 Parcel Summary<sup>5</sup>**

Jurisdiction	# Parcels	Land Value	Average Land Value	Improved Value	Average Improved Value
South Pierce Fire & Rescue	4,707	\$698,037,000	\$148,298	\$416,957,600	\$88,582
Region 5	292,666	39,054,414.761	\$133,444	\$47,992,756,413	\$163,985

Jurisdiction	Total Assessed Value	Average Assessed Value
South Pierce Fire & Rescue	\$1,114,994,600	\$236,880
Region 5	\$87,047,171,174	\$297,428

**Table 2-6 Housing Summary<sup>6</sup>**

Jurisdiction	# Houses	Housing Density
South Pierce Fire & Rescue	2,491	30
Region 5	277,060	165

## Jurisdiction Infrastructure

The following table shows the overview of infrastructure owned by the South Pierce Fire & Rescue. The infrastructure is categorized according to the infrastructure sectors as designated by the Department of Homeland Security. This table is intended as a summary only.

For further details on Department of Homeland Security infrastructure sectors, please see the Process Section 1.

**Table 2-7 Owned Infrastructure<sup>7</sup>**

Total Infrastructure	Fire Stations	Training Facilities	Hose Towers	Total Value (\$)
3	3	0	0	Not Provided

# Economic Summary

Table 2-7 Fiscal Summary<sup>8</sup>

Jurisdiction	Operating Costs (per month)	Operating Budgeted Revenues <sup>9</sup>	Operating Budgeted Expenditures <sup>10</sup>	Fund Balance as % of Operating Cost	Avg Fund Balance (5 yrs)
South Pierce Fire & Rescue	Not Available	Not Available	Not Available	Not Available	Not Available

# Resource Directory

## Regional

- **South Pierce Fire & Rescue**  
<http://www.firedepartments.net/Washington/Eatonville/SouthPierceFireRescue.html>
- **Pierce County Government**  
<http://www.piercecountywa.org/PC/>
- **Pierce County DEM**  
<http://www.piercecountywa.org/pc/abtus/ourorg/dem/abtusdem.htm>
- **Pierce County PALS**  
<http://www.piercecountywa.org/pc/services/home/property/pals/palsmain.htm>
- **Municipal Research & Services Center of Washington (MRSC)**  
<http://www.mrsc.org>

## National

- **US Census**  
[www.census.gov/](http://www.census.gov/)

# Endnotes

---

<sup>1</sup> Information from survey completed by the Fire District.

<sup>2</sup> Information from Pierce County GIS application, CountyView Pro (7/06).

<sup>3</sup> Information from Pierce County GIS application, CountyView Pro using geoprocessing.

<sup>4</sup> Information from Pierce County GIS application, CountyView Pro using geoprocessing.

<sup>5</sup> Information from Pierce County GIS application, CountyView Pro. Numbers derived from tax parcels whose centers are within selected jurisdictions.

<sup>6</sup> Information from Pierce County GIS application, CountyView Pro. Numbers derived from tax parcels whose centers are within selected jurisdictions.

<sup>7</sup> Information obtained from Jurisdiction from Infrastructure Matrix.

<sup>8</sup> Information not available at the time of publication.

<sup>9</sup> Non-Capital

<sup>10</sup> Non-Capital