

SECTION 2

REGION 5 HAZARD MITIGATION PLAN CASCADE REGIONAL BLOOD SERVICES PROFILE SECTION

Table of Contents

TABLE OF CONTENTS	1
MISSION STATEMENT	2
HISTORY	2
SERVICES SUMMARY	2
GEO-POLITICAL SUMMARY	4
POPULATION SUMMARY	6
DEMOGRAPHICS.....	6
SPECIAL POPULATIONS	6
INFRASTRUCTURE SUMMARY	7
GENERAL	7
ORGANIZATION INFRASTRUCTURE	7
ECONOMIC SUMMARY	8
RESOURCE DIRECTORY	9
REGIONAL.....	9
NATIONAL.....	9
ENDNOTES.....	10

Mission Statement

The Mission of the Cascade Regional Blood Services is as follows:

Our mission is to provide a constant, safe and cost effective supply of blood and blood components to the communities we serve, and to provide other health services as required within the capabilities of our staff.

History

Since 1946 Cascade Regional Blood Services has served the South Sound area and surrounding counties as an independent, volunteer supported, not-for-profit regional blood resource.

Services Summary

Cascade Regional Blood Services provides the following services through their own capabilities:

Table 2-1 Summary of Services¹

HEALTH SERVICES SUMMARY – Cascade Regional Blood Services			
Health Service	Y/N	Health Service	Y/N
Behavior Health	N	Hyperbaric Medicine Services	N
Involuntary-Forensic	N	Immunization Services	N
Involuntary-General	N	Infusion Center	N
Involuntary-Geriatric	N	Inpatient Rehabilitation Services	N
Voluntary	N	Laboratory Services	N
Blood Services	Y	Lifeline	N
Whole Blood Donations	Y	Mental Health Services	N
Platelet Apheresis Donations	Y	Inpatient	N
Automated Double Red Cell Program	Y	Outpatient	N
Total Plasma Exchange	Y	Neurosciences	N
Red Blood Cell Exchanges	Y	Gamma Knife® Technology	N
White Blood Cell or Platelet Depletion	Y	Nutrition Education Services	N
Autologous Donations	Y	Occupational Health Services	N
Therapeutic Phlebotomy	Y	Orthopedics	N
Stem Cell Program	Y	Joint Replacement	N
Burn Services	N	Pain Management	N
Cancer Center	N	Pathology Services	N
Oncology (inpatient)	N	Pediatrics	N
Oncology (outpatient)	N	Inpatient	N
Case Management	N	Intensive Care	N
Radiation Therapy	N	Surgery	N
Consulting Nurse	N	Pharmaceutical Services	N
Critical Care Services	N	Coumadin Clinic	N
Coronary Care	N	Primary Care	N

HEALTH SERVICES SUMMARY – Cascade Regional Blood Services			
Intensive Care	N	Sleep Disorders Centers	N
Progressive Care	N	Spiritual Care	N
Diabetes Services	N	Surgical Services	N
Health Service	Y/N	Health Service	Y/N
Diagnostic Imaging Services	N	Inpatient	N
Ultrasound	N	Outpatient	N
CT Scan	N	Trauma Services	N
MRI	N	Level I	N
Dialysis Services (Nephrology)	N	Level II	N
Community Outreach	N	Level III	N
Emergency	N	Level IV	N
Outpatient	N	Trauma Clinic	N
Inpatient	N	Urgent Care	N
Education and Support Services	N		
Emergency Services	N		
Level II Emergency	N	Weight Loss Services	N
Level III Emergency	N	Surgical Weight Loss	N
Level IV Emergency	N		
Level V Emergency	N		
EMS	N		
Enterostomal Therapy	N	Women’s Care Services	N
Eye Care	N	Family Birth Center	N
Gastroenterology Services	N	Level I Nursery	N
Heart & Vascular Center	N	Level II Nursery	N
Cardiothoracic Surgery	N	Prenatal Services	N
Cardiac Rehab Program	N	Wound Care Services	N
Cardiopulmonary Services	N		
Heart Failure Clinic	N		

Geo-Political Summary

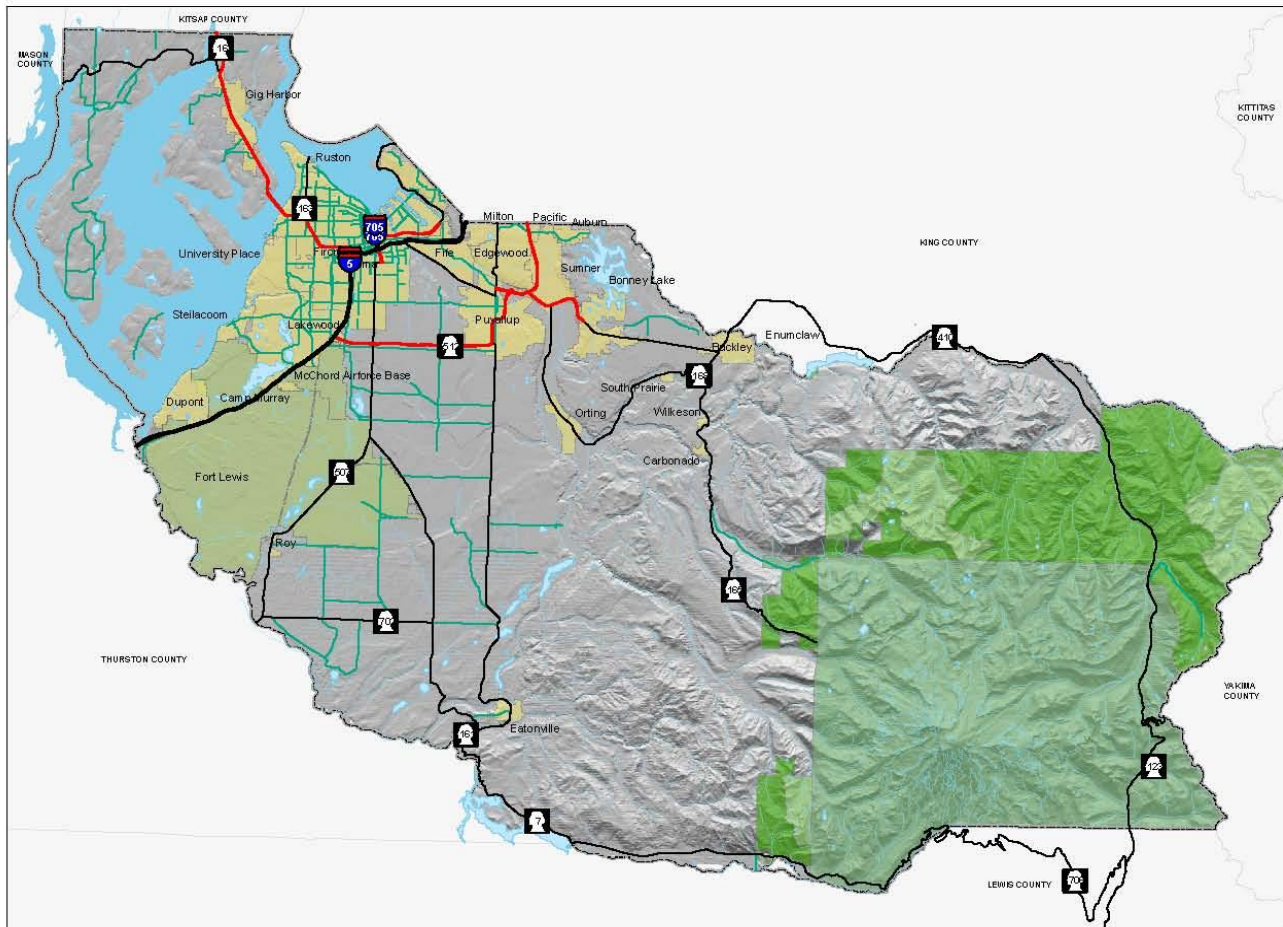
Table 2-2 Geo-Political Summary²

Organization	Area (sq mi)	Elevation Range (ft.)	Major Water Features	Regional Partners	
				Shared Borders	Land Use Authorities
Region 5 Health & Medical Mitigation Plan	1,794	0-14,410'	<ul style="list-style-type: none"> • White/ Puyallup Watershed • Chambers Clover Watershed • Nisqually Watershed • Kitsap/Key Peninsula-Gig Harbor-Islands Watershed 	<ul style="list-style-type: none"> • Thurston • Lewis • Mason • Kitsap • King • Yakima 	<ul style="list-style-type: none"> • Unincorporated Pierce County • Tacoma • Gig Harbor • Fircrest • Lakewood • Ruston • Milton • Edgewood • Bonney-Lake • Fife • Puyallup Tribe • Auburn • Pacific • Sumner • Orting • Carbonado • Buckley • Wilkeson • South Prairie • Eatonville • Roy • DuPont • Steilacoom • University Place

DRAFT

Map 2- 1 Pierce County - Basemap

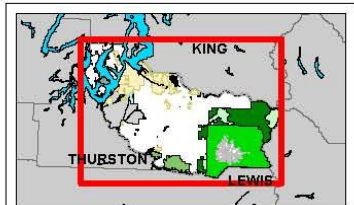
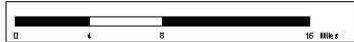
PIERCE COUNTY - BASEMAP



Legend

- CITIES
- MILITARY
- NATIONAL FOREST
- NATIONAL PARK
- WILDERNESS AREA
- WATER BODY
- RIVERS/STREAMS
- Limited Access
- Limited Access State Routes
- Other State Routes
- Arterials

The map features are approximate and are included only to provide a location of said feature. Additional features that have not been mapped may be present. This is not a warranty. The County assumes no liability or guarantee for accuracy or reliability. ALL DATA IS EXPRESSLY PROVIDED AS IS AND WITH ALL FAULTS. THE COUNTY MAKES NO WARRANTY OF FITNESS FOR A PARTICULAR PURPOSE.



August 18, 2009



Pierce County
Emergency Management

Population Summary

Demographics

Table 2-3 County Population^{3,4,5,6}

Region 5	Population	Population Density (people/sq mi)	Population Served	Projected Year 2017 Population Change (%)	Projected Population Density	Projected 2017 Population Served
Region 5	700,820	418	700,820	1.04%	435	729,471

Special Populations

Table 2-4 Special Populations⁷

Organization	Total Clients	Clients 65 Plus	% of Total	Clients Under 18	% of Total
Region 5	700,820	71,620	10.2%	190,569	27.2%
WA State	5,894,121	662,148	11.2%	1,513,843	25.7%

DRAFT

Infrastructure Summary

General

Table 2-5 Parcel Summary⁸

Organization	# Parcels	Assessed Value Total (\$)	Land Value (\$/sq mile)	Improvement Value Total (\$)	Avg Improvement Value (\$/parcel)
Cascade Regional Blood Services	2	\$2,211,500	\$423,100	\$1,788,400	\$894,200
Region 5	292,666	\$39,054,414,761	\$133,444	\$47,992,756,413	\$163,984.73

Organization	Total Assessed Value	Average Assessed Value
Cascade Regional Blood Services	\$2,211,500	\$1,105,750
Region 5	\$87,047,171,174	\$297,428

Organization Infrastructure

The following table shows the overview of infrastructure owned by the Cascade Regional Blood Services. The infrastructure is categorized according to the infrastructure sectors as designated by the Department of Homeland Security. This table is intended as a summary only.

For further details on what is included in the Department of Homeland Security infrastructure sectors, please see the Process Section 1.

Table 2-6 Owned Infrastructure⁹

Total Infrastructure	Emerg. Services	Tele-comm	Trans- portation	Public Health	Govern- ment	Commer- cial	Total Value (\$)
2	0	0	0	2	0	0	\$2,211,500

Economic Summary

Table 2-7 Fiscal Summary¹⁰

Organization	Operating Costs (per month)	Operating Budgeted Revenues ¹¹	Operating Budgeted Expenditures ¹²	Fund Balance as % of Operating Cost	Avg Fund Balance (5 yrs)
Cascade Regional Blood Services	\$960,000	\$1,008,083	\$963,347	53%	\$4,246,994

Table 2-8 Pierce County Employment Profile¹³

Employment Category (SIC)	Pierce County
Agriculture, Forestry, Fishing, Mining and Hunting	3,126
Construction	24,340
FIRES (Finance, Insurance, Real Estate, and Services)	18,212
Wholesale Trade	13,919
Transportation and Warehousing and Utilities	21,555
Manufacturing	39,511
Retail	39,408
Education, Health and Social Services	65,256
Professional, Scientific, Management, Administrative, Waste Management	23,095
Public Administration	18,363

Table 2-9 Unemployment Rate¹⁴

Organization	Unemployment Rate
Region 5	8.9%
WA State	9.2%

Resource Directory

Regional

- **Cascade Regional Blood Services**
<http://www.cascadebloodcenters.org>
- **Tacoma Pierce County Health Department**
<http://www.tpchd.org>
- **Washington State Department of Health**
<http://www.doh.wa.gov>
- **Pierce County Government**
<http://www.piercecountywa.org/PC/>
- **Pierce County DEM**
<http://www.piercecountywa.org/mitigation>
- **Municipal Research & Services Center of Washington (MRSC)**
<http://www.mrsc.org>

National

- **Centers for Disease Control and Prevention**
<http://www.cdc.gov>
- **U.S. Department of Health and Human Services**
<http://www.hhs.gov/>
- **National Institute of Health**
<http://www.nih.gov/>

Endnotes

¹ Information from survey compiled by planning team.

² Information from Pierce County GIS application, CountyView Pro (7/06).

³ "Population" from Census 2000, Office of Financial Management.

⁴ "Projected Population Change (%)" from Pierce County Buildable Lands Report, Sept 2002.

⁵ "Projected Population Density" is based on an assumption of the jurisdiction maintaining the same geographic area and boundaries. It does not consider changes in annexation, district mergers, etc.

⁶ "Projected 2017 Population" from Pierce County Buildable Lands Report, Sept 2002.

⁷ Information from Pierce County GIS application, CountyView Pro projected for 2007.

⁸ Information from Pierce County GIS application, CountyView Pro projected for 2007.

⁹ Information obtained from Organization from Infrastructure Matrix.

¹⁰ Information obtained from Organization from current Budget.

¹¹ Non-Capital

¹² Non-Capital

¹³ Information from Census 2000, Office of Financial Management.

¹⁴ Information from Census 2000, Office of Financial Management.

DRAFT