

SECTION 2

REGION 5 HAZARD MITIGATION PLAN COMMUNITY HEALTH CARE PROFILE SECTION

Table of Contents

TABLE OF CONTENTS	1
MISSION STATEMENT	2
SERVICES SUMMARY	2
HISTORY	4
POPULATION SUMMARY	7
DEMOGRAPHICS	7
SPECIAL POPULATIONS	7
INFRASTRUCTURE SUMMARY	8
GENERAL	8
ORGANIZATION INFRASTRUCTURE	8
ECONOMIC SUMMARY	9
RESOURCE DIRECTORY	10
REGIONAL	10
NATIONAL	10
ENDNOTES.....	12

Mission Statement

The Mission of Community Health Care is as follows:

To provide the highest quality health care with compassionate and accessible service for all.

Vision

The Vision of Community Health Care is as follows:

- **Be a national model of excellence in patient satisfaction via patient-centered health care.**
- **Be a national model of excellence in community-centered health care, as measured by outcome-based evaluation.**
- **Be the provider of choice for the health care needs of the low income and underserved.**
- **Be a community leader in initiating and developing collaborative relationships.**

Services Summary

Community Health Care was established in the year 1987.

Community Health Care provides the following services through their own capabilities:

Table 2-1 Summary of Services¹

HEALTH SERVICES SUMMARY – (Community Health Care)			
Health Service	Y/N		Y/N
Behavior Health	NO	Hyperbaric Medicine Services	NO
Involuntary-Forensic		Immunization Services	YES
Involuntary-General		Infusion Center	NO
Involuntary-Geriatric		Inpatient Rehabilitation Services	NO
Voluntary		Laboratory Services	YES
Blood Services	NO	Lifeline	NO
Whole Blood Donations		Mental Health Services	YES
Platelet Apheresis Donations		Inpatient	NO
Automated Double Red Cell Program		Outpatient	YES
Total Plasma Exchange		Neurosciences	NO
Red Blood Cell Exchanges		Gamma Knife® Technology	
White Blood Cell or Platelet Depletion		Nutrition Education Services	YES
Autologous Donations		Occupational Health Services	NO
Therapeutic Phlebotomy		Orthopedics	NO
Stem Cell Program		Joint Replacement	
Burn Services	NO	Pain Management	YES

HEALTH SERVICES SUMMARY – (Community Health Care)			
Cancer Center	NO	Pathology Services	NO
Oncology (inpatient)		Pediatrics	NO
Oncology (outpatient)		Inpatient	
Case Management		Intensive Care	
Radiation Therapy		Surgery	
Consulting Nurse	YES	Pharmaceutical Services	YES
Critical Care Services	NO	Coumadin Clinic	YES
Coronary Care		Primary Care	YES
Intensive Care		Sleep Disorders Centers	NO
Progressive Care		Spiritual Care	NO
Diabetes Services	YES	Surgical Services	NO
Diagnostic Imaging Services	NO	Inpatient	
Ultrasound		Outpatient	
CT Scan		Trauma Services	NO
MRI		Level I	
Dialysis Services (Nephrology)	NO	Level II	
Community Outreach		Level III	
Emergency		Level IV	
Outpatient		Trauma Clinic	
Inpatient		Urgent Care	YES
Education and Support Services	YES		
Emergency Services	NO		
Level II Emergency		Weight Loss Services	NO
Level III Emergency		Surgical Weight Loss	
Level IV Emergency			
Level V Emergency			
EMS			
Enterostomal Therapy	NO	Women’s Care Services	YES
Eye Care	NO	Family Birth Center	NO
Gastroenterology Services	NO	Level I Nursery	NO
Heart & Vascular Center	NO	Level II Nursery	NO
Cardiothoracic Surgery		Prenatal Services	YES
Cardiac Rehab Program		Wound Care Services	YES
Cardiopulmonary Services			
Heart Failure Clinic			

History

Community Health Care is a private, non-profit organization created in 1987 when the clinical system moved from the Tacoma-Pierce County Health Department after several years of operation by that organization. The total history of the clinic system dates to 1969 when local physicians and concerned citizens, recognizing the problems of access to quality health care for the county's low-income and uninsured residents, established two volunteer clinics to help fill that void.

The first two clinics, in East Tacoma and in the Hilltop area of Downtown Tacoma, were operated one or two nights a week by volunteer physicians with the help of other citizens handling logistics and paperwork. In the early 1970s limited funding was obtained from the federal Model Cities Program to support the continuation of the clinical services. In 1980 a new federal funding resource called The Urban Health Initiative made it possible for the county Health Department to take over the operation of the two clinics and to establish two additional clinics, one in Sumner and one in Lakewood.

In 1987, with the passage of the federal Public Health Service Act, funds became available to place the clinic operations under the leadership of a private, non-profit organization. Community Health Care Delivery System (CHCDS) was chartered in late 1986 and took over the operation of the four clinics under the direction of Ms. Florence Reeves as Executive Director. Ms. Reeves was a Registered Nurse who had headed the clinic program within the Health Department. CHCDS, under the federal funding guidelines, was (and is) governed by a Board of Directors which is composed of clinic patients and other local citizens. By federal requirement, 51% of the Board members must be patients of the clinic system.

With the early addition of a dental clinic to the initial four medical clinics CHCDS began a consistent pattern of growth in an attempt to better meet the needs of the low-income and uninsured residents of Pierce County. In 1995 David Flentge became the new President/CEO of the organization and in 1997, on the 10th anniversary of the organization, the name was officially changed to Community Health Care.

This organization currently operates nine medical and two dental clinics as well as a Health Care for the Homeless program. In 2007, Community Health Care served over 35,000 patients.

Geo-Political Summary

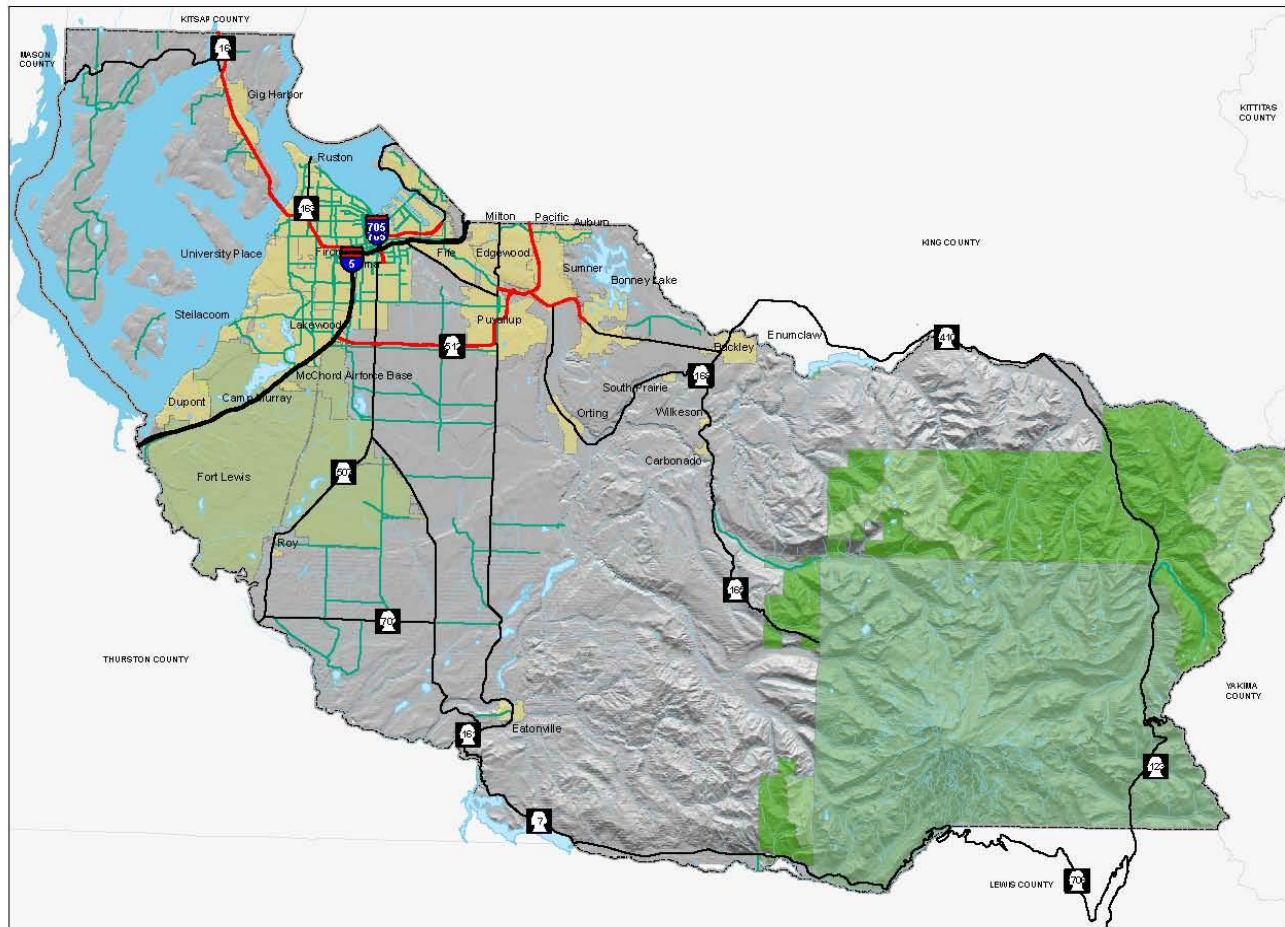
Table 2-2 Geo-Political Summary²

Organization	Area (sq mi)	Elevation Range (ft.)	Major Water Features	Regional Partners	
				Shared Borders	Land Use Authorities
Region 5 Health & Medical Mitigation Plan	1,794	0-14,410'	<ul style="list-style-type: none"> • White/ Puyallup Watershed • Chambers Clover Watershed • Nisqually Watershed • Kitsap/Key Peninsula-Gig Harbor-Islands Watershed 	<ul style="list-style-type: none"> • Thurston • Lewis • Mason • Kitsap • King • Yakima 	<ul style="list-style-type: none"> • Unincorporated Pierce County • Tacoma • Gig Harbor • Fircrest • Lakewood • Ruston • Milton • Edgewood • Bonney-Lake • Fife • Puyallup Tribe • Auburn • Pacific • Sumner • Orting • Carbonado • Buckley • Wilkeson • South Prairie • Eatonville • Roy • DuPont • Steilacoom • University Place

DRAFT

Map 2- 1 Pierce County - Basemap

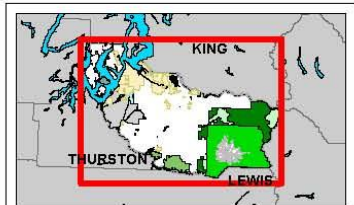
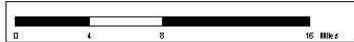
PIERCE COUNTY - BASEMAP



Legend

- CITIES
- MILITARY
- NATIONAL FOREST
- NATIONAL PARK
- WILDERNESS AREA
- WATER BODY
- RIVERS/STREAMS
- Limited Access
- Limited Access State Routes
- Other State Routes
- Arterials

The map features are approximate and are included only to provide a location of said feature. Additional features that have not been mapped may be present. This is not a warranty. The County assumes no liability or guarantee associated with actual use. ALL DATA IS EXPRESSLY PROVIDED AS IS AND WITH ALL FAULTS. THE COUNTY MAKES NO WARRANTY OF FITNESS FOR A PARTICULAR PURPOSE.



August 18, 2009



Population Summary

Demographics

Table 2-3 County Population^{3,4,5,6}

Region 5	Population	Population Density (people/sq mi)	Population Served	Projected Year 2017 Population Change (%)	Projected Population Density	Projected 2017 Population Served
Region 5	700,820	418	700,820	1.04%	435	729,471

Special Populations

Table 2-4 Special Populations⁷

Organization	Total Clients	Clients 65 Plus	% of Total	Clients Under 18	% of Total
Region 5	700,820	71,620	10.2%	190,569	27.2%
WA State	5,894,121	662,148	11.2%	1,513,843	25.7%

DRAFT

Infrastructure Summary

General

Table 2-5 Parcel Summary⁸

Organization	# Parcels	Assessed Land Value Total (\$)	Avg Land Value (\$/sq mile)	Improvement Value Total (\$)	Avg Improvement Value (\$/parcel)
Community Health Care	2	\$672,000	\$336,000	\$976,700	\$488,350
Region 5	292,666	\$39,054,414,761	\$133,444	\$47,992,756,413	\$163,984.73

Organization	Total Assessed Value	Average Assessed Value
Community Health Care	\$1,648,700	\$824,350
Region 5	\$87,047,171,174	\$297,428

Organization Infrastructure

The following table shows the overview of infrastructure owned by the Community Health Care. The infrastructure is categorized according to the infrastructure sectors as designated by the Department of Homeland Security. This table is intended as a summary only.

For further details on what is included in the Department of Homeland Security infrastructure sectors, please see the Process Section 1.

Table 2-6 Owned Infrastructure⁹

Total Infrastructure	Emerg. Services	Tele-comm	Trans- portation	Public Health	Govern- ment	Commer- cial	Total Value (\$)
9	0	0	0	9	0	0	\$1,648,700

Economic Summary

Table 2-7 Fiscal Summary¹⁰

Organization	Operating Costs (per month)	Operating Budgeted Revenues ¹¹	Operating Budgeted Expenditures ¹²	Fund Balance as % of Operating Cost	Avg Fund Balance (5 yrs)
Community Health Care	TBD	TBD	TBD	TBD	TBD

Table 2-8 Pierce County Employment Profile¹³

Employment Category (SIC)	Pierce County
Agriculture, Forestry, Fishing, Mining and Hunting	3,126
Construction	24,340
FIRES (Finance, Insurance, Real Estate, and Services)	18,212
Wholesale Trade	13,919
Transportation and Warehousing and Utilities	21,555
Manufacturing	39,511
Retail	39,408
Education, Health and Social Services	65,256
Professional, Scientific, Management, Administrative, Waste Management	23,095
Public Administration	18,363

Table 2-9 Unemployment Rate¹⁴

Organization	Unemployment Rate
Region 5	8.9%
WA State	9.2%

Resource Directory

Regional

- **Community Health Care**
<http://www.commhealth.org>
- **Tacoma Pierce County Health Department**
<http://www.tpchd.org>
- **Washington State Department of Health**
<http://www.doh.wa.gov>
- **Pierce County Government**
<http://www.piercecountywa.org/PC/>
- **Pierce County DEM**
<http://www.piercecountywa.org/mitigation>
- **Municipal Research & Services Center of Washington (MRSC)**
<http://www.mrsc.org>

National

- **Centers for Disease Control and Prevention**
<http://www.cdc.gov>
- **U.S. Department of Health and Human Services**
<http://www.hhs.gov/>
- **National Institute of Health**
<http://www.nih.gov/>

(This page intentionally left blank)

DRAFT

Endnotes

¹ Information from survey compiled by planning team.

² Information from Pierce County GIS application, CountyView Pro (7/06).

³ “Population” from Census 2000, Office of Financial Management.

⁴ “Projected Population Change (%)” from Pierce County Buildable Lands Report, Sept 2002.

⁵ “Projected Population Density” is based on an assumption of the jurisdiction maintaining the same geographic area and boundaries. It does not consider changes in annexation, district mergers, etc.

⁶ “Projected 2017 Population” from Pierce County Buildable Lands Report, Sept 2002.

⁷ Information from Pierce County GIS application, CountyView Pro projected for 2007.

⁸ Information from Pierce County GIS application, CountyView Pro projected for 2007.

⁹ Information obtained from Organization from Infrastructure Matrix.

¹⁰ Information obtained from Organization from current Budget.

¹¹ Non-Capital

¹² Non-Capital

¹³ Information from Census 2000, Office of Financial Management.

¹⁴ Information from Census 2000, Office of Financial Management.

DRAFT