

SECTION 2

REGION 5 HAZARD MITIGATION PLAN WESTERN STATE HOSPITAL PROFILE SECTION

Table of Contents

TABLE OF CONTENTS	1
MISSION STATEMENT	2
SERVICES SUMMARY	2
GEO-POLITICAL SUMMARY	4
HISTORY	5
POPULATION SUMMARY	7
DEMOGRAPHICS.....	7
SUMMARY	7
INFRASTRUCTURE SUMMARY	8
GENERAL	8
ORGANIZATION INFRASTRUCTURE	8
ECONOMIC SUMMARY	9
RESOURCE DIRECTORY	10
REGIONAL.....	10
NATIONAL.....	10
ENDNOTES.....	12

Mission Statement

The Mission of Western State Hospital is as follows:

The mission of the Mental Health Division is to promote recovery and safety.

Services Summary

Western State Hospital was established in the year 1868.

Western State Hospital provides the following services through their own capabilities:

Table 2-1 Summary of Services¹

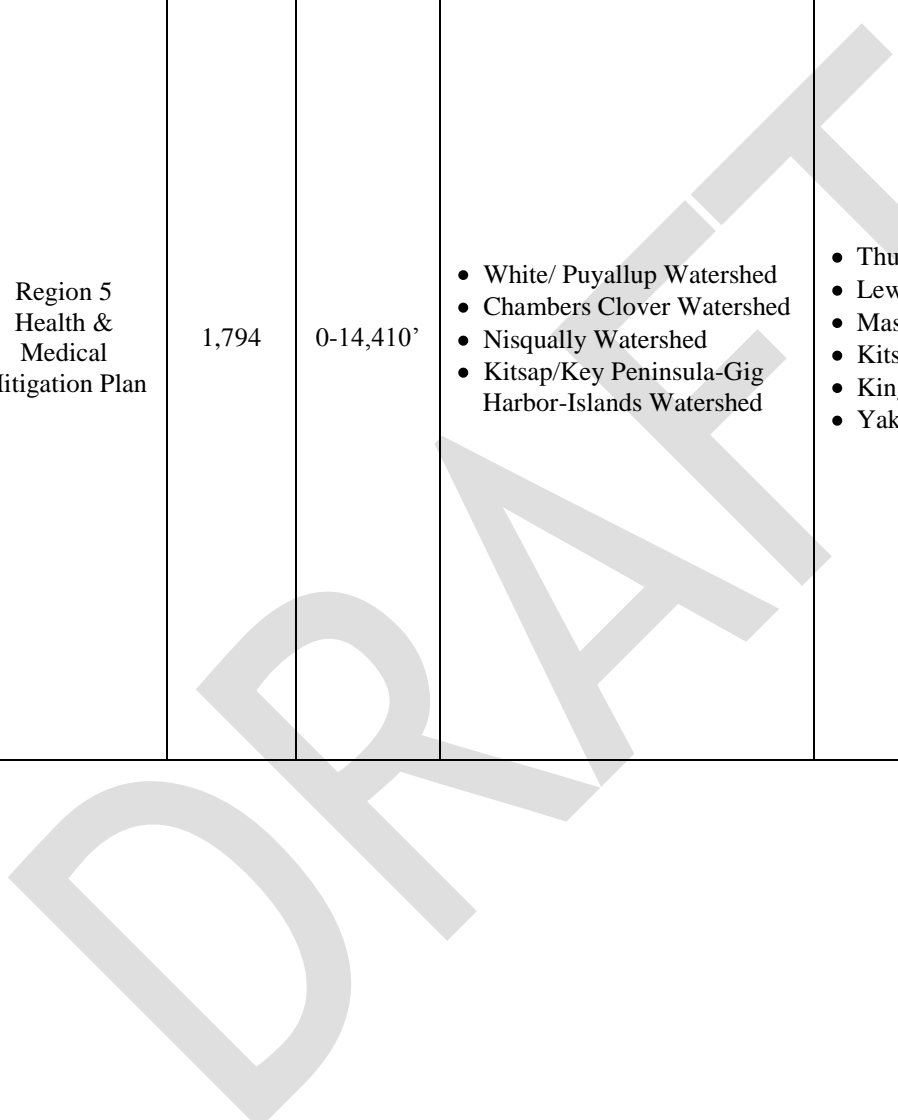
HEALTH SERVICES SUMMARY – Western State Hospital			
Health Service	Y/N	Health Service	Y/N
Behavior Health	Y	Hyperbaric Medicine Services	
Involuntary-Forensic	Y	Immunization Services	
Involuntary-General	Y	Infusion Center	
Involuntary-Geriatric	Y	Inpatient Rehabilitation Services	
Voluntary	Y	Laboratory Services	
Blood Services		Lifeline	
Whole Blood Donations		Mental Health Services	
Platelet Apheresis Donations		Inpatient	
Automated Double Red Cell Program		Outpatient	
Total Plasma Exchange		Neurosciences	
Red Blood Cell Exchanges		Gamma Knife® Technology	
White Blood Cell or Platelet Depletion		Nutrition Education Services	
Autologous Donations		Occupational Health Services	
Therapeutic Phlebotomy		Orthopedics	
Stem Cell Program		Joint Replacement	
Burn Services		Pain Management	
Cancer Center		Pathology Services	
Oncology (inpatient)		Pediatrics	
Oncology (outpatient)		Inpatient	
Case Management		Intensive Care	
Radiation Therapy		Surgery	
Consulting Nurse		Pharmaceutical Services	
Critical Care Services		Coumadin Clinic	
Coronary Care		Primary Care	
Intensive Care		Sleep Disorders Centers	
Progressive Care		Spiritual Care	

HEALTH SERVICES SUMMARY – Western State Hospital			
Diabetes Services		Surgical Services	
Diagnostic Imaging Services		Inpatient	
Ultrasound		Outpatient	
CT Scan		Trauma Services	
MRI		Level I	
Dialysis Services (Nephrology)		Level II	
Community Outreach		Level III	
Emergency		Level IV	
Outpatient		Trauma Clinic	
Inpatient		Urgent Care	
Education and Support Services			
Emergency Services			
Level II Emergency		Weight Loss Services	
Level III Emergency		Surgical Weight Loss	
Level IV Emergency			
Level V Emergency			
EMS			
Enterostomal Therapy		Women’s Care Services	
Eye Care		Family Birth Center	
Gastroenterology Services		Level I Nursery	
Heart & Vascular Center		Level II Nursery	
Cardiothoracic Surgery		Prenatal Services	
Cardiac Rehab Program		Wound Care Services	
Cardiopulmonary Services			
Heart Failure Clinic			

Geo-Political Summary

Table 2-2 Geo-Political Summary²

Organization	Area (sq mi)	Elevation Range (ft.)	Major Water Features	Regional Partners	
				Shared Borders	Land Use Authorities
Region 5 Health & Medical Mitigation Plan	1,794	0-14,410'	<ul style="list-style-type: none"> • White/ Puyallup Watershed • Chambers Clover Watershed • Nisqually Watershed • Kitsap/Key Peninsula-Gig Harbor-Islands Watershed 	<ul style="list-style-type: none"> • Thurston • Lewis • Mason • Kitsap • King • Yakima 	<ul style="list-style-type: none"> • Unincorporated Pierce County • Tacoma • Gig Harbor • Fircrest • Lakewood • Ruston • Milton • Edgewood • Bonney-Lake • Fife • Puyallup Tribe • Auburn • Pacific • Sumner • Orting • Carbonado • Buckley • Wilkeson • South Prairie • Eatonville • Roy • DuPont • Steilacoom • University Place



History

Western State Hospital is located on the site of historic Fort Steilacoom. Fort Steilacoom served as a military post from 1849 to 1868 when the federal government abandoned it. The Washington territory purchased the fort with the intent of turning it into a hospital for the insane. The new hospital, called the "Insane Asylum of Washington Territory," opened in 1871 with 15 men and 6 women patients transferred in from Monticello, Washington.

The period between 1871 and 1875 was very difficult for the new hospital. A local businessman had contracted with the legislature to look after the daily needs of the patients. At the same time, a resident physician was hired to provide psychiatric treatment and medical care. Unfortunately, patient neglect became so bad at the hands of the businessman contractor, that the Medical Society of the Washington Territory had to intervene. The Medical Society was instrumental in influencing the legislature to abandon the dual-management system and to place total care of the patients with a medical superintendent.

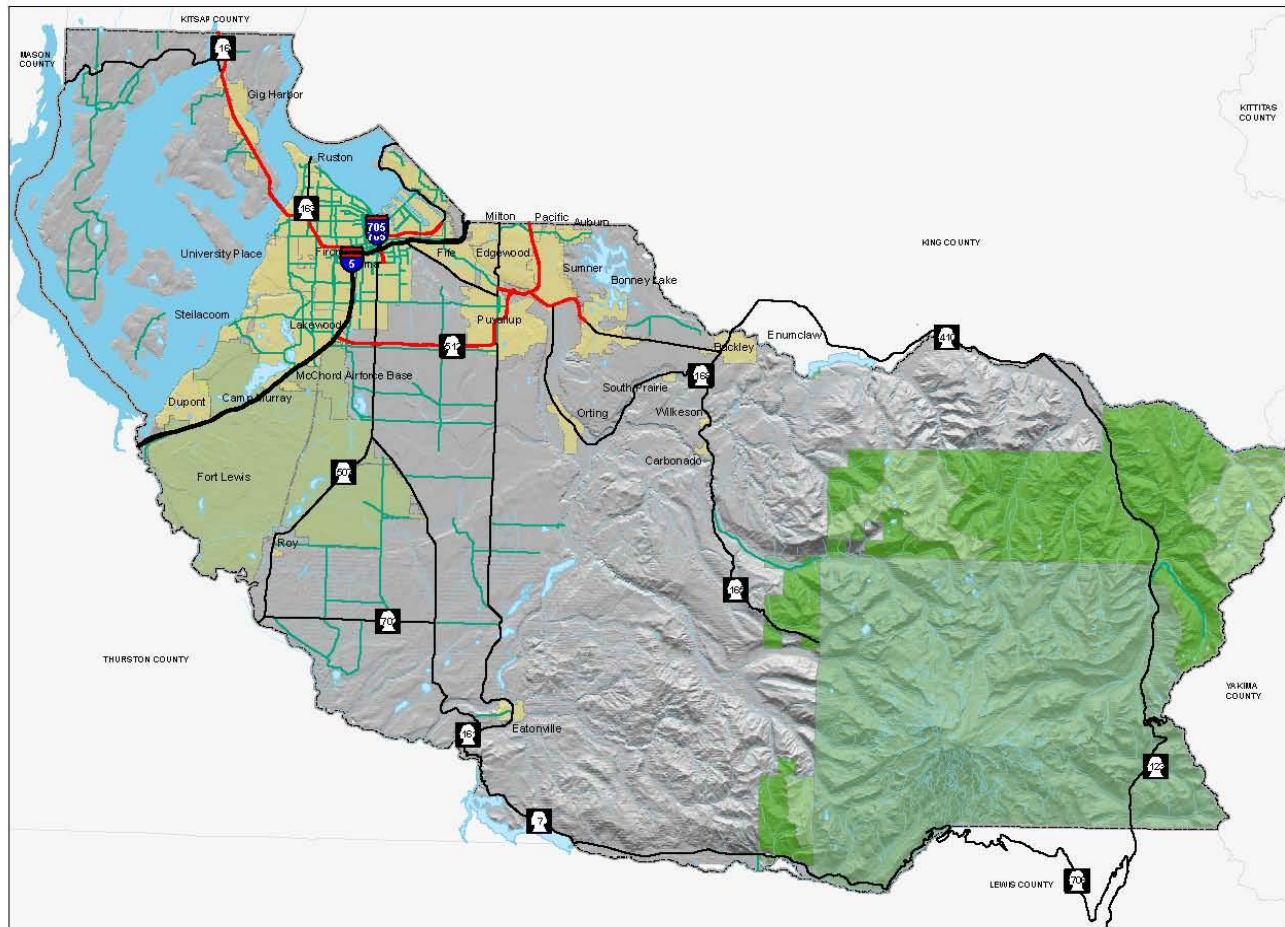
Statehood in 1889 brought about another change to the hospital: the name was changed to Western State Hospital. When the number of patients reached 200, a committee was selected to locate an accessible location for a second state hospital. Medical Lake in eastern Washington was chosen as the site for Eastern State Hospital, as it was only eight miles from the main line of the Northern Pacific Railroad, and was on three stage routes.

As times changed for the new State of Washington, so did methods for treating the mentally ill admitted to Western State Hospital. Hydrotherapy was the early treatment of choice. Wet packs, hot tubs and showers were used for nearly 50 years to create a calming effect for the patients. Insulin therapy was started in the mid 1930's, followed by electric shock therapy. A surgical procedure called the frontal lobotomy was used for a period of time. It was later replaced with psychotropic drugs, counseling, and behavior modification therapies which are all still used today.



Map 2- 1 Pierce County - Basemap

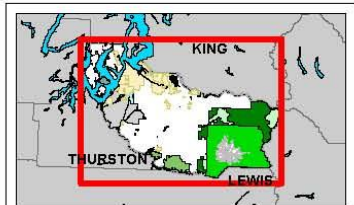
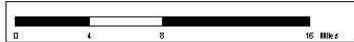
PIERCE COUNTY - BASEMAP



Legend

- CITIES
- MILITARY
- NATIONAL FOREST
- NATIONAL PARK
- WILDERNESS AREA
- WATER BODY
- RIVERS/STREAMS
- Limited Access
- Limited Access State Routes
- Other State Routes
- Arterials

The map features are approximate and are included only to provide a location of said feature. Additional features that have not been mapped may be present. This is not a warranty. The County assumes no liability or guarantee associated with actual use. ALL DATA IS EXPRESSLY PROVIDED AS IS AND WITH ALL FAULTS. THE COUNTY MAKES NO WARRANTY OF FITNESS FOR A PARTICULAR PURPOSE.



August 18, 2009



Population Summary

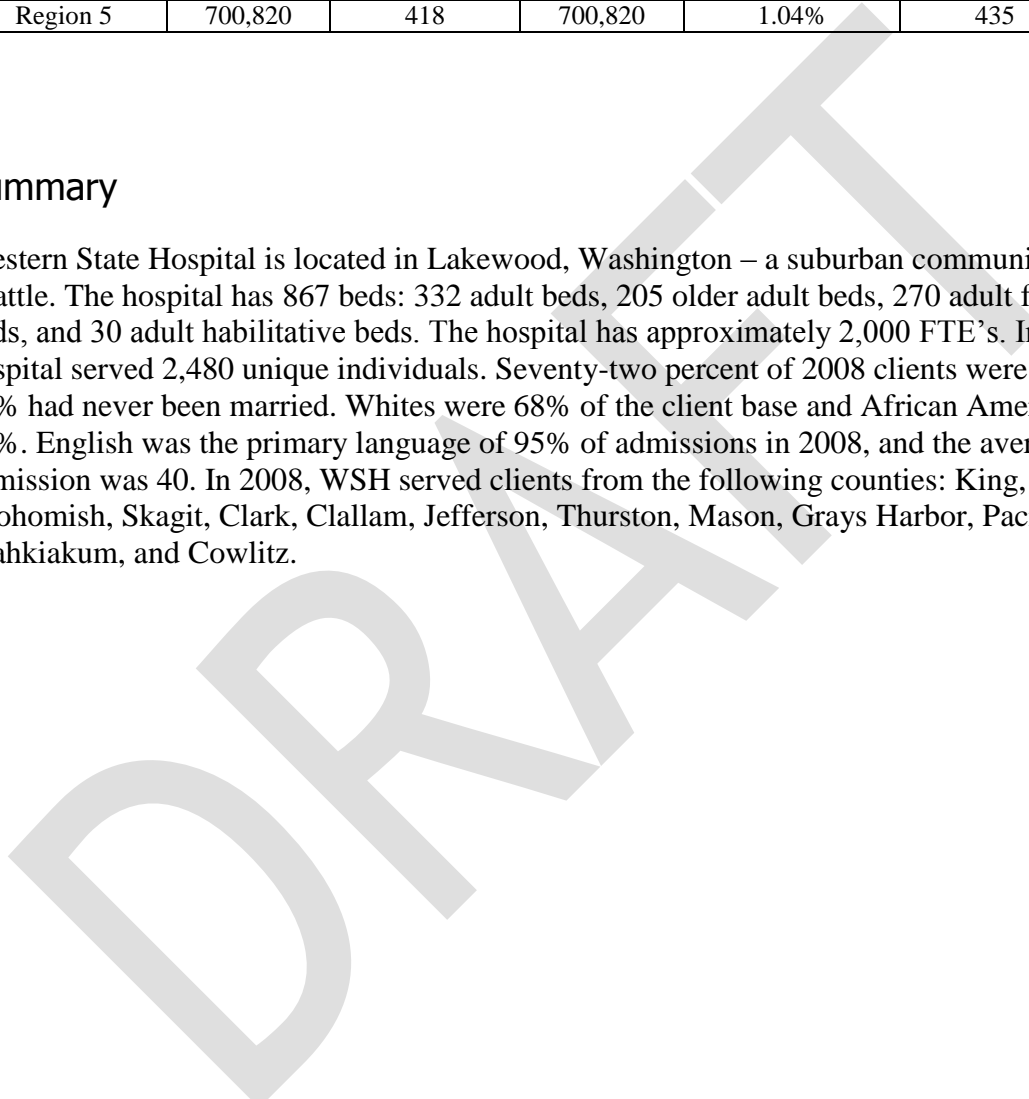
Demographics

Table 2-3 County Population^{3,4,5,6}

Region 5	Population	Population Density (people/sq mi)	Population Served	Projected Year 2017 Population Change (%)	Projected Population Density	Projected 2017 Population Served
Region 5	700,820	418	700,820	1.04%	435	729,471

Summary

Western State Hospital is located in Lakewood, Washington – a suburban community south of Seattle. The hospital has 867 beds: 332 adult beds, 205 older adult beds, 270 adult forensic beds, and 30 adult habilitative beds. The hospital has approximately 2,000 FTE’s. In 2008, the hospital served 2,480 unique individuals. Seventy-two percent of 2008 clients were male and 61% had never been married. Whites were 68% of the client base and African Americans were 19%. English was the primary language of 95% of admissions in 2008, and the average age at admission was 40. In 2008, WSH served clients from the following counties: King, Pierce, Snohomish, Skagit, Clark, Clallam, Jefferson, Thurston, Mason, Grays Harbor, Pacific, Lewis, Wahkiakum, and Cowlitz.



Infrastructure Summary

General

Table 2-4 Parcel Summary⁷

Organization	# Parcels	Assessed Land Value Total (\$)	Avg. Land Value (\$/sq mile)	Improvement Value Total (\$)	Avg Improvement Value (\$/parcel)
Western State Hospital	5	\$35,781,900	\$7,156,380	\$110,162,800	\$22,032,560
Region 5	292,666	\$39,054,414,761	\$133,444	\$47,992,756,413	\$163,984.73

Organization	Total Assessed Value	Average Assessed Value
Western State Hospital	\$145,944,700	\$29,188,940
Region 5	\$87,047,171,174	\$297,428

Organization Infrastructure

The following table shows the overview of infrastructure owned by the Western State Hospital. The infrastructure is categorized according to the infrastructure sectors as designated by the Department of Homeland Security. This table is intended as a summary only.

For further details on what is included in the Department of Homeland Security infrastructure sectors, please see the Process Section 1.

Table 2-5 Owned Infrastructure⁸

Total Infrastructure	Emerg. Services	Tele-comm	Trans- poration	Public Health	Govern- ment	Commer- cial	Total Value (\$)
47	0	0	0	47	0	0	\$145,944,700

Economic Summary

Table 2-6 Fiscal Summary⁹

Organization	Operating Costs (per month)	Operating Budgeted Revenues ¹⁰	Operating Budgeted Expenditures ¹¹	Fund Balance as % of Operating Cost	Avg Fund Balance (5 yrs)
Western State Hospital	\$13,500,795	Not Available	\$156,269,787	Not Available	Not Available

Table 2-7 Pierce County Employment Profile¹²

Employment Category (SIC)	Pierce County
Agriculture, Forestry, Fishing, Mining and Hunting	3,126
Construction	24,340
FIRES (Finance, Insurance, Real Estate, and Services)	18,212
Wholesale Trade	13,919
Transportation and Warehousing and Utilities	21,555
Manufacturing	39,511
Retail	39,408
Education, Health and Social Services	65,256
Professional, Scientific, Management, Administrative, Waste Management	23,095
Public Administration	18,363

Table 2-8 Unemployment Rate¹³

Organization	Unemployment Rate
Region 5	8.9%
WA State	9.2%

Resource Directory

Regional

- **Western State Hospital**
<http://www.dshs.wa.gov>
- **Tacoma Pierce County Health Department**
<http://www.tpchd.org>
- **Washington State Department of Health**
<http://www.doh.wa.gov>
- **Pierce County Government**
<http://www.piercecountywa.org/PC/>
- **Pierce County DEM**
<http://www.piercecountywa.org/mitigation>
- **Municipal Research & Services Center of Washington (MRSC)**
<http://www.mrsc.org>

National

- **Centers for Disease Control and Prevention**
<http://www.cdc.gov>
- **U.S. Department of Health and Human Services**
<http://www.hhs.gov/>
- **National Institute of Health**
<http://www.nih.gov/>

(This page intentionally left blank)

DRAFT

Endnotes

¹ Information from survey compiled by planning team.

² Information from Pierce County GIS application, CountyView Pro (7/06).

³ "Population" from Census 2000, Office of Financial Management.

⁴ "Projected Population Change (%)" from Pierce County Buildable Lands Report, Sept 2002.

⁵ "Projected Population Density" is based on an assumption of the jurisdiction maintaining the same geographic area and boundaries. It does not consider changes in annexation, district mergers, etc.

⁶ "Projected 2017 Population" from Pierce County Buildable Lands Report, Sept 2002.

⁷ Information from Pierce County GIS application, CountyView Pro projected for 2007.

⁸ Information obtained from Organization from Infrastructure Matrix.

⁹ Information obtained from Organization from current Budget.

¹⁰ Non-Capital

¹¹ Non-Capital

¹² Information from Census 2000, Office of Financial Management.

¹³ Information from Census 2000, Office of Financial Management.

DRAFT