

SECTION 2

REGION 5 HAZARD MITIGATION PLAN DYNAMIC FAMILY SERVICES PROFILE SECTION

Table of Contents

TABLE OF CONTENTS	1
MISSION STATEMENT	2
SERVICES SUMMARY	2
HISTORY	4
GEO-POLITICAL SUMMARY	5
POPULATION SUMMARY	7
DEMOGRAPHICS.....	7
SPECIAL POPULATIONS	7
INFRASTRUCTURE SUMMARY	8
GENERAL	8
ORGANIZATION INFRASTRUCTURE	8
ECONOMIC SUMMARY	9
RESOURCE DIRECTORY	10
REGIONAL.....	10
NATIONAL.....	10
ENDNOTES.....	12

Mission Statement

The Mission of Dynamic Family Services is as follows:

Unlocking potential...one child at a time

Services Summary

Dynamic Family Services was founded in the year 1980.

Dynamic Family Services provides the following services through their own capabilities:

Table 2-1 Summary of Services¹

HEALTH SERVICES SUMMARY – Dynamic Family Services			
Health Service	Y/N	Health Service	Y/N
Behavior Health	N	Hyperbaric Medicine Services	N
Involuntary-Forensic		Immunization Services	N
Involuntary-General		Infusion Center	N
Involuntary-Geriatric		Inpatient Rehabilitation Services	N
Voluntary		Laboratory Services	N
Blood Services	N	Lifeline	N
Whole Blood Donations		Mental Health Services	N
Platelet Apheresis Donations		Inpatient	
Automated Double Red Cell Program		Outpatient	
Total Plasma Exchange		Neurosciences	N
Red Blood Cell Exchanges		Gamma Knife® Technology	
White Blood Cell or Platelet Depletion		Nutrition Education Services	Y
Autologous Donations		Occupational Therapy Services	Y
Therapeutic Phlebotomy		Oral Motor Feeding Services	Y
Stem Cell Program		Orthopedics	N
Burn Services	N	Joint Replacement	
Cancer Center	N	Orthotic Casting & Fitting	Y
Oncology (inpatient)		Pediatrics	Y
Oncology (outpatient)		Inpatient	
Case Management		Intensive Care	
Radiation Therapy		Surgery	
Consulting Nurse	N	Therapy & Educational Services	Y
Critical Care Services	N	Physical Therapy Services	Y
Coronary Care			
Intensive Care		Sleep Disorders Centers	N
Progressive Care		Speech Language Therapy Services	Y

HEALTH SERVICES SUMMARY – Dynamic Family Services			
Diabetes Services	N	Surgical Services	N
Diagnostic Imaging Services	N		
Ultrasound			
CT Scan		Trauma Services	N
MRI		Level I	
Dialysis Services (Nephrology)	N	Level II	
Community Outreach		Level III	
Emergency		Level IV	
Outpatient		Trauma Clinic	
Inpatient		Urgent Care	N
Education and Support Services	Y		
Emergency Services	N		
Level II Emergency		Weight Loss Services	N
Level III Emergency		Surgical Weight Loss	
Level IV Emergency			
Level V Emergency			
EMS			
Enterostomal Therapy	N	Women’s Care Services	N
Eye Care	N	Family Birth Center	
Gastroenterology Services	N	Level I Nursery	
Heart & Vascular Center	N	Level II Nursery	
Cardiothoracic Surgery		Prenatal Services	
Cardiac Rehab Program		Wound Care Services	N
Cardiopulmonary Services			
Heart Failure Clinic			

History

Children's Therapy Center was founded in 1979 by pediatric therapists recognizing the need in South King County for a facility that could enhance the development of children with disabilities through the provision of quality early intervention services and parent training. Our mission is to maximize the potential of children with disabilities by providing individualized, family-centered intervention services. Our ultimate goal is to give children functional skills that will help them today while decreasing their need for future services. Our program is unique in that parents and other caregivers participate in all therapy and special education programs so they can carry on the child's program at home and meet other parents of special needs children.

Through dedication, passion, and community support, Children's Therapy Center has grown into *Dynamic Family Services* - a nonprofit consortium of organizations collaborating to empower children and families. The consortium is currently comprised of [Children's Therapy Center](#), [South King Early Intervention Program](#), [Dynamic Orthotic Systems](#), and [SPIO](#).

DRAFT

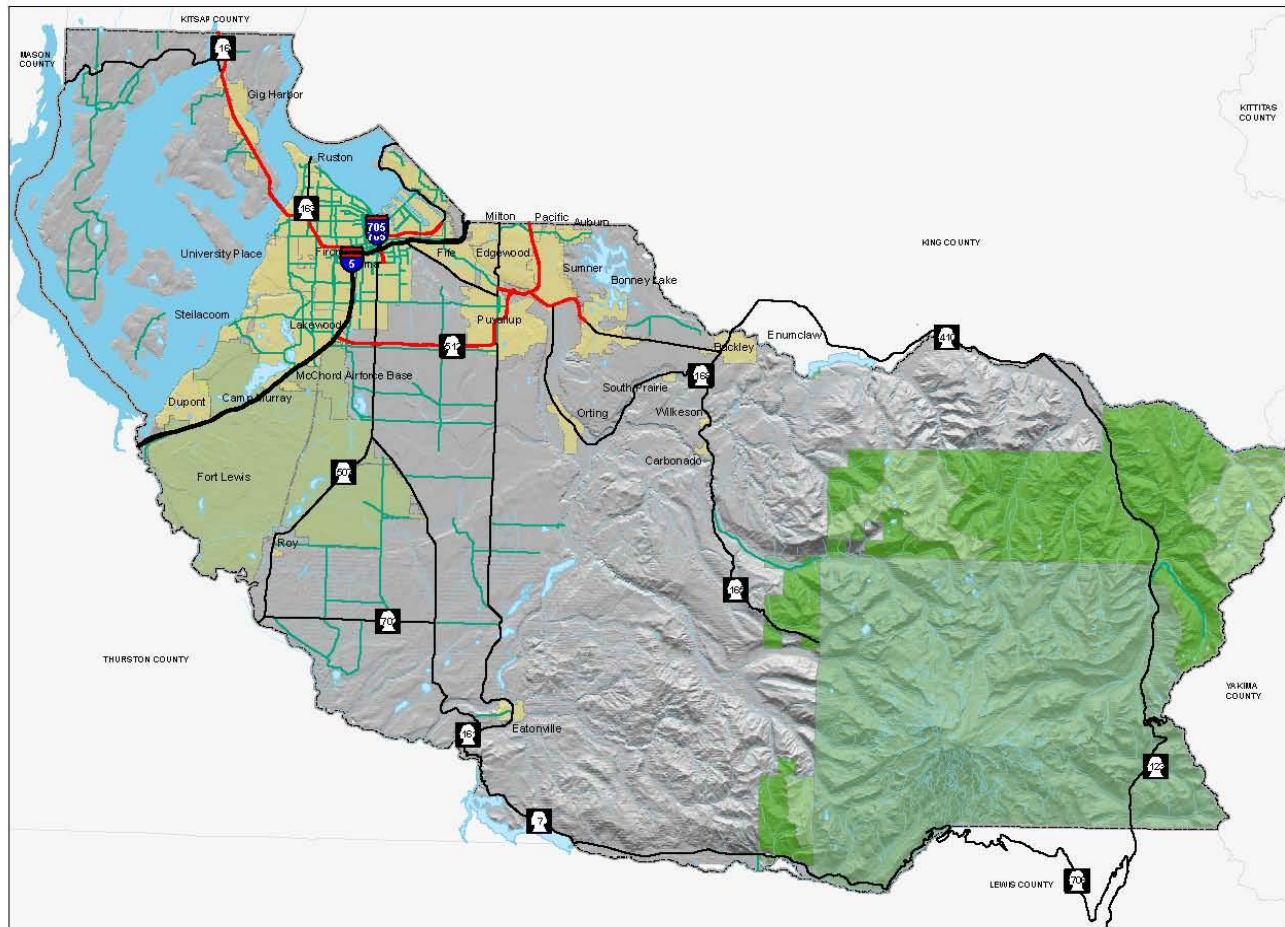
Geo-Political Summary

Table 2-2 Geo-Political Summary²

Organization	Area (sq mi)	Elevation Range (ft.)	Major Water Features	Regional Partners	
				Shared Borders	Land Use Authorities
Region 5 Health & Medical Mitigation Plan	1,794	0-14,410'	<ul style="list-style-type: none"> • White/ Puyallup Watershed • Chambers Clover Watershed • Nisqually Watershed • Kitsap/Key Peninsula-Gig Harbor-Islands Watershed 	<ul style="list-style-type: none"> • Thurston • Lewis • Mason • Kitsap • King • Yakima 	<ul style="list-style-type: none"> • Unincorporated Pierce County • Tacoma • Gig Harbor • Fircrest • Lakewood • Ruston • Milton • Edgewood • Bonney-Lake • Fife • Puyallup Tribe • Auburn • Pacific • Sumner • Orting • Carbonado • Buckley • Wilkeson • South Prairie • Eatonville • Roy • DuPont • Steilacoom • University Place

Map 2- 1 Pierce County - Basemap

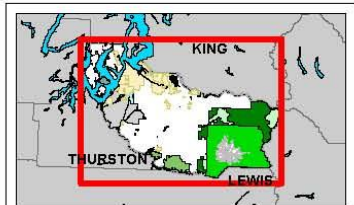
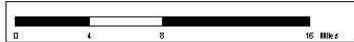
PIERCE COUNTY - BASEMAP



Legend

- CITIES
- MILITARY
- NATIONAL FOREST
- NATIONAL PARK
- WILDERNESS AREA
- WATER BODY
- RIVERS/STREAMS
- Limited Access
- Limited Access State Routes
- Other State Routes
- Arterials

The map features are approximate and are included only to provide a location of said feature. Additional features that have not been mapped may be present. This is not a warranty. The County assumes no liability or guarantee associated with actual use. ALL DATA IS EXPRESSLY PROVIDED AS IS AND WITH ALL FAULTS. THE COUNTY MAKES NO WARRANTY OF FITNESS FOR A PARTICULAR PURPOSE.



August 15, 2009



Population Summary

Demographics

Table 2-3 County Population^{3,4,5,6}

Region 5	Population	Population Density (people/sq mi)	Population Served	Projected Year 2017 Population Change (%)	Projected Population Density	Projected 2017 Population Served
Region 5	700,820	418	700,820	1.04%	435	729,471

Table 2-4 Clients Served⁷

Organization	Average Clients Served/Year
Dynamic Family Services	1,859 Clients Served – 7/1/08 to 6/30/09

Special Populations

Table 2-5 Special Populations⁸

Organization	Total Clients	Clients 65 Plus	% of Total	Clients Under 18	% of Total
Region 5	700,820	71,620	10.2%	190,569	27.2%
WA State	5,894,121	662,148	11.2%	1,513,843	25.7%

Infrastructure Summary

General

Table 2-6 Parcel Summary⁹

Organization	# Parcels	Assessed Land Value Total (\$)	Avg Land Value (\$/sq mile)	Improvement Value Total (\$)	Avg Improvement Value (\$/parcel)
Dynamic Family Services	1	\$228,000	\$228,000	\$614,200	\$614,200
Region 5	292,666	\$39,054,414,761	\$133,444	\$47,992,756,413	\$163,984.73

Organization	Total Assessed Value	Average Assessed Value
Dynamic Family Services	\$842,200	\$842,200
Region 5	\$87,047,171,174	\$297,428

Organization Infrastructure

The following table shows the overview of infrastructure owned by the Dynamic Family Services. The infrastructure is categorized according to the infrastructure sectors as designated by the Department of Homeland Security. This table is intended as a summary only.

For further details on what is included in the Department of Homeland Security infrastructure sectors, please see the Process Section 1.

Table 2-7 Owned Infrastructure¹⁰

Total Infrastructure	Emerg. Services	Tele-comm	Trans- portation	Public Health	Govern- ment	Commer- cial	Total Value (\$)
1				1			\$842,200

Economic Summary

Table 2-8 Fiscal Summary¹¹

Organization	Operating Costs (per month)	Operating Budgeted Revenues ¹²	Operating Budgeted Expenditures ¹³	Fund Balance as % of Operating Cost	Avg Fund Balance (5 yrs)
Dynamic Family Services	\$399,800	\$5,100,000	\$4,800,000	15%	\$683,000

Table 2-9 Pierce County Employment Profile¹⁴

Employment Category (SIC)	Pierce County
Agriculture, Forestry, Fishing, Mining and Hunting	3,126
Construction	24,340
FIRES (Finance, Insurance, Real Estate, and Services)	18,212
Wholesale Trade	13,919
Transportation and Warehousing and Utilities	21,555
Manufacturing	39,511
Retail	39,408
Education, Health and Social Services	65,256
Professional, Scientific, Management, Administrative, Waste Management	23,095
Public Administration	18,363

Table 2-10 Unemployment Rate¹⁵

Organization	Unemployment Rate
Region 5	8.9%
WA State	9.2%

Resource Directory

Regional

- **Dynamic Family Services**
<http://www.dynamicfamilies.org>
- **Tacoma Pierce County Health Department**
<http://www.tpchd.org>
- **Washington State Department of Health**
<http://www.doh.wa.gov>
- **Pierce County Government**
<http://www.piercecountywa.org/PC/>
- **Pierce County DEM**
<http://www.piercecountywa.org/mitigation>
- **Municipal Research & Services Center of Washington (MRSC)**
<http://www.mrsc.org>

National

- **Centers for Disease Control and Prevention**
<http://www.cdc.gov>
- **U.S. Department of Health and Human Services**
<http://www.hhs.gov/>
- **National Institute of Health**
<http://www.nih.gov/>

(This page intentionally left blank)

DRAFT

Endnotes

-
- ¹ Information from survey compiled by planning team.
 - ² Information from Pierce County GIS application, CountyView Pro (7/06).
 - ³ “Population” from Census 2000, Office of Financial Management.
 - ⁴ “Projected Population Change (%)” from Pierce County Buildable Lands Report, Sept 2002.
 - ⁵ “Projected Population Density” is based on an assumption of the jurisdiction maintaining the same geographic area and boundaries. It does not consider changes in annexation, district mergers, etc.
 - ⁶ “Projected 2017 Population” from Pierce County Buildable Lands Report, Sept 2002.
 - ⁷ Information provided from specific Health or Medical Organization.
 - ⁸ Information from Pierce County GIS application, CountyView Pro projected for 2007.
 - ⁹ Information from Pierce County GIS application, CountyView Pro projected for 2007.
 - ¹⁰ Information obtained from Organization from Infrastructure Matrix.
 - ¹¹ Information obtained from Organization from current Budget.
 - ¹² Non-Capital
 - ¹³ Non-Capital
 - ¹⁴ Information from Census 2000, Office of Financial Management.
 - ¹⁵ Information from Census 2000, Office of Financial Management.

DRAFT