

SECTION 2

REGION 5 HAZARD MITIGATION PLAN FRANCISCAN HEALTH SYSTEM PROFILE SECTION

Table of Contents

TABLE OF CONTENTS	1
MISSION STATEMENT	2
VISION	2
SERVICES SUMMARY	2
HISTORY	4
GEO-POLITICAL SUMMARY	6
POPULATION SUMMARY	8
DEMOGRAPHICS	8
SPECIAL POPULATIONS	8
INFRASTRUCTURE SUMMARY	9
GENERAL	9
ORGANIZATION INFRASTRUCTURE	9
ECONOMIC SUMMARY	10
RESOURCE DIRECTORY	11
REGIONAL	11
NATIONAL	11
ENDNOTES	12

Mission Statement

The Mission of the Franciscan Health System (SJMC, SCH, SAH, FMG) is as follows:

To nurture the healing ministry of the Church by bringing it new life, energy, and viability in the twenty-first century.

Fidelity to the Gospel urges us to emphasize human dignity and social justice as we move toward the creation of healthier communities.

Vision

The vision of the Franciscan Health System (SJMC, SCH, SAH, FMG) is as follows:

We are the South Sound’s first choice for healing of mind, body and spirit.

Services Summary

Franciscan Health System was established in the year 1891.

Franciscan Health System provides the following services through their own capabilities:

Table 2-1 Summary of Services¹

HEALTH SERVICES SUMMARY – Franciscan Health System			
Health Service	Y/N	Health Service	Y/N
Behavior Health	Y	Hyperbaric Medicine Services	Y
Involuntary-Forensic		Immunization Services	
Involuntary-General		Infusion Center	
Involuntary-Geriatric		Inpatient Rehabilitation Services	Y
Voluntary		Laboratory Services	Y
Blood Services		Lifeline	Y
Whole Blood Donations		Mental Health Services	Y
Platelet Apheresis Donations		Inpatient	
Automated Double Red Cell Program		Outpatient	
Total Plasma Exchange		Neurosciences	Y
Red Blood Cell Exchanges		Gamma Knife® Technology	Y
White Blood Cell or Platelet Depletion		Nutrition Education Services	Y
Autologous Donations		Occupational Health Services	Y
Therapeutic Phlebotomy		Orthopedics	Y
Stem Cell Program		Joint Replacement	Y
Burn Services		Pain Management	Y
Cancer Center	Y	Pathology Services	Y
Oncology (inpatient)	Y	Pediatrics	Y
Oncology (outpatient)	Y	Inpatient	Y

HEALTH SERVICES SUMMARY			
Case Management	Y	Intensive Care	Y
Radiation Therapy	Y	Surgery	Y
Consulting Nurse	Y	Pharmaceutical Services	Y
Critical Care Services	Y	Coumadin Clinic	Y
Coronary Care	Y	Primary Care	Y
Intensive Care	Y	Sleep Disorders Centers	Y
Progressive Care	Y	Spiritual Care	Y
Diabetes Services	Y	Surgical Services	Y
Diagnostic Imaging Services	Y	Inpatient	Y
Ultrasound	Y	Outpatient	Y
CT Scan	Y	Trauma Services	Y
MRI	Y	Level I	
Dialysis Services (Nephrology)	Y	Level II	
Community Outreach		Level III	
Emergency		Level IV	
Outpatient		Trauma Clinic	
Inpatient		Urgent Care	Y
Education and Support Services	Y		
Emergency Services	Y		
Level II Emergency		Weight Loss Services	Y
Level III Emergency		Surgical Weight Loss	Y
Level IV Emergency			
Level V Emergency			
EMS			
Enterostomal Therapy		Women's Care Services	Y
Eye Care	Y	Family Birth Center	Y
Gastroenterology Services	Y	Level I Nursery	
Heart & Vascular Center	Y	Level II Nursery	
Cardiothoracic Surgery	Y	Prenatal Services	Y
Cardiac Rehab Program	Y	Wound Care Services	Y
Cardiopulmonary Services	Y		
Heart Failure Clinic	Y		

History

Since the Sisters of St. Francis of Philadelphia founded St. Joseph Hospital in 1891 (now St. Joseph Medical Center), Franciscan Health System has grown with the enduring goal of fulfilling the spiritual, emotional and physical needs of those we serve. Get a glimpse of our rich history in this pictorial timeline.

1891 - In 1891 the Sisters of St. Francis of Philadelphia founded St. Joseph Hospital, Tacoma's first Catholic hospital dedicated to healing body, mind and spirit. In keeping with the mission of St. Francis of Assisi, the Sisters at St. Joseph ministered to all people, regardless of race, religion or financial status. In 1899, in response to a greater need for services, St. Joseph Hospital expanded from 60 to 200 beds.

1900 - In 1900, a training school for nurses was established at St. Joseph Hospital, offering a two-and-a-half year course of instruction guided by school founders Sisters M. Zacharia and M. Crucifixa from Philadelphia.

1906 - In the early 20th century, women began choosing to have their babies in hospitals. In this 1906 photograph, student nurse Minnie Rose tends to a newborn.

1915 - With the advent of scientific medicine, St. Joseph Hospital moved into a five-story, modern hospital building occupying an entire block along I Street between South 18th and South 19th streets. The facility eventually had capacity for 240-300 private and semi-private beds and was a center for advanced and specialized care within the community.

1949 - In 1944 Enumclaw Community Hospital was incorporated and fundraising began to build the facility. The 22-bed hospital opened in 1949. The facility was renamed Enumclaw Regional Hospital and would later be acquired by Franciscan Health System.

1961 - Established in 1961 as Lakewood General Hospital, the facility would later be acquired by Franciscan Health System and renamed St. Clare Hospital.

1974 - Completed in 1974 and expanded with a four-story medical pavilion in 1985, the St. Joseph Medical Center tower still occupies a prominent place in the Tacoma skyline.

1990 - In 1990, St. Francis Hospital was built in Federal Way. St. Francis joined St. Clare Hospital, acquired in 1990, and St. Joseph Medical Center to form Franciscan Health System.

1999 - The physician-led Franciscan Medical Group formed in 1999 as a part of Franciscan Health System with six clinics.

2002 - The Outpatient Center at St. Francis Hospital opened in 2002, offering diagnostic imaging, day surgery, GI lab, radiation oncology and rehabilitation services.

2004 - The Outpatient Center at St. Joseph Medical Center, opened in 2004, features the newest medical technology, a serene healing environment, an efficient patient admissions process and access to a broad range of services.

2005 - Franciscan Hospice House in University Place, opened in 2005, is the only inpatient hospice-care facility in the South Sound region. Hospice House is part of Franciscan Hospice and Palliative Care, which also provides comprehensive in-home hospice services.

2005 - St. Clare Specialty Center, a state-of-the-art medical office building connected to St. Clare Hospital, opened in 2005. The Specialty Center houses physicians' offices and several of the hospital's outpatient programs.

2006 - In 2006, Franciscan Medical Group opened its 35th clinic, St. Anthony Prompt Care in Gig Harbor. The medical group has become a network of primary- and specialty-clinics located in communities throughout Pierce, South King and Kitsap counties.

2007 - In 2007 Enumclaw Regional Hospital joined Franciscan Health System. The partnership combines the hospital's nearly 60-year tradition of medical excellence with the system's resources and advanced technology to better serve the growing community. Construction on a new facility began in 2008.

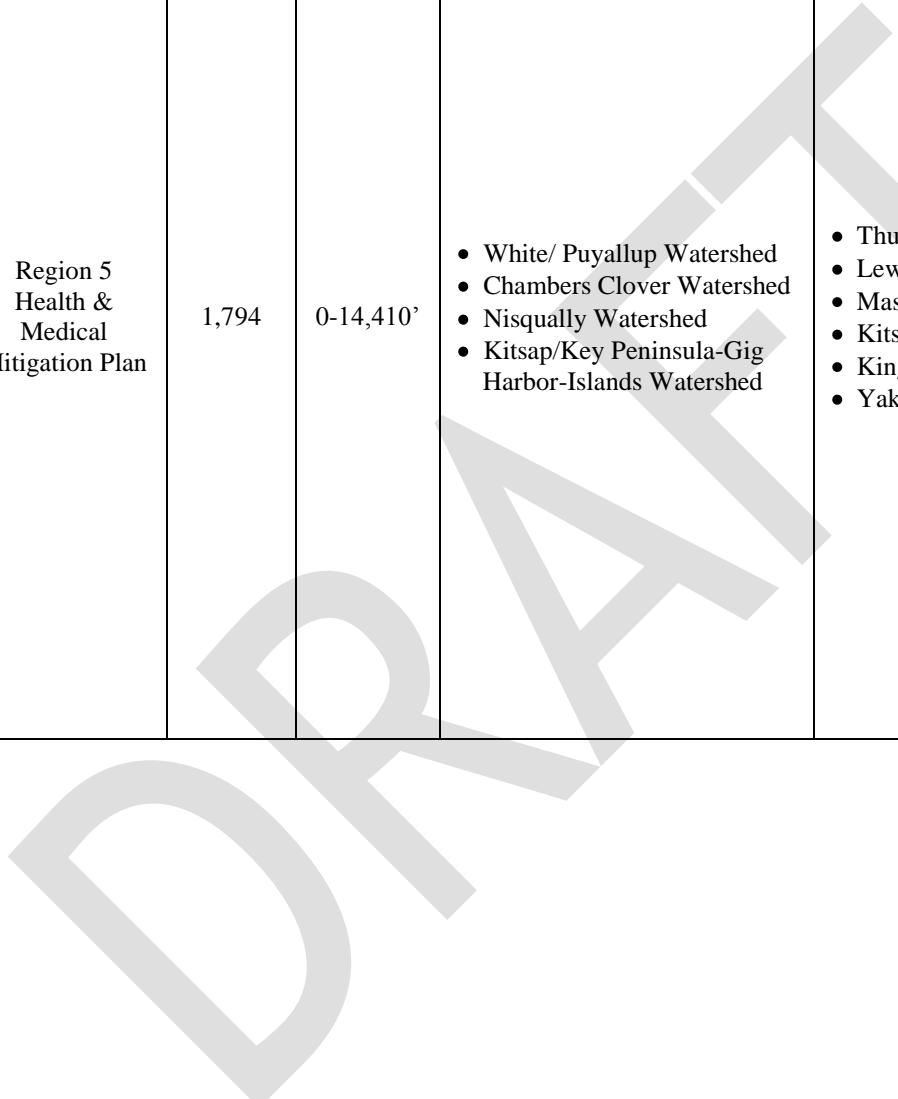
2009 - In 2007, construction began on St. Anthony Hospital in Gig Harbor. The 80-bed hospital, which will provide a broad range of life-saving emergency, medical and surgical services, opened March 2009. A sky bridge connects the hospital with the Milgard Medical Pavilion.

DRAFT

Geo-Political Summary

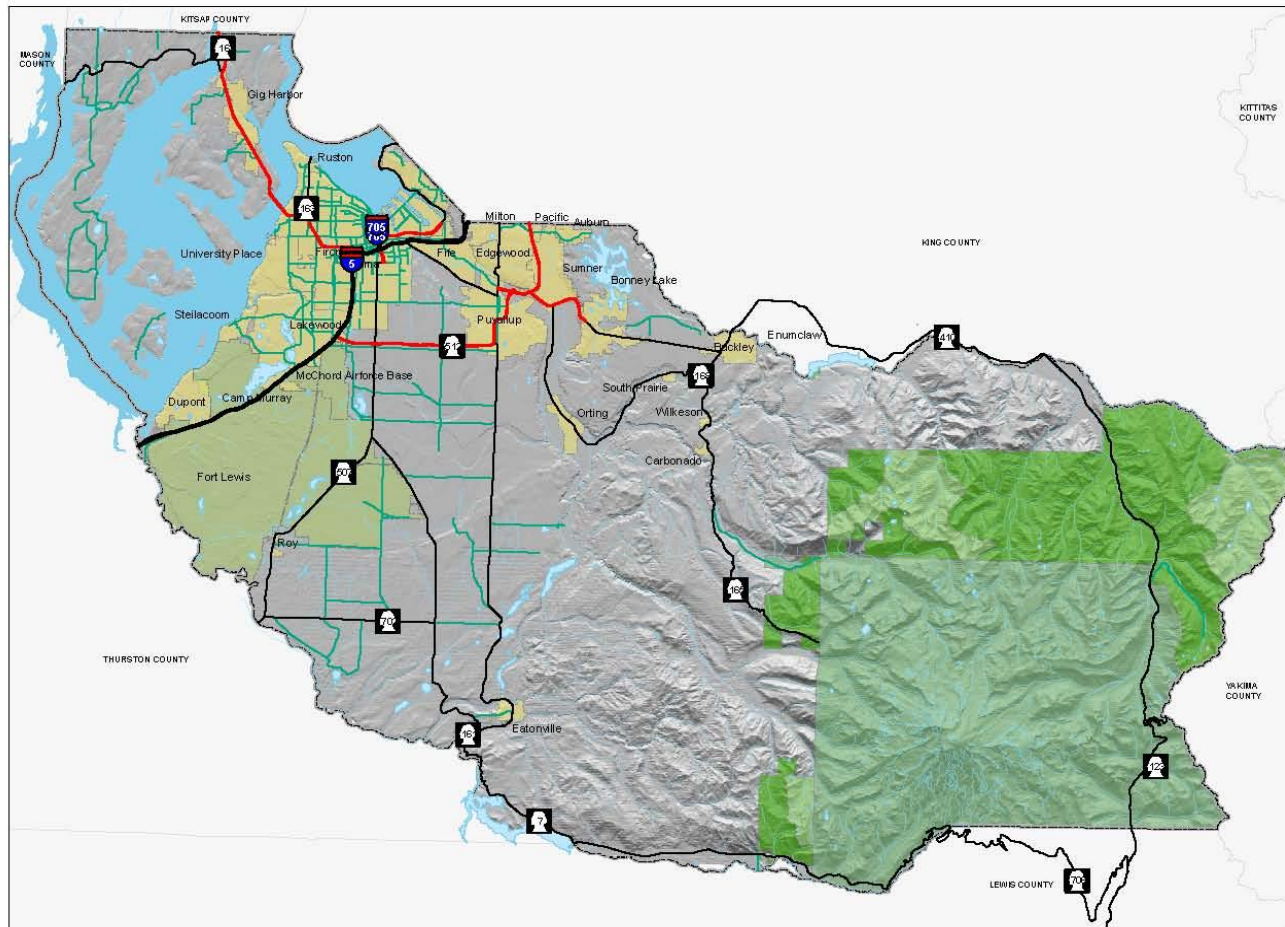
Table 2-2 Geo-Political Summary²

Organization	Area (sq mi)	Elevation Range (ft.)	Major Water Features	Regional Partners	
				Shared Borders	Land Use Authorities
Region 5 Health & Medical Mitigation Plan	1,794	0-14,410'	<ul style="list-style-type: none"> • White/ Puyallup Watershed • Chambers Clover Watershed • Nisqually Watershed • Kitsap/Key Peninsula-Gig Harbor-Islands Watershed 	<ul style="list-style-type: none"> • Thurston • Lewis • Mason • Kitsap • King • Yakima 	<ul style="list-style-type: none"> • Unincorporated Pierce County • Tacoma • Gig Harbor • Fircrest • Lakewood • Ruston • Milton • Edgewood • Bonney-Lake • Fife • Puyallup Tribe • Auburn • Pacific • Sumner • Orting • Carbonado • Buckley • Wilkeson • South Prairie • Eatonville • Roy • DuPont • Steilacoom • University Place



Map 2- 1 Pierce County - Basemap

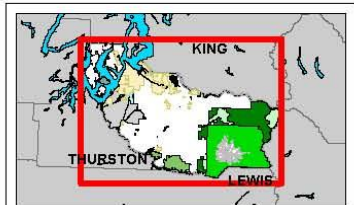
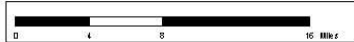
PIERCE COUNTY - BASEMAP



Legend

- CITIES
- MILITARY
- NATIONAL FOREST
- NATIONAL PARK
- WILDERNESS AREA
- WATER BODY
- RIVERS/STREAMS
- Limited Access
- Limited Access State Routes
- Other State Routes
- Arterials

The map features are approximate and are included only to provide a location of said feature. Additional features that have not been mapped may be present. This is not a warranty. The County assumes no liability or guarantee associated with actual use. ALL DATA IS EXPRESSLY PROVIDED AS IS AND WITH ALL FAULTS. THE COUNTY MAKES NO WARRANTY OF FITNESS FOR A PARTICULAR PURPOSE.



August 15, 2009



Population Summary

Demographics

Table 2-3 County Population^{3,4,5,6}

Region 5	Population	Population Density (people/sq mi)	Population Served	Projected Year 2017 Population Change (%)	Projected Population Density	Projected 2017 Population Served
Region 5	700,820	418	700,820	1.04%	435	729,471

Table 2-4 Clients Served⁷

Organization	Average Clients Served/Year
SJMC	486,497
SCH	77,915
SAH	9,016
FMG PC	415,065
TOTAL	988,493

Special Populations

Table 2-5 Special Populations⁸

Organization	Total Clients	Clients 65 Plus	% of Total	Clients Under 18	% of Total
Region 5	700,820	71,620	10.2%	190,569	27.2%
WA State	5,894,121	662,148	11.2%	1,513,843	25.7%

Infrastructure Summary

General

Table 2-6 Parcel Summary⁹

Organization	# Parcels	Assessed Land Value Total (\$)	Avg. Land Value (\$/sq mile)	Improvement Value Total (\$)	Avg Improvement Value (\$/parcel)
Franciscan Health System	22	\$6,037,100	\$274,414	\$79,597,600	\$3,618,073
Region 5	292,666	\$39,054,414,761	\$133,444	\$47,992,756,413	\$163,984.73

Organization	Total Assessed Value	Average Assessed Value
Franciscan Health System	\$86,504,723	\$3,932,033
Region 5	\$87,047,171,174	\$297,428

Organization Infrastructure

The following table shows the overview of infrastructure owned by the Franciscan Health System. The infrastructure is categorized according to the infrastructure sectors as designated by the Department of Homeland Security. This table is intended as a summary only.

For further details on what is included in the Department of Homeland Security infrastructure sectors, please see the Process Section 1.

Table 2-7 Owned Infrastructure¹⁰

Total Infrastructure	Emerg. Services	Tele-comm	Trans- portation	Public Health	Govern- ment	Commer- cial	Total Value (\$)
58	0	0	0	58	0	0	\$86,504,723

Economic Summary

Table 2-8 Fiscal Summary¹¹

Organiza- tion ¹²	Operating Costs (per month)	Operating Budgeted Revenues ¹³	Operating Budgeted Expenditures ¹⁴	Fund Balance as % of Operating Cost	Avg Fund Balance (5 yrs)
SJMC	\$41,845,781	\$555,136,000	\$521,969,778	48%	\$231,352,387
SCH	\$12,120,389	\$142,483,148	\$143,132,127	48%	\$63,997,931
SAH	\$7,824,573	\$37,108,000	\$35,377,593	167%	\$52,240,916
FMG PC	\$3,981,612	\$44,961,951	\$55,117,541	10%	\$11,078,237

Table 2-9 Pierce County Employment Profile¹⁵

Employment Category (SIC)	Pierce County
Agriculture, Forestry, Fishing, Mining and Hunting	3,126
Construction	24,340
FIRES (Finance, Insurance, Real Estate, and Services)	18,212
Wholesale Trade	13,919
Transportation and Warehousing and Utilities	21,555
Manufacturing	39,511
Retail	39,408
Education, Health and Social Services	65,256
Professional, Scientific, Management, Administrative, Waste Management	23,095
Public Administration	18,363

Table 2-10 Unemployment Rate¹⁶

Organization	Unemployment Rate
Region 5	8.9%
WA State	9.2%

Resource Directory

Regional

- **Franciscan Health System**
<http://www.fhshealth.org>
- **Tacoma Pierce County Health Department**
<http://www.tpchd.org>
- **Washington State Department of Health**
<http://www.doh.wa.gov>
- **Pierce County Government**
<http://www.piercecountywa.org/PC/>
- **Pierce County DEM**
<http://www.piercecountywa.org/mitigation>
- **Municipal Research & Services Center of Washington (MRSC)**
<http://www.mrsc.org>

National

- **Centers for Disease Control and Prevention**
<http://www.cdc.gov>
- **U.S. Department of Health and Human Services**
<http://www.hhs.gov/>
- **National Institute of Health**
<http://www.nih.gov/>

Endnotes

-
- ¹ Information from survey compiled by planning team.
- ² Information from Pierce County GIS application, CountyView Pro (7/06).
- ³ “Population” from Census 2000, Office of Financial Management.
- ⁴ “Projected Population Change (%)” from Pierce County Buildable Lands Report, Sept 2002.
- ⁵ “Projected Population Density” is based on an assumption of the jurisdiction maintaining the same geographic area and boundaries. It does not consider changes in annexation, district mergers, etc.
- ⁶ “Projected 2017 Population” from Pierce County Buildable Lands Report, Sept 2002.
- ⁷ Information provided from specific Health or Medical Organization.
- ⁸ Information from Pierce County GIS application, CountyView Pro projected for 2007.
- ⁹ Information from Pierce County GIS application, CountyView Pro projected for 2007.
- ¹⁰ Information obtained from Organization from Infrastructure Matrix.
- ¹¹ Information obtained from Organization from current Budget.
- ¹² SJMC=St Joseph Medical Center, SCH=St Claire Hospital, SAH=St Anthony Hospital, FMG PC=Franciscan Medical Group-Pierce County
- ¹³ Non-Capital
- ¹⁴ Non-Capital
- ¹⁵ Information from Census 2000, Office of Financial Management.
- ¹⁶ Information from Census 2000, Office of Financial Management.

DRAFT