

SECTION 2



REGION 5 HAZARD MITIGATION PLAN GROUP HEALTH PROFILE SECTION

Table of Contents

TABLE OF CONTENTS	1
MISSION STATEMENT	2
SERVICES SUMMARY	2
HISTORY	4
GEO-POLITICAL SUMMARY	6
POPULATION SUMMARY	8
DEMOGRAPHICS.....	8
SPECIAL POPULATIONS	8
INFRASTRUCTURE SUMMARY	9
GENERAL	9
ORGANIZATION INFRASTRUCTURE	9
ECONOMIC SUMMARY	10
RESOURCE DIRECTORY	11
REGIONAL.....	11
NATIONAL.....	11
ENDNOTES.....	12

Mission Statement

The Commitment to Quality of Group Health is as follows:

Mission: Group Health’s mission is to design, finance, and deliver high-quality health care.

Values: In carrying out our mission, we demonstrate these core values: respect, scientific discipline, integrity, pioneering spirit, and stewardship.

Guiding Principle: To promote patient-centered care and innovation, we continually ask ourselves: “What’s next for our patient’s health?”

Services Summary

Group Health was established in the year 1947.

Group Health provides the following services through their own capabilities:

Table 2-1 Summary of Services¹

HEALTH SERVICES SUMMARY – Group Health			
Health Service	Y/N	Health Service	Y/N
Behavior Health	Y	Hyperbaric Medicine Services	N
Involuntary-Forensic	N	Immunization Services	N
Involuntary-General	N	Infusion Center	N
Involuntary-Geriatric	N	Inpatient Rehabilitation Services	N
Voluntary	Y	Laboratory Services	Y
Blood Services	N	Lifeline	N
Whole Blood Donations	N	Mental Health Services	N
Platelet Apheresis Donations	N	Inpatient	N
Automated Double Red Cell Program	N	Outpatient	N
Total Plasma Exchange	N	Neurosciences	N
Red Blood Cell Exchanges	N	Gamma Knife® Technology	N
White Blood Cell or Platelet Depletion	N	Nutrition Education Services	N
Autologous Donations	N	Occupational Health Services	Y
Therapeutic Phlebotomy	N	Orthopedics	Y
Stem Cell Program	N	Joint Replacement	N
Burn Services	N	Pain Management	N
Cancer Center	N	Pathology Services	N
Oncology (inpatient)	N	Pediatrics	Y
Oncology (outpatient)	Y	Inpatient	N
Case Management	N	Intensive Care	N
Radiation Therapy	N	Surgery	N

HEALTH SERVICES SUMMARY – Group Health			
Consulting Nurse	N	Pharmaceutical Services	Y
Critical Care Services	N	Coumadin Clinic	N
Coronary Care	N	Primary Care	Y
Intensive Care	N	Sleep Disorders Centers	Y
Progressive Care	N	Spiritual Care	N
Diabetes Services	N	Surgical Services	N
Diagnostic Imaging Services	Y	Inpatient	N
Ultrasound	Y	Outpatient	Y
CT Scan	Y	Trauma Services	N
MRI	Y	Level I	N
Dialysis Services (Nephrology)	N	Level II	N
Community Outreach	N	Level III	N
Emergency	N	Level IV	N
Outpatient	N	Trauma Clinic	N
Inpatient	N	Urgent Care	Y
Education and Support Services	N		
Emergency Services	N		
Level II Emergency	N	Weight Loss Services	N
Level III Emergency	N	Surgical Weight Loss	N
Level IV Emergency	N		
Level V Emergency	N		
EMS	N		
Enterostomal Therapy	N	Women’s Care Services	Y
Eye Care	Y	Family Birth Center	N
Gastroenterology Services	N	Level I Nursery	N
Heart & Vascular Center	N	Level II Nursery	N
Cardiothoracic Surgery	N	Prenatal Services	Y
Cardiac Rehab Program	N	Wound Care Services	N
Cardiopulmonary Services	N		
Heart Failure Clinic	N		

History

In 1947, consumer-governed, prepaid group medical coverage was a radical idea. When Group Health Cooperative began, there was a major gap in health care that left most middle-class people without coverage. Union members, farmers and people from other cooperatives enacted a vision of a progressive, prepaid medical care system.

To offer care, Group Health purchased an existing medical clinic that had its own small hospital. The Medical Security Clinic in downtown Seattle and St. Luke's Hospital on Seattle's Capitol Hill became Group Health's first facilities. On Jan. 1, 1947, Group Health Cooperative of Puget Sound began delivering a new kind of health care. The local medical scene was changing too. Just three months earlier, the University of Washington opened its school of medicine.

Expansion in the '50s and '60s

During the 1950s, the Cooperative moved its medical center next to the Capitol Hill hospital and expanded the hospital. A medical center was opened in Renton. Membership grew to 36,000, about 7 percent of the community population.

The 1960s saw rapid growth in membership as group plans were introduced and Medicare was signed into law. Enrollment surpassed 100,000 in 1967. Facility expansion continued, too, as medical centers sprung up in Burien, downtown Seattle and next to Central Hospital. The hospital continued to expand and modernize, as did existing medical centers.

Groundbreaking Affiliations

More expansion and refinement of Group Health's operations continued in the 1970s. Medical centers opened in Lynnwood, Federal Way, Olympia and Redmond. In 1977, Eastside Hospital opened in Redmond. A central distribution and support facility was built in Renton. Growth continued by absorbing Tacoma's Sound Health Association and its 11,000 members. By the end of 1979, enrollment stood at 277,920.

Continued expansion was coupled with diversity and community-building in the 1980s. Medical center councils were established in 1981 to augment consumer participation. Also that year, Group Health and the University of Washington signed the first affiliation agreement between a health maintenance organization and a university. In 1982, the first agreement was signed to provide care by non-Group Health physicians on Vashon and Maury islands.

Early in 1983, the Board approved creation of a research arm, the Group Health Center for Health Studies (renamed in 2009 to Group Health Research Institute); a patient information service, the Center for Health Promotion; and a charitable foundation, now called the Group Health Foundation. Group Health bought an existing health plan in Spokane, which served other parts of Eastern Washington and was later expanded. Enrollment topped 300,000.

The Politics of the '80s and '90s

In 1984, the first "See" and "Hear" Centers opened. By 1987, an affiliate named Group Health Northwest consolidated services east of the Cascades.

Forming alliances was the hallmark of the 1990s, as health care costs and availability became national political issues. In 1990, Group Health began Group Health Options, Inc., a subsidiary, which offered the Northwest's first point-of-service plan. In 1993, Group Health and Virginia Mason Medical Center entered a "strategic alliance." In October 1994, Group Health membership passed 500,000.

A 1997 alliance with Kaiser Permanente, the nation's largest nonprofit health care system, allowed the two organizations to offer their patients reciprocity for both routine and urgent care, while the organizations retained their independence and separateness.

2000 and Beyond

In 2000, operations throughout Washington and North Idaho combined to become Group Health Cooperative, and we led the way into the new world of electronic health care. Patients at our medical centers can go online to e-mail their doctors, request an appointment, check their benefits and lab results, and more. We implemented electronic medical records, same-day appointments for primary care, self-referrals for many specialties, and group visits.

Today, our physician group has grown to encompass more than 950 physicians in Group Health medical centers and many more contracted medical staff who work in the community. What began as a small, pioneering, community venture more than 60 years ago has evolved into a nationally acclaimed organization that's being recognized as a model for national health care reform.

Geo-Political Summary

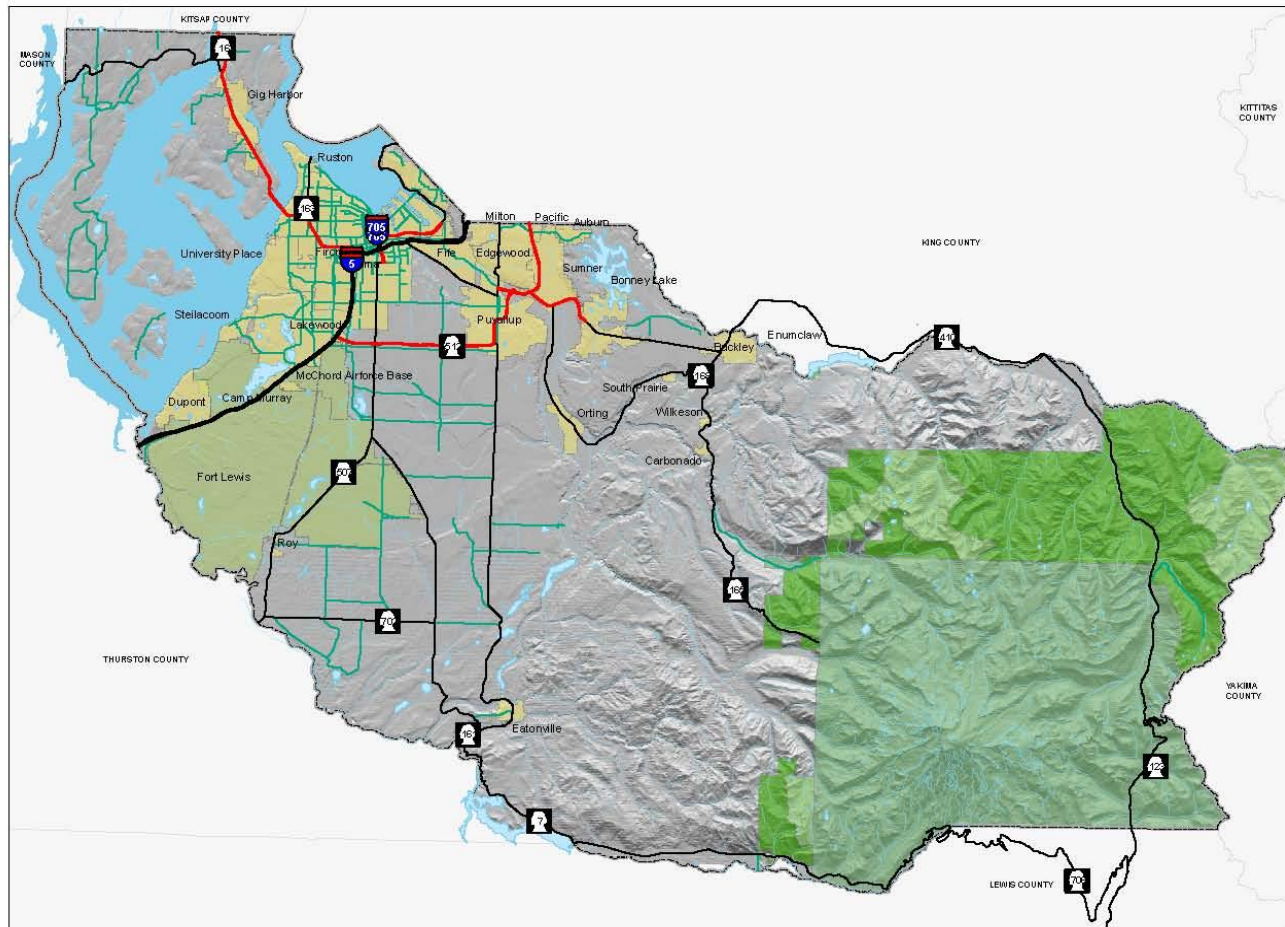
Table 2-2 Geo-Political Summary²

Organization	Area (sq mi)	Elevation Range (ft.)	Major Water Features	Regional Partners	
				Shared Borders	Land Use Authorities
Region 5 Health & Medical Mitigation Plan	1,794	0-14,410'	<ul style="list-style-type: none"> • White/ Puyallup Watershed • Chambers Clover Watershed • Nisqually Watershed • Kitsap/Key Peninsula-Gig Harbor-Islands Watershed 	<ul style="list-style-type: none"> • Thurston • Lewis • Mason • Kitsap • King • Yakima 	<ul style="list-style-type: none"> • Unincorporated Pierce County • Tacoma • Gig Harbor • Fircrest • Lakewood • Ruston • Milton • Edgewood • Bonney-Lake • Fife • Puyallup Tribe • Auburn • Pacific • Sumner • Orting • Carbonado • Buckley • Wilkeson • South Prairie • Eatonville • Roy • DuPont • Steilacoom • University Place

DRAFT

Map 2- 1 Pierce County - Basemap

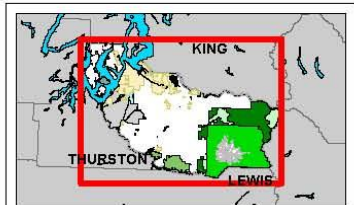
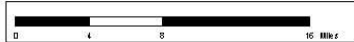
PIERCE COUNTY - BASEMAP



Legend

- CITIES
- MILITARY
- NATIONAL FOREST
- NATIONAL PARK
- WILDERNESS AREA
- WATER BODY
- RIVERS/STREAMS
- Limited Access
- Limited Access State Routes
- Other State Routes
- Arterials

The map features are approximate and are included only to provide a location of said feature. Additional features that have not been mapped may be present. This is not a warranty. The County assumes no liability or guarantee for accuracy or reliability of any data. ALL DATA IS EXPRESSLY PROVIDED "AS IS" AND WITH ALL FAULTS. THE COUNTY MAKES NO WARRANTY OF FITNESS FOR A PARTICULAR PURPOSE.



August 15, 2009



Population Summary

Group Health operates

Demographics

Table 2-3 County Population^{3,4,5,6}

Region 5	Population	Population Density (people/sq mi)	Population Served	Projected Year 2017 Population Change (%)	Projected Population Density	Projected 2017 Population Served
Region 5	700,820	418	700,820	1.04%	435	729,471

Table 2-4 Clients Served⁷

Organization	Average Clients Served/Year	Tacoma Medical Center	Tacoma South Medical Center
Group Health	58,684	14,705	16,229

Special Populations

Table 2-5 Special Populations⁸

Organization	Total Clients	Clients 65 Plus	% of Total	Clients Under 18	% of Total
Group Health	58,864	250	.43	407	.69
Region 5	700,820	71,620	10.2%	190,569	27.2%
WA State	5,894,121	662,148	11.2%	1,513,843	25.7%

Infrastructure Summary

General

Table 2-6 Parcel Summary⁹

Organization	# Parcels	Assessed Land Value Total (\$)	Avg Land Value (\$/sq mile)	Improvement Value Total (\$)	Avg Improvement Value (\$/parcel)
Group Health	6	\$2,543,500	\$423,917	\$30,605,200	\$5,100,867
Region 5	292,666	\$39,054,414,761	\$133,444	\$47,992,756,413	\$163,984.73

Organization	Total Assessed Value	Average Assessed Value
Group Health	\$38,838,666	\$6,473,111
Region 5	\$87,047,171,174	\$297,428

Organization Infrastructure

The following table shows the overview of infrastructure owned by the Group Health. The infrastructure is categorized according to the infrastructure sectors as designated by the Department of Homeland Security. This table is intended as a summary only.

For further details on what is included in the Department of Homeland Security infrastructure sectors, please see the Process Section 1.

Table 2-7 Owned Infrastructure¹⁰

Total Infrastructure	Emerg. Services	Tele-comm	Trans- poration	Public Health	Govern- ment	Commer- cial	Total Value (\$)
2	0	0	0	2	0	0	\$38,838,666

Economic Summary

Table 2-8 Fiscal Summary¹¹

Organization	Operating Costs (per month)	Operating Budgeted Revenues ¹²	Operating Budgeted Expenditures ¹³	Fund Balance as % of Operating Cost	Avg Fund Balance (5 yrs)
Group Health	\$458,614	\$918,698	\$5,734,645	N/A	N/A

Table 2-9 Pierce County Employment Profile¹⁴

Employment Category (SIC)	Pierce County
Agriculture, Forestry, Fishing, Mining and Hunting	3,126
Construction	24,340
FIRES (Finance, Insurance, Real Estate, and Services)	18,212
Wholesale Trade	13,919
Transportation and Warehousing and Utilities	21,555
Manufacturing	39,511
Retail	39,408
Education, Health and Social Services	65,256
Professional, Scientific, Management, Administrative, Waste Management	23,095
Public Administration	18,363

Table 2-10 Unemployment Rate¹⁵

Organization	Unemployment Rate
Region 5	6.5%(update)
WA State	6.2%(update)

Resource Directory

Regional

- **Group Health**
<http://www.ghc.org>
- **Tacoma Pierce County Health Department**
<http://www.tpchd.org>
- **Washington State Department of Health**
<http://www.doh.wa.gov>
- **Pierce County Government**
<http://www.piercecountywa.org/PC/>
- **Pierce County DEM**
<http://www.piercecountywa.org/mitigation>
- **Municipal Research & Services Center of Washington (MRSC)**
<http://www.mrsc.org>

National

- **Centers for Disease Control and Prevention**
<http://www.cdc.gov>
- **U.S. Department of Health and Human Services**
<http://www.hhs.gov/>
- **National Institute of Health**
<http://www.nih.gov/>

Endnotes

-
- ¹ Information from survey compiled by planning team.
 - ² Information from Pierce County GIS application, CountyView Pro (7/06).
 - ³ “Population” from Census 2000, Office of Financial Management.
 - ⁴ “Projected Population Change (%)” from Pierce County Buildable Lands Report, Sept 2002.
 - ⁵ “Projected Population Density” is based on an assumption of the jurisdiction maintaining the same geographic area and boundaries. It does not consider changes in annexation, district mergers, etc.
 - ⁶ “Projected 2017 Population” from Pierce County Buildable Lands Report, Sept 2002.
 - ⁷ Information provided from specific Health or Medical Organization.
 - ⁸ Information from Pierce County GIS application, CountyView Pro projected for 2007.
 - ⁹ Information from Pierce County GIS application, CountyView Pro projected for 2007.
 - ¹⁰ Information obtained from Organization from Infrastructure Matrix.
 - ¹¹ Information obtained from Organization from current Budget.
 - ¹² Non-Capital
 - ¹³ Non-Capital
 - ¹⁴ Information from Census 2000, Office of Financial Management.
 - ¹⁵ Information from Census 2000, Office of Financial Management.

DRAFT