

SECTION 2

REGION 5 HAZARD MITIGATION PLAN MADIGAN ARMY MEDICAL CENTER PROFILE SECTION

Table of Contents

TABLE OF CONTENTS	1
MISSION STATEMENT	2
SERVICES SUMMARY	2
GEO-POLITICAL SUMMARY	4
POPULATION SUMMARY	7
DEMOGRAPHICS.....	7
SUMMARY	7
INFRASTRUCTURE SUMMARY	8
GENERAL	8
ORGANIZATION INFRASTRUCTURE	8
ECONOMIC SUMMARY	9
RESOURCE DIRECTORY	10
REGIONAL	10
NATIONAL	10
ENDNOTES.....	11

Mission Statement

The Mission of Madigan Army Medical Center is as follows:

Maintain medical readiness and the health of soldiers, family members and retirees.

Refocus military health care on its outcomes in order to support Army Transformation.

Educate, conduct clinical research, and prepare Army Medical leaders of competence and character.

Services Summary

Madigan Army Medical Center was established in the year 1944.

Madigan Army Medical Center provides the following services through their own capabilities:

Table 2-1 Summary of Services¹

HEALTH SERVICES SUMMARY – Madigan Army Medical Center			
Health Service	Y/N	Health Service	Y/N
Behavior Health		Hyperbaric Medicine Services	No
Involuntary-Forensic	Yes	Immunization Services	Yes
Involuntary-General	Yes	Infusion Center	Yes
Involuntary-Geriatric	No	Inpatient Rehabilitation Services	Yes
Voluntary	Yes	Laboratory Services	Yes
Blood Services		Lifeline	No
Whole Blood Donations	Yes	Mental Health Services	
Platelet Apheresis Donations	Yes	Inpatient	Yes
Automated Double Red Cell Program	No	Outpatient	Yes
Total Plasma Exchange	No	Neurosciences	
Red Blood Cell Exchanges	Yes	Gamma Knife® Technology	No
White Blood Cell or Platelet Depletion	No	Nutrition Education Services	Yes
Autologous Donations	Yes	Occupational Health Services	Yes
Therapeutic Phlebotomy	Yes	Orthopedics	Yes
Stem Cell Program	No	Joint Replacement	Yes
Burn Services	No	Pain Management	Yes
Cancer Center		Pathology Services	Yes
Oncology (inpatient)	Yes	Pediatrics	Yes
Oncology (outpatient)	Yes	Inpatient	Yes
Case Management	Yes	Intensive Care	Yes
Radiation Therapy	Yes	Surgery	Yes

HEALTH SERVICES SUMMARY – Madigan Army Medical Center			
Consulting Nurse	Yes	Pharmaceutical Services	Yes
Critical Care Services		Coumadin Clinic	Yes
Coronary Care	Yes	Primary Care	Yes
Intensive Care	Yes	Sleep Disorders Centers	No
Progressive Care	Yes	Spiritual Care	Yes
Diabetes Services	Yes	Surgical Services	Yes
Diagnostic Imaging Services		Inpatient	Yes
Ultrasound	Yes	Outpatient	Yes
CT Scan	Yes	Trauma Services	
MRI	Yes	Level I	No
Dialysis Services (Nephrology)		Level II	Yes
Community Outreach	Yes	Level III	No
Emergency	Yes	Level IV	No
Outpatient	Yes	Trauma Clinic	No
Inpatient	Yes	Urgent Care	No
Education and Support Services	Yes		
Emergency Services			
Level II Emergency	Yes	Weight Loss Services	Yes
Level III Emergency	No	Surgical Weight Loss	No
Level IV Emergency	No		
Level V Emergency	No		
EMS	Yes		
Enterostomal Therapy	No	Women’s Care Services	
Eye Care	Yes	Family Birth Center	Yes
Gastroenterology Services	Yes	Level I Nursery	Yes
Heart & Vascular Center		Level II Nursery	Yes
Cardiothoracic Surgery	Yes	Prenatal Services	Yes
Cardiac Rehab Program	Yes	Wound Care Services	Yes
Cardiopulmonary Services	Yes		
Heart Failure Clinic	No		

Geo-Political Summary

Table 2-2 Geo-Political Summary²

Organization	Area (sq mi)	Elevation Range (ft.)	Major Water Features	Regional Partners	
				Shared Borders	Land Use Authorities
Region 5 Health & Medical Mitigation Plan	1,794	0-14,410'	<ul style="list-style-type: none"> • White/ Puyallup Watershed • Chambers Clover Watershed • Nisqually Watershed • Kitsap/Key Peninsula-Gig Harbor-Islands Watershed 	<ul style="list-style-type: none"> • Thurston • Lewis • Mason • Kitsap • King • Yakima 	<ul style="list-style-type: none"> • Unincorporated Pierce County • Tacoma • Gig Harbor • Fircrest • Lakewood • Ruston • Milton • Edgewood • Bonney-Lake • Fife • Puyallup Tribe • Auburn • Pacific • Sumner • Orting • Carbonado • Buckley • Wilkeson • South Prairie • Eatonville • Roy • DuPont • Steilacoom • University Place

DRAFT

History³

Colonel Patrick S. Madigan, known as “The Father of Army Neuropsychiatry” was Assistant to the Surgeon General of the United States Army from 1940 to 1943. He died in 1944 and in that year, on September 22, Madigan General Hospital was named in his honor. Colonel Madigan was born February 14, 1887, in Washington, D.C. He was a member of a distinct medical and military family.

Two of his brothers were doctors in the United States Army. He married Mary Shugrue, sister of Dr. John Shugrue, prominent brain surgeon of the Mayo Clinic, who had served at Walter Reed General Hospital. His eldest son, Emmett P. Madigan, served as an Army Medical Corps Officer throughout World War II.

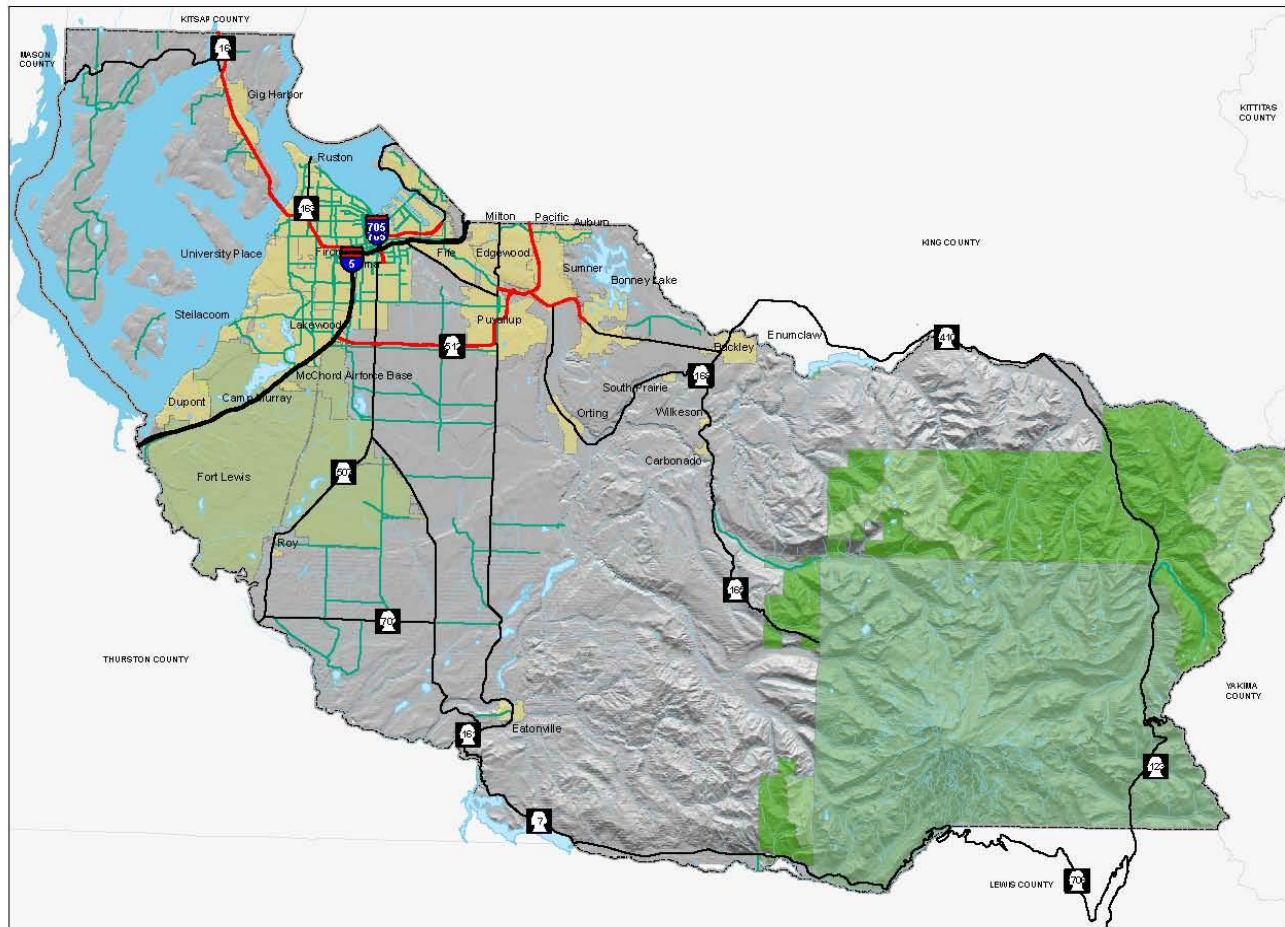
In 1908, Colonel Madigan received his Bachelor of Arts degree from Georgetown University and his Doctor of Medicine degree four years later. He served as an instructor at Georgetown University from 1913 to 1917. During this period he received a Master of Arts degree from Gonzaga University, Spokane, Washington, in 1914. In August 1917 he accepted a commission in the Regular Army and served in France with the 7th Division, 64th Infantry.

After the First World War he remained in the Army, serving as a neuropsychiatrist at Hampton Roads, Virginia and Walter Reed General Hospital until 1926. He then became Chief of Neuropsychiatry at Sternberg General Hospital, Philippines, and in 1929 Chief of Neuropsychiatry at Walter Reed General Hospital.

In addition to his many degrees, Gonzages University conferred the Honorary Degree of Doctor of Laws on Colonel Madigan in recognition of his outstanding administrative work.

Map 2- 1 Pierce County - Basemap

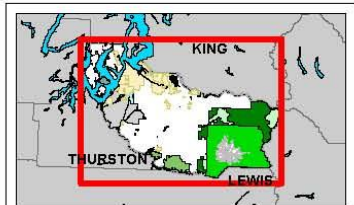
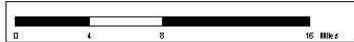
PIERCE COUNTY - BASEMAP



Legend

- CITIES
- MILITARY
- NATIONAL FOREST
- NATIONAL PARK
- WILDERNESS AREA
- WATER BODY
- RIVERS/STREAMS
- Limited Access
- Limited Access State Routes
- Other State Routes
- Arterials

The map features are approximate and are included only to provide a location of said feature. Additional features that have not been mapped may be present. This is not a warranty. The County assumes no liability or guarantee associated with actual use. ALL DATA IS EXPRESSLY PROVIDED AS IS AND WITH ALL FAULTS. THE COUNTY MAKES NO WARRANTY OF FITNESS FOR A PARTICULAR PURPOSE.



August 15, 2009



Population Summary

Demographics

Table 2-3 County Population⁴

Region 5	Population	Population Density (people/sq mi)	Population Served	Projected Year 2017 Population Change (%)	Projected Population Density	Projected 2017 Population Served
Region 5	700,820	418	700,820	1.04%	435	729,471

Summary

There are approximately 160,000 Soldiers, family members and military retirees residing in Madigan's 40-mile catchment area. Madigan's phenomenal health care mission is executed by nearly 4,000 staff members, which include hundreds of civilian and military doctors, nurses, residents, interns and fellows.

DRAFT

Infrastructure Summary

General

Table 2-4 Parcel Summary⁵

Organization	# Parcels	Assessed Value Total (\$)	Land Value (\$/sq mile)	Improvement Value Total (\$)	Avg Improvement Value (\$/parcel)
Madigan Army Medical Center	N/A	N/A	N/A	N/A	N/A
Region 5	292,666	\$39,054,414,761	\$133,444	\$47,992,756,413	\$163,984.73

Organization	Total Assessed Value	Average Assessed Value
Madigan Army Medical Center	\$635,142,890	\$5,337,335
Region 5	\$87,047,171,174	\$297,428

Organization Infrastructure

The following table shows the overview of infrastructure owned by the Madigan Army Medical Center. The infrastructure is categorized according to the infrastructure sectors as designated by the Department of Homeland Security. This table is intended as a summary only.

For further details on what is included in the Department of Homeland Security infrastructure sectors, please see the Process Section 1.

Table 2-5 Owned Infrastructure⁶

Total Infrastructure	Emerg. Services	Tele-comm	Trans- poration	Public Health	Govern- ment	Commer- cial	Total Value (\$)
119	0	0	0	0	119	0	\$635,142,890

Economic Summary

Table 2-6 Pierce County Employment Profile ⁷

Employment Category (SIC)	Pierce County
Agriculture, Forestry, Fishing, Mining and Hunting	3,126
Construction	24,340
FIRES (Finance, Insurance, Real Estate, and Services)	18,212
Wholesale Trade	13,919
Transportation and Warehousing and Utilities	21,555
Manufacturing	39,511
Retail	39,408
Education, Health and Social Services	65,256
Professional, Scientific, Management, Administrative, Waste Management	23,095
Public Administration	18,363

Table 2-7 Unemployment Rate ⁸

Organization	Unemployment Rate
Region 5	8.9%
WA State	9.2%

DRAFT

Resource Directory

Regional

- **Madigan Army Medical Center**
<http://www.mamc.amedd.army.mil>
- **Tacoma Pierce County Health Department**
<http://www.tpchd.org>
- **Washington State Department of Health**
<http://www.doh.wa.gov>
- **Pierce County Government**
<http://www.piercecountywa.org/PC/>
- **Pierce County DEM**
<http://www.piercecountywa.org/mitigation>
- **Office of Financial Management (OFM)**
www.ofm.wa.gov
- **Municipal Research & Services Center of Washington (MRSC)**
<http://www.mrsc.org>

National

- **Centers for Disease Control and Prevention**
<http://www.cdc.gov>
- **U.S. Department of Health and Human Services**
<http://www.hhs.gov/>
- **National Institute of Health**
<http://www.nih.gov/>

Endnotes

¹ Information from survey compiled by Madigan Planning Partner.

² Information from Pierce County GIS application, CountyView Pro (7/06).

³ This information obtained from the MAMC website, December, 2009.

⁴ "Population" from Census 2000, Office of Financial Management.

⁵ Information from Pierce County GIS application, CountyView Pro projected for 2007.

⁶ Information obtained from Organization from Infrastructure Matrix.

⁷ Information from Census 2000, Office of Financial Management.

⁸ Information from Census 2000, Office of Financial Management.

DRAFT