

SECTION 2

REGION 5 HAZARD MITIGATION PLAN MULTICARE HEALTH SYSTEM PROFILE SECTION

Table of Contents

TABLE OF CONTENTS	1
MISSION STATEMENT	2
VISION	2
SERVICES SUMMARY	2
HISTORY	4
GEO-POLITICAL SUMMARY	6
POPULATION SUMMARY	8
DEMOGRAPHICS	8
SPECIAL POPULATIONS	8
INFRASTRUCTURE SUMMARY	9
GENERAL	9
ORGANIZATION INFRASTRUCTURE	9
ECONOMIC SUMMARY	10
RESOURCE DIRECTORY	11
REGIONAL	11
NATIONAL	11
ENDNOTES	12

Mission Statement

The Mission of MultiCare Health System is as follows:

Quality Patient Care

Vision

The vision of MultiCare Health System is as follows:

To create a seamless, easy, valued, and sustainable continuum of health care that enhances the experience of our patients, providers, caregivers and employees.

Services Summary

MultiCare Health System was established in the year 1882.

MultiCare Health System provides the following services through their own capabilities:

Table 2-1 Summary of Services¹

HEALTH SERVICES SUMMARY – MultiCare Health System			
Health Service	Y/N	Health Service	Y/N
Behavior Health		Hyperbaric Medicine Services	
Involuntary-Forensic		Immunization Services	
Involuntary-General		Infusion Center	
Involuntary-Geriatric		Inpatient Rehabilitation Services	
Voluntary		Laboratory Services	Y
Blood Services		Lifeline	
Whole Blood Donations		Mental Health Services	
Platelet Apheresis Donations		Inpatient	
Automated Double Red Cell Program		Outpatient	
Total Plasma Exchange		Neurosciences	
Red Blood Cell Exchanges		Gamma Knife® Technology	
White Blood Cell or Platelet Depletion		Nutrition Education Services	Y
Autologous Donations		Occupational Health Services	Y
Therapeutic Phlebotomy		Orthopedics	
Stem Cell Program		Joint Replacement	
Burn Services		Pain Management	
Cancer Center	Y	Pathology Services	
Oncology (inpatient)	Y	Pediatrics	Y
Oncology (outpatient)	Y	Inpatient	Y
Case Management	Y	Intensive Care	Y
Radiation Therapy	Y	Surgery	Y
Consulting Nurse		Pharmaceutical Services	Y
Critical Care Services	Y	Coumadin Clinic	

HEALTH SERVICES SUMMARY			
Health Service	Y/N	Health Service	Y/N
Coronary Care	Y	Primary Care	Y
Intensive Care	Y	Sleep Disorders Centers	
Progressive Care	Y	Spiritual Care	
Diabetes Services	Y	Surgical Services	Y
Diagnostic Imaging Services	Y	Inpatient	Y
Ultrasound	Y	Outpatient	Y
CT Scan	Y	Trauma Services	Y
MRI	Y	Level I	
Dialysis Services (Nephrology)		Level II	
Community Outreach		Level III	
Emergency		Level IV	
Outpatient		Trauma Clinic	
Inpatient		Urgent Care	
Education and Support Services	Y		
Emergency Services	Y		
Level II Emergency		Weight Loss Services	
Level III Emergency		Surgical Weight Loss	
Level IV Emergency			
Level V Emergency			
EMS			
Enterostomal Therapy		Women's Care Services	
Eye Care		Family Birth Center	
Gastroenterology Services		Level I Nursery	
Heart & Vascular Center	Y	Level II Nursery	
Cardiothoracic Surgery	Y	Prenatal Services	
Cardiac Rehab Program	Y	Wound Care Services	
Cardiopulmonary Services	Y		
Heart Failure Clinic	Y		

History

Tacoma's first hospital was the Fannie C. Paddock Memorial Hospital. Founded in 1882, it was named for the wife of Bishop John Paddock, after they journeyed from Brooklyn, New York, to bring medical care to this booming Washington Territory logging town. The health care mission the Paddocks began in a converted dance hall has expanded over the years and more than a century later, has evolved into MultiCare.

As medical needs grew in Tacoma, the Fannie C. Paddock Memorial Hospital was relocated to a more modern facility in 1915 and was renamed Tacoma General Hospital.

Mary Bridge Children's Hospital & Health Center traces its roots to this era as well. In 1921, the newly formed Tacoma Orthopedic Association began a fundraising drive to provide children with needed medical care. This vision eventually grew into a community effort to build a local children's hospital.

By 1947, with key funding from the estate of Dr. Albert Bridge, a local physician, the Tacoma Orthopedic Association was able to build a local children's hospital. In 1955, Mary Bridge's Children's Hospital opened, named after Dr. Bridge's mother.

By the 1970s, the demand for more services grew. Tacoma General Hospital opened a regional cancer center and patient care pavilion in 1977.

In 1979, Tacoma General Hospital joined with Mary Bridge Children's Hospital and Doctor's Hospital to form a new, not-for-profit health care corporation. The corporation was called Consolidated Hospitals. It later became MultiCare Medical Center.

Associated Health Services and Hospice of Tacoma joined MultiCare in 1986, establishing home health services.

Allenmore Hospital was purchased by MultiCare from the Humana Corporation in 1989 and MultiCare evolved into a regional provider of medical services, becoming MultiCare Health System.

Population in the South Sound region grew rapidly in the 1990s. MultiCare met the need for community-based health care by opening the system's first clinic outside Tacoma--Gig Harbor Urgent Care in 1990.

Three years later, the Medical Park at Covington became the first comprehensive outpatient medical center, urgent care and physician office facility in Washington State. It also became the

first MultiCare service outside of Pierce County. It is now known as Covington MultiCare Clinic.

In 1994, Kent Medical Center joined MultiCare and work began to establish a network of community physicians. This became the MultiCare Medical Group. Shortly thereafter, the Doctor's Clinic of Auburn and Auburn Internal Medicine Associates joined MultiCare, giving the citizens of south King County a broad array of conveniently located outpatient and clinic-based services. Clinics also opened in Lakewood, University Place, Westgate and Northshore, making outpatient and clinical care available in Pierce County communities as well.

MultiCare Health System welcomed Good Samaritan Community Healthcare as an affiliate in 2006. Founded in Puyallup in 1952, Good Samaritan serves a growing population in east Pierce County. This affiliation established MultiCare Health System as the largest not-for-profit health care organization in Western Washington, with more than 7,800 employees and 93 sites of care.

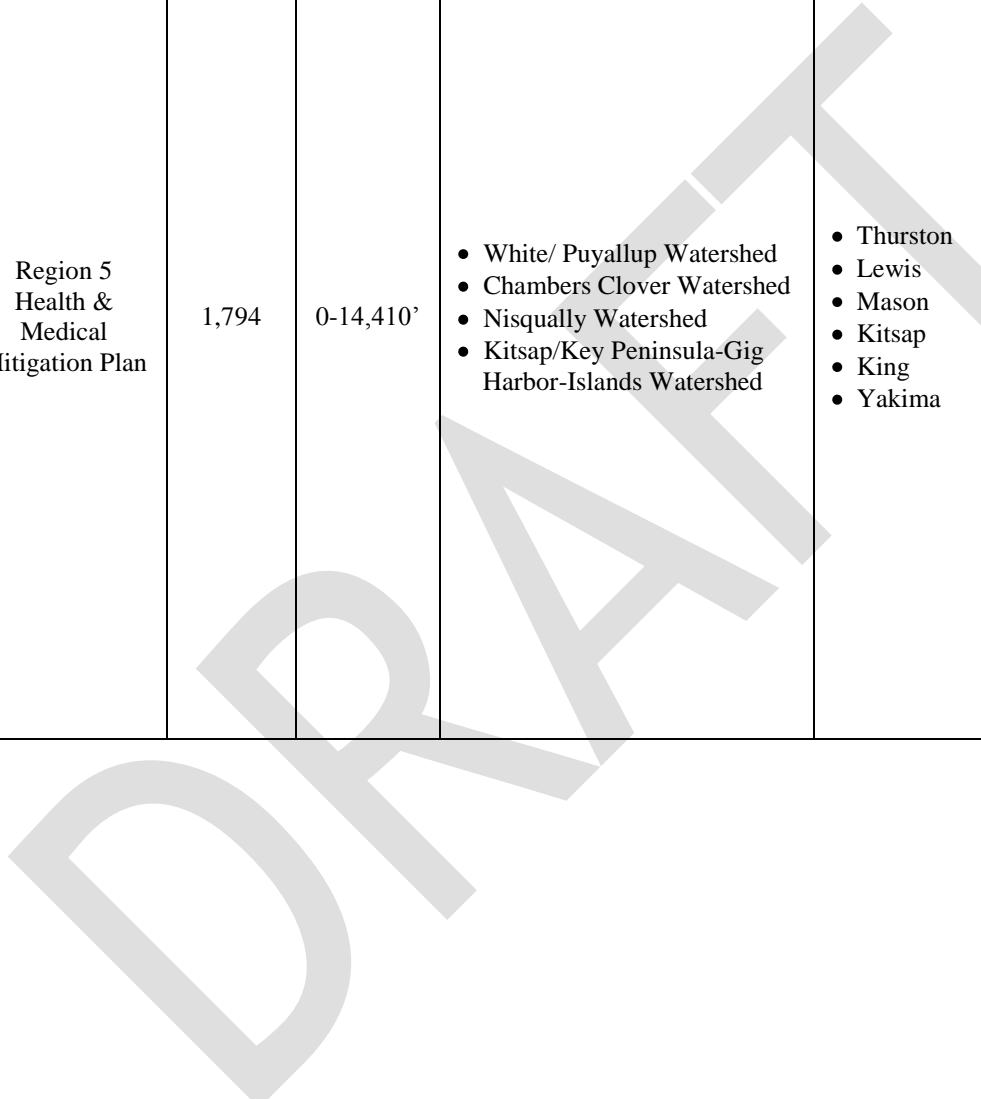
MultiCare Health System is now an integrated health care delivery network of four acute care hospitals, community physicians and clinics, working together to provide exceptional health care throughout the region.

DRAFT

Geo-Political Summary

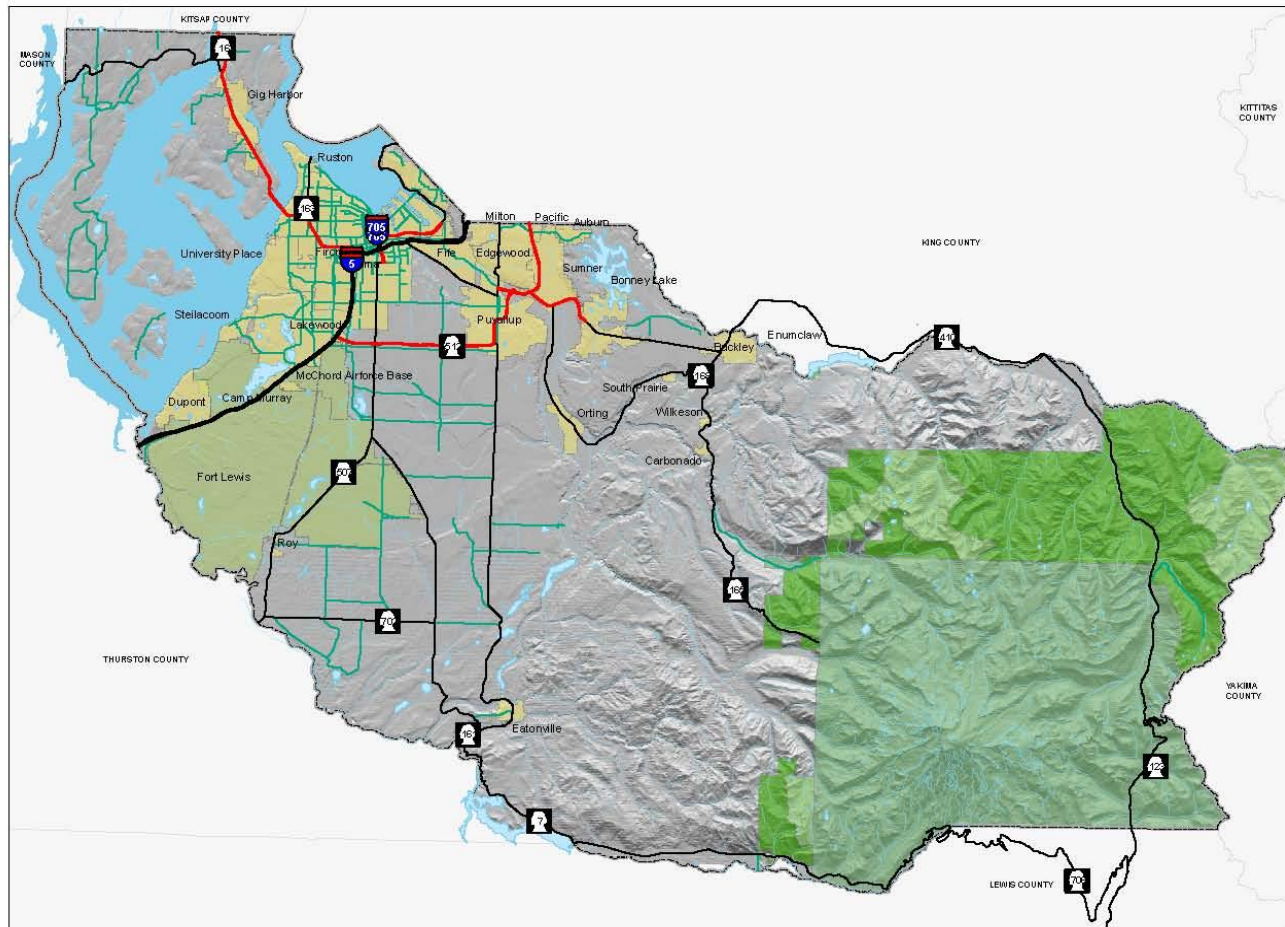
Table 2-2 Geo-Political Summary²

Organization	Area (sq mi)	Elevation Range (ft.)	Major Water Features	Regional Partners	
				Shared Borders	Land Use Authorities
Region 5 Health & Medical Mitigation Plan	1,794	0-14,410'	<ul style="list-style-type: none"> • White/ Puyallup Watershed • Chambers Clover Watershed • Nisqually Watershed • Kitsap/Key Peninsula-Gig Harbor-Islands Watershed 	<ul style="list-style-type: none"> • Thurston • Lewis • Mason • Kitsap • King • Yakima 	<ul style="list-style-type: none"> • Unincorporated Pierce County • Tacoma • Gig Harbor • Fircrest • Lakewood • Ruston • Milton • Edgewood • Bonney-Lake • Fife • Puyallup Tribe • Auburn • Pacific • Sumner • Orting • Carbonado • Buckley • Wilkeson • South Prairie • Eatonville • Roy • DuPont • Steilacoom • University Place



Map 2- 1 Pierce County - Basemap

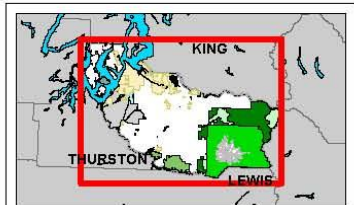
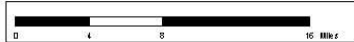
PIERCE COUNTY - BASEMAP



Legend

- CITIES
- MILITARY
- NATIONAL FOREST
- NATIONAL PARK
- WILDERNESS AREA
- WATER BODY
- RIVERS/STREAMS
- Limited Access
- Limited Access State Routes
- Other State Routes
- Arterials

The map features are approximate and are included only to provide a location of said feature. Additional features that have not been mapped may be present. This is not a warranty. The County assumes no liability or guarantee associated with actual use. ALL DATA IS EXPRESSLY PROVIDED AS IS AND WITH ALL FAULTS. THE COUNTY MAKES NO WARRANTY OF FITNESS FOR A PARTICULAR PURPOSE.



August 15, 2009



Population Summary

Demographics

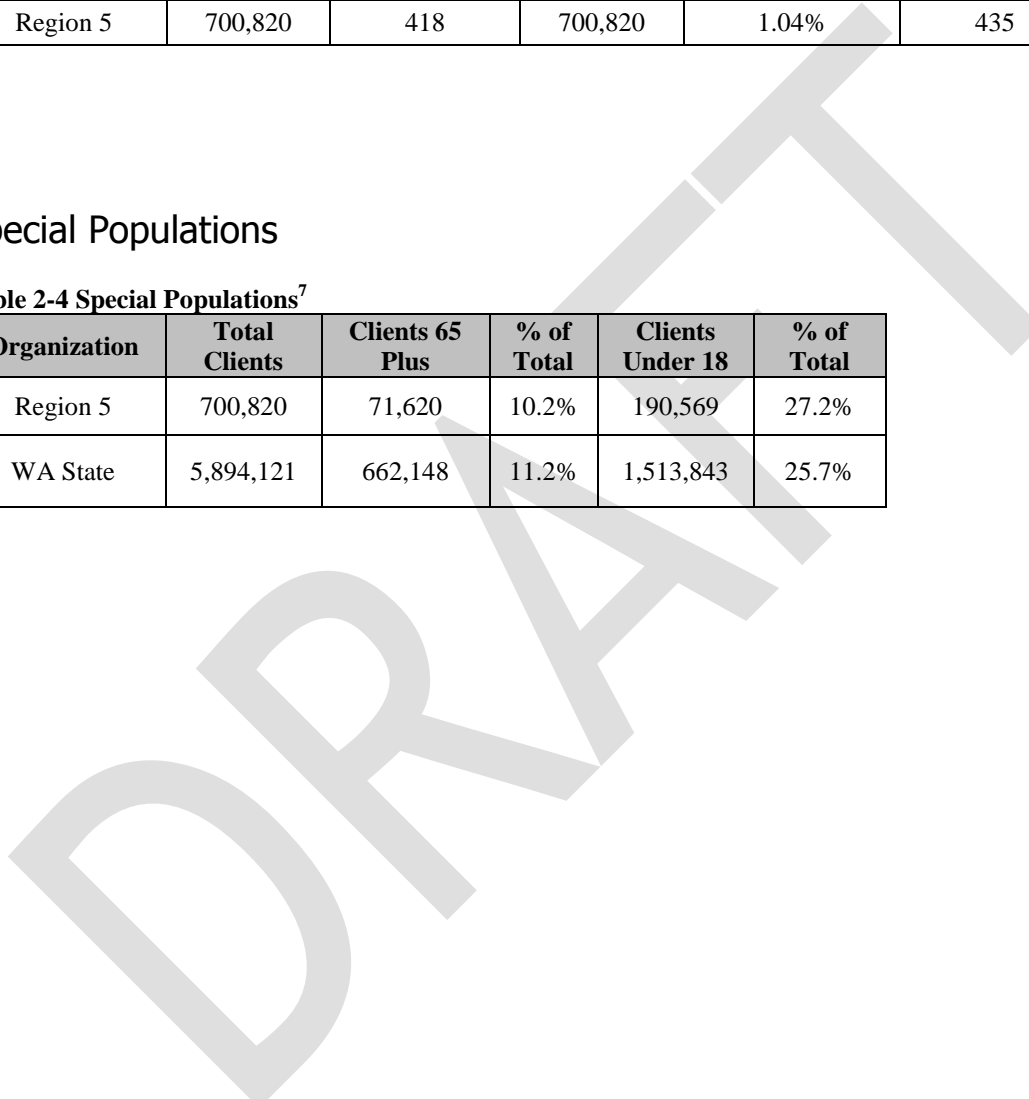
Table 2-3 County Population^{3,4,5,6}

Region 5	Population	Population Density (people/sq mi)	Population Served	Projected Year 2017 Population Change (%)	Projected Population Density	Projected 2017 Population Served
Region 5	700,820	418	700,820	1.04%	435	729,471

Special Populations

Table 2-4 Special Populations⁷

Organization	Total Clients	Clients 65 Plus	% of Total	Clients Under 18	% of Total
Region 5	700,820	71,620	10.2%	190,569	27.2%
WA State	5,894,121	662,148	11.2%	1,513,843	25.7%



Infrastructure Summary

General

Table 2-5 Parcel Summary⁸

Organization	# Parcels	Assessed Land Value Total (\$)	Avg. Land Value (\$/sq mile)	Improvement Value Total (\$)	Avg Improvement Value (\$/parcel)
MultiCare Health System	40	\$21,081,712	\$527,043	\$154,302,997	\$3,857,575
Region 5	292,666	\$39,054,414,761	\$133,444	\$47,992,756,413	\$163,984.73

Organization	Total Assessed Value	Average Assessed Value
MultiCare Health System	\$175,384,709	\$4,384,618
Region 5	\$87,047,171,174	\$297,428

Organization Infrastructure

The following table shows the overview of infrastructure owned by the MultiCare Health System. The infrastructure is categorized according to the infrastructure sectors as designated by the Department of Homeland Security. This table is intended as a summary only.

For further details on what is included in the Department of Homeland Security infrastructure sectors, please see the Process Section 1.

Table 2-6 Owned Infrastructure⁹

Total Infrastructure	Emerg. Services	Tele-comm	Trans- portation	Public Health	Govern- ment	Commer- cial	Total Value (\$)
43	0	0	0	43	0	0	\$175,384,709

Economic Summary

Table 2-7 Fiscal Summary¹⁰

Organization	Operating Costs (per month)	Operating Budgeted Revenues ¹¹	Operating Budgeted Expenditures ¹²	Fund Balance as % of Operating Cost	Avg Fund Balance (5 yrs)
MultiCare Health System	Not Available	Not Available	Not Available	Not Available	Not Available

Table 2-8 Pierce County Employment Profile¹³

Employment Category (SIC)	Pierce County
Agriculture, Forestry, Fishing, Mining and Hunting	3,126
Construction	24,340
FIRES (Finance, Insurance, Real Estate, and Services)	18,212
Wholesale Trade	13,919
Transportation and Warehousing and Utilities	21,555
Manufacturing	39,511
Retail	39,408
Education, Health and Social Services	65,256
Professional, Scientific, Management, Administrative, Waste Management	23,095
Public Administration	18,363

Table 2-9 Unemployment Rate¹⁴

Organization	Unemployment Rate
Region 5	8.9%
WA State	9.2%

Resource Directory

Regional

- **MultiCare Health System**
<http://www.multicare.org>
- **Tacoma Pierce County Health Department**
<http://www.tpchd.org>
- **Washington State Department of Health**
<http://www.doh.wa.gov>
- **Pierce County Government**
<http://www.piercecountywa.org/PC/>
- **Pierce County DEM**
<http://www.piercecountywa.org/mitigation>
- **Municipal Research & Services Center of Washington (MRSC)**
<http://www.mrsc.org>

National

- **Centers for Disease Control and Prevention**
<http://www.cdc.gov>
- **U.S. Department of Health and Human Services**
<http://www.hhs.gov/>
- **National Institute of Health**
<http://www.nih.gov/>

Endnotes

¹ Information from survey compiled by planning team.

² Information from Pierce County GIS application, CountyView Pro (7/06).

³ “Population” from Census 2000, Office of Financial Management.

⁴ “Projected Population Change (%)” from Pierce County Buildable Lands Report, Sept 2002.

⁵ “Projected Population Density” is based on an assumption of the jurisdiction maintaining the same geographic area and boundaries. It does not consider changes in annexation, district mergers, etc.

⁶ “Projected 2017 Population” from Pierce County Buildable Lands Report, Sept 2002.

⁷ Information from Pierce County GIS application, CountyView Pro projected for 2007.

⁸ Information from Pierce County GIS application, CountyView Pro projected for 2007.

⁹ Information obtained from Organization from Infrastructure Matrix.

¹⁰ Information obtained from Organization from current Budget.

¹¹ Non-Capital

¹² Non-Capital

¹³ Information from Census 2000, Office of Financial Management.

¹⁴ Information from Census 2000, Office of Financial Management.

DRAFT