

Implementing Sustainability County Executive (2010-2015)

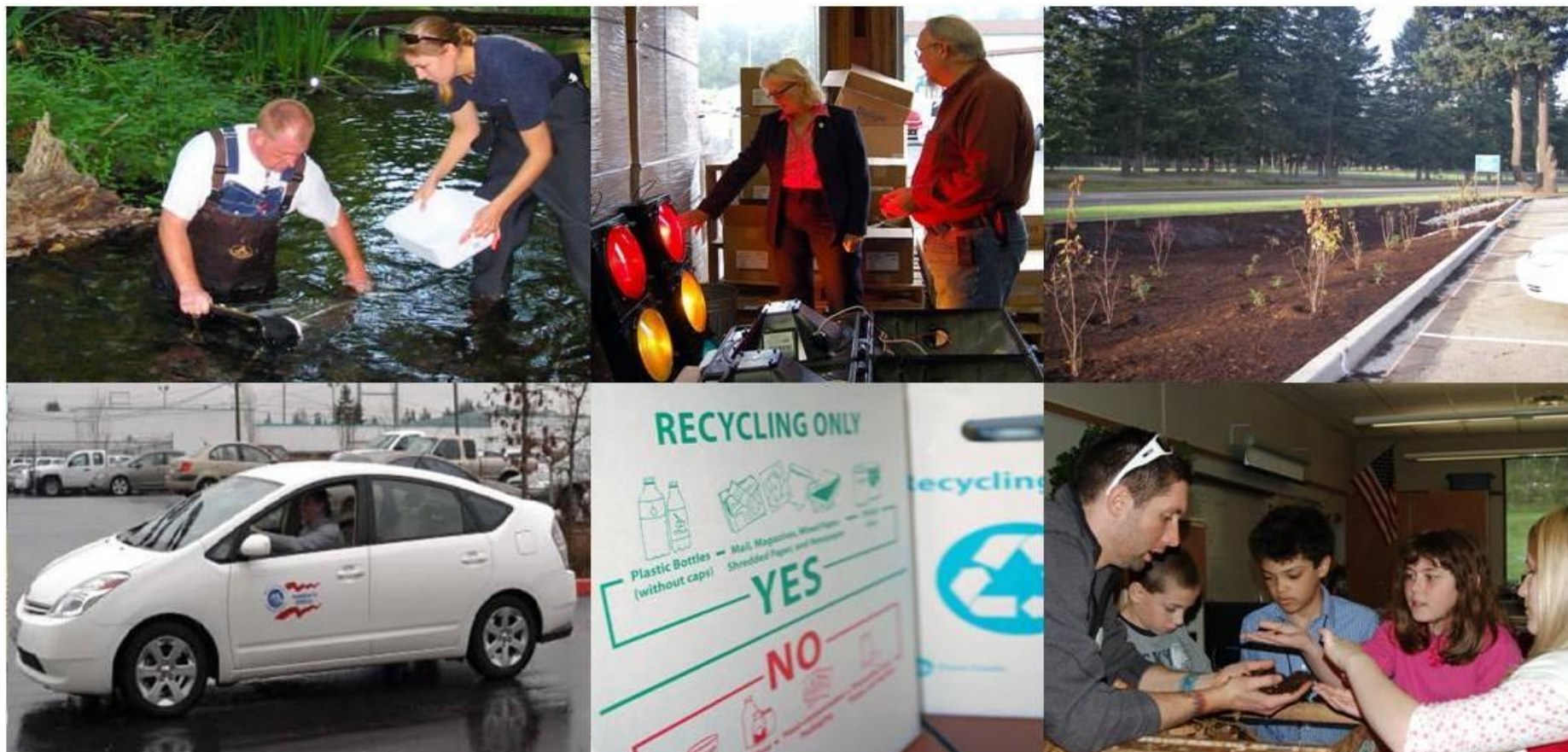
Leaner & Greener

April 2011

“The county has set big goals, and we can achieve them if each of us considers sustainability in everything that we do. We are not doing this because it feels good – we are doing this because it’s the right thing to do.”



Pat McCarthy, County Executive



This document is printed in Calibri font to maximize electronic reading. Please do not print this document, but if you must please print double-sided.

2015 Pierce County Sustainability Goals

Leaner & Greener

Updated Pierce County Government Sustainability Goals



Air Quality: All areas of Pierce County are in compliance with federal air quality standards.



Employee Sustainability Training: When surveyed, 90% of Pierce County employees take sustainability into consideration in their jobs



Energy Efficiency: Reduce by 15%* electricity and natural gas use in County facilities over January 2010 levels. All new County facilities are built to a LEED Silver or better standard.



Green Purchasing and Recycling: At least 50% of office products purchased have recycled content. Reduce purchase and consumption of copier/printer paper by 15%. Increase recycling by 35% **. Reduce the amount of landfill waste by 30%.



Transportation: 50% of Pierce County's general use fleet to be hybrid/electric/alternative fuel vehicles. 25% of Pierce County employee commute trips will be public transit, carpool/vanpool, bicycle, walk, drive electric vehicles, telecommute or compressed work week.



Water Quality and Quantity: Reduce water use in our 43 owned buildings by 10%. On average Pierce County streams grade to a B- or better (Currently C).***

Expanded Goal*, Decreased Goal**, New Goal***

County Executive – Leaner & Greener

Energy Efficiency

- Work with other departments in the CCB to reduce energy use by 15%
- Power settings on computers & monitors
- Re-evaluate printer inventory & printing practices
- On-line services (E-docs, Pat's bio & photo, boards & commission applications as examples)
- Make email the means of communication

Employee Sustainability Training

- Annually ask the Office of Sustainability to provide a report on “best practices”
- “Sustainability Cheerleader” to improve communications about sustainability.
- Create a blog so that “recycle champions” can share ideas & keep enthusiasm going.

Transportation

- Encourage staff to carpool or use public transportation in lieu of personal vehicles with goal of 25% commute trip reductions through ORCA card use.
- Replace fleet vehicle w/ hybrid vehicle.
- Encourage staff to use county fleet vehicles for business transportation, in lieu of personal vehicles.
- Reduce travel through conference calls and webex for meetings.
- Support employee alternative commuting choices through flexible work schedules.



Air Quality

- Request wood stove education through Office of Sustainability
- Support employee alternative commuting choices through flexible work schedules.

Green Purchasing and Recycling

- Continue to follow the county's Environment Purchasing Policy by ordering less frequently & more efficiently with a goal of 50% of product purchases be made of recycled content.
- Reuse paper as scratch paper (as appropriate)
- Recycle toner
- Buy only duplex capable printers.
- 25% reduction in paper use – use electronic versions where possible.

Water Quality

- Work with departments in CCB to reduce water use by 10%
- Wash our fleet vehicle in designated car washes.

Greenhouse Gas Reductions

- Encourage staff to always select hybrid vehicles for county business related transportation.
- Continually evaluate business practices to reduce carbon footprint.

2010 County Executive Sustainability Snapshot

Department Size

- Employees: **9 employees**

Employee Sustainability Education and Training

- % of employees have filled out the sustainability survey: **78%**
- % of employees who take sustainability into consideration in their jobs: **71% yes**
- General Sustainability Training: **Yes**
- Education on what creates greenhouse gases and strategies for reducing: **Yes**
- Wood stove educational training: **Yes**

Energy Efficiency

- Building EnergyStar Score: **County City Building 57**
- % reduction in energy use in office building: **CCB -4.7%**
- Building Energy Cost per Sq Ft: **CCB \$1.01**

Green Purchasing and Recycling

- % of office products that have recycled content: **21.76%; down from 29.8% in 2009**
- % Paper use: **36% increase in paper use, spent \$220.58 more than in 2009**

Transportation

- Vehicles Operated by Department: **1**
- Hybrid/Electric vehicles: **0**
- Mileage Reimbursements: **5,055 miles, 431 miles more than in 2009**
- Gasoline use: **591 gallons**
- Fleet MPG: **21.73**