

# Implementing Sustainability Parks and Recreation (2010-2015)

## Leaner & Greener

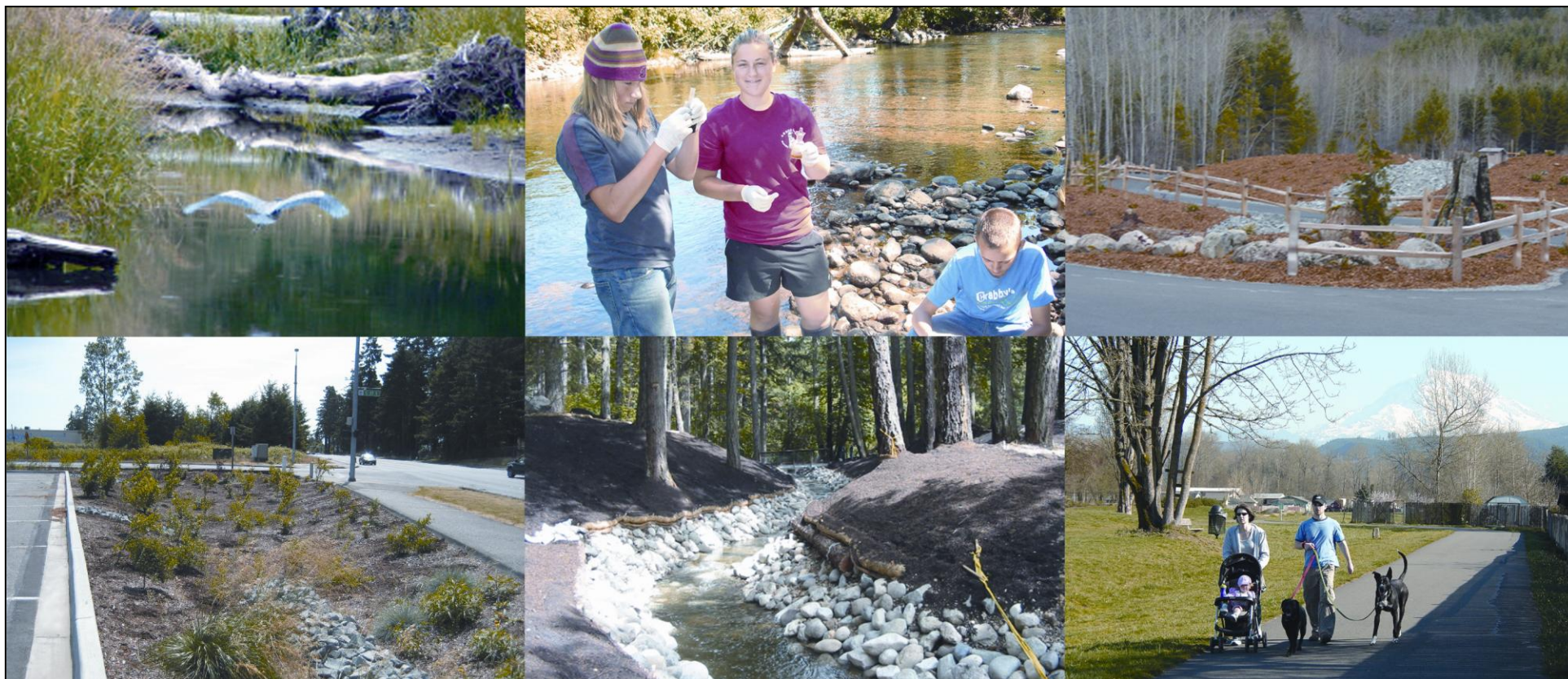
April 2011



Pierce County  
Office of Sustainability

“Parks and Recreation Departments are all about sustainability, sustaining our ecosystems and sustaining healthy communities.”

Kathryn Kravit-Smith, Parks and Recreation



This document is printed in Calibri font to maximize electronic reading. Please do not print this document, but if you must please print double-sided.

# 2015 Pierce County Sustainability Goals

## Leaner & Greener

### Updated Pierce County Government Sustainability Goals



**Air Quality:** All areas of Pierce County are in compliance with federal air quality standards.



**Employee Sustainability Training:** When surveyed, 90% of Pierce County employees take sustainability into consideration in their jobs



**Energy Efficiency:** Reduce by 15%\* electricity and natural gas use in County facilities over January 2010 levels. All new County facilities are built to a LEED Silver or better standard.



**Green Purchasing and Recycling:** At least 50% of office products purchased have recycled content. Reduce purchase and consumption of copier/printer paper by 15%. Increase recycling by 35% \*\*. Reduce the amount of landfill waste by 30%.



**Transportation:** 50% of Pierce County's general use fleet to be hybrid/electric/alternative fuel vehicles. 25% of Pierce County employee commute trips will be public transit, carpool/vanpool, bicycle, walk, drive electric vehicles, telecommute or compressed work week.



**Water Quality and Quantity:** Reduce water use in our 43 owned buildings by 10%. On average Pierce County streams grade to a B- or better (Currently C).\*\*\*

Expanded Goal\*, Decreased Goal\*\*, New Goal\*\*\*

# Parks and Recreation – Leaner & Greener

## Energy Efficiency

- Replace, renovate and/or optimize building mechanical and electrical systems or resource-inefficient infrastructure, including temperature settings and lighting.
- Include LEED Silver standards in our building planning, design and construction where appropriate.
- Ensure lights, computers, monitors, printers, copiers and other equipment are turned off or in sleep mode when not in use
- Powersave on computers, monitors, printers and copiers
- Power down computers when they won't be needed for at least four hours.
- Analyze feasibility and implement solar energy sources for exterior lighting, restrooms and parking lot lighting.
- Reduce by 15% electricity and natural gas in our buildings included in the Energy Star program.

## Employee Sustainability Training

- Develop incentives for staff and public participation in sustainable practices.
- Include sustainability sessions in our department 'retreats'.
- Seek and take advantage of sustainability training offered.



## Transportation

- Promote online registration to cut back on commuter trips.
- Participate in conference call / web based meetings.
- Replace equipment with more energy efficient equipment.
- Schedule public meetings to better accommodate commuting times.
- Look for more innovative ways to get staff to different work sites (carpooling , uses of transit systems, hybrid vehicles, etc).
- Encourage staff to carpool to meetings whenever possible.
- Encourage staff to drive less (carpool, public transit, ride bicycles, or walk to work).
- 50% of our Fleet vehicles to be hybrid/electric/alternative fuel vehicles.
- 25% of our Fleet vehicle use to be multi-occupant.

## Air Quality

- Promote the 'Regional Trail Plan'.
- Administer the open space acquisition program 'Conservation Futures'.
- Enforce the "No Idle" program with vehicles and other gas powered equipment.
- Add to and/or replace trees throughout our system especially in sites with aging and diseased stands.
- Plant native trees and plants throughout our system.
- Promote wood smoke education amongst staff.

# Parks and Recreation – Leaner & Greener

## Water Quality

- Include Low Impact Development in our facility planning, design and construction where appropriate.
- Continue to partner with Public Works and Utilities – Surface Water Management to improve old storm water systems to current guidelines where possible.
- Renovate existing irrigation systems to more efficient water usage technology.
- Use more native vegetation throughout our system

## Green Purchasing and Recycling

- Expand our current recycling program throughout our system.
- Encourage all users of our parks and programs to participate in recycling.
- Continue using 'The Builders Exchange' electronic plan center for electronic bidding of construction projects.
- Partner with our Pierce County Public Works and Utilities Solid Waste division to encourage the public to recycle at the first use level instead of staff having to sort at second level of the waste stream.
- Reuse office supplies - binder clips, paperclips, rubber bands, file folders, etc.
- Order recycled office supplies when available.
- Recycle toner cartridges.
- 50% of office products will have recycled content.
- Reduce paper consumption by 15%.

## Parks and Recreation Goals

- Increase program offerings that encourage health, fitness and nutrition.
- Continue the pilot recycling program at Spanaway Park.
- Email receipts to all customers that provide email addresses.
- E-mail scanned documents rather than mail hard copies when possible.



# 2010 Parks and Recreation Sustainability Snapshot

## Department Size

- Employees: **57.3 employees**

## Employee Sustainability Education and Training

- % of employees have filled out the sustainability survey: **80%**
- % of employees who take sustainability into consideration in their jobs: **89% yes**
- General Sustainability Training: **Yes**
- Education on what creates greenhouse gases and strategies for reducing: **Yes**
- Wood stove educational training: **Yes**

## Energy Efficiency

- Building EnergyStar Score: **Buildings Not Eligible**
- % reduction in energy use in office building: **Frontier Park Equestrian Barns (-5.9%), Frontier Park Lodge (+6%) Lakewood Community Center (-9.2%), Meridian Habitat Park (-29.1%), Sprinker (-2.3%)**
- Building Energy Cost per Sq Ft: **Frontier Park Equestrian Barns (\$0.45), Frontier Park Lodge (\$1.23) Lakewood Community Center (\$1.12), Meridian Habitat Park (\$0.43), Sprinker Recreation Center (\$2.42)**

## Green Purchasing and Recycling

- % of office products that have recycled content: **20.3%; down from 20.7% in 2009**
- % Paper use: **17.5% decrease in paper use, spent \$499 less than in 2009**

## Transportation

- Vehicles Operated by Department: **73**
- Hybrid/Electric vehicles: **1**
- Mileage Reimbursements: **1,047 miles, 224 miles less than in 2009**
- Gasoline use: **25,290 gallons, 329 gallons less than in 2009**
- General use fleet MPG: **18.87 mpg**