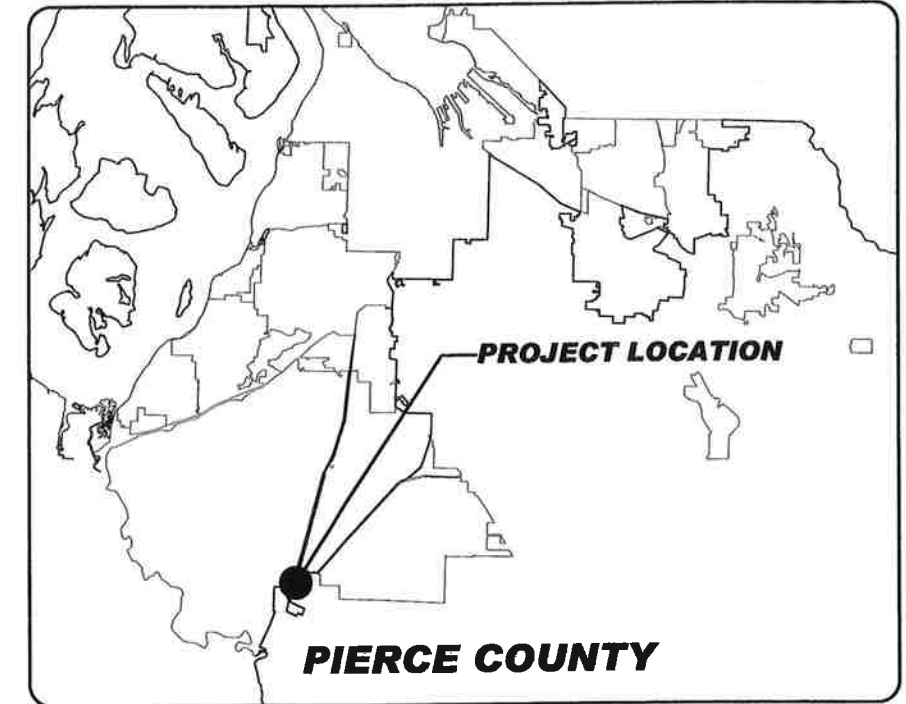
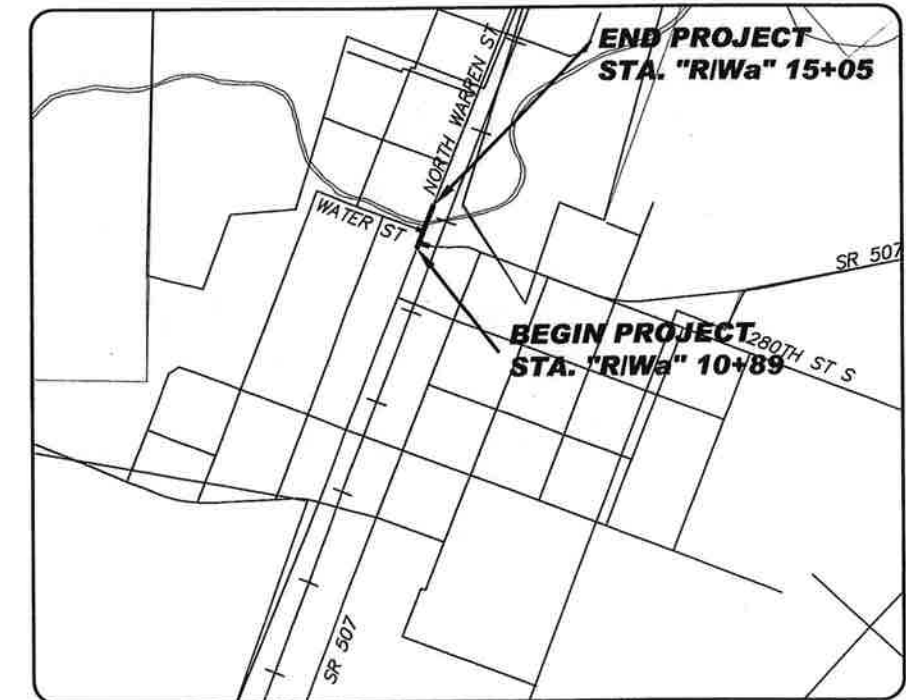


CALL 2 WORKING DAYS BEFORE YOU DIG  
**1-800-424-5555**  
 UTILITIES UNDERGROUND LOCATION CENTER

**BRIDGE NO. ROY34182-C**  
**CITY OF ROY**  
**NORTH WARREN STREET | MUCK CREEK**  
**CSM 6152**  
**FED. AID BROS-2027(052)**  
**RIGHT OF WAY PLANS**



**LOCATION MAP**






**VICINITY MAP**  
(NOT TO SCALE)

Drawing: P: 6152 - P01 - BRIDGE 110 ROY34182-C.DWG; 6152 CVDWG Layout Tab: RW COVER  
 Date: 03/24/2009 Time: 07:21:46 AM Plotted by: GSERVIS

<b>DRAWN BY:</b> G. SERVSS	<b>BOOK NO.:</b> Loose Leaf
<b>DESIGNED BY:</b> G. AMUNDSEN	<b>SURVEYED BY:</b> M. Holden
<b>CHECKED BY:</b> G. AMUNDSEN	<b>DATE SURVEYED:</b> December 2008
<b>REVIEWED BY:</b> K. SHANER, P.E.	<b>DATE PLOTTED:</b> Mar. 2009

NO.	DATE	REVISION	BY	APPROVED


**Pierce County**  
 Public Works and Utilities  
 Office of the County Engineer  
 Tacoma Mall Office Building  
 4301 South Pine Street, Suite 446  
 Tacoma, Washington 98409-7207  
 An APWA Accredited Agency

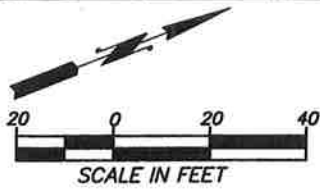

  
 County Engineer  
 APPROVED BY:  
  
 BRIAN D. STACY, P.E. DATE 4-10-09  
 JERRY P. BRYANT, P.E.  
 FIELD ENGINEERING MANAGER

**BRIDGE NO. ROY34182-C**  
**NORTH WARREN STREET | MUCK CREEK**  
**RIGHT OF WAY - COVER SHEET**  
**CSM 6152**

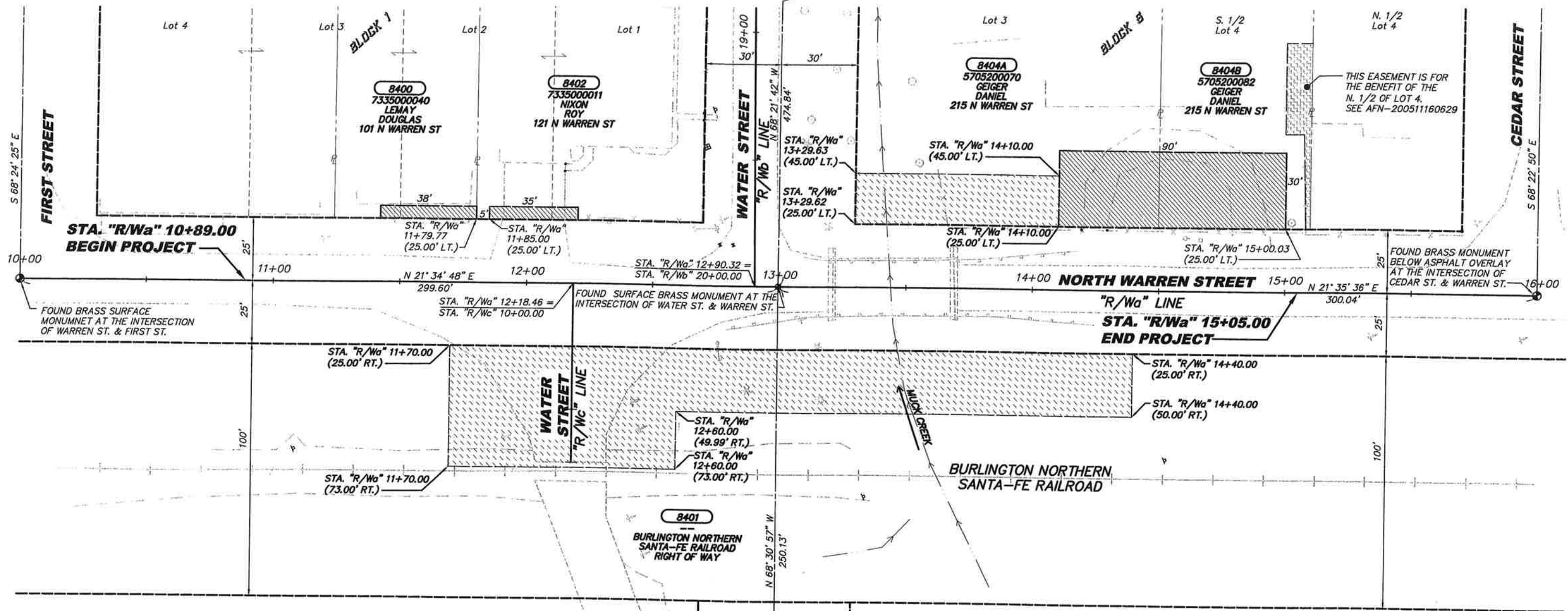
SEC. 34, T. 18 N., R. 2 E., W. M.

REGION NO.	STATE	FEDERAL AID PROJECT NO.	SHEET NO.	TOTAL SHEETS
10	WASH.	BROS-2027(052)	2	2

CALL 2 WORKING DAYS BEFORE YOU DIG  
**1-800-424-5555**  
 UTILITIES UNDERGROUND LOCATION CENTER



FOUND SURFACE BRASS MONUMENT, SOUTH ENTRANCE TO THE PARK OFF WATER STREET AT THE NORTH EDGE OF OIL MAT, 1.5 FEET FROM EDGE OF ASPALT



HORIZONTAL DATUM: NAD 83 (HARN) as Derived from NAD 83 (CORS96 epoch 02.0)  
 VERTICAL DATUM: NAVD 88, as Derived from NAD 83 (CORS96 epoch 02.0)

**PROPOSED LEGEND**

- DRIVEWAY RECONSTRUCTION PERMIT
- TEMPORARY EASEMENT

**EXISTING LEGEND**

- RIGHT OF WAY
- PROPERTY LINE
- LOT LINE
- RIGHT OF WAY CENTERLINE
- GUARDRAIL
- RAILROAD
- EDGE OF ASPHALT
- EDGE OF GRAVEL
- EDGE OF CONCRETE
- FENCE
- BUILDING
- EASEMENT
- LOT TIE
- CONIFER TREE
- DECIDUOUS TREE
- COMMERCIAL SIGN
- TRAFFIC SIGN
- TELEPHONE RISER
- WATER VALVE
- WATER METER
- UTILITY POLE
- GUY POLE
- UTILITY POLE ANCHOR
- FENCE POST
- SURFACE MONUMENT

**OWNERSHIP**

PARCEL NO.	NAME	TOTAL AREA	TEMPORARY ESMT	REMAINDER
8400	LEMAY, DOUGLAS	6,708 SF		6,708 SF
8401	BNSF RR	N/A	8,820 SF	N/A
8402	NIXON, ROY	10,780 SF		10,780 SF
8404A	GEIGER, DANIEL	14,408 SF	1,608 SF	14,408 SF
8404B	GEIGER, DANIEL	7,207 SF		7,207 SF

<b>DRAWN BY:</b> G. SERVISS	<b>BOOK NO.:</b> Loops Leaf
<b>DESIGNED BY:</b> G. AMUNDSEN	<b>SURVEYED BY:</b> M. Holden
<b>CHECKED BY:</b> G. AMUNDSEN	<b>DATE SURVEYED:</b> December 2008
<b>REVIEWED BY:</b> K. SHANER, P.E.	<b>DATE PLOTTED:</b> Mar. 2009

NO.	DATE	REVISION	BY	APPROVED

**Pierce County**  
 Public Works and Utilities  
 Office of the County Engineer  
 Tacoma Mall Office Building  
 4301 South Pine Street, Suite 446  
 Tacoma, Washington 98409-7207  
 An APWA Accredited Agency

County Engineer  
 APPROVED BY:  
  
 BRIAN D. STACY, P.E. DATE: 4-10-09  
 JERRY P. BRYANT, P.E.  
 FIELD ENGINEERING MANAGER

**BRIDGE NO. ROY34182-C**  
**NORTH WARREN STREET | MUCK CREEK**  
**RIGHT OF WAY - PLAN SHEET**  
**CSM 6152**

Drawing: P. 6152 - R01 BRIDGE NO. ROY34182-C\DWG\RW PLAN.DWG Layout Tab: LAYOUT1  
 xrefs:  
 Date: 03/23/2009 Time: 07:22:25 AM Plotted by: GSERVIS