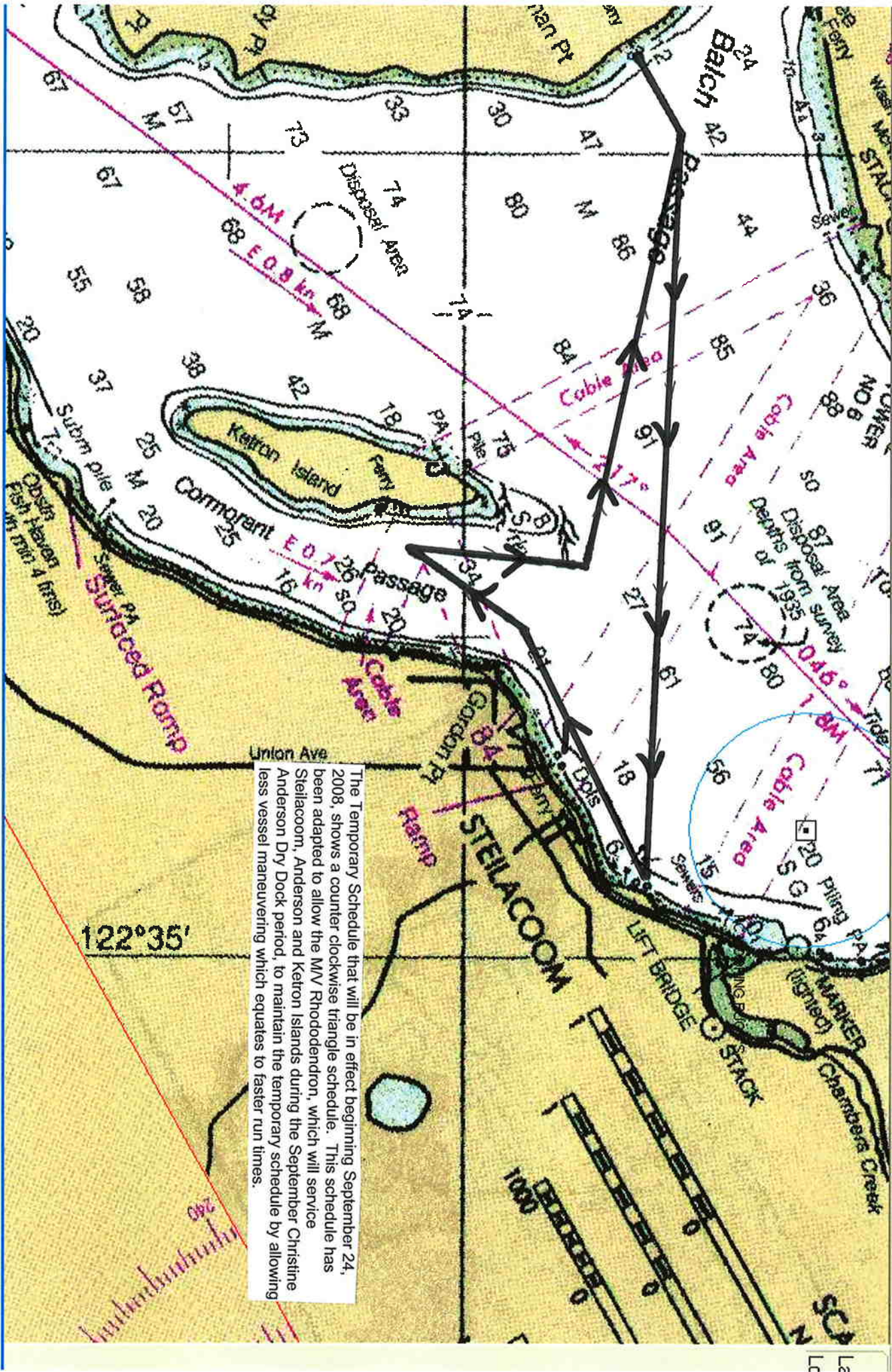


22-Sep-2008 09:15



The Temporary Schedule that will be in effect beginning September 24, 2008, shows a counter clockwise triangle schedule. This schedule has been adapted to allow the M/V Rhododendron, which will service Stellacoom, Anderson and Ketron Islands during the September Christine Anderson Dry Dock period, to maintain the temporary schedule by allowing less vessel maneuvering which equates to faster run times.