

(NOT TO SCALE)



Pierce County
 Public Works and Utilities
 Office of the County Engineer
 Tacoma Mall Office Building
 4301 South Pine Street, Suite 446
 Tacoma, WA 98409-7207

DATE	REVISION	APPROVED	DRAWN

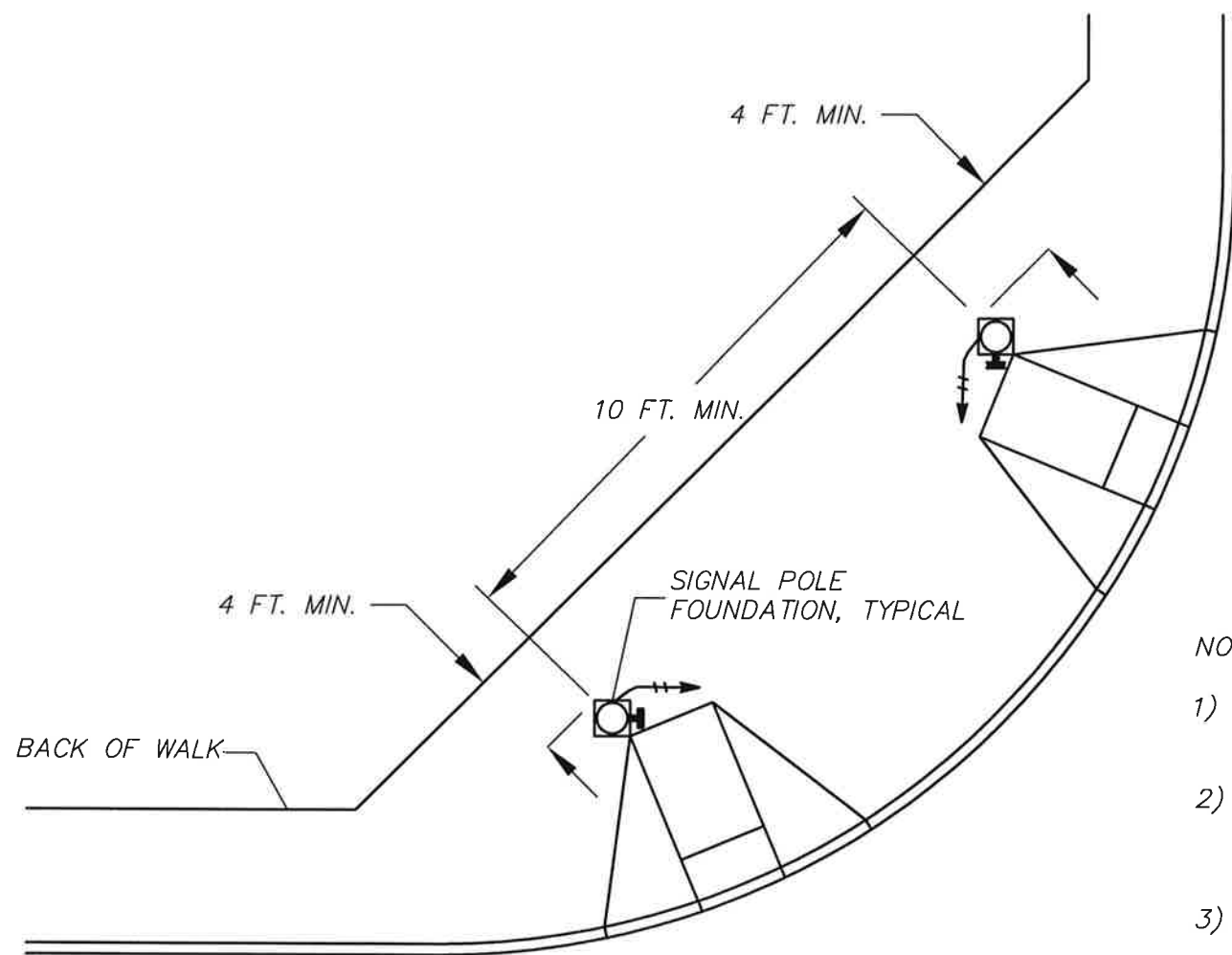


BRIAN D. STACY, P.E.
COUNTY ENGINEER

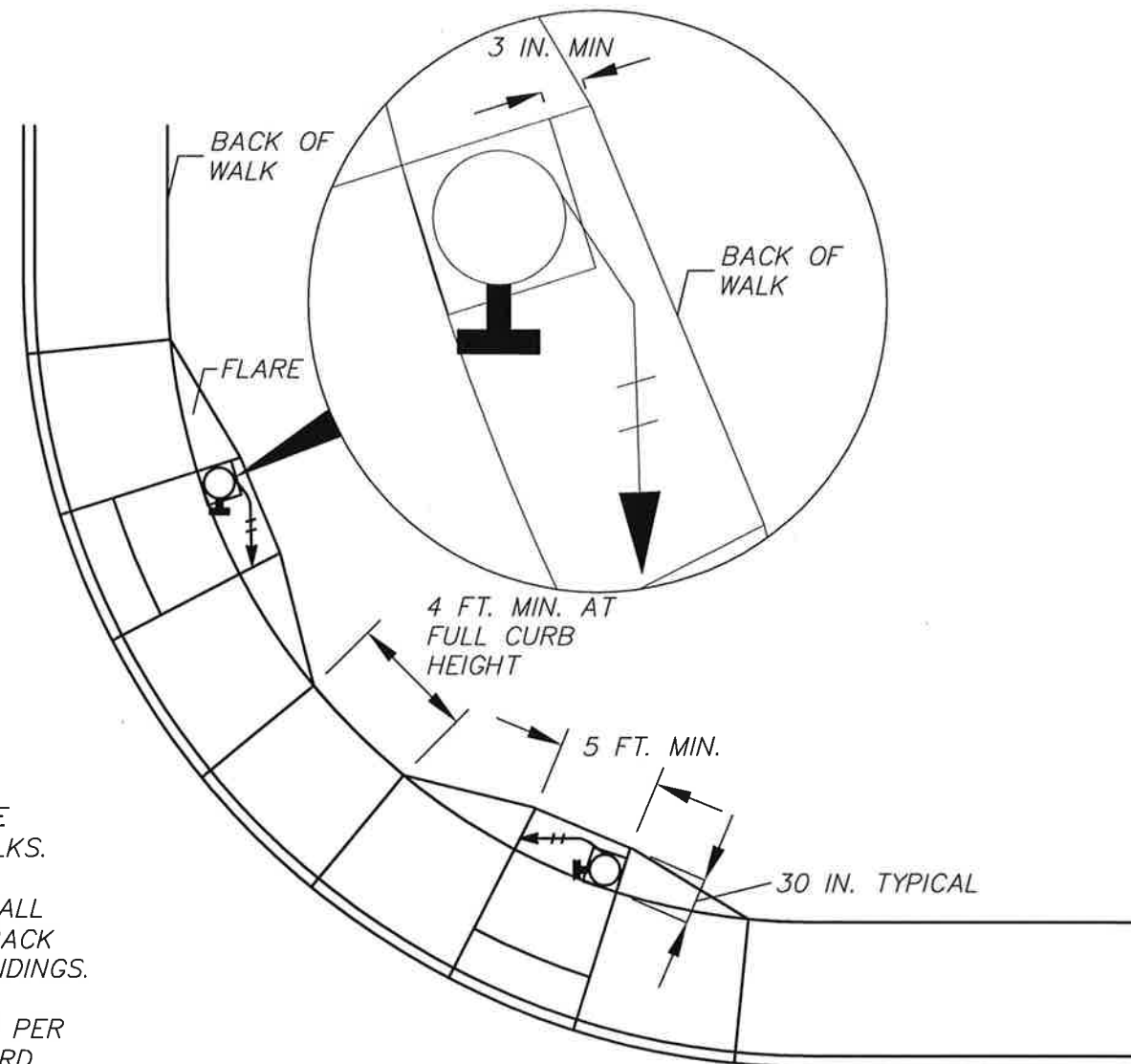
Office of the County Engineer

**STEEL POLE
 LUMINAIRE ARM
 CONNECTION**

PC.J1.1



**TYPE 1 CURB RAMPS
FOR SIGNAL LOCATIONS**



**TYPE 2 CURB RAMPS
FOR SIGNAL LOCATIONS**

NOTES:

- 1) RAMPS TYPICALLY TO BE ALIGNED WITH CROSSWALKS.
- 2) NO JUNCTION BOXES SHALL BE INSTALLED AT THE BACK OF THE CURB RAMP LANDINGS.
- 3) RAMPS TO BE DESIGNED PER PIERCE COUNTY STANDARD PC.F8.4.
- 4) FLARE TAPER FOR TYPE 2 CURB RAMPS TO MATCH RAMP CATCH POINT.
- 5) FLARE SLOPE FOR TYPE 2 CURB RAMPS TO MATCH RAMP SLOPE AND ELEVATION.

(NOT TO SCALE)



Pierce County

Public Works and Utilities
Office of the County Engineer
Tacoma Mall Office Building
4301 South Pine Street, Suite 446
Tacoma, Washington 98409-7207
An APWA Accredited Agency

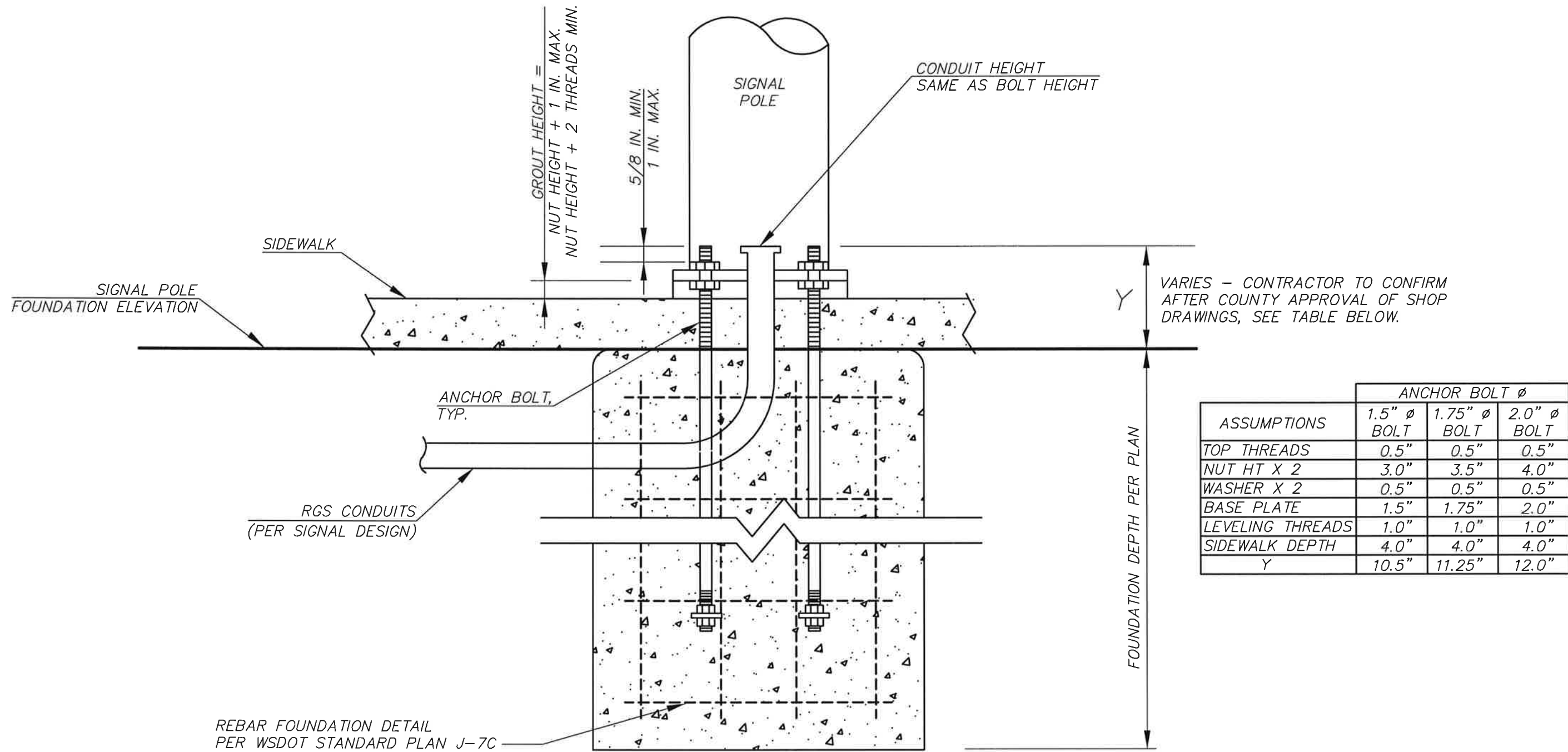


BRIAN D. STACY, P.E.
COUNTY ENGINEER

Office of the County Engineer

**SIGNAL POLE
FOUNDATION
AT BACK OF
SIDEWALK**

PC.J1.2



ASSUMPTIONS	ANCHOR BOLT ϕ		
	1.5" ϕ BOLT	1.75" ϕ BOLT	2.0" ϕ BOLT
TOP THREADS	0.5"	0.5"	0.5"
NUT HT X 2	3.0"	3.5"	4.0"
WASHER X 2	0.5"	0.5"	0.5"
BASE PLATE	1.5"	1.75"	2.0"
LEVELING THREADS	1.0"	1.0"	1.0"
SIDEWALK DEPTH	4.0"	4.0"	4.0"
Y	10.5"	11.25"	12.0"

REBAR FOUNDATION DETAIL
PER WSDOT STANDARD PLAN J-7C

(NOT TO SCALE)



Pierce County

Public Works and Utilities
Office of the County Engineer
Tacoma Mall Office Building
4301 South Pine Street, Suite 446
Tacoma, Washington 98409-7207
An APWA Accredited Agency

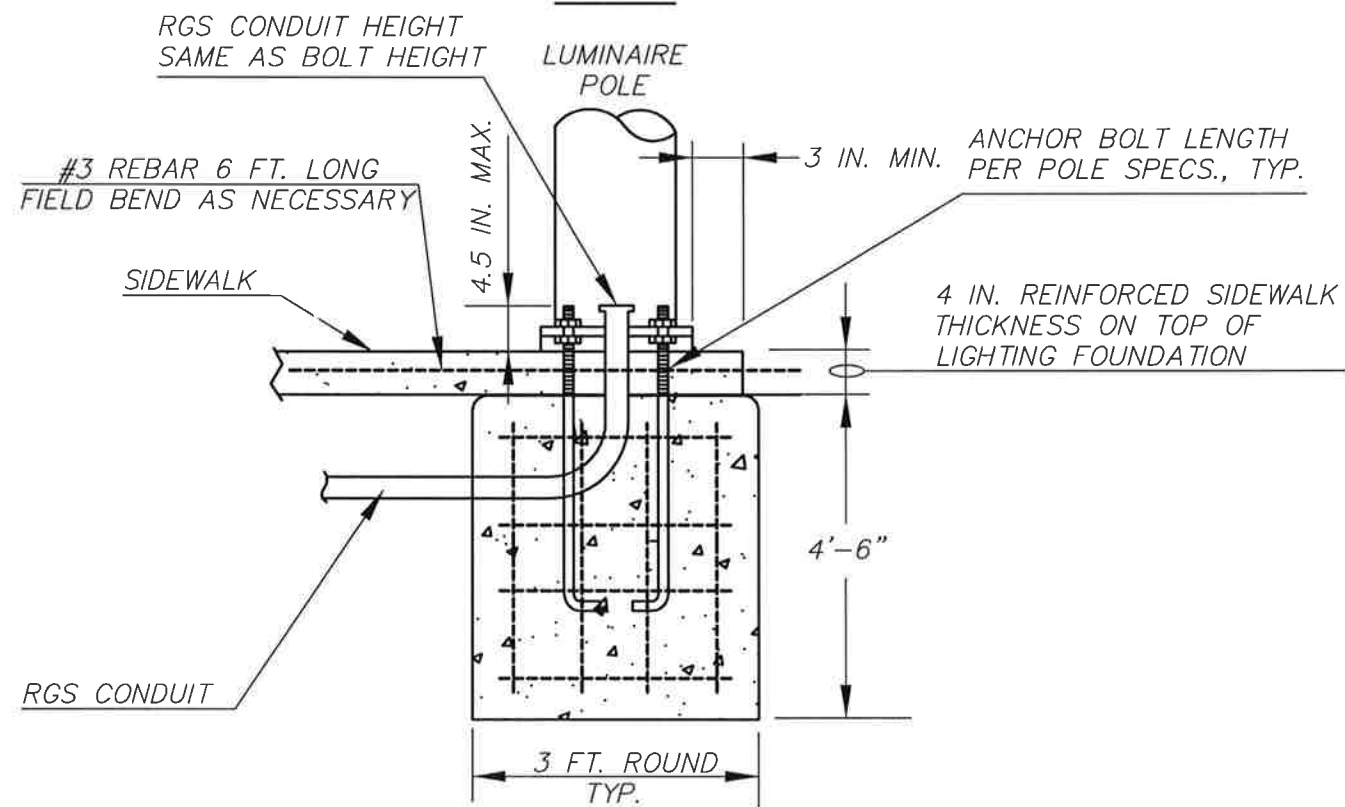
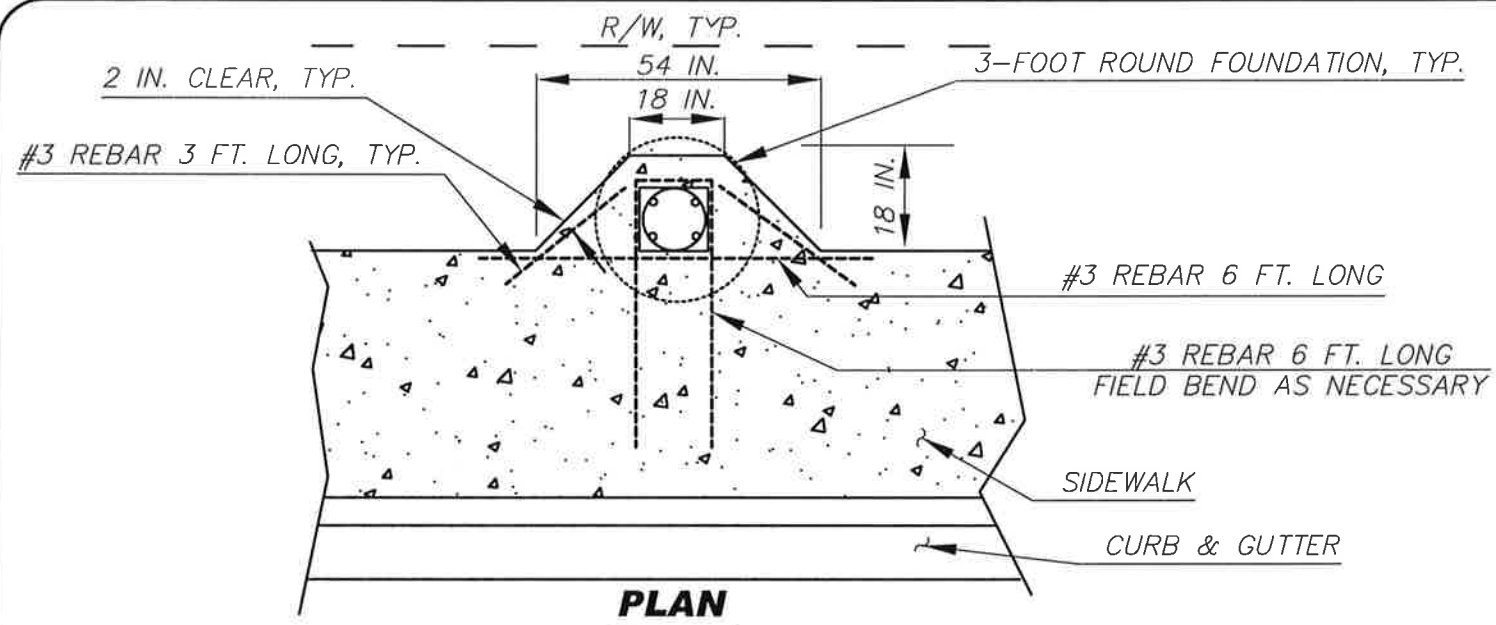


BRIAN D. STACY, P.E.
COUNTY ENGINEER

Office of the County Engineer

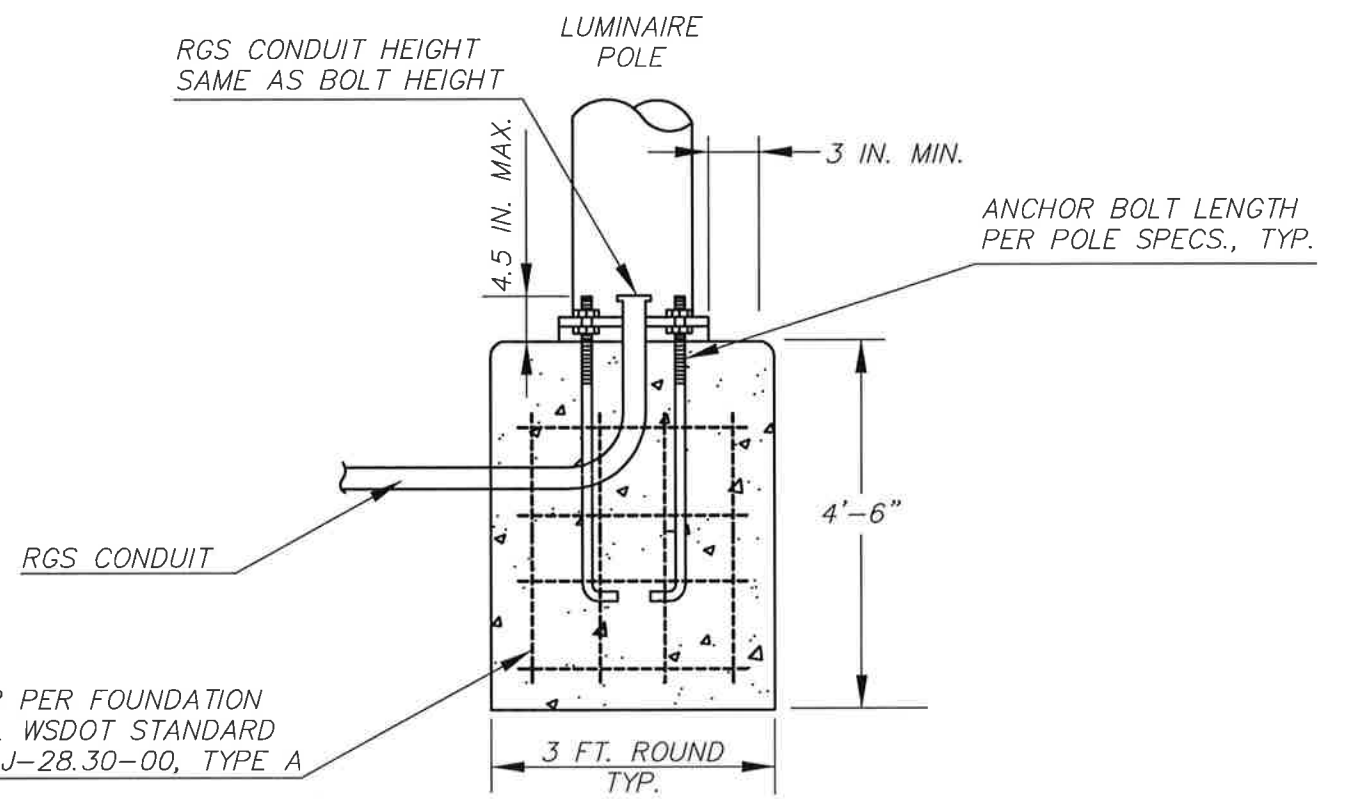
SIGNAL POLE FOUNDATION WITHIN SIDEWALK

PC.J1.3



LUMINAIRE POLE AT BACK OF SIDEWALK

ELEVATION



LUMINAIRE POLE WITHOUT SIDEWALK

(NOT TO SCALE)



Pierce County

Public Works and Utilities
 Office of the County Engineer
 Tacoma Mall Office Building
 4301 South Pine Street, Suite 446
 Tacoma, Washington 98409-7207
 An APWA Accredited Agency



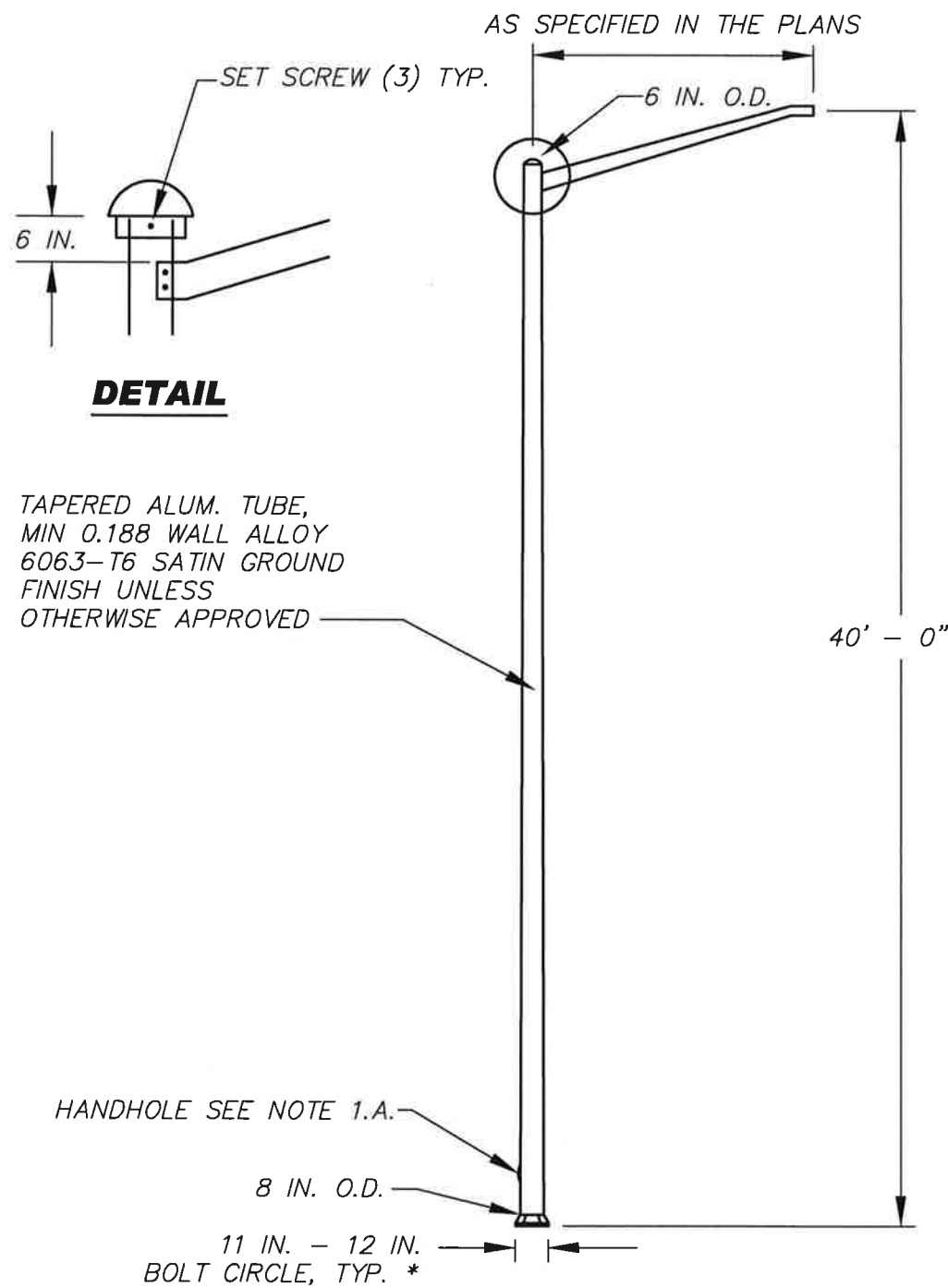
BRIAN D. STACY, P.E.
 COUNTY ENGINEER

Office of the County Engineer

1-21-10

**LUMINAIRE POLE
 FOUNDATION**

PC.J1.4



STREET LIGHTING SPECIFICATIONS

1. 40 - FOOT ALUMINUM ILLUMINATION STANDARD

A. DIMENSIONS

ILLUMINATION STANDARDS SHALL PROVIDE A FIXTURE MOUNTING HEIGHT OF 40'-0" PLUS OR MINUS 6 IN. WITH A MAST ARM AS SPECIFIED IN THE PLAN.

HANDHOLE (WITH GROUND LUG AND REMOVABLE COVER) CENTER SHALL BE LOCATED APPROXIMATELY 18 INCHES FROM THE BASE PLATE, ROTATED 90 DEGREES CLOCKWISE FROM THE PLANE OF THE BRACKET ARM (AS VIEWED FROM THE TOP).

B. STRENGTH

POLES SHALL MEET ALL STRENGTH REQUIREMENTS OF AASHTO FOR 90 MPH ISO TACH WHEN USED WITH A LUMINAIRE WEIGHING 48 POUNDS WITH E.P.A. OF 1.1 SQUARE FEET.

C. FINISH

THE POLES AND LUMINAIRE ARMS SHALL BE MADE OF SPUN ALUMINUM, SATIN GROUND FINISH.

D. ALL ATTACHING BOLTS AND SCREWS THAT ARE NOT GALVANIZED SHALL BE STAINLESS STEEL.

E. POLE (TOP) CAP SHALL BE FITTED ABOVE MAST ARM ATTACHMENT AND SHALL EXTEND OVER THE OUTSIDE DIAMETER OF THE POLE WITH A WATER RESISTANT FIT.

* CONTRACTOR SHALL BE RESPONSIBLE FOR VERIFICATION OF BOLT PATTERN PRIOR TO FOUNDATION CONSTRUCTION.

(NOT TO SCALE)



Pierce County

Public Works and Utilities
Office of the County Engineer
Tacoma Mall Office Building
4301 South Pine Street, Suite 446
Tacoma, Washington 98409-7207
An APWA Accredited Agency

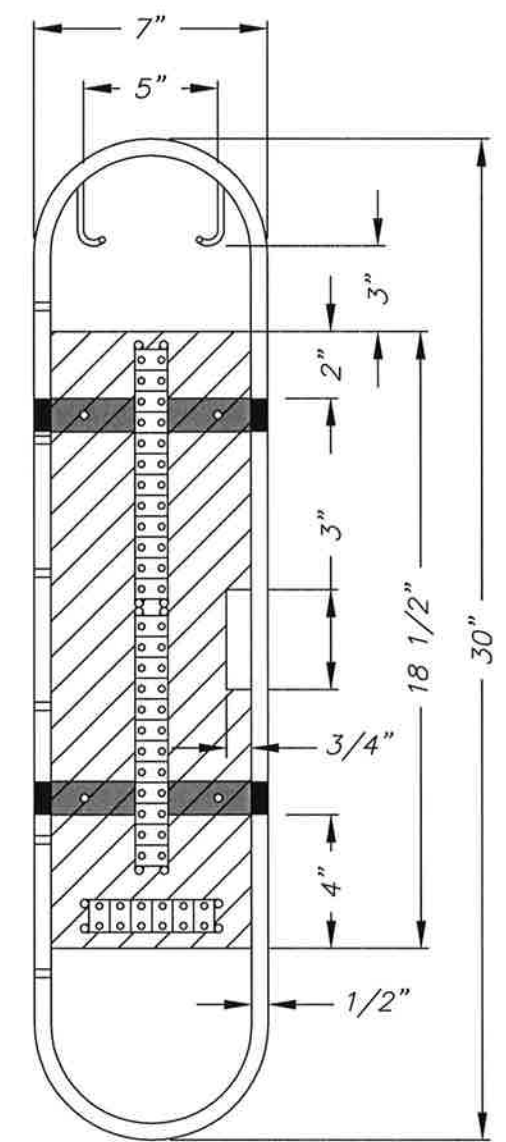
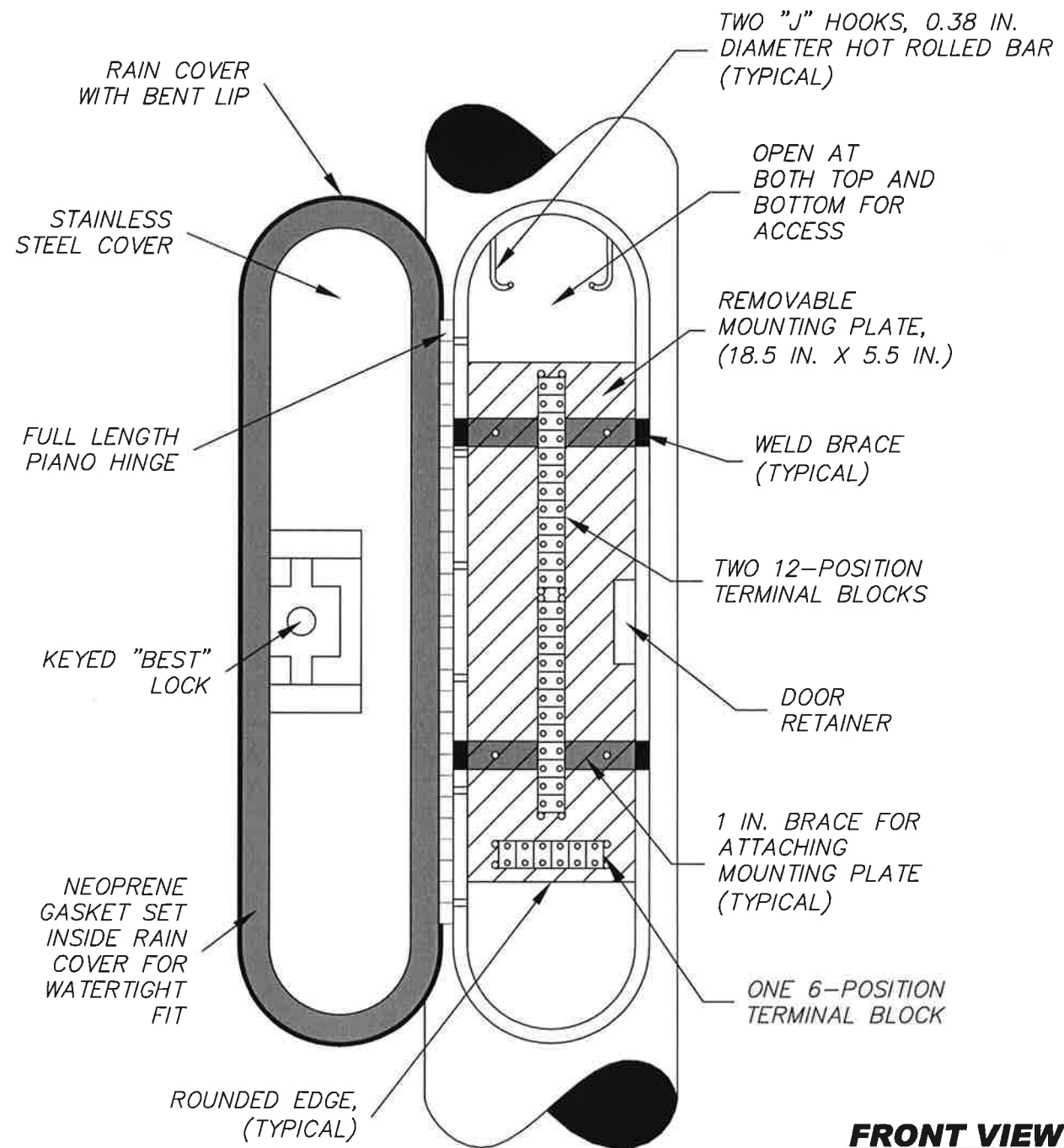


BRIAN D. STACY, P.E.
COUNTY ENGINEER

Office of the County Engineer

**ILLUMINATION
STANDARD**

PC-J1.5



FRONT VIEW

(NOT TO SCALE)



Pierce County

Public Works and Utilities
 Office of the County Engineer
 Tacoma Mall Office Building
 4301 South Pine Street, Suite 446
 Tacoma, Washington 98409-7207
 An APWA Accredited Agency



BRIAN D. STACY, P.E.
COUNTY ENGINEER

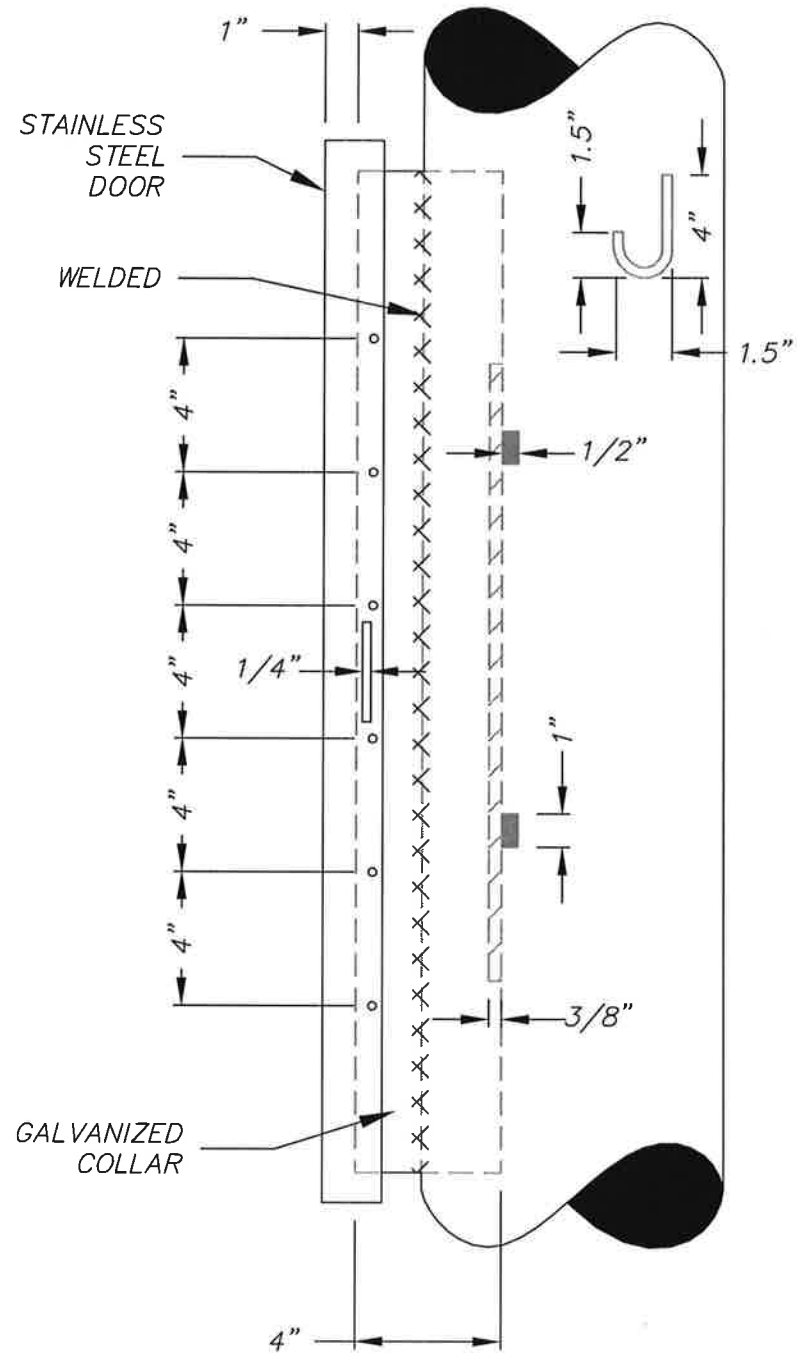
Office of the County Engineer

4-15-10

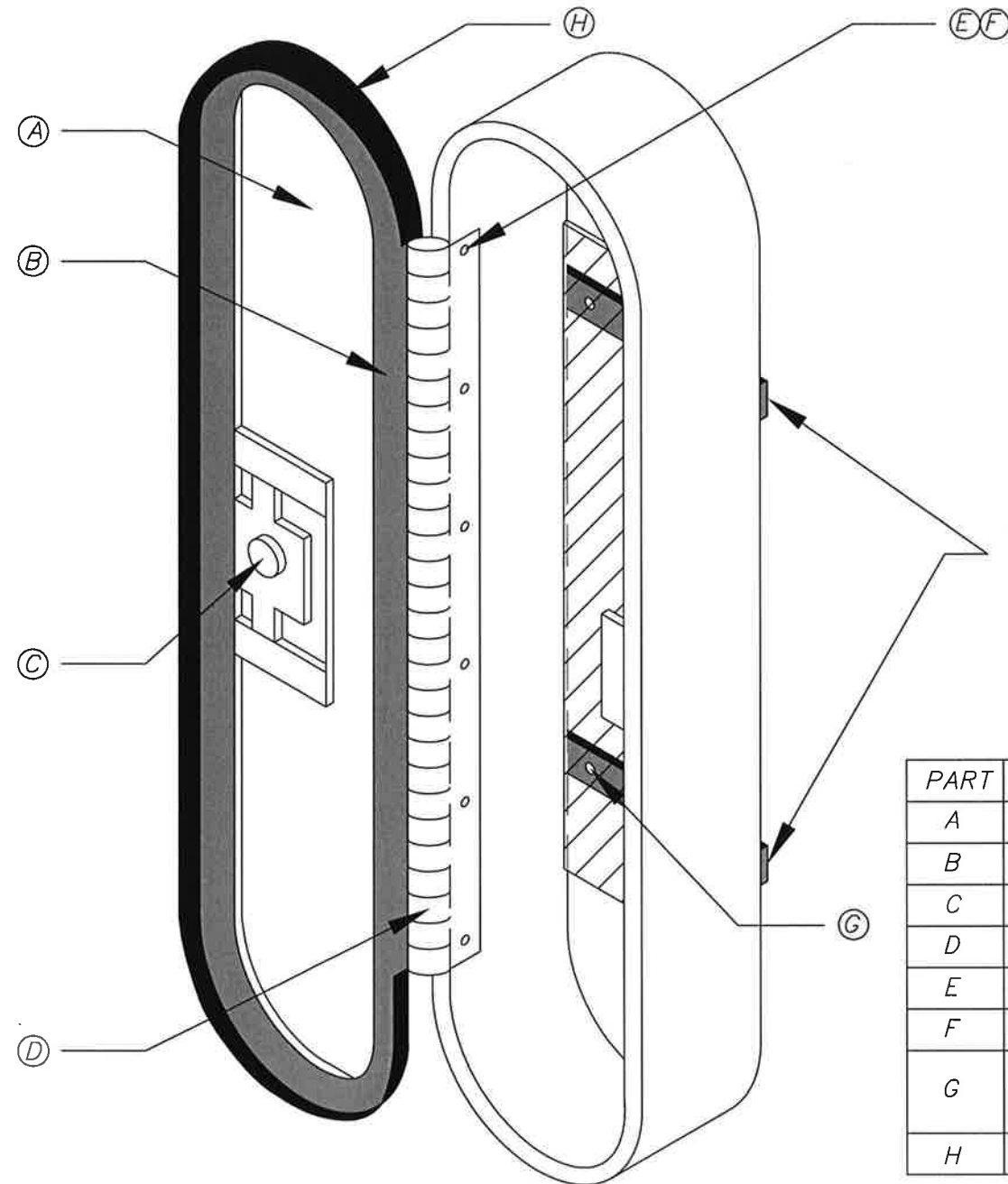
**INTERNAL TERMINAL
 COMPARTMENT
 DETAIL**

SHEET 1 OF 2

PC.J1.6



SIDE VIEW



ISOMETRIC VIEW

WELDED TO INTERNAL TERMINAL COMPARTMENT FRAME.

PART	DESCRIPTION	MATERIAL
A	STAINLESS STEEL (SS) COVER	TYPE 304 SS
B	NEOPRENE GASKET	
C	KEYED "BEST" BRAND LOCK	
D	STAINLESS STEEL PIANO HINGE WELDED TO DOOR	TYPE 304 SS
E	1/4" FLAT WASHER NARROW	118-8 SS
F	1/4" SOCKET HEAD CAP SCREW, LENGTH 3/4"	118-8 SS
G	1/4" WASHER AND 1/4" SOCKET HEAD CAP SCREW, LENGTH 1"	118-8 SS
H	RAIN COVER (1" WIDE)	

NOTE: ALL OTHER PART MATERIALS TO BE GALVANIZED.

(NOT TO SCALE)



Pierce County

Public Works and Utilities
 Office of the County Engineer
 Tacoma Mall Office Building
 4301 South Pine Street, Suite 446
 Tacoma, Washington 98409-7207
 An APWA Accredited Agency



BRIAN D. STACY, P.E.
 COUNTY ENGINEER

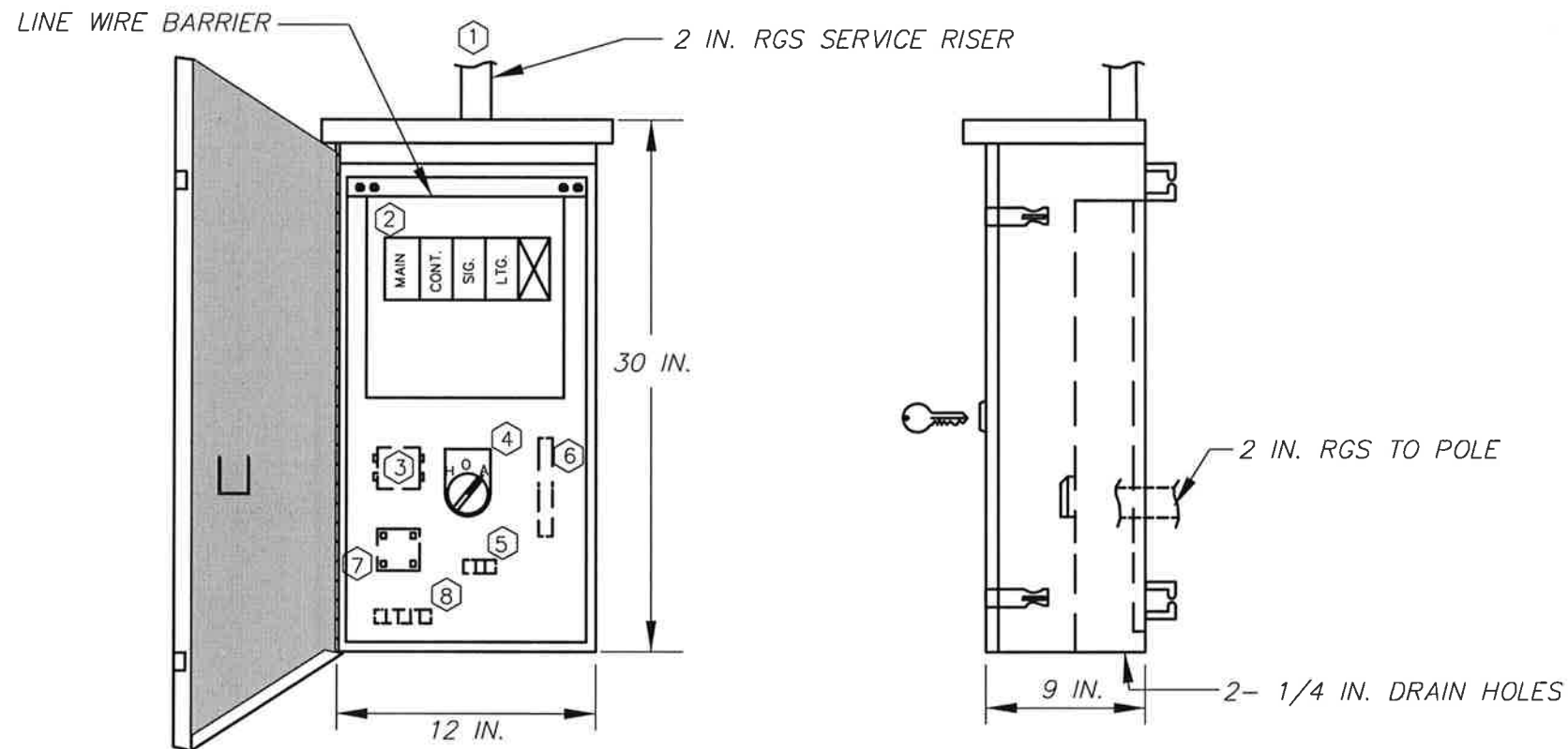
Office of the County Engineer

4-15-10

**INTERNAL TERMINAL
 COMPARTMENT
 DETAIL**

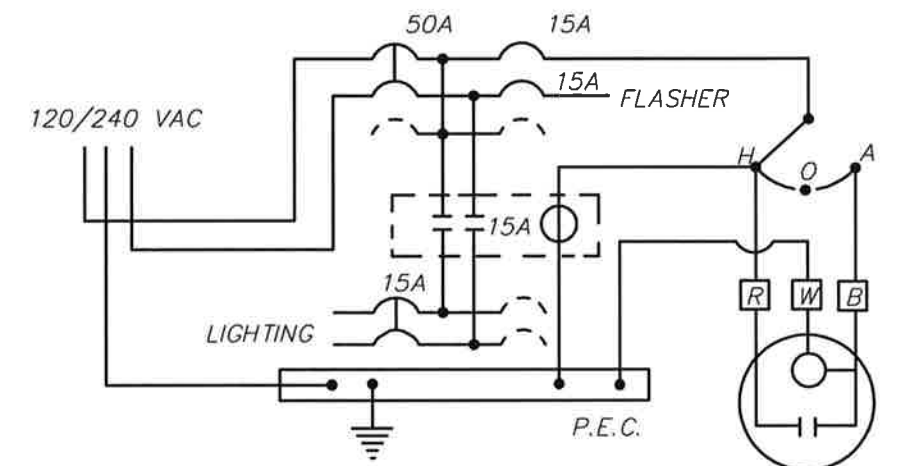
SHEET 2 OF 2

PC.J1.7



CABINET: NEMA 3R-POLE MOUNTED WITH TOP OF CABINET FEED
 ALUMINUM ONLY
 HINGED COVER, 2-STAINLESS STEEL DRAW HASPS
 "BEST" LOCK ON DOOR (BRASS, SPRING RETURN TAPERED BOLT)
 PAINT- ASA G1 GRAY

ITEM	COMPONENT SCHEDULE
1	SERVICE CONNECTION PER UTILITY REQUIREMENTS CONTRACTOR TO VERIFY WITH SERVING UTILITY
2	PANEL BOARD, 125A, 120/240 VAC., 1 PHASE 3W. MAIN 50A 2P CONTROL 15A 1P SIGNAL 15A 1P LIGHTING 15A 2P
3	CONTACTOR, 30A, 2-POLE, 600V, 120V COIL, 120VA INRUSH, 60 HZ
4	CONTROL SWITCH, 15A., SPDT "HAND-OFF-AUTO" NAMEPLATE
5	3-POINT TERMINAL BLOCK FOR CONNECTION TO REMOTE PHOTO CELL
6	COPPER NEUTRAL
7	SOLID STATE NEMA SIGNAL FLASHER PER W.S.D.O.T. STANDARD SPECS 4 PIN TYPE
8	FLASHER TERMINAL BLOCK FOR FIVE #12AWG SIGNAL CONDUCTORS PER W.S.D.O.T. STANDARD SPECS



(NOT TO SCALE)



Pierce County

Public Works and Utilities
 Office of the County Engineer
 Tacoma Mall Office Building
 4301 South Pine Street, Suite 446
 Tacoma, WA 98409-7207

DATE	REVISION	APPROVED	DRAWN



BRIAN D. STACY, P.E.
 COUNTY ENGINEER

Office of the County Engineer

**POLE MOUNTED
 SIGNAL / FLASHER
 ELECTRICAL
 SERVICE PANEL**

PC-J2.1

CONTRACTOR TO VERIFY REQUIREMENTS & ACCEPTABILITY WITH SERVICE COMPANY

COMPONENT SCHEDULE:

METER BASE, 100 AMP, 4 JAW, WITH BYPASS BLOCKS, LEVERS, AND/OR SHUNTS PER UTILITY COMPANY.

PANEL BOARD 120/240 VAC, 1 PHASE, 3 WIRE, 125 AMP, 12CKT, COPPER BUS, WESTINGHOUSE TYPE BAB BOLT-ON-BREAKERS, 10 KAIC, S.U.S.E. 100/2 MAIN (WESTINGHOUSE BAB 2100). BREAKERS SIZED PER CONTRACT SPECIAL PROVISIONS.

LIGHTING CONTACTOR, 30 A, 2 POLE, 600 VOLT, 120 VOLT COIL TE/GOULD #2200EB3ZOAA, 1 REQUIRED.

DUPLEX RECEPTACLE, 120 VOLT 20 A.

PHOTO-CELL BYPASS SWITCH, 15 A, SPDT, 120 VOLT.

THREE POINT TERMINAL BLOCK FOR REMOTE PHOTO CELL.

CABINET:

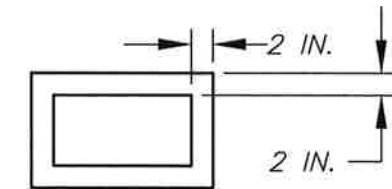
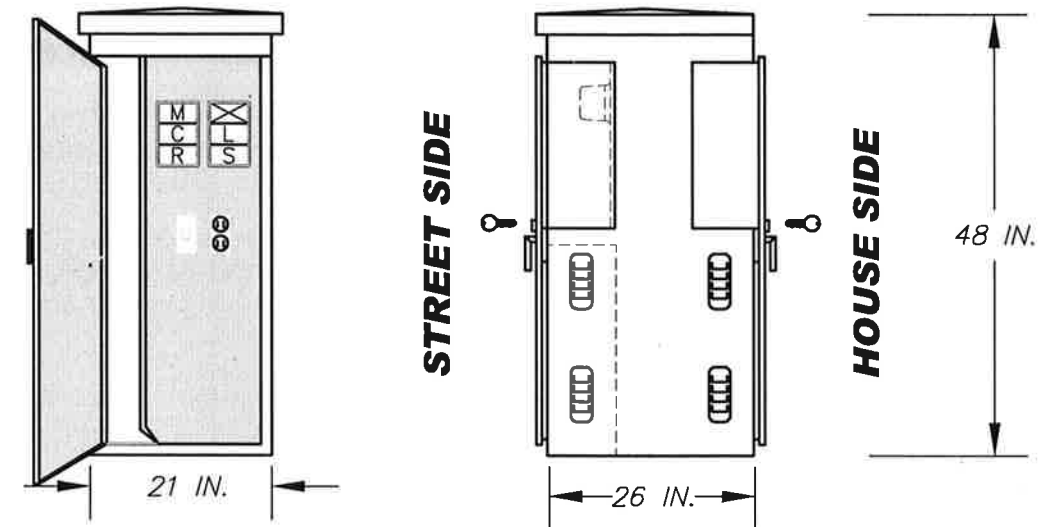
NEMA 3R, PADMOUNT, 1/8 INCH MILL FINISH ALUMINUM CONSTRUCTION, REMOVABLE EQUIPMENT MOUNTING PAN, 2 SCREENED & GASKETTED VENTS, HINGED DEADFRONT.

LOWER DOOR: HEAVY DUTY CONCEALED HINGE, LIFT-OFF TYPE, STAINLESS STEEL VAULT HANDLES, BEST CX LOCK WITH BLUE CONSTRUCTION CORE, CLOSED CELL NEOPRENE GASKET.

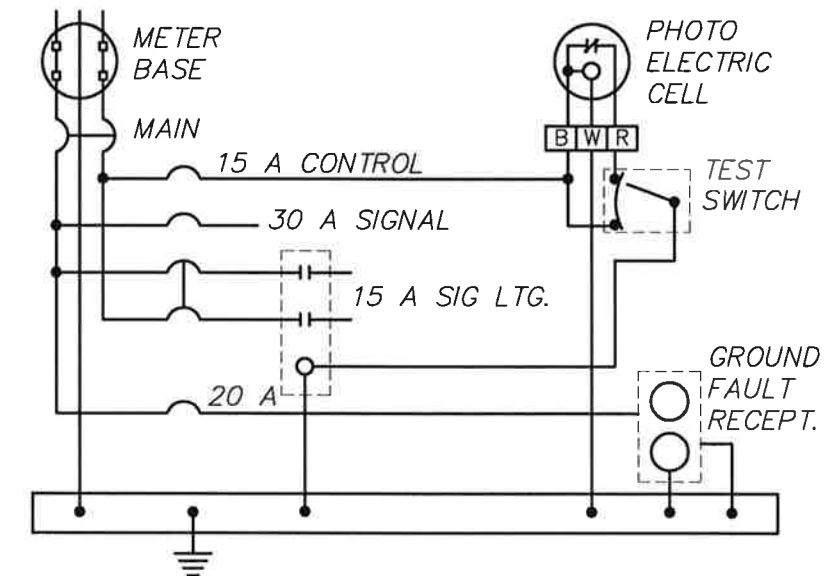
METER DOOR: HEAVY DUTY CONCEALED HINGE, 3-SIDED TO FULLY EXPOSE METER WHEN OPENED, PADLOCKABLE, POLISHED WIRE 4 IN. X 4 IN. GLASS WINDOW, DOUBLE DOORS.

PAINT: ANODIZED ALUMINUM WITH CLEAR GRAFFITI RESISTANT COATING.

WIRED AND LABELED PER UL STANDARD #508, SUITABLE FOR USE AS SERVICE EQUIPMENT.



CABINET BASE



(NOT TO SCALE)



Pierce County

Public Works and Utilities
Office of the County Engineer
Tacoma Mall Office Building
4301 South Pine Street, Suite 446
Tacoma, Washington 98409-7207
An APWA Accredited Agency



BRIAN D. STACY, P.E.
COUNTY ENGINEER

Office of the County Engineer

5-12-10

**SERVICE CABINET
FOR TRAFFIC
SIGNAL**

PC.J2.2

CONTRACTOR TO VERIFY REQUIREMENTS & ACCEPTABILITY WITH SERVICE COMPANY

COMPONENT SCHEDULE:

METER BASE, 200 AMP, 4 JAW, WITH BYPASS BLOCKS, LEVERS, AND/OR SHUNTS PER UTILITY COMPANY.

PANEL BOARD 120/240 VAC, 1 PHASE, 3 WIRE, 225 AMP, 12CKT, COPPER BUS, WESTINGHOUSE TYPE BAB BOLT-ON-BREAKERS, 10 KAIC, S.U.S.E. 200/2 MAIN (WESTINGHOUSE BJ 2200). BREAKERS SIZED PER CONTRACT SPECIAL PROVISIONS.

LIGHTING CONTACTORS, 30 A, 2 POLE, 600 VOLT, 120 VOLT COIL TE/GOULD #2200EB3Z0AA, 3 REQUIRED.

DUPLEX RECEPTACLE, 120 VOLT 20 A.

PHOTO-CELL BYPASS SWITCH, 15 A, SPDT, 120 VOLT.

THREE POINT TERMINAL BLOCK FOR REMOTE PHOTO CELL.

CABINET:

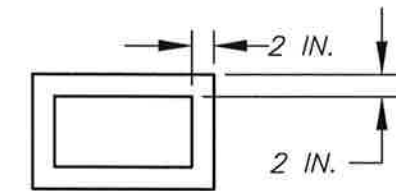
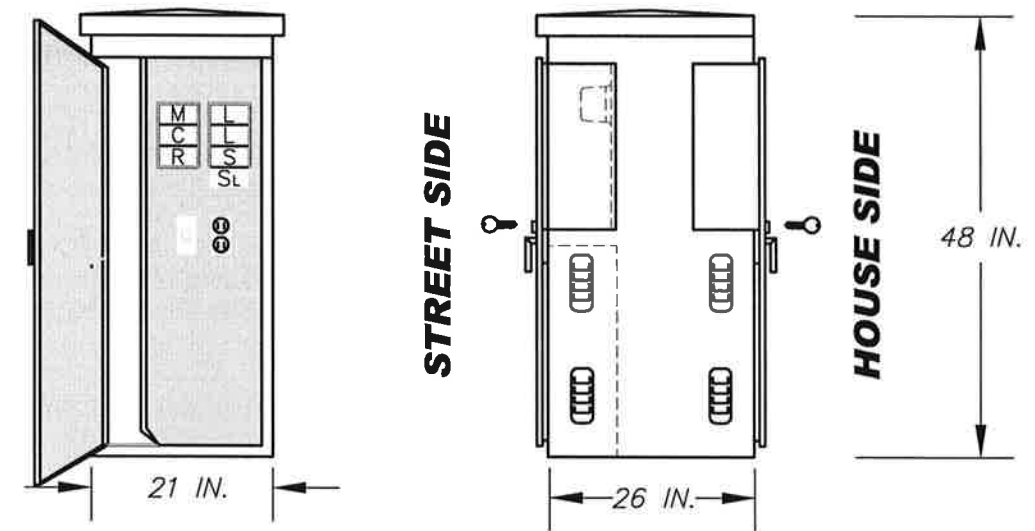
NEMA 3R, PADMOUNT, 1/8 INCH MILL FINISH ALUMINUM CONSTRUCTION, REMOVABLE EQUIPMENT MOUNTING PAN, 2 SCREENED & GASKETTED VENTS, HINGED DEADFRONT.

LOWER DOOR: HEAVY DUTY CONCEALED HINGE, LIFT-OFF TYPE, STAINLESS STEEL VAULT HANDLES, BEST CX LOCK WITH BLUE CONSTRUCTION CORE, CLOSED CELL NEOPRENE GASKET.

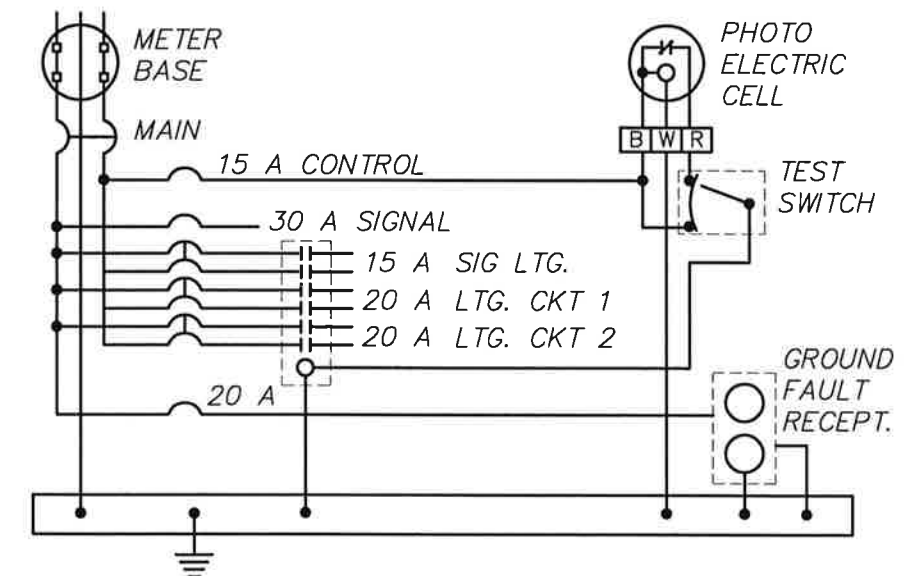
METER DOOR: HEAVY DUTY CONCEALED HINGE, 3-SIDED TO FULLY EXPOSE METER WHEN OPENED, PADLOCKABLE, POLISHED WIRE 4 IN. X 4 IN. GLASS WINDOW, DOUBLE DOORS.

PAINT: ANODIZED ALUMINUM WITH CLEAR GRAFFITI RESISTANT COATING.

WIRED AND LABELED PER UL STANDARD #508, SUITABLE FOR USE AS SERVICE EQUIPMENT.



CABINET BASE



(NOT TO SCALE)



Pierce County

Public Works and Utilities
Office of the County Engineer
Tacoma Mall Office Building
4301 South Pine Street, Suite 446
Tacoma, Washington 98409-7207
An APWA Accredited Agency



BRIAN D. STACY, P.E.
COUNTY ENGINEER

Office of the County Engineer

5-12-10

**SERVICE CABINET
FOR TRAFFIC
SIGNAL AND
AUXILIARY STREET
LIGHTING**

PC.J2.3

CONTRACTOR TO VERIFY REQUIREMENTS & ACCEPTABILITY WITH SERVICE COMPANY

COMPONENT SCHEDULE:

METERBASE, 100 AMP, 4 JAW, WITH BYPASS BLOCKS, LEVERS, AND/OR SHUNTS PER UTILITY COMPANY.

PANEL BOARD 120/240 VAC, 1 PHASE, 3 WIRE, 125 AMP, 12CKT, COPPER BUS, WESTINGHOUSE TYPE BAB BOLT-ON-BREAKERS, 10 KAIC, S.U.S.E. 100/2 MAIN (WESTINGHOUSE BAB 2100). BREAKERS SIZED PER CONTRACT SPECIAL PROVISIONS.

LIGHTING CONTACTORS, 30 A, 2 POLE, 600 VOLT, 120 VOLT COIL TE/GOULD #2200EB3Z0AA, 3 REQUIRED.

DUPLEX RECEPTACLE, 120 VOLT 20 A.

PHOTO-CELL BYPASS SWITCH, 15 A, SPDT, 120 VOLT.

THREE POINT TERMINAL BLOCK FOR REMOTE PHOTO CELL.

CABINET:

NEMA 3R, PADMOUNT, 1/8 INCH MILL FINISH ALUMINUM CONSTRUCTION, REMOVABLE EQUIPMENT MOUNTING PAN, 2 SCREENED & GASKETTED VENTS, HINGED DEADFRONT.

LOWER DOOR: HEAVY DUTY CONCEALED HINGE, LIFT-OFF TYPE, STAINLESS STEEL VAULT HANDLES, BEST CX LOCK WITH BLUE CONSTRUCTION CORE, CLOSED CELL NEOPRENE GASKET.

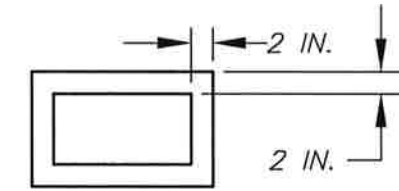
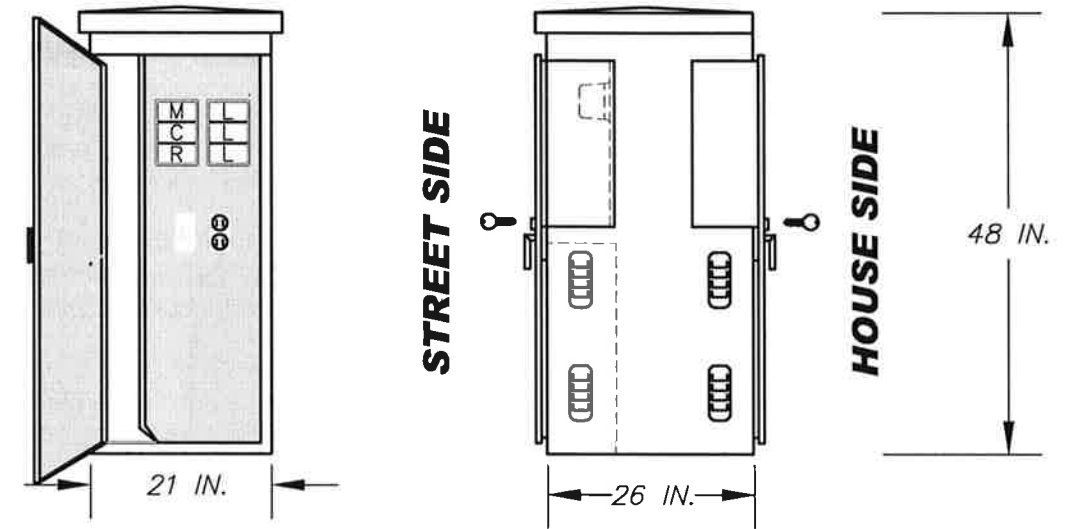
METER DOOR: HEAVY DUTY CONCEALED HINGE, 3-SIDED TO FULLY EXPOSE METER WHEN OPENED, PADLOCKABLE, POLISHED WIRE 4 IN. X 4 IN. GLASS WINDOW, DOUBLE DOORS.

PAINT: ANODIZED ALUMINUM WITH CLEAR GRAFFITI RESISTANT COATING.

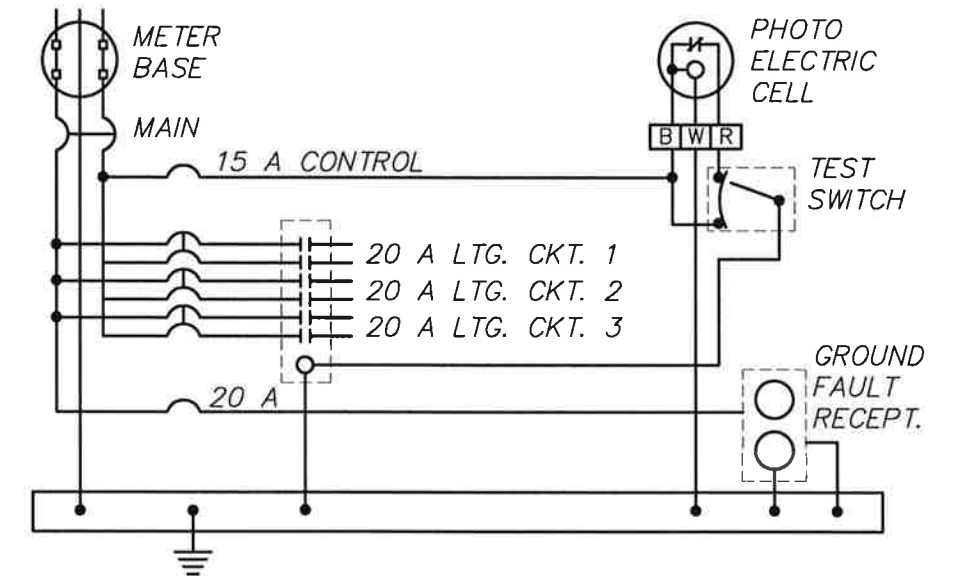
WIRED AND LABELED PER UL STANDARD #508, SUITABLE FOR USE AS SERVICE EQUIPMENT.

FOUNDATION

WHEN THE CABINET IS A STAND ALONE CABINET THE FOUNDATION SHOWN ON PC.J2.5 SHALL BE REDUCED TO PROVIDE AN ADDITIONAL 2 IN. WIDTH & LENGTH FROM CABINET DIMENSIONS AND 12 IN. TALL, WITH 12 IN. PORCH ON HOUSE SIDE.



CABINET BASE



(NOT TO SCALE)



Pierce County

Public Works and Utilities
Office of the County Engineer
Tacoma Mall Office Building
4301 South Pine Street, Suite 446
Tacoma, Washington 98409-7207
An APWA Accredited Agency



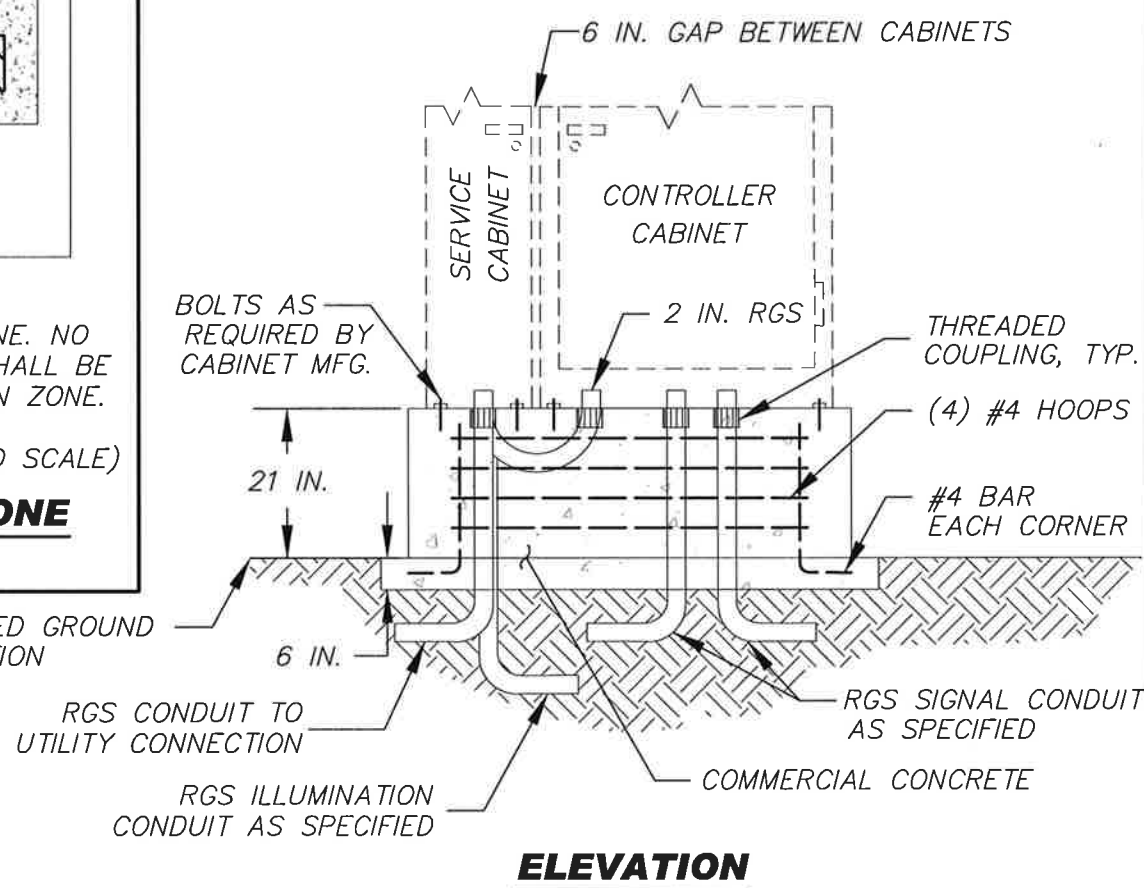
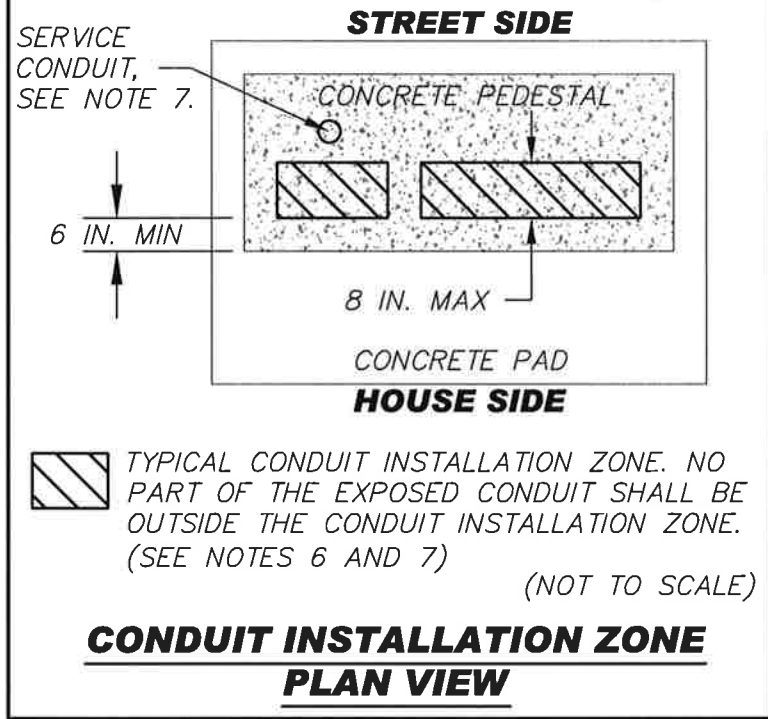
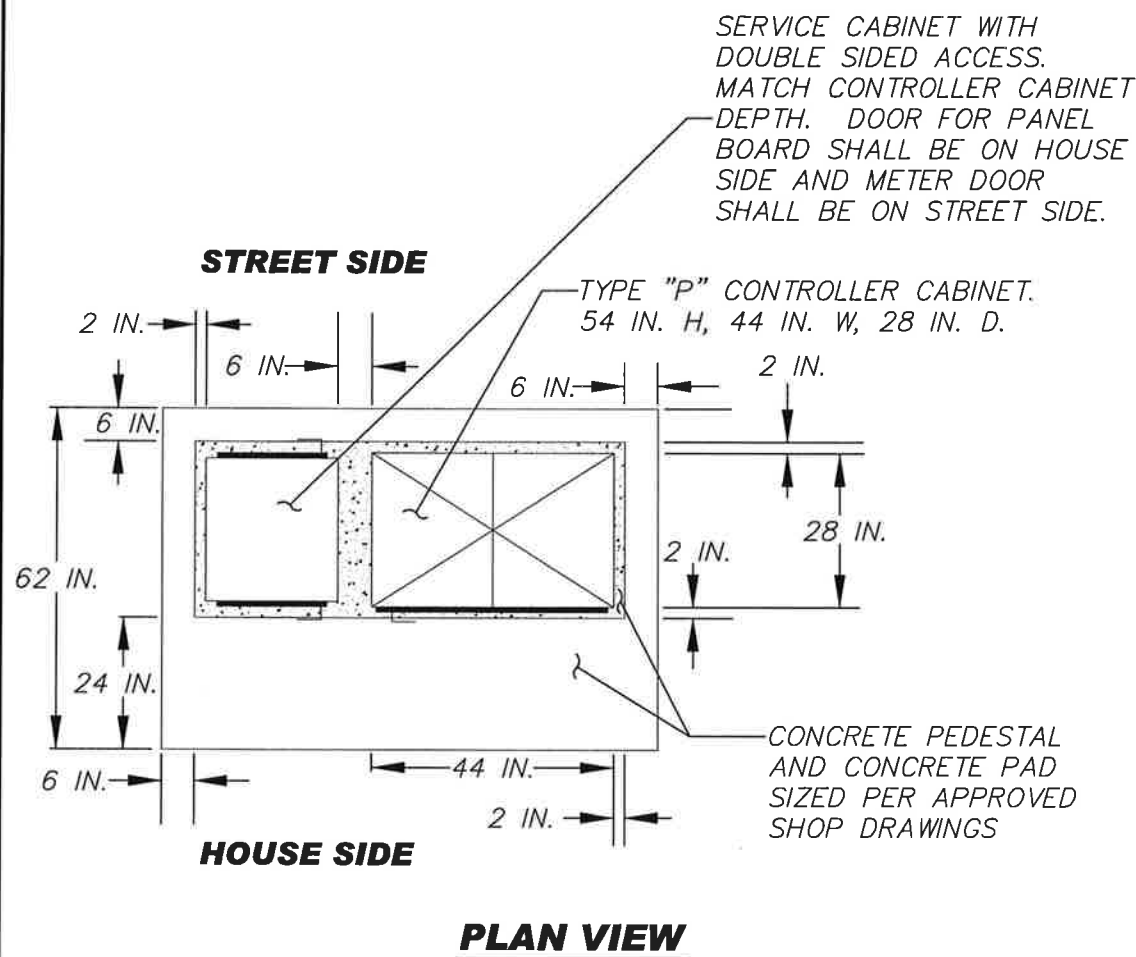
BRIAN D. STACY, P.E.
COUNTY ENGINEER

Office of the County Engineer

5-12-10

**SERVICE CABINET
FOR STREET
LIGHTING**

PC.J2.4



- NOTES:**
- SERVICE CABINET TO BE INSTALLED ON LEFT SIDE OF CONTROLLER CABINET. CONTROLLER CABINET DOOR TO OPEN OPPOSITE TO SERVICE CABINET LOCATION.
 - 3/8 IN. Ø PLASTIC DRAIN TUBE TO BE PROVIDED FROM BASE OF EACH CABINET TO TOP OF CONCRETE PAD AT HOUSE SIDE OF CONCRETE PEDESTAL.
 - DIMENSIONS TO SUIT CABINETS; CONTRACTOR SHALL VERIFY ACTUAL CABINET MEASUREMENTS PRIOR TO FORMING CONCRETE PAD AND PEDESTAL.
 - CONCRETE PAD SHALL HAVE A BRUSHED FINISH; THE CONCRETE PEDESTAL TOP SHALL HAVE A SMOOTH, TROWEL FINISH, WITH 1/2 IN. ROUND FILLET ON OUTSIDE TOP EDGE.
 - SEAL CONCRETE PEDESTAL TOP WITH SILVER PAINT. APPLY ADEQUATE OUTDOOR SEALANT JUST PRIOR TO PLACING CABINET. SEAL CABINET TO CONCRETE PEDESTAL. APPLY DRESS BEADING AROUND CABINET TO COMPLETE SEAL. REFER TO SPECIAL PROVISIONS FOR ADDITIONAL INFORMATION.
 - CONDUITS SHALL BE INSTALLED WITHIN THE FRONT HALF OF THE CONTROLLER AND SERVICE CABINETS. THE NEAREST EDGE OF THE EXPOSED CONDUIT SHALL BE SPACED 6 IN. MIN TO 9 IN. MAX MEASURED FROM THE HOUSE SIDE OF THE CONCRETE PEDESTAL. THE EXPOSED CONDUIT SHALL NOT INTERFERE WITH THE CABINET BASE.
 - SERVICE CONDUIT INTO THE SERVICE CABINET SHOULD FOLLOW LOCAL POWER UTILITY SPECIFICATIONS. SOME UTILITIES MAY REQUIRE A DATA CONDUIT.
- (NOT TO SCALE)

Pierce County
 Public Works and Utilities
 Office of the County Engineer
 Tacoma Mall Office Building
 4301 South Pine Street, Suite 446
 Tacoma, Washington 98409-7207
 An APWA Accredited Agency

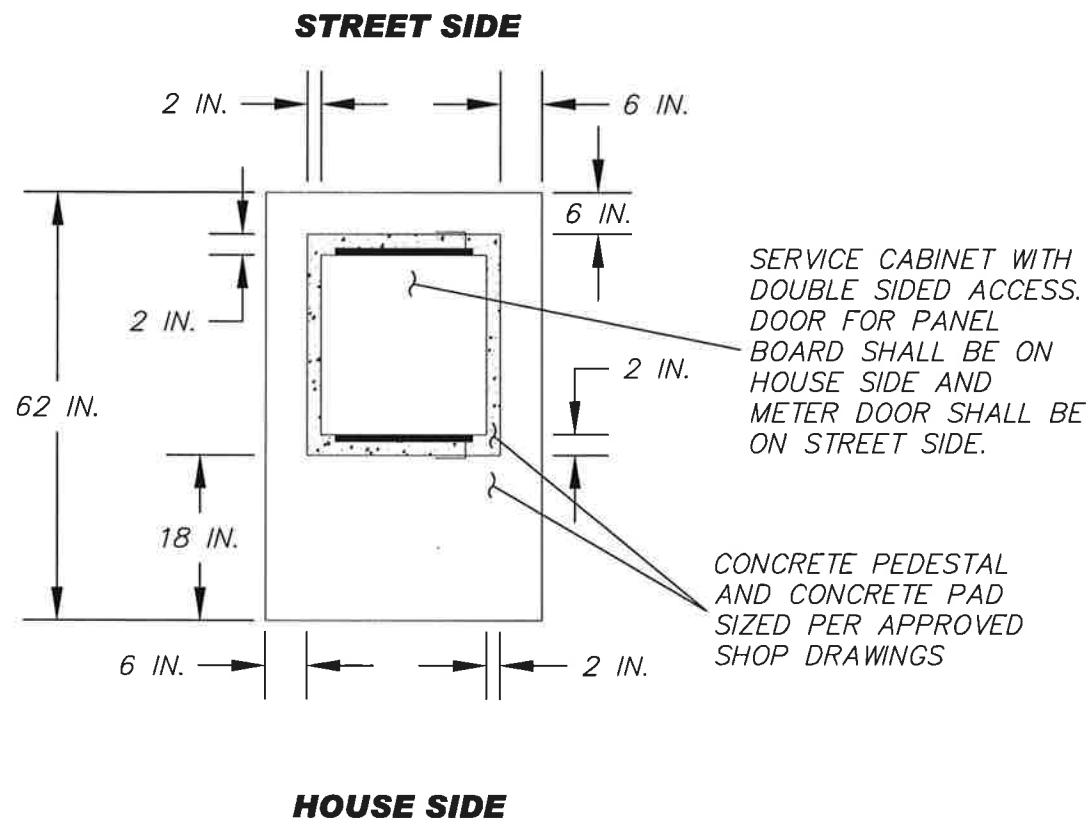
BRIAN D. STACY, P.E.
 COUNTY ENGINEER

4-15-10

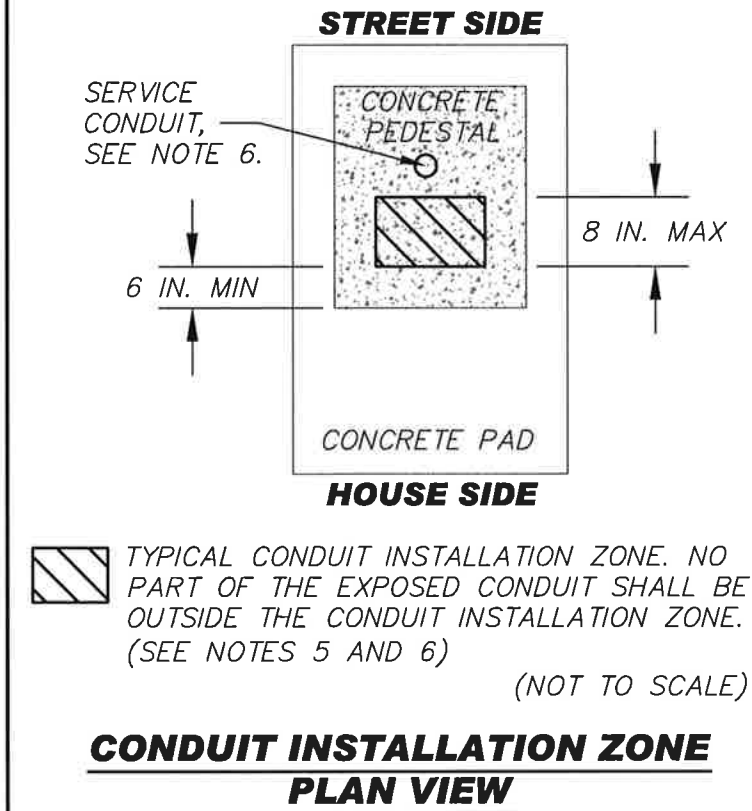
Office of the County Engineer

**COMBINED
 CONTROLLER AND
 SERVICE CABINET
 PEDESTAL**

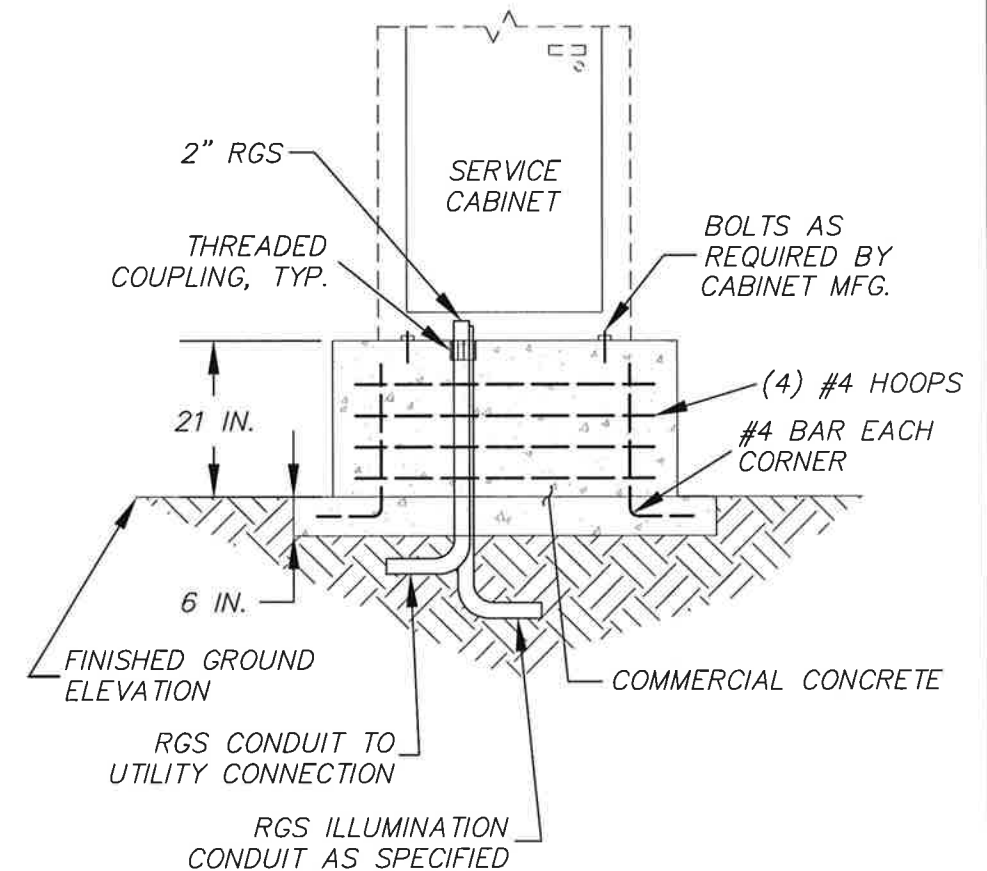
PC-J2.5



PLAN VIEW



**CONDUIT INSTALLATION ZONE
PLAN VIEW**



ELEVATION

NOTES:

- 1) 3/8 IN. Ø PLASTIC DRAIN TUBE TO BE PROVIDED FROM BASE OF CABINET TO TOP OF CONCRETE PAD AT HOUSE SIDE OF CONCRETE PEDESTAL.
- 2) DIMENSIONS TO SUIT CABINET; CONTRACTOR SHALL VERIFY ACTUAL CABINET MEASUREMENTS PRIOR TO FORMING CONCRETE PAD AND PEDESTAL.
- 3) CONCRETE PAD SHALL HAVE A BRUSHED FINISH; THE CONCRETE PEDESTAL TOP SHALL HAVE A SMOOTH, TROWEL FINISH, WITH 1/2 IN. ROUND FILLET ON OUTSIDE TOP EDGE.
- 4) SEAL CONCRETE PEDESTAL TOP WITH SILVER PAINT. APPLY ADEQUATE OUTDOOR SEALANT JUST PRIOR TO PLACING CABINET. SEAL CABINET TO CONCRETE PEDESTAL. APPLY DRESS BEADING AROUND CABINET TO COMPLETE SEAL. REFER TO SPECIAL PROVISIONS FOR ADDITIONAL INFORMATION.
- 5) CONDUITS SHALL BE INSTALLED WITHIN THE FRONT HALF OF THE SERVICE CABINET. THE NEAREST EDGE OF THE EXPOSED CONDUIT SHALL BE SPACED 6 IN. MIN TO 9 IN. MAX MEASURED FROM THE HOUSE SIDE OF THE CONCRETE PEDESTAL. THE EXPOSED CONDUIT SHALL NOT INTERFERE WITH THE CABINET BASE.
- 6) SERVICE CONDUIT INTO THE SERVICE CABINET SHOULD FOLLOW LOCAL POWER UTILITY SPECIFICATIONS. SOME UTILITIES MAY REQUIRE A DATA CONDUIT.

(NOT TO SCALE)



Pierce County

Public Works and Utilities
Office of the County Engineer
Tacoma Mall Office Building
4301 South Pine Street, Suite 446
Tacoma, Washington 98409-7207
An APWA Accredited Agency

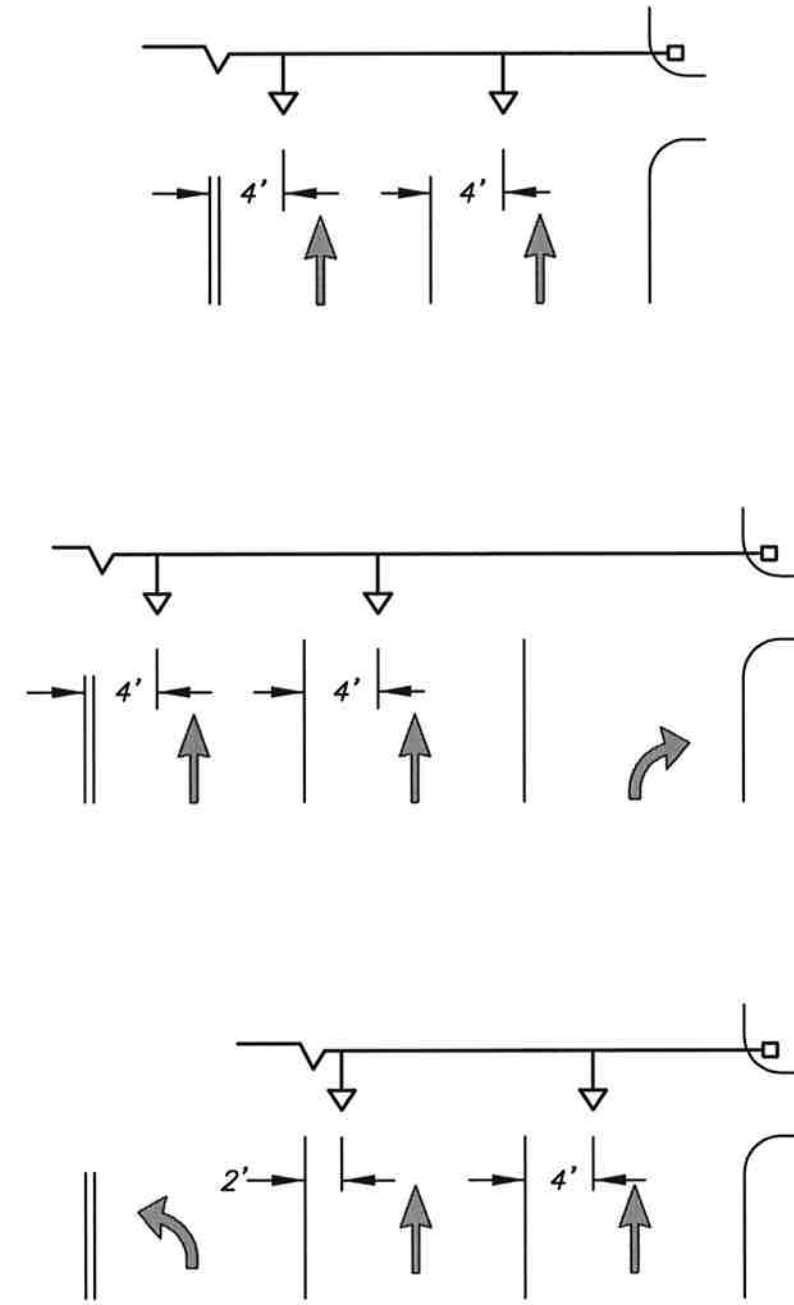
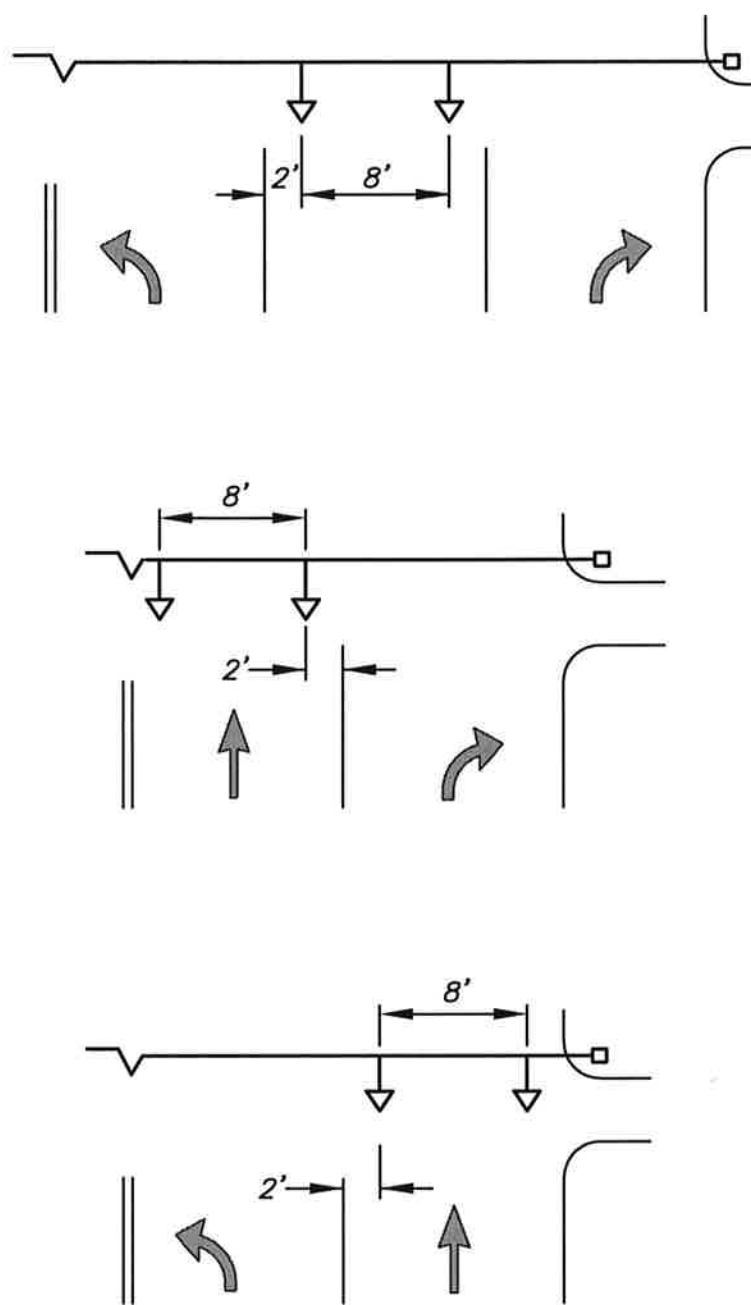
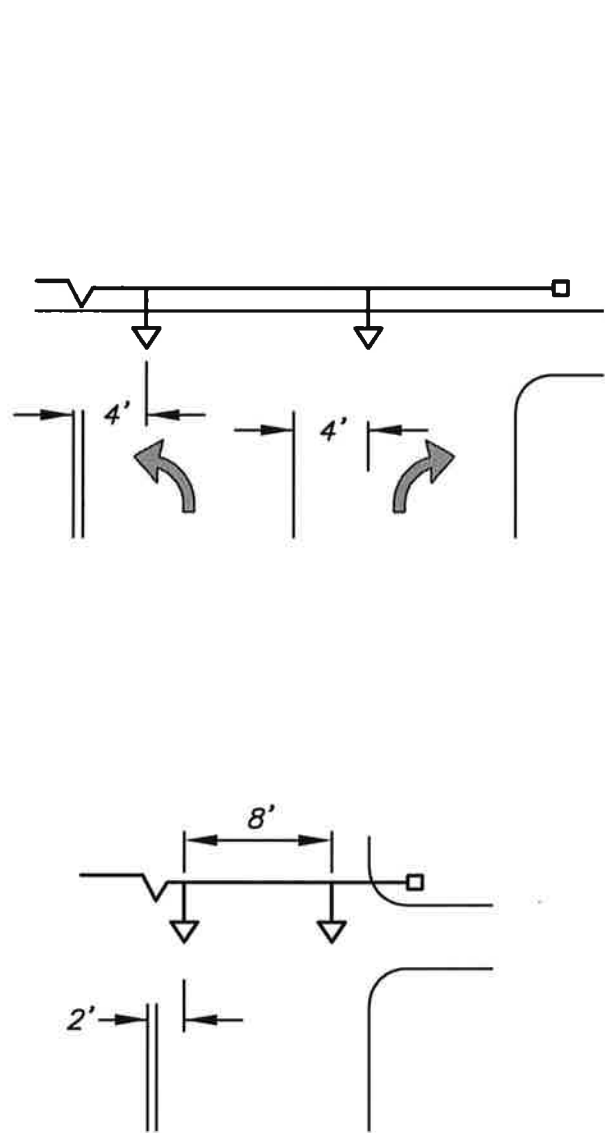


BRIAN D. STACY, P.E.
COUNTY ENGINEER

Office of the County Engineer

**STAND ALONE SERVICE
CABINET PEDESTAL**

PC.J2.6



PERMISSIVE TURNS

(NOT TO SCALE)



Pierce County

Public Works and Utilities
Office of the County Engineer
Tacoma Mall Office Building
4301 South Pine Street, Suite 446
Tacoma, WA 98409-7207

DATE	REVISION	APPROVED	DRAWN

BRIAN D. STACY, P.E.
COUNTY ENGINEER

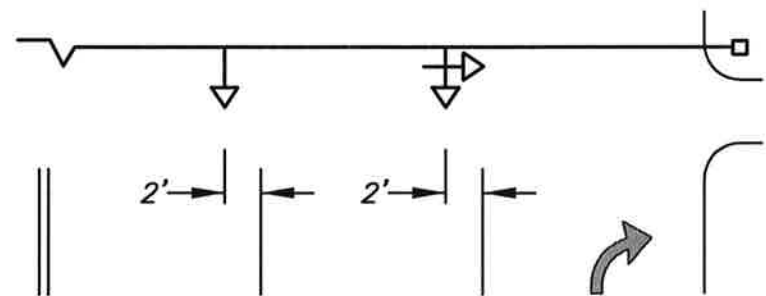
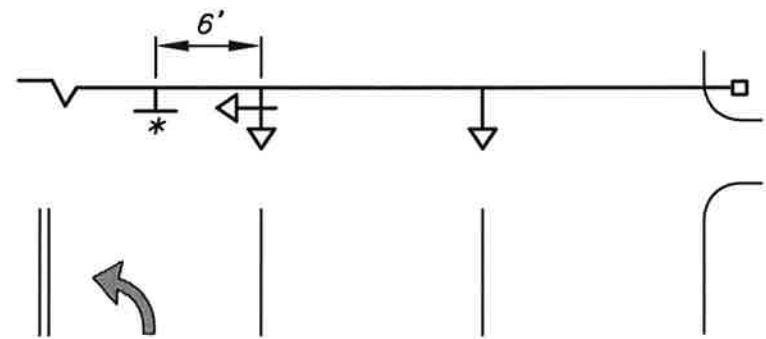
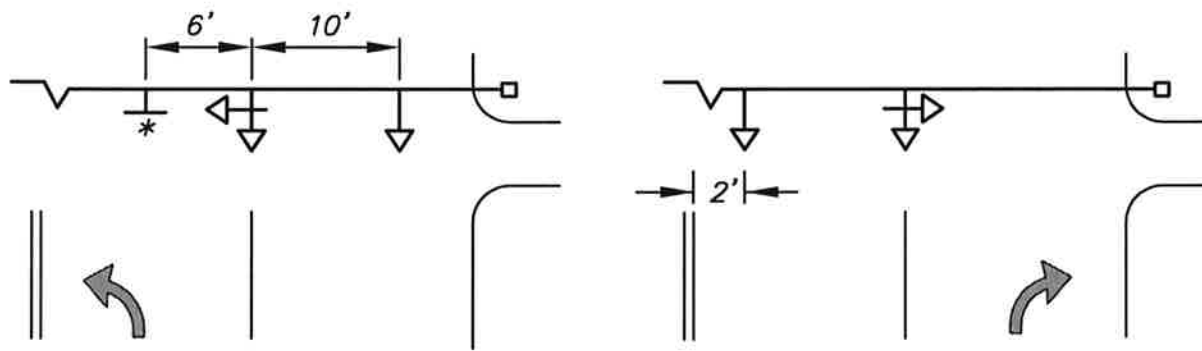
7-1-09

Office of the County Engineer

**TRAFFIC SIGNAL
HEAD ALIGNMENT**

SHEET 1 OF 2

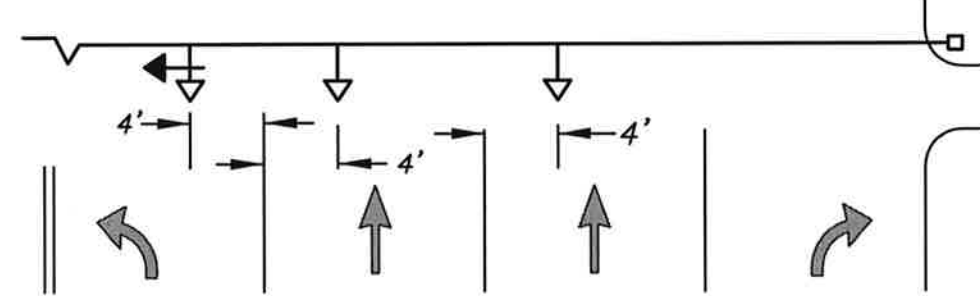
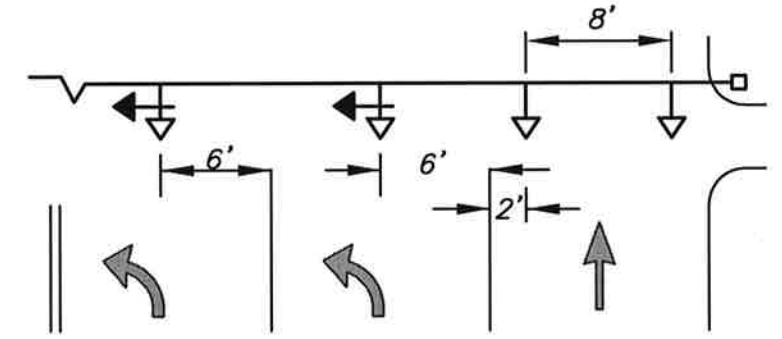
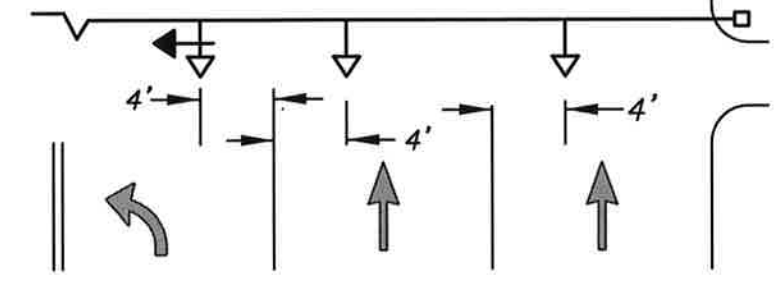
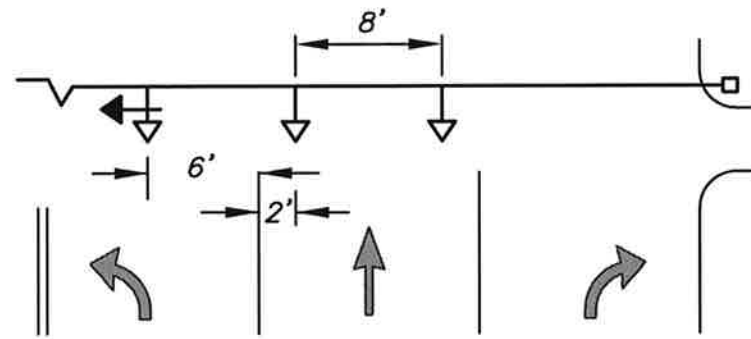
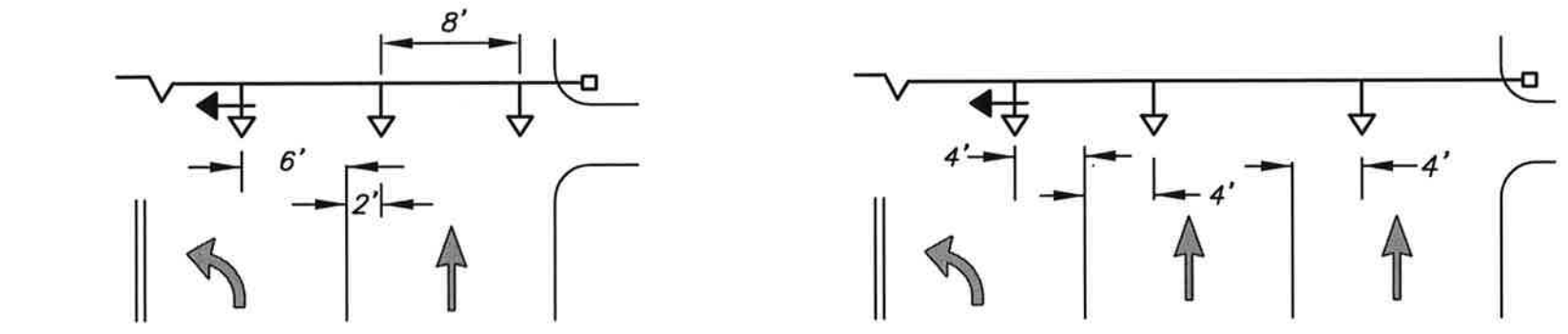
PC.J3.1



PROTECTED / PERMISSIVE TURNS

(IF NO TURN LANE EXISTS, USE ALIGNMENT FOR PERMISSIVE TURNS)

* - LOCATION OF LEFT TURN MUST YIELD ON GREEN SIGN



PROTECTED TURNS

(NOT TO SCALE)



Pierce County

Public Works and Utilities
Office of the County Engineer
Tacoma Mall Office Building
4301 South Pine Street, Suite 446
Tacoma, WA 98409-7207

DATE	REVISION	APPROVED	DRAWN

BRIAN D. STACY, P.E.
COUNTY ENGINEER

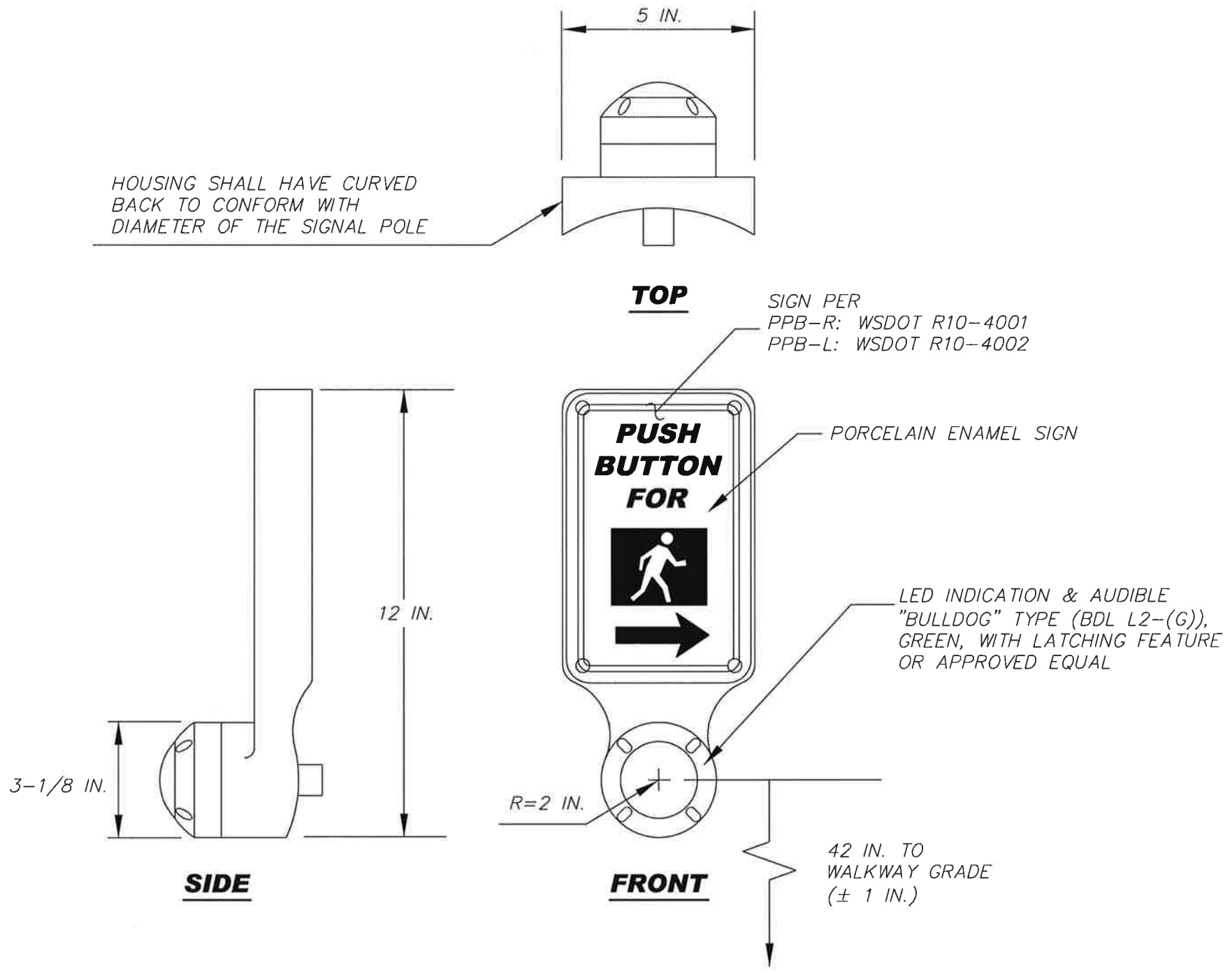
7-1-09

Office of the County Engineer

**TRAFFIC SIGNAL
HEAD ALIGNMENT**

SHEET 2 OF 2

PC.J3.2




(NOT TO SCALE)



Pierce County
 Public Works and Utilities
 Office of the County Engineer
 Tacoma Mall Office Building
 4301 South Pine Street, Suite 446
 Tacoma, WA 98409-7207

DATE	REVISION	APPROVED	DRAWN


BRIAN D. STACY, P.E.
 COUNTY ENGINEER
 Office of the County Engineer

**PEDESTRIAN
 PUSHBUTTON**

PC.J4