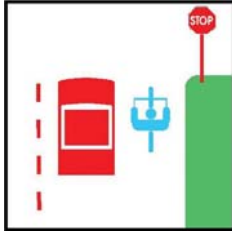
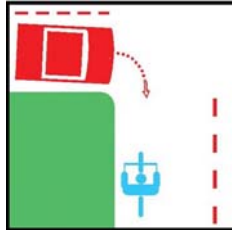


PIERCE COUNTY BIKE MAP

SIX TIPS FOR BICYCLING SAFETY



Obey All Traffic Laws. Bicyclists are required to follow the same traffic laws as motorists. Bicyclists should obey all traffic signs, signals, and pavement markings.



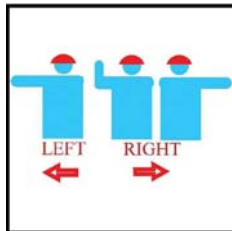
Ride With Traffic. Bicyclists should always ride in the same direction as traffic. Riding against traffic is illegal and unsafe. Motorists are not looking for bicyclists riding on the wrong side of the road.



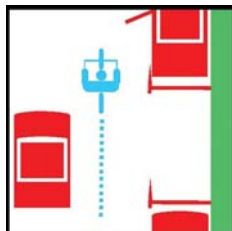
Dress Appropriately. Any person bicycling or riding as a bicycle passenger in any public area in unincorporated Pierce County is required to wear a bicycle helmet. Bicyclists should wear bright clothing when riding and wear reflective clothing or straps at night.



Ride A Well-Equipped Bicycle. Bicycles should be adjusted to fit the rider properly and should be outfitted with bells, rear-view mirrors, fenders, and baskets or bike bags. Bicycles are required to have a white headlight and a red rear reflector when ridden at night.



Use Hand Signals. Hand signals tell motorists of the bicyclist's intended actions. Bicyclists should use hand signals before making turns and lane changes.



Ride Defensively. Bicyclists should always be aware of adjacent traffic. Ride in a straight line whenever possible and to the right of traffic when riding on roadways. Bicyclists should leave adequate space between themselves and parked vehicles.

For more information about other bicycling safety tips, please refer to the "Bicycling Resources and Other References" section of this map.