

Waste Free Gift Catalog

SHOW YOU CARE



Pierce County
Public Works and Utilities

CLOTHING

FURNITURE, HOME INTERIOR
& DECORATING

LANDSCAPING & GARDENING

ORGANIC

SOLAR

MISCELLANEOUS

RECYCLED FASHIONS

Giving recycled fashion gifts makes looking good feel great. Recycled fashion is a trend for all ages. Even among non-eco-savvy shoppers recycled fashions have been a hot trend.



Waste free shopping is fun with this catalog of gifts for all seasons, birthdays, anniversaries and special occasions. If gifts are on your list, you'll find some great suggestions. Keep in mind, these gift suggestions are not only for the winter holiday season, but all year round.*

*Inclusion of these products and manufacturers does not constitute a recommendation or endorsement. Contact the Pierce County Solid Waste Division by email at pcsolidwaste@co.pierce.wa.us or call us at (253) 798-2179 if you would like to nominate eco-friendly products for inclusion in future updates.

CLOTHING & ACCESSORIES

Recycled Fashions

Since 1995, Patagonia has been using organic cotton fibers in 100% of its products. In addition, its PCR® Synchronilla® clothing line has a 50-90% post-consumer recycled content (recycled 2-liter plastic soda bottles). The recycled plastic is spun into a fiber that has the same soft feel and lustrous color as virgin fleece. Each of the garments, such as jackets and pullovers, keeps an average of 25 soda bottles out of the landfill. Also, check out their Capilene® "Common Threads Recycling" Program.

PATAGONIA

2100 First Ave., Seattle, WA 98121
(206) 622-9700 or 1-800-638-6464
www.patagonia.com

Hats & More

99% recycled. 100% individual style. 'e ko logic makes one-of-a-kind headwear from recycled wool sweaters. Each hat is handcrafted to eliminate imperfections. These colorful hats are fun to look at and cozy to wear.

'E KO LOGIC, INC.
(518) 274-0813
www.ekologic.com



Purse

From license plate purses to bottle cap belts Littleearth has made a business from recycling goods into unbelievably

hip fashion products. Last year, Littleearth actively recycled—among other things—more than 30 tons of rubber, 40,000 license plates and 1/4 million bottle caps.

LITTLEARTH

1-800-545-3784
www.littleearth.com



Shoes

The creators of Simple make no bones about declaring that they are a laid-back, anti-stereotype company, proudly describing themselves as "A nice little shoe company from Santa Barbara." They are folksy yet funky designers with more than just style; they've also got a strong sense of ethics and want their shoes to have a positive impact on the environment.

This eco-friendly spirit extends throughout the entire life of Simple shoes: they use 50% consumer recycled rubber in many of their styles and have a line of footwear called Green Toe, a collection of shoes made from renewable natural products like jute, hemp, cork and straw.

Sold at: REI TACOMA

3825 S. Steele St., Tacoma, WA 98409
(253) 671-1938
www.simpleshoes.com

Waste Free Gift Catalog

SHOW YOU CARE

HOME PAGE

FURNITURE, HOME INTERIOR AND DECORATING

Using environmentally friendly, "green" products is a growing practice in the home building, remodeling, decorating and furnishing industries. These recycled products may be the perfect way to give green.



Tiles & Much More

100% recycled glass, Bedrock's Blazestone tiles can be used inside and out on floors, counters and fountains (available in a variety of colors). Visit Bedrock's Stoneyard where you'll find overruns, prototypes, seconds and unique items made by their artisans. You'll also find reclaimed materials such as marble, granite and flagstone. Dinnerware, salmon platters, coasters, candle bases and recycled art glass (starlight drops, lovestones and windchimes) are also available.

BEDROCK INDUSTRIES

1401 W. Garfield, Seattle, WA 98119
(206) 283-7625 or
1-877-283-7625 (toll free)
www.bedrockindustries.com

Tiles

Oceanside Glass Tiles produces four styles of tile all handcast from 85% post-consumer recycled glass. They are semi-transparent, have an

iridescent surface, and are available in a range of colors. Tessera is available in 29 colors and three sizes. Casa California includes larger-format tiles with a full line of decoratives. Minerali is a specialty tile with wide color variation and a textured surface. Haiku features opal glass with Asian motifs.



OCEANSIDE GLASS TILE CO.

www.glasstile.com

Available through:

ECOHAUS

(206) 315-1974 or (877) 432-6428
www.ecohaus.com

Countertops / Decorative Surfaces

EnviroGLAS uses multi-colored glass chips from discarded bottles, mirrors, auto and plate windows. EnviroSLAB uses up to 18 types of glass, porcelain (recycled toilets, tubs and sinks), and other recycled aggregates.

ENVIROGLAS

(888) 523-7894
www.enviroglasproducts.com

Vetrazzo® takes discarded glass like decommissioned traffic lights, windshields, used bottles and plate glass windows. Smooth, four times tougher than



traditional concrete and studded with translucent bits in a host of colors.

VETRAZZO®

www.vetrazzo.com

Available at:

PENTAL GRANITE & MARBLE (Fife)

(253) 344-5150

www.pentalonline.com



Musical Instrument Lighting

Symphonic Lighting handcrafts functional and artistically designed lighting fixtures from retired and worn out musical instruments. Whether it's the class of brass or the wild look of an electric guitar, Symphonic Lighting has a lighting fixture that is in harmony with your needs. These lamps are available in floor and table models and can be designed using your retired or worn out musical instrument or theirs.

SYMPHONIC LIGHTING

(920) 474-7354

www.symphoniclighting.com

FURNITURE, HOME INTERIOR AND DECORATING

Furniture

Urban Hardwoods was founded in 2002 to reclaim urban trees and to make enduring furniture that honors the natural beauty of the wood. It grew naturally out of the vision of Jim Newsom, who began salvaging beached logs with his tugboat from the shores of Elliot Bay in the late 1990s. In the process of acquiring and using urban wood he discovered the incredible beauty of local trees. Combining these materials with fresh designs and exceptional craftsmanship is a synergistic endeavor with delightful results.

URBAN HARDWOODS
4755 C Colorado Ave. S.
Seattle, WA 98134
(206) 766-8199 or (888) 766-8199
www.urbanhardwoods.com



Furniture

What if? *IF Green* is contemporary, original, affordable furniture, made only from sustainable products. Its furniture offers simple lines and nothing unnecessary. Just strength and timeless beauty. Making sustainability an achievable goal for everyone's home, supporting environmentally sound practices throughout the community and building gorgeous furniture is the *IF Green* philosophy. The company uses only FSC certified products, reclaimed wood or urban harvested wood along with earth-friendly glues, stains and finishes.

IF GREEN
(503) 771-5730
www.ifgreen.com

Wool and Cotton Rugs

Custom Handweaving by Susan Snover is celebrating 33 years of producing rag rugs and other beautiful and functional handwoven household items. Designs offer simple, Swedish-inspired stripes. Products include rag rugs, hand towels for kitchen and bath, placemats, sofa throws and baby blankets. Much of the material is from fabric samples discarded by interior design showrooms and scraps from Pendleton Mills in Portland. Susan will do a custom project to meet your unique requirements, allowing you to choose colors and even supply some fabric.

CUSTOM HANDWEAVING

(206) 524-9058
www.customhandweaving.com



Waste Free Gift Catalog

SHOW YOU CARE

HOME PAGE

LANDSCAPING AND GARDENING

What better way to give green than through gifts that nurture gardening and outdoors enjoyment.

Compost–PREP

PREP Compost (Pierce County Recycled Earth Products) is made from yard trimmings recycled through Pierce County's collection program. PREP compost is preferred by golf course supervisors and horticulturists for use in specialty soil blends for turf and gardens. Compost also works wonderfully as an annual mulch to make garden beds beautiful and the soil fertile at the same time. Contact the following for information on wholesale and retail purchases:

HIDDEN VALLEY COMPOST FACILITY

(253) 847-7555
Open 7 days a week
8 a.m.–5:45 p.m.
17925 Meridian St. E, Puyallup

LAND RECOVERY'S

SALES ROAD FACILITY

(253) 589-6993
Open 7 days a week
7 a.m.–5 p.m.
10308 Sales Rd., Tacoma
At Hwy 512 and Steele St.
Retail only at this location

PURDY TOPSOIL & GRAVEL

(253) 857-5850
Located by Purdy/Key Center exit
off Hwy 16

RANDLES SAND & GRAVEL

(253) 531-6800
192nd and Canyon Rd
Volume sales and delivery

UNIVERSITY PLACE REFUSE

(253) 564-3212
2815 Rochester, University Place

VERN'S ORGANIC TOPSOIL

1-888-841-8043
22622 Bond Road NE, Poulsbo, WA

SoundGRO

SoundGRO is a 100% naturally organic fertilizer produced at the Chambers Creek Regional Wastewater Treatment Plant. SoundGRO is given the highest rating by the Environmental Protection Agency (EPA) as a Class A 'Exceptional Quality' biosolid based fertilizer. SoundGRO is a slow-release fertilizer made to be environmentally friendly while providing beneficial nutrients to plants and grasses. SoundGRO can be purchased at Chambers Creek Regional Wastewater Treatment Plant, 10311 Chambers Creek Road W., University Place. Hours are 7:30 a.m.–2:30 p.m., Monday through Friday and closed daily from 11:30 a.m.–12:00 noon.

SOUNDGRO

(253) 798-3099
www.soundgro.com



Food Waste Composting—Worm Bin

Worm composting is a great way to turn kitchen scraps, into high quality, nutrient-rich material for your lawn and garden. The Worm Factory is made in the USA with recycled plastics.

THE WORM FACTORY

3324 E. Smith Road
Bellingham, WA 98226
(360) 937-1405
www.cascadewormbin.com



LANDSCAPING AND GARDENING

Compost Bin

The Tilterator is a new kind of composter. Its patented design makes turning a big compost pile easy, fast and fun. It requires less strain and stress on the back while aerating the compost pile, especially for large loads. The end result? Efficient, effective and rewarding composting! The bins are made of 100%



recycled plastic and are manufactured regionally.

TILTERATOR

(206) 240-2047 or
1-877-404-TILT (toll free)
www.tilterator.com

TIP: *There are a variety of compost bins on the market. Check with your local home center or hardware stores for availability. "How-to-build your own compost bin" directions also are available at www.piercecountywa.org/composting.*

Landscape Rock Mix

Your pathways will become magical and your ponds will glow from within with Bedrock's tumbled glass. Available in a variety of colors, shapes and sizes.



BEDROCK INDUSTRIES

1401 W. Garfield, Seattle, WA 98119
(206) 283-7625 or 1-877-283-7625
www.bedrockindustries.com

Rain Barrel

Made from a recycled 50- or 60-gallon food barrel, this rain barrel has a brass spigot on the bottom.



It will deliver soft, untreated rainwater to your lawn and plants with a hose or simply a watering can. One inch of rain on a 1,000-square-foot roof yields 623 gallons of water.

DOWN TO EARTH SOLUTIONS

Dan Borba
937 1/2 S. Sheridan Ave.
Tacoma, WA 98405
(253) 272-8173
www.naturallrainwater.com

Greeting Cards

You can grow these cards! Wildflower seeds are embedded in the paper of these handmade greeting cards. Plant the card and the paper will recycle naturally into the soil as the seedlings grow. 100% tree free using soy based inks with recycled paper envelopes. Choose from 12 whimsical designs including Happy Birthday, Celebrate, Thinking of You and others. Keep it moist and watch it sprout!

GREENFIELD PAPER

www.greenfieldpaper.com
1-888-402-9979 (toll free)

Raised Bed Garden Kit

The tongue and groove boards are pre-cut and pre-notched for easy assembly. Maintenance-free, non-toxic, guaranteed for 50 years. Made from 100% recycled HDPE plastic.



DURABLE PLASTIC DESIGN

17725 NE 65th Street, A-100
Redmond, WA 98052
(425) 883-2570
www.durableplasticdesign.com

Park Bench & Adirondack Chairs

Made from 100% recycled HDPE plastic (mainly milk jugs, water and juice bottles). Never needs painting, stain or sealer. Will not crack, splinter or chip. Impervious to insects, mold, mildew and saltwater. Available in various colors.

DURABLE PLASTIC DESIGN

17725 NE 65th Street, A-100
Redmond, WA 98052
(425) 883-2570
www.durableplasticdesign.com



Waste Free Gift Catalog

SHOW YOU CARE

HOME PAGE

ORGANIC

Organic farming practices are designed to benefit the environment by reducing pollution and conserving water and soil. Most organic products cost more than conventional products. Higher prices are due to more-expensive farming practices, tighter government regulations and lower crop yields. Because organic farmers don't use herbicides or pesticides, many management tools that control weeds and pests are labor intensive. For example, organic growers may hand weed vegetables to control weeds, and you may end up paying more for these vegetables.



Organic Cotton Clothing

Maggie's socks, camisoles, nightshirts, sheets and fabrics are made with certified organic cotton and

low-impact dyes. You can shop Maggie's complete line through the online store.

MAGGIE'S ORGANICS / CLEAN CLOTHES INC.

1-800-609-8593
www.organicclothes.com

Organic Clothing

Since 1996 Patagonia has used only 100% organic cotton in its cotton clothing. From cardigans to caps, Patagonia offers more than 120 organic cotton products.

PATAGONIA

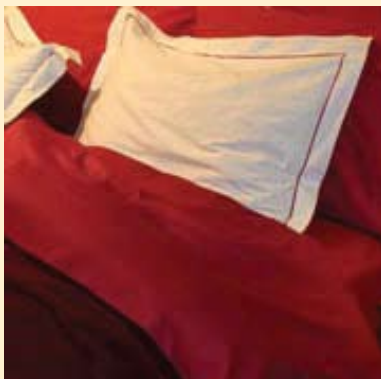
www.patagonia.com
or visit: Patagonia Seattle
2100 First Ave., Seattle, WA 98121
(206) 622-9700 or 1-800-638-6464

Community Supported Agriculture

A gift of organic food. Don't have the space or time to grow your own vegetables? Support your local organic farmer with a Community Supported Agriculture (CSA) subscription or "share." You or your gift recipient will enjoy a variety of fresh, organic produce and support local small farms. Contact the farms for details.

TAKE ROOT FARM

24416 Buckley-Tapps Hwy. E.
Buckley, WA
(243) 891-FARM
www.takerootfarm.com



Organic Cotton Bedding

Coyuchi's luxurious-feeling bedding is made without any agricultural chemicals or pesticides. Coyuchi offers a full line of organic cotton sheets, pillowcases, duvet covers, pillow shams, baby bedding, bath rugs, throws, blankets and robes.

COYUCHI

1-888-418-8847 (toll free)
www.coyuchiorganic.com

TERRY'S BERRIES

4520 River Road, Tacoma, WA 98443
(253) 922-1604

www.terrysberries.com

Distributes in Pierce County or you can pick up your box at the farm.

ZESTFUL GARDENS

5102 40th St. E., Tacoma, WA 98443
(253) 232-0811

www.zestfulgardens.org

Distributes in Tacoma, Puyallup, Gig Harbor and Steilacoom

What is C.S.A.? Community Supported Agriculture

is a new approach to growing, selling, buying and consuming food. In many ways, CSA harkens back to an earlier time when people knew where their food came from, ate in harmony with their local seasons and enjoyed a nutritionally balanced diet of basic, natural foods. CSA farms are supported by members who buy, share and receive fresh produce throughout the season. The direct connection between farmer and consumer cuts out the middlemen, long-distance shipping, storage, handling and consequent loss of nutrients. Members are assured the freshest possible fruits, vegetables and eggs—all of which are grown in a wholesome environment. They know where and how their food is grown and who is growing it!

Waste Free Gift Catalog

SHOW YOU CARE

HOME PAGE

SOLAR

Solar home products are environmentally friendly. There are many other benefits of using and giving solar-powered products. When you use solar home items, your electricity bills will go down. Why pay outrageous prices for electricity when you can create your own electricity at home? Another, less-thought-of benefit is the lack of wiring makes a solar gift easier to install and more attractive. Solar garden lights usually have darkness sensors, so you never even have to worry about turning them on or off. It's about as simple as pulling your solar lights out of the box, place them where you want them, and then never worry about them again.

Skylights

These energy-efficient skylights will brighten your home naturally. Their compact size significantly reduces heat loss or gain and minimizes the need for artificial electric lighting.



SOLA-TUBE SKYLIGHTS

Available through:
NORTHWEST NATURAL LIGHTING, INC.
19019 36th Ave. W., Suite E
Lynnwood, WA 98036
1-888-246-6006
www.nwnaturallighting.com

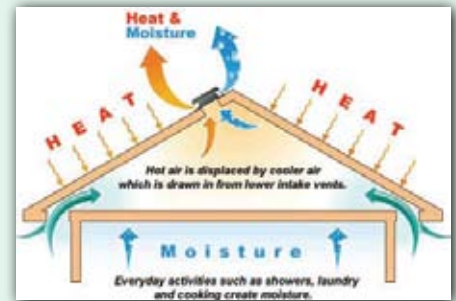
Solar Powered Attic Fan

The Solar Star operates completely on natural energy from sunlight (even on bright overcast days) that is continuously collected and converted into electrical power by a state-of-the-art solar panel. There's nothing to plug in. Nothing to wire.

Available through:
NORTHWEST NATURAL LIGHTING, INC.
19019 36th Ave. W., Suite E
Lynnwood, WA 98036
1-888-246-6006 (toll free)
www.nwnaturallighting.com



SOLAR ENERGY



Other Solar-Powered Gifts

There is a huge variety of solar powered products on the market that would make great gifts. They are easily found in local stores and online. Examples include a solar-powered address light and garden solar lights.



Waste Free Gift Catalog

SHOW YOU CARE

HOME PAGE

MISCELLANEOUS

Do you love your bicycle?

Resource

Revival is a Portland-based company that recycles parts of old bicycles and automobiles into functional



and decorative products ranging from tables and picture frames to earrings and clocks. Each year, Resource Revival recycles thousands of pounds of used bicycle, automotive and building parts.

RESOURCE REVIVAL

1-800-866-8823

www.resourcerevival.com



Glass Dinnerware & Candle Stands

The glass dinnerware (plates, bowls, glasses and candle stands) is hand-crafted, hand poured and pressed individually. Dishwasher safe, no lead content, not recommended for microwave. Made from post-consumer recycled glass.

FIRE & LIGHT

1-800-844-2223

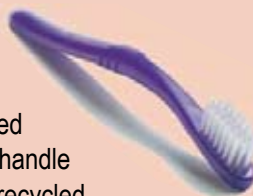
www.fireandlight.com

Available through:
Museum of Glass
1801 E. Dock St., Tacoma
(253) 396-1768

Watermark, 1115 A St., Tacoma
(253) 383-2041

Toothbrush

The Preserve is a high-quality, dentist-engineered toothbrush. The handle is made of 85% recycled plastics (the bristles are made of 100% premium virgin nylon) and the brush packaging is a neat, reusable holder that helps keep your Preserve toothbrush clean and portable. Consumers are supplied with a postage-paid mailer to send their used brush to Recycline. Used brushes are turned into a feed material to make recycled plastic lumber products.



Two lines of recycled plastic dishware are also available.

RECYCLINE, INC.

1-888-354-7296 (toll free)

www.recycline.com

Cat & Dog Products

From beds to bowls, Big Shrimpy creates products that are functional for both cats and dogs. Products are stylish enough for any living space, completely washable

and planet-friendly. In 2005, Big Shrimpy recycled 61,000 pounds of fleece scraps from North American clothing manufacturers and 97% of product sales revenue came from products using at least 50% recycled materials.

BIG SHRIMPY

(206) 297-7918

www.bigshrimpy.com

Silverware?

Reuse can be fun! What looks like silverware but can no longer be used for eating? Spoonman creations. With just the power of his mind (OK, and a few tools, too) he creates wind chimes, masks, jewelry, silly stuff and other gifts.



SPOONMAN CREATIONS

1-800-656-3458

www.spoonman.com

Environmentally Sound Variety Stores

In the last few years, a new kind of store has cropped up in many places—variety stores that feature environmentally sound products. Patronize these stores and help the environment by:

- Closing the recycling loop by buying recycled products.
- Supporting earth-friendly manufacturing approaches.
- Conserving resources today for a better tomorrow.

MISCELLANEOUS

Porous Paving System

Grasspave porous paving allows you to park, drive, walk, ride or lounge on a beautiful grass surface. It performs the functions of asphalt or concrete pavement, but with the aesthetics of a lawn—all while enhancing the environment. The products process storm water naturally, and prevent erosion and soil migration. The Grasspave2, Rainstore3, Slopetame2, Draincore2 and Black Gravelpave2 are usually 100% recycled content.

INVISIBLE STRUCTURES INC.

1-800-233-1510

www.invisiblestructures.com



Snowboards

Venture Snowboards uses only FSC sustainably grown and harvested hardwoods for its signature book-matched cores and relies on fabric top sheets (including organic cotton and hemp) to reduce its use of plastics. Venture also recycles or reuses most of the waste generated by the production process. The company simplifies its



production process by doing everything in-house. Each board is crafted from scratch without prefabricated components. This allows complete freedom of design and total quality control. The end result is a snowboard that's elegant, functional and built to last.

VENTURE SNOWBOARDS

(970) 387-5078

www.venturesnowboards.com

Backpacks / Daypacks

Solar built into your bag? These rugged bags are outfitted with a super flexible solar panel that can charge your handheld devices everywhere you go. Any of your smaller electronic devices can be charged with your ReWare Juice Bag – mobile phones, satellite phones, MP3 players, PDAs, game players, GPSs, digital cameras, you name it! Simple to use.

Juice Bags integrate a thin-film solar panel of 52 micro solar cells. The panel is light, flexible and extremely powerful. The removable panel is waterproof, military tested and creates no heat or

sound. ES Series Juice Bags are made from reclaimed soda bottles, which are shredded and woven into a super-durable fabric that feels natural to the touch. Juice Bags come with a built-in car lighter adapter (CLA) socket. Just plug in the CLA approved for use with your phone, PDA, MP3 player or other 12-volt device. The moment sunlight falls on the Juice Bag's solar panel, the bag generates electricity. It is that easy!

REWARE

www.rewarestore.com

