

Culture and Recreation

Budgets for departments whose functions and activities provide or support culture and recreational services are included in this section. The budgets for the Golf Courses, Paths and Trails Fund, Park Impact Fee Fund, and Parks Sales Tax Fund are managed by the Parks and Recreation Services department. Other budgets contained in this section are the Pierce County Fair, Pierce County Arts Commission, Cooperative Extension, and the Tourism, Promotion, and Facilities Fund.

Major Accomplishments in 2002

Parks & Recreation hosted an ice show at Sprinker Recreation Center featuring Rosalynn Summers with 4,000 spectators. Youth Lacrosse was introduced through free public clinics. Fall softball registration increased by fifty percent. A Recreation Supervisor was hired for the Peninsula area to develop a comprehensive recreation program.

Roads were paved at Frontier Park and the Grounds Maintenance shop yard. Re-roofed two picnic shelters at Spanaway Park, two restrooms at Frontier Park and four historical barns at Fort Steilacoom Park. The roof and deck were replaced at the Spanaway boathouse.

The Wellness Program offered flu and pneumonia shots; blood drives; osteoporosis, cholesterol and glucose screenings; and ergonomic workstation assessments for County employees.

Path and Trails completed a survey for the Foothills Trail from Cascade Junction to Carbonado. The 3.2 mile Cushman Powerline Trail was constructed in the Gig Harbor area along the Tacoma Light corridor.

New fencing and lights were installed at the Lake Spanaway Golf Course driving range as well as sand bunkers, irrigation and mounds on #9 fairway. New carpeting, furnishings and paint were installed in the clubhouse at Fort Steilacoom Golf Course and the #2 tee was relocated.

The Arts and Cultural Services Division continued to expand its services to the community in accordance with the strategic plan. Grants totaling over \$70,000 were issued and administered by staff and included services to low-income, cultural, educational, and arts communities. The first countywide Public Art Master Plan detailing protocol and activities was completed. This represents the first such program in the history of Pierce County's 1% for Art program. New funding sources and partnerships were realized with national, state and local entities centering on the arts and culture as influential to all facets of society. The community arts and education development continued to focus on outlying areas of the county. Under the Arts Education initiative, over eight months of continuous Artist in Residence programming was provided to the County's fifteen school districts in preparation for statewide educational assessments in the arts. Staff assisted community organizations on a number of issues including obtaining non-profit status, developing arts policy and legislation, tourism, and strengthening education programs. In administrative partnership with Council District 4, Ethnic Fest celebrated the county's cultural diversity with over 55,000 participants.

Section Contents	
Arts and Cultural Services	199
Cooperative Extension	201
Golf Courses	205
Park Impact Fee Fund.....	209
Parks and Recreation Services	211
Parks Sales Tax Fund.....	217
Paths and Trails Fund.....	219
Peninsula Recreation Program.....	221
Pierce County Fair	223
Second REET Fund.....	225
Tourism Promotion & Capital Facilities Fund.....	227

In the Tourism, Promotion, & Facilities program a lawsuit was filed against the County in 2002 challenging the validity of the 1998 Ordinance authorizing imposition of an additional 3 percent excise tax on lodging facilities larger than 25 units. The suit may come to trial in 2003 but it was decided that setting-aside a pool of funds sufficient to offset any potential settlement would be prudent. Community Development successfully negotiated reductions in previously approved 2002 activities, which, along with unallocated funds, equaled the amount of 3 percent taxes collected since 1999. Any funds not needed for settlement of the lawsuit will be utilized in future tourism promotion activities.

Culture and Recreation

In Cooperative Extension the new Low-Impact Development chapter for the Pierce County Stormwater Manual is under final review. Data generated from the project will support guidelines for implementing LID practices in western Washington. Planning for the new "Advanced 4-H Leader" Program took nine months of hard work by staff and stakeholders. Future workshops are planned for December 2002, January, February and March 2003. The Learning Center provided 125 informational sessions on the Distance Degree Program (DDP) through community colleges, work sites, and community groups resulting in 73 new DDP students. The Square Foot Nutrition Project and the Growing with Plants program taught garden-enhanced nutrition lessons to 3,004 youth in schools across Pierce County during the FY 2002. A total of 385 Master Gardeners staffed 39 public clinics, with outreach to over 160,000 Pierce County citizens on research-based environmentally sound information, emphasizing water conservation and proper pesticide choices were staffed by 385 Master Gardeners. The Extension Food and Nutrition education Program (EFNEP) that teaches limited income families and youth knowledge and skills in basic nutrition and food planning/preparation had a total of 1,132 adults with 4,364 family members. After a year of regular meetings with local Dome District businesses and local government officials, the farmers market at the Tacoma/Pierce County Transit Center project was put on hold.

DEPARTMENT BUDGETS

Department Name	2002 Budget	2003 Budget	Absolute Change	Percent Change
Arts and Cultural Services	\$ 335,510	\$ 292,240	\$ (43,270)	(12.9) %
Cooperative Extension	566,780	578,610	11,830	2.1
Golf Courses	1,229,950	1,079,310	(150,640)	(12.2)
Park Impact Fee Fund	3,545,000	2,977,520	(567,480)	(16.0)
Parks and Recreation Services	6,035,350	6,130,800	95,450	1.6
Parks Sales Tax	22,350,000	2,175,000	(20,175,000)	(90.3)
Paths and Trails Fund	1,969,290	2,143,750	174,460	8.9
Peninsula Recreation Program	—	200,000	200,000	—
Pierce County Fair	169,400	181,230	11,830	7.0
Second Reet Fund	4,050,000	8,956,740	4,906,740	121.2
Tourism, Promotion, Facilities	400,000	433,000	33,000	8.2
Total Cultural & Recreation	\$ 40,651,280	\$ 25,148,200	\$ (15,503,080)	(38.1) %

Several new revenue sources for park improvements and operations have been authorized by voters or legislative bodies over the past few years. The following table presents a consolidated view of the 2003 budgeted activities for parks which are funded with these non-general fund revenue sources.

PARKS SPECIAL REVENUE & CAPITAL IMPROVEMENTS EXPENDITURE & FUNDING SUMMARY

Funding Sources

Activity/Project	Prog	Paths/Trails	Parks Sales Tax	Parks Sales Tax Bond Issue	Impact Fees	Parks Construction Fund	Second REET Parks 25%	Totals
GMA Capital Improvements								
Trails								
ESA Bridges	4915	\$ 66,500	\$ —	\$ —	\$ —	\$ —	\$ —	\$ 66,500
Foothills Trail-Buckley to South Prairie	4911	62,060	—	—	242,000	—	—	304,060
Foothills Trails-Cascade Junction to Carbonado	4924	75,000	—	—	14,000	—	—	89,000
Foothills Trail-McMillin to Meeker	4925	20,000	—	2,644,350	—	—	—	2,664,350
Nathan Chapman Memorial Trail	4916	—	—	—	—	—	300,000	300,000
Orting to South Prairie	4910	729,000	—	—	765,000	—	—	1,494,000
Parks & Facilities								
Ashford/Elbe/Eatonville Area	4967	—	—	—	50,000	—	—	50,000
Eatonville Skate Park	4950	—	—	—	—	—	150,000	150,000
Fort Steilacoom Park Fields	4972	—	300,000	—	—	—	300,000	600,000
Frontier Park Improvements	4974	—	—	—	—	25,000	—	25,000
Graham Skate Park	4951	—	—	—	—	—	150,000	150,000
Lake Tapps Habitat Water Access	4971	—	—	—	—	494,220	—	494,220
LCC Lighting Renovation	4905	—	—	—	—	65,000	—	65,000
Narrows Park	4960	—	—	—	—	340,000	—	340,000
Peninsula School District Fields	4970	—	—	—	910,000	—	—	910,000
Randall Boat Launch	4982	—	—	—	—	75,000	—	75,000
So Hill Rogers HS Zeiger Fields	4969	—	—	6,850,000	800,000	—	—	7,650,000
Stewart Heights Pool	4953	—	—	—	—	—	300,000	300,000
South Hill Park Fields	4968	—	—	—	—	90,000	—	90,000
Sprinker Facility Additions	4977	—	—	5,500,000	195,000	—	—	5,695,000
Volunteer Park Improvments	4952	—	—	—	—	—	150,000	150,000
Total GMA Capital Improvements		952,560	300,000	14,994,350	2,976,000	1,089,220	1,350,000	21,662,130
Other Activities								
Debt Issuance Costs		—	300,000	—	—	—	—	300,000
Designated for Future Projects/Debt Service		—	1,222,640	—	—	—	—	1,222,640
General Park Facility Repairs & Improvements		—	100,000	—	—	—	—	100,000
Peninsula Parks Recreation Programs		—	150,000	—	—	—	—	150,000
Regional Planning & Admin Support		109,410	102,360	—	1,520	29,090	105,000	347,380
Trail Maintenance		60,780	—	—	—	—	—	60,780
Total		\$ 1,122,750	\$ 2,175,000	\$ 14,994,350	\$ 2,977,520	\$ 1,118,310	\$ 1,455,000	\$ 23,842,930

Construction Fund and the Parks portion (25%) of the 2nd REET Fund. This chart presents the proposed projects with the related funding sources, and ~~deletes the "double counting" necessary when funding sources must be transfered~~ from one fund to another in order to combine all project expenses in a single fund due to accounting requirements.

Culture and Recreation

Arts and Cultural Services

Special Revenue Fund

The mission of Arts & Cultural Services is to deliver programs and services that stimulate participation and growth in the arts throughout Pierce County.

Departmental Summary:

Arts & Cultural Services creates and implements programs that provide arts services to County residents. Specific goals are to provide increased access for student and adult residents to the performing, visual, and literary arts; provide economic opportunities for resident artists; encourage the professional development (artistic and managerial) of resident artists and arts organizations; deliver arts services to residents in areas of the County where such services are limited or unavailable; recognize and celebrate the cultural pluralism which exists in Pierce County; develop the County's arts industry as a viable economic development tool; and encourage increased public and private sector support of cultural activities; and assists the Executive and the Council in the development of cultural policy.

Budget Highlights:

The 2003 Arts & Cultural Services budget is 12.9% below the 2002 budget because last year's budget utilized one time monies for community grant programs, which will not be repeated in 2003. The 2003 budget does continue to support community festivals and projects, including Ethnic Fest, Artists in Residence, and Arts Education Programs.

Performance Measures

- 1) Capitalize on arts education programming through the retention of current service levels, and increase services to under-served communities by 15%. (Goal D)

FUNDING SOURCES

	2000 Actual	2001 Actual	2002 Budget	2003 Budget	Absolute Change	Percent Change
Est Use of Begin Fund Balance	\$ —	\$ —	\$ 99,000	\$ 35,000	\$ (64,000)	(64.6) %
Intergovernmental Revenue	23,000	10,250	21,000	28,000	7,000	33.3
Miscellaneous Revenue	53,696	30,950	33,150	46,000	12,850	38.8
Other Financing Sources	290,500	238,000	182,360	183,240	880	0.5
Total	\$ 367,196	\$ 279,200	\$ 335,510	\$ 292,240	\$ (43,270)	(12.9) %

PROGRAM EXPENDITURES

	2002 FTE	2003 FTE	2002 Budget	2003 Budget	Absolute Change	Percent Change
Administration	1.64	1.54	\$ 148,600	\$ 130,440	\$ (18,160)	(12.2) %
Festivals and Productions	—	—	144,910	117,800	(27,110)	(18.7)
Arts Education	—	—	42,000	44,000	2,000	4.8
Total	1.64	1.54	\$ 335,510	\$ 292,240	\$ (43,270)	(12.9) %

Arts and Cultural Services

STAFFING SUMMARY

	1998 FTE	1999 FTE	2000 FTE	2001 FTE	2002 FTE	2003 FTE
Dir – Community Services	0.05	0.05	0.05	0.05	0.05	0.05
Arts Manager	1.00	1.00	1.00	1.00	0.85	0.75
Grant Accountant	0.05	0.05	0.05	0.05	0.05	0.05
Administrative Aide	—	—	0.69	0.69	0.69	0.69
Arts Program Coordinator	1.00	1.00	—	—	—	—
Arts Program Specialist	1.00	—	—	—	—	—
Total	3.10	2.10	1.79	1.79	1.64	1.54

WORKLOAD SERVICE DATA

	Unit of Measure	1998 Actual	1999 Actual	2000 Actual	2001 Actual	2002 Estimate	2003 Estimate
Volunteers trained	Individuals	80	75	80	35	89	95
Grant applications submitted	Grants	2	6	4	4	3	5
Teacher In-Service Training	Participant	60	100	375	100	400	250
Arts Are Education Program	Services	—	50	—	25	12	10
Artist in Residence Program	Residencies	17	40	15	8	20	20
First Night/Ethnic Fest	Attendance	45,000	55,000	55,000	65,000	60,000	65,000
Community Festivals	Events	25	35	10	9	7	9
Percent for Art	Projects	1	2	2	1	2	1
Conferences (two)	Attendance	—	450	—	450	450	450
Technical Assistance	Workshops	2	1	2	3	3	3

Cooperative Extension

General Fund

The mission of Pierce County Cooperative Extension is to use research-based information to assist people in developing leadership skills and to improve their economic status and quality of life.

Departmental Summary:

Cooperative Extension focuses on the priority needs of Pierce County as determined by its Citizens Advisory Commission, community needs assessments by faculty and staff, and Pierce County government. Programs include Agriculture and Natural Resources, Family Living, Horticulture and 4-H Youth Development. Programs focus on self-esteem, life skills and job readiness skills of “at risk” youth; food safety and parenting skills; nutrition of pregnant teens, low-income families and daycare children; reducing water pollution from homes, gardens and farms; developing leadership skills in individuals and communities; and promoting alternative business opportunities. Proactive prevention strategies, rather than intervention techniques, are used to reduce priority social problems facing Pierce County.

Cooperative Extension trains and manages a corp of nearly 2,500 volunteers and collaborates with other county departments and community agencies in implementation of prevention and education programs. Programs are delivered through classes, workshops, special events, clinics, demonstrations, publications, Internet, Learning Centers and over the phone. The “cooperative” in Cooperative Extension relates to the unique funding arrangement and educational network between the County, Washington State University and the federal government.

Budget Highlights:

The Cooperative Extension budget for 2003 is 2.1% above the current year’s budget. This budget simply provides for the existing staff and services, adjusted for inflationary increases.

Performance Measures

- 1) Increase volunteer master gardeners by 10% to 400 and utilize them to provide the latest research based information to foster environmental stewardship and state of the art horticultural practices to 200,000 county residents (an increase of 12%). (Goal I)

FUNDING SOURCES						
	2000 Actual	2001 Actual	2002 Budget	2003 Budget	Absolute Change	Percent Change
General Fund Support	\$ 495,779	\$ 510,372	\$ 553,280	\$ 563,120	\$ 9,840	1.8 %
Fees/Charges	12,169	12,829	13,500	15,490	1,990	14.7
Total	\$ 507,948	\$ 523,201	\$ 566,780	\$ 578,610	\$ 11,830	2.1 %

Cooperative Extension

PROGRAM EXPENDITURES

	2002 FTE	2003 FTE	2002 Budget	2003 Budget	Absolute Change	Percent Change
Administration	1.60	1.60	\$ 174,325	\$ 198,525	\$ 24,200	13.9 %
4-H Youth	1.00	1.00	136,515	132,725	(3,790)	(2.8)
Resource Center	—	—	800	800	—	—
Agriculture/Master Gardener	—	—	93,835	88,765	(5,070)	(5.4)
Family Living	1.00	1.00	151,305	147,795	(3,510)	(2.3)
Publications Program	—	—	10,000	10,000	—	—
Total	3.60	3.60	\$ 566,780	\$ 578,610	\$ 11,830	2.1 %

STAFFING SUMMARY

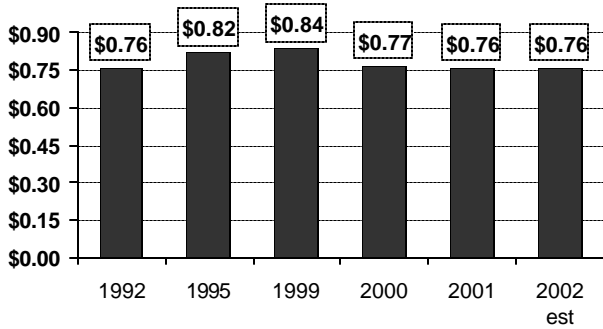
	1998 FTE	1999 FTE	2000 FTE	2001 FTE	2002 FTE	2003 FTE
Admin Program Mgr	1.00	1.00	1.00	1.00	1.00	1.00
Administrative Aide	1.60	1.60	1.60	1.60	1.60	1.60
Office Assistant	1.00	1.00	1.00	1.00	1.00	1.00
Total	3.60	3.60	3.60	3.60	3.60	3.60

WORKLOAD SERVICE DATA

	Unit of Measure	1998 Actual	1999 Actual	2000 Actual	2001 Actual	2002 Estimate	2003 Estimate
Percent of County support	Percent	21	22	24	24	24	23
Trained volunteers	Individuals	1,264	1,193	1,452	1,534	1,355	1,400
In-kind services/volunteer hrs	Dollars	3,203,124	2,706,891	2,253,298	1,596,394	2,908,050	1,931,160
4-H members	Individuals	10,105	13,185	21,568	11,639	16,000	10,000
Extension Family/Nutrition Ed	Individuals	768	950	1,001	500	900	1,000
EFNEP volunteers	Individuals	83	205	293	78	100	125
Seminars, workshops, classes	Events	8,085	9,457	7,559	7,985	9,327	8,577
Radio/television/news columns	Number	290	209	226	111	169	97
Incoming calls/walk-ins	Individuals	153,159	155,941	140,339	68,624	155,675	61,425
Educational bulletins distributed	Number	41,882	17,230	37,609	44,607	47,010	66,905
Agri/Nat Resources/Water Qual	Participant	91,495	94,672	101,838	157,700	114,800	201,200
Family Living	Participant	33,500	30,142	38,700	70,172	67,500	73,300
Youth, not enrolled in 4-H	Participant	4,697	4,248	4,612	4,681	4,800	7,885
At-risk individuals assisted	Number	13,475	15,212	21,102	8,618	19,700	12,485
Collaborating agencies	Number	468	295	383	346	401	356

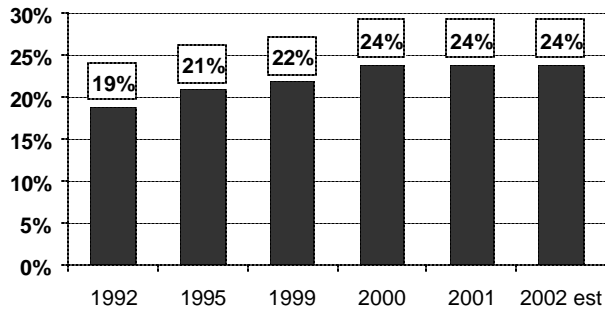
BUDGET RATIOS

Expenditures per County Resident



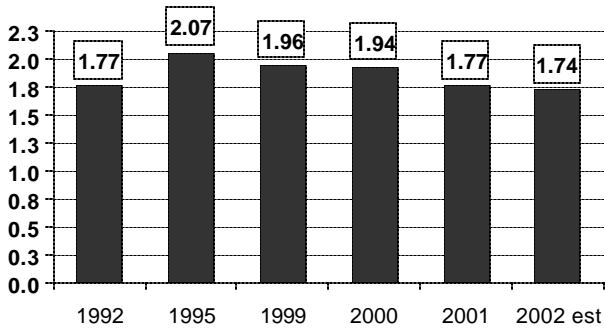
❖ From 1992 to 2002 expenditures (Pierce County funds only) per County resident remained constant after adjusting for inflation.

Percent of County Support



❖ From 1992 to 2002 County support as a percentage of the Cooperative Extension's total budget increased 26%.

Employees per 100,000 County Residents



❖ From 1992 to 2002 the number of Cooperative Extension employees (all funding sources) per 100,000 County residents decreased 2%.

Cooperative Extension

Golf Courses

Enterprise Fund

The mission of the Golf Program is to provide quality golf services and facilities through sound planning, effective-deployment of human resources, equipment and materials, and careful and efficient financial management.

Departmental Summary:

Parks and Recreation Services operates two golf courses which are budgeted and accounted for in a separate self-supporting enterprise fund. Course maintenance and improvement costs are paid for out of the golf course fund. The pro shop operation of both golf courses is contracted to a concessionaire, while maintenance and improvements are done by Pierce County.

Lake Spanaway Golf Course is a 160 acre, 18 hole championship play course, located in south Pierce County. The course was constructed twenty-seven years ago with most of the majestic Douglas Fir trees left in place. Lake Spanaway Golf Course contains a pro shop, restaurant and full sized covered driving range.

Fort Steilacoom Golf Course is a 105 acre, 9 hole golf course of medium length located in the Lakewood area north of Western State Hospital. This golf course caters to the intermediate golfer.

Budget Highlights:

The 2003 Golf Courses Fund budget total is 12% below the 2002 budget, due to a reduction in capital improvements. However, the new budget still includes many facility enhancements: a Golf Learning Center, equipment replacement purchases, and a maintenance building addition.

A fund balance allocation of \$155,000 will be necessary to support this recommended budget, and a greens fee increase of 3% is also being proposed.

Performance Measures

- 1) Build an all weather learning center at Lake Spanaway Golf Course with video capability and six stalls for golf instruction and practice. (Goal D)

FUNDING SOURCES

	2000 Actual	2001 Actual	2002 Budget	2003 Budget	Absolute Change	Percent Change
Est Use Of Begin Fund Balance	\$ —	\$ —	\$ 284,150	\$ 154,810	\$ (129,340)	(45.5) %
Intergovernmental Revenue	741	—	—	—	—	—
Charges For Services	874,391	868,022	927,000	908,000	(19,000)	(2.0)
Miscellaneous Revenue	17,124	14,528	18,800	16,500	(2,300)	(12.2)
Other Financing Sources	960	(741)	—	—	—	—
Total	\$ 893,216	\$ 881,809	\$ 1,229,950	\$ 1,079,310	\$ (150,640)	(12.2) %

Golf Courses

PROGRAM EXPENDITURES

	2002 FTE	2003 FTE	2002 Budget	2003 Budget	Absolute Change	Percent Change
Spanaway Lake - Operations	6.15	6.15	\$ 680,820	\$ 686,240	\$ 5,420	0.8 %
Spanaway Lake - Capital	—	—	294,250	115,000	(179,250)	(60.9)
Ft Steilacoom - Operations	2.30	2.30	231,880	239,070	7,190	3.1
Ft Steilacoom - Capital	—	—	23,000	39,000	16,000	69.6
Total	8.45	8.45	\$ 1,229,950	\$ 1,079,310	\$ (150,640)	(12.2) %

STAFFING SUMMARY

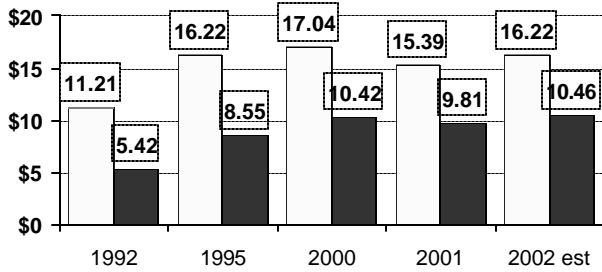
	1998 FTE	1999 FTE	2000 FTE	2001 FTE	2002 FTE	2003 FTE
Planner	0.05	0.05	0.05	0.05	0.05	0.05
Golf Supervisor	1.00	1.00	1.00	1.00	1.00	1.00
Golf Course Coordinator	—	—	—	2.00	2.00	2.00
Parks Maintenance Tech	7.00	7.00	7.00	5.00	5.00	5.00
Office Assistant	0.40	0.40	0.40	0.40	0.40	0.40
Total	8.45	8.45	8.45	8.45	8.45	8.45

WORKLOAD SERVICE DATA

	Unit of Measure	1998 Actual	1999 Actual	2000 Actual	2001 Actual	2002 Estimate	2003 Estimate
Lake Spanaway Golf Course:							
Rounds of golf	Admission	46,844	43,676	45,123	45,600	45,700	46,000
Golf car rentals	Rental	6,596	5,781	6,542	7,211	8,500	9,000
Driving range	Admission	23,256	19,110	24,215	21,000	30,000	40,000
Golf lessons	Participant	1,225	777	1,053	998	1,200	1,400
Ft. Steilacoom Golf Course:							
Rounds of golf	Admission	25,619	23,279	24,128	23,905	24,000	24,500
Golf car rental	Rental	1,360	1,400	1,523	1,756	1,800	1,900

BUDGET RATIOS

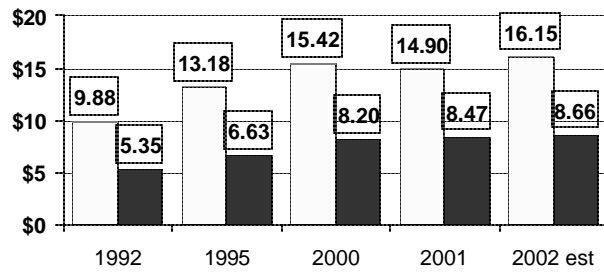
Expense per Round



□ Lake Spanaway ■ Fort Steilacoom

❖ From 1992 to 2002 the operating cost per round of golf increased 45% at Lake Spanaway and 93% at Fort Steilacoom after adjusting for inflation.

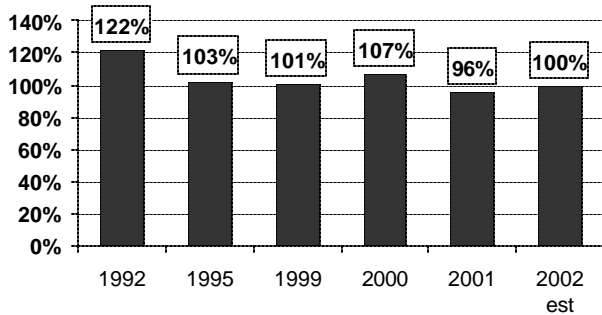
Revenue per Round



□ Lake Spanaway ■ Fort Steilacoom

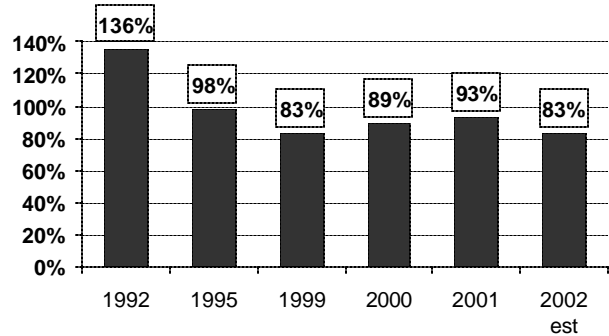
❖ From 1992 to 2002 the revenue per round of golf increased 63% at Lake Spanaway and 62% at Fort Steilacoom, unadjusted for inflation.

**Percent of Self-Support
Lake Spanaway**



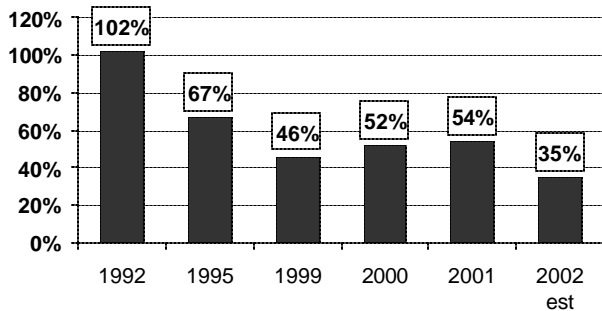
❖ From 1992 to 2002 the extent of self-support at Lake Spanaway decreased 18%.

**Percent of Self-Support
Fort Steilacoom**



❖ From 1992 to 2002 the extent of self-support at Fort Steilacoom decreased 39%.

Cash Balance to Revenue



❖ From 1992 to 2002 the cash balance at year-end compared to total revenue for the year decreased 66%.

Golf Courses

Park Impact Fee Fund

Special Revenue Fund

Departmental Summary: This fund accounts for the park impact fees collected per Ordinances #96-122S and #2000-19S. Funds are transferred to support projects as costs are incurred.

Budget Highlights: The 2,977,520 budget for fiscal 2003 simply reflects the transfer of park impact fees to the Parks projects listed below.

FUNDING SOURCES

	2000 Actual	2001 Actual	2002 Budget	2003 Budget	Absolute Change	Percent Change
Est Use Of Begin Fund Balance	\$ —	\$ —	\$ 2,830,000	\$ 2,237,520	\$ (592,480)	(20.9) %
Charges For Services	—	—	715,000	700,000	(15,000)	(2.1)
Miscellaneous Revenue	—	—	—	40,000	40,000	∞
Total	\$ —	\$ —	\$ 3,545,000	\$ 2,977,520	\$ (567,480)	(16.0) %

PROJECT SUMMARY

Project Name	CRP #	To Paths & Trails Fund	To Parks Construction	2003 Budget
Ashford/Elbe/Eatonville Area	4967	\$ —	\$ 50,000	\$ 50,000
Foothills Trail - Buckley to So Prairie	4911	242,000	—	242,000
Foothills Trail - Cascade Junction to Carbonado	4924	14,000	—	14,000
Foothills Trail - Orting to So Prairie	4910	765,000	—	765,000
Peninsula School Dist Fields	4970	—	910,000	910,000
South Hill Rogers HS Zeiger Fields	4969	—	800,000	800,000
Sprinker Facility Additions	4977	—	195,000	195,000
Subtotal Projects		1,021,000	1,955,000	2,976,000
Administration Support Expenses		—	—	1,520
Total		\$ 1,021,000	\$ 1,955,000	\$ 2,977,520

Park Impact Fee Fund

Parks and Recreation Services

General Fund

The mission of the Department of Parks and Recreation, as a regional provider, is to deliver quality recreation opportunities through a well-managed comprehensive network of parks, trails, open space and recreational facilities for the residents of Pierce County. This can be accomplished through creative partnerships, effective planning, competent and well-trained staff, and through efficient financial management.

Departmental Summary:

The Parks and Recreation Services Department provides leisure/facility services to residents in the unincorporated areas of Pierce County. The parks division maintains over 2,000 acres at 30 park sites, which include two community centers, four boat launch sites and a large variety of passive and active facilities. Several sites are committed to remain in their natural state without development. The division is also responsible for grounds maintenance of the County-City Building, Health, Public Services, Remann Hall, West Precinct, East Substation, and Medical Examiner's building, District Court building at Hosmer and Public Works shops.

The recreation division provides programs which include athletics, sports teams and leagues; arts, touring services; equestrian; aquatics; youth camps; volunteer coaches certification; tennis, badminton, golf, volksmarching, bicycling, ice skating and snow skiing, and environmental projects (i.e., Carless Commute). This division cooperates with school districts and private enterprise to provide facilities for above activities. Over one hundred and fifty contractual agreements are administered annually for recreation programs designed to be self-supporting with money generated from fees, grants, and donations.

Budget Highlights:

The 2003 budget total for Parks and Recreation is 1.6% above fiscal 2002. Next year's budget includes:

- a) Continuation of existing programs and services, adjusted for inflation;
- b) A new office assistant position in the "control room" at Sprinker in place of ongoing extra-hire staff.

The revenues reflect the anticipated annual payment from the City of Lakewood for its proportionate share of the maintenance expenses at Ft. Steilacoom Park (\$105,000).

Performance Measures

Parks Division:

- 1) Complete new garage/maintenance shop at Lake Tapps Park by the end of 2nd Quarter. (Goal D)

Recreation Division:

- 2) Create a new outdoor soccer program in the Parkland-Spanaway area for boys and girls,

ages five through eight, establishing ten teams in 2003. (Goal D)

Parks Construction:

- 3) In partnership with the Puyallup School District, construct an athletic complex consisting of four soccer fields and three softball fields on School District property primarily using bonded sales tax revenue with a total cost of \$7.8 million. (Goal E)

Parks and Recreation Services

FUNDING SOURCES

	2000 Actual	2001 Actual	2002 Budget	2003 Budget	Absolute Change	Percent Change
General Fund Support	\$ 3,066,275	\$ 3,382,637	\$ 3,530,120	\$ 3,531,720	\$ 1,600	— %
Grants/Intergovernmental	93,896	113,083	137,140	222,100	84,960	62.0
Fees/Charges	2,409,786	2,248,322	2,368,090	2,376,980	8,890	0.4
Total	\$ 5,569,957	\$ 5,744,042	\$ 6,035,350	\$ 6,130,800	\$ 95,450	1.6 %

PROGRAM EXPENDITURES

	2002 FTE	2003 FTE	2002 Budget	2003 Budget	Absolute Change	Percent Change
Administration	14.25	15.25	\$ 1,545,410	\$ 1,629,090	\$ 83,680	5.4 %
Grounds Maintenance	5.80	5.80	471,280	477,850	6,570	1.4
Recreation Services	5.05	5.05	1,186,680	1,114,800	(71,880)	(6.1)
Community Centers	1.15	1.15	248,810	206,810	(42,000)	(16.9)
Parks Maintenance	24.38	24.38	2,583,170	2,702,250	119,080	4.6
Total	50.63	51.63	\$ 6,035,350	\$ 6,130,800	\$ 95,450	1.6 %

STAFFING SUMMARY

	1998 FTE	1999 FTE	2000 FTE	2001 FTE	2002 FTE	2003 FTE
Dir - Parks & Recreation	1.00	1.00	1.00	1.00	1.00	1.00
Recreation Superintendent	1.00	1.00	1.00	1.00	1.00	1.00
Superintendent of Parks	1.00	1.00	1.00	1.00	1.00	1.00
Admin Prog Mgr	1.00	1.00	1.00	1.00	1.00	1.00
Planner	0.40	0.40	0.40	0.40	0.40	0.40
Community Center Manager	1.00	1.00	1.00	1.00	1.00	1.00
Parks & Rec Planner	1.00	1.00	1.00	1.00	1.00	1.00
Parks Supv	1.00	1.00	1.00	1.00	1.00	1.00
Facilities Maint Supv	1.00	1.00	1.00	1.00	1.00	1.00
Gardener	4.00	5.00	5.80	5.80	5.80	5.80
Recreation Supervisor	3.00	3.00	3.00	3.00	3.00	3.00
Parks Maintenance Tech	22.00	22.00	21.58	21.58	21.53	21.53
Community Center Rec Coord	1.00	1.00	1.00	1.00	1.00	1.00
Ice Skating Coordinator	0.75	0.75	0.78	0.78	0.78	0.78
Wellness Coordinator	—	—	—	1.00	1.00	1.00
Ice Skate Program Coord	0.70	0.70	0.77	0.77	0.77	0.77
Office Assistant	7.10	7.35	7.35	7.35	7.35	8.35
Custodian	1.00	1.00	1.00	1.00	1.00	1.00
Total	47.95	49.20	49.68	50.68	50.63	51.63

Parks and Recreation Services

EXPENDITURE BY ACTIVITY

	2002	2002	2002 General	2003	2003	2003 General
Prog	Budget	Revenue	Fund Support	Budget	Revenue	Fund Support
Administration						
Administrative Office	4101	\$ 679,450	\$ 76,500	\$ 602,950	\$ 703,640	\$ 625,740
Facility Planning	4103	115,170	—	115,170	—	116,850
Subtotal	794,620	76,500	718,120	820,490	77,900	742,590
Grounds Maintenance						
County-City Bldg Ground Maint	4501	65,780	69,070	(3,290)	66,890	(3,350)
Annex/LESA Grounds	4503	69,550	73,030	(3,480)	71,700	(3,590)
Remann Hall Ground Maint	4504	76,340	80,160	(3,820)	74,660	(3,730)
Precinct Grounds-West	4506	44,280	46,500	(2,220)	45,970	(2,300)
Precinct Grounds-East	4507	42,910	45,060	(2,150)	44,110	(2,210)
Medical Examiner Grounds	4508	19,850	20,840	(990)	20,400	(1,020)
Road Shops Grounds Maint	4509	93,540	98,220	(4,680)	91,590	(4,580)
Hosmer Bldg Ground Maintenance	4510	10,980	11,530	(550)	12,310	(620)
Parking Garage	4511	16,600	17,430	(830)	15,950	(800)
950 Building Maintenance	4512	14,470	15,200	(730)	15,290	(760)
Water Programs Ground Maint	4513	16,980	17,830	(850)	18,980	(950)
Subtotal	471,280	494,870	(23,590)	477,850	501,760	(23,910)
Lakewood Community Center	4385	266,710	167,230	99,480	293,420	129,340
Parks						
Maintenance-East Area Shop	4106	413,310	—	413,310	364,270	364,270
Maintenance-West Area Shop	4107	84,580	—	84,580	99,980	99,980
Gonyea Playfield	4109	105,090	4,080	101,010	91,470	85,470
East Area Small Parks	4110	50,330	1,800	48,530	46,860	45,060
Spanaway Park	4111	340,060	32,300	307,760	379,610	353,010
Frontier Park	4112	223,550	39,050	184,500	242,830	220,280
Dawson Playfield	4113	32,830	—	32,830	32,450	32,450
Purdy Sandspit	4114	—	360	(360)	—	—
Fairfax	4115	—	—	—	200	300
Ft Steilacoom Park	4118	161,120	18,100	143,020	231,550	106,550
Lakewood Small Parks	4128	1,810	—	1,810	1,920	1,920
Narrows Property	4129	24,070	5,300	18,770	18,740	12,210
Peninsula Small Parks	4133	28,400	3,000	25,400	26,360	22,590
Fox Island Fishing Pier	4134	19,490	500	18,990	18,520	18,020
Hales Pass Community Center	4144	14,900	1,400	13,500	16,550	14,720
Lake Tapps Park	4761	222,870	24,000	198,870	235,300	201,800
Subtotal	1,722,410	129,890	1,592,520	1,806,610	228,380	1,578,230
Recreation Programs						
Sound To Narrows	4401	161,340	—	161,340	177,500	176,000
All Area Programs	4402	4,040	10,200	(6,160)	—	—
Summer Food Service Program	4403	69,940	70,000	(60)	61,760	1,220
Gig Harbor/Key Peninsula Area	4404	50,000	—	50,000	—	—
Soccer & Football Camps	4410	17,410	17,800	(390)	16,450	(550)
Bicycle Grant/Car Less Commute	4412	7,500	7,500	—	14,500	14,500
Playgrounds	4413	10,580	10,580	—	—	—
Kidmobile & Picnics	4414	27,630	12,100	15,530	26,140	16,040
Special Populations Programs	4418	39,710	33,000	6,710	33,060	1,560
Track Program	4419	10,570	10,500	70	11,010	510
Fun, Fitness, Sports Camp	4420	24,110	25,000	(890)	24,970	4,970
Indoor Soccer & Others	4422	17,180	22,000	(4,820)	20,430	(2,570)
Adult Leagues	4423	152,710	132,000	20,710	150,160	5,160
Centennial/Tour De Pierce	4424	9,140	9,000	140	8,990	(150)
Ski School	4426	20,940	21,000	(60)	18,520	2,520
Bicycle Safety	4430	1,130	1,500	(370)	1,160	(340)
Companionship Project	4431	66,020	64,560	1,460	68,370	2,810
Alpine Ski School	4435	2,100	2,100	—	2,360	260
Youth Leagues	4436	116,330	62,000	54,330	90,810	34,260
County Employees Wellness Program	4450	89,050	—	89,050	89,070	89,070
Fantasy Lights	4980	204,780	178,000	26,780	210,040	17,540
Subtotal	1,102,210	688,840	413,370	1,025,300	677,450	347,850
Sprinkler Recreation Center						
Sprinkler Recreation Center	4225	1,363,560	811,100	552,460	1,416,460	548,600
Sprinkler Craft Classes	4226	52,060	35,000	17,060	57,730	19,730
Batting Cage	4227	1,170	—	1,170	—	—
Ice Arena Concession	4228	44,280	47,000	(2,720)	300	(7,200)
SRC Sports Activities	4229	11,530	28,500	(16,970)	15,330	(820)
USSSA Tournaments	4230	4,640	18,300	(13,660)	9,160	(2,840)
SRC Outside Maintenance	4231	200,480	—	200,480	207,850	207,850
SRC Outside Concessions	4232	400	8,000	(7,600)	300	(7,700)
Subtotal	1,678,120	947,900	730,220	1,707,130	949,510	757,620
Grand Total	\$ 6,035,350	\$ 2,505,230	\$ 3,530,120	\$ 6,130,800	\$ 2,599,080	\$ 3,531,720

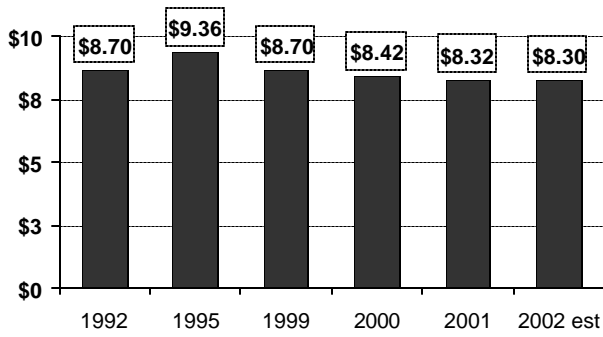
Parks and Recreation Services

WORKLOAD SERVICE DATA

	Unit of Measure	1999 Actual	2000 Actual	2001 Estimate	2001 Actual	2002 Estimate	2003 Estimate
Land							
- Resource Conservancy	Acres	696	696	696	700	1,738	1,738
- Resource Activity	Acres	852	852	852	852	852	852
- Linear Trails	Acres	246	246	246	246	363	363
- Special Use Facilities	Acres	289	289	289	289	307	307
Facilities							
- Courts, Fields, Play Areas	Each	49	49	49	49	50	50
- Multipurpose Trails	Miles of Trail	32	32	32	32	34	34
- Picnic & Camping Areas	Each	332	332	332	340	360	360
Spaces							
- Access to Water/Sq. Ft. of Area	Sq. Ft.	28,320	28,320	28,320	28,320	28,320	28,320
- Boat Launch Ramps	Each	4	4	4	4	4	4
Youth/Adult Athletics	# teams	384	371	390	431	440	450
Summer Camps/Mobile Rec.	Participant	6,200	6,700	7,000	12,000	14,000	14,000
Outdoor Recreational Activities	Participant	76	100	200	50	40	40
Bicycling Events	Participant	597	1,839	2,500	850	875	900
Companionship Program	Participant	2,500	3,800	5,200	4,690	5,200	6,000
Carless Commute Program	Participant	550	596	750	1,052	840	900
Wellness Program							
- Health screenings/Flu shots	Participant	920	950	950	1,011	1,100	1,150
- Newsletters published	Issues	12	12	12	12	12	12
Summer Food Program	# lunches serv	34,000	14,000	18,000	25,000	25,000	25,000
Fantasy Lights	Visitors	110,000	115,000	130,000	140,000	150,000	160,000
Sprinker Center							
- Outdoor activities	Participant	65,307	81,675	65,000	71,295	80,000	80,000
- Indoor activities	Participant	238,227	208,971	240,000	216,165	225,000	225,000
Lakewood Center							
- Gymnasium activities	Participant	42,000	59,300	59,500	37,873	40,000	40,000
- Tenant activities	Participant	35,545	24,000	26,000	44,650	40,000	33,000
- Group Meetings	Participant	47,450	15,321	15,000	8,963	8,000	8,000

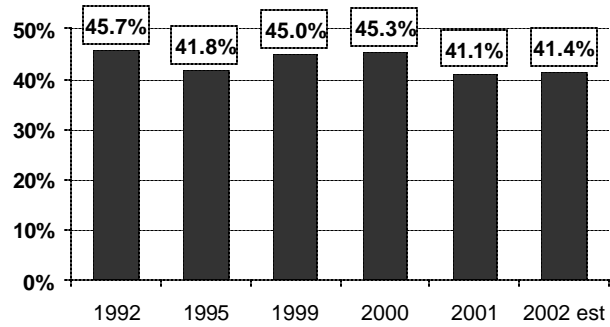
BUDGET RATIOS

Per Capita Expenditures



❖ From 1992 to 2002 the per capita expenditures for all County residents decreased 5% after adjusting for inflation.

Percent of Self-Support



❖ From 1992 to 2002 the extent of self-support decreased 9%.

Parks and Recreation Services

Parks Sales Tax Fund

Special Revenue Fund

Departmental Summary:

On September 19, 2000, the voters of Pierce County approved Proposition 1, authorizing the imposition of a sales and use tax equal to one tenth of one percent within Pierce County to be used for regional and local parks, accredited zoos, aquariums and wildlife preserves.

The allocation of the tax receipts (which was imposed on January 1, 2001) was established as 50% for the Zoo/Trek authority and 50% for the Cities and Pierce County. The second 50% is in turn allocated to the Cities (or Metro Parks in the case of Tacoma) and the County based upon the most recent state certified population figures. The Parks Sales Tax fund receives the County's allocation and accounts for the disbursement of these funds

Budget Highlights:

The 2003 Parks Sales Tax Fund budget totals \$2,175,000. The detailed projects and expenses are presented on the following page. In summary, the budget includes:

- a) Contributions to the Fort Steilacoom and Peninsula projects and programs (\$450,000);
- b) General Park Repair/Improvement Projects (\$100,000);
- c) Debt Issuance Costs and Amounts Designated for Future Debt Service for a park bond scheduled to be issued in late 2003, with the first debt service payment in 2004 (\$1,522,640); and
- d) General Administration and Planning expenses (\$102,360).

FUNDING SOURCES

	2000 Actual	2001 Actual	2002 Budget	2003 Budget	Absolute Change	Percent Change
Est Use Of Begin Fund Balance	\$ —	\$ —	\$ 1,500,000	\$ 175,000	\$ (1,325,000)	(88.3) %
Taxes	—	1,611,914	1,900,000	2,000,000	100,000	5.3
Other Financing Sources	—	—	18,950,000	—	(18,950,000)	(100.0)
Total	\$ —	\$ 1,611,914	\$ 22,350,000	\$ 2,175,000	\$ (20,175,000)	(90.3) %

Parks Sales Tax Fund

PROJECT SUMMARY

Project Name	CRP #	To Peninsula Parks Fund (146)	To 2nd REET Construction Fund (321)	2003 Budget
Fort Steilacoom Park Fields	4972	\$ —	\$ 300,000	\$ 300,000
Gig Harbor Peninsula Parks Allocation	4438	100,000	—	100,000
Peninsula School District Allocation	4439	50,000	—	50,000
Subtotal Transfers		150,000	300,000	450,000
Administrative Support and Planning Expenses		—	—	102,360
Bond Issuance Costs		—	—	300,000
Designated for Future Debt Service		—	—	1,222,640
General Park Facility Repairs and Improvements		—	—	100,000
Subtotal Direct Expenses in this Fund		—	—	1,725,000
Total		\$ 150,000	\$ 300,000	\$ 2,175,000

Paths and Trails Fund

Special Revenue Fund

The mission of the Paths & Trails Program is to develop a network of multi-use, alternative transportation pathways throughout Pierce County.

Departmental Summary: The Paths and Trails Fund, managed by Parks and Recreation Services, is dedicated to development of a network of multi-use paths and trails throughout the County. The fund was established in 1987 to provide resources for planning, construction, acquisition and maintenance of a path and trail system. Fund revenues are an allocation of at least one-half of 1% of the total funds received from the motor vehicle fuel tax, as authorized by RCW 47.30.

Budget Highlights: The 2003 budget of \$2,143,750 reflects the construction projects planned for 2003, utilizing County monies and related grants. The projects and activities are shown on the next page along with the related funding sources.

Performance Measures

- 1) Construct the newly acquired Meeker to McMillin segment of the Foothills Trail between 136th Street in McMillin and 134th Street in Puyallup with a trailhead installed near 134th Street. (Goal D)

FUNDING SOURCES							
	2000 Actual	2001 Actual	2002 Budget	2003 Budget	Absolute Change	Percent Change	
Est Use Of Begin Fund Balance	\$ —	\$ —	\$ 436,820	\$ —	\$ (436,820)	(100.0)	%
Intergovernmental Revenue	581,628	825,326	532,470	1,102,750	570,280	107.1	
Charges For Services	—	182,692	—	—	—	—	
Miscellaneous Revenue	6,200	12,501	—	20,000	20,000	∞	
Other Financing Sources	300,000	3,006	1,000,000	1,021,000	21,000	2.1	
Total	\$ 887,828	\$ 1,023,525	\$ 1,969,290	\$ 2,143,750	\$ 174,460	8.9	%

Paths and Trails Fund

PROJECT SUMMARY

Project Name	Proj #	2003 Total Budget	Funding Sources				2003 Total Revenues
			Grants & Contrib	Motor Vehicle Fuel	Parks Impact Fees	Lease Revenues	
Cascade Junction to Carbonado	4924	\$ 89,000	\$ 75,000	\$ —	\$ 14,000	\$ —	\$ 89,000
ESA Bridge Work	4915	66,500	—	66,500	—	—	66,500
ISTEA Buckley to South Prairie	4911	304,060	—	62,060	242,000	—	304,060
ISTEA Orting to South Prairie	4910	1,494,000	729,000	—	765,000	—	1,494,000
GMA Capital Facilities Plan		1,953,560	804,000	128,560	1,021,000	—	1,953,560
Administration		100,380	—	100,380	—	—	100,380
McMillin to Meeker - trr to Fd 321	4925	20,000	—	—	—	20,000	20,000
Unallocated		9,030	—	9,030	—	—	9,030
Trail Maintenance		60,780	—	60,780	—	—	60,780
Total		\$ 2,143,750	\$ 804,000	\$ 298,750	\$ 1,021,000	\$ 20,000	\$ 2,143,750

Note: The portion of projects funded with the bonds from the Parks Sales tax are in the Parks Bond Construction Fund

STAFFING SUMMARY

	1998 FTE	1999 FTE	2000 FTE	2001 FTE	2002 FTE	2003 FTE
Planner	0.05	0.05	0.05	0.05	0.05	0.05
Trails Right of Way Agent	1.00	1.00	1.00	1.00	1.00	1.00
Parks Maintenance Tech	—	—	0.42	0.42	0.47	0.47
County Attorney	1.00	1.00	—	—	—	—
Total	2.05	2.05	1.47	1.47	1.52	1.52

Peninsula Recreation Program

Special Revenue Fund

Departmental Summary:

This fund is used to account for the revenues and expenditures related to those recreation services in the Gig Harbor Peninsula area covered by the interlocal agreement between the County, Peninsula School District, and the City of Gig Harbor. The current funding sources are the Parks Sales Tax, an allocation from the City of Gig Harbor, and related recreation fees.

Budget Highlights:

The 2003 budget reflects the Recreation Supervisor position and related costs for recreational programs, the peninsula recreation coordinator allocation, facility rental expenses, and a reimbursement for School District custodial services.

FUNDING SOURCES

	2000 Actual	2001 Actual	2002 Budget	2003 Budget	Absolute Change	Percent Change
Intergovernmental Revenue	\$ —	\$ —	\$ —	\$ 15,000	\$ 15,000	∞ %
Charges For Services	—	—	—	35,000	35,000	∞
Other Financing Sources	—	—	—	150,000	150,000	∞
Total	\$ —	\$ —	\$ —	\$ 200,000	\$ 200,000	∞ %

PROGRAM EXPENDITURES

	2002 FTE	2003 FTE	2002 Budget	2003 Budget	Absolute Change	Percent Change
Gig Harbor Pnsula Parks Alloc *	1.00	1.00	\$ —	\$ 150,000	\$ 150,000	∞ %
Peninsula School Dist Alloc	—	—	—	50,000	50,000	∞
Total	1.00	1.00	\$ —	\$ 200,000	\$ 200,000	∞ %

STAFFING SUMMARY

	1998 FTE	1999 FTE	2000 FTE	2001 FTE	2002 FTE	2003 FTE
Recreation Supervisor *	—	—	—	—	1.00	1.00
Total	—	—	—	—	1.00	1.00

* position to be added near the end of 2002

Peninsula Recreation Program

Pierce County Fair

Special Revenue Fund

Departmental Summary:

This fund provides for the Pierce County Fair held annually at Frontier Park in Graham. The Pierce County Fair Association operates and manages the Fair with revenues from the State Fair Fund, Fair operations, and County contributed funds.

The Fair provides opportunities for 4-H, FFA, and Open Show exhibitions and demonstrations. A primary function of the Fair is to encourage youth in practical experience in fields of agriculture and home economics. The Fair also provides recreation and amusement through carnivals, contests, competition; encourages trade and display of farm, home and factory products; builds community pride and promotes public education.

Budget Highlights:

The 7.0% increase in the Pierce County Fair 2003 budget reflects an anticipated growth in attendees due to more available parking. It also includes expenditure increases in personnel costs and related support costs due to additional personnel for maintenance during the fair.

FUNDING SOURCES

	2000 Actual	2001 Actual	2002 Budget	2003 Budget	Absolute Change	Percent Change
Est Use Of Begin Fund Balance	\$ —	\$ —	\$ 22,080	\$ 9,730	\$ (12,350)	(55.9) %
Intergovernmental Revenue	37,558	37,089	37,000	37,000	—	—
Charges For Services	79,143	76,387	75,000	95,400	20,400	27.2
Miscellaneous Revenue	17,983	16,559	15,320	19,100	3,780	24.7
Other Financing Sources	20,000	20,000	20,000	20,000	—	—
Total	\$ 154,684	\$ 150,035	\$ 169,400	\$ 181,230	\$ 11,830	7.0 %

EXPENDITURES

	2000 Actual	2001 Actual	2002 Budget	2003 Budget	Absolute Change	Percent Change
Salaries & Wages	\$ 30,688	\$ 32,824	\$ 35,500	\$ 40,000	\$ 4,500	12.7 %
Personnel Benefits	8,185	12,629	9,540	14,700	5,160	54.1
Supplies	12,505	12,204	16,500	16,200	(300)	(1.8)
Other Services & Charges	87,022	94,007	107,860	110,330	2,470	2.3
Total	\$ 138,400	\$ 151,664	\$ 169,400	\$ 181,230	\$ 11,830	7.0 %

Pierce County Fair

WORKLOAD SERVICE DATA

	Unit of Measure	1998 Actual	1999 Actual	2000 Actual	2001 Actual	2002 Estimate	2003 Estimate
Total exhibits	Exhibits	4,786	5,295	5,466	5,454	5,500	5,475
Exhibitors:							-
4-H	Exhibitors	612	597	567	602	580	610
FFA	Exhibitors	47	24	24	64	24	50
Open class	Exhibitors	430	421	385	407	400	410
Concessions	Vendors	130	150	150	150	150	150
State Report points received	Total	1,852	1,879	1,739	1,916	1,800	1,850
Attendance:							
Paid	Individuals	20,235	17,372	20,507	17,236	21,000	18,000
Passes/Free gate	Individuals	4,039	3,830	3,567	4,047	3,600	4,050
Kids under 6	Individuals	3,100	2,500	2,500	3,468	2,500	3,470
Total proceeds from attendance	Dollars	48,712	37,790	43,593	43,056	44,000	60,000
Total proceeds from parking	Dollars	8,670	5,668	7,304	8,184	7,300	10,000

Second REET Fund

Special Revenue Fund

Departmental Summary:

The Second R.E.E.T. which can only be allocated for infrastructure projects (e.g. roads, sewers, parks, water systems,) was approved in late 2001, to be effective in 2002. The Council approved a general allocation of 75% for Transportation projects and 25% for Parks and Recreation projects.

Budget Highlights:

The 2003 Budget reflects the allocation of these monies as shown below. Funding is provided by 2002 and 2003 REET Revenues, plus potential interim loan financing for the Cross Base Highway project.

FUNDING SOURCES

	2000 Actual	2001 Actual	2002 Budget	2003 Budget	Absolute Change	Percent Change
Est Use Of Begin Fund Balance	\$ —	\$ —	\$ —	\$ 3,306,740	\$ 3,306,740	∞ %
Taxes	—	—	4,050,000	4,000,000	(50,000)	(1.2)
Other Financing Sources	—	—	—	1,650,000	1,650,000	∞
Total	\$ —	\$ —	\$ 4,050,000	\$ 8,956,740	\$ 4,906,740	121.2 %

EXPENDITURES

	2000 Actual	2001 Actual	2002 Budget	2003 Budget	Absolute Change	Percent Change
Other Services & Charges	\$ —	\$ —	\$ —	\$ 7,606,740	\$ 7,606,740	∞ %
Capital Outlays	—	—	4,050,000	1,350,000	(2,700,000)	(66.7)
Total	\$ —	\$ —	\$ 4,050,000	\$ 8,956,740	\$ 4,906,740	121.2 %

PROJECT SUMMARY

Project Name	CRP #	2003 Budget	Funding Sources		2003 Total Revenues
			Loan Financing	2nd REET	
Public Works Projects (75%)					
Spanaway Loop Road South Extention	5453	\$ 2,500,000		\$ 2,500,000	\$ 2,500,000
SR-704 (Cross Base Highway)	5469	5,000,000	1,650,000	3,350,000	5,000,000
Total Public Works Projects		7,500,000	1,650,000	5,850,000	7,500,000
Parks Projects (25%)					
Eatonville Skate Park	4950	150,000	—	150,000	150,000
Fort Steilacoom Park	4972	300,000	—	300,000	300,000
Graham Skate Park	4951	150,000	—	150,000	150,000
Nathan Chapman Memorial Trail	4916	300,000	—	300,000	300,000
Parks Regional Planning/Admin Support	4901	105,000	—	105,000	105,000
Stewart Heights Pool	4953	300,000	—	300,000	300,000
Volunteer Park Improvements	4952	150,000	—	150,000	150,000
Total Parks Projects		1,455,000	—	1,455,000	1,455,000
Administration Support Expenses		1,740	—	1,740	1,740
Total		\$ 8,956,740	\$ 1,650,000	\$ 7,306,740	\$ 8,956,740

Second REET Fund

Tourism Promotion & Capital Facilities Fund

Special Revenue Fund

Departmental Summary:

This fund accounts for proceeds from the 7% excise tax on lodging. The tax can be expended for activities designed to increase tourism, including but not limited to advertising, publicizing, or otherwise distributing information for the purpose of attracting and welcoming tourists; developing strategies to expand tourism; operating tourism promotion agencies; and funding marketing of special events and festivals designed to attract tourists.

Budget Highlights:

The proposed budget for the Tourism Promotion and Capital Facilities Fund is approximately 8% above the 2002 level, with the specific recommendations presented on the next page. This budget allocates \$131,000 in a contingency account until such time as the lawsuit regarding the special 3% tax has been resolved.

FUNDING SOURCES

	2000 Actual	2001 Actual	2002 Budget	2003 Budget	Absolute Change	Percent Change
Est Use Of Begin Fund Balance	\$ —	\$ —	\$ 50,000	\$ —	\$ (50,000)	(100.0) %
Taxes	402,904	432,367	350,000	433,000	83,000	23.7
Total	\$ 402,904	\$ 432,367	\$ 400,000	\$ 433,000	\$ 33,000	8.2 %

STAFFING SUMMARY

	1998 FTE	1999 FTE	2000 FTE	2001 FTE	2002 FTE	2003 FTE
Admin Program Mgr	—	—	0.07	0.05	0.05	0.10
Grant Accountant	—	—	0.03	0.03	0.03	0.03
Contract Compliance Spec	—	—	—	0.05	0.02	0.24
Administrative Aide	—	—	—	—	—	0.03
Accounting Assistant	—	—	0.03	0.03	—	—
Total	—	—	0.13	0.16	0.10	0.40

Tourism Promotion & Capital Facilities Fund

EXPENDITURES							
	2000	2001	2002	2003	Absolute	Percent	
	Actual	Actual	Budget	Budget	Change	Change	
Administration							
Advertising	\$ 1,071	\$ 622	\$ 1,000	\$ 1,000	\$ —	—	%
Audit Services	55	68	120	190	70	58.3	
Community Svcs Staff Support	9,981	9,163	9,840	24,590	14,750	149.9	
Data Processing	370	430	360	520	160	44.4	
Insurance	—	140	150	170	20	13.3	
Interfund Interest Pd	123	—	—	—	—	—	
Interfund- Indirect Cost	4,140	4,160	4,070	5,680	1,610	39.6	
Performance Audit Reimb	110	105	170	180	10	5.9	
Total Administration	15,850	14,688	15,710	32,330	16,620	(23.5)	
Programs							
Arts Comm Festival Develop	22,500	—	—	—	—	—	
Arts Commission	55,000	—	—	—	—	—	
Broadway Center	12,000	—	—	—	—	—	
Browns Pt Historical Signage	—	—	6,050	3,910	(2,140)	(35.4)	
Cheney Stadium	35,000	35,000	—	—	—	—	
Contingency	—	—	—	131,000	131,000	∞	
Crystal Mtn Area Marketing	—	—	42,000	20,000	(22,000)	(52.4)	
Data Proc Minor Equipment	—	—	520	—	(520)	(100.0)	
East PC Chamber of Commerce	1,317	—	—	—	—	—	
GH Chamber of Commerce	—	21,178	25,000	24,000	(1,000)	(4.0)	
GH/KP Cultural Arts Festival	1,550	3,000	3,000	—	(3,000)	(100.0)	
Gig Harbor Renaissance Faire	—	—	7,000	10,000	3,000	42.9	
Mt Rainier Business Assn	61,080	118,210	145,540	77,030	(68,510)	(47.1)	
Mt Tahoma Trails	8,000	6,500	—	20,000	20,000	∞	
Other Professional Services	—	—	1,340	—	(1,340)	(100.0)	
Parks/Rec - Site Clearance	40,000	—	40,000	—	(40,000)	(100.0)	
PCED Mountaineering Museum	—	35,000	—	—	—	—	
Sports Commission	10,000	5,000	10,000	7,500	(2,500)	(25.0)	
Training and Development	—	88	130	—	(130)	(100.0)	
Unallocated Funds	—	—	23,710	3,730	(19,980)	(84.3)	
Visitor & Convent Bur	83,000	75,000	80,000	95,000	15,000	18.8	
White River Visitor Ctr.	—	—	—	8,500	8,500	∞	
Total Programs	329,447	298,976	384,290	400,670	16,380	4.3	
Total	\$ 345,297	\$ 313,664	\$ 400,000	\$ 433,000	\$ 33,000	8.2	%