

Attachments

Superior Court Workload and Performance Performance Audit Committee, September 15, 2005

There are 16 attachments, as follows.

1. Criminal Case Filings, 2001 - 2005, by Month
2. Criminal Case Resolutions, 2001 - 2005, by Month
3. Superior Court Pending Criminal Cases, 2001 - 2005, by Month
4. Superior Court Pending Criminal Cases, Indicating Change in Trend in 2003

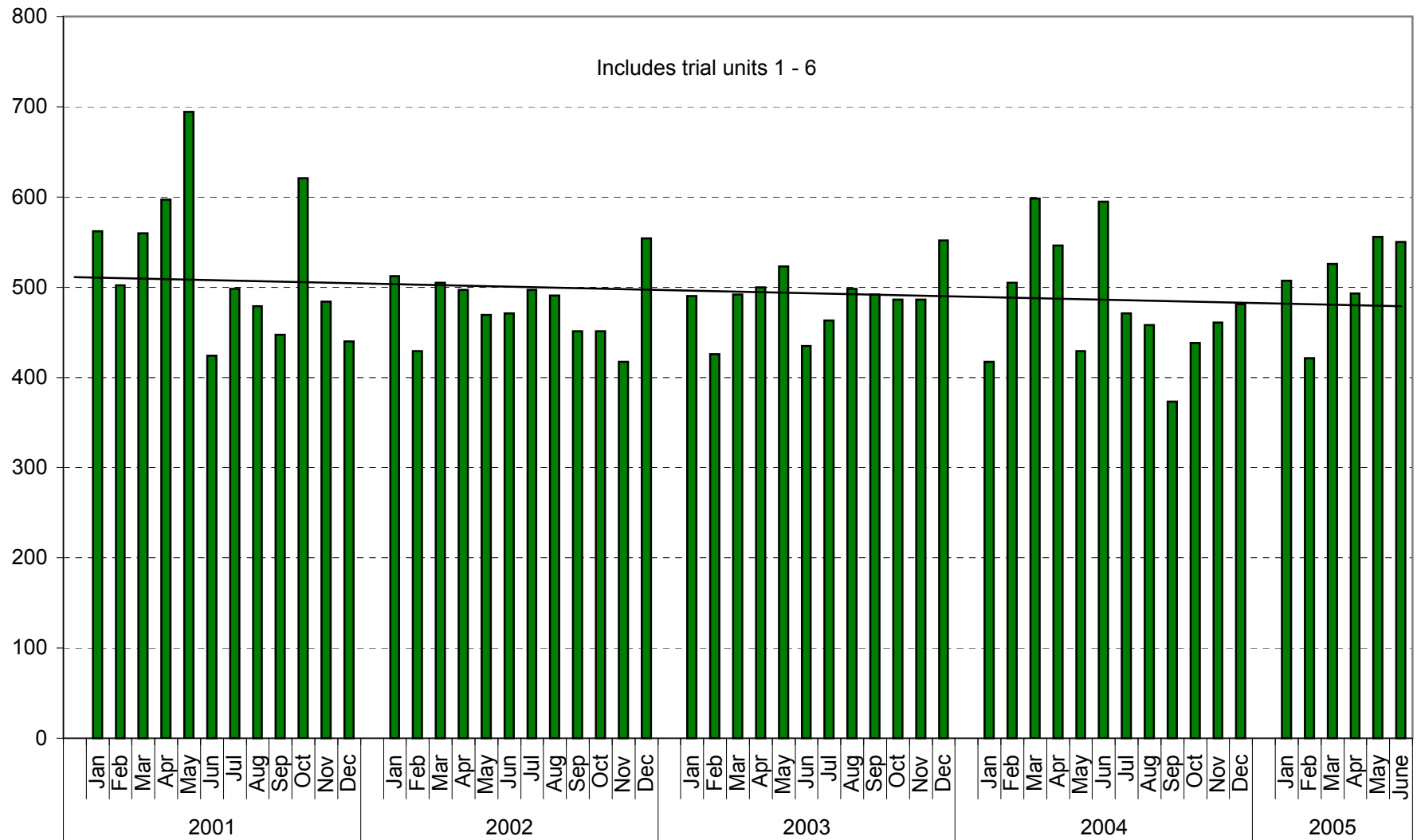
5. Median Age (in Days) of Pending Cases: Trial Units 1 – 5
6. Median Age (in Days) of Pending Cases: Homicide
7. Criminal Case Continuances by Month since 2001

8. Adult Criminal Filings per Judge, 1992 - 2004: Three Largest Superior Courts
9. Adult Criminal Filings per Judge, 1992 - 2004: Seven Superior Courts
10. Juvenile Offender Filings per Judge, 1992 - 2004

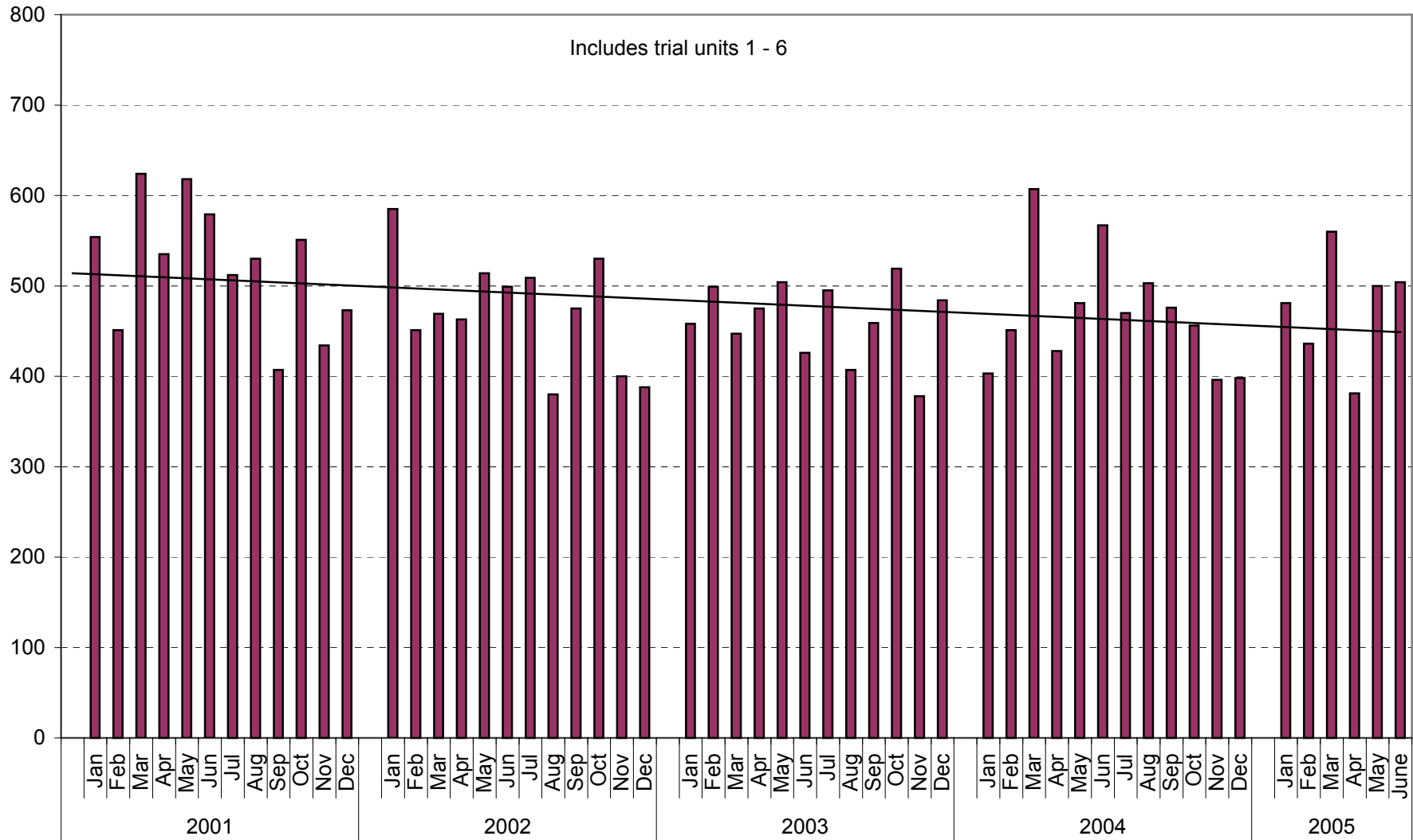
11. Civil Filings (all non-criminal cases) per Judicial Officer, 1992 - 2004
12. Civil Filings (type 2 cases) per Judicial Officer, 1992 - 2004
13. Civil Filings per Judicial Officer, excluding Domestic Violence and Civil Harassment Protection Orders
14. Total Filings per Judicial Officer, 1992 - 2004

15. Superior Court Pending Cases as of July 31, 2005
16. Total Pending Cases per Judicial Officer, July 31, 2005

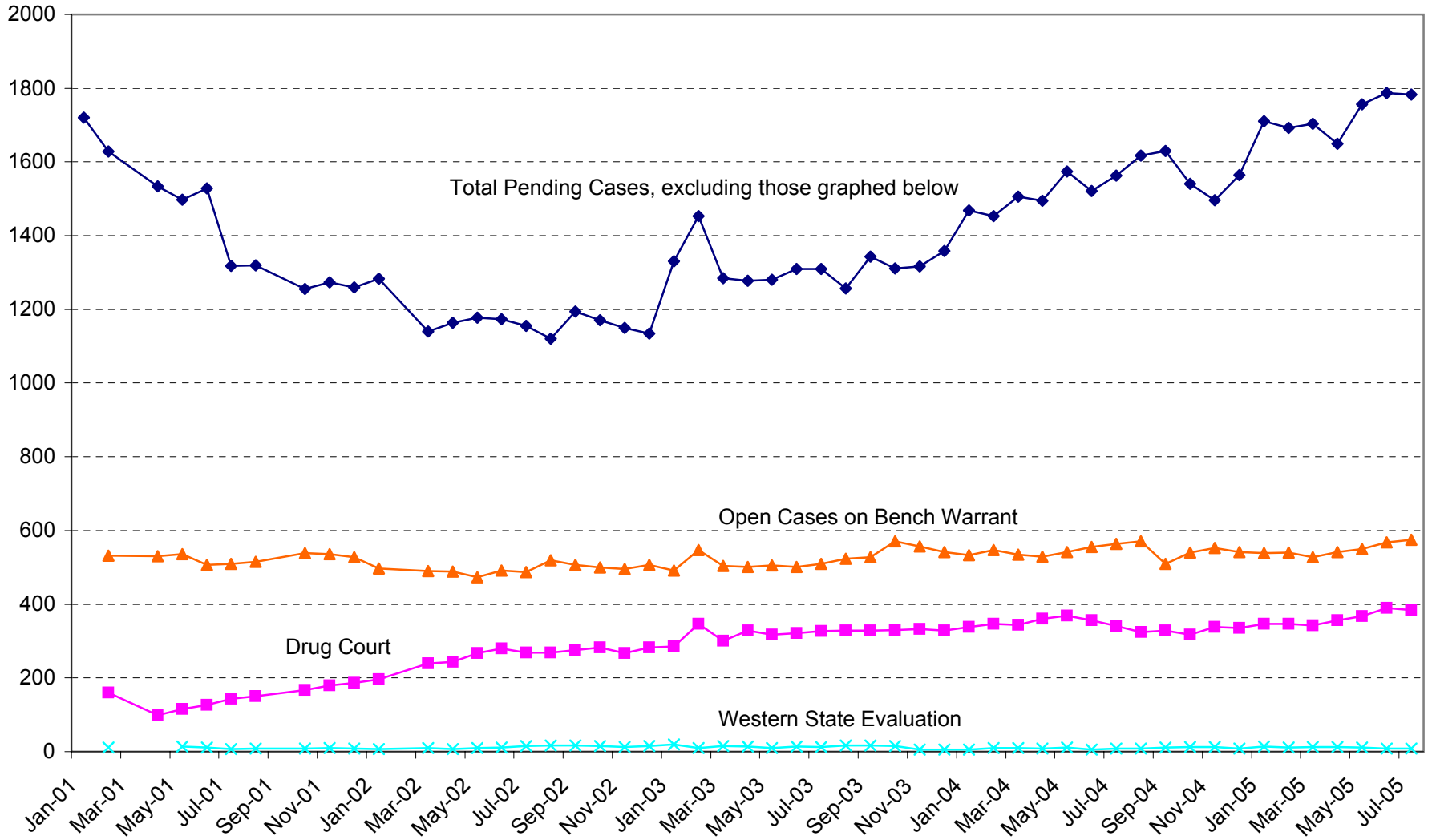
Criminal Case Filings, 2001 - 2005



Criminal Case Resolutions, 2001 - 2005

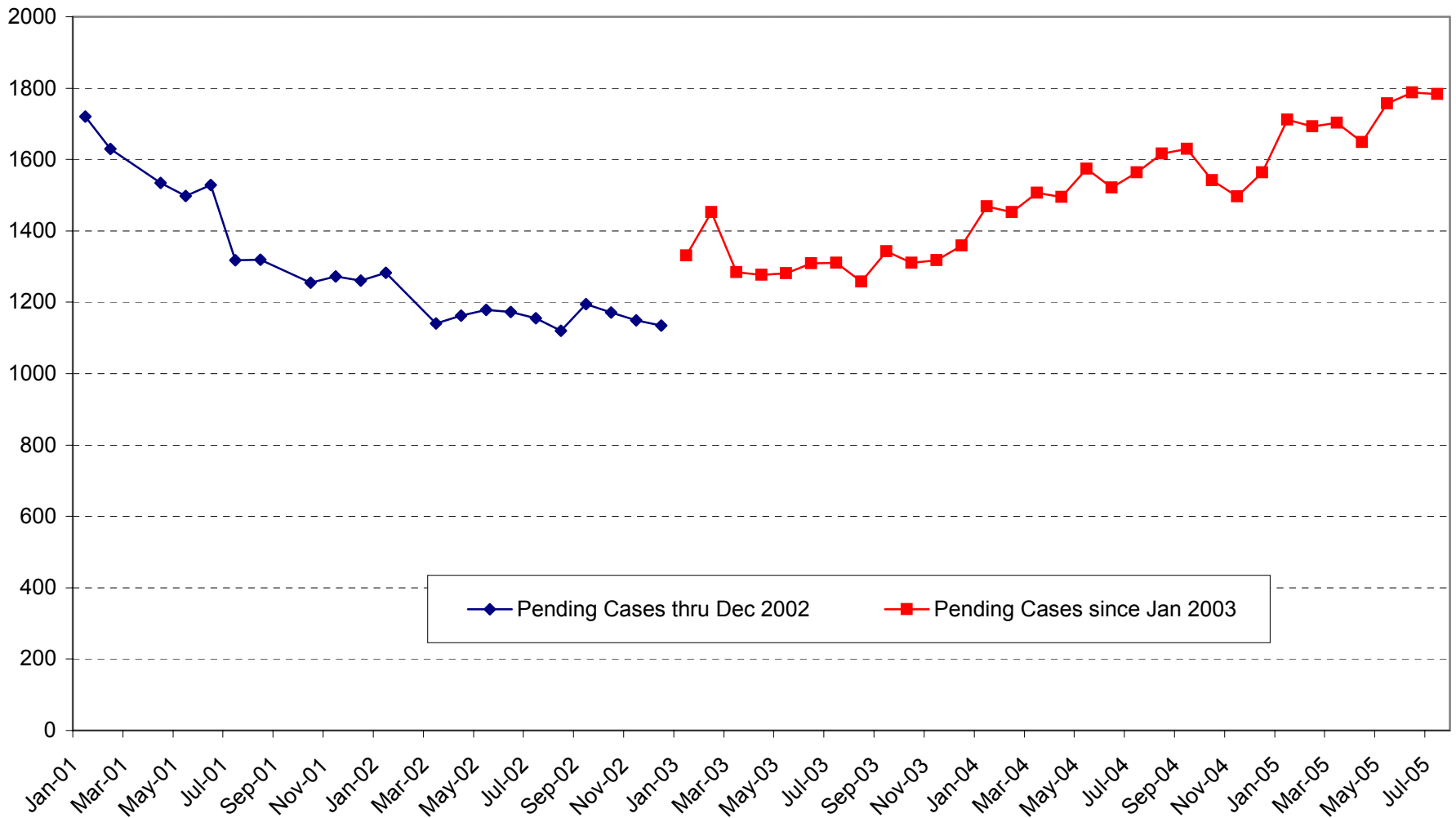


Superior Court Pending Criminal Cases, 2001 - 2005

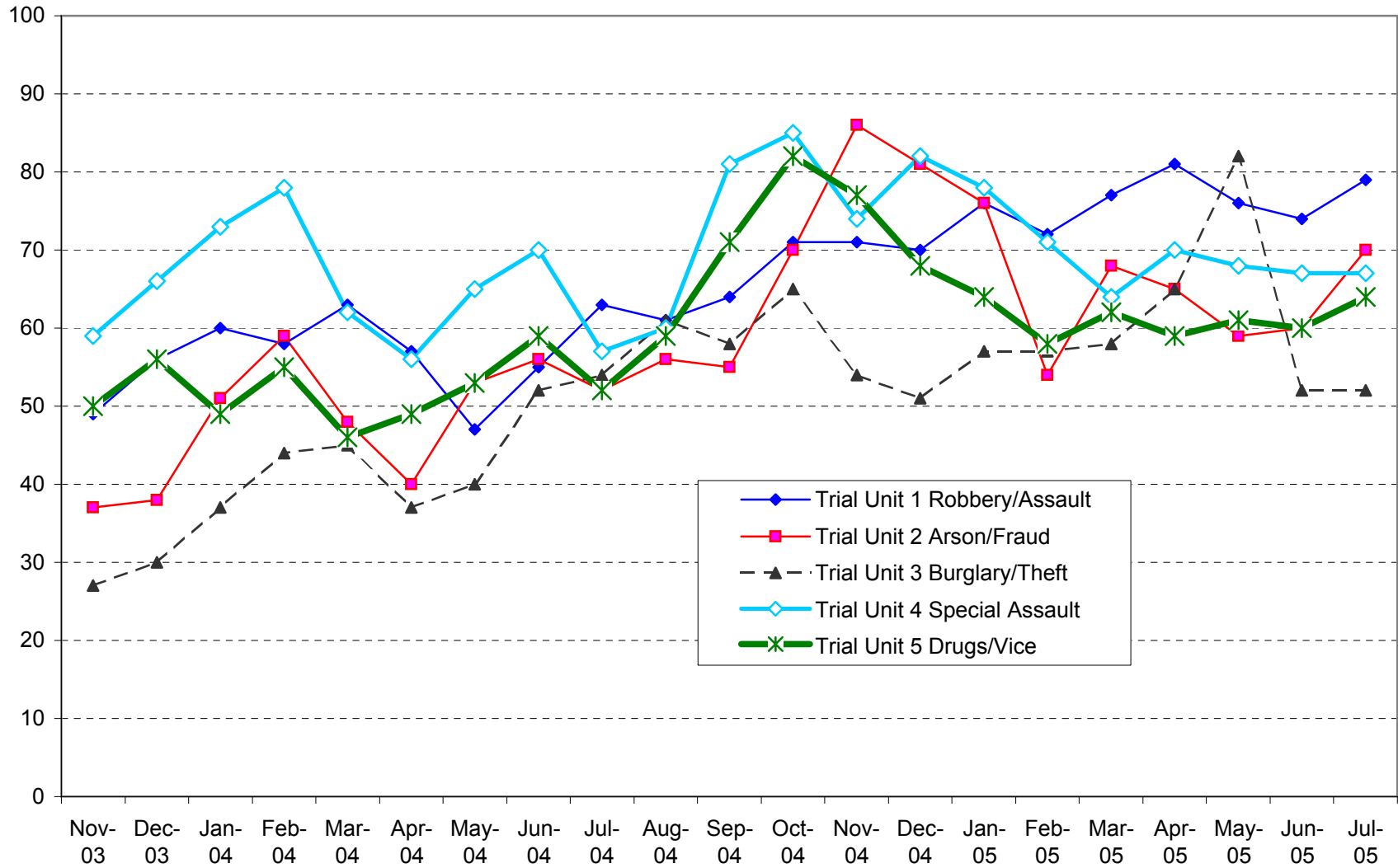


Data source: Superior Court, from LINX

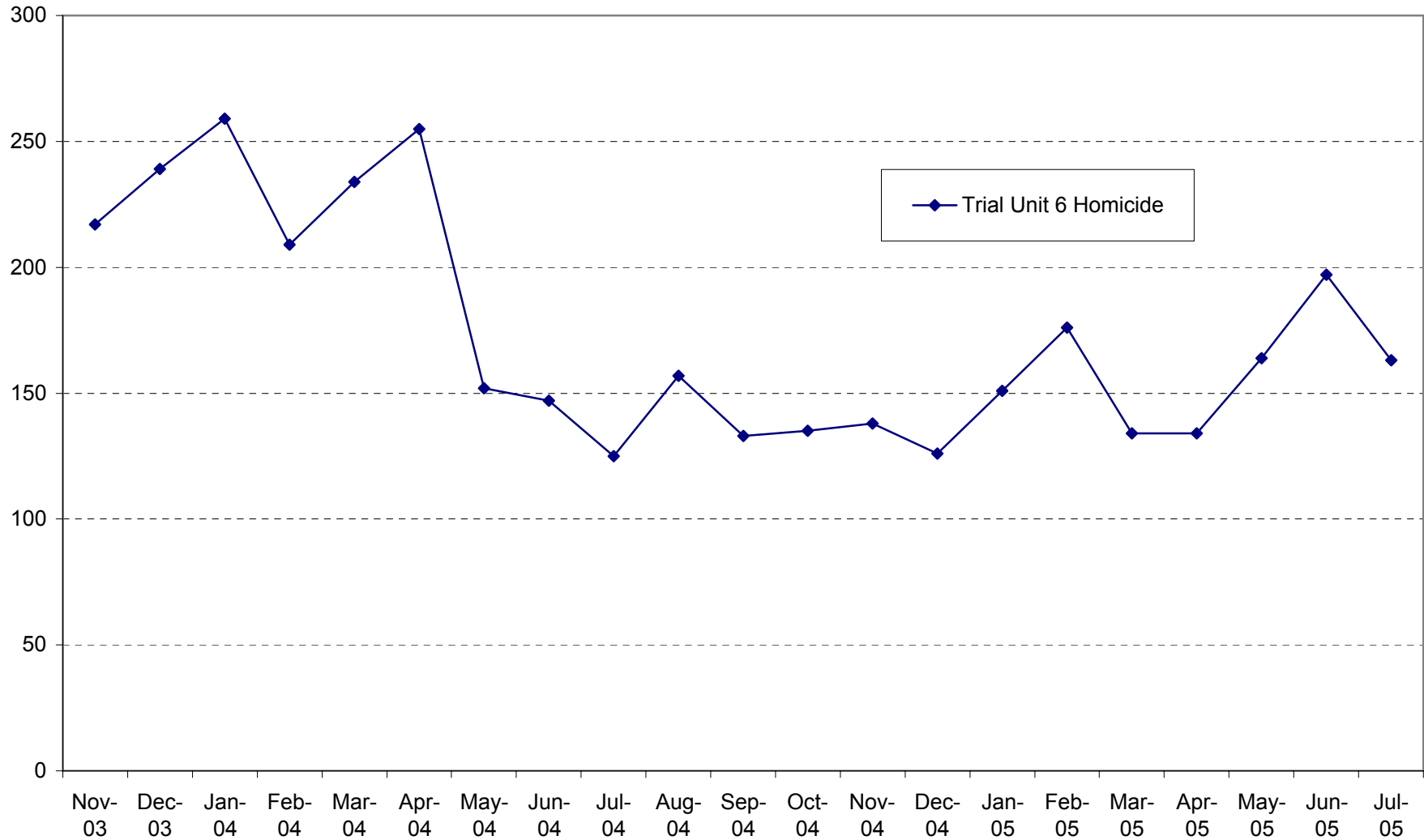
Superior Court Pending Criminal Cases, Indicating Change in Trend in 2003



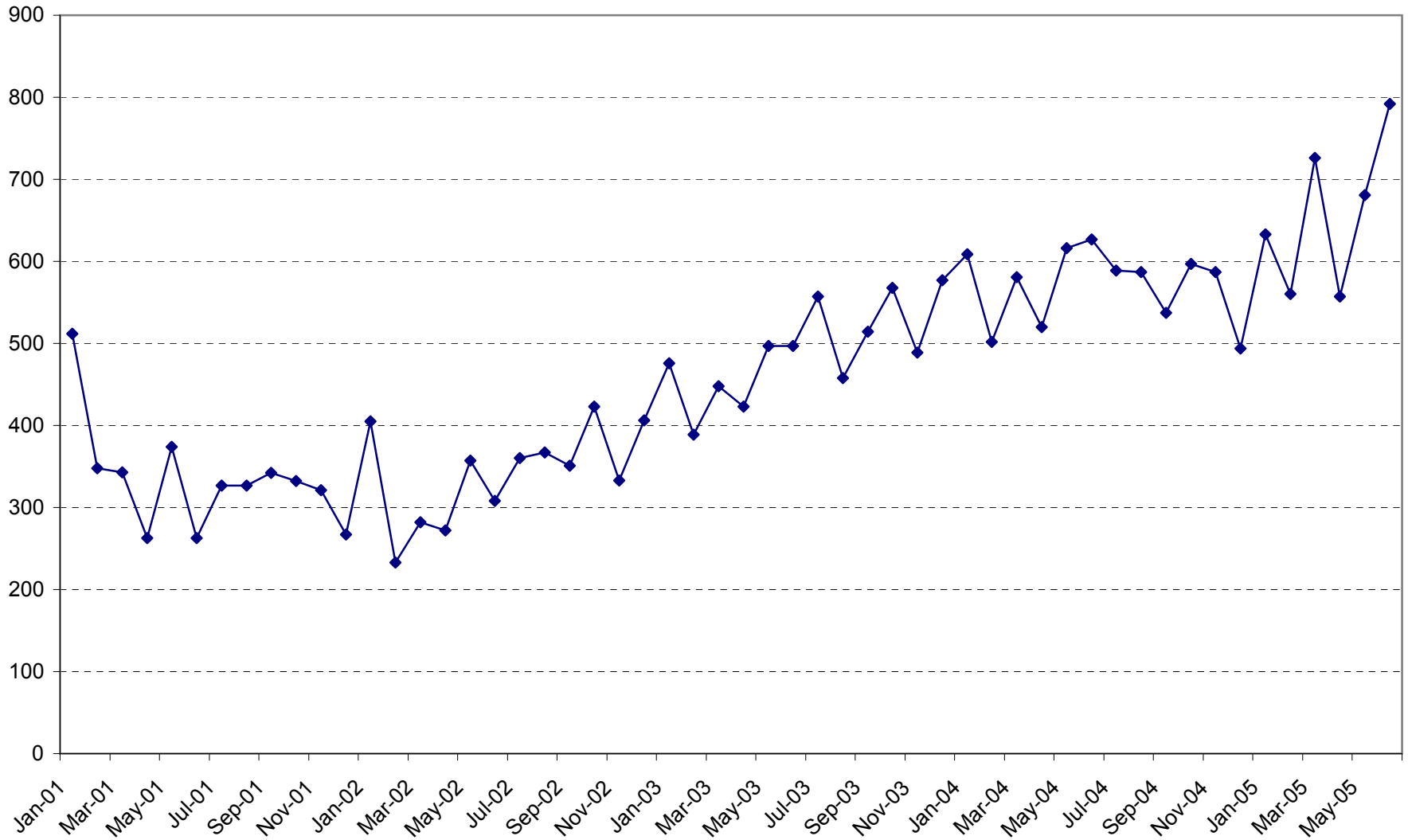
Median Age (in Days) of Pending Cases



Median Age (in Days) of Pending Cases: Homicide



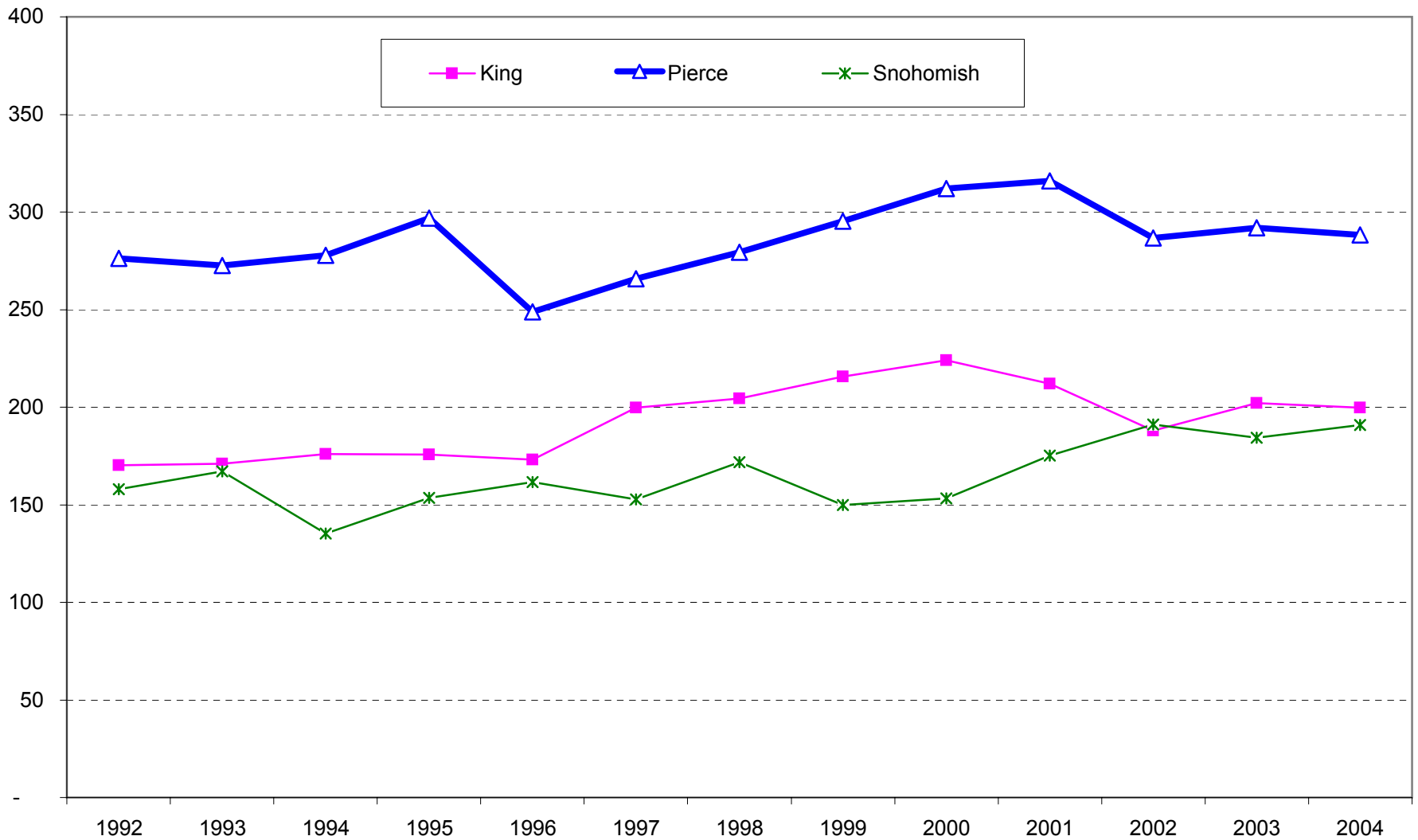
Criminal Case Continuances by Month since 2001



Source: Superior Court data, from LINX

Adult Criminal Filings per Judge, 1992 - 2004

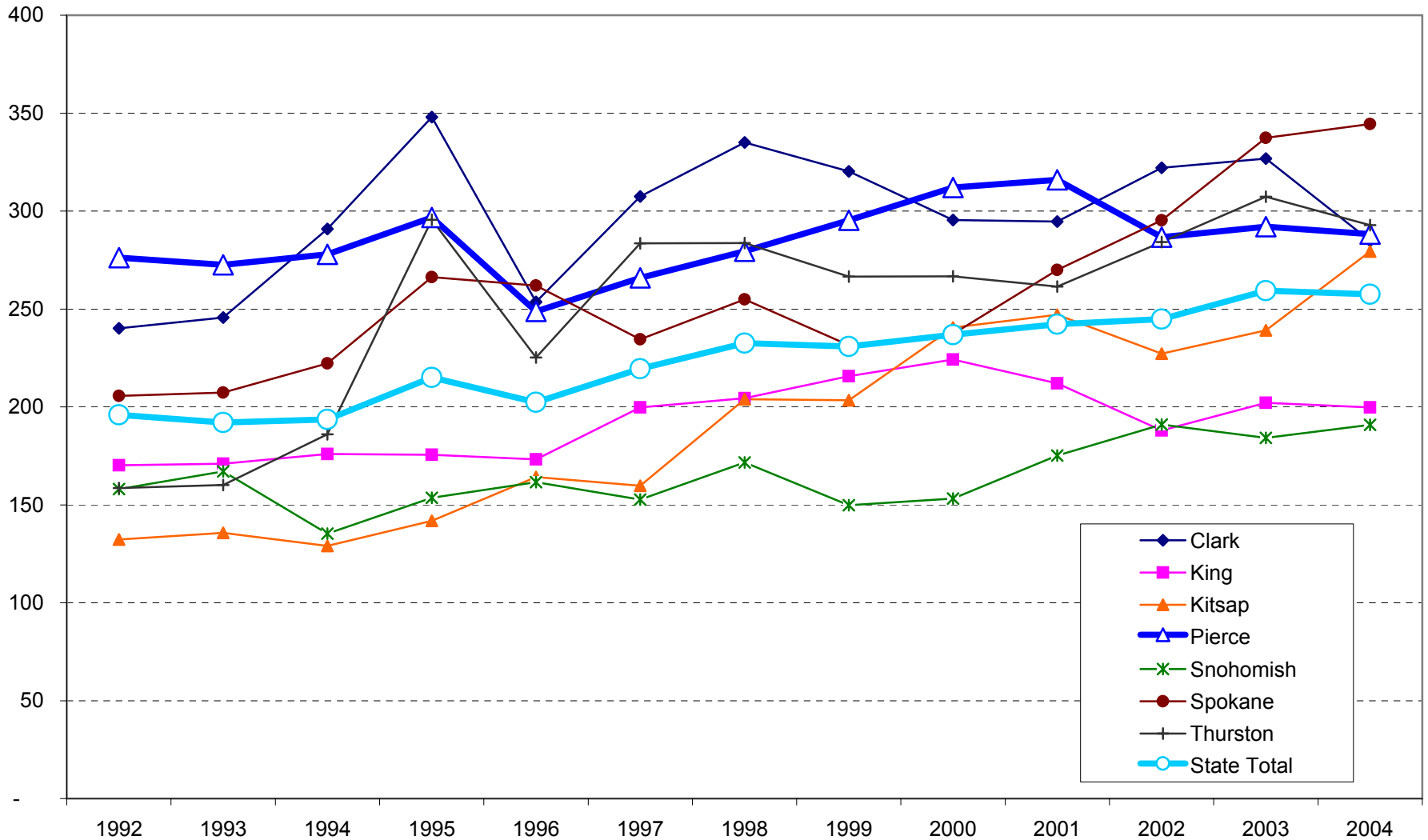
Three Largest Superior Courts



Source: State AOC annual caseload reports. Excludes "non-charge cases."

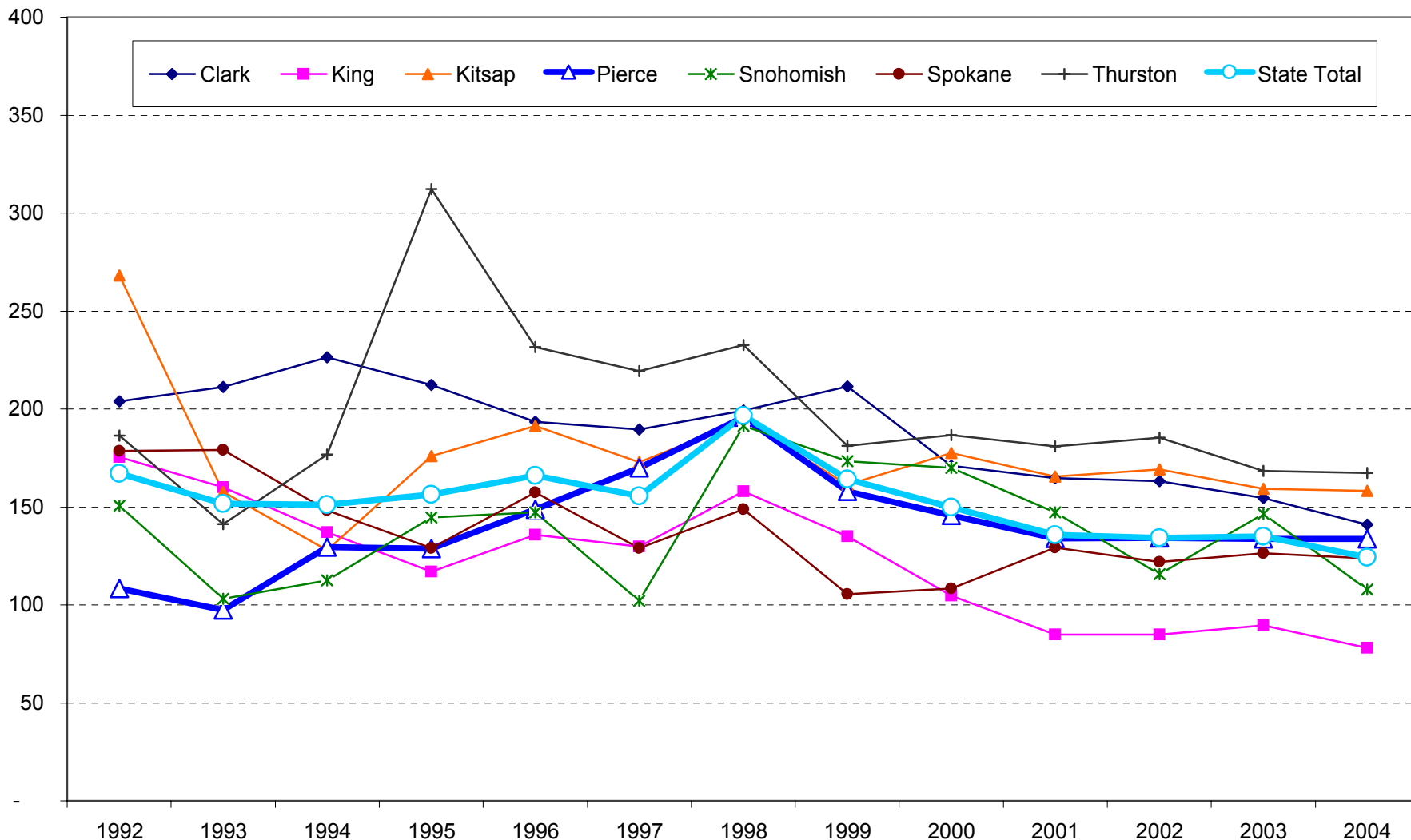
Adult Criminal Filings per Judge, 1992 - 2004

Seven Superior Courts



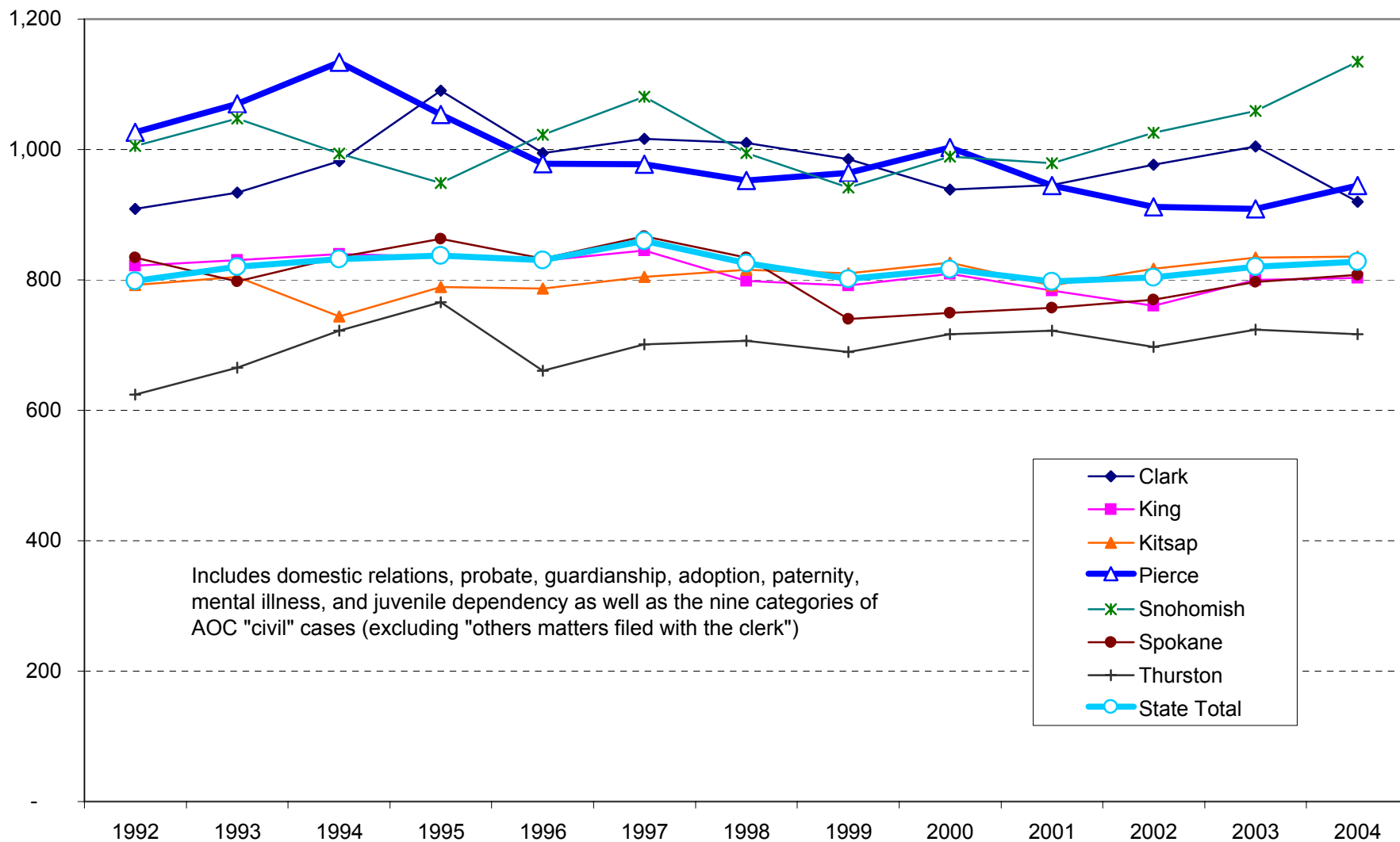
Source: State AOC annual caseload reports. Excludes "non-charge cases."

Juvenile Offender Filings per Judge, 1992 - 2004



Source: AOC annual caseload reports. Excludes "non-charge" cases.

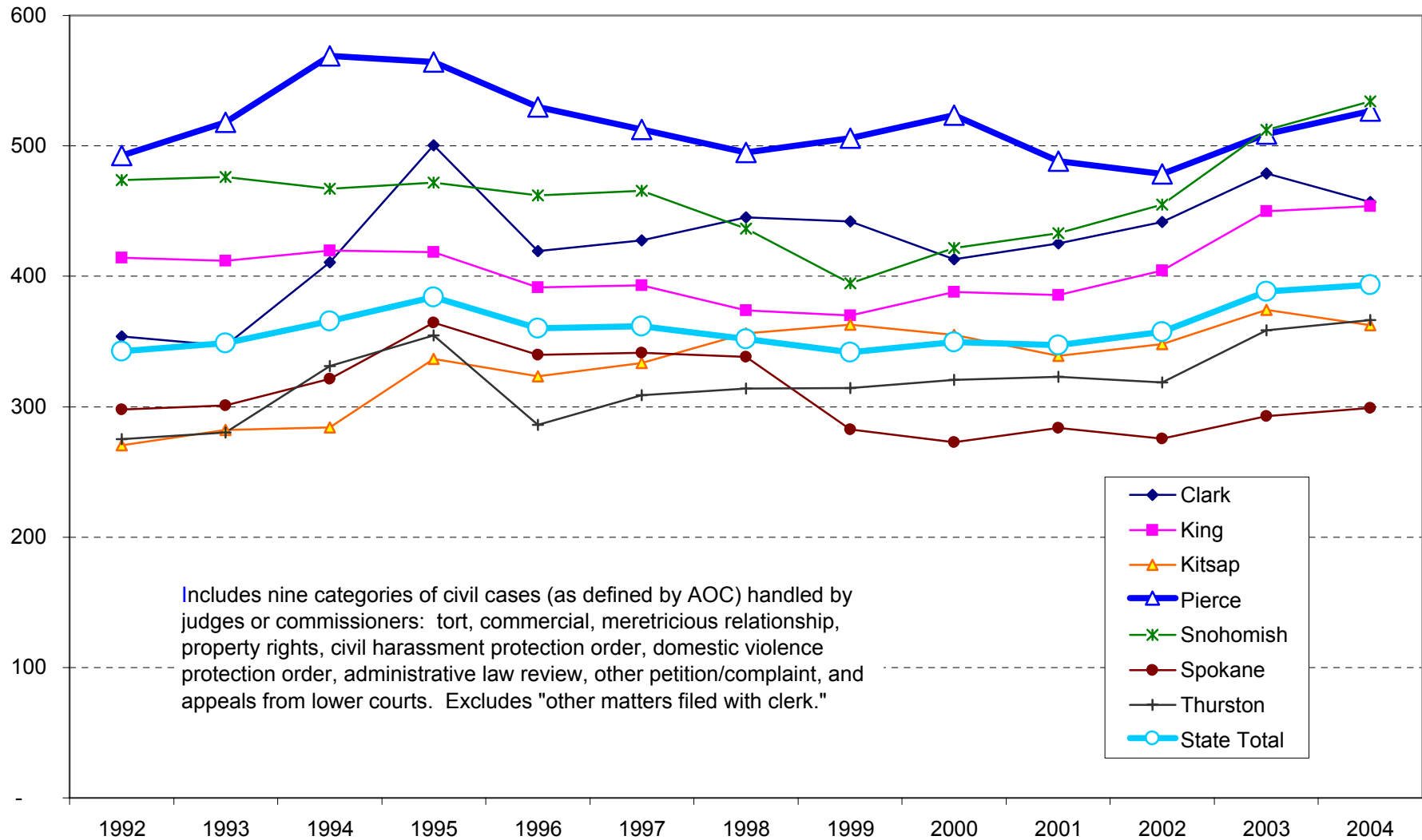
Civil Filings (all non-criminal cases) per Judicial Officer, 1992 - 2004



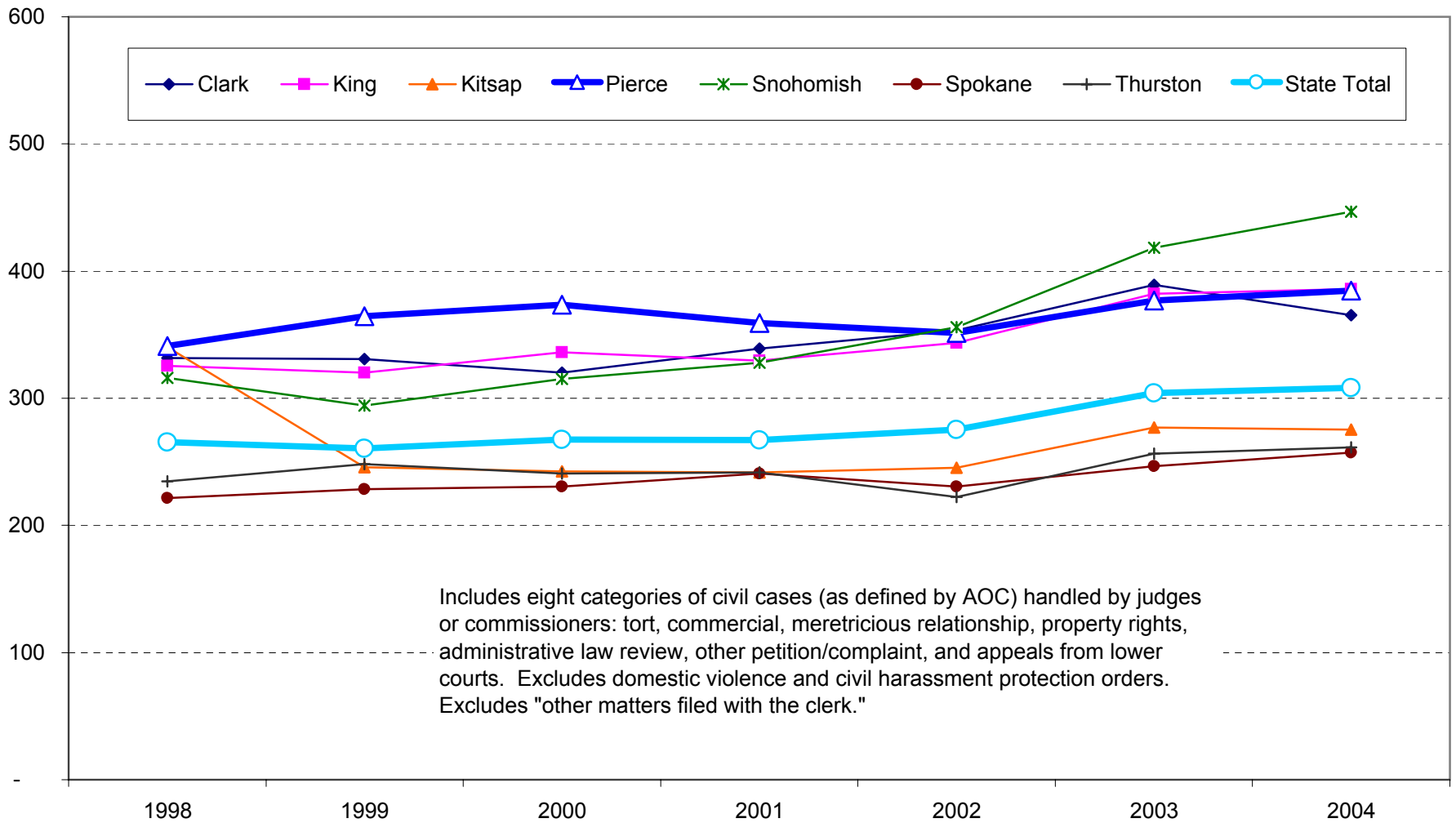
Source: AOC annual caseload reports

Civil Filings (type 2 cases) per Judicial Officer, 1992 - 2004

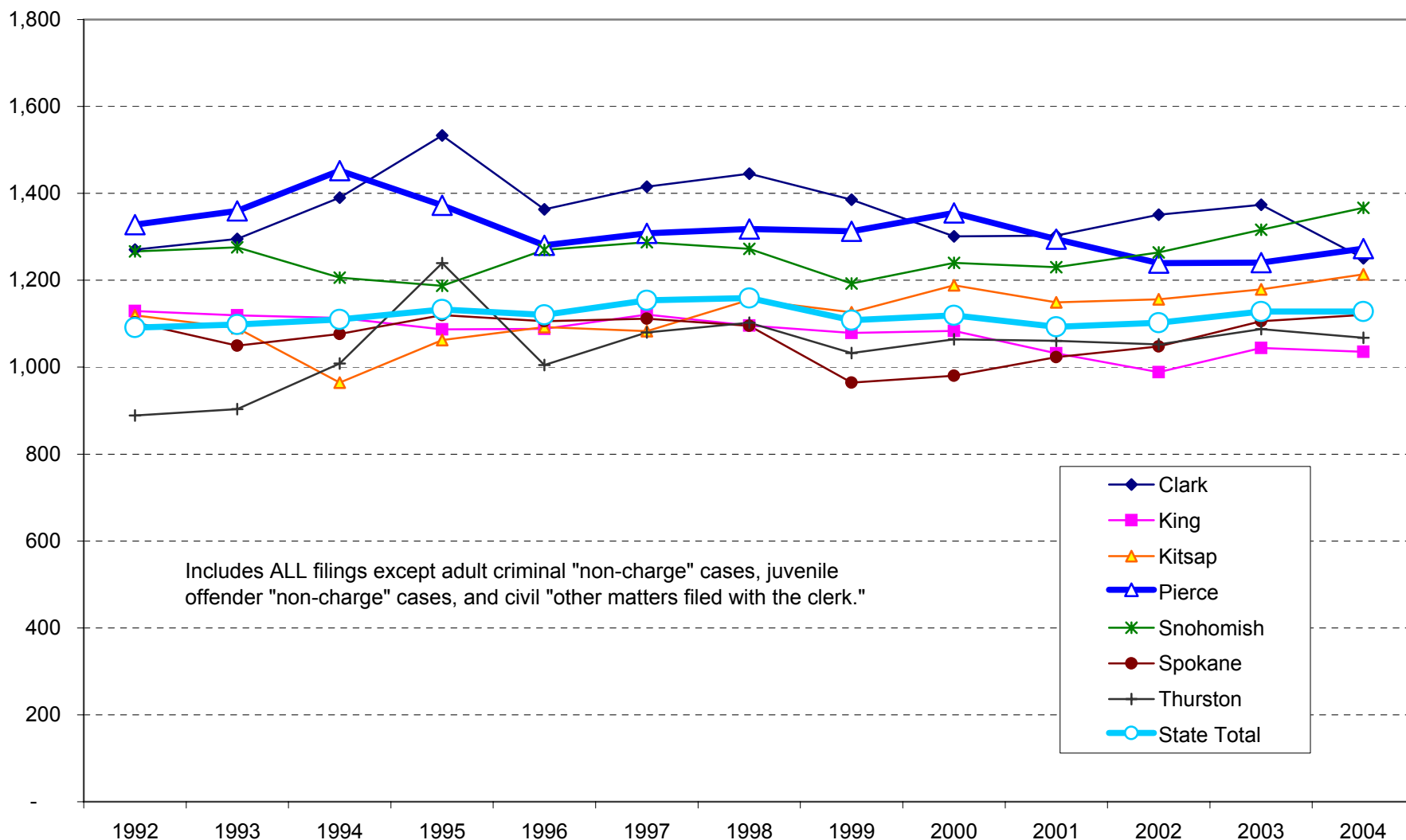
Seven Superior Courts



Civil Filings per Judicial Officer, excluding Domestic Violence and Civil Harassment Protection Orders

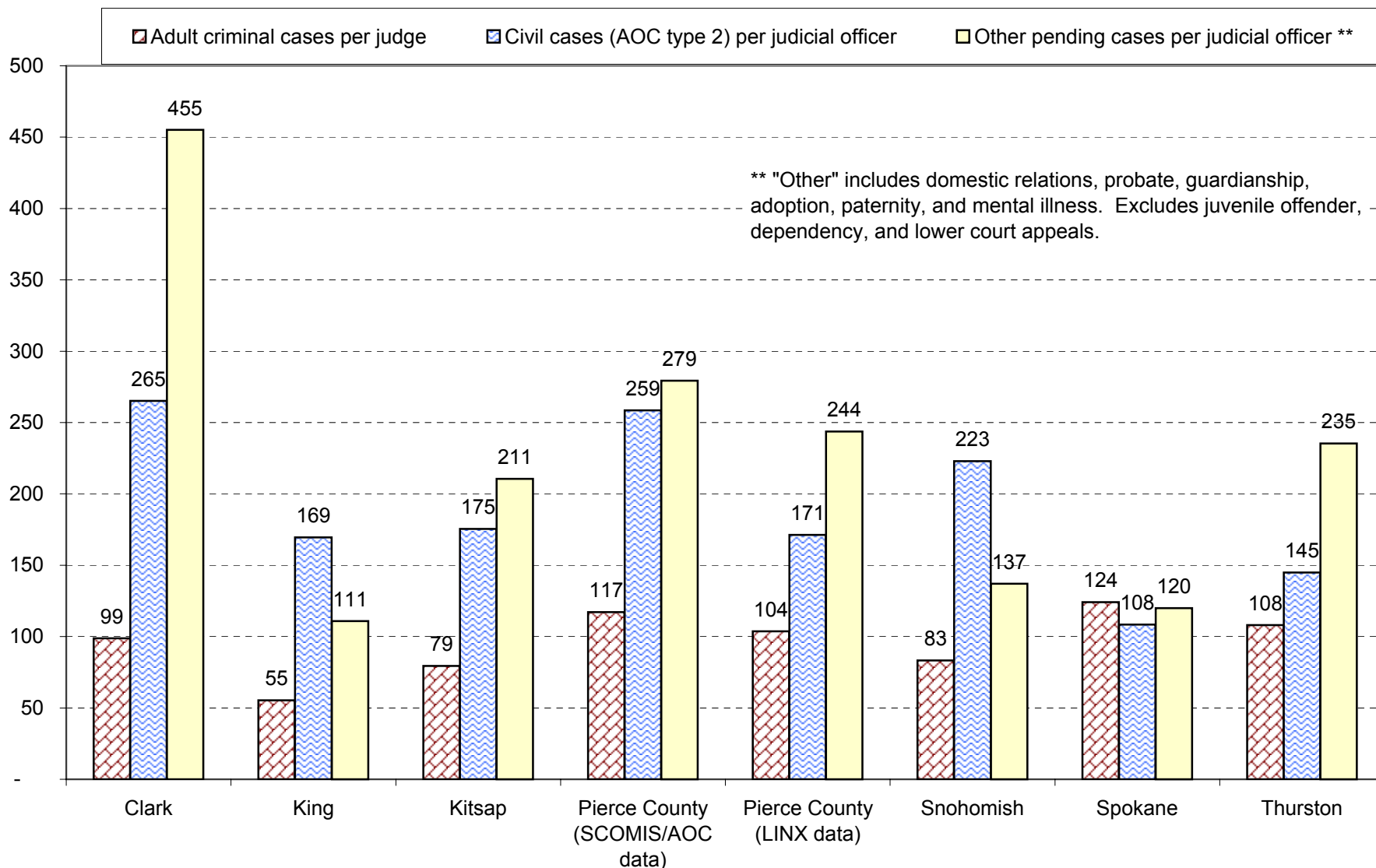


Total Filings per Judicial Officer, 1992 - 2004



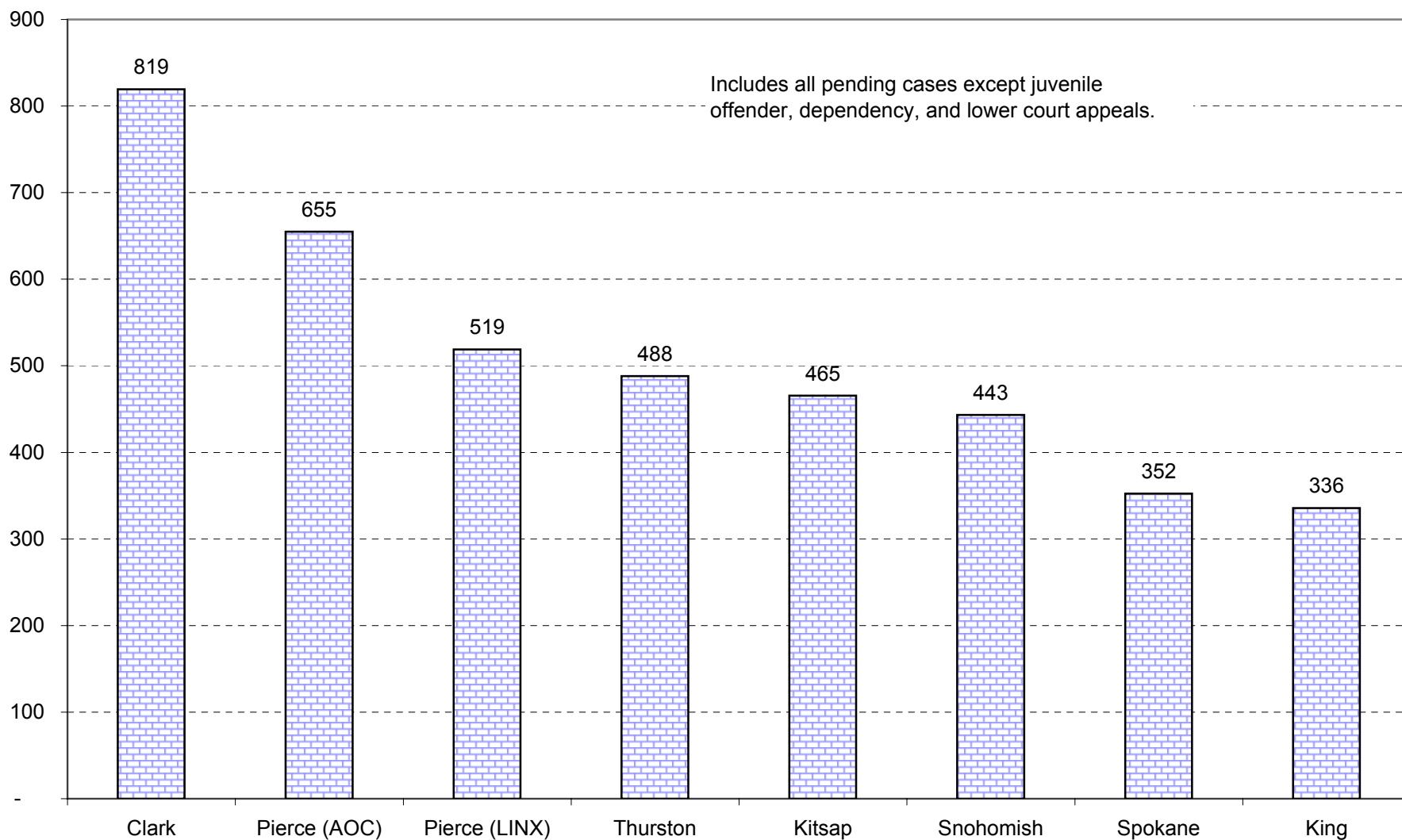
Data source: AOC annual caseload reports

Superior Court Pending Cases as of July 31, 2005



Data source: AOC Superior Court profiles, July 31, 2005, and LINX data from Pierce County Superior Court

Total Pending Cases per Judicial Officer, July 31, 2005



Data source: AOC Superior Court profiles and LINX data