

Final Report

Organizational Assessment of the
Pierce County Superior Court

February 15, 2001

Prepared by
Office of the Administrator for the Courts
PO Box 41170
Olympia, WA 98504-1170

Yvonne L. Pettus
Manager

TABLE OF CONTENTS

Executive Summary	1
A. Introduction	2
B. Workload Comparison	3
1. Filings.....	3
2. Resolutions	6
3. Resolutions per Judicial Officer.....	9
4. Clearance Rate	11
5. Time Standards Performance	13
6. Active Cases Pending Resolution	16
7. Trial Rates.....	19
8. Active Cases Pending Resolution over the 100% Standard	21
C. Organization and Staffing	24
1. Courtroom Staff.....	24
2. Administrative Staff.....	26
3. Staff per Case Resolution.....	29
4. Salary Comparison.....	31
D. Budget Comparison	32
1. Expenditure Comparison.....	32
2. Funding Comparison.....	35
E. Information Provided to Executive/Legislative Branch	37
F. Court Facilities	38
Appendices (Bound Separately)	
Appendix A Criminal Filings by Case Category.....	43
Appendix B Civil and Domestic Resolutions by Resolution Type.....	49
Appendix C Clearance Rate Trend Report	63
Appendix D JIS Case Management Reports.....	67
Appendix E Organizational Charts.....	73
Appendix F Job Descriptions for Judicial Assistants/Bailiffs	75
Appendix G Clark County Monthly Report to County Executive	77

EXECUTIVE SUMMARY

The Organizational Assessment of the Pierce County Superior Court is a broad-based comparison using high-level descriptive statistics. The report contains comparisons of workload, organization and staffing, expenditures and funding, management information shared with other branches of government, and facilities.

These comparisons serve the general purpose of providing background information regarding Pierce County Superior Court in relation to other courts of similar size in Washington State. These comparisons have limited utility and should not be used to inform decision-making regarding resource needs of the court.

The workload comparisons indicate that Pierce County Superior Court, as the second-largest superior court in the state, has the second-highest volume of cases. In most of the measures, Pierce County Superior Court performs comparably. However, the Court does show some backlogs in some of the case categories.

The organization and staffing area was the most complex to assess given the range of activities performed by the Pierce County Superior Court and the comparison courts. Attempts were made to standardize activities and eliminate those activities not performed by the Pierce County Superior Court staff. The analysis indicates Pierce County Superior Court has the lowest ratio of courtroom staff per judicial officer and the third lowest total staff per judicial officer. Pierce County Superior Court staff salaries for most positions are comparable with the comparison courts.

The expenditure and funding assessment shows that the Pierce County Superior Court, as expected, has the second-highest expenditures per judicial officer and per county resident. When the expenditures per resident are adjusted by county crime rate, however, Pierce County Superior Court drops to fifth. This indicates the Pierce County Superior Court receives less funding per resident despite the higher demand created by the higher crime rate.

The majority of the comparison courts do not provide management information to the County Council or County Executive on a regular basis. The Justice Management Institute report does provide an example of a management information report that will provide pertinent criminal justice information to the County Council and County Executive.

In the area of facilities, the Pierce County Superior Court has the second fewest courtrooms per judicial officer but the highest ratio of jury deliberation rooms per courtroom. The other features of the court facility are comparable with the other courts.

A. Introduction

Superior courts are courts of general jurisdiction. They handle felony criminal cases, juvenile matters, probate and domestic matters, and civil cases involving amounts over \$50,000. One of 39 superior courts, Pierce County Superior Court handles almost 13 percent of the workload statewide.

The Pierce Superior Court's 2000 budget is \$8,875,470 from county funds. In 1999, the state contributed \$1,273,457 for judges' salaries and benefits. Total staffing for the court is 87.38 full-time equivalents (FTEs), including 20 elected judges and 6 appointed court commissioners. In October 2000, the County Council approved funding for the twenty-first judge.

This document contains data regarding Pierce County Superior Court as well as comparative data for other superior courts in the state including Clark, King, Kitsap, Snohomish, Spokane, Thurston, and Yakima. Sources for the data include the Office of the Administrator for the Courts and the courts included in the comparison. Data were gathered through interviews with court administrators, clerks, court staff, and documents provided by the courts.

We appreciate the willingness of the comparison courts to share the time and information necessary to complete this task.

B. Workload Comparison

Eight categories of court workload were examined for Pierce County Superior Court and the seven comparison courts. All data are based on 1999 calendar year information and provide a snapshot of court workload for the year. Some trend data is provided in the appendices. All data were obtained from the Superior Court Management Information System (SCOMIS). Pierce County uses the Legal Information Network Exchange (LINX) system as well as SCOMIS for case processing but data from LINX were not used since the other comparison courts do not use the LINX system.

The eight indicators provide a useful cross-sectional view of court performance. The indicators are:

1. Filings,
2. Resolutions,
3. Resolutions per Judicial Officer,
4. Clearance Rate,
5. Time Standards Performance,
6. Active Cases Pending Resolution,
7. Trial Rates, and
8. Active Cases Pending Resolution over the 100% Standard.

Areas of court performance not included in these indicators are numbers of proceedings and post-resolution case activities. Proceedings and post-resolution case activities such as dependency reviews, domestic relations modifications, criminal probation violation hearings, guardian annual report hearings, etc. are not included because these data are not uniformly gathered or reported by the courts.

1. Filings

Case filings represent the input of the courts' workload. A filing is the initiation of a case in court by formal submission to the court of a document alleging the facts of a matter and requesting relief. Filings are grouped by type of case and are reported for the following categories: criminal, civil, domestic relations, probate/guardianship, adoption/paternity, mental illness/alcohol, juvenile dependency, truancy, and juvenile offender. A separate case filing occurs for each criminal and juvenile offender defendant. However, each unique mental illness/alcohol petition results in a unique case number which is reported as a single filing, no matter how many subsequent petitions are filed during the life of a case. A case reopened for subsequent adjudication after the initial judgment is not considered a new filing unless a new case number is assigned.

Table A below depicts case filings totaled by case type and shows them as a percentage of the court's total filings for 1999 for Pierce County Superior Court and the comparison courts. This table also presents a view of the court's mix of cases.

Table A
1999 Cases Filed by Case Type, and as a Percent of Total Cases Filed

	County								Average of Comparison Courts
	Pierce	Clark	King	Kitsap	Snohomish	Spokane	Thurston	Yakima	
Criminal ¹	5,927 16.9%	2,265 15.0%	10,574 14.5%	1,554 15.2%	2,279 9.2%	2,798 14.0%	2,142 18.7%	2,187 17.9%	3,400 14.9%
Civil ²	13,891 39.5%	6,207 41.2%	29,936 41.0%	3,844 37.5%	9,426 38.3%	7,435 37.2%	4,479 39.2%	3,429 28.1%	9,251 37.5%
Domestic Relations	4,240 12.1%	2,034 13.5%	8,732 11.9%	1,516 14.8%	3,262 13.2%	2,419 12.1%	1,527 13.4%	1,271 10.4%	2,966 12.8%
Probate / Guardianship	1,867 5.3%	837 5.6%	6,020 8.2%	838 8.2%	1,510 6.1%	1,530 7.7%	576 5.0%	685 5.6%	1,714 6.6%
Adoption / Paternity	1,854 5.3%	755 5.0%	3,235 4.4%	487 4.7%	1,165 4.7%	1,150 5.8%	470 4.1%	806 6.6%	1,153 5.1%
Mental Illness / Alcohol	1,455 4.1%	394 2.6%	1,916 2.6%	212 2.1%	614 2.5%	1,551 7.8%	214 1.9%	494 4.0%	771 3.4%
Juvenile Dependency	825 2.3%	308 2.1%	1,614 2.2%	337 3.3%	1,074 4.4%	756 3.8%	227 2.0%	395 3.2%	673 3.0%
Truancy	1,662 4.7%	723 4.8%	3,652 5.0%	224 2.2%	2,212 9.0%	830 4.2%	412 3.6%	1,095 9.0%	1,307 5.4%
Juvenile Offender ³	3,403 9.7%	1,527 10.1%	7,416 10.1%	1,242 12.1%	3,098 12.6%	1,497 7.5%	1,380 12.1%	1,858 15.2%	2,574 11.4%
TOTAL	35,124	15,050	73,095	10,254	24,640	19,966	11,427	12,220	23,807

¹ Criminal reporting categories are homicide, sex crime, robbery, assault, theft/burglary, motor vehicle theft, controlled substance, other felony, misdemeanor/gross misdemeanor, appeals from lower courts, and non-charges.

² Civil reporting categories include tort, commercial/collection, meretricious relationship, property rights, civil harassment, domestic violence, administrative law review, other petitions and complaints, appeals from lower courts, and matters filed with the clerk.

³ Juvenile offender reporting categories are homicide, sex crime, robbery, assault, theft/burglary, motor vehicle theft, controlled substance, other felony, misdemeanor/gross misdemeanor, and non-charges.

The case filing data in Table A reflect that Pierce County had the second highest number of filings among Washington superior courts, with three notable exceptions. First, Spokane County's mental illness filings are slightly higher due to their large regional coverage of involuntary treatment petitions. Second, total juvenile dependency filings in Snohomish County are higher than Pierce County's juvenile dependency filings. Finally, Snohomish County's truancy filings are higher than Pierce County's truancy filings. For these two case type exceptions, Pierce County ranks third in case filings statewide. Additionally, Pierce County has a higher percentage of filings in the criminal, civil, adoption/paternity, and mental illness/alcohol case categories than the average of the seven other comparison courts.

Over the past six years, Pierce County had the highest number of aggravated murder cases. Table B shows the number of aggravated murder filings for Pierce County and the comparison courts. A separate filing is reported for each defendant when the charging document is formally submitted. Thus, each criminal case number represents one defendant and is counted as a case filing when the case number is assigned.

**Table B
Aggravated Murder Filings**

	County							
	Pierce	Clark	King	Kitsap	Snohomish	Spokane*	Thurston	Yakima
1995	4	1	5	0	5	4	0	0
1996	5	3	4	0	3	4	2	0
1997	10	2	7	0	7	2	1	0
1998	13	1	2	2	1	3	0	0
1999	7	1	3	1	1	0	0	3
2000	4	1	3	0	2	3	0	0
TOTAL	43	9	24	3	19	16	3	3

* Data provided by the Spokane County Prosecutor's Office.

Appendix A includes a six-year trend of criminal filings by case category for Pierce County and the seven comparison courts. The filing trend for total criminal filings shows an upward trend from 1996 to 1999. Data through November 30, 2000 show a slight downward trend except in Kitsap County. Depending on the number of filings in the last month of 2000, the trend may remain downward or become flat. From 1995 through 1999, Pierce County experienced an 11.3 percent increase in criminal filings. Three other courts had higher percentage increases during this period. Kitsap County had a 47.2 percent increase, King County had a 24.8 percent increase and Snohomish County had a 16.8 percent increase.

In general these filing data indicate proportionally comparable demand for court resources among Washington's eight largest superior courts. Criminal and civil cases require more judicial time than the other case types. In these case types, Pierce County has a higher percentage of filings than six of these large comparison courts.

2. Resolutions

Case resolutions represent an important outcome of the courts' work. Resolution signifies that a case has been tried, settled, or otherwise concluded. It occurs when a judicial decision has been rendered or when a case has been transferred to another jurisdiction for subsequent adjudication. Each case results in only one resolution, reflecting the extent to which court resources were involved. As with filings, resolutions are reported in the categories of criminal, civil, domestic relations, probate/guardianship, adoption/paternity, mental illness/alcohol, juvenile dependency, truancy, and juvenile offender.

Table C depicts case resolutions totaled by case type and shows them as a percentage of the court's total resolutions for 1999 for Pierce County Superior Court and the comparison courts.

Paralleling the trend in case filings, Table C reveals that Pierce County had the second largest number of case resolutions among superior courts in each case category with the exception of juvenile dependency and truancy cases. Although the proportion of case resolutions in each type of case was comparable among these eight superior courts, in Pierce County, 58.2 percent of the total resolutions occurred in the criminal and civil case categories. Pierce County has a slightly higher percentage of these resource intensive cases. Additionally, Pierce County has a higher percentage of resolutions in the criminal, civil, adoption/paternity, and mental illness/alcohol case categories than the average of the seven other comparison courts. This is similar to the percentages of filings.

Table C
1999 Cases Resolved by Case Type, and as a Percent of Total Cases Resolved

	County								Average of Comparison Courts
	Pierce	Clark	King	Kitsap	Snohomish	Spokane	Thurston	Yakima	
Criminal*	5,752 17.3%	2,329 16.7%	10,481 14.4%	1,411 14.5%	2,333 9.7%	2,958 13.9%	2,060 18.6%	2,242 18.7%	3,402 15.2%
Civil	13,605 40.9%	5,645 40.4%	29,925 41.1%	3,451 35.5%	9,354 38.7%	8,355 39.2%	4,360 39.3%	3,310 27.7%	9,200 37.4%
Domestic Relations	4,230 12.7%	1,863 13.3%	8,756 12.0%	1,547 15.9%	3,270 13.5%	2,811 13.2%	1,533 13.8%	1,235 10.3%	3,002 13.2%
Probate / Guardianship	1,683 5.1%	660 4.7%	5,881 8.1%	802 8.3%	1,515 6.3%	1,518 7.1%	448 4.0%	677 5.7%	1,643 6.3%
Adoption / Paternity	1,673 5.0%	603 4.3%	3,451 4.7%	512 5.3%	1,110 4.6%	1,191 5.6%	378 3.4%	795 6.6%	1,149 4.9%
Mental Illness / Alcohol	1,442 4.3%	411 2.9%	1,877 2.6%	198 2.0%	639 2.6%	1,399 6.6%	197 1.8%	463 3.9%	741 3.2%
Juvenile Dependency	662 2.0%	324 2.3%	1,643 2.3%	291 3.0%	1,021 4.2%	706 3.3%	301 2.7%	343 2.9%	661 2.9%
Truancy	949 2.8%	670 4.8%	3,145 4.3%	224 2.3%	2,158 8.9%	622 2.9%	448 4.0%	1,001 8.4%	8,268 5.1%
Juvenile Offender	3,308 9.9%	1,458 10.4%	7,632 10.5%	1,283 13.2%	2,748 11.4%	1,744 8.2%	1,367 12.3%	1,904 15.9%	2,591 11.7%
TOTAL	33,304	13,963	72,791	9,719	24,148	21,304	11,092	11,970	23,570

* There is a definitional difference in case resolutions for drug court cases. In SCOMIS, which is the source of data used in this report, drug court cases are coded as resolved when the defendant enters the drug court program. In Legal Information Network Exchange (LINX), drug court cases are coded as resolved only after the defendant completes the drug court program, either successfully or unsuccessfully.

Appendix B includes a six-year trend of civil and domestic resolutions by type of resolution for Pierce County and the seven comparison courts. The resolutions are divided into two categories: resolutions not involving trial and resolutions after trial commencement.

In the civil case category, the number of resolutions not involving trial has remained relatively flat from 1995 to 1999 except in King, Spokane, and Clark Counties. The civil case resolutions after trial commencement have increased dramatically in Clark (108.3%), Pierce (44.2%), and Spokane (78.6%) Counties and decreased in King (-27.1%) and Yakima (-4.3%) Counties.

In the domestic relations category, the number of resolutions not involving trial decreased from 1995 to 1999 in every county except Thurston County. Pierce County had the largest reduction, dropping nearly 23 percent. The resolutions after trial increased in every county except Kitsap and Snohomish Counties. Pierce County's increase of 19.2 percent appears modest in comparison to the increases in Clark (94.7%), Thurston (64.5%), and Yakima (45.5%). Spokane's increase at 21.1 percent is most similar to Pierce County's increase.

3. Resolutions per Judicial Officer

The resolutions per judicial officer provide the court with a measure to ascertain the amount of work produced by each judicial officer. This measure is displayed in Table D for Pierce County Superior Court as well as the comparison courts.

The number of case resolutions per judicial officer provides a very general measure of the average work produced by judges and commissioners. Review of Table D indicates that Pierce County performs comparably to the other large superior courts in Washington in the criminal, civil, adoption/paternity, and mental illness/alcohol case categories. In the probate/guardianship, juvenile dependency, truancy, and juvenile offender case categories, Pierce County Superior Court judicial officers fall below median. Additionally, Pierce County Superior Court has higher numbers of resolutions per judicial officer than the average of the seven comparison courts in the criminal, civil, adoption/paternity, mental illness/alcohol, and all cases.

Table D
1999 Resolutions per Judicial Officer

	County (Number of Judicial Officers)								
	Pierce (26)	Clark (9.63)	King (59.75)	Kitsap (8.23)	Snohomish (18.57)	Spokane (18.43)	Thurston (9.43)	Yakima (10.29)	Average of Comparison Courts
Criminal*	287.6	332.7	213.9	201.6	166.6	246.5	294.3	280.3	187.3
Civil	523.3	586.2	500.8	419.3	503.7	453.3	462.4	321.7	463.9
Domestic Relations	162.7	193.5	146.5	188.0	176.1	152.5	162.6	120.0	162.7
Probate / Guardianship	64.7	68.5	98.4	97.4	81.6	82.4	47.5	65.8	77.4
Adoption / Paternity	64.3	62.6	57.8	62.2	59.8	64.6	40.1	77.3	60.6
Mental Illness / Alcohol	55.5	42.7	31.4	24.1	34.4	75.9	20.9	45.0	39.2
Juvenile Dependency	25.5	33.6	27.5	35.4	55.0	38.3	31.9	33.3	36.4
Truancy	36.5	69.6	52.6	27.2	116.2	33.7	47.5	97.3	59.9
Juvenile Offender	127.2	151.4	127.7	155.9	148.0	94.6	145.0	185.0	143.9
All Cases	1,280.9	1,449.9	1,218.3	1,180.9	1,300.4	1,155.9	1,176.2	1,163.3	1235.0

* Criminal resolutions per judicial officer are calculated per judge rather than per judicial officer since in 1999, commissioners were not allowed by statute to hear criminal matters. The number of judges used as the divisor is: Pierce (20), Clark (7), Kitsap (7), King (49), Snohomish (14), Spokane (12), Thurston (7), Yakima (8).

4. Clearance Rate

The clearance rate data in Table E reflect the ratio of cases resolved to cases filed in each case type, indicating the extent to which courts are preventing additional pending caseload backlog. Ideally a court should have a clearance rate equal to or greater than 1.0, which signifies static or diminishing case backlog.

The clearance rate data for Pierce County show the Court is below average in minimizing the court's total backlog. This finding is due in most part to the low clearance rate in the juvenile dependency and truancy case categories. The low clearance rate for truancy cases may be caused by the policy decision of the Pierce County Juvenile Court to not resolve truancy cases from one school year to the next. This anomaly should not be attributed to poor judicial performance. It is unclear why the clearance rate for juvenile dependency cases is lower than the other courts. Additionally, Pierce County has a lower clearance rate in every case category except mental illness/alcohol than the average of the seven other comparison courts.

All of the comparison courts have implemented case management practices that seek to adjudicate cases within the existing advisory case processing time standards. Within this group of courts, Pierce County has fared well overall, though the volume of incoming cases has exceeded their performance in adjudicating probate/guardianship and adoption/paternity cases.

Appendix C includes a five-year trend of clearance rates by type of case for Pierce County and the seven comparison courts. The five-year trend shows that in Pierce County, the clearance rate has improved in every case category except criminal, probate/guardianship, and adoption/paternity. The data indicate all the courts are in various stages or have tackled data quality initiatives in the past five years. The courts and county clerks have been active in pursuing case clean-up in various categories. The data in Appendix C show the results of those efforts.

Table E
1999 Clearance Rate

	County								
	Pierce	Clark	King	Kitsap	Snohomish	Spokane	Thurston	Yakima	Average of Comparison Courts
Criminal	0.970	1.028	0.991	0.908	1.024	1.057	0.962	1.025	0.999
Civil	0.979	0.909	1.000	0.898	0.992	1.124	0.973	0.965	0.980
Domestic Relations	0.998	0.916	1.003	1.020	1.002	1.162	1.004	0.972	1.011
Probate / Guardianship	0.901	0.789	0.977	0.957	1.003	0.992	0.778	0.988	0.926
Adoption / Paternity	0.902	0.799	1.067	1.051	0.953	1.036	0.804	0.986	0.957
Mental Illness / Alcohol	0.991	1.043	0.980	0.934	1.041	0.902	0.921	0.937	0.965
Juvenile Dependency	0.802	1.052	1.018	0.864	0.951	0.934	1.326	0.868	1.00
Truancy	0.571	0.927	0.861	1.000	0.976	0.749	1.087	0.914	0.931
Juvenile Offender	0.972	0.955	1.029	1.033	0.887	1.165	0.991	1.025	1.012
All Cases	0.948	0.928	0.996	0.948	0.980	1.067	0.971	0.980	0.981

5. Time Standards Performance

In the early 1980's the concept of case processing time standards by which trial courts could gauge their performance began to develop. The Conference of State Court Administrators (COSCA) adopted standards in 1983 followed by the American Bar Association (ABA) in 1984. In 1989, the Board for Judicial Administration (BJA) formed the Case Processing Time Standards Committee. The committee reviewed the standards developed by COSCA, ABA, and 31 other states and developed standards which address the particular needs of the courts in Washington State. In 1992 the BJA endorsed case processing time standards for general and limited jurisdiction courts. In 1997 BJA formed another Case Processing Time Standards Committee to examine the standards set for superior courts. This committee endorsed the previously adopted standards with the exception of the domestic relations standard which was lengthened by four months.

These advisory time standards provide target goals for the expeditious and timely processing of cases. The filing-to-resolution standards are based on the date of case filing to the date of case resolution (i.e., all case issues tried, settled, or otherwise concluded), after eliminating any time in which the case was in an "inactive" status¹, such as out on warrant or on discretionary appeal. The following filing-to-resolution standards indicate the length of time that it should take in resolving 90 percent, 98 percent, and 100 percent of superior court cases. Those case categories with asterisks do not have formal case processing time standards, but employ proxy values agreed upon by the Case Management Advisory Committee.

	90%	98%	100%
Civil	12 months	18 months	24 months
Criminal	4 months	6 months	9 months
Domestic Relations	10 months	14 months	18 months
Probate	8 months	18 months	36 months
Guardianship *	8 months	18 months	36 months
Adoption / Paternity *	8 months	10 months	14 months
Mental Illness / Alcohol *	8 months	10 months	14 months
Juvenile Dependency *	8 months	10 months	14 months
Juvenile Offender	4 months	6 months	9 months
Lower Court Appeal	4 months	5 months	6 months

* Time standards have not been adopted for these categories. Proxies are used to measure performance. For guardianship cases, the probate time standard is used as the proxy. For adoption/paternity, mental illness/alcohol, and juvenile dependency cases, the pre-1997 domestic relations standard is used as the proxy.

Table F, based on cases resolved in 1999, indicates the percentage of cases in each comparison court that met the 90th and 100th percentile case processing time standards. Both standards reflect important goals for the expeditious adjudication of cases. Failure to attain the 90 percent standard informs the court of potential areas in need of monitoring and improvement. Failure to attain the 100 percent standard informs the court and the public the court is not processing its cases in a timely manner.

Pierce County Superior Court's performance in the timely adjudication of cases is similar to the comparison courts. Despite the case management practices employed at these larger superior

¹ Inactive statuses include: warrant, mediation, stay/discretionary review, arbitration, appeal, continued for deferred prosecution, and diversion.

courts, most jurisdictions only attained the 90 percent standard in four of the ten case categories. On average, these superior courts only reached the 100 percent standard in one of ten case categories.

Pierce County fared better than average in civil and domestic relations case processing performance among these comparison courts. However, performance in the criminal, guardianship, adoption/paternity case categories indicates the court is not keeping pace with the time standards and needs to examine its case management practices in these areas. Performance in the lower court appeal area is substantially below standard for all these courts, indicating a need to examine causes for excessive delay in case processing.

**Table F
1999 Time Standards Performance**

Standard	County															
	Pierce		Clark		King		Kitsap		Snohomish		Spokane		Thurston		Yakima	
	90%	100%	90%	100%	90%	100%	90%	100%	90%	100%	90%	100%	90%	100%	90%	100%
Criminal	76.9	93.1	79.1	97.3	81.5	96.0	91.2	99.2	75.1	93.7	71.3	93.9	83.7	96.2	72.7	89.7
Civil	88.6	97.0	93.4	97.5	88.3	98.8	82.9	96.9	83.4	95.9	74.5	91.4	89.9	95.23	85.7	96.1
Domestic Relations	76.3	89.7	76.8	88.7	84.0	98.2	65.6	88.5	64.4	88.9	50.9	71.4	75.2	91.0	61.5	80.2
Probate	99.3	99.7	99.8	100	98.9	99.7	99.0	99.6	99.6	100	99.2	99.9	95.2	96.0	99.6	99.8
Guardianship	75.9	92.1	99.3	99.3	92.8	99.3	89.9	100	86.1	97.1	92.6	98.3	91.5	100	84.2	98.3
Adoption / Paternity	72.7	89.1	83.2	92.9	72.2	90.0	82.1	85.4	78.5	88.2	68.2	78.3	84.9	94.4	80.5	90.2
Mental Illness / Alcohol	99.9	100	65.7	78.8	99.8	100	100	100	96.9	99.2	100	100	100	100	99.1	99.4
Juvenile Dependency*	91.3	98.5	60.1	72.0	87.5	89.9	83.4	94.7	87.8	96.1	74.0	84.4	77.6	87.3	96.8	98.0
Juvenile Offender	93.3	97.3	98.2	99.6	93.9	98.8	91.6	95.5	94.5	99.6	75.4	85.1	96.6	98.6	95.1	98.9
Lower Court Appeal	22.0	33.3	14.3	28.6	24.5	36.9	54.2	81.3	31.4	47.6	26.0	33.1	8.2	20.4	34.5	41.4

*Excludes truancy cases

6. Active Cases Pending Resolution

Another useful indicator of court backlog is the rate of active unresolved pending cases to the number of cases resolved, where lower percentages indicate a smaller backlog. For example, if at the end of a year, a court has 1,000 active cases pending resolution and during the year the court resolved 2,000 cases, the court would have a 50 percent backlog for that year.

Table G displays the active cases pending resolution as of December 31, 1999 divided by the number of cases resolved in 1999 and the percent the active cases pending resolution comprise of the cases resolved in 1999 by case category. As a note of caution, cases pending resolution may not actually be pending resolution depending on data entry practices and case clean-up efforts undertaken by particular courts.

Pierce County ranks highly in the relatively small percent of active civil cases pending resolution, second only to King County Superior Court. Table H displays the six-year trend for active civil cases pending resolution. From 1995 to 1999, Pierce County experienced a decrease of 7.6 percent in the number of active civil cases pending resolution. Clark (-22.4%), Spokane (-31.7%), Thurston (-23.7%), and Yakima (-1.3%) also showed decreases in this area. Among other case management practices employed, the proactive assignment of civil cases to differentiated case management tracks and schedules may account for these positive results.

Although the percent of active domestic relations cases pending resolution to those resolved in 1999 is about average, in most other case categories Pierce County has the highest or second highest percentage of active cases pending resolution. This may be an indication that the Court is falling behind in adjudicating most of the case types. Table I displays the six year trend for active domestic relations cases pending resolution. During the time period of 1995 through 1999, Pierce County showed a decrease of 26 percent in the number of active domestic relations cases pending resolution. All of the comparison courts except Clark and Snohomish Counties experienced decreases over the same time period.

Table G
1999 Active Cases Pending Resolution as a Percent of Cases Resolved

	County							
	Pierce	Clark	King	Kitsap	Snohomish	Spokane	Thurston	Yakima
Criminal	1,804/5,752 (31.9%)	590/2,329 (25.7%)	1,984/10,481 (18.9%)	330/1,411 (23.9%)	573/2,333 (25.2%)	668/2,958 (22.9%)	619/2,060 (30.5%)	783/2,242 (35.1%)
Civil	4,640/13,605 (34.2%)	3,520/5,645 (62.7%)	9,972/29,925 (33.6%)	1,535/3,451 (44.4%)	3,592/9,426 (38.6%)	2,414/7,435 (32.5%)	1,860/4,479 (42.8%)	1,289/3,429 (39.0%)
Domestic Relations	3,110/4,230 (73.5%)	2,185/1,863 (117.2%)	4,452/8,756 (50.8%)	1,010/1,547 (65.0%)	2,482/3,270 (75.8%)	2,106/2,811 (74.8%)	950/1,533 (61.7%)	1,014/1,235 (82.1%)
Probate	329/1,419 (23.2%)	414/514 (80.5%)	386/4,969 (7.8%)	47/714 (6.6%)	18/1,306 (1.4%)	24/1,287 (1.9%)	235/401 (58.9%)	28/557 (5.0%)
Guardianship	518/264 (196.2%)	117/146 (80.1%)	334/912 (36.6%)	60/88 (68.2%)	61/209 (29.2%)	66/231 (28.6%)	33/47 (70.2%)	44/120 (36.7%)
Adoption / Paternity	2,559/1,673 (153.0%)	743/603 (123.2%)	1,435/3,451 (41.6%)	224/512 (43.7%)	631/1,110 (56.8%)	719/1,191 (60.4%)	380/378 (100.5%)	499/795 (62.8%)
Mental Illness / Alcohol	29/1,442 (2.0%)	159/411 (38.7%)	82/1877 (4.4%)	34/198 (17.2%)	21/639 (3.3%)	32/1,399 (2.3%)	27/197 (13.7%)	25/463 (5.4%)
Juvenile Dependency*	2,247/1,611 (139.5%)	645/994 (64.9%)	2,087/4,788 (43.6%)	417/515 (80.9%)	925/3,179 (29.1%)	896/1,328 (67.5%)	188/749 (25.1%)	447/1,344 (33.3%)
Juvenile Offender	3,903/3,308 (118.4%)	149/1,458 (10.2%)	1,187/7,632 (15.6%)	147/1,283 (11.5%)	690/2,748 (25.1%)	315/1,744 (18.0%)	353/1,367 (25.8%)	172/1,904 (9.0%)
Lower Court Appeal	195/150 (130.0%)	41/56 (73.2%)	664/738 (90.0%)	25/48 (52.0%)	57/105 (54.3%)	35/125 (28.0%)	44/49 (89.8%)	39/29 (134.5%)

* Excludes truancies

Table H
Active Civil Cases Pending Resolution, 1995 – 2000*

	County							
	Pierce	Clark	King	Kitsap	Snohomish	Spokane	Thurston	Yakima
1995	4,941	4,457	9,430	1,153	3,312	3,432	2,417	1,236
1996	5,050	2,230	9,759	1,169	3,215	3,435	1,860	1,164
1997	4,463	2,724	9,292	1,154	3,447	4,001	1,899	1,178
1998	4,385	2,951	9,815	1,170	3,509	3,350	1,818	1,177
1999	4,564	3,458	10,025	1,228	3,503	2,345	1,844	1,220
Percent Change 1995-1999	-7.6%	-22.4%	6.3%	6.5%	5.8%	-31.7%	-23.7%	-1.3%
2000*	4,360	3,800	11,433	1,318	3,605	2,157	1,641	1,332

* Through 11/30/2000

Table I
Active Domestic Relations Cases Pending Resolution, 1995 – 2000*

	County							
	Pierce	Clark	King	Kitsap	Snohomish	Spokane	Thurston	Yakima
1995	4,146	1,451	4,768	1,558	2,255	2,263	1,123	1,415
1996	3,965	1,655	4,770	1,226	2,360	2,362	1,029	1,013
1997	3,205	1,887	4,385	1,140	2,533	2,778	1,046	959
1998	3,114	2,012	4,574	1,054	2,479	2,543	958	995
1999	3,068	2,058	4,424	1,020	2,446	2,040	934	978
Percent Change 1995-1999	-26.0%	41.8%	-7.2%	-34.5%	8.5%	-9.9%	-16.8%	-30.9%
2000*	2,778	1,863	4,750	1,081	2,595	2,092	935	1,027

* Through 11/30/2000

7. Trial Rates

The trial rate is the number of trials held per 100 resolutions and is displayed for criminal and civil cases. Trial rates are calculated for non-jury and jury trials as well as a total for these case types. A higher trial rate indicates more court resources are needed to achieve case resolutions since resolutions by trial require more judicial and staff time. Table J displays the trial rates by case type and trial type.

Pierce County's criminal and civil trial rates are comparable to the comparison courts, despite the somewhat greater variation observed among criminal cases. The relatively high criminal non-jury trial rate in some of the counties may be due to drug court stipulated trial resolutions.

**Table J
1999 Trial Rates**

	County								
	Pierce	Clark	King	Kitsap	Snohomish	Spokane	Thurston	Yakima	Average of Comparison Courts
Criminal									
Non-Jury	2.4%	0.4%	3.0%	0.8%	3.9%	1.4%	4.2%	0.9%	2.1%
Jury	3.4%	2.5%	4.8%	3.3%	6.2%	4.2%	4.0%	2.7%	4.0%
Total Criminal	5.8%	2.9%	7.8%	4.0%	10.2%	5.6%	8.2%	3.5%	6.1%
Civil									
Non-Jury	0.7%	0.9%	0.7%	0.7%	0.8%	1.4%	2.6%	0.9%	1.1%
Jury	0.7%	0.6%	0.7%	0.8%	0.8%	0.8%	0.9%	0.7%	0.8%
Total Civil	1.5%	1.5%	1.4%	1.4%	1.5%	2.1%	3.5%	1.6%	1.9%

8. Active Cases Pending Resolution over the 100% Standard

Table K provides another view of the timeliness in processing cases among these comparison courts. For each case category, the number of active cases that exceed the 100 percent standard is displayed, as well as the median number of months over the standard, and the ratio of these aged cases to judicial officers in each court. As a note of caution, cases pending resolution may not actually be pending resolution depending on data entry practices and case clean-up efforts undertaken by particular courts.

In ranking the number of excessively aged pending cases per judicial officer, Pierce County fared below average in all ten case categories. They have the highest number of aged cases per judicial officer in probate, guardianship, adoption/paternity, juvenile dependency, juvenile offender, and lower court appeal cases. Although the number of cases is small relative to the volumes of cases filed and resolved each year, the size and age of these active pending caseloads indicates a need for improvement.

The median ages of active cases over the 100 percent standard were higher in Pierce County than among most comparison courts, and were the highest in adoption/paternity, mental illness, juvenile dependency, juvenile offender, and lower court appeal cases.

Table K
1999 Active Cases Pending Resolution over 100% Standard (N)
(Median Number of Months over the 100% Standard, Number of Cases per Judicial Officer)

		Pierce (26)	Clark (9.63)	King (59.75)	Kitsap (8.23)	Snohomish (18.83)	Spokane (18.43)	Thurston (9.43)	Yakima (10.29)
Criminal*	N	373	39	284	53	87	11	94	238
	Median	8.6	6.9	5.3	12.6	6.6	3.7	6.5	6.7
	N/Jud. Off.	14.3	4.2	4.8	6.6	4.8	0.6	10.3	23.8
Civil	N	531	1478	371	94	396	186	527	193
	Median	15.6	27.1	9.6	7.8	8.3	8.1	14.9	10.4
	N/Jud. Off.	20	159	6	12	22	10	58	19
Domestic Relations	N	559	836	188	91	283	347	66	116
	Median	17.5	20.3	7.0	8.1	5.3	6.6	8.1	7.8
	N/Jud. Off.	22	90	3	11	16	19	7	12
Probate	N	117	10	62	0	2	2	8	4
	Median	17.2	6.3	24.9	0	161.4	49.0	7.6	13.1
	N/Jud. Off.	4.5	1.1	1.0	0	0.1	0.1	0.9	0.4
Guardianship	N	185	39	4	1	2	1	5	2
	Median	29.2	228.9	4.8	0.7	49.1	15.5	5.0	22.8
	N/Jud. Off.	7	4	0.1	0.1	0.1	0.1	0.5	0.2
Adoption/Paternity	N	1477	336	136	32	162	177	155	154
	Median	27.9	10.1	5.3	8.1	18.5	11.2	9.8	12.8
	N/Jud. Off.	57	36	2	4	9	10	17	15
Mental Illness/Alcohol	N	10	1	32	17	0	0	6	0
	Median	27.4	4.3	3.8	3.6	0	0	13.5	0
	N/Jud. Off.	0.4	0.1	0.5	2	0	0	0.7	0
Juvenile Dependency	N	579	86	316	82	16	150	37	16
	Median	38.4	12.5	25.2	10.5	3.1	23.3	35.9	9.4
	N/Jud. Off.	22	9	5	10	1	8	4	2
Juvenile Offender	N	3201	11	65	52	28	26	134	6
	Median	30.1	27.0	6.3	3.5	1.6	6.7	20.3	12.4
	N/Jud. Off.	123	1	1	6	2	1	15	0.6
Lower Court Appeal	N	144	16	400	6	23	14	26	14
	Median	17.1	5.0	7.1	5.6	2.8	1.4	5.4	10.7
	N/Jud. Off.	6	2	7	0.7	1	0.8	3	1

* Criminal resolutions per judicial officer are calculated per judge rather than per judicial officer since in 1999, commissioners were not allowed by statute to hear criminal matters. The number of judges used as the divisor is: Pierce (20), Clark (7), Kitsap (7), King (49), Snohomish (14), Spokane (12), Thurston (7), Yakima (8).

In conclusion, this comparison involved an examination of Washington's eight largest superior courts on an equal number of high-level workload and performance indicators. While there is likely not a more appropriate set of Washington general jurisdiction courts with which to compare Pierce County Superior Court, there are substantial differences in the size of these courts, the complexity of their operations, the influences of their local legal cultures, and the judicial philosophies of their independently elected judges. Any difficulty in comparing courts that lack a high degree of homogeneity is compounded by the general nature of the measures used to assess court workload and performance.

Given this vantage point, it appears that Pierce County Superior Court performs comparably when compared to other courts for many of the measures. It is the second largest superior court in the state with twenty judges and six full-time commissioners as of year-end 1999, which is consistent with the 1999 caseload and case management data used in this assessment. The demand for court resources and the case resolution output is commensurate with its stature as the second largest superior court in Washington. While the Pierce County Superior Court has made efforts to minimize the extent of increasing case backlog, the result has been mixed. In the civil and mental illness/alcohol case categories, the Pierce County Superior Court has relatively small backlogs. However, in the other case categories, the backlogs are larger than the comparison court's backlogs. Addressing these backlogs needs thoughtful consideration by the bench and court administration to develop a plan to ameliorate this problem.

All of the superior courts included within this review could realize improved timeliness in case processing performance. It is recommended that the use of Judicial Information System (JIS) case management reports, and any related tools developed in the Legal Information Network Exchange (LINX) system, be incorporated into ongoing case management efforts at the Pierce County Superior Court. These reports should serve as a valuable aid in diagnosing caseload problems within the court, and in evaluating case management interventions. Appendix D contains samples of the JIS case management reports.

The assignment of civil cases to an appropriate schedule at the point of filing, and for domestic relations cases which appear likely to go to trial, is a constructive application of differentiated case management. It is likely that this tool has been beneficial in addressing the significant incoming workload, and in accomplishing the timely resolution of cases. It is recommended that case schedules be considered for other appropriate causes of action, and that various case management techniques be evaluated for potential implementation within the Pierce County Superior Court.

C. Organization and Staffing

Pierce County Superior Court has 20 judges and 6 court commissioners. These 26 judicial officers are supported by 20 judicial assistants; 20 court reporters; 1 courtroom clerk, who reports to the superior court administrator; 6 courtroom clerks, who report to the county clerk; and 2 courtroom clerks who report to the juvenile court administrator.. The superior court administrative staff consists of: one court administrator, one deputy court administrator, twelve legal assistants, one interpreter coordinator, two department information technology specialists, and one accounting assistant. Organizational charts for Pierce County Superior Court and the other comparison courts can be found at Appendix E.

1. Courtroom Staff

Table L displays the Court's complement of judges' personal staff and county clerk courtroom staff along with the staff for the six comparison courts. Judges' personal staff category is defined as staff who work directly for the judge. This includes court reporters and judicial assistants. The judicial assistants' duties, depending on the county, may involve work in the courtroom or activities such as case management and scheduling. The county clerk courtroom staff category is defined as those county clerk staff who provide direct support on a daily basis in the courtroom.

Pierce County Superior Court has the lowest ratio of courtroom/personal staff per judicial officer of the seven superior courts included in the comparison data. The average courtroom staff per judicial officer among the comparison courts is 2.39. Pierce County Superior Court only has 1.88 courtroom staff per judicial officer. The Court is the only court in the state that does not use county clerk staff for courtroom clerk functions in all superior court courtrooms. In Pierce County, the courtroom clerk functions are performed by the judicial assistants except for eight county clerk/juvenile court positions. The eight county clerk/juvenile court positions staff the commissioner courtrooms, one of the criminal division courtrooms, the courtroom at Western State Hospital, and two courtrooms at juvenile court. Additionally, the judicial assistants in Pierce County Superior Court perform the bailiff/personal assistant functions performed in the other courts by the individuals designated above as "Bailiffs/Law Clerks/Judicial Assistants". Job descriptions for these individuals are provided in Appendix F.

Table L
Personal/Courtroom Staff Comparison, 1999

	Pierce	Clark	King	Kitsap	Snohomish	Spokane	Thurston	Average of Comparison Courts
Judges	20	7	49	7	14	12	7	
Commissioners	6	2.63	10.75	1.23	4.83	6.43	2.43	
TOTAL	26	9.63	59.75	8.23	18.83	18.43	9.43	20.72
Court Reporters	20	0	39	7	12	11	7	
Judicial Assistants	20	0	0	0	0	0	0	
Bailiffs/Law Clerks/Judicial Assistants		7	49	0	14	12	5	
Crim. Div. Admin. Clerk	1	0	0	0	0	0	0	
County Clerk/Juvenile Ct. Ctrm Clerks	8	13	64.5	10	23.5	18	14	
TOTAL	49	20	152.5	17	49.5	41	26	51
Courtroom Staff per Judicial Officer	1.88	2.08	2.55	2.07	2.63	2.22	2.76	2.39

2. Administrative Staff

Table M displays the Court's complement of administrative staff along with the comparable administrative staff for the six comparison courts. Since the functions performed by the comparison superior court administrative offices varies widely between the comparison courts, the functions performed by the Pierce County Superior Court staff were used as the base.

Pierce County Superior Court has the third lowest total staff per judicial officer ratio of the seven courts. In the administrative staff per judicial officer category, the Pierce County Superior Court ranks third highest. The comparison courts average 0.71 administrative staff per judicial officer whereas, Pierce County only has 0.69 administrative staff per judicial officer. In total staff per judicial officer, the comparison courts average 3.1 staff per judicial officer while Pierce County only has 2.58 staff per judicial officer.

**Table M
Administrative Staff Comparison, 1999**

	Pierce	Clark	King	Kitsap	Snohomish	Spokane	Thurston	Average of Comparison Courts
Court Administrator	1	1	1	1	1	1	1	
Deputy Court Administrator	1		2		1	1		
Jury Staff	2	1	6		1	2	1	
Interpreter Staff	1		5					
Accounting	1	0.5	10	1	1	1		
Computer Support	2		8		1			
Family Law Staff	2.4		7			3	1	
Scheduling	4	1.5	25	1	3	1.5	3	
Office Manager	0.1	0.25		1			1	
Receptionist	2	0.5	6		1	1	2	
Facility Manager	1		2					
Human Resources	0.5		5					
TOTAL ADM. STAFF	18	4.75	77	4	9	10.5	9	19.0
Administrative Staff per Judicial Officer	0.69	0.49	1.29	0.49	0.48	0.57	0.95	0.71
TOTAL STAFF	67	24.75	229.5	21	58.5	51.5	35	70
Total Staff per Judicial Officer	2.58	2.57	3.84	2.55	3.11	2.79	3.71	3.1

In the comparison courts, staff performing the following functions were not included in the above analysis since the duties they perform are not performed by Pierce County Superior Court staff: law clerk, judicial secretary, family court services, arbitration, courthouse facilitator, juvenile court services, pretrial investigator, drug court manager, and security. The following describes these functions in the various courts.

- In two superior courts, Kitsap and Thurston, law clerks are available to review briefs on motions and conduct research for the judicial officers.
- In Kitsap County, the superior court judicial officers share a judicial secretary who performs clerical tasks for the judges. In Pierce County, these functions are performed by the judicial assistants, in addition to their other duties.
- In Clark, King, Snohomish, and Thurston counties, several staff perform family court services functions, including parenting investigations, CASA coordination, and social work in the area of family law.
- In King, Snohomish, and Spokane counties, staff from the superior court administrator's office manage the mandatory arbitration program. In Pierce County, this program is managed by the county clerk's office.
- In King and Spokane counties, the courthouse facilitators are included in the superior court staffing complement as opposed to the remainder of the counties where they are included in the county clerk's office staff.
- In King and Spokane counties, several staff perform juvenile court services functions, including providing facilitator services for BECCA case participants, and juvenile offender probation supervision.
- In Kitsap County, there is one employee who performs pre-arraignment and pre-sentence investigation work as well as monitoring superior court adult misdemeanor probation offenders.
- Thurston County has one employee who manages the drug court program and three employees who provide security for the courtrooms as well as front door screening for the two court facilities. The drug court program manager conducts pre-screening evaluations for each applicant, determines appropriate treatment, and monitors the compliance and progress of each participant's treatment in addition to the grant and program management activities required of a program manager.

3. Staff per Case Resolution

In Table C, resolutions per judicial officer were provided for all case types. In Table N, resolutions per judicial officer as well as resolutions per staff are displayed.

The number of case resolutions per staff provides a very general measure of the average work produced by staff. Case resolutions per staff is an important measure since staff perform a valuable role by ensuring cases can be resolved by scheduling cases, arranging for interpreters, recording court proceedings, etc. Pierce County Superior Court has the second highest criminal and civil resolutions per staff as well as per judicial officer.

The comparison courts average 60.5 criminal resolutions per staff while Pierce County staff contribute to 85.9 criminal resolutions per staff. Similarly, in civil cases, the Pierce County staff contribute to 203.1 civil resolutions per staff while the comparison courts average only 161.6 civil resolutions per staff.

Table N
1999 Resolutions per Judicial Officer and Staff*

	County							
	Pierce	Clark	King	Kitsap	Snohomish	Spokane	Thurston	Average of Comparison Courts
Criminal resolutions per judicial officer	221.2	241.8	175.4	171.4	125.6	160.5	218.5	182.2
Criminal resolutions per staff	85.9	94.1	45.7	67.2	39.9	57.4	58.9	60.5
Civil resolutions per judicial officer	523.3	586.2	500.8	419.3	503.7	453.3	462.4	487.6
Civil resolutions per staff	203.1	228.18	130.4	164.3	159.9	162.2	124.6	161.6

* Number of staff includes administrative staff and courtroom/personal staff included in Tables I and J regardless of the entity who employs them.

4. Salary Comparison

Table O displays a salary range comparison for the courtroom and administrative staff. In courts that have multiple staff performing the same functions, the salary level represented on the chart attempts to represent the level most similar to the responsibility level of the staff person in Pierce County responsible for that function.

Table O
1999 Staff Salary Range Comparison

	Pierce	Clark	King	Kitsap	Snohomish	Spokane	Thurston
Court Administrator	67,740-91,400	53,544-75,636	100,394	56,014-71,489	67,312-95,119	48,164-64,990	72,000
Deputy Court Administrator	46,082-62,226		67,048-84,154		55,411-78,298	36,414-49,136	
Jury Staff	26,426-32,978	20,196-25,788	35,943-45,671		34,729-42,228	29,085-39,247	27,060-37,020
Interpreter Staff	43,571-55,819		44,611-65,761				
Accounting	36,473-46,228		47,955-61,040	19,626-26,296	39,434-47,920	26,321-35,516	
Computer Support	38,730-52,471		42,515-54,080		43,429-52,836		
Family Law Staff	26,426-32,978		37,706-47,928			30,575-41,257	34,608-47,280
Scheduling	26,426-32,978	28,416-36,300	29,699-37,684	25,691-34,436	34,729-42,228	30,575-41,256	29,928-40,860
Office Manager	34,325-43,425			31,817-42,637			32,928-45,000
Receptionist	25,134-31,395	27,396-34,920	25,162-31,879		28,717-34,924	21,555-29,085	25,764-35,208
Facility Manager	26,426-32,978		29,699-37,684				
Court Reporters	52,471		52,150	41,766-53,289	45,607-64,450	44,460	47,604
Judicial Assistants	41,077-52,471	27,396-34,920	32,667-41,481		32,430	23,232-31,348	29,928-40,860

Salary ranges for the Pierce County Superior Court Administrator are comparable to the other courts. The Deputy Court Administrator's salary range is lower than the ranges for the other courts. The other staff salary ranges are either comparable or slightly on the low side.

D. Budget Comparison

1. Expenditure Comparison

Using 1999 expenditures, Table P displays comparative expenditure data for Pierce County Superior Court and the six comparison courts.

The comparative data are displayed as total expenditures, expenditures per judicial officer, expenditures per staff, expenditures per resident, and expenditures per resident adjusted by the crime rate. To normalize the data, the expenditure data has been adjusted by the Part One crime rate². The Part One crime rate includes murder, non-negligent manslaughter, rape, robbery, aggravated assault, burglary, theft, motor vehicle theft and arson. Using the Pierce County crime rate as the base, the other county's crime rates were normalized to the Pierce County crime rate and then divided by the expenditures per county resident.

Using "funding per county resident" as a comparison performance measure without adjustment implies that it is appropriate to fund all courts at the same level without regard for local differences in crime rate. Those differences are totally outside the control of the court, but they significantly influence their workload in the form of criminal filings and criminal trials.

Those counties with above average crime rates will require more judges and higher levels of funding per county resident even if the court is otherwise performing exactly the same as its peer courts in counties with lower crime rates.

Although "filings per county resident" is a possible proxy variable for differences in crime rates, it also reflects differences in prosecutor strategy over which the court has no control and which may change at any time.

The uniqueness of the court, compared to executive branch agencies, with regard to this class of performance measures is important and underscores the necessity of involving persons knowledgeable about court business processes. Typically, other agencies have relatively constant rates of service demand across geographical units. For example, the number of garbage pickup requests or the number of driver's licenses per county resident will be quite uniform. Thus, equivalent adjustments need not be made.

² Based on Washington Association of Sheriffs and Police Chiefs 1999 Annual Report

Table P
1999 Expenditure Comparison

	Pierce	Clark	King	Kitsap	Snohomish	Spokane	Thurston	Average of Comparison Courts
County Expenditures*	\$8,379,940	\$1,983,395	\$20,605,035	\$2,036,963	\$5,658,018	\$3,733,193	\$2,580,192	\$6,099,466
State Expenditures**	\$1,614,956	\$446,368	\$3,242,472	\$533,196	\$896,522	\$1,018,487	\$817,022	\$1,159,011
Other Expenditures***	\$326,206		\$1,915,218	\$300	\$36,352	\$72,319	\$25,500	\$409,938
TOTAL EXPENDITURES	\$10,321,102	\$2,429,763	\$25,762,725	\$2,570,459	\$6,590,892	\$4,823,999	\$3,422,714	\$7,600,092
Expenditures per Judge	\$516,055	\$347,109	\$525,770	\$367,208	\$470,778	\$402,000	\$488,959	\$433,637
Expenditures per Judicial Officer	\$396,965	\$252,312	\$431,175	\$312,328	\$350,021	\$261,747	\$362,960	\$328,424
Expenditures per Total Staff	\$154,046	\$98,172	\$112,256	\$122,403	\$112,665	\$93,670	\$97,792	\$106,160
Expenditures per Resident	\$14.74	\$7.21	\$15.36	\$11.19	\$11.30	\$11.64	\$16.89	\$12.26
County Crime Rate	62.0	36.0	62.5	40.3	36.9	60.3	38.3	45.72
Expenditures per Resident adjusted by crime rate	\$14.74	\$12.42	\$15.24	\$17.22	\$18.99	\$11.97	\$27.33	\$17.19

* Includes salary and benefit expenditures for county clerk and juvenile court staff who provide courtroom support.

** Includes the state's portion of judge's salaries and benefits and state monies received for child support reimbursement and institutional impacts. It does not include state contribution for arbitration, pro tem judges, criminal costs.

*** Includes in Pierce County reimbursements for jury expenses from district court, municipal courts, drug court grant. King County's other expenditures include items such as family court service fees, adoption home study fees, facilitator surcharge fees, and family court grants. The other expenditures in Snohomish County include family court fees and a guardianship monitoring grant. Spokane County's other expenditures include facilitator program fees and surcharges. The other expenditures in Thurston County include a drug court grant and mental health services.

To ensure the expenditure data is comparable across courts, adjustments were made in the following areas.

- For Pierce County Superior Court, jury and interpreter expenditures related to services provided to the district and municipal courts were not included. Drug court pass through expenditures and OAC computer grant expenditures were also not included.
- For Clark County Superior Court, salary and benefit expenditures for the Family Law Investigator and 0.75 secretary were not included in the expenditures. Also not included were expenditures for arbitrator fees (since these are handled by the Clerk's Office in Pierce County) and for expert witnesses in domestic relations cases. Added into the Clark County Superior Court expenditures were superior court interpreter and GAL expenditures. These expenditures are included in the district court and indigent defense budget, respectfully.
- For Kitsap County Superior Court, salary and benefit expenditures for the three law clerks, one judicial secretary, and one pretrial investigator were not included in the expenditures. Also not included in the expenditure data for Kitsap County were expenditures for expert witness fees and counsel for indigent parties in guardianship and paternity cases. Added into the Kitsap County Superior Court expenditures were the jury expenditures that are part of the Clerk's budget.
- For King County Superior Court, salary and benefit expenditures for family court services staff, arbitration staff, courthouse facilitators, and juvenile court services as well as other expenditures related to these programs were not included.
- For Snohomish County Superior Court, salary and benefit expenditures for family court services and arbitration staff were not included. Also not included were expenditures for arbitrator fees (since these are handled by the Clerk's Office in Pierce County), for expert witness fees, and expert witnesses in domestic relations cases.
- For Spokane County Superior Court, salary and benefit expenditures for the courthouse facilitator, arbitration program staff, and juvenile court services staff were not included. Also not included were expenditures for arbitrator fees (since these are handled by the Clerk's Office in Pierce County), for expert witness fees, for counsel in child support contempt cases, and for court ordered evaluations.
- For Thurston County Superior Court, salary and benefit expenditures were not included for the drug court program manager, the law clerk, the CASA program manager, and the three security officers. Also not included were expenditures for arbitrator fees (since these are handled by the Clerk's Office in Pierce County), for expert witness fees, for counsel in child support contempt cases, for safe to be at large evaluations, and for other court ordered evaluations.

The expenditure and funding data show that the Pierce County Superior Court has the second-highest expenditures per judicial officer and per county resident. When the expenditures per resident are adjusted by county crime rate, however, Pierce County Superior Court drops to fifth. This indicates the Pierce County Superior Court receives less funding per resident despite the higher demand created by the higher crime rate.

2. Funding Comparison

Superior courts are generally funded from the county general fund with some funding provided by the state and other sources such as grants, etc. Table Q provides a summary of the funding sources of Pierce County and the comparison courts. The data indicate that the superior courts rely on between 70 to 85 percent of their funding from the county general fund. The state primarily makes up the difference in the funding with a few courts supplementing funding from federal grants or revenue generated by providing services for which users pay.

**Table Q
1999 Court Funding Comparison**

	Pierce	Clark	King	Kitsap	Snohomish	Spokane	Thurston	Average of Comparison Courts
County General Fund (% of Total)	81.2%	81.6%	80.0%	79.2%	85.8%	77.4%	75.4%	79.9%
State (% of Total)	15.6%	18.4%	12.6%	20.7%	13.6%	21.1%	23.9%	18.4%
Other (% of Total)	3.2%	0%	7.4%	0.01%	0.6%	1.5%	0.7%	1.7%
TOTAL DOLLARS	\$10,321,102	\$2,041,217	\$25,762,725	\$2,570,459	\$6,590,892	\$4,823,999	\$2,827,800	\$7,600,092

E. Information Provided to Executive/Legislative Branch

The comparison courts were surveyed regarding management information that is regularly provided to the county executive and legislative branch officials.

Pierce

The Pierce County Superior Court does not provide information to the County Executive or County Council on a regular basis. The Time Standards report is provided on a quarterly basis. The Presiding Judge attends County Council meetings on a regular basis to report on the court's status.

Clark

The Clark County Superior Court provides a monthly report to the county executive. The report contains information regarding caseload data (filings and resolutions), jury management, arbitration, settlement conferences and family court activities. The Court also provides a status report on the indigent defense contracts. A sample of the report can be found in Appendix G.

King

The King County Superior Court does not provide information to the County Executive or County Council on a regular basis. The Court does however involve Council or Executive staff in court projects and information is exchanged on the project level.

Kitsap

The Kitsap County Superior Court meets with County Commissioners and/or the County Administrator when a new program or change that requires additional funding is proposed. The Court Administrator meets frequently on an informal basis with the budget director. No formal information is provided on a regular basis, however.

Snohomish

Quarterly, the Snohomish County Superior Court sends to the County Executive the Time Standards Report. The County Executive publishes this report in his quarterly report to the County Council. The Court Administrator meets twice a month with the other department heads and the County Executive. The Court Administrator also meets once a month with the Executive Director (a third tier analyst in the County Executive's office) assigned to the superior court.

Spokane

The Spokane County Superior Court does not provide information to the County Commissioners on a regular basis.

Thurston

The Thurston County Superior Court does not provide information to the County Executive or County Commissioners on a regular basis.

F. Court Facilities

The comparison courts were surveyed regarding court facilities. Table R contains a summary of each court's facilities and is followed by a description.

Pierce

The court has facilities in two main locations: the City-County Building and the juvenile court building. The court also hears civil commitment hearings at Western State Hospital, Puget Sound Behavioral Health, and Veteran's Administration Hospital. In the City-County Building, there are 22 courtrooms, averaging 1,390 square feet. There are 25 judicial chambers, averaging 276 square feet. There are 16 jury deliberation rooms, averaging 376 square feet. In the juvenile court building, there are 3 courtrooms and 3 chambers.

In the City-County Building, there is 3,660 square feet of space allocated for administrative staff and staff support functions. This equals 203 square feet per staff person.

Clark

The court has facilities in two main locations: the courthouse and the juvenile court building. In the courthouse, there are seven courtrooms, averaging 1,343 square feet. Six of the courtrooms have adjacent jury deliberation rooms, staff offices and judges chambers. The seventh courtroom is the arraignment courtroom and has adjacent chamber and staff office. In the juvenile court building, there are two courtrooms.

King

The court has facilities in three main locations: the downtown Seattle Courthouse, the Regional Justice Center in Kent, and the juvenile court building. The court also hears civil commitment hearings at Harborview Hospital. In the downtown courthouse, there are 41 courtrooms, averaging 1,300 square feet. There are 41 judicial chambers, averaging 400 square feet, which includes work space for the bailiff. There are 35 jury deliberation rooms, averaging 400 square feet. At the Regional Justice Center, there are 22 courtrooms, averaging 1,500 square feet. There are 22 judicial chambers, averaging 500 square feet, some of which include space for the bailiff and judicial assistant. There are 16 jury deliberation rooms, averaging 400 square feet. At the juvenile court building, there are 6 courtrooms and 6 chambers.

In the downtown Seattle courthouse, there is approximately 29,000 square feet of space allocated for administrative staff and staff support functions. This equals 250 square feet per staff person. At the Regional Justice Center, there is about 17,000 square feet of space allocated for administrative staff and staff support functions. This equals 300 square feet per person.

Table R
1999 Court Facilities Comparison

	Pierce	Clark	King	Kitsap	Snohomish	Spokane	Thurston	Average for Comparison Courts
Judicial Officers	26	9.63	59.75	8.23	18.83	18.43	9.43	
Courtrooms	25	9	69	9	19	16	10	
Avg. SF Ctrms	1,390	1,343	1,400	1,025	1,422	962	1,264	1,236
Ctrm/Jud Offr	0.96	0.93	1.2	1.1	1.01	0.87	1.06	1.03
Jud. Chambers	28		69	8	19	18	10	
Avg SF Chambers	276		425	240	373	286	347	334
Chmbr/Jud Off	1.08		1.2	0.97	1.01	0.98	1.06	1.04
Jury Rooms	16	6	50	4	12	7	4	
Avg SF Jury Rooms	376		400	337	375	367	259	348
Jury Room/Ctrm	0.64	0.67	0.72	0.44	0.63	0.44	0.40	0.55
Admin Staff Space	3,660		47,000	843	735	4,305	2,277	
Avg SF per Staff	203		270	94	105	287	152	182
Jury Assembly	2,316		8,200			2,700	0	
Conference Rm	2		7	2,185	2	1	2	
Atty Client Rooms	8		37	2			7	
Holding Cells			18			0	2	

Kitsap

The court has facilities in two main locations: the courthouse and the Youth Services Center. In the courthouse, there are seven courtrooms and space for the Court Administrator and staff. In the Youth Services Center there are two courtrooms. In the courthouse, there are 7 courtrooms, averaging 1,025 square feet. There are 8 judicial chambers, averaging 240 square feet. There are 4 jury deliberation rooms, averaging 337 square feet.

In the courthouse, there is 843 square feet of space allocated for administrative staff and staff support functions. This equals 94 square feet per staff person.

Snohomish

The court has facilities in two main locations: the courthouse and the juvenile court building. The court also hears civil commitment hearings in three off-site locations: Mukilteo E & T, Stevens Memorial Hospital, and Valley General Hospital. In the courthouse, there are 16 courtrooms, averaging 1,422 square feet. There are 19 judicial chambers, averaging 373 square feet. There are 12 jury deliberation rooms, averaging 375 square feet. In the juvenile building, there are three courtrooms.

In the courthouse, there is 735 square feet of space allocated for administrative staff and staff support functions. This equals 105 square feet per staff person.

Spokane

The court has facilities in two main locations: the courthouse and the juvenile court building. The court also hears civil commitment hearings at Eastern State Hospital and Sacred Heart Medical Center. In the courthouse, there are 13 courtrooms, averaging 962 square feet. There are 18 judicial chambers, averaging 286 square feet. There are 7 jury deliberation rooms, averaging 367 square feet. In the juvenile court building, there are three courtrooms and space for administrative staff. An additional courtroom is under construction in the juvenile court building and is scheduled for completion in May 2001.

In the courthouse, there is 4,305 square feet of space allocated for administrative staff and staff support functions. This equals 287 square feet per staff person.

Thurston

The court has facilities in two locations: the courthouse and the Family and Juvenile service building. The court also hears civil commitment hearings at St. Peter's Hospital. The court has six courtrooms in the courthouse, averaging 1,397 square feet. There are 6 chambers, averaging 415 square feet. There are 4 jury deliberation rooms, averaging 259 square feet. In the Family and Juvenile Court building, there are four courtrooms, averaging 1,064 square feet. There are 4 chambers, averaging 245 square feet.

In the courthouse, there is 1,287 square feet allocated for administrative staff and staff support functions. This equals 129 square feet per staff person. In the Family and Juvenile

service building, there is 990 square feet allocated for administrative staff and staff support functions. This equals 198 square feet per staff person.

Pierce County has the second fewest courtrooms per judicial officer. The courtrooms in the comparison courts are similar in size with Spokane County having the smallest and Snohomish County having the largest. Each of the courts have about one chamber per judicial officer. The number of jury deliberation rooms per courtroom varies from 0.4 in Thurston County to 0.73 in Pierce County.

Appendix A

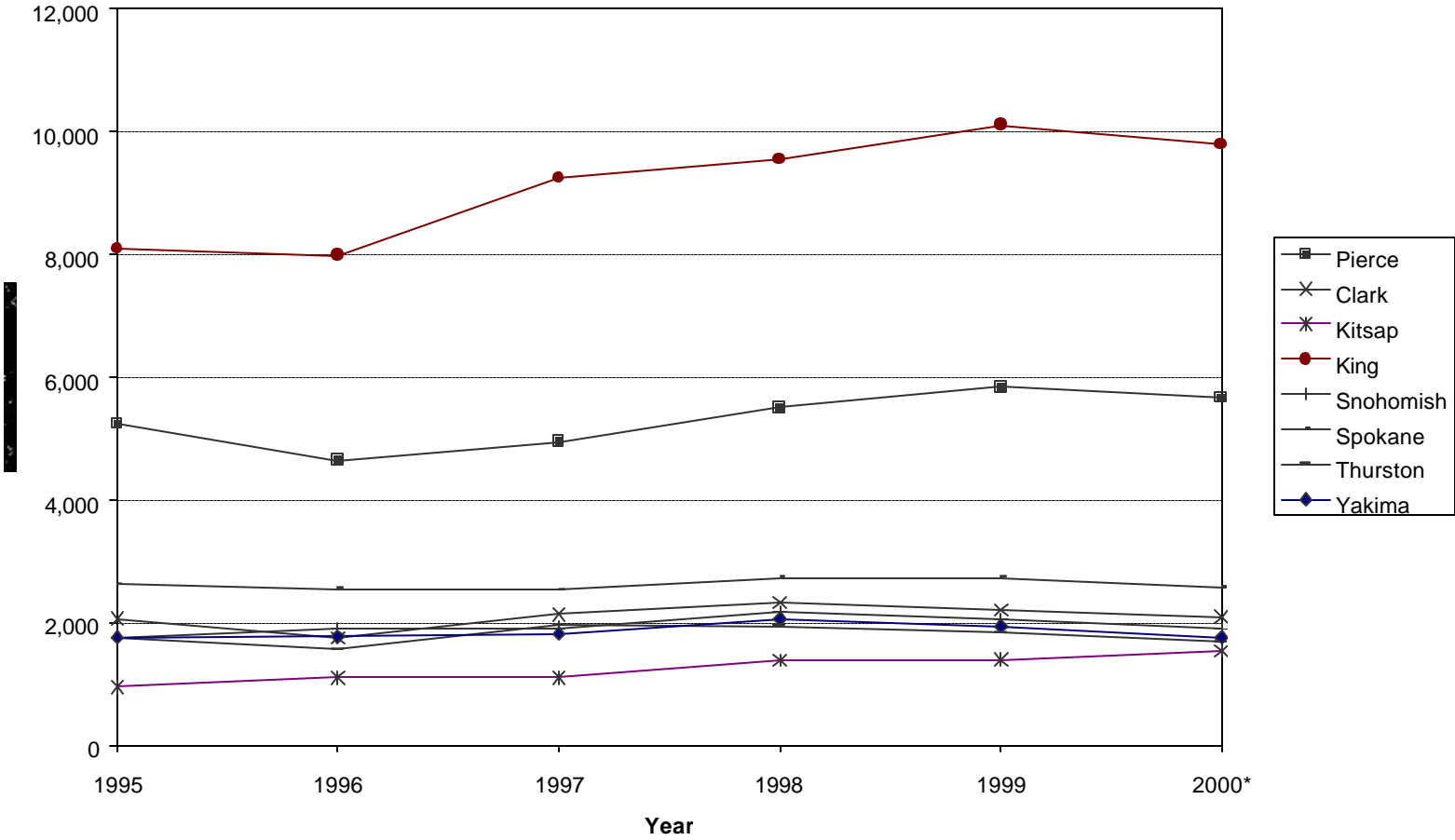
Criminal Filings by Case Category

Criminal Filings by Case Category									
Homicide									
Year	Pierce	Clark	Kitsap	King	Snohomish	Spokane	Thurston	Yakima	
1995	57	20	9	75	29	28	6	18	
1996	46	12	10	81	22	33	8	26	
1997	65	12	7	78	31	22	8	14	
1998	52	7	8	63	20	21	7	16	
1999	49	8	10	61	16	31	6	20	
2000*	47	7	9	52	19	38	4	17	
Sex Crimes									
Year									
1995	205	150	51	307	127	141	46	122	
1996	226	159	57	367	121	100	46	163	
1997	236	142	63	328	137	123	68	153	
1998	221	146	66	424	159	136	103	159	
1999	166	150	85	402	172	102	120	164	
2000*	219	127	99	379	130	113	122	109	
Robbery									
Year									
1995	170	63	15	389	74	106	21	72	
1996	131	29	29	357	79	105	29	66	
1997	184	67	21	392	77	114	32	61	
1998	195	75	26	389	72	137	45	69	
1999	171	59	17	384	55	126	55	45	
2000*	176	62	23	367	61	116	29	57	
Assault									
Year									
1995	437	193	78	881	169	240	131	222	
1996	410	159	74	865	152	293	126	224	
1997	525	214	115	1,226	204	435	176	327	
1998	551	263	185	1,280	233	432	217	295	
1999	521	247	219	1,479	211	478	242	232	
2000*	574	267	180	1,231	181	520	232	261	

Theft/Burglary								
Year	Pierce	Clark	Kitsap	King	Snohomish	Spokane	Thurston	Yakima
1995	1,431	691	289	1,728	526	875	470	439
1996	1,107	526	276	1,677	483	888	509	467
1997	1,205	584	283	1,713	459	706	555	433
1998	1,246	666	326	1,791	556	875	534	540
1999	1,315	675	316	1,838	533	768	462	498
2000*	1,096	628	405	1,730	487	622	457	426
Motor Vehicle Theft								
Year								
1995	80	34	25	301	73	66	34	50
1996	51	29	35	363	82	45	37	35
1997	59	41	25	429	56	57	29	35
1998	61	38	26	418	41	104	32	41
1999	34	27	32	500	22	60	17	43
2000*	45	28	40	536	38	52	18	30
Controlled Substance								
Year								
1995	2,300	516	259	3,020	441	613	649	505
1996	2,085	482	393	2,905	564	625	430	444
1997	2,054	631	315	3,798	607	613	624	456
1998	2,195	652	473	3,833	694	529	603	516
1999	2,636	593	382	3,844	691	506	607	481
2000*	2,664	533	413	3,939	613	512	514	415
Other Felony								
Year								
1995	544	376	218	1,163	312	530	340	297
1996	570	342	231	1,154	378	417	338	305
1997	595	412	251	1,110	317	434	381	323
1998	965	474	272	1,256	392	490	357	415
1999	925	436	337	1,469	346	612	304	448
2000*	816	438	369	1,414	359	577	297	434

Misdemeanor/G. Misdemeanor									
Year	Pierce	Clark	Kitsap	King	Snohomish	Spokane	Thurston	Yakima	
1995	20	21	8	232	7	26	48	39	
1996	16	19	5	211	12	43	44	46	
1997	27	31	23	168	28	25	87	24	
1998	16	7	6	92	8	12	44	15	
1999	18	16	3	126	7	55	27	11	
2000*	27	5	7	142	4	25	13	13	
Total Criminal**									
Year									
1995	5,244	2,064	952	8,096	1,758	2,625	1,745	1,764	
1996	4,642	1,757	1,110	7,980	1,893	2,549	1,567	1,776	
1997	4,950	2,134	1,103	9,242	1,916	2,529	1,960	1,826	
1998	5,502	2,328	1,388	9,546	2,175	2,736	1,942	2,066	
1999	5,835	2,211	1,401	10,103	2,053	2,738	1,840	1,942	
Percent Change 1995 - 1999	11.3%	7.1%	47.2%	24.8%	16.8%	4.3%	5.4%	10.1%	
2000*	5,664	2,095	1,545	9,790	1,892	2,575	1,686	1,762	

Total Criminal Filings
 (excluding Appeals from Lower Courts and Non-Charge Filings)



Appendix B

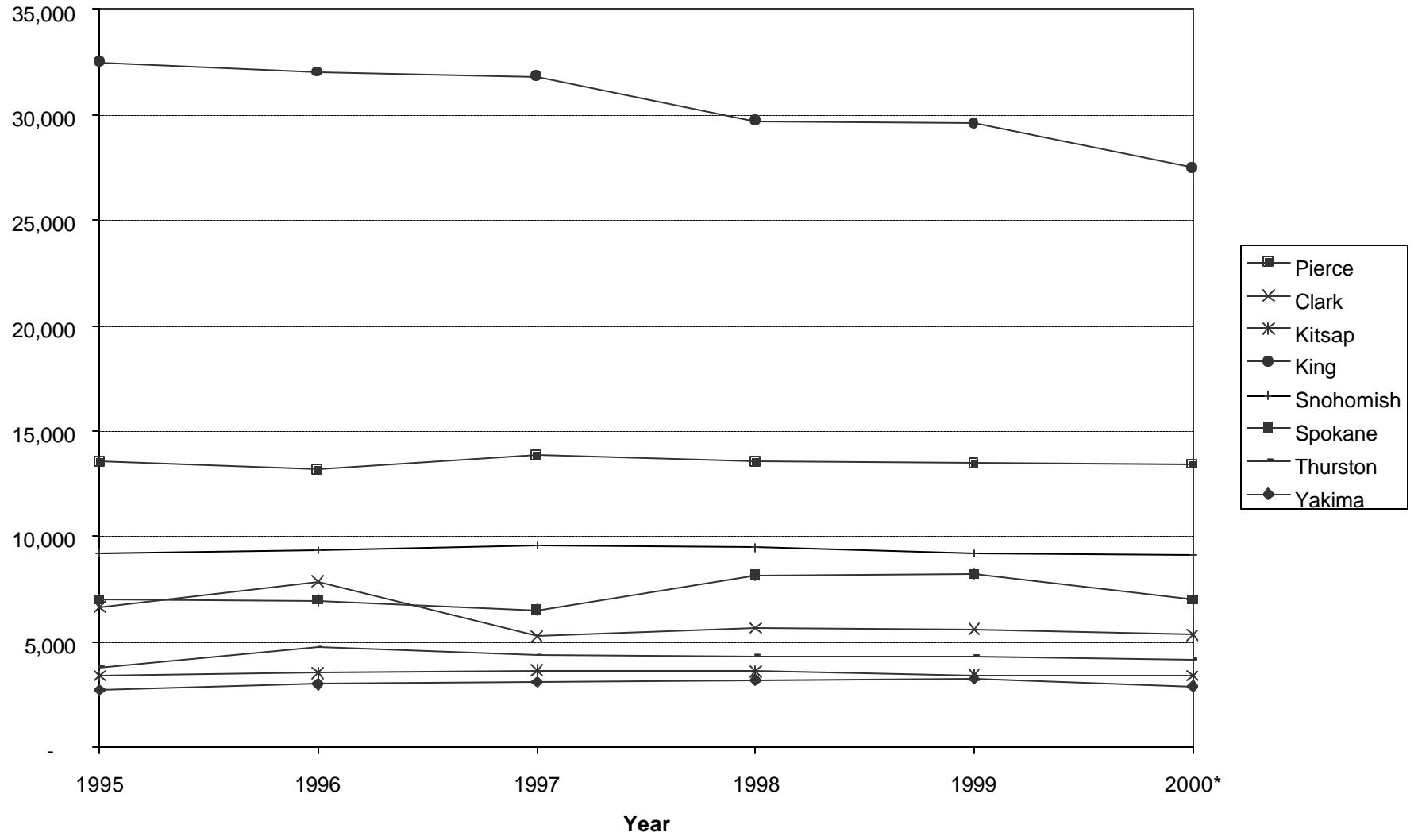
Civil and Domestic Resolutions by Resolution Type

Civil Case Resolution, Not Involving Trial									
Uncontested/Resolved when Filed									
Year	Pierce	Clark	Kitsap	King	Snohomish	Spokane	Thurston	Yakima	
1995	8,506	2,725	1,613	13,004	3,618	2,672	1,564	1,279	
1996	8,961	4,704	1,556	12,372	3,345	2,588	1,991	1,405	
1997	7,544	2,372	1,466	11,533	3,184	2,297	1,881	1,440	
1998	7,820	2,674	1,252	10,714	2,948	2,466	1,800	1,426	
1999	8,066	2,539	1,338	10,007	3,023	2,548	1,896	1,534	
2000*	8,662	2,669	1,404	9,891	3,036	2,832	1,810	1,374	
Dismissed by Clerk									
Year									
1995	636	97	96	824	456	287	196	68	
1996	602	125	150	302	458	286	648	203	
1997	1,466	25	302	378	804	22	159	287	
1998	813	30	285	411	766	1,017	60	285	
1999	622	18	305	410	772	921	18	257	
2000*	1,041	32	133	272	747	118	67	204	
Change of Venue									
Year									
1995	75	3	13	258	58	39	20	2	
1996	67	5	28	241	62	38	8	2	
1997	114	5	17	185	65	22	24	6	
1998	86	7	22	185	56	32	15	2	
1999	112	12	12	212	52	60	7	1	
2000*	116	4	15	149	41	69	6	6	
Decision on Appeal/Review									
Year									
1995	30	0	38	317	89	98	32	7	
1996	47	4	67	257	46	96	45	6	
1997	40	6	19	328	56	229	29	11	
1998	27	1	20	346	45	86	52	5	
1999	36	1	16	331	42	111	58	3	
2000*	22	0	12	269	61	89	43	8	

Dismissed								
Year	Pierce	Clark	Kitsap	King	Snohomish	Spokane	Thurston	Yakima
1995	1,493	2,561	663	3,188	1,045	1,117	711	602
1996	1,506	1,978	793	3,638	1,288	1,036	465	611
1997	1,812	1,043	880	2,990	1,342	1,019	676	653
1998	1,968	928	855	2,847	1,400	1,405	687	663
1999	1,845	783	787	3,233	1,293	909	504	673
2000*	1,690	643	779	3,328	1,367	834	622	622
Settled/Agreed Judgment								
Year								
1995	178	49	232	5,896	1,251	735	168	102
1996	202	83	84	5,744	1,230	799	338	49
1997	371	90	51	5,570	1,120	852	344	49
1998	438	72	53	5,308	1,204	650	436	57
1999	456	64	159	5,299	1,159	1,073	527	50
2000*	385	47	65	4,881	1,122	878	418	49
Settled by Arbitration								
Year								
1995	474	13	47	769	161	118	48	111
1996	388	13	86	887	188	122	79	91
1997	286	22	73	822	182	99	21	84
1998	289	38	81	784	167	110	9	95
1999	257	49	37	775	160	125	36	67
2000*	244	28	58	698	131	103	40	49
Default/Summary Judgment								
Year								
1995	2,163	612	566	6,706	1,741	837	443	303
1996	1,377	537	606	6,401	1,718	890	567	387
1997	2,220	760	733	6,595	1,741	784	638	352
1998	2,112	897	890	5,955	1,912	1,078	584	402
1999	2,061	999	638	5,952	1,937	1,418	700	439
2000*	1,245	877	702	5,380	1,926	1,283	482	373

Closed by Court After Hearing								
Year	Pierce	Clark	Kitsap	King	Snohomish	Spokane	Thurston	Yakima
1995	0	592	134	1,536	812	1,084	610	241
1996	0	410	161	2,170	1,003	1,114	591	251
1997	0	916	108	3,414	1,091	1,185	594	220
1998	0	1,020	144	3,146	972	1,306	670	246
1999	0	1,130	133	3,361	778	1,040	556	242
2000*	0	1,046	218	2,597	706	774	672	226
Non-Trial Total								
Year								
1995	13,555	6,652	3,402	32,498	9,231	6,987	3,792	2,715
1996	13,150	7,859	3,531	32,012	9,338	6,969	4,732	3,005
1997	13,853	5,239	3,649	31,815	9,585	6,509	4,366	3,102
1998	13,553	5,667	3,602	29,696	9,470	8,150	4,313	3,181
1999	13,455	5,595	3,425	29,580	9,216	8,205	4,302	3,266
2000*	13,405	5,346	3,386	27,465	9,137	6,980	4,160	2,911

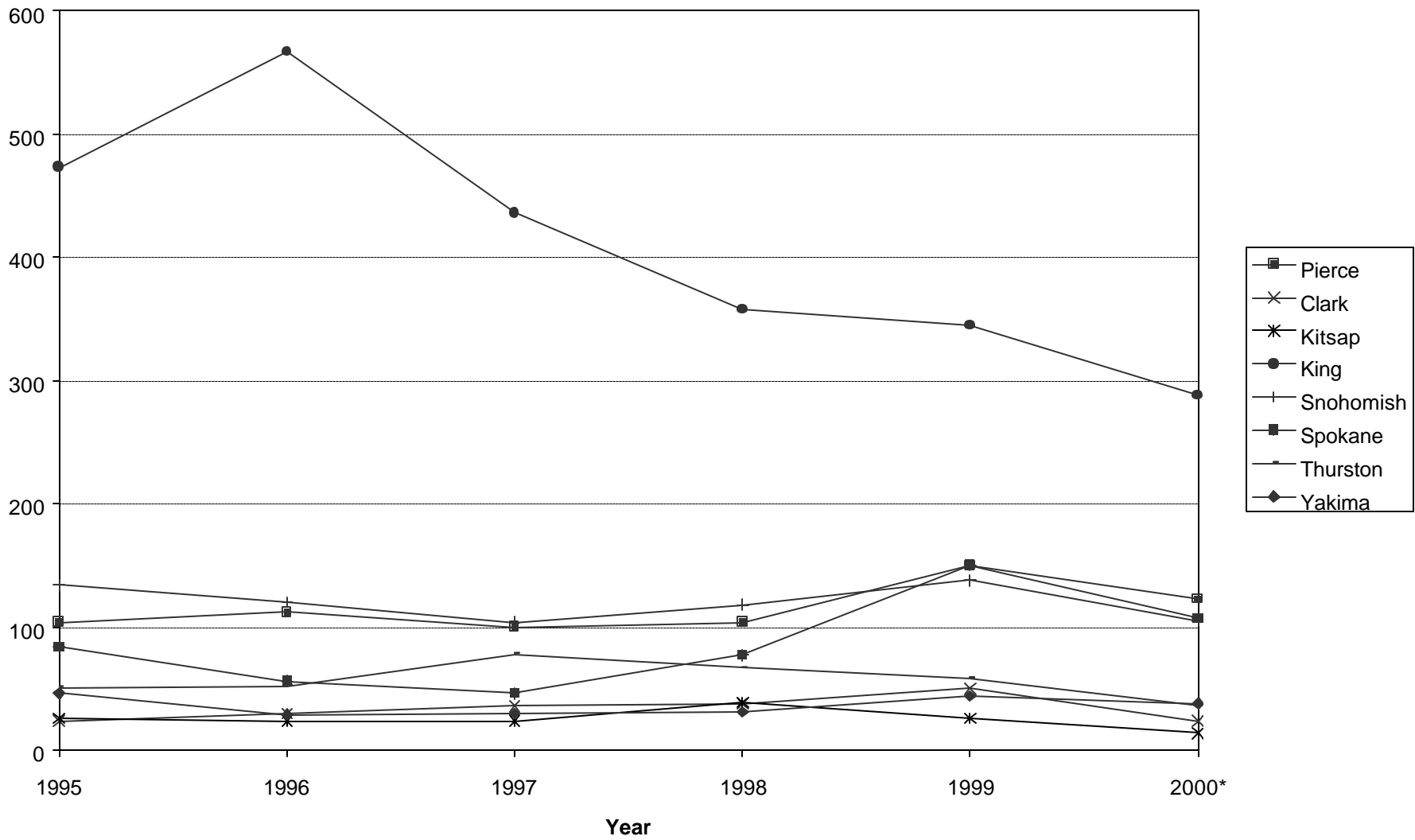
Civil Case Resolutions Not Involving Trial



Civil Case Resolution After Trial Commencement

Dismissed/Settled									
Year	Pierce	Clark	Kitsap	King	Snohomish	Spokane	Thurston	Yakima	
1995	6	1	1	1	3	7	0	1	
1996	9	1	0	1	2	2	3	2	
1997	6	1	0	4	3	1	1	0	
1998	7	0	0	2	10	6	1	0	
1999	11	0	0	2	11	5	2	0	
2000*	6	1	3	0	2	5	3	1	
Court Decision									
Year	Pierce	Clark	Kitsap	King	Snohomish	Spokane	Thurston	Yakima	
1995	72	14	12	292	88	38	35	29	
1996	58	12	8	321	73	19	36	12	
1997	58	13	10	229	57	19	63	13	
1998	58	22	19	187	66	36	47	13	
1999	68	28	13	160	59	83	37	24	
2000*	60	14	5	155	55	48	11	20	
Jury Verdict									
Year	Pierce	Clark	Kitsap	King	Snohomish	Spokane	Thurston	Yakima	
1995	26	9	13	180	43	39	16	16	
1996	45	17	16	245	45	35	13	15	
1997	36	22	14	203	44	26	14	17	
1998	39	16	20	169	42	35	19	18	
1999	71	22	13	183	68	62	19	20	
2000*	57	9	6	133	48	54	22	17	
Trial Total									
Year	Pierce	Clark	Kitsap	King	Snohomish	Spokane	Thurston	Yakima	
1995	104	24	26	473	134	84	51	46	
1996	112	30	24	567	120	56	52	29	
1997	100	36	24	436	104	46	78	30	
1998	104	38	39	358	118	77	67	31	
1999	150	50	26	345	138	150	58	44	
Percent change 1995 - 1999	44.2%	108.3%	0%	-27.1%	3.0%	78.6%	13.7%	-4.3%	
2000*	123	24	14	288	105	107	36	38	

Civil Case Resolutions After Trial Commencement

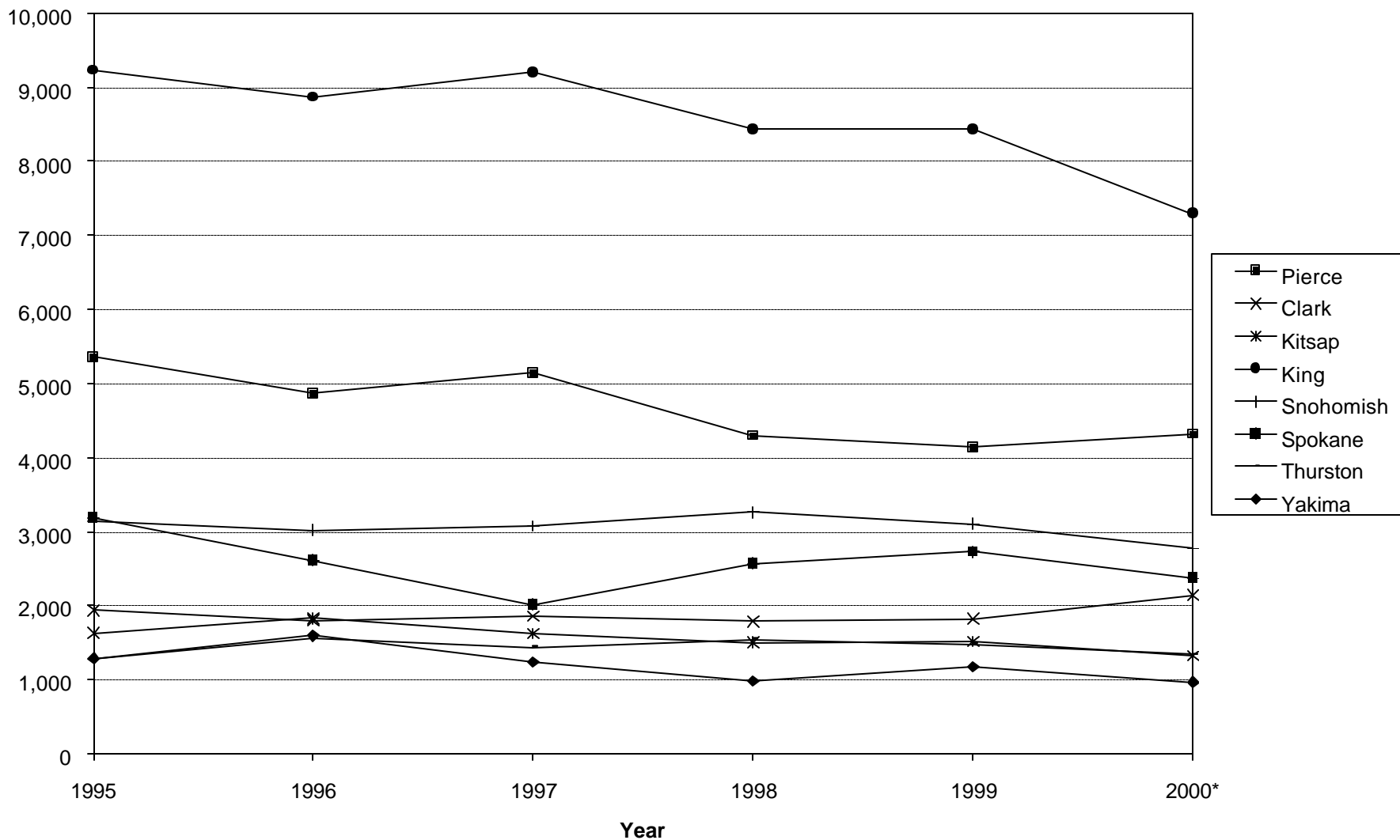


DOMESTIC CASES RESOLVED									
Not Involving Trial		County							
	Uncontested or Resolved When Filed	Pierce	Clark	Kitsap	King	Snohomish	Spokane	Thurston	Yakima
	1995	4,582	1,043	165	438	661	399	88	244
	1996	4,026	1,127	40	425	596	251	126	223
	1997	3,826	975	58	830	507	60	71	235
	1998	3,329	1,182	8	179	368	43	20	142
	1999	3,274	1,270	8	78	310	63	8	196
	2000*	3,087	1,013	12	38	221	110	11	161
	Dismissed by Clerk								
	1995	509	202	134	202	328	520	95	213
	1996	589	22	350	102	281	213	264	246
	1997	693	0	179	170	294	0	88	185
	1998	230	62	151	111	441	598	79	90
	1999	131	19	200	199	323	608	0	204
	2000*	344	607	157	97	423	213	0	162
	Change of Venue								
	1995	15	8	15	23	11	4	5	4
	1996	13	13	6	23	13	14	4	5
	1997	11	4	5	21	5	7	11	6
	1998	18	2	8	22	11	5	8	2
	1999	15	3	3	16	10	6	6	2
	2000*	14	2	4	21	15	4	5	1

DOMESTIC CASES RESOLVED									
Not Involving Trial (continued)		County							
		Pierce	Clark	Kitsap	King	Snohomish	Spokane	Thurston	Yakima
	Dismissed								
	1995	205	95	64	878	7	44	41	30
	1996	178	102	82	831	19	29	35	320
	1997	440	89	68	783	15	51	48	60
	1998	574	84	45	827	40	86	237	27
	1999	571	183	71	827	26	185	233	41
	2000*	675	98	44	662	59	272	216	32
	Settlement or Agreed Judgment								
	1995	43	329	1,095	6,677	1,841	1,861	24	585
	1996	57	266	1,191	6,582	1,792	1,769	59	598
	1997	164	487	1,168	6,431	1,950	1,648	46	538
	1998	140	308	1,121	6,527	2,046	1,635	56	574
	1999	144	220	1,123	6,542	2,115	1,588	51	532
	2000*	193	235	1,015	5,789	1,806	1,524	24	470
	Settled by Arbitration								
	1995	0	0	0	0	4	0	0	0
	1996	0	0	0	1	6	0	0	0
	1997	0	0	0	0	3	0	0	0
	1998	0	0	0	0	10	0	0	0
	1999	0	0	0	0	6	1	0	1
	2000*	0	0	0	0	7	0	0	0

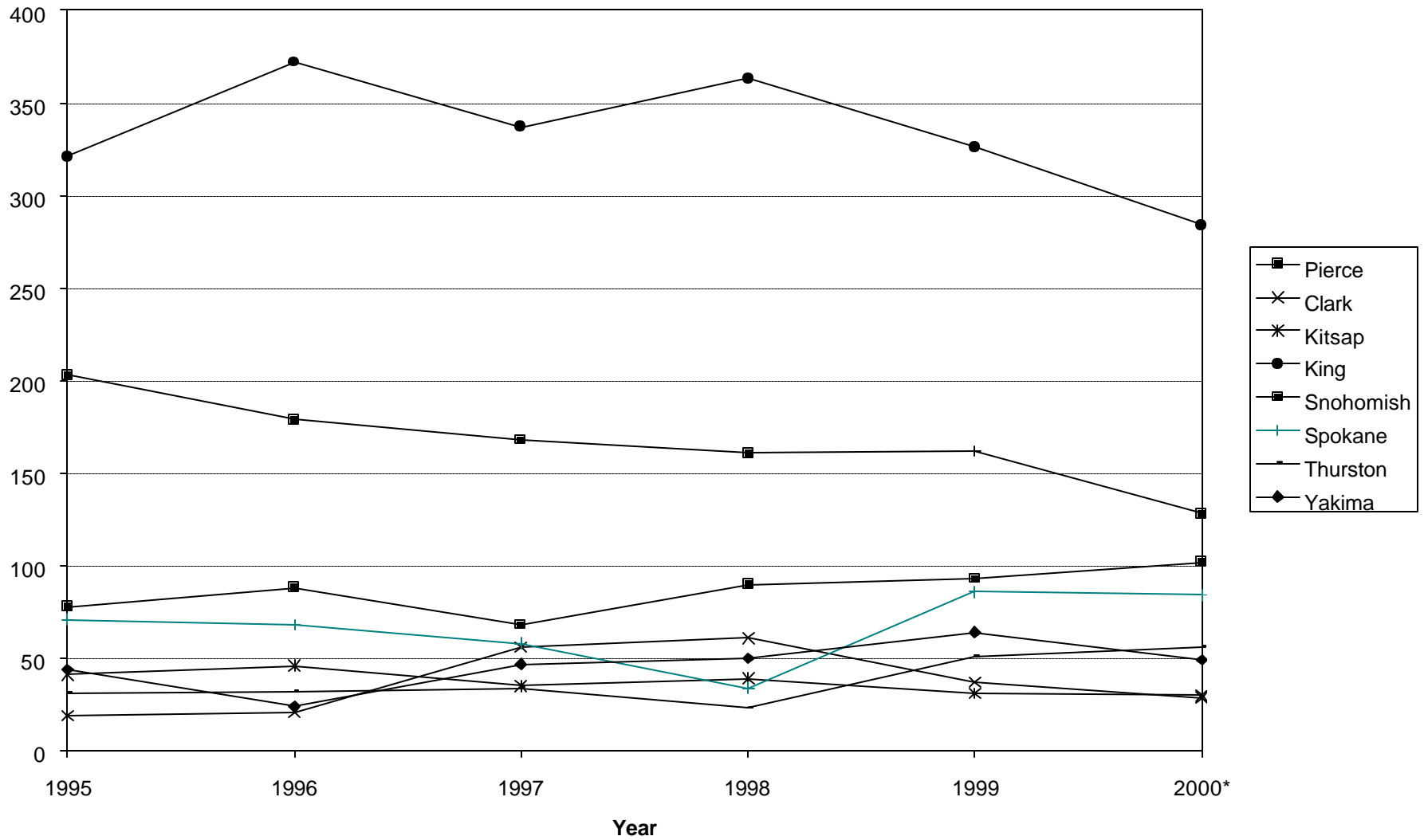
DOMESTIC CASES RESOLVED									
Not Involving Trial (continued)		County							
		Pierce	Clark	Kitsap	King	Snohomish	Spokane	Thurston	Yakima
	Default or Summary Judgment								
	1995	1	257	151	1,004	291	308	59	215
	1996	0	258	132	868	311	273	55	204
	1997	7	185	123	873	299	216	46	211
	1998	2	137	126	738	346	167	38	149
	1999	2	122	96	681	318	194	54	195
	2000*	0	170	76	611	250	207	78	142
	Closed by Court								
	1995	0	5	5	7	0	50	968	0
	1996	0	16	33	33	0	63	1,012	1
	1997	0	115	22	88	0	30	1,130	2
	1998	0	18	45	30	0	35	1,108	2
	1999	0	9	15	87	0	80	1,130	0
	2000*	0	19	17	70	0	43	1,007	1
	Total Not Involving Trial								
	1995	5,355	1,939	1,629	9,229	3,143	3,186	1,280	1,291
	1996	4,863	1,804	1,834	8,865	3,018	2,612	1,555	1,597
	1997	5,141	1,855	1,623	9,196	3,073	2,012	1,440	1,237
	1998	4,293	1,793	1,504	8,434	3,262	2,569	1,546	986
	1999	4,137	1,826	1,516	8,430	3,108	2,725	1,482	1,171
	Percent Change 1995 - 1999	-22.7%	-5.8%	-6.9%	-8.7%	-1.1%	-14.5%	15.8%	-9.3%
	2000*	4,313	2,144	1,325	7,288	2,781	2,373	1,341	969

Domestic Case Resolutions Not Involving Trial



DOMESTIC CASES RESOLVED									
After Trial Commencement		County							
		Pierce	Clark	Kitsap	King	Snohomish	Spokane	Thurston	Yakima
	Dismissed or Settled								
	1995	0	0	0	0	11	2	1	0
	1996	1	0	0	0	0	0	1	0
	1997	6	0	0	0	0	0	1	0
	1998	3	0	1	0	1	0	1	0
	1999	1	0	0	0	1	3	3	8
	2000*	2	0	0	1	1	5	0	2
	Court Decision								
	1995	78	19	41	321	192	69	30	44
	1996	87	21	46	372	179	68	31	24
	1997	62	56	35	337	168	58	33	47
	1998	87	61	38	363	160	34	22	50
	1999	92	37	31	326	161	83	48	56
	2000*	100	29	30	283	127	79	56	47
	Total After Trial								
	1995	78	19	41	321	203	71	31	44
	1996	88	21	46	372	179	68	32	24
	1997	68	56	35	337	168	58	34	47
	1998	90	61	39	363	161	34	23	50
	1999	93	37	31	326	162	86	51	64
	Percent Change 1995 - 1999	19.2%	94.7%	-24.4%	1.6%	-20.2%	21.1%	64.5%	45.5%
	2000*	102	29	30	284	128	84	56	49

Domestic Case Resolutions After Trial Commencement



Appendix C

Clearance Rate Trend Report

Clearance Rate by Case Category									
Criminal									
Year	Pierce	Clark	King	Kitsap	Snohomish	Spokane	Thurston	Yakima	
1995	0.999	1.011	1.015	0.971	0.893	0.927	0.857	0.966	
1996	0.955	1.134	0.998	0.909	1.018	0.914	1.102	1.025	
1997	0.983	0.987	0.918	1.064	0.878	0.984	0.969	0.897	
1998	0.992	0.993	0.955	0.886	0.980	0.982	1.016	0.962	
1999	0.970	1.028	0.991	0.908	1.024	1.057	0.962	1.025	
Percent change 1995 - 1999	-2.9%	1.7%	-2.4%	-6.5%	14.7%	14.0%	12.3%	6.1%	
Civil									
Year									
1995	0.951	1.257	0.976	0.851	0.954	0.851	0.873	0.884	
1996	0.936	1.633	0.982	0.921	0.972	0.877	1.085	0.939	
1997	1.029	0.863	1.021	0.973	0.962	0.771	0.957	0.987	
1998	1.002	0.954	0.986	0.961	0.989	1.005	0.999	0.993	
1999	0.979	0.909	1.0	0.898	0.992	1.124	0.973	0.965	
Percent change 1995 - 1999	2.9%	-27.7%	2.5%	5.5%	4.0%	32.1%	11.5%	9.2%	
Domestic Relations									
Year									
1995	0.956	0.935	0.966	0.937	1.021	1.062	0.840	0.993	
1996	1.018	0.869	0.994	1.205	0.953	0.948	1.039	1.318	
1997	1.156	0.895	1.027	1.022	0.927	1.162	0.979	1.022	
1998	1.015	0.934	0.985	1.034	1.009	0.998	1.049	0.935	
1999	0.998	0.916	1.003	1.020	1.002	1.162	1.004	0.972	
Percent change 1995 - 1999	4.4%	-2.0%	3.8%	8.9%	-1.9%	9.4%	19.5%	-2.1%	
Probate/Guardianship									
Year									
1995	0.938	0.934	0.972	0.966	0.964	0.955	0.973	0.909	
1996	0.923	0.993	0.950	1.003	0.985	0.931	1.069	0.926	
1997	0.948	0.851	1.019	0.966	0.989	0.953	0.892	0.975	
1998	0.899	0.795	0.993	0.908	1.011	1.011	0.799	0.901	
1999	0.901	0.789	0.977	0.957	1.003	0.992	0.778	0.988	
Percent change 1995 - 1999	-3.9%	-15.5%	0.5%	-0.9%	4.0%	3.9%	-20.0%	8.7%	

Adoption/Paternity									
Year	Pierce	Clark	King	Kitsap	Snohomish	Spokane	Thurston	Yakima	
1995	0.960	0.919	1.025	0.810	1.066	0.867	0.875	1.000	
1996	0.810	0.900	1.237	1.005	1.027	1.017	0.950	0.947	
1997	0.898	0.953	1.067	0.927	0.983	1.603	0.843	0.997	
1998	0.923	0.776	1.012	1.015	1.140	1.042	1.937	1.063	
1999	0.902	0.799	1.067	1.051	0.953	1.036	0.804	0.986	
Percent change 1995 - 1999	-6.0%	-13.1%	4.0%	29.7%	-10.6%	19.4%	-8.1%	-1.4%	
Mental Illness/Alcohol									
Year									
1995	0.956	0.743	0.983	0.926	0.986	0.966	0.997	0.883	
1996	0.989	0.837	0.968	0.995	0.996	0.982	0.953	1.021	
1997	0.995	0.829	0.931	0.865	1.004	0.831	0.985	0.985	
1998	0.995	0.749	0.989	0.946	0.952	0.823	0.983	0.978	
1999	0.991	1.043	0.980	0.934	1.041	0.902	0.921	0.937	
Percent change 1995 - 1999	3.6%	40.4%	-0.3%	0.8%	5.5%	-6.6%	-7.7%	6.1%	
Juvenile Dependency									
Year									
1995	0.352	0.880	0.667	0.972	0.737	0.703	0.736	0.734	
1996	0.403	1.013	0.916	0.932	0.921	0.889	1.121	0.867	
1997	0.647	0.993	0.583	0.953	0.939	0.685	0.647	0.989	
1998	0.766	0.920	1.370	0.893	0.929	0.841	0.773	0.830	
1999	0.648	0.399	0.909	0.918	0.967	0.837	1.172	0.902	
Percent change 1995 - 1999	84.2%	-54.6%	36.4%	-5.5%	31.3%	19.1%	59.2%	22.8%	
Juvenile Offender									
Year									
1995	0.109	1.005	1.103	1.015	0.915	1.040	0.823	0.908	
1996	0.170	0.994	0.995	1.073	0.970	0.943	1.003	1.125	
1997	DNR	0.958	1.029	1.042	1.041	1.003	0.931	1.038	
1998	0.763	1.021	1.013	1.008	0.797	0.923	0.958	1.038	
1999	0.972	0.955	1.029	1.033	0.887	1.165	0.991	1.025	
Percent change 1995 - 1999	790.2%	-5.0%	-6.7%	1.7%	-3.1%	12.0%	20.4%	12.8%	

DNR – Did not report

Appendix D

JIS Case Management Reports

CASE MANAGEMENT REPORT SUMMARY

SUPERIOR COURT MONTHLY CASELOAD STATISTICS REPORT

SCOMIS Report Menu Name: CSCD SCOMIS MONTHLY CASELOAD REPORT

SCOMIS Print Menu Name: MONTHLY CASELOAD REPORT

Monthly caseload statistics reports for the previous month are automatically generated for all SCOMIS counties statewide on the third Tuesday of each month. A single county caseload statistics report for any month in the current calendar year can be generated at any time from the SCOMIS reports menu. Whenever the caseload statistics program is executed, the Research & Information Services caseload database is updated with the new information.

CASES WITH ERRONEOUS INFORMATION FILING DATE(S)

SCOMIS Report Menu Name: CSBD SCOMIS BAD INFORMATION FILING DATES REPORT

SCOMIS Print Menu Name: BAD INFORMATION FILING DATES REPORT

The *Cases with Erroneous Information Filing Date(s)* report is created only if cases which had some activity during a month were missing a valid criminal or juvenile offender information filing date. It is automatically generated after the monthly caseload statistics report, *if* any 'bad date' cases were detected. A single county report for any month in the current calendar year can be generated at any time from the SCOMIS reports menu; this is useful in correcting these problems *prior* to computing caseload statistics. Since the cases listed with erroneous information filings dates are excluded from the caseload statistics report, it is necessary to correct these erroneous dates before generating a caseload report with accurate information.

SUPERIOR COURT MONTHLY CASELOAD STATISTICS EXCEPTION REPORT

SCOMIS Report Menu Name: Not yet available

SCOMIS Print Menu Name: MONTHLY CASELOAD EXCEPTION REPORT

A monthly caseload exception report for the previous month is automatically generated for any SCOMIS county in which possible recording errors were detected in the computation of monthly caseload statistics. The scope of this exception report will increase as resources allow.

CASE MANAGEMENT REPORT SUMMARY (CONT'D)

PENDING CASELOAD SUMMARY REPORTS

<i>Actual Report Names:</i>	Pending Resolution Caseload (By Case Type By Year)
	Resolved Pending Completion Caseload (By Case Type By Year)
	Pending Resolution Caseload Summary
	Resolved Pending Completion Caseload Summary
	Age of Active Pending Resolution Caseload
	Age of Active Resolved Pending Completion Caseload
	Pending Caseload Exception Report
<i>SCOMIS Report Menu Name:</i>	PEND SCOMIS PENDING CASELOAD REPORT
<i>SCOMIS Print Menu Name:</i>	PENDING CASELOAD REPORT AS OF (DATE)

Pending caseload summary reports are automatically generated for all SCOMIS counties statewide on the third Tuesday of each month. This summary report contains seven separate reports which document the case status of all historical pending cases as of the last day of the previous month. A single county pending caseload summary report for any given date can be generated at any time from the SCOMIS reports menu. Whenever the pending caseload report program is executed, the extracted pending cases are written to a Research & Information Services database for use by the detailed listing reports.

CASE MANAGEMENT REPORT SUMMARY (CONT'D)

CASEFLOW SUMMARY REPORT

SCOMIS Report Menu Name: CSFL SCOMIS CASEFLOW SUMMARY REPORT

SCOMIS Print Menu Name: CASEFLOW SUMMARY REPORT (DATE - DATE)

Caseflow summary reports are automatically generated for all SCOMIS counties statewide on the third Tuesday of each month. This summary report documents caseflow changes for the previous month. A single county caseflow summary report for any given date range can be generated at any time from the SCOMIS reports menu.

PENDING CASELOAD LISTING REPORT

SCOMIS Report Menu Name: LIST SCOMIS PENDING CASELOAD LISTING REPORT

SCOMIS Print Menu Name: PENDING CASELOAD LISTING REPORT

A pending caseload listing report, which lists specific case numbers and other case information, can be generated from the SCOMIS reports menu. This report will be based on the most recent extract of pending cases (i.e., from the last execution of the pending caseload summary reports), and permits a listing of pending cases for desired filing years and case categories. Thus while the Research & Information Services database contains all pending cases for a court as of a given date, it is possible to select a subset of those cases for the case listing report to assist in case management.

CASE MANAGEMENT REPORT SUMMARY (CONT'D)

ENHANCED PENDING CASELOAD LISTING REPORTS

Actual Report Names: Pending Cases With Dispositive Documents

Enhanced Pending Caseload Listing Report

SCOMIS Report Menu Name: ELST SCOMIS PENDING ENHANCED LISTING REPORT

SCOMIS Print Menu Names: ENHANCED LIST WITH DISPOSITIVE DOCUMENTS

PENDING ENHANCED LISTING REPORT

These enhanced listing reports provide a substantial amount of information on each case identified as “languishing.” A languishing case meets all of the following criteria.

- (1) The case is identified as pending resolution and/or completion as of the most recent pending caseload report;
- (2) The case is not on review;
- (3) The case has not been completed during the time period between the most recent pending caseload report and the creation of the enhanced listing report(s); and
- (4) The case has no future calendar setting date.

The pending caseload with dispositive documents report includes information on those cases with at least one dispositive entry in the docket. The enhanced pending caseload listing report provides information on those cases without a dispositive docket entry.

These reports can be generated from the SCOMIS reports menu, and are based on the most recent extract of pending cases (i.e., from the last execution of the pending caseload summary reports). Given the amount of information per case on this report, it will be necessary to select only one case category per report.

Appendix E

Organizational Charts

Not available in electronic format

Appendix F

Job Descriptions for Judicial Assistants/Bailiffs

Not available in electronic format

Appendix G

Clark County Monthly Report to County Executive

Not available in electronic format