

Changing the World one fair at a time.



Count Us In. We want to participate in the Livable Communities Fair.

Contact Name _____
Company or Organization _____
Street Address _____
City _____ State _____ Zip _____
Phone _____ FAX _____
E-mail Address _____
Product, Service, Activity _____

If you prefer:

- E-mail your reservation to pclat@co.pierce.wa.us
- Sign up online at www.livablepiercecounty.org
- FAX the form to (253) 798-6828
- Or call (253) 798-2477

Changing the
World one fair
at a time.



Livable Communities Fair
930 Tacoma Avenue South, Room 737
Tacoma, Washington 98402-2100

PRESORTED STANDARD
US POSTAGE
PAID
TACOMA WA
PERMIT NO 820



Livable Communities Fair
 930 Tacoma Ave. So., Rm. 737
 Tacoma, WA 98402-2100

THE FOURTH BIENNIAL

LIVABLE COMMUNITIES FAIR

**May 17th, 2008, Tacoma Dome Exhibit Hall.
 Sign up now and show everyone how your product or service can make a difference.**

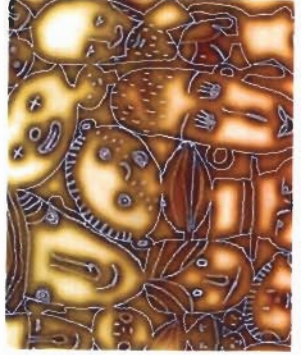


Be more than a spectator at the Livable Communities Fair, be a sponsor. It's a unique opportunity to showcase your business while making your community a better place to live, work and play.

Your interactive exhibit or activity can focus on gardening, home improvement, recreation, energy savings, recycling, transportation, community involvement, conservation, or just about anything that benefits the neighborhoods of Pierce County.

For more information, call (253) 798-7477, E-mail pclef@co.pierce.wa.us, or visit www.livablepiercecounty.org.

In 2006, more than 10,000 people enjoyed the Livable Communities Fair.



Fairgoers come hungry for information on how to make the world a better place.

Plan ahead for success.

The Livable Communities Fair gets more and more popular all the time. Spaces go fast. So add it to your budget, put it on your calendar and reserve your spot today.

You can even contribute financially to the fair as a \$1,000, \$2,500 or \$5,000 sponsor. Checks should be made to PCCDC, a non-profit 501(c)3 organization.

