

# Solid Waste Administrator's Report

Pierce County Solid Waste Advisory Committee

February 9, 2011



Pierce County  
Public Works & Utilities  
Solid Waste Division



# Topics

---

- 2008 SWMP Supplement Policy 6.1.4
- Landfill Capacity Analysis
- Tacoma Interlocal Agreement
- 2008 Supplement Implementation Status
- 2010 – Year in Statistics
- Legislative Update



Pierce County  
Public Works & Utilities  
Solid Waste Division



# Policy 6.1.4

---

- The annual average tonnage “cap” (created by Condition AT in the Conditional Use Permit) will be removed after all of the following occur:



Pierce County  
Public Works & Utilities  
Solid Waste Division



# Policy 6.1.4 a

---

- LRI documents and projects disposal tonnage by each of three systems
- Demonstrate and provide assurances that accepting more than an average of 100,000 tons per year from Tacoma won't negatively impact ability to accept County waste through December 2019
- COMPLETE: December 18, 2009 and December 30, 2010



Pierce County  
Public Works & Utilities  
Solid Waste Division



# Policy 6.1.4 b

---

- Interlocal Agreement with Tacoma
- Collaborate to increase recycling and diversion programs and decrease the per person waste disposed in the landfill, thus protecting the landfill resource.
- Meet/surpass the pounds/capita/day waste disposal goals outlined in Appendix F.
- COMPLETE: January 28, 2011



Pierce County  
Public Works & Utilities  
Solid Waste Division



# Policy 6.1.4 c

---

- The Pierce County Department of Public Works and Utilities prepares a report on the satisfactory completion of points “a” and “b” to the Pierce County Solid Waste Advisory Committee and the Pierce County Council.
  
- COMPLETE: February 1, 2011 Letter

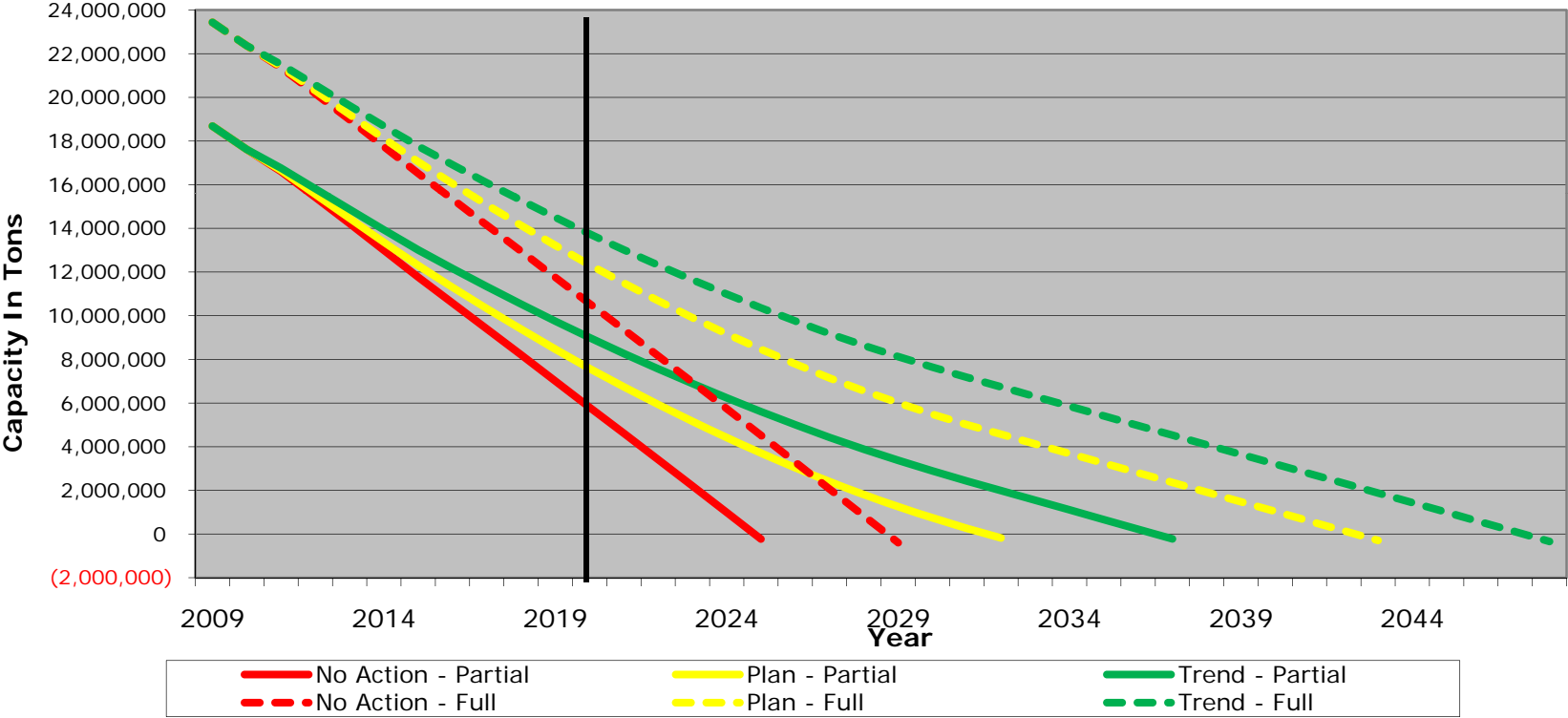


Pierce County  
Public Works & Utilities  
Solid Waste Division



# Landfill Capacity Analysis

Remaining Capacity Under Six Planning Scenarios



Pierce County  
Public Works & Utilities  
Solid Waste Division



# Landfill Capacity Analysis

Scenario	Capacity Achieved	
	2009 Analysis	2010 Analysis
No Action – Partial	April 2025	October 2025
Plan – Partial	January 2031	August 2032
Trend – Partial	December 2035	July 2037
No Action – Full	January 2029	August 2029
Plan – Full	February 2041	April 2043
Trend – Full	March 2046	March 2048



Pierce County  
Public Works & Utilities  
Solid Waste Division



# Landfill Capacity Analysis

## Additional Capacity With 25 Percent Long-Haul Starting in 2016

Scenario	2010 Analysis	With Long Haul
No Action – Partial	October 2025	2029
Plan – Partial	August 2032	2041
Trend – Partial	July 2037	2047
No Action – Full	August 2029	2034
Plan – Full	April 2043	2056
Trend – Full	March 2048	2061



Pierce County  
Public Works & Utilities  
Solid Waste Division



# Tacoma Interlocal Agreement

---

- 10 year agreement executed January 28, 2011
- Framework for continued cooperation
  - City and County as joint planning partners
  - per capita disposal dropping to 1.09 pounds per capita per day by the year 2032
  - Expands cooperative efforts
    - Environmental education and outreach
    - Waste reduction programs
    - Product stewardship



Pierce County  
Public Works & Utilities  
Solid Waste Division



# Solid Waste Plan Implementation

---

- 169 Policy Recommendations new in 2008
- 32 Recommendations retained from 2000
  - 24.9 percent complete
  - 26.4 percent active
  - 12.4 percent active in Compost BMP
  - 36.3 percent not started yet



Pierce County  
Public Works & Utilities  
Solid Waste Division



# Solid Waste Plan Implementation

## First Year Implementation (2009) – 2008 Supplement Page 59

Policy		Complete	Active	Organics	Future
2.1	Waste Characterization Audit	3	0	0	0
3.2	Organics: Characterization Results	0	0	3	0
4.5	Waste Characterization Audit	1	0	0	0
		<b>57 %</b>		<b>43 %</b>	



Pierce County  
Public Works & Utilities  
Solid Waste Division



# Solid Waste Plan Implementation

## Years One to Five (2009 - 2013) – 2008 Supplement Pages 59 to 61

Policy	Complete	Active	Organics	Future
6.1 Monitor Disposal Needs				
6.2 Waste Transfer System	6	4	0	2
6.3 Landfill BMPs				
1.2 School District Recycling	3	6	1	3
1.4 Environmental Education				
1.1 Business Assistance	0	5	0	11
2.4 Business Recycling				
4.3 Government Green Practices	5	1	1	3
2.3 Facilitate Innovative Programs	1	1	0	0
2000 Plan Semi-Annual Reporting 10-1	0	0	0	1
	28%	31%	4%	37%



Pierce County  
Public Works & Utilities  
Solid Waste Division



# Solid Waste Plan Implementation

Years Two to Five (2010 - 2013) – 2008 Supplement Page 61

Policy		Complete	Active	Organics	Future
3.6 4.6	Construction Debris Recycling	0	0	0	14
					100%



Pierce County  
Public Works & Utilities  
Solid Waste Division



# Solid Waste Plan Implementation

Years Three to Five (2011 - 2013) – 2008 Supplement Pages 61 to 63

Policy	Complete	Active	Organics	Future
Organics: 3.3 Diversion and Conversion 3.4 Permitting Digesters 3.5 Collection 5.1 Best Management Practices 5.2 Sustainable Organics 3.1 Management Individual Responsibility	0	5	18	2
2.2 Expand Residential Recycling	1	1	0	3
2.8 Recycling Dominant Collection Service	0	1	1	1
	3%	21%	58%	18%



Pierce County  
Public Works & Utilities  
Solid Waste Division



# Solid Waste Plan Implementation

## Continuing (pre-2008) Programs – 2008 Supplement Page 63

Policy	Complete	Active	Organics	Future
1.5 through 1.7 2.7 and 6.4 7.1 through 7.3	11	14	1	10
	31%	39%	3%	27%

## Non-Prioritized Policies – All Policies Not Covered Above from 2000 Plan and 2008 Supplement

	Complete	Active	Organics	Future
	19	15	0	23
	33%	26%	0%	40%



Pierce County  
Public Works & Utilities  
Solid Waste Division



# Solid Waste Plan Implementation

---

- 73 Recommendations To Be Started
  - Non-Residential Recycling (31)
  - Residential Programs (7)
  - Pierce County Responds (3)
  - Other (3)
- Outside our Control?
  - Green Building (17)
  - Waiting on Future Events / If Necessary (8)



Pierce County  
Public Works & Utilities  
Solid Waste Division



# 2010 Statistics

---

- 358,901 tons disposed from County system
  - 3<sup>rd</sup> consecutive year of decline
  - 4.23 percent decline from 2009
  - 20 percent decline from 2007
- Below Projections
  - SWMP projection: 467,188 tons
  - 2009 Capacity Analysis: 376,831 tons

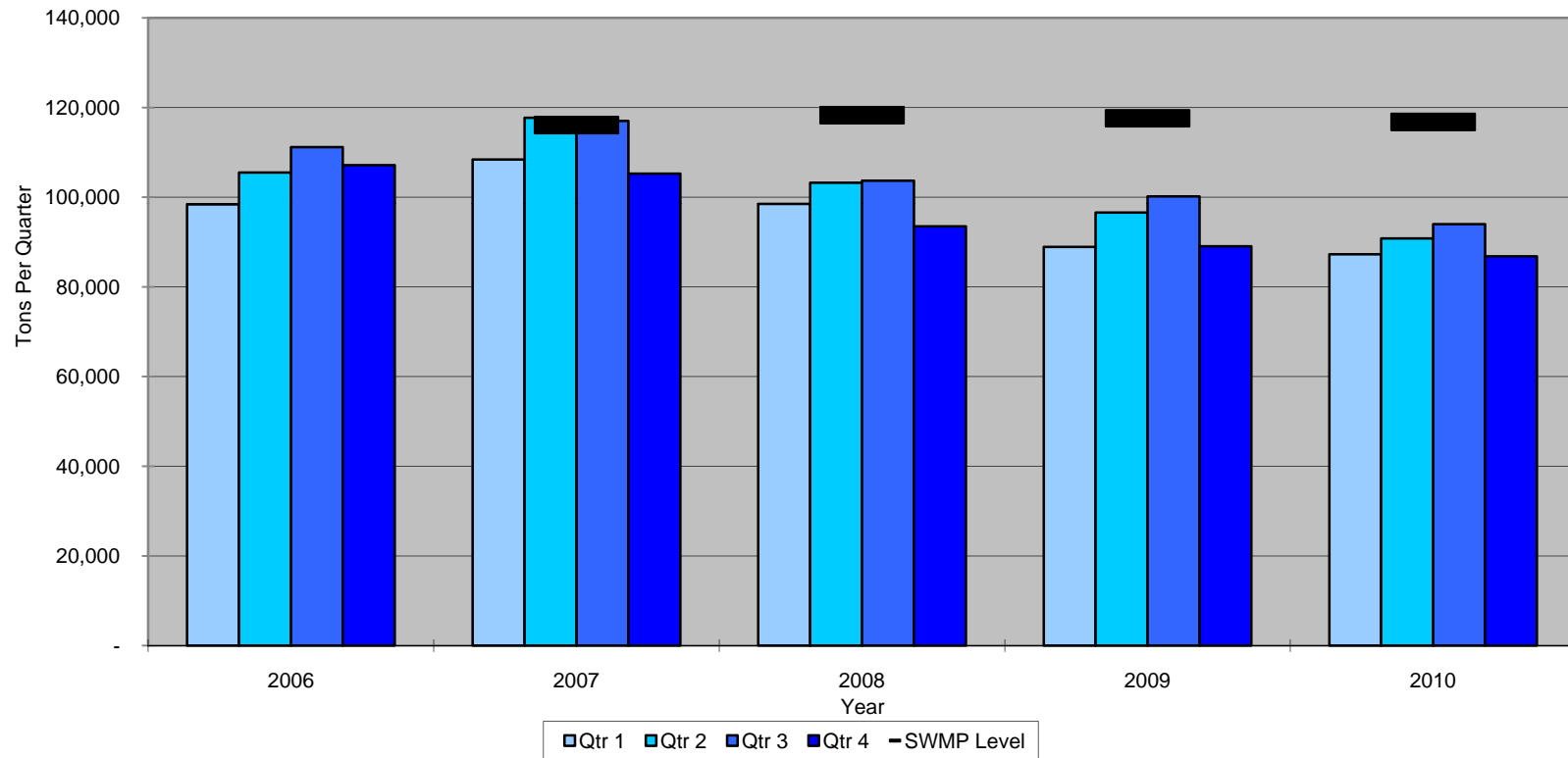


Pierce County  
Public Works & Utilities  
Solid Waste Division



# 2010 Statistics

Pierce County Solid Waste System - Total Disposal

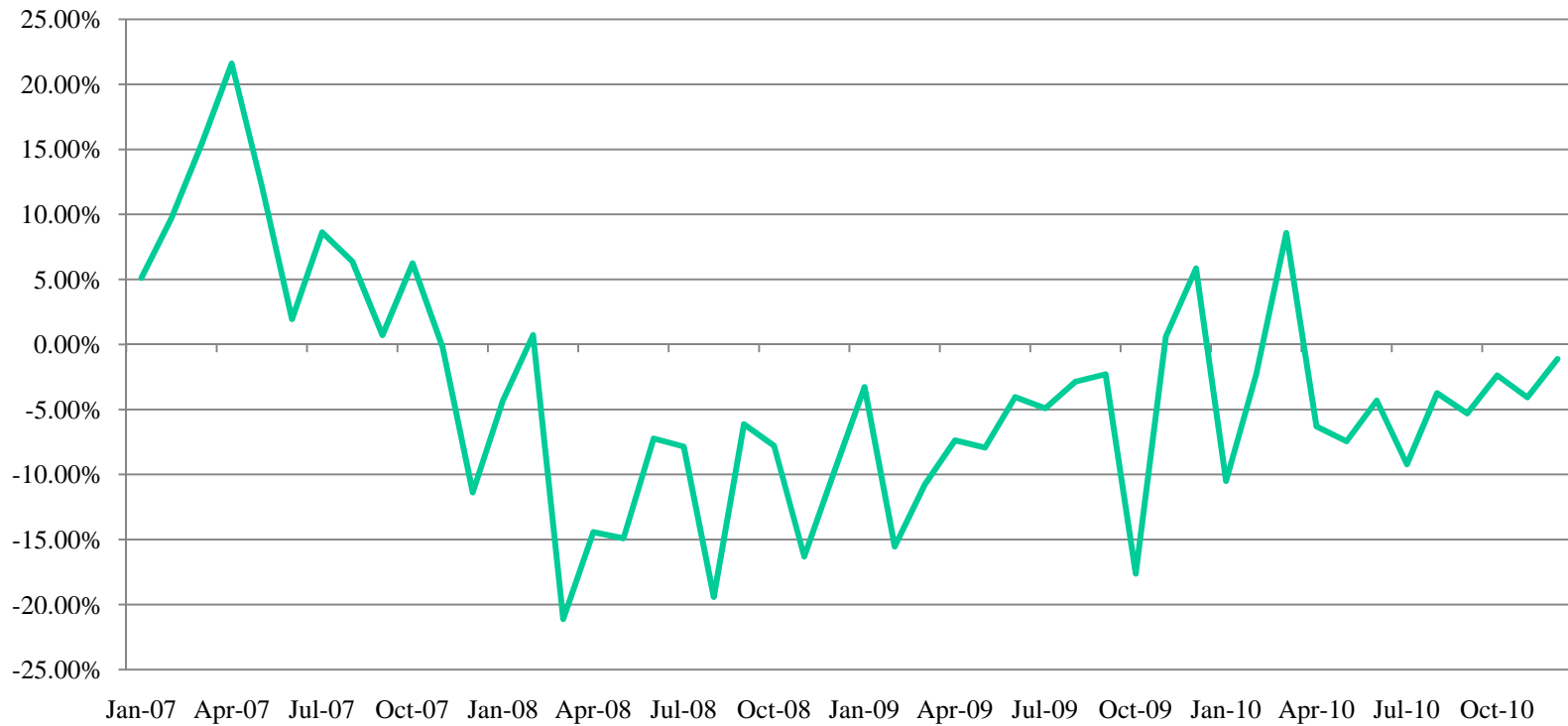


Pierce County  
Public Works & Utilities  
Solid Waste Division



# 2010 Statistics

## Year Over Year - January 2007 to December 2010

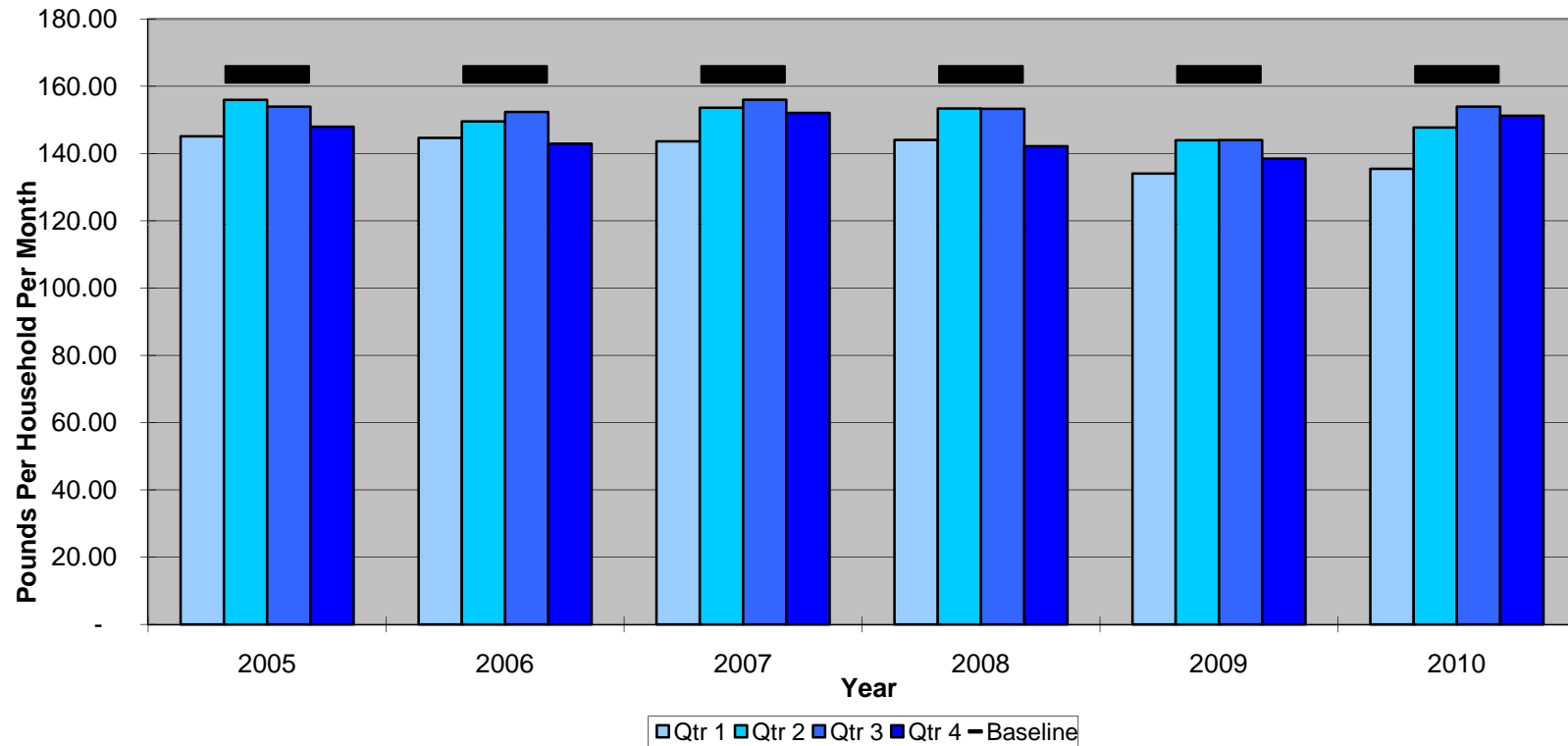


**Pierce County**  
**Public Works & Utilities**  
**Solid Waste Division**



# 2010 Statistics

Pierce County Residential Disposal

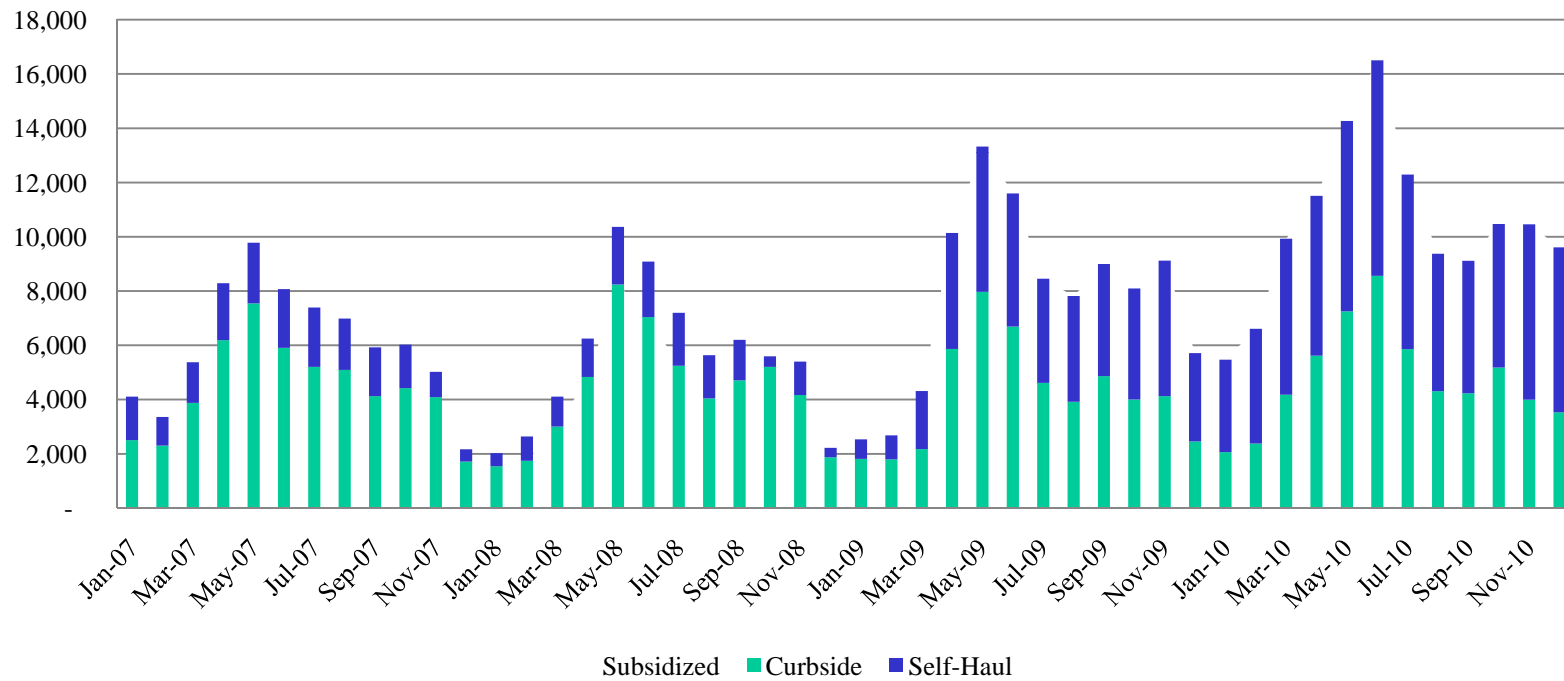


Pierce County  
Public Works & Utilities  
Solid Waste Division



# 2010 Statistics

## Subsidized Yardwaste Tonnage January 2007 to June 2010



**Pierce County  
Public Works & Utilities  
Solid Waste Division**



# Legislative Update

---

- Medicine Take-Back: SSB 5234 & HB 1370
- Carpet Product Stewardship – SB 5110
- Anaerobic Digesters – HB 1070
- Illegal Dumping – SB 5350
- Solid Waste Plans – SB 5360 & HB 1478
- Oregon Plastic Bag Ban – Oregon SB 536
  - Paper allowed w/ 40% recycled content; 5 cent charge



Pierce County  
Public Works & Utilities  
Solid Waste Division

