

SALMONID HABITAT LIMITING FACTORS ANALYSIS

CHAMBERS-CLOVER CREEK WATERSHED

**(Including Sequelitchew Creek and Independent
Tributaries)**

WATER RESOURCE INVENTORY AREA

12

**Judy Runge
Marc Marcantonio
Monty Mahan
Pierce Conservation District**

June 2003

THIS PAGE INTENTIONALLY LEFT BLANK FOR DUPLEX PRINTING

ACKNOWLEDGEMENTS

Completion of this report would not have been possible without the support and cooperation of the Technical Advisory Group (TAG) and other contributors. Their expertise and familiarity with the sub-watersheds within Water Resource Inventory Area (WRIA) 12, and their interest and willingness to share their knowledge, allowed us to complete this report. The TAG participants and other contributors included:

Technical Advisory Group

Chuck Baranski, WDFW
Dave Clouse, Ft. Lewis
Rich Eltrich, WDFW
Tom Kantz, Pierce County
Russ Ladley, Puyallup Indian Tribe
John Long, WDFW
Darrell Mills, WDFW
Dave Molinar, WDFW
Travis Nelson, WDFW
Dave Renstrom, Pierce County
Fred Norman, (retired WDFW)
Paul Russell, Clover Creek Council

Advisory Committee

Jeanette Dorner, Nisqually Indian Tribe
Eron Drew, Muckleshoots Indian Tribe
Bob Duffy, Washington State Department of Ecology
Valerie Elliott, McChord AFB
Andrew Fritz, Clover Park Technical College
Ray Hanowell, Tacoma/Pierce County Health Department
Scott Hansen, Puget Creek Restoration Society
Roy Huberd, Pierce County Water Programs
Hans Hunger, Pierce County Water Programs
Keith Keown, WDFW
Caroline Kim, City of Fircrest
Bart Madison, Trout Unlimited
Al Schmauder, Clover Creek Council
Fred Tobiason, Clover Creek Council
Jill Whitman, Pacific Lutheran University
Marc Wicke, Tacoma Power

Special thanks go to Ed Manary, who provided the resources and support to make this report possible. Also, our thanks go to Jennifer Cutler of the Northwest Indian Fisheries Commission for preparation of the GIS maps included in this report. Lastly, thanks to Don Haring, John Kerwin, and Ron McFarlane for providing technical expertise and advice in the completion of this report.

TABLE OF CONTENTS

ACKNOWLEDGEMENTS	3
TABLE OF CONTENTS	4
LIST OF TABLES and FIGURES.....	6
TABLES	6
FIGURES.....	6
LIST OF MAPS	7
(Maps are linked to separate Map files included with this report).....	7
EXECUTIVE SUMMARY	9
INTRODUCTION	9
Discussion of Habitat Limiting Factor Elements	10
THE RELATIVE ROLE OF HABITAT IN HEALTHY POPULATIONS OF NATURAL SPAWNING SALMON	16
WATERSHED DESCRIPTION AND CONDITION FOR STREAMS IN WRIA 12	21
Location and Watershed Characteristics	21
Chambers-Clover Creek.....	23
Sequalitchew Creek	24
Independent Tributaries	26
Climate/Hydrology	26
Geology (from PCPWU 1997).....	27
Land Use	28
DISTRIBUTION AND CONDITION OF SALMON, STEELHEAD, AND BULL TROUT/ DOLLY VARDEN STOCKS	31
General.....	31
Chinook.....	31
Chum.....	32
Pink	34
Coho.....	34
Winter Steelhead.....	35
Sockeye.....	35
Char (Bull Trout/DollyVarden)	36
Cutthroat Trout.....	36
Other Species	36
HABITAT LIMITING FACTORS BY SUB-WATERSHED.....	37
Introduction.....	37
Habitat Elements Included in this Analysis of Salmonid Habitat Limiting Factors by the Washington State Conservation Commission:	38
Watershed Discussions	40
WRIA 12 Marine Nearshore.....	41
Chambers Creek 12.0007.....	41
Clover Creek 12.0007	50
NF Clover Creek 12.0014, Unnamed 12.0015.....	50
Peach Creek (1225381471972).....	66
Leach Creek 12.0008	67
Flett Creek 12.0009.....	70
Ponce de Leon Creek 12.0010	74
Morey Creek 12.0011	75
Spanaway Creek 12.0012.....	79

Sequalitchew Creek 12.0019.....	82
Puget Creek 12.0001.....	89
Fifth Street Waterway (1226069471699).....	92
Gravelly Lake.....	94
ASSESSMENT OF HABITAT LIMITING FACTORS.....	95
Salmonid Habitat Concerns.....	95
Habitat Condition Rating.....	96
Habitat Restoration Potential.....	99
HABITAT NEEDING PROTECTION.....	100
DATA GAPS.....	101
BIBLIOGRAPHY/LITERATURE CITED.....	103
ACRONYMS AND ABBREVIATIONS USED IN THIS REPORT.....	109
APPENDICES.....	110
APPENDIX A.....	111
CHAMBERS/SEQUALITCHEW CREEK (WRIA 12) SALMONID DISTRIBUTION.....	111
APPENDIX B.....	113
SALMONID HABITAT CONDITION RATING STANDARDS FOR IDENTIFYING LIMITING FACTORS.....	113
APPENDIX C.....	119
Intermittent Flow On Clover Creek: Causes and Possible Solutions.....	119
APPENDIX D.....	122
Fledgling Coho run killed.....	122
APPENDIX E.....	124
WRIA 12 Elevation Model.....	124
WRIA 12 Land Use/Land Cover Map.....	124
APPENDIX F.....	128

LIST OF TABLES and FIGURES

TABLES

Table 1: Data Summary of Chambers Creek Riparian Corridor.....	44
Table 2: Surface Water Quality Standards for Washington Class A Waters	47
Table 3: Data Summary of Clover Creek Riparian Corridor	57
Table 4: Data Summary of the North Fork Riparian Corridor.....	58
Table 5: Data Summary of Leach Creek Riparian Corridor	68
Table 6: Data Summary of Flett Creek Riparian Corridor.....	72
Table 7: Data Summary of Morey Creek Riparian Corridor	77
Table 8: Water Quality Measured in Morey Creek on McChord AFB.....	77
Table 9: Data Summary of Spanaway Creek Riparian Corridor.....	80
Table 10: Data Summary of Murray Creek Riparian Corridor	84
Table 11: Data Summary of Puget Creek Riparian Corridor.....	91
Table 12: Assessment of Habitat Limiting Factors for Salmonid-Bearing Watersheds within WRIA 12..	98
Table 13: WRIA 12 Salmonid Distribution Table	112

FIGURES

Figure 1: Location of the Chambers/Clover Creek watershed (WRIA 12) in Washington State	8
Figure 2: Communities in WRIA 12.....	22
Figure 3: One of the 12 ft diameter pipes rolled in place in the McChord Airbase channel in 1939	23
Figure 4: Diagram of Diversion Dam / Canal Structure at Outlet of Sequelitchew Lake.....	25
Figure 5: WRIA 12 2000 Census Population Distribution	30
Figure 6: Chambers Creek hatchery Chinook trap counts (courtesy of John Long, WDFW)	32
Figure 7: Chambers Creek winter chum salmon escapements (courtesy of John Long, WDFW)....	33
Figure 8: Chambers Creek Coho salmon escapements (courtesy of John Long, WDFW)	35
Figure 9: Model of Chinook Production in Chambers Creek (WADSC 2001)	42
Figure 10: Clover Creek near C Street bridge, September 2002.....	52
Figure 11: A dam created a pond and a barrier to fish.....	53
Figure 12: Weirs now provide access for migrating salmon.....	53
Figure 13: Large salmon (reported as Coho) and trout caught in Clover Creek near Pacific Avenue in November, 1936.....	55
Figure 14: Reed canary grass chokes the stream channel	57
Figure 15: A view of Clover Creek, looking west	60
Figure 16: A barrier located immediately under 75 th Street West.....	71
Figure 17: The barrier was removed and native plants placed along the banks.....	71
Figure 18: The concrete dam on Morey Creek	76
Figure 19: Planting site of riparian restoration project, March, 2000	85
Figure 20: Marc Marcantonio and Judy Runge take GPS readings at the mouth of the Fifth Street Waterway in Steilacoom	93

LIST OF MAPS

(Maps are linked to separate Map files included with this report)

Map 1. Chinook Distribution and Barriers

Map 2. Chum Distribution and Barriers

Map 3. Pink Distribution and Barriers

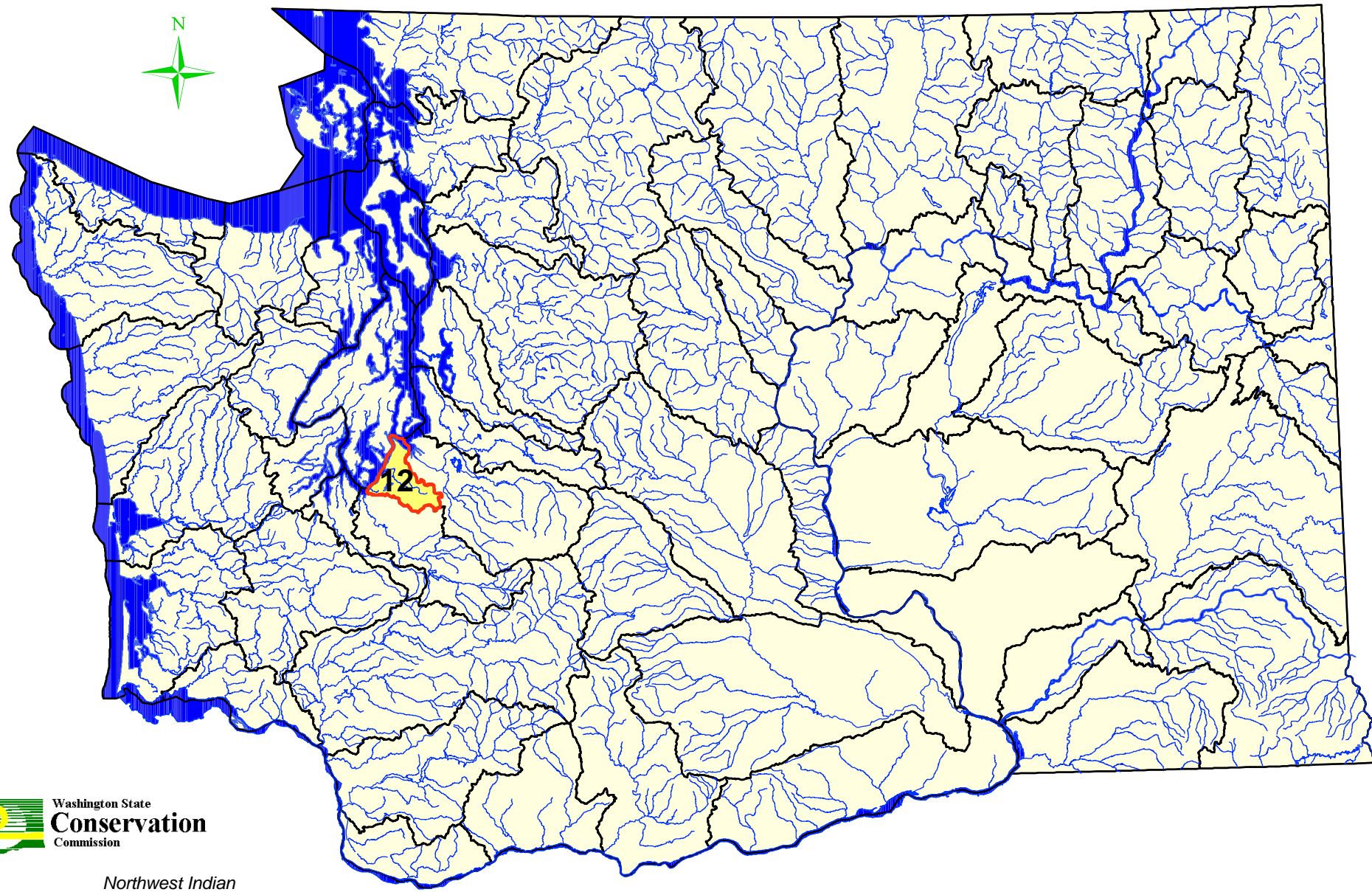
Map 4. Coho Distribution and Barriers

Map 5. Sockeye/Kokanee Distribution and Barriers

Map 6. Steelhead Distribution and Barriers

Map 7. Cutthroat Distribution and Barriers

Figure 1: Location of Chambers/Clover Creek Watershed (WRIA 12) in Washington State



Washington State
Conservation
Commission

Northwest Indian



Fisheries Commission

Location of WRIA 12 outlined in Red