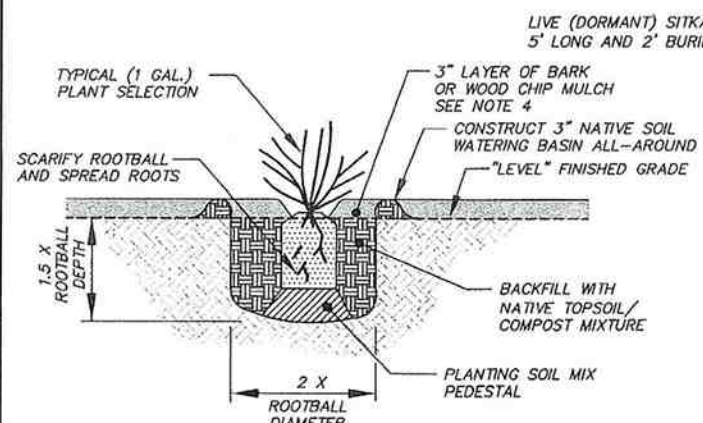
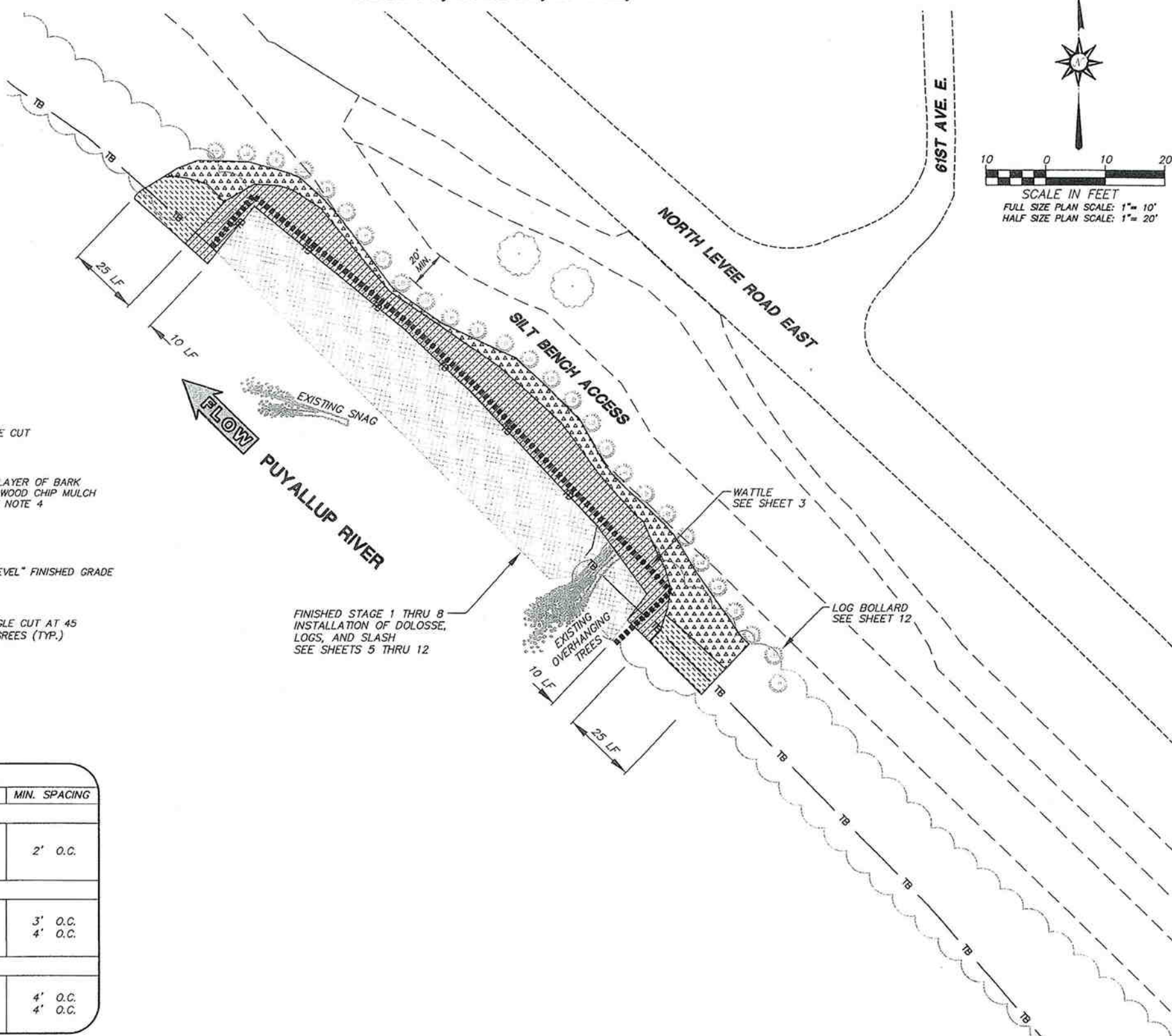
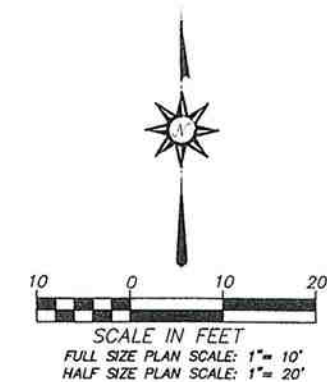


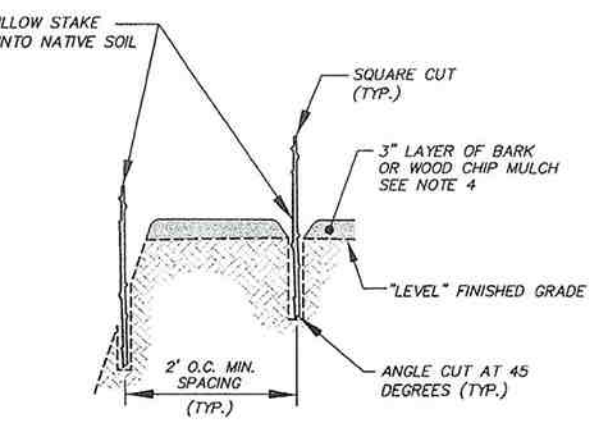
GENERAL PLANTING NOTES:

- PLANTING SHALL INCLUDE THE FOLLOWING:
 - INSTALLATION OF "PLANT SELECTION - TYPE AND SIZE"
 - NATIVE SOIL/COMPOST MIXTURE
 - BARK OR WOOD CHIP MULCH
 - WATERING
 - CONSTRUCTION FENCE (REMOVAL)
- PLANTING SHALL BE DONE THE FIRST SPRING (MARCH 1) FOLLOWING THE COMPLETION OF THE STAGE 1 THRU 8 ACTIVITIES.
- ONCE PLANTS AND STAKES HAVE BEEN PROPERLY PLANTED THEY SHALL BE WATERED AS NECESSARY TO ENSURE SURVIVAL. WATERING SHALL BE REQUIRED ONCE A WEEK UP TO JUNE 1, AND TWICE A WEEK FROM JUNE 1 THRU OCTOBER 31 AT A MIN. TO ENSURE SURVIVAL. SEE SPECIAL PROVISIONS "ROADSIDE RESTORATION" FOR WATERING MECHANISM. THE CONSTRUCTION FENCE SHALL REMAIN IN PLACE UNTIL OCTOBER 15 OR AS DIRECTED BY THE ENGINEER.
- APPLY 3" OF BARK OR WOOD CHIP MULCH (REMOVING ANY EXISTING VEGETATION BEFORE APPLICATION) OVER ALL "LEVEL" FINISHED GRADE PLANTING AREAS EXCLUDING AROUND BASE OF PLANT NOT TOUCHING PLANT STEM. BARK OR WOOD CHIP MULCH APPLICATION SHALL BE INCIDENTAL TO PLANT SELECTION, SEE SPECIAL PROVISION: "ROADSIDE RESTORATION".

SEC. 18, T. 20 N., R. 4 E., W. M.



PLANT SELECTION PLANTING DETAIL
NOT TO SCALE



LIVE STAKE PLANTING DETAIL
NOT TO SCALE

FINISHED STAGE 1 THRU 8 INSTALLATION OF DOLOSSE, LOGS, AND SLASH SEE SHEETS 5 THRU 12

PLANTING SCHEDULE					
SYMBOL	SCIENTIFIC NAME	PAY ITEM (COMMON NAME)	QTY	SIZE	MIN. SPACING
WILLOW STAKES PLANTING AREA					
	<i>Salix sitchensis</i>	PLANT SELECTION - SITKA WILLOW	350	LIVE STAKE	2' O.C.
LOWER RIPARIAN PLANTING AREA					
	<i>Salix lucida (lasioandra)</i>	PLANT SELECTION - PACIFIC WILLOW	50	LIVE STAKE	3' O.C.
	<i>Symphoricarpos albus</i>	PLANT SELECTION - SNOWBERRY	50	1 GAL.	4' O.C.
UPPER RIPARIAN PLANTING AREA					
	<i>Cornus sericea (stolonifera)</i>	PLANT SELECTION - RED OSIER DOGWOOD	40	1 GAL.	4' O.C.
	<i>Physocarpus capitatus</i>	PLANT SELECTION - PACIFIC NINEBARK	40	1 GAL.	4' O.C.

Date: Apr 23, 2009 10:13:12 AM
Drawing: P:\1360-100 SILT BENCH\DWG\1360-100 BASE.DWG
Xref:

DRAWING NO.	SURVEYED BY:	NO.	DATE	REVISION	BY	APPROVED
SEE SIDE STAMP	W&H PACIFIC					
DRAWN BY:	#1360-100-153					
SK,MM	DATE SURVEYED:					
DESIGNED BY:	2004					
AJF/JD/TN/AZ	SECTIONS 2007					
CHECKED BY:	BOOK NO.					
TA/AZ	---					
	DATE:					
	02/02/09					

ENTRIX
Down to Earth. Down to Business.
URS
1400 Century Square
1501 Fourth Ave. Seattle, WA 98101
Phone: (206) 438-2700 Fax: (206) 438-2699

Pierce County
DEPARTMENT OF PUBLIC WORKS AND UTILITIES
SURFACE WATER MANAGEMENT
2702 SOUTH 4th STREET, SUITE 201
TACOMA, WA 98409 7332
HAROLD BULLY, P.E. SURFACE WATER MANAGEMENT MANAGER

HANS P. HUNGER
PROFESSIONAL ENGINEER
10/14/09

LOWER PUYALLUP RIVER LEVEE REPAIR PROJECT
PLANTING PLAN
1360-100
SHEET 13 OF 13