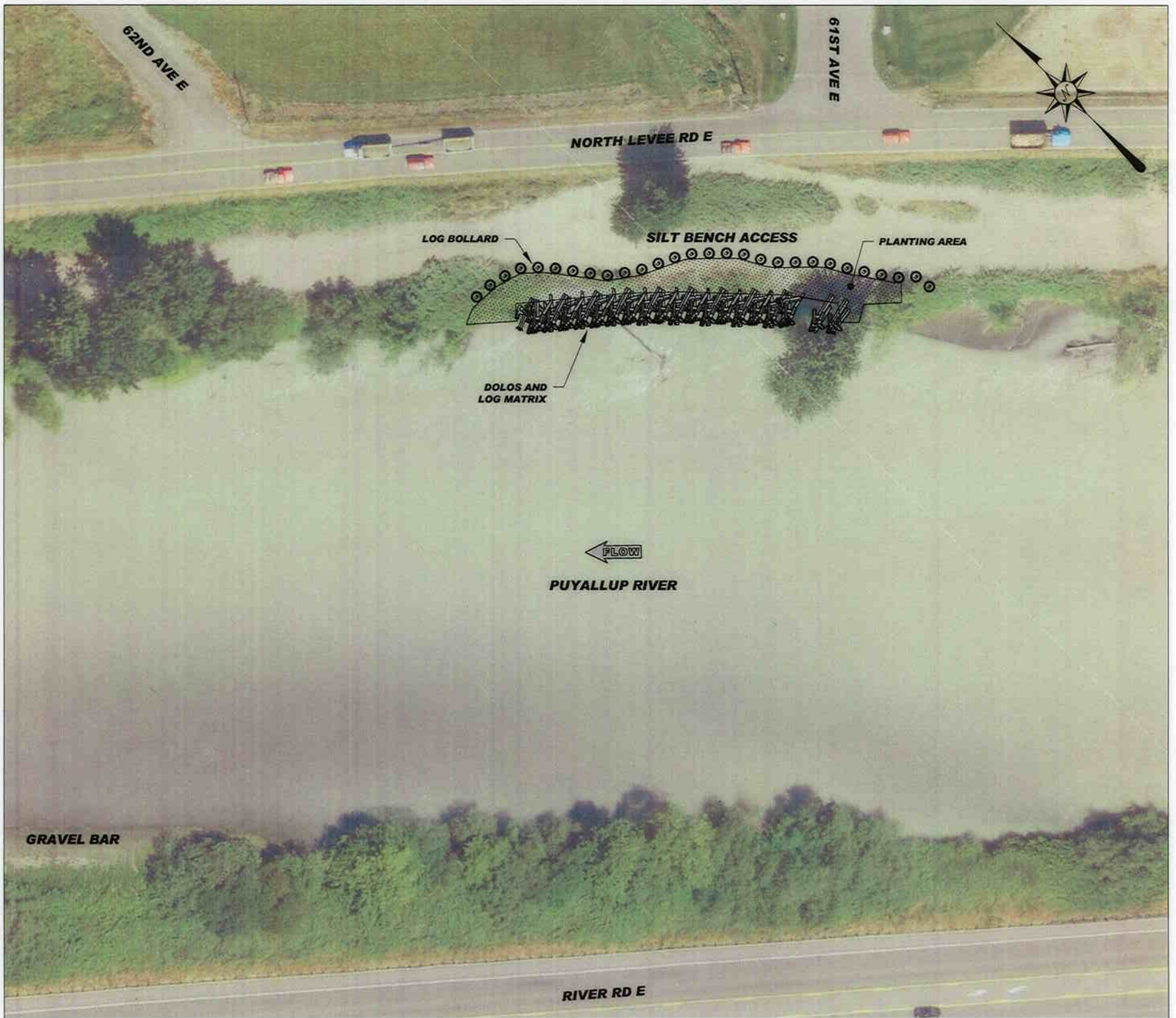


Lower Puyallup River Levee Repair Project



PROJECT DESCRIPTION:

This project provides for repair to the existing Lower Puyallup River Levee by protecting about 200 linear feet of eroding bank on the right bank of the Puyallup River at river mile 5.2 in the City of Fife. This work will include constructing dolos and log matrix, planting, and other work. The design will provide flood protection and fish habitat.

Construction Schedule: July 27, 2009 to August 31, 2009

Project Contractor: Richard Phillips Marine, Inc.

Contact Person: Al Zehni (253) 798-4677 or Tom Nelson (253) 798-4645

"CAUTION"
**"PLEASE KEEP OUT OF
CONSTRUCTION AREA"**

**THIS SITE IS UNDER CONSTRUCTION. IT IS
NOT SAFE TO ENTER THIS SITE. STAY OFF OF
DOLOS AND LOG MATRIX. BE SAFE.**



Pierce County

DEPARTMENT OF PUBLIC WORKS AND UTILITIES
SURFACE WATER MANAGEMENT
2702 SOUTH 42nd STREET, SUITE 201
TACOMA, WA 98409-7322