

Puyallup River Executive Task Force Summary Notes

Meeting #9 – August 31, 2009

Port of Tacoma Business Center, Fabulich Building

Task Force Members

Organization	Representatives in Attendance	Unable to Attend
Pierce County Executive Office	Pat McCarthy, Pierce County Executive	
Pierce County Council	Jeff Cox, Council Attorney	Joyce McDonald, Councilmember
Pierce County Chamber of Commerce	David Graybill, CEO	
Puyallup Tribe of Indians	Sylvia Miller, Councilmember Bill Sullivan, Director of Natural Resources Lisa Brautigam, Attorney Rory LaDucer, Director of Public Safety	
City of Tacoma	Mike Lonergan, Councilmember	
City of Fife	Barry Johnson, Mayor Steve Worthington, City Manager	
City of Puyallup	Don Malloy, Mayor John Knutsen, Councilmember Gary McLean, City Manager	
City of Orting	Ken Wolfe, Building Official	
City of Buckley	Pat Johnson, Mayor	
City of Sumner	Dave Enslow, Mayor Bill Pugh, Director of Public Works	
Port of Tacoma	Ted Bottiger, Port Commissioner	
Washington State Department of Transportation (WSDOT)	JoAnn Schueler, Project Development Engineer	
Washington State Department of Ecology (Ecology)	Dan Sokol, Floodplain Manager	
Washington State Department of Natural Resources (WSDNR)		Derrick Toba, South Puget Sound Shoreline District
US Army Corps of Engineers (Corps)	Kristen Kerns, Project Manager	Amy Gibbons, Project Manager

Other Attendees:

U.S. Representative Adam Smith

Matt Perry, Office of Rep. Adam Smith

Tom Young, Office of Rep. Dave Reichert

Harold Smelt, Pierce County Surface Water Management

Debby Hyde, Pierce County Public Works and Utilities

Brian Ziegler, Pierce County Public Works and Utilities, Director

Puyallup River Executive Task Force

Page 1

August 31, 2009

Puyallup River Executive Task Force Summary Notes

Chris Schutz, Pierce County Department of Government Relations
George Walk, Pierce County Department of Government Relations
Brynn Brady, Pierce County Government Relations
Steve Bailey, Pierce County Department of Emergency Management
Luke Meyers, Pierce County Department of Emergency Management
Jody Woodcock, Pierce County Department of Emergency Management
Mark Higginson, City of Puyallup, Engineer
Mark Palmer, City of Puyallup, Engineer
Jon Shimada, Cascade Water Alliance
Ken Fellows, Parametrix
Gil Hulmann, Abbey Road Group
Mary Lou Hodge, member of the public
Dick Dorsett, member of the public
Penny Mabie, facilitator
Rachel Patterson, note taker

Meeting Purpose and Overview

Pierce County convened the ninth meeting of the Lower Puyallup River Executive Task Force in Tacoma, Washington on August 31, 2009. This meeting focused on finalizing discussions regarding partnering with the U.S. Army Corps of Engineers (Corps), hearing from U.S. Representative Adam Smith on federal flooding actions, discussion of short-term flood protection actions, and local cost sharing for short- and long-term solutions. Approximately 45 people attended the meeting, held at the Fabulich Building in the Port of Tacoma Business Center.

Meeting Summary

Welcome

The meeting started at 9:35 a.m. with Penny Mabie, meeting facilitator, welcoming the group.

Brief introductions

Penny Mabie welcomed meeting attendees and asked Task Force members to introduce themselves. She reminded participants that there would be a period for public comment at the conclusion of the meeting.

Review meeting agenda and ground rules

Penny Mabie went over agenda items and reviewed two flow charts illustrating the role of the task force and its (1) pathway toward finding a solution, and (2) pathway toward funding, including short-term funding for the General Investigation (GI) Study and long-term funding for engineering and construction of the preferred alternative. The two charts are pasted at the end of this document.

Review July 31, 2009 meeting notes

The group approved the notes from the previous meeting.

Continued discussion on Corps partnering

Puyallup River Executive Task Force Summary Notes

Penny Mabie reminded participants that there are two decisions about partnering with the Corps: (1) a decision about whether the county should partner with the Corps, and (2) a decision about whether to focus on benefits to the lower eight miles of the Puyallup River or system-wide. She noted that there were some ETF members who still needed to report back on their organizations' discussions on the topic. ETF members provided the following updates:

- Penny Mabie mentioned that Derrick Toba from the Department of Natural Resources (DNR) was unable to attend but had communicated DNR's support for partnering with the Corps for a system-wide study.
- Ken Wolfe reported that the City of Orting had not yet made a decision and needed more information from the Corps on financial impacts and benefits of the study.
- John Knutsen reported that the Puyallup City Council had endorsed a decision to partner with the Corps for the system-wide study.
- Mike Lonergan reported that City of Tacoma had a staff recommendation to partner with the Corps but the city council had not taken any formal action.
- Dave Enslow reported that Sumner would be supportive of a river-wide study, but the city council had not formally approved partnering with the Corps.
- Harold Smelt noted that the Pierce County Council had been briefed on the issue but had not taken any formal action.

Kristen Kerns emphasized the need for local consensus and support, pointing out that lack of support can slow down a project by years. Dan Sokol supported Kristen's remarks, noting that Lewis County was unable to build consensus on a project and state funding was lost to another county.

Penny passed out a template for a letter of support from organizations to Pierce County in support of a partnership between the county and the Corps. She noted that Pierce County requests that organizations submit letters of support to the county to begin building the foundation of consensus.

Mike Lonergan suggested that it would be hard to get support from the Tacoma City Council without more information on the scale of the GI study and the approximate percentage Tacoma would be asked to contribute.

Ted Bottiger asked Pat McCarthy where the Pierce County Council is with regards to partnering with the Corps. Jeff Cox mentioned that the council has some concerns about the project timeline, how the funds will be distributed and the possibility that unincorporated parts of the county would finance large parts of the project.

Pat McCarthy stated that for the Pierce County Council, as well as other councils, the issue at hand involves a complex discussion, and that the ETF would need to champion a comprehensive solution for flooding problems and environmental issues. She reiterated County Council concerns about how funding would be collected and distributed, noted that Sean Bunney and Joyce

Puyallup River Executive Task Force Summary Notes

McDonald had sent letters expressing these concerns. She pointed out that aside from uncertainty about distribution and funding sharing, there is a countywide need to find solutions.

Penny clarified that, for the purpose of the funding discussion, the ETF will operate with the assumption that the county will move forward with the Corps process.

John Knutsen asked what the state of the river would be in five years if left unattended and noted that federal, state and local delegations may change. He expressed support for short-term actions. Mike Lonergan reiterated that actions must be taken both now and later, and that the group agrees that something must be done. He suggested the task force serve to coordinate conversations about actions among jurisdictions, and pointed out that a system-wide, long-term answer to the problem will not happen right away. Dave Enslow mentioned that Sumner had experienced floods several of the past few years and emphasized that doing nothing is not an option from the City of Sumner's standpoint.

Harold Smelt stated that the River Revitalization Task Force was wrapping up their efforts and recommendations and asked whether it would be worthwhile for someone to come and brief the ETF on that group's findings. The group agreed that this could be an agenda item for the next meeting, with an invitation to Matt Richardson and Shawn Bunney, who served as chair and vice chair of the task force. Dave Enslow noted that although hearing from other groups would be helpful, it is important to remember that this group is the one that needs to deliver solutions.

Local Cost Sharing

Penny initiated a conversation about cost sharing for the local match portion of the GI study. She provided an overview of the goals of the GI study, and noted that a 50 – 50 local match would be required.

Harold Smelt handed out a table of tax assessment rates for cities, towns and unincorporated Pierce County to use as a basis for discussing and determining funding allocations to pay the local share should the county agree to partner with the Corps. The table depicts estimated annual contributions toward the Corps GI study from jurisdictions directly affected by Puyallup River flooding. Harold Smelt noted that if there were a decision to form a flood control zone district, there would be many details to figure out. The table includes a county-wide tax rate of 10 cents per \$1,000 assessed value. The table also assumes no contributions from other potential funding partners, including WSDOT, the Puyallup Tribe, and the Port of Tacoma, and contributions from these partners would change the annual contribution values.

Bill Sullivan asked the Corps how many people might be engaged in the work, and whether local resources including the Tribe could be used. He said the Puyallup River has been studied multiple times, and that the information from those studies could feed into the process and shorten the timeline. Kristen Kerns replied that a full project development team would be devoted to the project. Although it would be important to adhere to strict Corps milestones and processes, existing information could be plugged in. Randy Harrison asked whether local governments could help fund positions at the Corps through an interagency agreement. Kristen Kerns said that an interagency agreement might be possible, but emphasized that each agency has different processes and standards, which may not meet Corps standards. Ted Bottiger noted that the Port of Tacoma

Puyallup River Executive Task Force Summary Notes

has a contract with the Corps that works well. Harold Smelt said that Pierce County also has a formal relationship with the Corps that may help expedite the review of permits. Mike Lonergan pointed out that the table passed out is based on taxable value but that Tacoma, for example, would be over billed because only a small portion of it is adjacent to the river. Harold Smelt pointed out that this scenario also applies to unincorporated Pierce County. He reiterated that the short-term funding solution would address how to pay for the GI study, but that there would be other possibilities for longer term funding. Harold clarified that the table illustrates an estimated annual cost to jurisdictions.

Pat McCarthy pointed out that, although larger jurisdictions often contribute more, a large portion of funding often goes to those larger jurisdictions. Mike Lonergan clarified that the formula presented for allocating costs for the GI study is not sellable since it assumes that communities that partly abut the river should pay, while assuming communities not abutting the river receive no benefits from flood protection. Harold Smelt said he could ask GIS staff to pull data just from the area in the 100 year flood plain, although this would decrease Pierce County's share of the funding.

Gary McLean said it might be helpful for a sub-group to work with the Corps on expectations so that ETF members do not have unreasonable expectations, and to help green light short-term solutions. Regarding funding, the City of Puyallup thinks that everyone should be involved. In King County, for example, Vashon Island is paying the tax for the flood control zone district.

Penny Mabie pointed out that there are three main types of funding that need to be considered: short-, mid-, and long-term, and that the group would need to decide who should be contributing to funding at each of these levels.

Federal Action

Harold Smelt welcomed U.S. Representative Adam Smith and thanked him for taking the time to present to the ETF on congressional actions to address flooding.

Rep. Smith welcomed the ETF and thanked the group for the opportunity to present. He outlined flood protection needs along the White, Green and Puyallup Rivers, and gave an overview of current federal flood protection efforts in King County, including work on the Howard Hansen dam, improvements to the levees near Pacific, and improvements to the dike and levee system near Kent. He said that the federal delegation will be meeting with King County Executive Triplett to discuss potential solutions and federal assistance. He expressed interest in working with Pierce County and noted that Puyallup River short-term solutions are needed, specifically dike and levee improvements. He said that the delegation would like to help with funding and that there might be federal stimulus funding available but that there would need to be a plan in place and local match would need to be addressed. He noted short-term projects would need to be approved by the Corps to avoid conflicts between long- and short-term efforts. He brought up the sediment removal issue, sediment buildup and lowered river capacity, and Tribal and environmental concerns. Rep. Smith noted that he has also been working closely with Rep. Reichert on flooding issues. He asked for questions and comments from the group.

Puyallup River Executive Task Force Summary Notes

Harold Smelt provided a brief overview of the ETF and noted that the group has been moving toward a consensus regional solution and course of action since July 2008. He asked task force members to introduce themselves and their positions.

The following questions and comments were heard from task force members:

Dave Enslow pointed out the White River also affects the City of Sumner. Ken Wolfe mentioned that the City of Orting expects to have a fully designed and permitted setback levee project by next year.

Mike Lonergan said that based on Rep. Smith's comments, it appears King County is closer to having a short-term plan for flood protection. Rep. Smith agreed with this assessment and noted that a King County plan was in development.

Ted Bottiger noted that the Fabulich Building was sandbagged to protect from flooding and that it serves as an example of a facility that has potential to flood. John Knutsen pointed out that sewage treatment plants are also highly at risk of flooding, both in Puyallup and other jurisdictions such as Tacoma. He noted that there are individuals willing to pay for sediment removal.

Rep. Smith asked what major impediments would be to doing sediment removal.

Bill Sullivan pointed out that there are three species in the Puyallup River that are listed under the Endangered Species Act (ESA). He said that sediment removal is not a long-term solution because of issues in the upper watershed from logging. He noted that sediment removal would cost a great deal for a small amount of benefit. He reiterated that the ETF had agreed to look at the entire river basin for a long-term solution to the problem. He said that the group must look at what makes the most sense from a benefit to cost ratio. He also mentioned that glacial melt deposits a large amount of sediment in the river.

Rep. Smith asked for ESA permitting details and costs for sediment removal in the lower portion of the river. Bill Sullivan pointed out that large amounts of material would need to be removed and the ergonomics of staging the effort would be challenging. Kristen Kerns said that there would be large regulatory hurdles associated with sediment removal. Long-term sediment removal has been determined as not feasible by the Corps reconnaissance study since expensive maintenance and operation expenses must be covered by the local sponsor.

Dan Sokol said the Department of Ecology's concerns about sediment removal include water quality issues, Shoreline Master Program provisions regarding dredging, storage issues and Washington State Department of Fish and Wildlife hydraulics permitting issues.

Rep. Smith asked what a 50-year solution would look like.

Lisa Brautigam pointed out there is no one solution. A 50-year solution will need to address multiple issues, including land use and forestry issues. There is a need to balance different types of solutions and determine which are most effective in the short- and long-term. She pointed out

Puyallup River Executive Task Force Summary Notes

dynamics associated with levees and potential for levee failure are another issue associated with sediment removal. Kristen Kerns reiterated that there would be no one solution, but that a large package of different solutions would need to be implemented.

Rep. Smith noted that deciding on a specific plan of action would be critical to receiving federal funds.

Randy Harrison pointed out Tribal and Corps concerns about the regulatory environment are often parallel. He noted that the county was unable to access federal stimulus funds for floodplain easements from the Department of Agriculture. Randy Harrison noted that if this money were available, the county could start purchasing land to implement setback levees for 32 identified sites. Rep. Smith expressed confidence that there would be stimulus money available in the next year for this sort of short-term flood project.

Dave Enslow noted sand bars and debris building up on the river near the City of Sumner. He said that removing sand bars and wood debris seems like a simple solution. Bill Sullivan pointed out that the Puyallup River is critical habitat area, and the sediment removal process would have to be maintained annually. Kristen Kerns noted that above water areas are not necessarily above the high water mark, which creates ESA permitting difficulties.

Lisa Brautigam said that needed ESA analysis has predominantly not been done for the Puyallup River. She asked whether there would be any federal stimulus funding available for non-shovel-ready projects that could help fund river analysis and studies which would move long-term solutions forward. Rep. Smith replied that he would look into this, and that it may be a possibility.

Ted Bottiger and John Knutsen voiced support for sediment removal and annual maintenance to protect surrounding areas from flooding. Bill Sullivan said that there would not ever be enough money to dredge the river effectively.

Harold Smelt suggested sending federal funds to state programs already in place such as the Department of Ecology's flood control assistance program (FCAP).

Mike Lonergan reiterated that Rep. Smith was requesting a specific short-term plan, and asked whether there was a ballpark cost, timeframe and percentage impact on flood control for the existing 32 setback levee sites. Harold said the projects had been scoped and prioritized, and that this information was available. Rep. Smith said although this meeting provided a good conversation about the setback levees, they would need to see a consensus on these projects as the place to start. Bill Sullivan said that setback levee size influences impacts on flood control, and pointed out that no flood problems have been experienced near the Soldiers Home setback levee.

Penny Mabie referenced comments from Lorin Reinelt at a previous ETF meeting stating the 32 setback levee sites, if constructed, would provide approximately 15 percent of the capacity of Mud Mountain Dam.

Steve Bailey concurred with Mike Lonergan's remarks about setback levees. He noted that the dredging permitting process would slow down the overall process, and that setback levees would

Puyallup River Executive Task Force Summary Notes

seem to be a better first priority. Steve Bailey asked Rep. Smith when he would like to see a list of priorities. Rep. Smith reiterated that the process for seeking funding for solutions could start right away, as soon as needed information was received. He gave a brief overview of how stimulus funding is appropriated, and noted other potential resources that might be able to fund the project.

John Knutsen said City of Puyallup has been contacted by land owners with land available for high water storage. Rep. Smith referenced the King County process for setting aside floodplain areas.

Bill Sullivan noted that setback levee areas would be better candidates for sediment removal than the main river channel.

Pat Johnson stated a concern about cost for smaller cities. She reiterated there are many things that smaller jurisdictions can do to limit flooding if funding becomes available. For example, Buckley could build a stormwater detention pond along the diversion dam between Buckley and Lake Tapps. Smaller jurisdictions on the tax table lack funding to contribute. Some smaller jurisdictions such as South Prairie, however, have experienced a lot of flooding damage. She noted that City Transit from Kent used to mine silt from the flume near Lake Tapps, but found no commercial value for the sediment, so discontinued the practice.

Ken Wolfe stated the Orting Calistoga levee setback project encompasses three of the 32 setback levee projects prioritized by Pierce County. These projects have been fast tracked thanks to the Pierce County TetraTech study and work done by USGS and the Corps. The Calistoga levee setback area represents more than 60 acres. Ken Wolfe noted that when Puyallup River levees were originally built, they were constructed on the inside rather than the outside of the river's flood zone, which contributed to the flooding problem in the first place.

Gary McLean noted that benefit to cost ratio is an issue that must be addressed and that there are some places that people and businesses should not be located. In many cases, not allowing for development is a better solution from a benefit to cost ratio standpoint, although these decisions require difficult conversations.

Rep. Smith acknowledged the group's remarks and noted that no decision will please everyone. He reiterated the importance of making a clear decision, moving forward and being as united as possible.

Harold Smelt stated that Pierce County would like to send a letter to Rep. Smith recapping the conversation and outlining priorities for flood protection projects. He pointed out that the ETF must take into account that short-term funding could conflict with long-term efforts, and ensure a cooperative agreement with the Corps.

Bill Sullivan and Lisa Brautigam reiterated that a river habitat conservation plan (HCP) analysis, which would help overcome the ESA regulatory hurdle, had not yet been completed for the Puyallup River.

Puyallup River Executive Task Force Summary Notes

Penny recapped the potential short-term projects recommended by the group, which were as follows:

- The 32 setback levees identified and prioritized by Pierce County
- ESA analysis of the Puyallup River
- Department of Ecology FCAP efforts
- Acquisition of floodplain areas
- Sediment removal, acknowledging significant issues

Short-term actions

Penny asked jurisdictions to share their current flood control activities. The following activities were mentioned:

- Gary McLean, City of Puyallup:
 - Ciscoe Morris's radio show featured a City of Puyallup rain garden project. Rain gardens were retrofitted to seven local homes. Thirty percent of flooding is localized in nature and rain gardens help prevent stormwater from entering creeks.
 - Puyallup received a grant from Washington State University (WSU) extension to study low impact development (LID) strategies such as porous concrete for on-the-ground solutions in the flood plain. Gary said he will share the results of the study.
 - Puyallup is evaluating land use regulations. The city is focusing on code improvements and regulations to identify areas where it should be more difficult to build and changing codes so that they are friendly to LID. The city is looking at amendments to allow instead of prohibit solutions such as rain gardens, biosoils and green ribbons.
- Steve Worthington, City of Fife:
 - Fife adopted the draft flood plain map and incorporated updates into the development codes. Mayor Johnson and the council adopted a further update on LID. LID is being required, unless a developer can demonstrate why it cannot be done.
 - Fife is seeking bids to build a berm to protect the wastewater pump station, which was threatened in the last flooding event.
 - An engineering team is looking at temporary flood barrier systems to protect critical city facilities and threatened areas of the community.
 - Fife received a Category Five rating in the National Flood Insurance Program's Community Rating System, which results in a 25 percent premium discount to anyone in Fife who has flood insurance through the federal government.
 - The Fife City Council recently met with the councils of Milton and Edgewood about sharing shelter for emergency planning efforts.
- Ken Wolfe, City of Orting:
 - Orting is at 100 percent design on the Calistoga setback levee project.

Puyallup River Executive Task Force Summary Notes

- Orting received a \$50,000 grant from the WA Department of Ecology to replace a 42-inch outfall built in the 1960s.
- Orting is working with the Pierce County Department of Emergency Management on a Worksource Federal Grant, which employed five people working on flood impacts from January 2008 through February 2009.
- Orting received a Class Six rating in the National Flood Insurance Program's Community Rating System.
- Orting adopted a comprehensive flood hazard mitigation plan, which identifies risks and allows the city to apply for federal funds.
- Orting is focusing on communicating information to the public by posting the levee setback project on their Web site and working with the school district to implement an environmental education program on flood protection and salmon.
- Bill Pugh, City of Sumner:
 - Sumner is placing stormwater regulations into city code.
 - Sumner completed a stormwater outfall and treatment project in concert with SR 410 work.
 - Sumner used community block grant money from Pierce County for design and permitting for levee improvements in the Rainier Manor area of the River Grove community.
 - Sumner is applying for hazard mitigation funding to raise a floodwall around their wastewater treatment plant, which came within half a foot of flooding in January 2009.
 - Sumner received money for a feasibility study of a setback levee across the Puyallup from the River Grove area and hopes to receive more funding for design of that project.
- Rory LaDucer, Puyallup Tribe:
 - The tribe approved an emergency management committee.
 - The tribe is working with elders and other departments to meet with vulnerable populations and address special needs.
 - The Puyallup Tribe will be putting on a safety fair in concert with the casino.
 - The tribe is working with Pierce County Department of Emergency Management regarding training and emergency management plans.
 - The tribe applied for a hazard mitigation grant to help prepare their plan.
 - The tribe is applying for National Flood Insurance Program.
 - Tribal staff are going door to door in at-risk areas to provide flood kits and emergency contact information.
- Dan Sokol, WA Department of Ecology:
 - Although budget cuts reduced FCAP funds by over 50 percent, the grant evaluation committee was able to fund two Pierce County projects, including the Orting

Puyallup River Executive Task Force Summary Notes

stormwater outfall and a Town of Wilkeson project. The state managed to squeeze 13 projects out of limited funds.

- Mike Lonergan, City of Tacoma:
 - Tacoma is updating development regulations, including 2010 floodplain ordinance updates with higher local standards, compensatory storage and whether there are areas in the Tacoma area that should be regulated as floodway. The ordinance update will examine the alignment of Tacoma with other areas.
 - Tacoma City Council will consider non-structural recommendations considered by the ETF.
 - Mapping efforts are building a foundation for regulatory tools needed for developing needed tools and a comprehensive flood hazard management plan.
 - The current county Flood Hazard Management Plan is over 20 years old and does not include the portion of the Puyallup River in Tacoma. Tacoma is working to amend emergency response plans, including temporary diking of the main sewage treatment plant, and plans to complete a permanent dike of the facility.
- Luke Meyers, Pierce County Department of Emergency Management:
 - Pierce County applied for a Department of Labor National Emergency Grant of up to \$2.1 million, currently being used in part for the Orting Workforce program. These grant funds are an opportunity to put the long-term unemployed back to work with flood protection-related projects including restoration, community outreach, etc. Projects with labor relating to flood protection can still be submitted to Pierce County.

Steve Worthington announced a flood preparedness seminar and symposium in King County for the business community. The flyer was distributed and circulated as a PDF.

Local funding

Penny asked the group to focus on short-term, local funding. Harold Smelt noted that the county had not yet had conversations with other potential funding partners including WSDOT, the Puyallup Tribe of Indians and the Port of Tacoma. Mike Lonergan noted that participation from other local partners would be symbolically important. He commented that smaller jurisdictions such as South Prairie and Wilkeson have an impact on flooding in the Puyallup basin.

Lisa Brautigam noted a need to present to the Tribal Council and requested more information on the timeline for local match. Harold Smelt noted that the conversation with local partners would begin after Pierce County enters into an agreement with the Corps and said he hoped that Corps funding would start coming in as early as 2010.

Dave Enslow questioned whether funding should be sought only from those in the flood plain or countywide. He noted the need to discuss how solutions would be prioritized between jurisdictions.

Puyallup River Executive Task Force Summary Notes

There was a conversation on the difference between the need for short-term funding for the Corps GI study, and capital funding for design and construction. Penny reminded the group that short-term funding for the GI study must fill the gap before a revenue generator, such as a flood control zone district, could be put into place. The short-term funding mechanism could be something like an inter-local agreement between Pierce County and jurisdictions about cost sharing until the longer-term funding plan is put into place.

Steve Worthington asked whether local services and staffing could count as local match, and Harold Smelt affirmed. Steve pointed out that arriving at an agreement between all county jurisdictions may take a long time. He noted that Fife would need to invest more than the amount projected in the tax table into city staff to implement a local solution. Dave Enslow agreed that Sumner would be expending money for staff anyway and supported moving a solution forward.

Bill Sullivan asked whether the county could use stormwater fees collected from unincorporated Pierce County for the short term. Harold affirmed that these funds would probably be used to cover unincorporated Pierce County's share, but that county council members did not support unincorporated Pierce County taking on an undue burden of the expenses.

Harold asked whether there would be other scenarios people would like to consider so that the numbers could be developed prior to the next meeting.

Ted Bottiger noted that county parcels are currently assessed a conservation district permit fee of \$5.00 per parcel, and asked whether an additional fee could be assessed. Harold Smelt confirmed that the county raises approximately \$500,000 per year from these fees. Ted asked whether an additional \$5.00 per parcel could be assessed to help cover short-term costs. Mike Lonergan noted increasing fees would require a legal precedent. He agreed that the existing tax table values seemed reasonable.

Harold asked that the City of Tacoma and Port of Tacoma have a conversation about how much each agency should contribute.

Barry Johnson reiterated that the study needs to move forward, and waiting on countywide approval would take too long. He pushed for an expedited process if possible. Kristen Kerns stated expediting the process would be difficult. Urgent projects such as Howard Hansen Dam are not going through a GI study but it would be difficult to approach the Puyallup River project with anything other than a GI study. She reiterated that the Corps must adhere to the existing process.

Penny asked whether the Corps could provide a list of things that local sponsors can do to keep the process moving. Kristen said that she would put together a list of items. She also noted that in-kind services are now allowed during the design and construction phase, which is speeding up the process in many cases.

Action Items:

- Pierce County will follow up with a letter to Rep. Smith recapping the conversation and outlining priorities for flood protection projects.

Puyallup River Executive Task Force Summary Notes

- Pierce County will follow up with more information on GI study timeline and local funding responsibilities.
- Send invitation to Shawn Bunney and Matt Richardson to brief the ETF on the Pierce River Revitalization Task Force's findings.
- Harold Smelt will add information to the taxable value table that shows what percentage of a city's tax base is located in a mapped flood prone area.
- Kristen Kerns will follow up with a list of potential in-kind services for local sponsors.
- The Port of Tacoma and City of Tacoma will follow up with a conversation about cost sharing.

Agenda topics for next meeting:

- Mid-term funding solutions
- Cost, timeframe and benefits of Pierce County-prioritized setback levee projects
- Briefing from Pierce County River Revitalization Task Force

Next meeting

It was agreed that the group will meet within three to four weeks, likely on Friday, Sept. 18 or Monday, Sept. 21, 2009.

Public comment

Members of the public were encouraged to share their comments with the Task Force and were asked to keep their comments to 2 – 3 minutes.

- John Shimada, Cascade Water Alliance – Sean Bunney recommended that we attend this meeting as we will be purchasing Lake Tapps and property on the White River from Puget Sound Energy. We face many of the same issues that the Puyallup River faces, including dikes surrounding the lake. There are things we can do to manage the Lake Tapps facilities that would impact the Puyallup basin and things you do in places, such as Mud Mountain Dam, that impact us. We would like to be engaged in discussions and plans and are interested in partnering with the task force.
- Gil Hulsmann, Abbey Road Group – I represent about 400 acres of property owners, for setback levees four, five and 17. I am here to keep land owners informed about what is going on. We are concerned that there are no notices going out to property owners. Linden Golf Course and the Knutsen rhubarb farm are both properties that we represent. Land owners are volunteering to give their property for floodplain, but no one is talking to them. Property owners are concerned about paying double stormwater fees. Property owners need to know how they are getting credits for setback levees. There are current regulations that will not allow us to put storm facilities in areas zoned for farming. I highly recommend you send the letter of support to property owners as well as cities. We can have plans ready in a month for flooding areas and setback levees. I will follow up with a letter to your facilitator with some of these issues. We can help address issues including

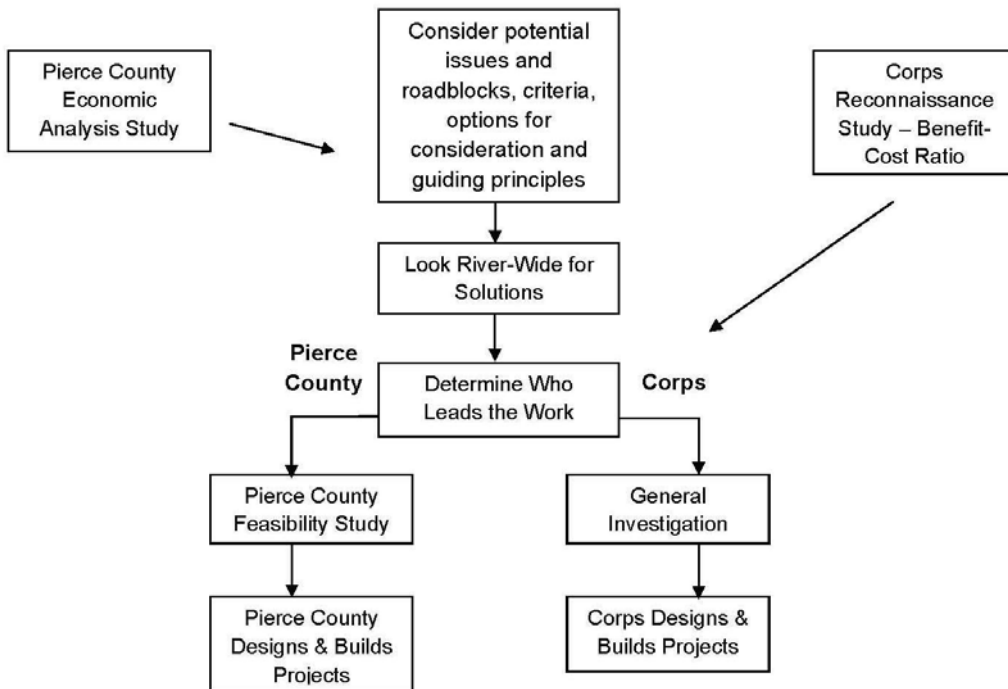
Puyallup River Executive Task Force Summary Notes

flooding, open space credits and recreational needs. If the county can receive credit for gifts in kind, that will also help.

Adjourn

The meeting was adjourned at 12:26 p.m.

Pierce County Flood Protection Goal: Recertification of the Flood System Solutions Pathway



Puyallup River Executive Task Force Summary Notes

Pierce County Flood Protection Army Corps of Engineers Funding Pathway

