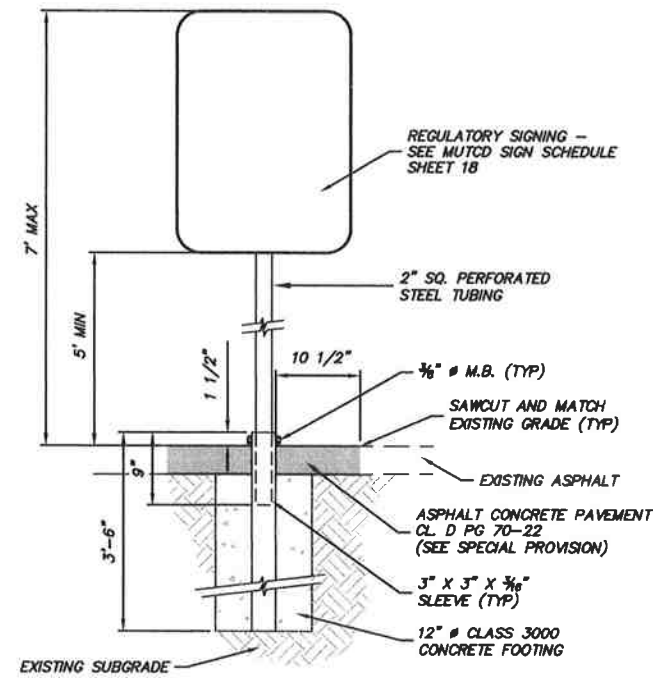
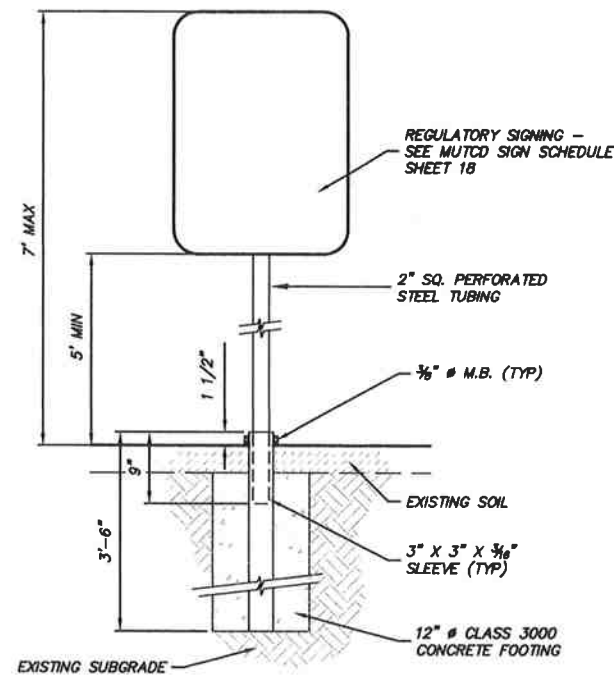


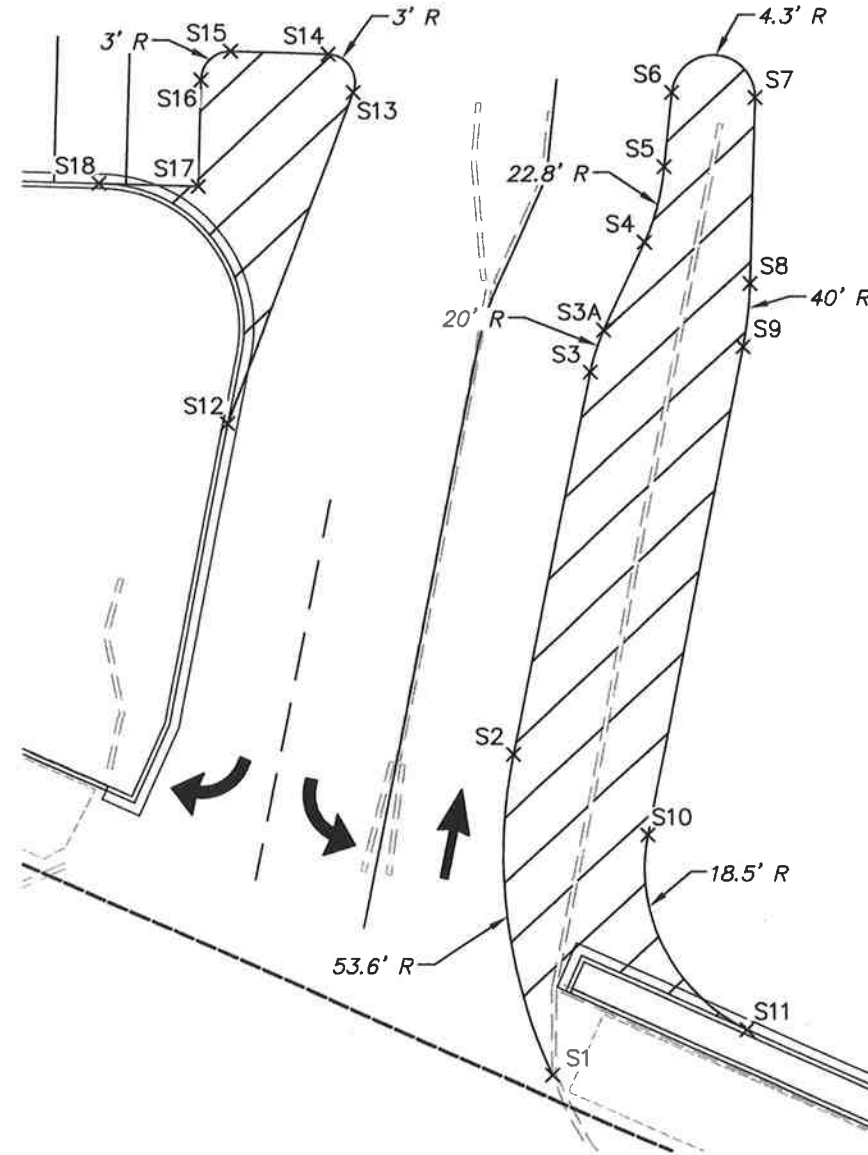
1 NOT USED
 19



2 REGULATORY SIGN INSTALLATION IN EXISTING ASPHALT
 19 NOT TO SCALE

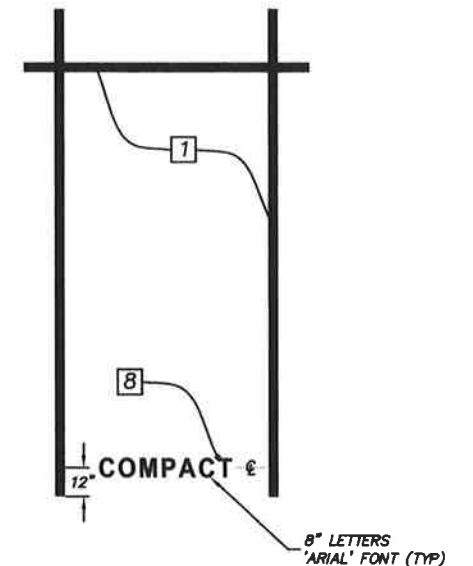


3 REGULATORY SIGN INSTALLATION IN SOIL
 19 NOT TO SCALE



4 ENLARGED STRIPING PLAN
 19 SCALE: 1"=10'-0"

PAVEMENT MARKINGS SCHEDULE		
SYMBOL NO.	NORTHING	EASTING
S1	N: 657963.75	E: 1157302.94
S2	N: 657997.22	E: 1157298.90
S3	N: 658036.90	E: 1157306.95
S3A	N: 658041.30	E: 1157308.35
S4	N: 658050.49	E: 1157312.57
S5	N: 658058.34	E: 1157314.59
S6	N: 658066.00	E: 1157315.39
S7	N: 658065.46	E: 1157324.05
S8	N: 658046.19	E: 1157323.49
S9	N: 658039.58	E: 1157322.76
S10	N: 657988.76	E: 1157312.82
S11	N: 657988.48	E: 1157323.08
S12	N: 658031.42	E: 1157269.20
S13	N: 658066.00	E: 1157282.28
S14	N: 658069.90	E: 1157279.66
S15	N: 658070.17	E: 1157269.54
S16	N: 658067.25	E: 1157266.46
S17	N: 658056.25	E: 1157266.17
S18	N: 658056.53	E: 1157255.89



5 COMPACT PARKING STALL LETTERING
 19 NOT TO SCALE

Date: Apr 20, 2010 10:39:07 AM
 Drawing: N:\DOCUMENTS\WATER PROGRAMS\PROJECTS\0212-006 SPRINKLER LID\ACAD\ERICA\0212-CNSHTSREV2.DWG
 Xrefs: (DIESEL evaluation failed)

DRAWING NO.	SURVEYED BY:	NO.	DATE	REVISION	BY	APPROVED
SEE SIDE STAMP	W. O'NEIL					
DRAWN BY:	DATE SURVEYED:					
E. GRIMM	10/21/08					
DESIGNED BY:	BOOK NO.					
E. GRIMM	----					
CHECKED BY:	DATE PLOTTED:					
AL ZEHHI, P.E.	SEE SIDE STAMP					

Robert W. Droll
 Landscape Architect, P.S.

 4405 7TH AVENUE SE, STE. 203
 LACEY, WA 98603

Pierce County
 DEPARTMENT OF PUBLIC WORKS AND UTILITIES
 SURFACE WATER MANAGEMENT
 TACOMA MALL PLAZA BUILDING
 2702 SOUTH 42nd STREET, SUITE 201
 TACOMA, WA 98409-7322
 APPROVED BY:
 HAROLD SMELT, P.E. SURFACE WATER MANAGEMENT MANAGER

BAS P. HUNGER
 STATE OF WASHINGTON
 REGISTERED PROFESSIONAL ENGINEER
 35750
 10/14/2011

SPRINKLER PARKING LOT LID PHASE 2
 700 SOUTH MILITARY ROAD
SIGNAGE AND STRIPING DETAILS
C.I.P. # D212-006
 SHEET 19 OF 19