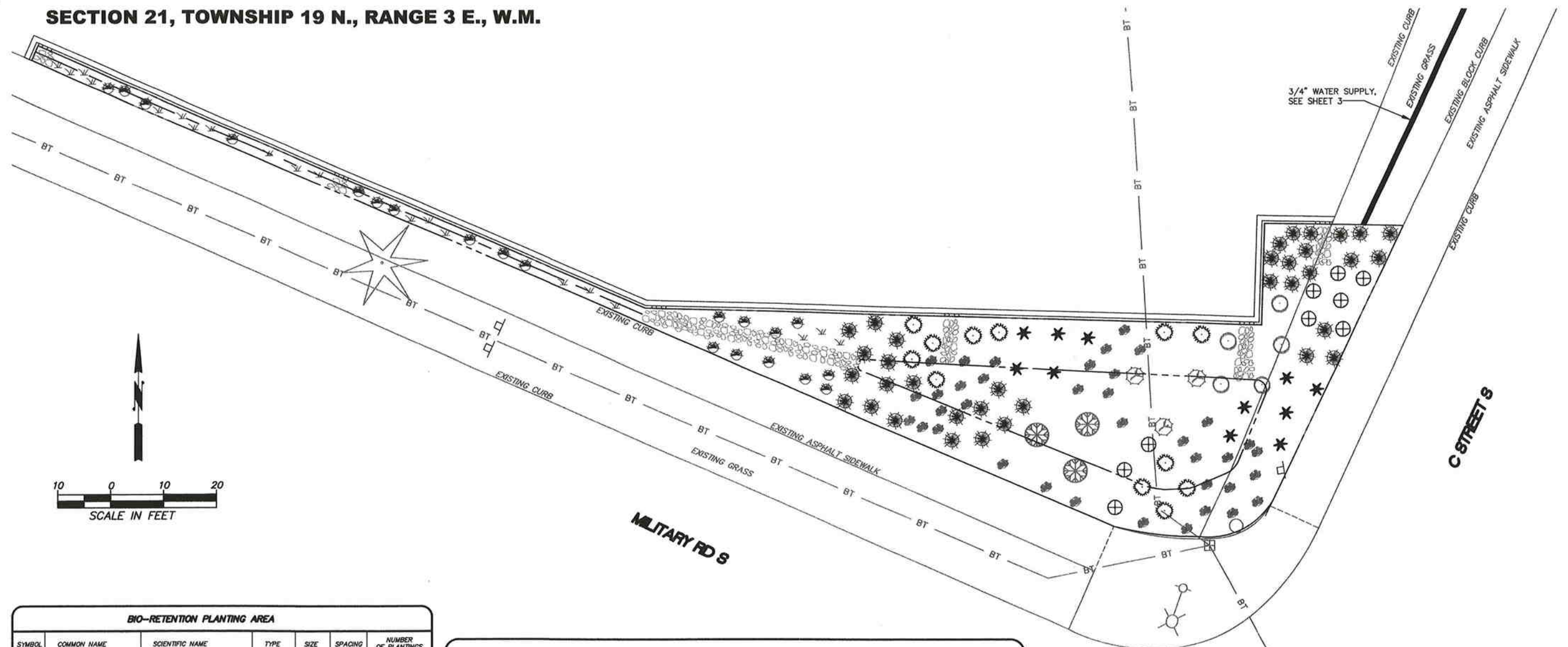


SECTION 21, TOWNSHIP 19 N., RANGE 3 E., W.M.

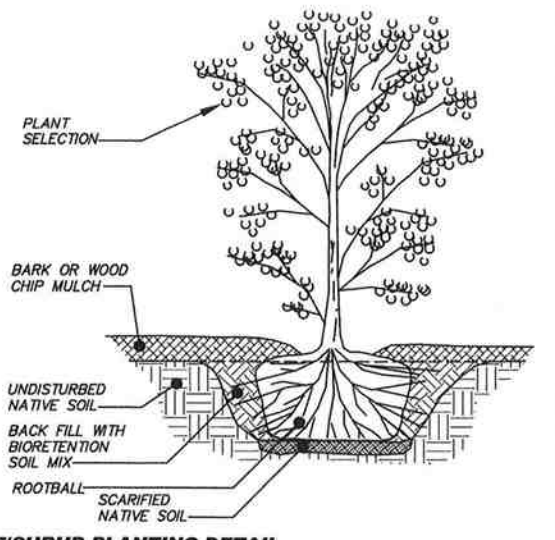


BIO-RETENTION PLANTING AREA

SYMBOL	COMMON NAME	SCIENTIFIC NAME	TYPE	SIZE	SPACING	NUMBER OF PLANTINGS
GRASSES						
	TUFTED HAIRGRASS	<i>Deschampsia cespitosa</i>	BARE ROOT SEEDLING	---	3' OC	20
	IDAHO FESCUE	<i>Festuca idahoensis</i>	BARE ROOT SEEDLING	---	3' OC	20
TREES/SHRUBS						
	VINE MAPLE	<i>Acer circinatum</i>	2 GAL	2' MIN	8' OC	3
	TALL OREGON GRAPE	<i>Mahonia aquifolium</i>	1 GAL	1' MIN	5' OC	37
	PACIFIC NINEBARK	<i>Physocarpus capitatus</i>	2 GAL	2' MIN	8' OC	9
	CHOCHECHERRY	<i>Prunus virginiana</i>	5 GAL	3' MIN	10' OC	3
	BEAKED HAZELNUT	<i>Corylus cornuta</i>	2 GAL	2' MIN	6' OC	12
	CASCARA	<i>Rhamnus purshiana</i>	2 GAL	3' MIN	8' OC	5
	RED FLOWERING CURRANT	<i>Ribes sanguineum</i>	2 GAL	2' MIN	6' OC	11
	SNOWBERRY	<i>Symphoricarpos albus</i>	1 GAL	1' MIN	5' OC	34

NOTES:

1. PLANTS SHALL BE INSTALLED AFTER MULCH HAS BEEN COMPLETED. RAKE MULCH AWAY FROM PLANTING PITS AND SAVE FOR RE-MULCH AFTER PLANT INSTALLATION.
2. HOLE DEPTH SHALL BE DETERMINED BY ROOTBALL HEIGHT. THE BOTTOM OF THE PLANTING HOLE SHALL BE SCARIFIED TO A DEPTH OF 4". TOP OF ROOTBALL SHALL BE 1 INCH ABOVE THE LEVEL OF NATIVE SOIL, ALLOWING POTTING SOIL TO BE VISIBLE BEFORE MULCH IS RAKED BACK.
3. REMOVE PLANT FROM POT AND LOOSEN ROOTBALL. SPREAD ROOTS AND CUT TO FIT BEFORE PLANTING.
4. PLANTS WILL BE SET AS IN NOTE 2. ONCE PLANTED, MULCH SHALL BE REPLACED OVER THE PLANTING PITS WITH AN 18 INCH DIAMETER AROUND PLANT, 3 INCHES DEEP. FEATHER MULCH TOWARD THE BASE OF THE PLANT BUT DO NOT ALLOW MULCH TO TOUCH BASE.
5. SOAK PLANTING PIT MIDWAY AND AFTER PLANTING.



TYPICAL CONTAINERIZED TREE/SHRUB PLANTING DETAIL

Date: May 15, 2008 11:08:11 AM
Drawing: P:\D195 SPRINKLER LID\DWG\0195CN01.DWG
Xrefs: [P:\D195 SPRINKLER LID\DWG\SPRINKLER BASE.DWG]

DRAWING NO. ACAD FILE	SURVEYED BY: ---
DRAWN BY: C. PIERUCCIONI	DATE SURVEYED: ---
DESIGNED BY: C. PIERUCCIONI	BOOK NO. ----
CHECKED BY: AL ZEINI	DATE: 05/15/2008

NO.	DATE	REVISION	BY	APPROVED



Pierce County
DEPARTMENT OF PUBLIC WORKS AND UTILITIES
WATER PROGRAMS
9850 64th STREET WEST
UNIVERSITY PLACE, WA 98467-1078
APPROVED BY:
HAROLD SMITH, P.E. WATER PROGRAMS MANAGER



**PHASE 1
SPRINKLER PARKING LOT LID RETROFIT**
700 S. MILITARY ROAD
PLANTING PLAN
C.I.P. # D195-006