



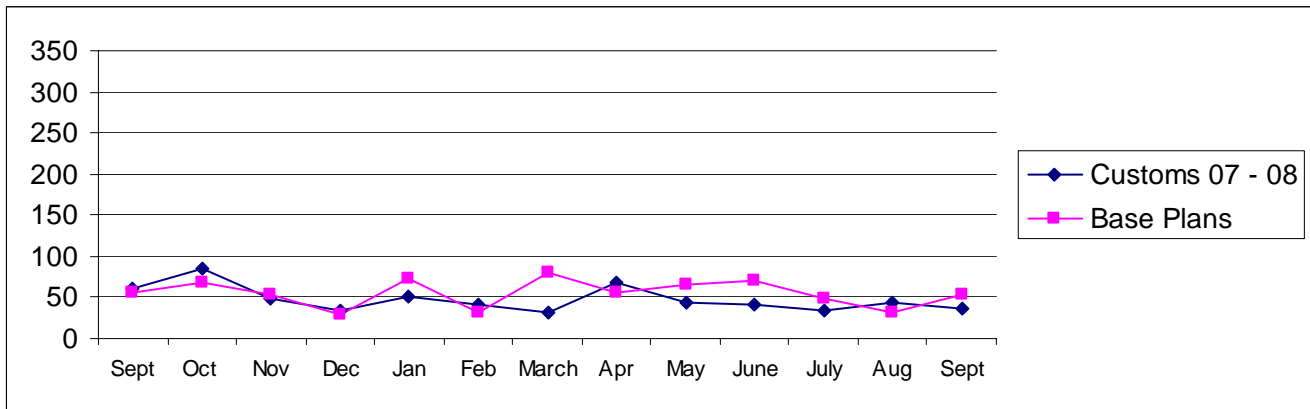
Pierce County

# Building Division's Mini-Scorecard September 2008

Gordon L Aleshire, Building Official  
253-798-2753 [galeshi@co.pierce.wa.us](mailto:galeshi@co.pierce.wa.us)  
Sherry Hulin, Supervising Administrative Assistant  
253-798-3152 [shulin@co.pierce.wa.us](mailto:shulin@co.pierce.wa.us)

Steve Widener, Building Inspector Supervisor  
253-798-7396 [swidene@co.pierce.wa.us](mailto:swidene@co.pierce.wa.us)  
Mike Noot, Plans Examiner Supervisor  
253-798-7218 [mnoot@co.pierce.wa.us](mailto:mnoot@co.pierce.wa.us)

## Issued Permits: Comparison of Custom Homes & Base Plans and Townhouse Units

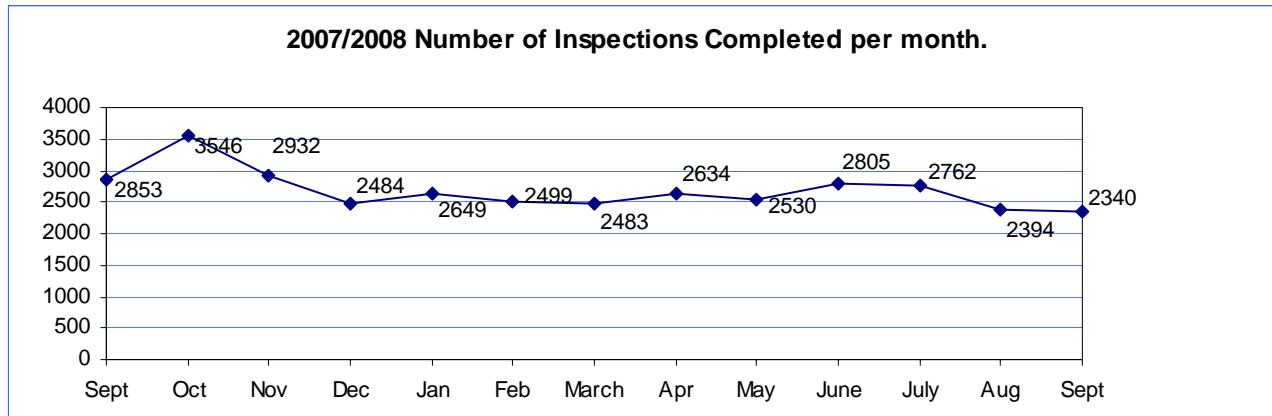


Single Family	Sept 2008	Sept 2007	YTD 2008 Jan/Sept	YTD 2007 Jan/Sept
No. of Custom	36	58	378	490
Valuation	\$ 5,796,664	\$ 14,548,695	\$ 65,458,457	\$ 101,543,002
No. of Base Plans	53	57	510	1200
Valuation	\$ 7,415,766	\$ 11,392,586	\$ 76,663,642	\$ 205,058,706

## Permits Issued Year To Date

New Single Family Additions	888	New Commercial Building	149
Remodels	264	Apartments (# of units)	104
Garages	193	Adult Family Homes	15
Manufactured Homes	315	Townhouses (# of units)	46
Duplex (# of units)	202	Lots Created YTD (from CJ)	1418
	18		

# Year to Date Inspection Activity



## Building Division Plan review turn around time for “issued” permits\*

	Target	Actual
Residential Plan Review	14 days to 1 <sup>st</sup> review None over 24 days	100% on time <b>Oldest 9 days</b>
Commercial Plan Review	28 days to 1 <sup>st</sup> review None Over 60 days	100% on time <b>Oldest 20 days</b>

\*This on-time report is combining new custom homes, Base Plans, minor remodel in a cumulative report for 1<sup>st</sup> review times.

