



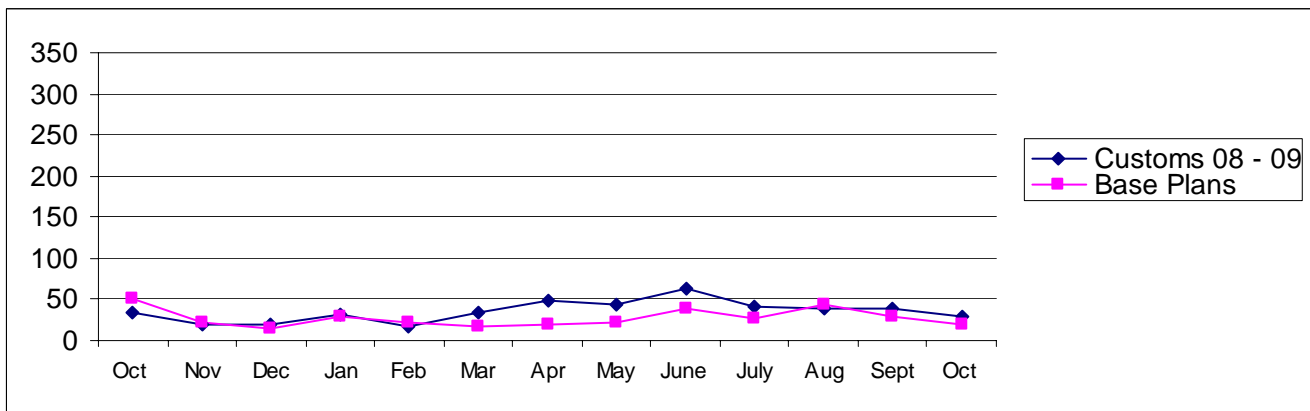
Pierce County

Building Division's Mini-Scorecard October 2009

Gordon L Aleshire, Building Official
253-798-2753 galeshi@co.pierce.wa.us
Sherry Hulin, Supervising Administrative Assistant
253-798-3152 shulin@co.pierce.wa.us

Steve Widener, Building Inspector Supervisor
253-798-7396 swidene@co.pierce.wa.us
Mike Noot, Plans Examiner Supervisor
253-798-7218 mnoot@co.pierce.wa.us

Issued Permits: Comparison of Custom Homes & Base Plans and Townhouse Units

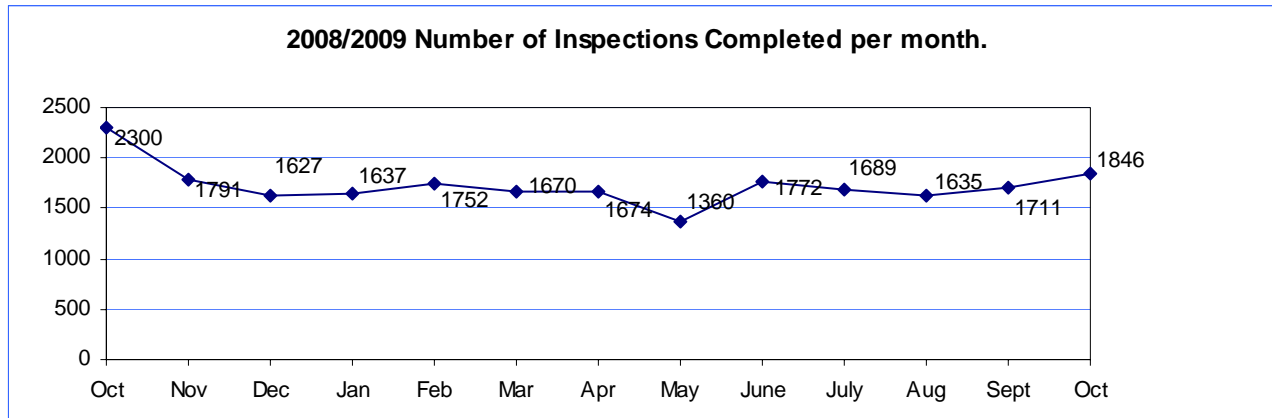


Single Family	Oct 2009	Oct 2008	YTD 2009 Jan/Dec	YTD 2008 Jan/Dec
No. of Custom	30	28	381	378
Valuation	\$ 6,323,090	\$ 4,722,062	\$ 65,935,583	\$ 65,819,230
No. of Base Plans	20	51	272	561
Valuation	\$ 3,007,676	\$ 6,613,341	\$ 46,560,037	\$ 83,283,905

Permits Issued Year To Date

New Single Family Additions	653	New Commercial Building	157
Remodels	286	Apartments (# of units)	93
Garages	168	Adult Family Homes	17
Manufactured Homes	258	Townhouses (# of units)	0
Duplex (# of units)	134	Lots Created YTD (from CJ)	734*
	58		*Sept not available

Year to Date Inspection Activity



Building Division Plan review turn around time for “issued” permits*

	Target	Actual
Residential Plan Review	14 days to 1 st review None over 24 days	100% on time Oldest 9 days
Commercial Plan Review	28 days to 1 st review None Over 60 days	100% on time Oldest 4 days

*This on-time report is combining new custom homes, Base Plans, minor remodel in a cumulative report for 1st review times.

