

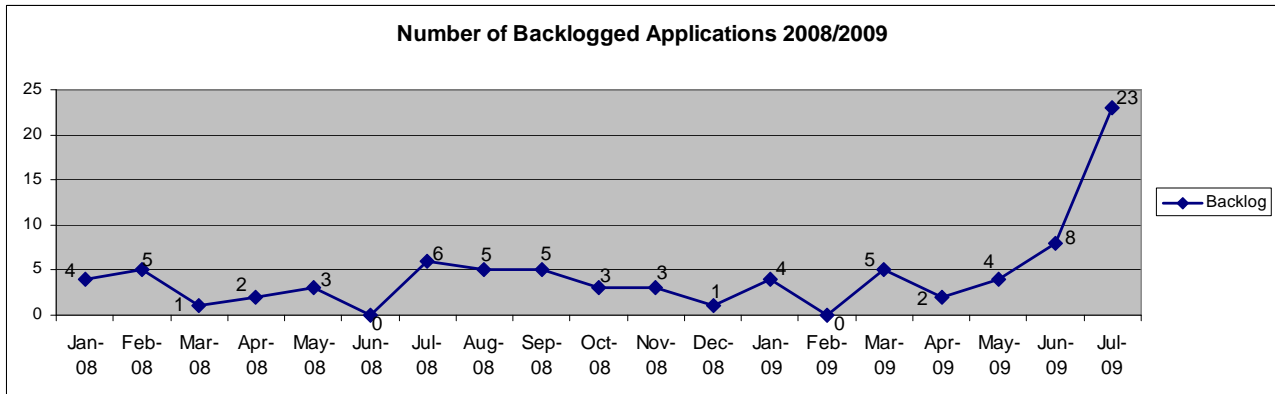


# Project Fast Forward

SCORECARD REPORT FOR RESOURCE MANAGEMENT

JULY 31, 2009

## Backlog Monitoring Report for Resource Management



### Details

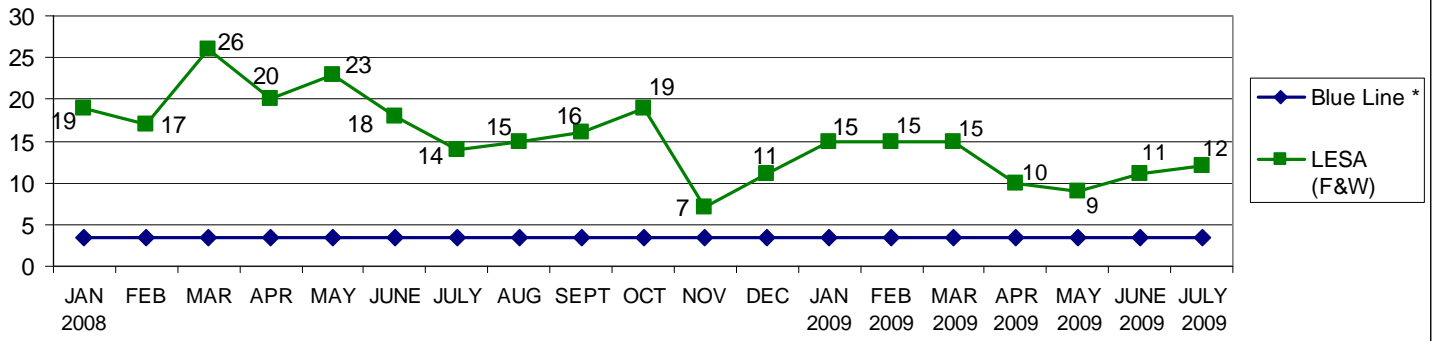
**Supervisory Comments:** Resource Management reviews were on time or less than one week late **72.72%** of the time. In fact, in most of those cases, the reviews were only three or four days late. We had 23 applications that became backlog in July. We had 26 days of leave taken in July. Many of these days were taken as vacation days, but some were personal sick days and some were taken to care for ailing parents. We also had some difficult staff reports to prepare, very time-consuming Public Disclosure Requests to respond to, and applicants that required extra attention. These are the kinds of things that contribute to backlog and to perceived “inefficiencies”.

**Efficiency Calculation:**

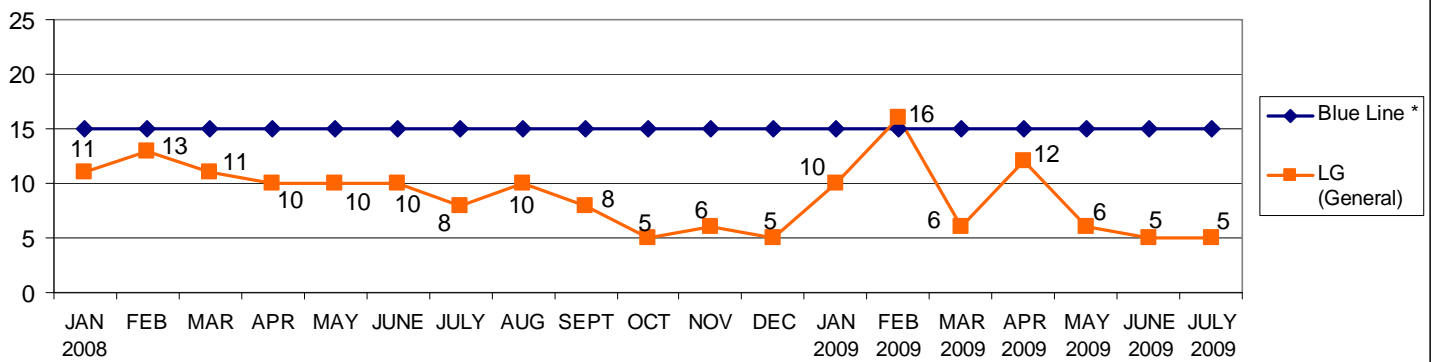
- 88 Applications due in July
- 58 Applications on time
- 30 Applications late (23 of which are Backlog)
- 65.90% Efficiency**

CATEGORIES		BACKLOG REPORT AS OF:											
		1/31/09	2/28/09	3/31/09	4/30/09	5/31/09	6/30/09	7/31/09	8/31/09	9/30/09	10/31/09	11/30/09	12/31/09
Backlogged Applications (number of applications with late reviews)	Appl. Review	4	0	0	0	4	8	23					
	Monitoring Rpts.	0	0	0	0	0	0	0					
	Forest Practice	0	0	0	0	0	0	0					
	<b>Total Backlog</b>	<b>4</b>	<b>0</b>	<b>5</b>	<b>2</b>	<b>4</b>	<b>8</b>	<b>23</b>					
<b>Activity For Prior Month</b>													
Number of Monitoring Reviews by Third Party		0	0	0	0	0	0	0	0	0	0	0	0
Dollars Expended for Third Party*		0	0	0	0	0	0	0	0	0	0	0	0
Number of Reviews by Other Means (assistance from other departments or sections)		0	0	0	0	0	0	0	0	0	0	0	0
Dollars Expended for Other Means*		0	0	0	0	0	0	0	0	0	0	0	0
Number of Backlog Reviews by Staff # of Reviewers 5 Biologists (performed during regular work day)		1	4	0	5	2	4	3	0	0	0	0	0
Number of Non-Contract Overtime Reviews by Staff		0	0	0	0	0	0	0	0	0	0	0	0
Number of Reviews by Extra Hire # of Reviewers N/A (performed during regular work day)		0	0	0	0	0	0	0	0	0	0	0	0
Dollars Expended for Extra Hire*		0	0	0	0	0	0	0	0	0	0	0	0
Notes: * Using Council Allocation													
<b>Expedited Reviews</b>													
Number Done Overtime Contract		<b>0</b>	<b>1</b>	<b>0</b>	<b>0</b>	<b>0</b>	<b>1</b>	<b>2</b>	<b>0</b>	<b>0</b>	<b>0</b>	<b>0</b>	<b>0</b>

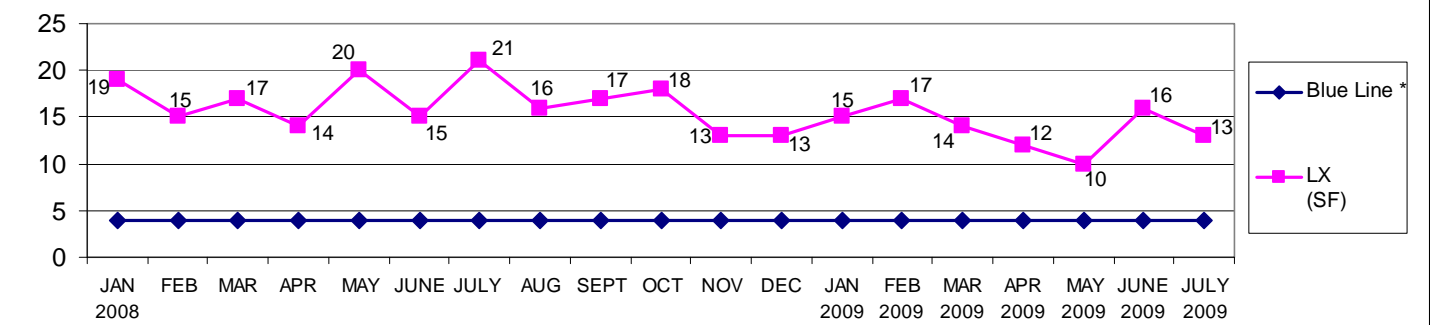
### Fish and Wildlife Applications



### General Applications

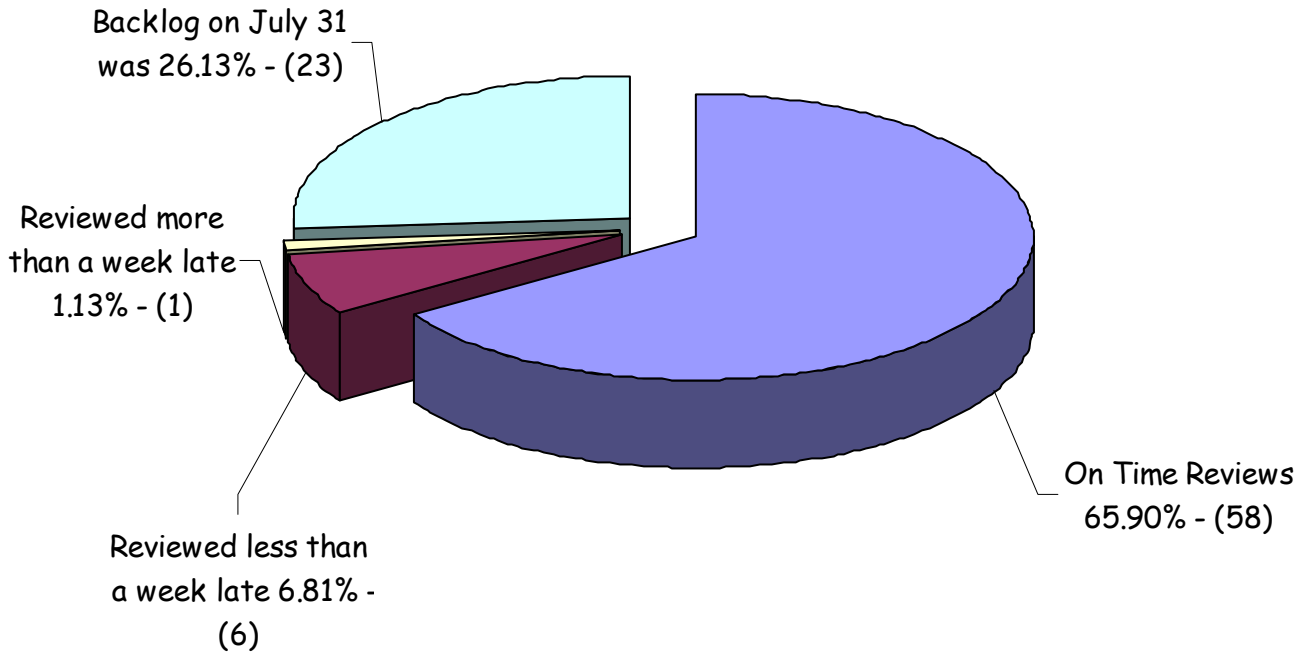


### Single-Family Applications



\* Blue Line = Number of applications that staff can process within review timelines (i.e. not go into backlog).

## Resource Mgt Performance Review July 2009



Resource Management - July 2009			
	Due	On Time	Late
60 Days	64	41	23
30 Days	7	6	1
14 Days	17	11	6
Total	88	58	30

### Efficiency Calculations - Resource Mgt. / January 2008 - July 2009

