

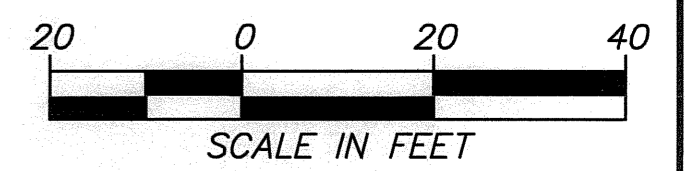
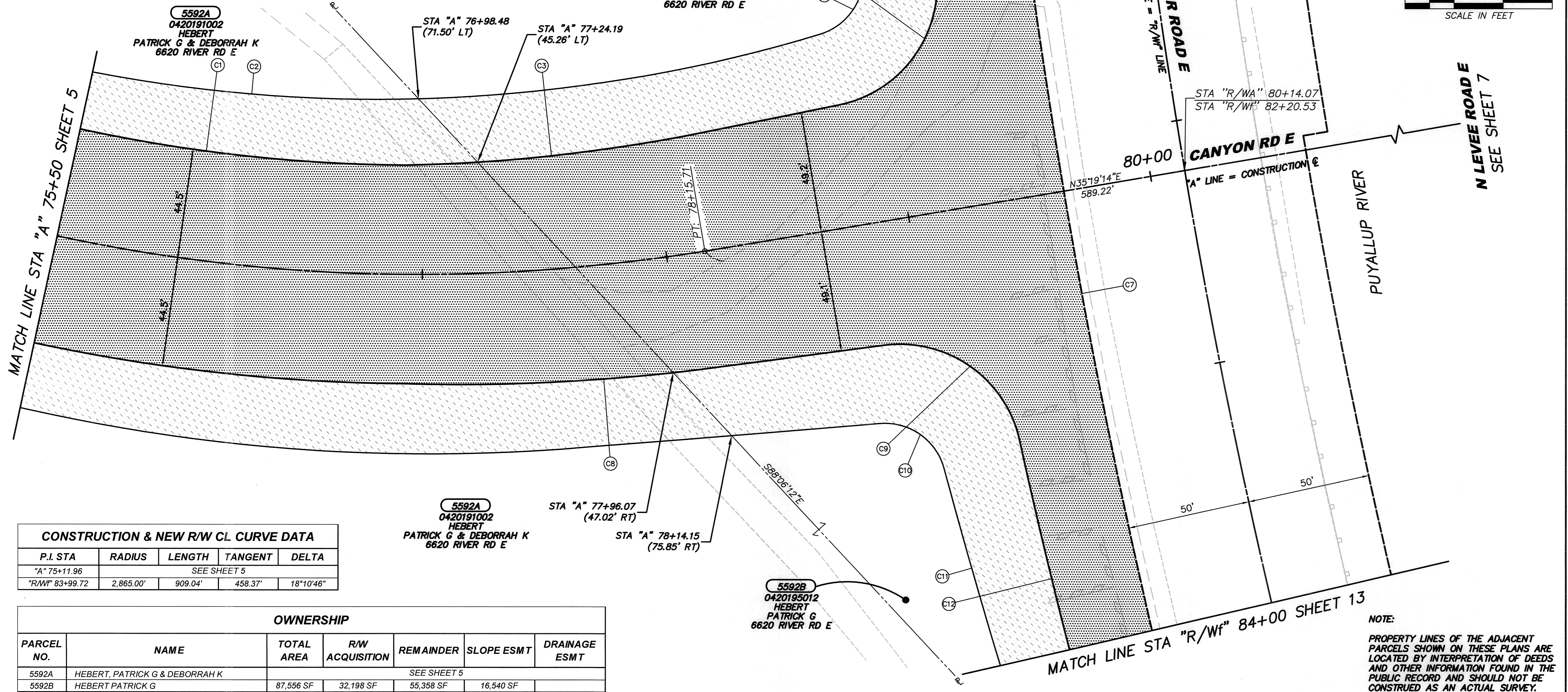
T. 20 N, R. 4 E., W.M.

REGION NO.	STATE	FEDERAL AID PROJECT NO.	SHEET NO.	TOTAL SHEETS
10	WASH.	STPUL 3170(003)	6	20

NE 1/4 NE 1/4
SEC. 19

CALL 2 WORKING DAYS BEFORE YOU DIG
1-800-424-5555
UTILITIES UNDERGROUND LOCATION CENTER

CURVE NO.	P.C. STA (OFFSET)	RADIUS	LENGTH	TANGENT	DELTA	P.T. STA (OFFSET)
C1	SEE C5 SHEET 5					
C2	SEE C6 SHEET 5					
C3	"A" 76+92.96 (44.50' LT)	653.80'	114.33'	57.31'	10°01'08"	"A" 78+15.28 (47.50' LT)
C4	"A" 78+76.76 (79.39' LT)	25.00'	34.34'	20.50'	78°42'07"	"A" 78+98.46 (102.49' LT)
C5	"A" 78+79.65 (49.71' LT)	50.00'	75.16'	46.73'	86°07'57"	"R/Wf" 81+22.08 (117.40' RT)
C6	"R/Wf" 80+29.12 (87.50' RT)	2,400.50'	99.25'	49.63'	02°22'08"	"R/Wf" 81+25.42 (87.83' RT)
C7	"R/Wf" 80+76.25 (50.00' RT)	2,916.59'	641.22'	321.91'	12°35'46"	"R/Wf" 87+06.47 (50.00' RT)
C8	"A" 76+93.07 (44.50' RT)	745.16'	130.35'	65.34'	10°01'21"	"A" 78+15.35 (47.50' RT)
C9	"A" 78+81.19 (49.73' RT)	50.00'	74.41'	46.03'	85°16'00"	"R/Wf" 83+14.99 (86.22' RT)
C10	"A" 78+74.41 (80.91' RT)	25.00'	34.80'	20.89'	79°45'15"	"R/Wf" 83+19.94 (118.66' RT)
C11	"R/Wf" 83+19.94 (118.66' RT)	2,419.45'	104.30'	52.16'	02°28'12"	"R/Wf" 84+20.00 (112.03' RT)
C12	"R/Wf" 83+14.99 (86.22' RT)	2,394.56'	485.39'	243.53'	11°36'51"	"R/Wf" 87+87.00 (69.21' RT)



P.I. STA	RADIUS	LENGTH	TANGENT	DELTA
"A" 75+11.96	SEE SHEET 5			
"R/Wf" 83+99.72	2,865.00'	909.04'	458.37'	18°10'46"

PARCEL NO.	NAME	TOTAL AREA	R/W ACQUISITION	REMAINDER	SLOPE ESMT	DRAINAGE ESMT
5592A	HEBERT, PATRICK G & DEBORRAH K	SEE SHEET 5				
5592B	HEBERT PATRICK G	87,556 SF	32,198 SF	55,358 SF	16,540 SF	

NOTE:
PROPERTY LINES OF THE ADJACENT PARCELS SHOWN ON THESE PLANS ARE LOCATED BY INTERPRETATION OF DEEDS AND OTHER INFORMATION FOUND IN THE PUBLIC RECORD AND SHOULD NOT BE CONSTRUED AS AN ACTUAL SURVEY.

DRAWN BY: C. LAKOSE	BOOK NO.: 1424
DESIGNED BY: L. SANFORD	SURVEYED BY: D. AUCLAND
CHECKED BY: R. SCHLONGA, P.E.	DATE SURVEYED: 6-30-2000
REVIEWED BY: P. BAUGHMAN, P.E.	DATE PLOTTED: Oct. 2012

NO.	DATE	REVISION	BY	APPROVED

Pierce County
Public Works and Utilities
Office of the County Engineer
Tacoma Mall Office Building
4301 South Pine Street, Suite 446
Tacoma, Washington 98409-7207
An APIWA Accredited Agency

10/17/12
County Engineer
APPROVED BY:
Brian D. Stacy
BRIAN D. STACY, P.E. DATE
RAMIRO A. CHAVEZ, P.E., PGMP
PROJECT ENGINEERING MANAGER

CANYON RD E NORTHERLY EXTENSION
62ND AVE E TO 45TH ST CT E
RIGHT OF WAY PLAN SHEET
CRP 5498

Drawing: P:\5498-5257E\0AVE\ENGRS\DRAWINGS\RIGHTOFWAY\PLANSHEETS\5498PROW\PLANS01.DWG Layout Tab: ROW 06
 Xrefs: 5498DES\INDEX.DWG / 5498-5643-TOP\INDEX.DWG / 5498 ROW INDEX.DWG / 5498RTH\INDEX.DWG
 Date: 10/10/2012 Time: 12:50:55 PM Plotted by: CLAKOSE