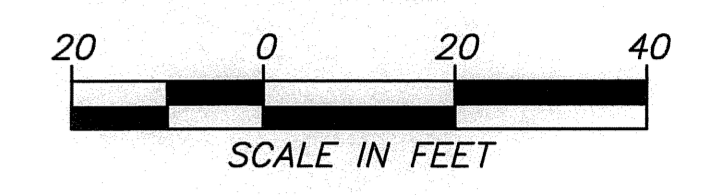


REGION NO.	STATE	FEDERAL AID PROJECT NO.	SHEET NO.	TOTAL SHEETS
10	WASH.	STPUL 3170(003)	20	20

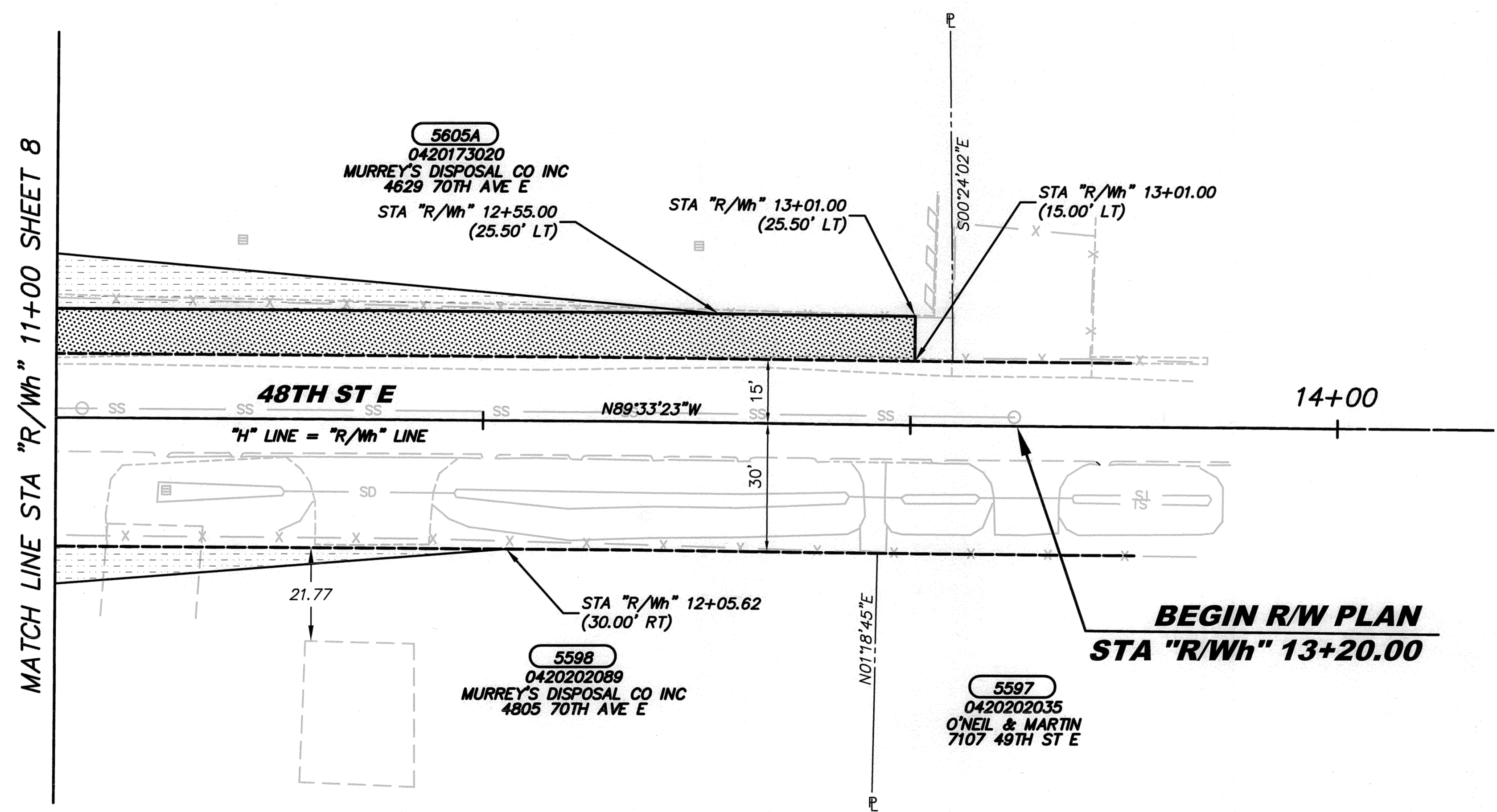
CALL 2 WORKING DAYS BEFORE YOU DIG  
**1-800-424-5555**  
 UTILITIES UNDERGROUND LOCATION CENTER



OWNERSHIP						
PARCEL NO.	NAME	TOTAL AREA	R/W ACQUISITION	REMAINDER	SLOPE ESMT	DRAINAGE ESMT
5597	O'NEIL & MARTIN					SEE SHEET 7
5598	MURREY'S DISPOSAL CO INC					SEE SHEET 8
5605A	MURREY'S DISPOSAL CO INC					SEE SHEET 8

**T. 20 N, R. 4 E., W.M.**

SW 1/4 SW 1/4  
 SEC. 17



NW 1/4 NW 1/4  
 SEC. 20

NOTE:  
 PROPERTY LINES OF THE ADJACENT PARCELS SHOWN ON THESE PLANS ARE LOCATED BY INTERPRETATION OF DEEDS AND OTHER INFORMATION FOUND IN THE PUBLIC RECORD AND SHOULD NOT BE CONSTRUED AS AN ACTUAL SURVEY.

Drawing: P:\5498-525TE70AVE\ENGRS\DRAWINGS\RIGHT OF WAY\PLANS\PLANS02.DWG Layout Tab: ROW 20  
 Xref: 5498DESIGNINDEX.DWG / 5498 ROW INDEX.DWG / 54980E70INDEX.DWG / 5498-525TE70AVESURVEINDEX.DWG / 5498-5643-TOPOINDEX.DWG  
 Date: 10/15/2012 Time: 11:51:43 AM Plotted by: CLAKOSE

<b>DRAWN BY:</b> C. LAKOSE	<b>BOOK NO.:</b> 1424
<b>DESIGNED BY:</b> L. SANFORD	<b>SURVEYED BY:</b> D. AUCLAND
<b>CHECKED BY:</b> R. SCHLONGA, P.E.	<b>DATE SURVEYED:</b> 6-30-2000
<b>REVIEWED BY:</b> P. BAUGHMAN, P.E.	<b>DATE PLOTTED:</b> Oct. 2012

NO.	DATE	REVISION	BY	APPROVED

**Pierce County**  
 Public Works and Utilities  
 Office of the County Engineer  
 Tacoma Mall Office Building  
 4301 South Pine Street, Suite 446  
 Tacoma, Washington 98409-7207  
 An APWA Accredited Agency

County Engineer

APPROVED BY:

*Brian D. Stacy* 10-17-12  
 BRIAN D. STACY, P.E. DATE

RAMIRO A. CHAVEZ, P.E., PGMP  
 PROJECT ENGINEERING MANAGER

**CANYON RD E NORTHERLY EXTENSION**  
**62ND AVE E TO 45TH ST CT E**  
**RIGHT OF WAY PLAN SHEET**

**CRP 5498**