



Pierce County FAST Teams
Monthly Team Meeting

Pierce County Emergency Operations Center
April 8, 2014



Agenda

1. Introductions/Announcements

2. Administration for Children & Families, Region 10,
Lewissa Swanson

3. Future meeting dates/times
 - a. Second Tuesday every month.

4. Adjourn

Next meeting:

Communication Challenges – ESL

May 13, 2014 1:30-3:30 pm

Pierce County DEM

2501 South 35th Street, Suite D

Tacoma, WA 98409

Putting the Human Services in Health and Human Services

**Regional Emergency Management Specialist
Department of Health and Human Services
Administration for Children and Families
Office of Human Services Emergency Preparedness and Response
(OHSEPR)**

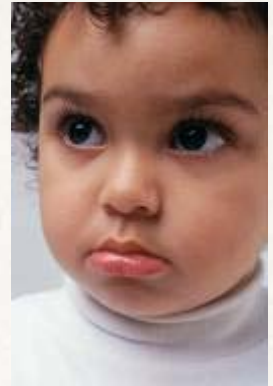


ACF

The Administration for Children and Families (ACF), within the Department of Health and Human Services (HHS) is responsible for federal programs that promote the economic and social well-being of families, children, individuals, and communities.

These programs include:

- Adoption & Foster Care
- Child Abuse & Neglect
- Child Care
- Child Support
- Developmental Disabilities
- Early Childhood Education
- Energy Assistance (LIHEAP)
- Family/Domestic Violence
- Responsible Fatherhood Initiative
- Head Start
- Runaway and homeless youth
- Native American/Tribal issues
- Refugees (including repatriation)
- Temporary Assistance for Needy Families (TANF)
- Community Services Block Grant (Community Action Agencies)



Who is HHS?

Many HHS Agencies Are Involved in Responding to a Disaster

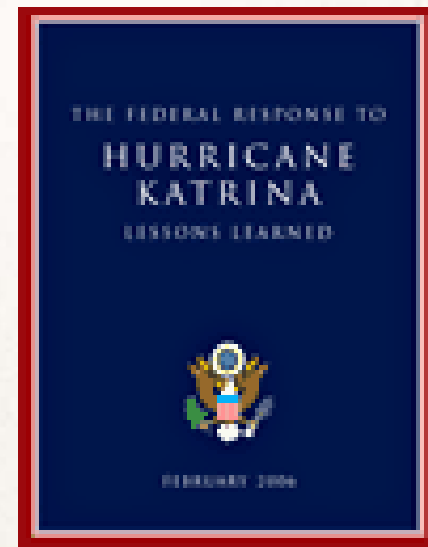
- Administration on Aging
- Centers for Medicare & Medicaid Services
- Centers for Disease Control & Prevention
- Food & Drug Administration
- Health Resources & Services Administration
- Indian Health Service
- Office for Public Health & Science
- Substance Abuse & Mental Health Services Administration
- Assistant Secretary for Preparedness & Response (ASPR)



ACF's Role in Disaster Preparedness and Response

Katrina Lessons Learned:

- HHS should coordinate with other departments of the Executive Branch, as well as State governments and non-governmental organizations, to develop a robust, comprehensive, and integrated system to deliver human services during disasters....



ACF's Role in Emergency Response

Overall Mission: ACF supports Human Services, especially for children and vulnerable families

- Preparedness Training and Technical Assistance
- ACF also coordinates with ASPR & HHS
- Office of Human Services Emergency Preparedness and Response created (OHSEPR)
- Response coordination efforts with FEMA and the State
- Children's HHS workgroup
- Children and Youth in Disasters Task Force
- Immediate Disaster Case Management
- Reunification of Minors Strike Team
- Recovery



Preparedness T&TA

- Increased requirements of ACF Programs
 - Head Start
 - Child Welfare
 - Bubbles
- Support training and technical assistance
 - Conferences & meetings
 - Plans (DEL)



Coordinate with ASPR & HHS

- HHS organized response through the Regional Advisory Council
 - AK
 - SR530 Slides
- Support ASPR and ESF8
 - Response (IRCT and Hurricane Ike)
 - Recovery (NDRF and H&SS RSF)



OHSEPR

- Central Office Programs
 - LIHEAP
 - Alaska Native and Tribal Head Start
- National Partnerships
 - Reunification Document
- Children's workgroup
 - HHS work post NCCD in response to children and disasters
- ACF Coordination of Assets



Response Coordination

- JFO
 - Situational Awareness
 - Human Services
 - Children and Vulnerable Family Expertise
 - Children and Youth in Disaster Task Force
- Support the State
 - Technical assistance, waivers, flexibilities, and plan amendments





NATIONAL COMMISSION ON
CHILDREN AND DISASTERS



“Within hours of Hurricane Ike’s landfall in Texas, San Antonio officials had compiled precise statistics about their evacuee situation. They knew the city would need to care for 5,303 people (561 of whom had special medical needs) and 642 pets. ... But there was one key group for which they had no figures: children.”

**-- Newsweek, “Overlooked: The Littlest Evacuees”
(October 6, 2008)**



ADMINISTRATION FOR
CHILDREN & FAMILIES

About the Commission

- Authorized by Congress December 26, 2007, final report submitted October 2010
- Administration for Children & Families provided support
- Mandated study different policy areas related to the needs of children affected by disasters, including:
 - Trauma, physical and mental health
 - Child welfare
 - Child care
 - Housing (sheltering, intermediate, long-term)
 - Evacuation and Transportation
 - Elementary and Secondary Education
 - Juvenile Justice
 - Emergency Management



Why Children?

- Children exposed to Hurricane Katrina were nearly 5 times as likely as a pre-Katrina cohort to exhibit serious emotional disturbance.
- 40.8% of parents in Louisiana and 49.1% in Mississippi reported that their child experienced emotional or behavioral problems that they did not experience before Hurricane Katrina.
- Fewer than half of the children believed to need psychological help from Katrina received it.
- More than a third of parents living within a mile of the Gulf Coast say their children suffered physical or mental distress since the oil rig blew up April 20, 2010.

“Children as Bellwethers of Recovery: Dysfunctional Systems and the Effects of Parents, Households, and Neighborhoods on Serious Emotional Disturbance in Children After Hurricane Katrina” (David M. Abramson, PhD; Yoon Soo Park, MS; Tasha Stehling-Ariza, MPH; Irwin Redlener, MD), *Disaster Medicine and Public Health Preparedness*, August 23, 2010

http://www.childrenshealthfund.org/sites/default/files/files/Children_As_Bellweathers.pdf



Why Children?

- Children have unique needs – they are not “little adults.”
- Children comprise 25% of the population, but they are placed inappropriately into categories of “special needs,” “vulnerable,” or “at risk.”
- In communities affected by disasters there is a **risk** for increased child abuse, domestic violence, and family violence.



CHILD Workgroup

- Began after NCCD
- Co-chaired by ACF and ASPR ABC
- The purpose is to continue to provide increased activities to support emergency preparedness for children and vulnerable families



Children & Youth in Disasters Task Force

- Child Care and Disasters task force started in Joplin
- Hurricane Isaac
 - In 2 parishes
- Superstorm Sandy
 - New York
 - New Jersey

[https://www.acf.hhs.gov/sites/default/files/ohsepr/childrens task for ce_development_web.pdf](https://www.acf.hhs.gov/sites/default/files/ohsepr/childrens_task_for ce_development_web.pdf)



Immediate Disaster Case Management (IDCM)

- Time limited program through Stafford Act funds, ACF subcontracts with CCUSA
- Up to 90 days, with ability to expand to 135
- Case management specific to disaster caused needs
- Disaster case managers have received DCM training and come from all over US
- ACF coordinates with FEMA, ASPR, State to implement program
- Not always implemented



Reunification

- *Post Disaster Reunification of Children: A Nationwide Approach*
 - https://www.acf.hhs.gov/sites/default/files/ohsepr/post_disaster_reunification_of_children.pdf
- In partnership with FEMA, NCMEC, Red Cross
- Unaccompanied Minors Registry
- Reunification Strike Team participation – new asset



Recovery

- Under the NDRF we provide support to the Health & Social Services RSF
- This is often a time when we look again at possibly using waivers, flexibilities, and plan amendments.
- Training & Technical Assistance
- Recovery is long-term



FAST Considerations

- Safe Spaces
- CUSI list – appropriate items for children
- Volunteers Screened
- Security and Sex Predators
- In general, the shorter time in a shelter, the better for children
- Partner with appropriate NGOs
- Unaccompanied Minor Registration



Superstorm Sandy vs. the CSZ

- Large scale, long term impact
 - 3 days, 3 ways doesn't cut it
- Tsunami like water impact due to storm surge
- Coast sustained most damage, but whole State (and other States) overwhelmed by response
- Ongoing impacts (storms like aftershocks)
- Lack of communications/power/water
- Long term displacement, curfews
- Housing impact
- Completely changes social service infrastructure



Last Thoughts

- Each disaster is different
- Know your community
- The disaster is all people talk about
- Restaurants closed
- Streets closed (need an actual map)
- Electricity out
- Debris and sand everywhere



Lessons Learned

- Be kind
- Be ready to work over holidays
- Be prepared
- Be honest
- Remember EVERYONE around you has been affected by this event
- Plan to explain our cultural oddities and demographics



FEMA Resources

- FEMA changes
 - Child Care ONA expenses – new Recovery Policy
 - Public Assistance for Child Care Services
 - Disaster Assistance Fact Sheet 9580.107: Public Assistance for Child Care Services
www.fema.gov/pdf/government/grant/pa/9580_107.pdf
 - Child care now an essential service
 - Ready.gov has child specific resources
 - FEMA Independent Study Course –
<http://training.fema.gov/EMIWeb/IS/courseOverview.aspx?code=is-36>



ACF Resources

- Early Childhood Disaster-Related Resources
 - Early Childhood Education Providers
 - Children & Families
 - Policy Makers
- Reunification Document
- Children & Youth Task Force



Other Resources

- American Red Cross
 - www.redcross.org
- Save the Children
 - www.savethechildren.org
- Children Disaster Children Services
 - www.brethern.org/cds



Questions?

Lewissa Swanson

Regional Emergency Management Specialist

lewissa.swanson@acf.hhs.gov

206=615-2573

