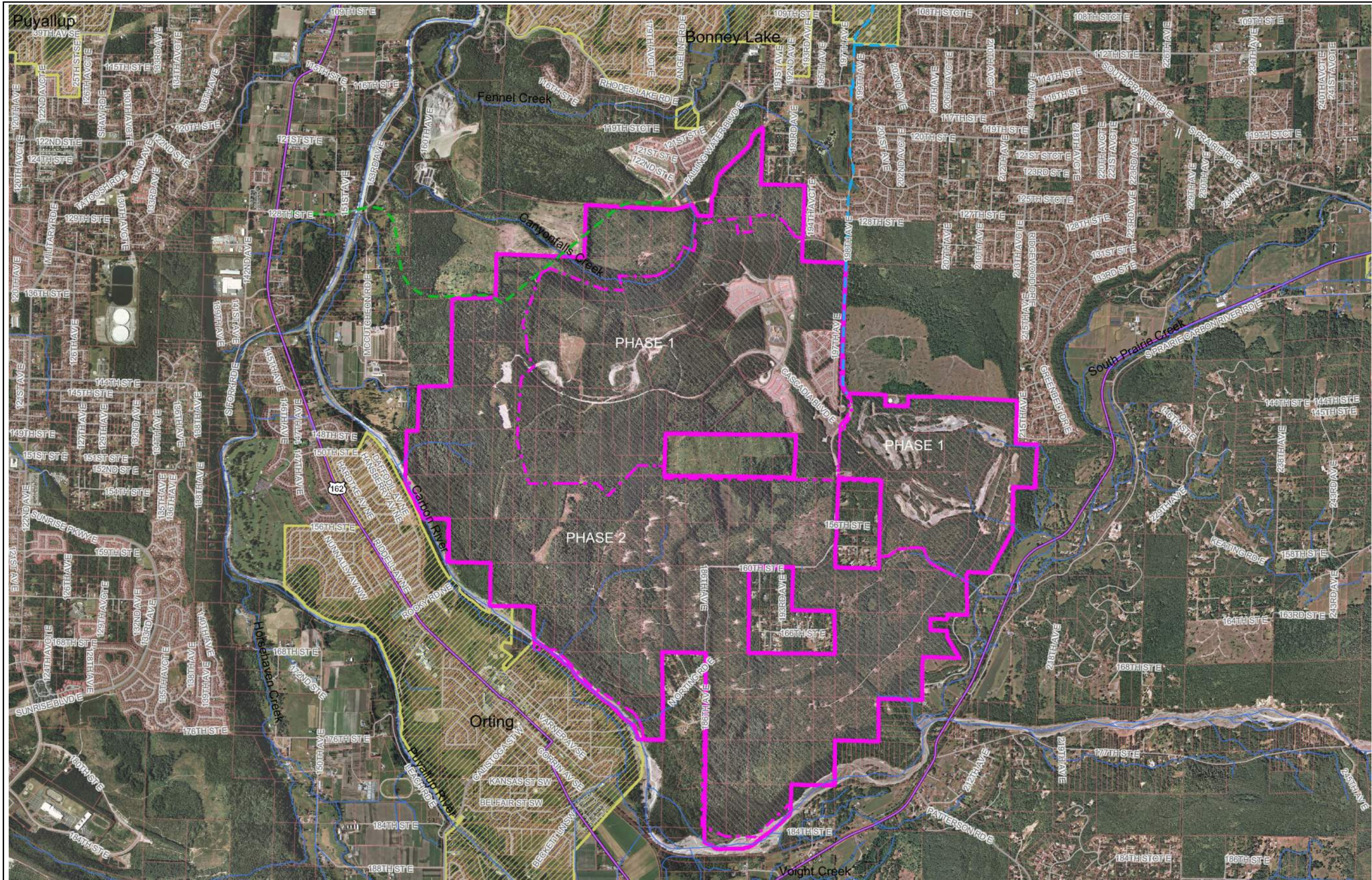


# Major Amendment to the Cascadia (aka Tehaleh) EBPC Planned Unit Development (PUD)

Phase 2

784759 / 784735



**Map Legend**

- 198th Avenue Improvements (CRP 5590-5674-5675-5676)
- New Rhodes Lake Road Corridor (CRP 5731)
- Hydro - Centerlines
- Cascadia (Tehaleh) Phase 1/Phase 2 Boundary
- Cascadia (Tehaleh) EBPC Boundary

**Roads**

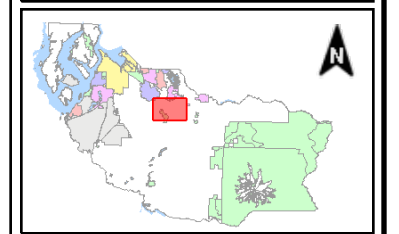
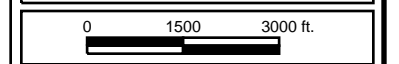
- Interstate
- Limited Access State Routes
- Other State Routes
- Ramps
- Major Arterial
- Collector
- Local Access

**Cities in Pierce County**

- Cities in Pierce County

**Tax Parcels**

- County - 2011 - Ortho



Printed: 8/27/14 11:34 AM

pals-rj

The map features are approximate and are intended only to provide an indication of said feature. Additional areas that have not been mapped may be present. This is not a survey. Orthophotos and other data may not align. Pierce County assumes no liability for variations ascertained by actual survey. All data is expressly provided AS IS and with ALL FAULTS. Pierce County makes no warranty of fitness for a particular purpose.