

Forest Park
29.7 ac

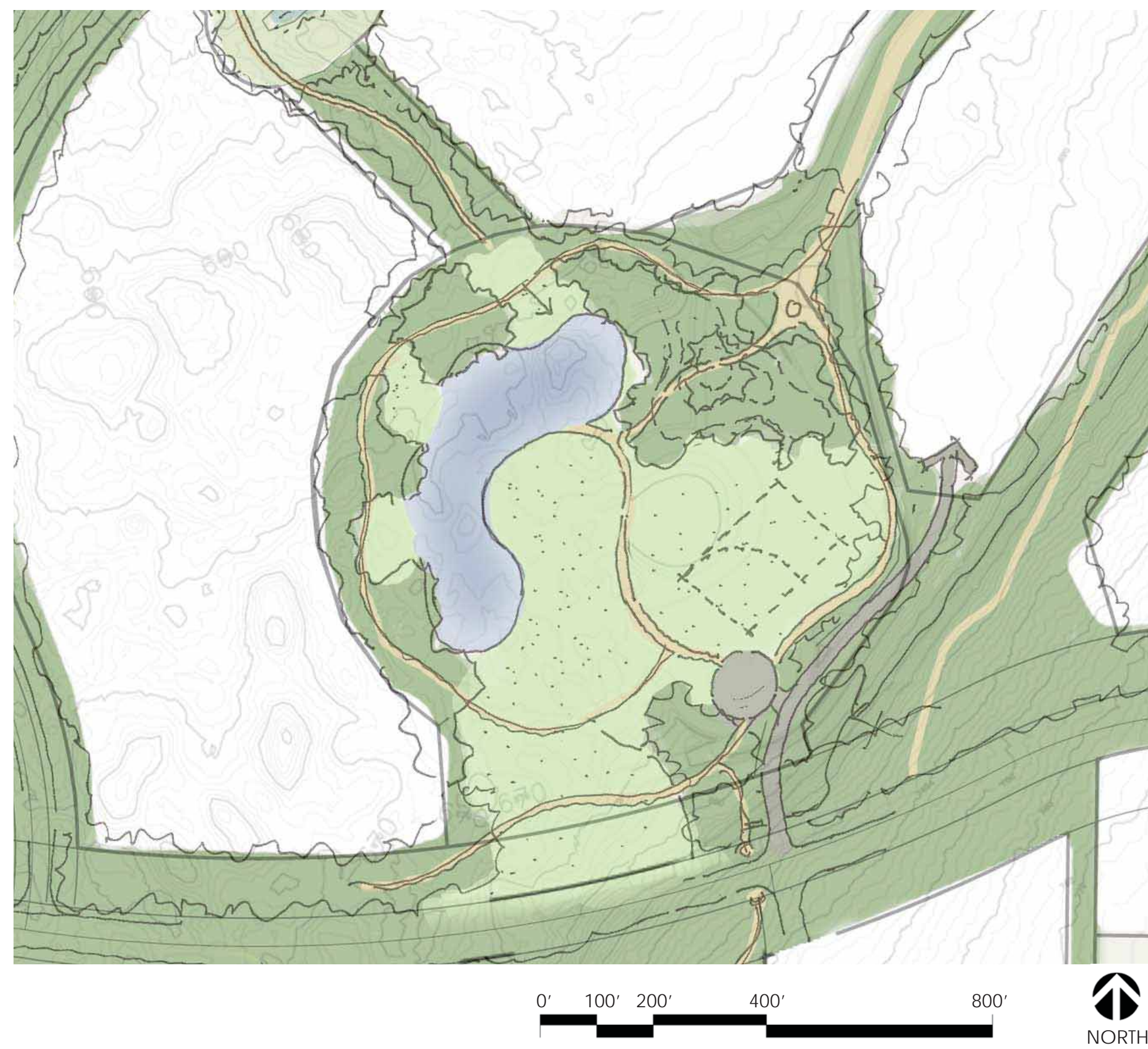
- Use:**
- Forested trails & stopping points
 - Campsites/overlooks
 - Benches & picnic areas
 - Stargazing/gathering
 - Dog park
 - Restrooms/Parking
 - Adult play area

- Users:**
- Families
 - Kids
 - Young Adults/Adults
 - Seniors
- Site Description:**
- Beautiful existing forest (dappled light, healthy trees, not too dense)
 - Utility corridor offers prime opportunity for wide multi-use trail
 - Secondary trail north of utility corridor offers possible far north views and provides circuit within forest park
 - Utility spur leaves a cleared corridor of open space adjacent to a proposed feeder road
 - Mostly flat topography with steeper slopes in the southwest and along the cleared utility corridor

- Comparison of 2012 Phase 1 Master Parks Plan & Proposed Master Parks Plan:
- The 3.4 acres of open lawn from Kite Park are now located within the 19.8 acres in Meadow Park.
 - The Wetland/Yonder Park amenities have been relocated to Meadow Park, as the Trilogy Clubhouse is now located to the West of Yonder Park in their place.

Note: This plan and schedule is conceptual in nature. Park locations, sizes, programming, and timing is approximate and subject to change at the request of Tehaleh in accordance with the terms of the Cascadia Development Agreement.

Note: The schedule shown is approximate and subject to change. It is generally intended that Tehaleh's parks will be constructed concurrent with the development of adjacent residential parcels. The dates shown above are approximate; the actual dates that parks are constructed will depend on the pace of development and/or as determined during design review of parcel specific development applications, preliminary plats, building permits.



Meadow Park
19.8 ac

- Use:**
- Large open play field
 - Picnic benches & seating
 - Differing lake edge treatments
 - Play areas
 - Reservoir
 - Trails
 - Parking/restrooms

- Users:**
- Families
 - Kids
 - Young Adults/Adults
 - Seniors
- Site Description:**
- Vast, open, flat, exposed environment - could be delineated into zones using trees and shaping of the land
 - Park offers potential views from surrounding residential development
 - Reservoir could be used as a potential site amenity
 - The amount and scope of Meadow Park improvements and programming is dependent on the feasibility of maintaining storm water infiltration functions and performance which will take precedence.

Note: Prior to construction of any park or trail facilities identified in Exhibits E-1 through E-4, Pierce County Planning and Land Services approval of construction plans is required to ensure consistency with the Tehaleh EBPC land use approvals.