

SECTION 2

REGION 5 ALL HAZARD MITIGATION PLAN 2015-2020 EDITION PIERCE COUNTY PROFILE SECTION

Table of Contents

TABLE OF CONTENTS	1
MISSION STATEMENT	2
SERVICES SUMMARY	2
GEO-POLITICAL SUMMARY	3
.....	4
DEMOGRAPHICS.....	5
SPECIAL POPULATIONS	5
DEMOGRAPHIC ANALYSIS	5
INFRASTRUCTURE SUMMARY	6
GENERAL	6
JURISDICTION INFRASTRUCTURE	6
ECONOMIC SUMMARY	8
RESOURCE DIRECTORY	9
REGIONAL	9
NATIONAL.....	9
ENDNOTES.....	10

Mission Statement

The Mission of Pierce County is as follows:

“Pierce County government, in partnership with the citizens, will enhance the livability of our community through responsive services which address our current and future needs.”

Services Summary

Pierce County is located in the Southern Puget Sound area of the State of Washington. Pierce County was founded on December 22, 1852, by the legislature of Oregon Territory. As of 2010 census, the population was 795,225. Pierce County is home to Mount Rainier (volcanic hazard), the tallest mountain in the Cascade Range. Because of its topography, geology and meteorology, Pierce County is susceptible to earthquake, lahar, flood, landslide, tsunami, severe weather, and wildfire hazards. In addition, Pierce County is also susceptible to man-made and technological hazards such as abandoned mines, civil disturbance, dam failure, energy emergencies, epidemic/pandemics, hazardous material spills, pipeline incidents, terrorism and transportation accidents. Also within its boundaries is Joint Base Lewis-McChord. Located on Commencement Bay is the Port of Tacoma, one of the largest and most active seaports on the West Coast of the USA.

Pierce County provides comprehensive services to all of its population. The County provides the following services through their own capabilities:

Table 2-1 County Services¹

COUNTY SERVICES			
Service	Yes	Service	Yes
County Executive	Yes	Municipal Airport	Yes
Prosecuting Attorney	Yes	District/Superior Courts	Yes
County Council	Yes	Public Works	Yes
County Sheriff	Yes	Comprehensive Planning	Yes
County Auditor	Yes	Issue Bonds / Levies of General Tax	Yes
Assessor/Treasurer	Yes	Fire Department/EMS	Yes
License and Tax Fees	Yes	Sanitary Landfill/Refuse Service	Yes
Risk Management	Yes	Storm Drains	Yes
Public Defender	Yes	Streets/Alleys	Yes
Radio Communications	Yes	Parks and Parkways	Yes
Streets	Yes	Water Pollution Abatement	Yes
Wastewater Collect & Treat	Yes	Local Improvement Districts	Yes
Water Utility	Yes	Family Justice Center	Yes
Parks and Recreation	Yes	County Elections	Yes
Public Transportation Systems	No	Emergency Management	Yes
Health Department	Yes	Fire Prevention	Yes

Surface Water Management	Yes	Transportation Planning	Yes
Hearing Examiner	Yes	Human Services	Yes
Medical Examiner	Yes	Planning and Land Services	Yes
Library	Yes	Waste Management	Yes
Cooperative Extension	Yes	Soil Conservation	Yes

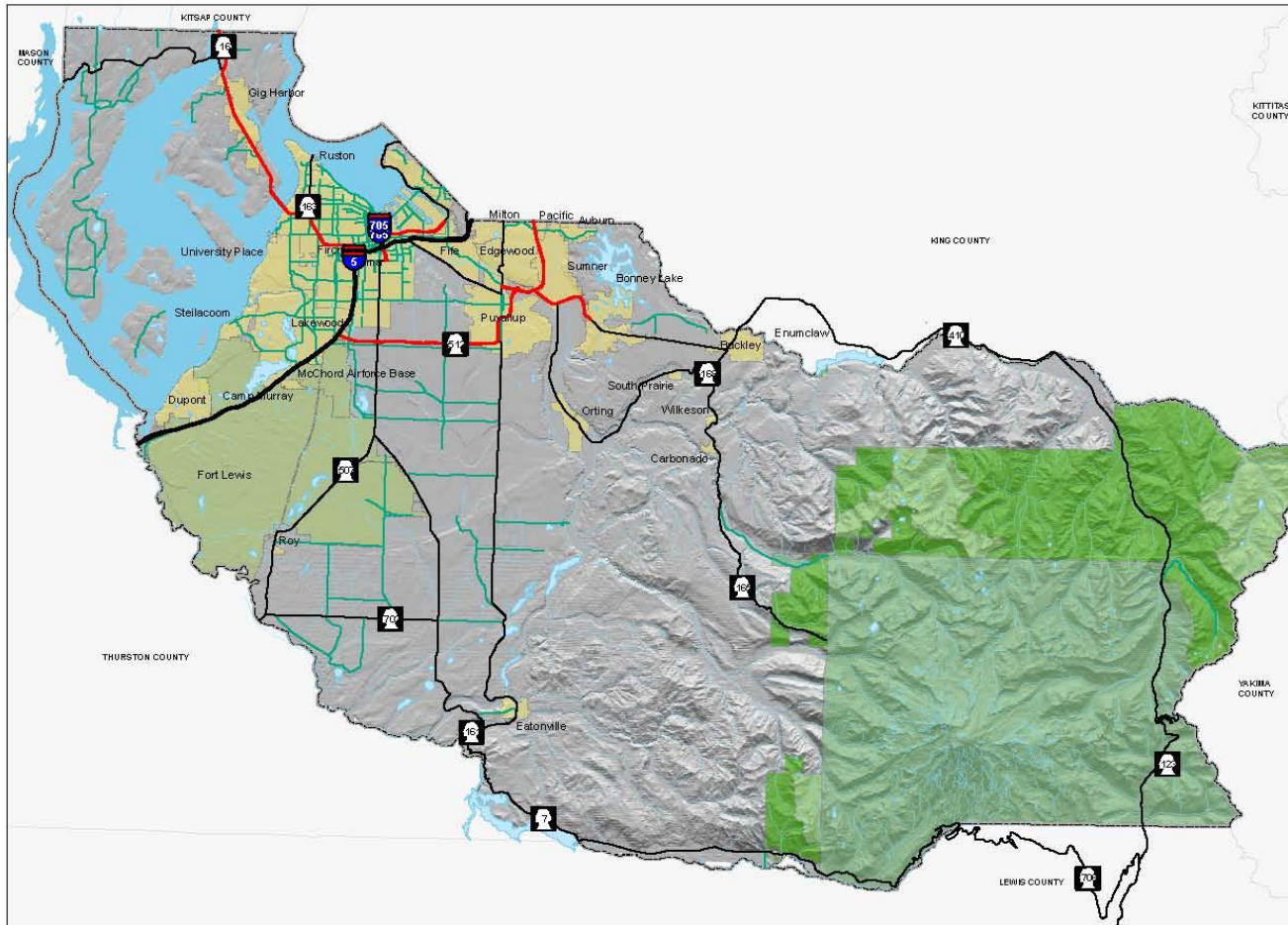
Geo-Political Summary

Table 2-1 Geo-Political Summary²

Jurisdiction	Area (sq mi)	Elevation Range (ft.)	Major Watersheds	Bordering Counties	Cities/Towns/Tribes
Pierce County	1,808	0-14,410	<ul style="list-style-type: none"> • White/ Puyallup Watershed • Chambers Clover Watershed • Nisqually Watershed • Kitsap/Key Peninsula-Gig Harbor-Islands Watershed 	<ul style="list-style-type: none"> • Thurston • Lewis • Mason • Kitsap • King • Yakima 	<ul style="list-style-type: none"> • Tacoma • Gig Harbor • Fircrest • Lakewood • Ruston • Milton • Edgewood • Enumclaw (land only) • Bonney Lake • Fife • City of Puyallup • Puyallup Tribe • Muckleshoot Tribe • Nisqually Tribe • Auburn • Pacific • Sumner • Orting • Carbonado • Buckley • Wilkeson • South Prairie • Eatonville • Roy • DuPont • Steilacoom • University Place

Map 2-1 Pierce County - Basemap

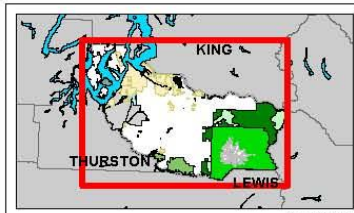
PIERCE COUNTY - BASEMAP



Legend

- CITIES
- MILITARY
- NATIONAL FOREST
- NATIONAL PARK
- WILDERNESS AREA
- WATER BODY
- RIVERS/STREAMS
- Limited Access
- Limited Access State Routes
- Other State Routes
- Arterials

The map features are approximate and are intended only to provide an indication of general location. Additional details that have not been mapped may be present. THE USER ASSUMES ALL LIABILITY FOR ANY AND ALL DAMAGES, INCLUDING REASONABLE ATTORNEY'S FEES, ARISING FROM THE USE OF THIS MAP. ALL DATA IS EXPRESSLY PROVIDED "AS IS" AND WITH ALL FAULTS. THE COUNTY MAKES NO WARRANTY OF FITNESS FOR A PARTICULAR PURPOSE.



August 18, 2015



Pierce County
Emergency Management

Demographics

Table 2-2 Population^{3,4,5,6}

Jurisdiction	Population	Population Density (people/sq mi)	Population Served	Projected Year 2022 Population Change (%)	Projected Population Density	Projected 2022 Population Served
Unincorporated	367,275	397	367,275	-53.66%	122	205,480
Incorporated	427,950	43	427,950	1.04%	268	443,415
Region 5	795,225	440	795,225	-18.39%	359	648,895

Special Populations

Table 2-3 Special Populations⁷

Jurisdiction	Population	Population 65 Plus	% of Total	Population U-20	% of Total
Unincorporated	367,275	36,576	41.7%	107,512	48.7%
Incorporated	427,950	51,194	58.3%	112,839	51.2%
Region 5	795,225	87,770	11%	220,351	27.7%

Demographic Analysis

Data from the 2010 Census puts Pierce County’s population at 795,225. This includes 427,950 within the cities and towns of the County and 367,275 in the unincorporated portions of the County. This is an addition of 94,452 across the County or a 13.48% increase. Of this the incorporated population increased by 39,707. The 65 plus population while only 11% of the population, had the largest percentage increase gaining 22.57% over the 10 year period.

Infrastructure Summary

General

Table 2-5 Parcel Summary⁸

Jurisdiction	# Parcels	Land Value	Average Land Value	Improved Value	Average Improved Value
Unincorporated	150,502	\$12,809,440,880	\$82,359	\$19,347,644,990	\$124,400
Incorporated	163,633	\$16,933,210,912	\$10,830	\$3,030,305,170	\$31,177
Region 5	319,165	\$29,742,651,792	\$93,189	\$49,650,950,160	\$155,577

Jurisdiction	Total Assessed Value	Average Assessed Value
Unincorporated	\$32,157,085,870	\$206,755

Table 2-6 Housing Summary⁹

Jurisdiction	# Houses	Housing Density	Avg. Year Built	Avg. Year Built (%)
Region 5	292,010	162	<ul style="list-style-type: none"> • <1939: 34,857 • 1940-1979: 133,531 • 1980-2000: 108,672 	<ul style="list-style-type: none"> • <1939: 12.6% • 1940-1979: 48.2% • 1980-2000: 39.2%

Jurisdiction Infrastructure

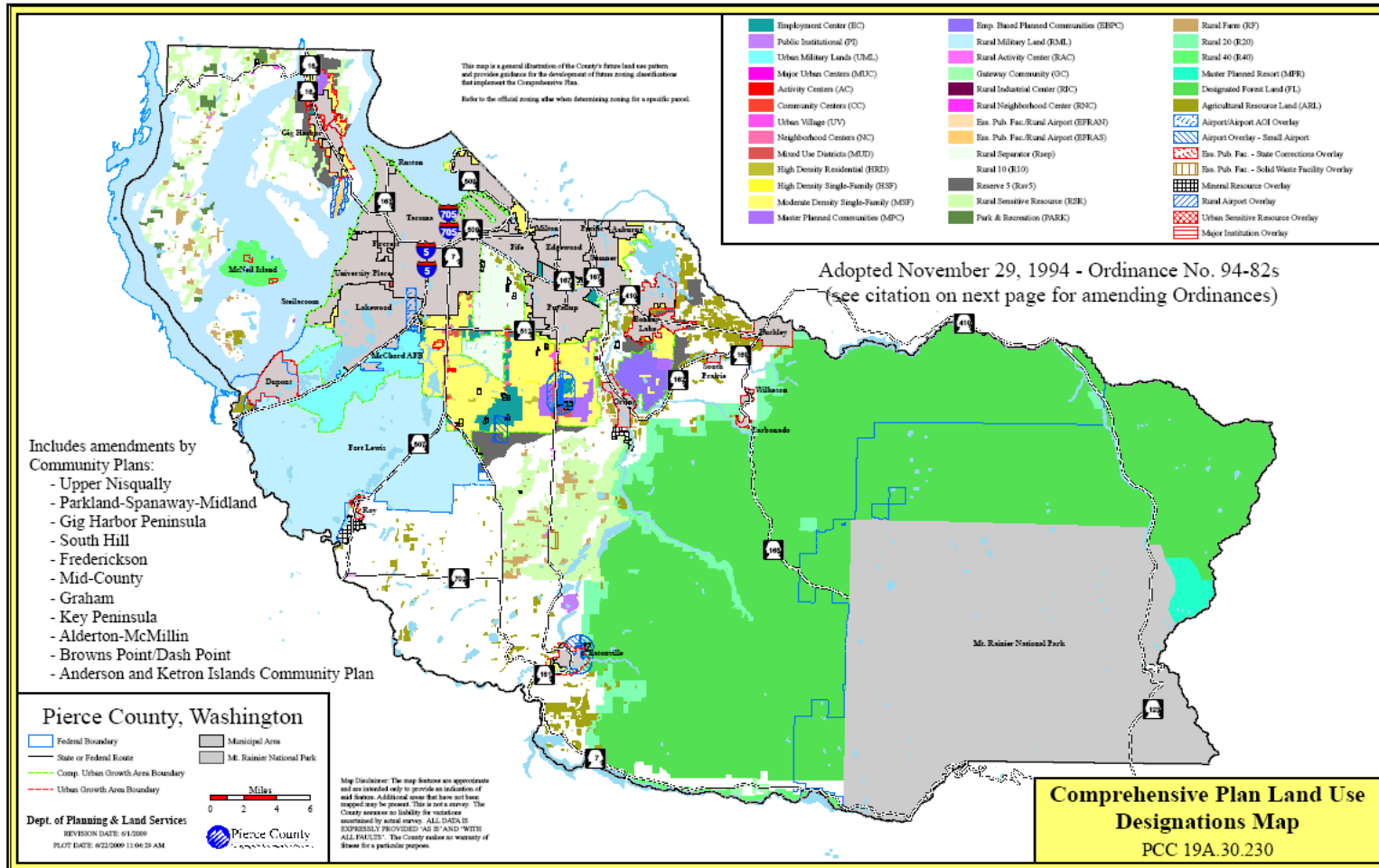
The following table shows the overview of infrastructure owned by Pierce County. The infrastructure is categorized according to the infrastructure sectors as designated by the Department of Homeland Security. This table is intended as a summary only.

For further details on Department of Homeland Security infrastructure sectors, please see the Process Section 1.

Table 2-7 Owned Infrastructure¹⁰

Total Infrastructure	Emerg. Services	Tele-comm	Transportation	Water	Public Health	Government	Commercial	Total Value (\$)
48	11	3	9	9	3	11	2	\$2,700,055,129

Map 2-2 Pierce County – Land Use Map



Economic Summary

Table 2-8 Fiscal Summary¹¹

Jurisdiction	Operating Costs (per month)	Operating Budgeted Revenues ¹²	Operating Budgeted Expenditures ¹³	Fund Balance as % of Operating Cost	Avg. Fund Balance (5 yrs)
Pierce County	\$60,522,109	\$726,265,312	\$726,265,312	5%	\$92,953,213

Table 2-9 Employment Profile¹⁴

Employment Category (SIC)	Pierce County
Agriculture, Forestry, Fishing, Mining and Hunting	3,126
Construction	24,340
FIRES (Finance, Insurance, Real Estate, and Services)	18,212
Wholesale Trade	13,919
Transportation and Warehousing and Utilities	21,555
Manufacturing	39,511
Retail	39,408
Education, Health and Social Services	65,256
Professional, Scientific, Management, Administrative, Waste Management	23,095
Public Administration	18,363

Table 2-10 Unemployment Rate¹⁵

Jurisdiction	Unemployment Rate
Pierce County*	8.9%
WA State*	9.2%

*adjusted seasonally

Resource Directory

Regional

- **Pierce County Government**
<http://www.piercecountywa.org/PC/>
- **Pierce County DEM**
<http://www.piercecountywa.org/>
- **Pierce County PALS**
<http://www.co.pierce.wa.us/pc/abtus/ourorg/pals/palshome.htm>
- **Municipal Research & Services Center of Washington (MRSC)**
<http://www.mrsc.org>

National

- **US Census**
www.census.gov/

Endnotes

- ¹ Information from survey completed by the County 2013.
- ² Information from Pierce County GIS application, CountyView Pro (2013/14).
- ³ “Population” from Office of Financial Management for 2013.
- ⁴ “Projected Population Change (%)” from Pierce County Buildable Lands Report, Dec. 2007. The projected 2022 Population % change number reflects -53.66% for the above skewed numbers.
- ⁵ “Projected Population Density” is based on an assumption of the jurisdiction maintaining the same geographic area and boundaries. It does not consider changes in annexation, district mergers, etc.
- ⁶ “Projected 2022 Population” from Pierce County Buildable Lands Report, Dec. 2007.
- ⁷ Information from Pierce County GIS application, CountyView Pro projected for 2013/14.
- ⁸ Information from Pierce County GIS application, CountyView Pro projected for 2013/14.
- ⁹ Information from Census 2010, Office of Financial Management.
- ¹⁰ Information obtained from Jurisdiction from Infrastructure Matrix.
- ¹¹ Information provided by Budget and Finance Department of Pierce County.
- ¹² Non-Capital
- ¹³ Non-Capital
- ¹⁴ Information from Census 2010, Office of Financial Management.
- ¹⁵ Washington State Employment Security, Workforce Statistics