



# 2018-2019 Area Plan Update



Pierce County Human Services

**Aging and Disability Resources**

Presented September 19, 2017

# Aging & Disability Resources

## ❖ **Mission**

To ensure that residents have available community-based services that allow older adults and adults with disabilities to remain at home as long as possible, while promoting dignity and maximizing individual choice

## ❖ **Vision**

To create and sustain livable communities throughout Pierce County by better serving older adults and adults with disabilities and by enhancing the capacity of communities to support people of all ages

# Purpose of the Area Plan

## What is the Plan about?

- ▶ Identifies local needs and long term service gaps
- ▶ Includes community input on preferred services
- ▶ Prioritizes funding for community based long term services and supports
- ▶ Establishes goals and objectives for improving the local long term services network; and
- ▶ Outlines areas for focused advocacy
- ▶ Reports on accomplishments of past two years

# Community Input



# Prioritizing Discretionary Funds

The background features abstract, overlapping geometric shapes in various shades of green, ranging from light lime to dark forest green. These shapes are primarily located on the right side of the slide, creating a modern, layered effect. The rest of the slide is a plain white background.

# Prioritizing Discretionary Funds

- **Does it reach the priority/target populations?**
  - Low income
  - Physical or mental disabilities
  - Limited English / language barriers
  - Homebound / isolated
  - Culturally or socially isolated

# Prioritizing Discretionary Funds

## ➤ Does it meet a basic need?

- Food
- Shelter
- Physical / emotional health
- Safety
- Assistance with normal daily tasks

# Prioritizing Discretionary Funds

## ➤ Does it also . . .

- support a person's ability to remain at home as long as possible?
- fill a service gap in the community?
- help accomplish Area Plan Goals and Objectives?
- promote healthy lifestyle choices?
- help avoid use of higher cost services?



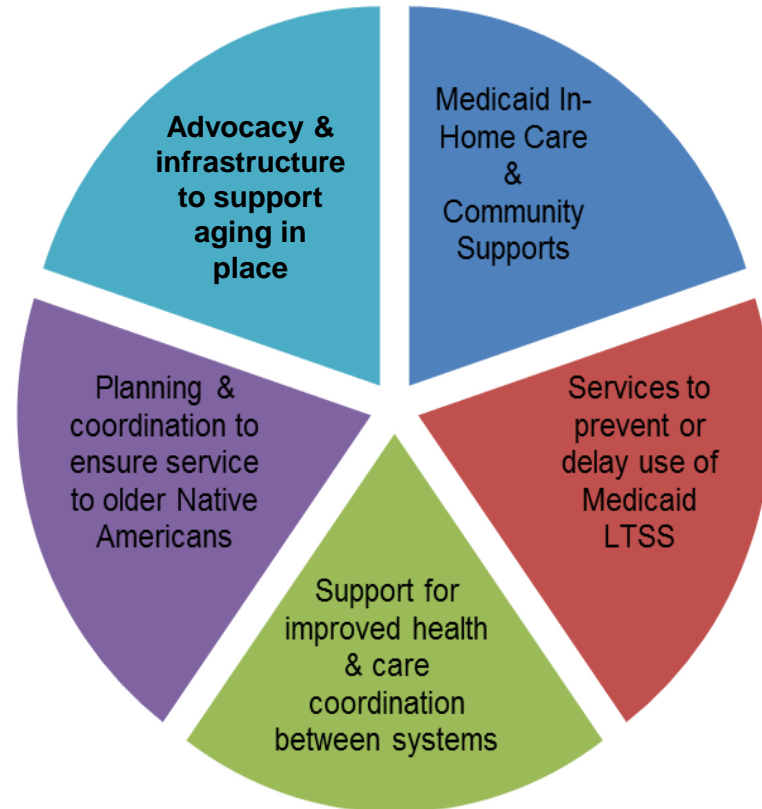
# Local Service Priorities

Level One	Level Two	Level Three
<ol style="list-style-type: none"><li>1. Aging &amp; Disability Resource Center (ADRC), including Community Living Program</li><li>2. Case Management</li><li>3. Family Caregiver Support</li><li>4. Home Delivered Meals</li><li>5. Senior Mealsites</li><li>6. Transportation</li><li>7. Falls Prevention</li><li>8. Adult Day Health</li></ol>	<ol style="list-style-type: none"><li>1. Footcare Services</li><li>2. Counseling Services</li><li>3. Evidence-based dementia intervention</li></ol>	<ol style="list-style-type: none"><li>1. Legal Aid Services</li><li>2. Kinship Caregiver Support</li><li>3. LTC Ombudsman</li></ol>

# Overview of Issue Areas / Goals



# 2016-2019 ISSUE AREAS



2018-2019 Update adds Medicaid Transformation Project activities to all issue areas

- LTSS
- Delay Medicaid LTSS
- Service Integration
- Native Americans
- Livable Communities

# Activities & Accomplishments

Issue Area	Primary Focus	2016-17 Highlights
LTSS	<ul style="list-style-type: none"> <li>• Community First Choice (CFC) program implementation</li> <li>• Person-centered care planning / goal setting</li> <li>• Management of new Medicaid community-based services contracts</li> <li>• Implementation of performance-based outcome measures</li> <li>• Medicaid Transformation Project Demonstration (MTPD) roll-out</li> </ul>	<ul style="list-style-type: none"> <li>• Added language-specific Case Management capacity to serve growing caseloads (Spanish, Vietnamese, Korean &amp; Samoan)</li> <li>• Added Contracts staff capacity to develop &amp; monitor service contracts</li> <li>• Case Management staff completed initial MTPD training</li> </ul>
Delay of Medicaid LTSS	<ul style="list-style-type: none"> <li>• ADRC / Community Living Connections &amp; Person-centered Options Counseling</li> <li>• Family Caregiver Supports</li> <li>• Alzheimer's / Dementia Supports</li> <li>• Evidence-based Health Promotion Services</li> <li>• Implementation of MTPD Medicaid Alternative Care &amp; Targeted Supports for Older Adults</li> </ul>	<ul style="list-style-type: none"> <li>• Coordinated 20+ community workshops</li> <li>• Hosted monthly LTSS provider collaboration meetings</li> <li>• Conducted targeted outreach to family caregivers &amp; those impacted by dementia</li> <li>• Added a new evidence-based falls prevention program (Tai Ji Quan)</li> <li>• Screened existing caseloads for possible MTPD eligibility</li> </ul>

# Activities & Accomplishments

Issue Area	Primary Focus	2016-17 Highlights
Service Integration & Systems Coordination	<ul style="list-style-type: none"> <li>• Health Home Care Coordination Services</li> <li>• Collaborative relationships with Managed Care Organizations</li> <li>• Statewide health system transformation efforts</li> <li>• Integration of MTPD Initiatives</li> </ul>	<ul style="list-style-type: none"> <li>• Entered into new Health Home contracts (Molina &amp; Amerigroup)</li> <li>• Actively participated in the Pierce Co. Accountable Community of Health</li> </ul>
Older Native Americans	<ul style="list-style-type: none"> <li>• Collaborative relationships / service coordination with Puyallup Tribe of Indians</li> <li>• Information / resource sharing</li> <li>• Progress toward state-mandated 7.01 Plan</li> </ul>	<ul style="list-style-type: none"> <li>• Participated in the Money Follows the Person Phase II Tribal Summit</li> <li>• Participated in regular coordination activities with the Puyallup Tribe Elder &amp; Vulnerable Adult Services program</li> </ul>
Livable Communities	<ul style="list-style-type: none"> <li>• Leveraging resources to improve access to transportation</li> <li>• Activities to improve food security</li> <li>• Addressing affordable housing accessibility needs</li> <li>• Integration of MTPD Supportive Housing initiative</li> </ul>	<ul style="list-style-type: none"> <li>• Increased use of volunteer transportation services (31%)</li> <li>• Increased number of volunteer drivers (46%)</li> <li>• Co-facilitated two nutrition provider conferences</li> <li>• Promoted senior nutrition &amp; wellness resources at over 18 community events</li> <li>• Case Managers continue to connect clients to PCHS housing programs</li> </ul>

# 2018 Proposed Budget

The background features abstract, overlapping geometric shapes in various shades of green, ranging from light lime to dark forest green. These shapes are primarily located on the right side of the page, creating a modern, layered effect. The text '2018 Proposed Budget' is positioned on the left side of the page in a bold, green, sans-serif font.

# 2018 Fiscal Considerations

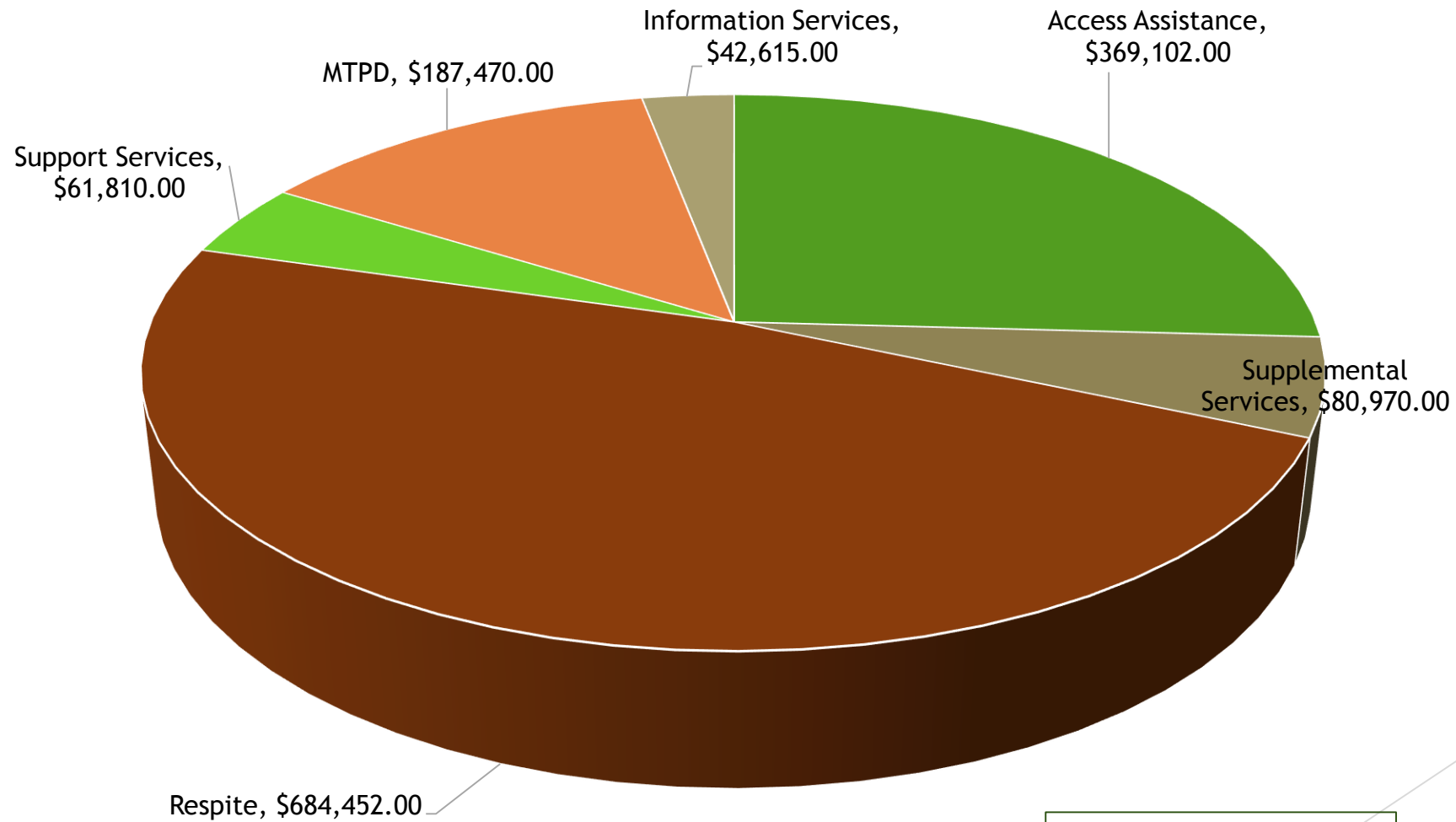
- ▶ **Federal Sequestration** – continued threat of cuts to non-defense, discretionary programs - including Older Americans' Act - in Federal Fiscal Year 2018, unless a budget compromise is reached
- ▶ **Medicaid Transformation Project Demonstration** – new Federal funds received to implement new programs and services designed to delay or reduce the need for Medicaid LTSS, including additional supports for eligible family caregivers and other targeted persons
- ▶ **Medicaid Caseload Growth** – projected increase in Medicaid funds to address anticipated growth in the Medicaid LTSS client caseload; future Medicaid revenue at risk under proposed per capita caps
- ▶ **Health Home Care Coordination** – projected increase due to caseload growth, addition of new managed care contracts, and additional funds allocated in the 2017-2019 State budget
- ▶ **State Revenue Increases** – received two-percent increase in State funds for AAA Case Management, Family Caregiver Support and Senior Citizens Services Act in State Fiscal Years 2018 and 2019, and new funds for home delivered meals

# 2018 Projected Revenues

<b>TOTAL PROJECTED Revenues</b>	<b>2017 Total Revenue (includes carry-over &amp; transfers)</b>	<b>2018 Projected Revenue</b>	<b>Net Change</b>
Subtotal - DISCRETIONARY	\$2,673,044	\$2,661,749	(\$11,295)
Subtotal – <i>NON-</i> DISCRETIONARY	\$13,216,651	\$14,001,016	\$784,365
<b>GRAND TOTAL</b>	<b>\$15,889,695</b>	<b>\$16,662,765</b>	<b>\$773,070</b>

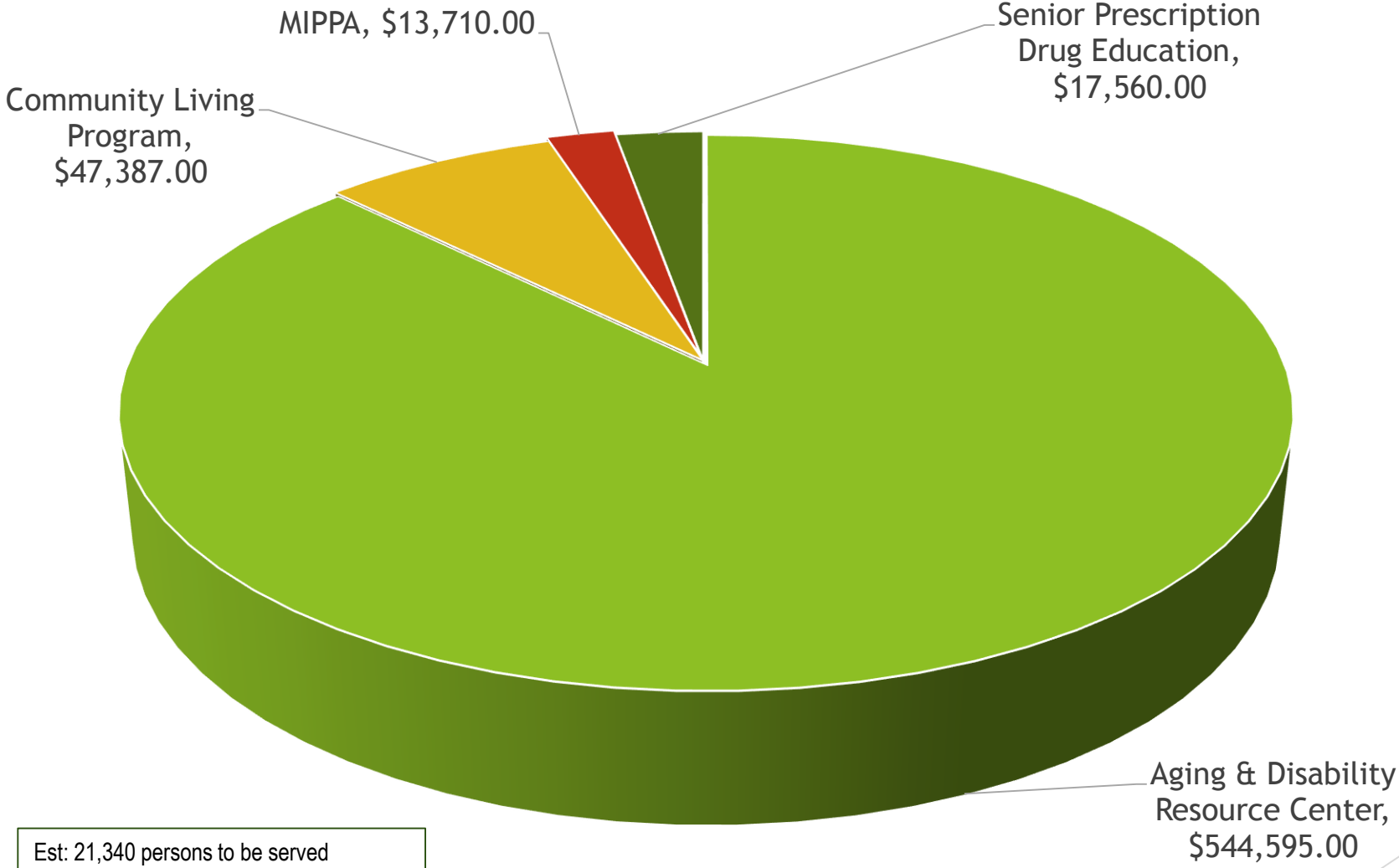


# 2018 Family Caregiver Support



Est: 5,925 persons to be served

# 2018 Aging & Disability Resource Center



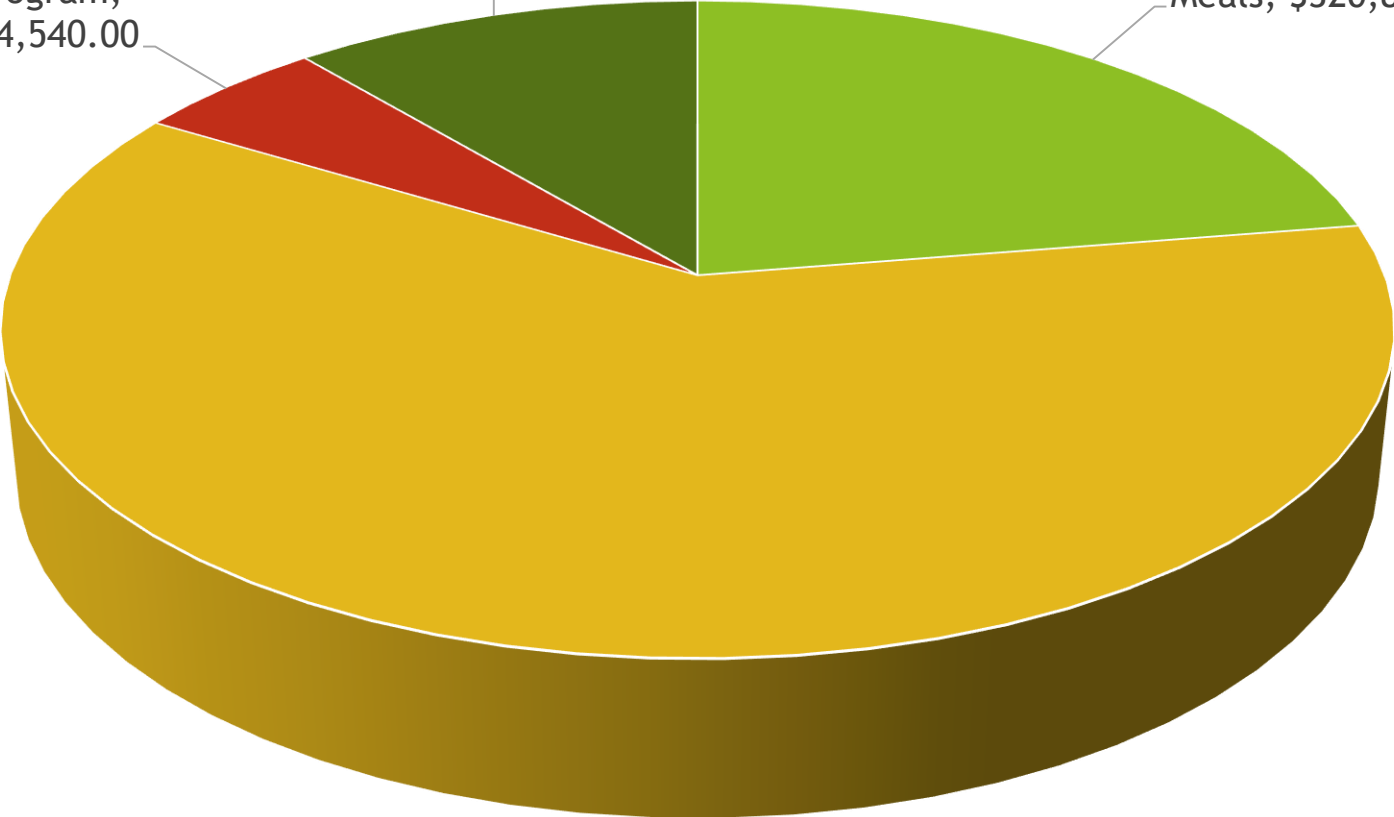
Est: 21,340 persons to be served

# 2018 Senior Nutrition Programs

Senior Farmers  
Market Nutrition  
Program,  
\$74,540.00

Nutrition Services  
Incentive Program,  
\$158,966.00

Home Delivered  
Meals, \$320,827.00



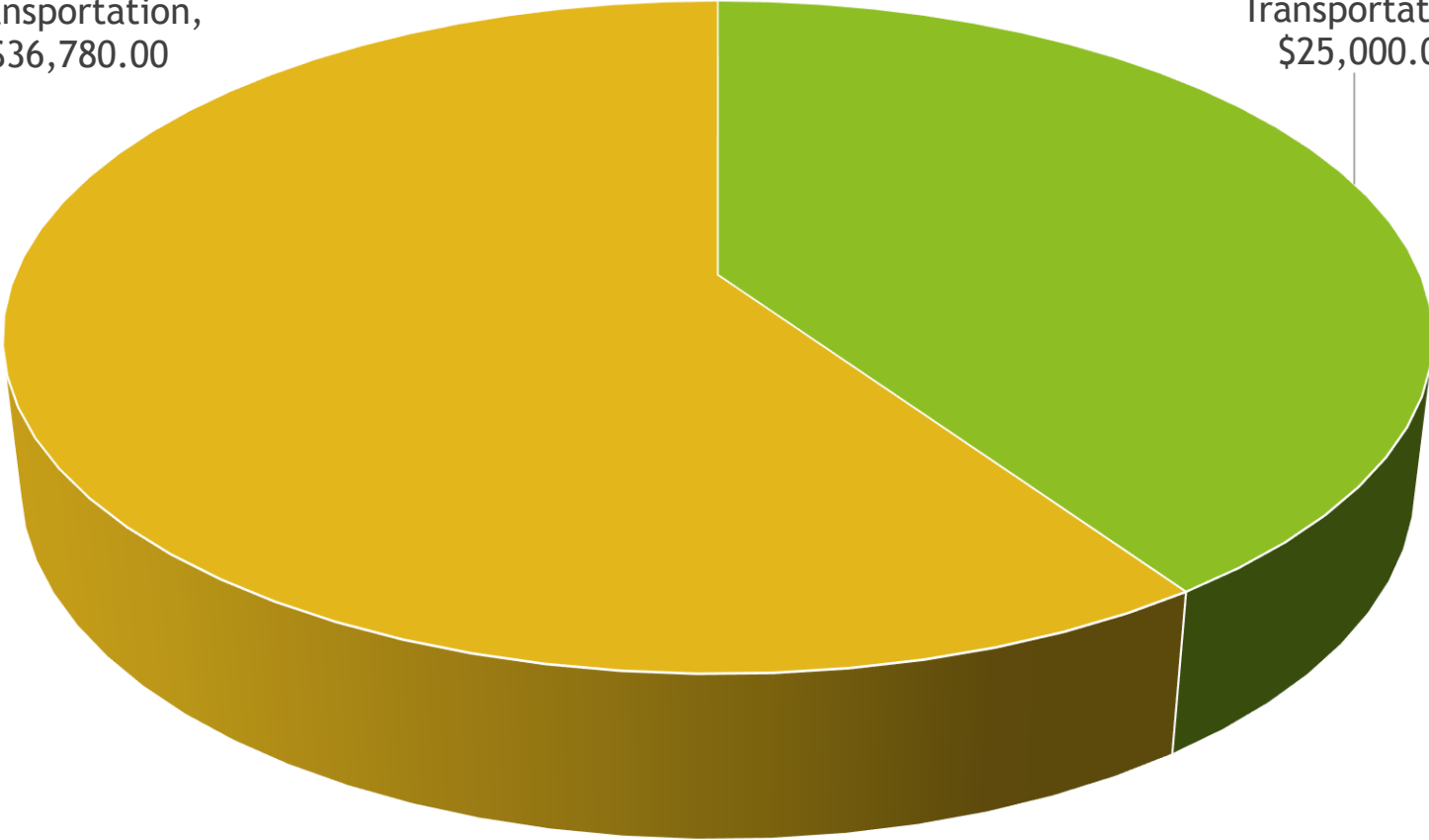
Senior Mealsites,  
\$874,407.00

Est: 6,780 persons to be served

# 2018 Transportation Programs

Volunteer  
Transportation,  
\$36,780.00

Mealsite  
Transportation,  
\$25,000.00

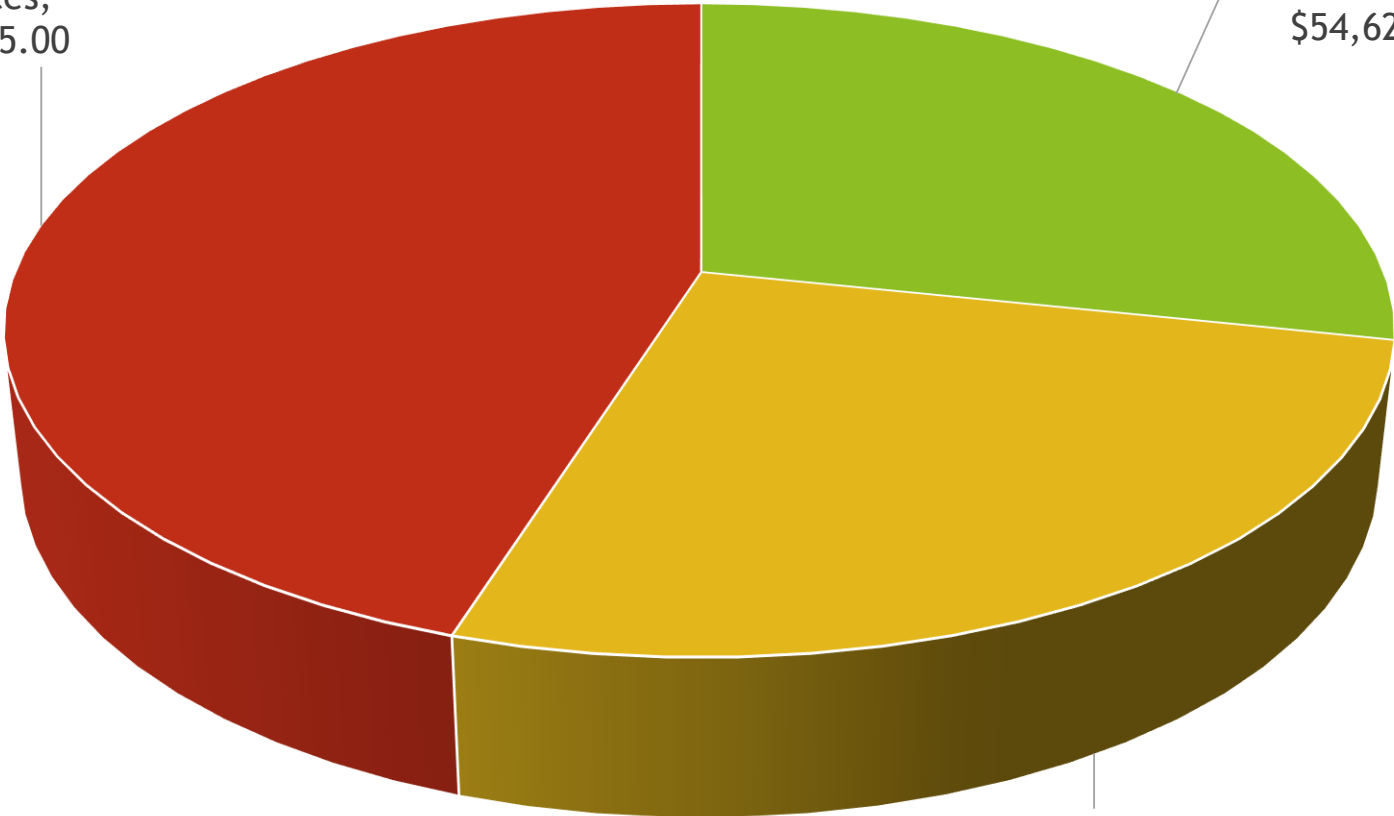


Est: 200 persons to be served

# 2018 Health Promotion/Disease Prevention

Older Adult  
Counseling  
Services,  
\$87,035.00

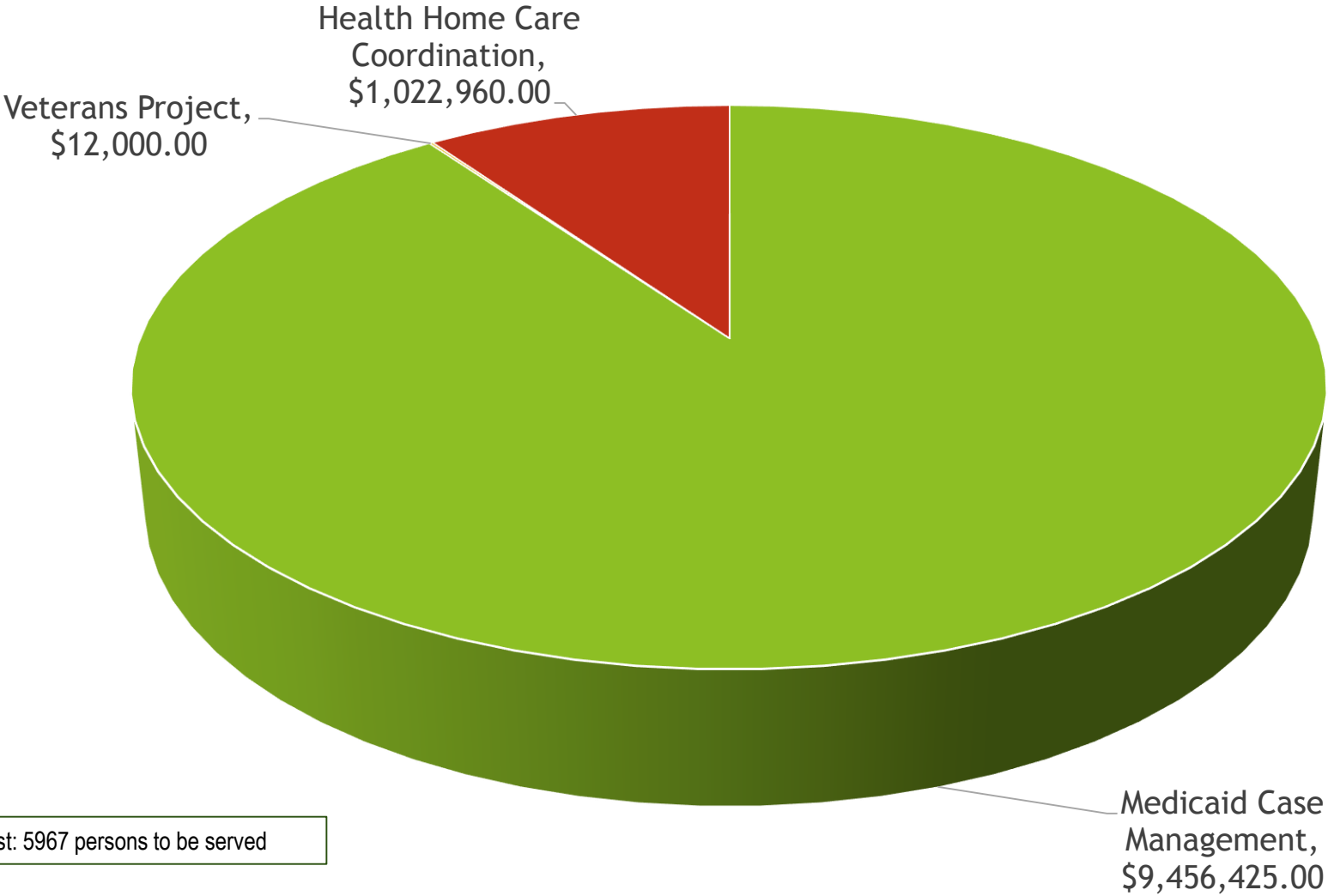
Senior Foot Care,  
\$54,620.00



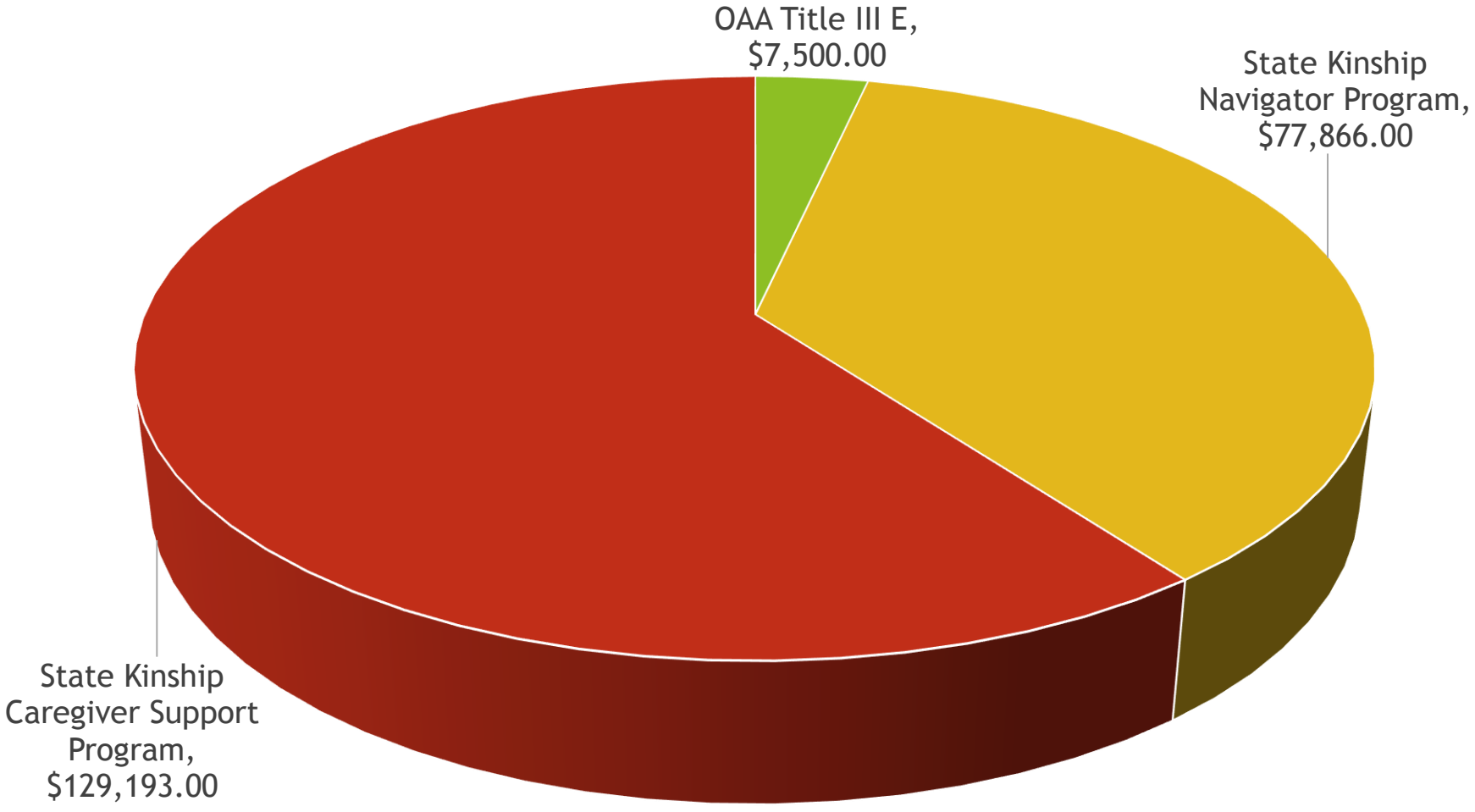
Est: 650 persons to be served

Falls Prevention  
(SAIL/TJQMBB),  
\$51,211.00

# 2018 Case Management & Nursing Services

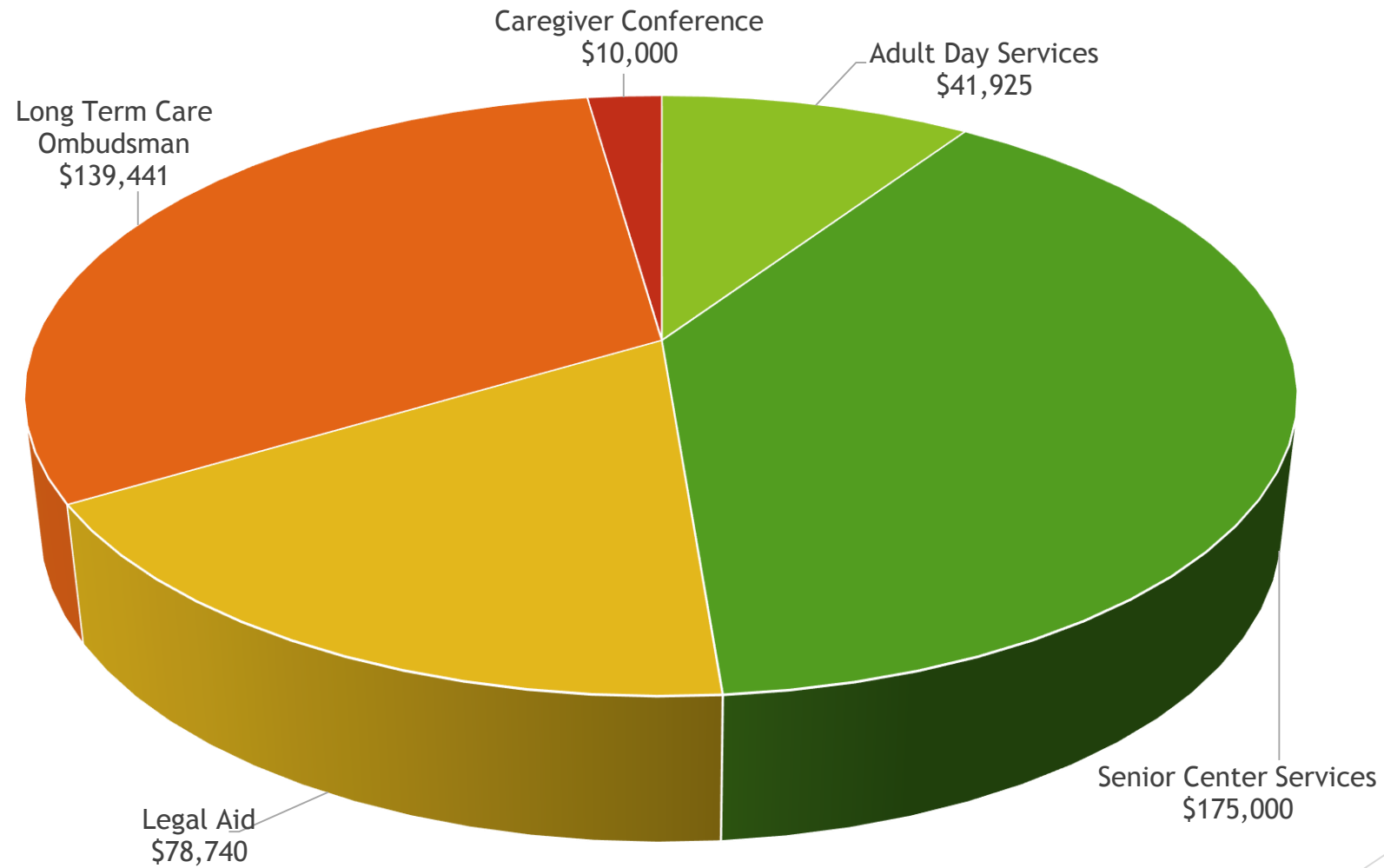


# 2018 Kinship Caregiver Support Program



Est: 530 persons to be served

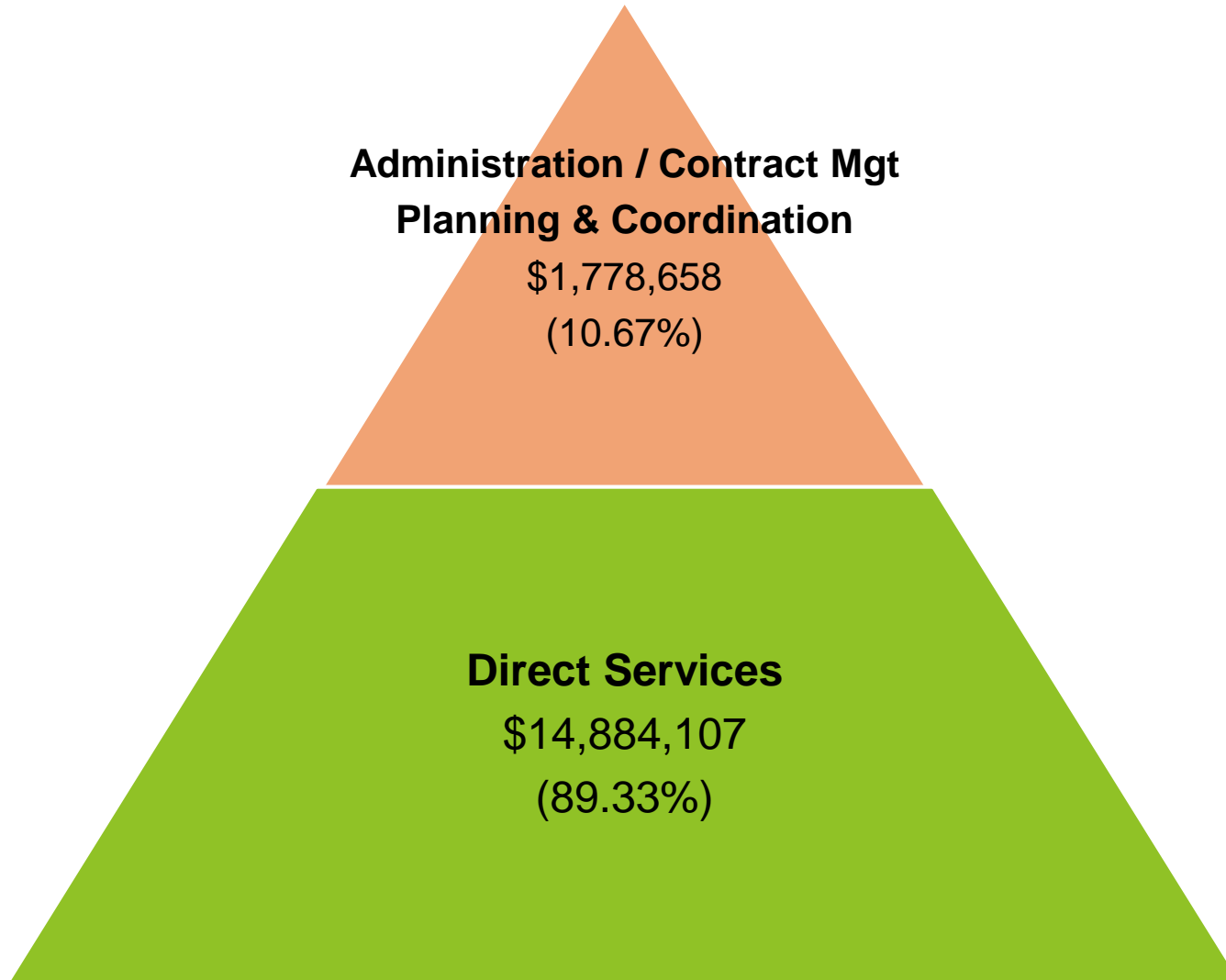
# 2018 Other Services



Est: 6,400 persons to be served



# 2018 Total Proposed Budget



# Public Comment

## Questions to Consider:

- ▶ Does the updated plan continue to address the most critical issues impacting Pierce County?
- ▶ Has ADR made the right decisions regarding funding of programs / services?
- ▶ Should ADR consider any other collaborative partnerships to help us meet Area Plan goals?
- ▶ Do you have any other recommendations?

# Thank you!



**Comments due by September 19, 2017**

Connie Kline, Social Services Supervisor  
1305 Tacoma Avenue South, Suite 104,  
Tacoma, WA 98402

ckline@co.pierce.wa.us  
Fax - (253) 798-2839