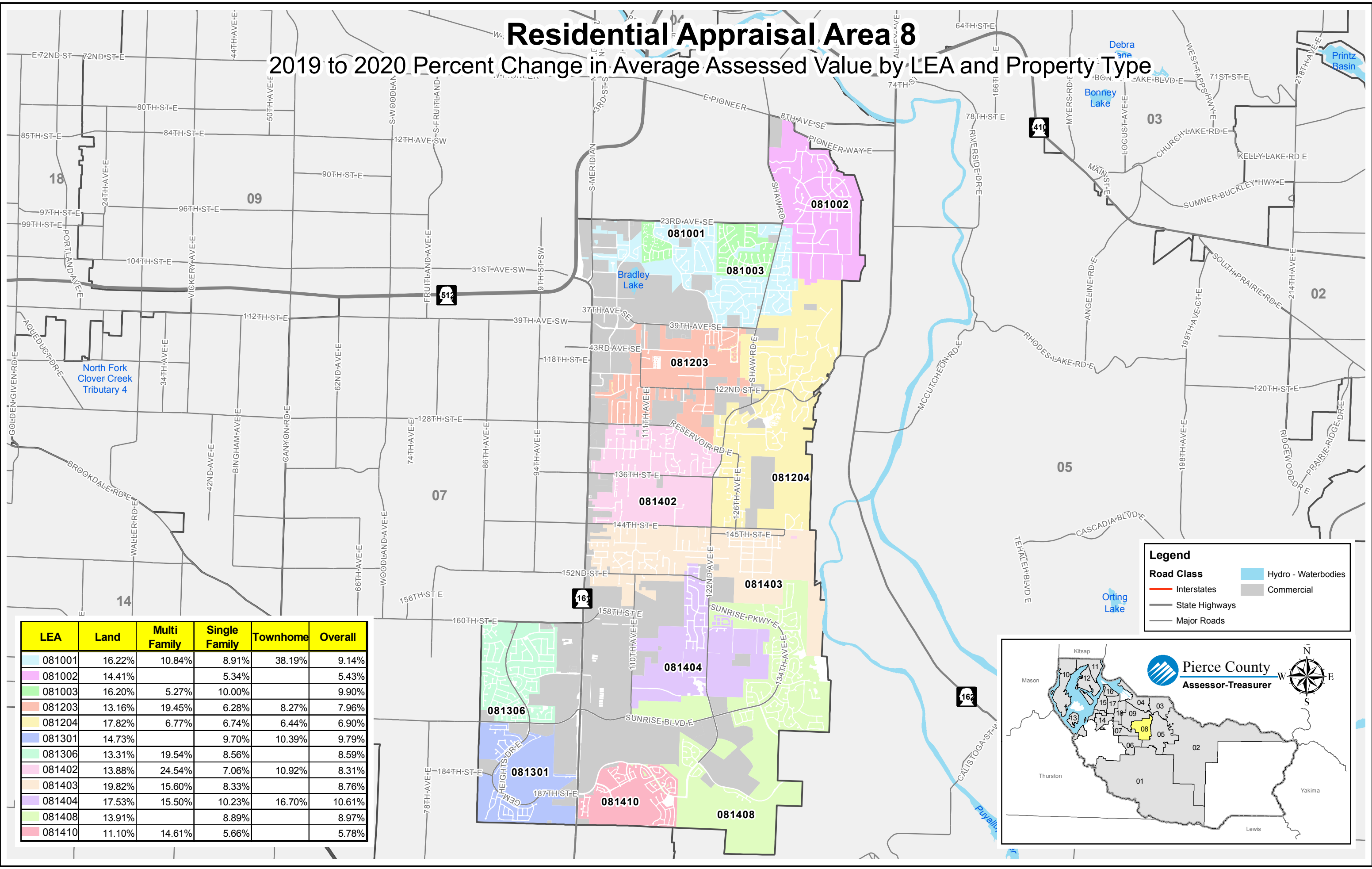


# Residential Appraisal Area 8

## 2019 to 2020 Percent Change in Average Assessed Value by LEA and Property Type



LEA	Land	Multi Family	Single Family	Townhome	Overall
081001	16.22%	10.84%	8.91%	38.19%	9.14%
081002	14.41%		5.34%		5.43%
081003	16.20%	5.27%	10.00%		9.90%
081203	13.16%	19.45%	6.28%	8.27%	7.96%
081204	17.82%	6.77%	6.74%	6.44%	6.90%
081301	14.73%		9.70%	10.39%	9.79%
081306	13.31%	19.54%	8.56%		8.59%
081402	13.88%	24.54%	7.06%	10.92%	8.31%
081403	19.82%	15.60%	8.33%		8.76%
081404	17.53%	15.50%	10.23%	16.70%	10.61%
081408	13.91%		8.89%		8.97%
081410	11.10%	14.61%	5.66%		5.78%

**Legend**

**Road Class**

- Interstates
- State Highways
- Major Roads
- Hydro - Waterbodies
- Commercial

**Pierce County**  
Assessor-Treasurer